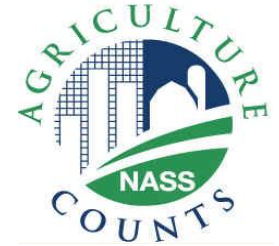




United States Department of Agriculture
National Agricultural Statistics Service



HOGS & PIGS INVENTORY

Executive Briefing

March 1, 2013

March Hogs and Pigs

Data Collection Period:

February 28 – March 18

Sample Size:

7,500

Collection Methods

Phone, mail, internet, personal interview

Main Data Items

Total Inventory, by class, weight group, and quarter
Sows Farrowing, pig crop, and pigs per litter

U.S. Hogs & Pigs Revisions

Initial Estimate Previous Revision Current Revision Net Revision Current Estimate

Sep 2012	All Hogs and Pigs	67.5 million	+230,000 +0.3%	+470,000 +0.7%	+700,000 +1.0%	68.2 million
	Pig Crop	29.3 million		+368,000 +1.3%	+368,000 +1.3%	29.7 million
Dec 2012	All Hogs and Pigs	66.3 million		+65,000 +0.1%		66.4 million



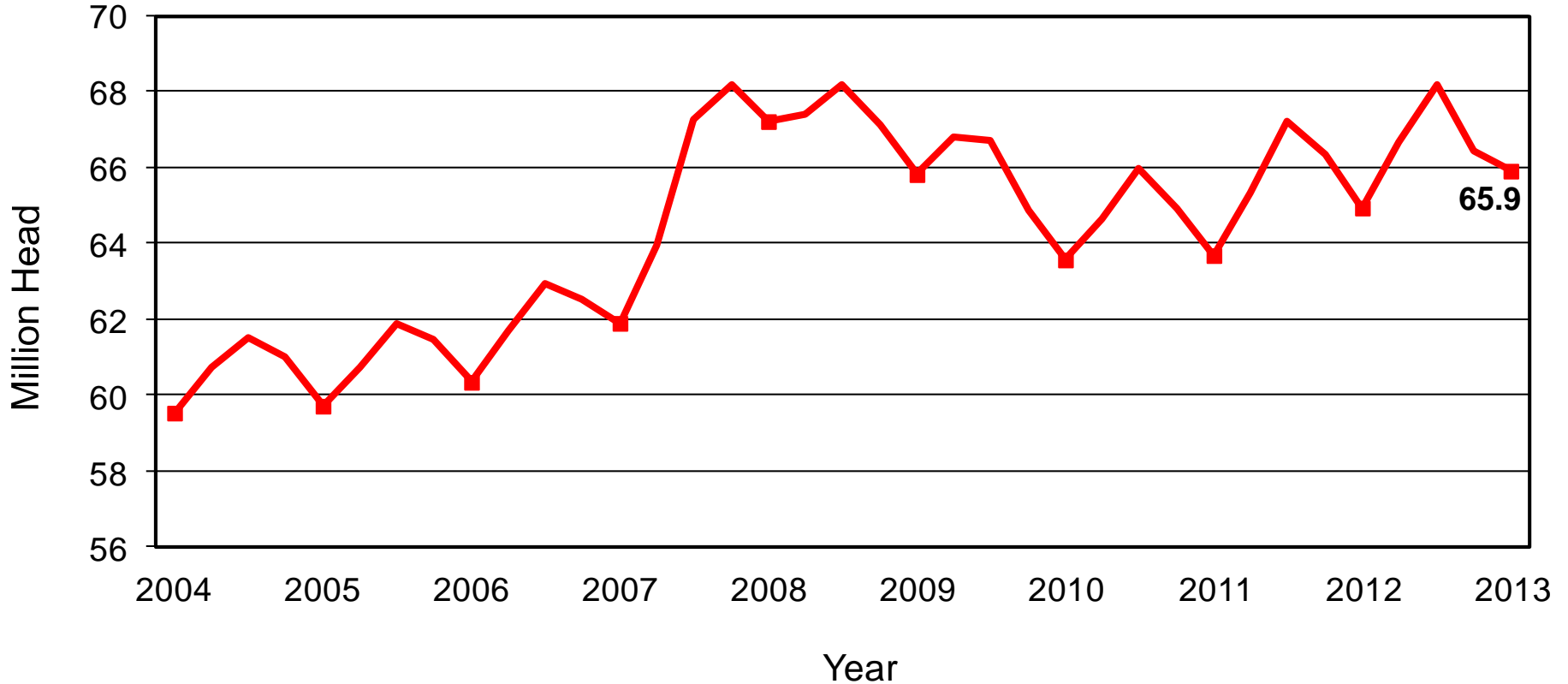
U.S. Hogs & Pigs Inventory

March 1, 2013

Inventory Items	(000) Hd	% PY
All Hogs & Pigs	65,911	101%
Breeding Hogs	5,834	100%
Market Hogs	60,077	102%
Dec – Feb Pig Crop	29,019	102%
Sows Farrowing	2,879	101%
Litter Rate	Number	% PY
Dec 2012 – Feb 2013	10.08	101%
Farrowing Intentions	(000) Hd	% PY
Mar – May 2013	2,955	99%
Jun – Aug 2013	2,905	99%

U.S. Quarterly Hogs and Pigs Inventory

March 1, 2013

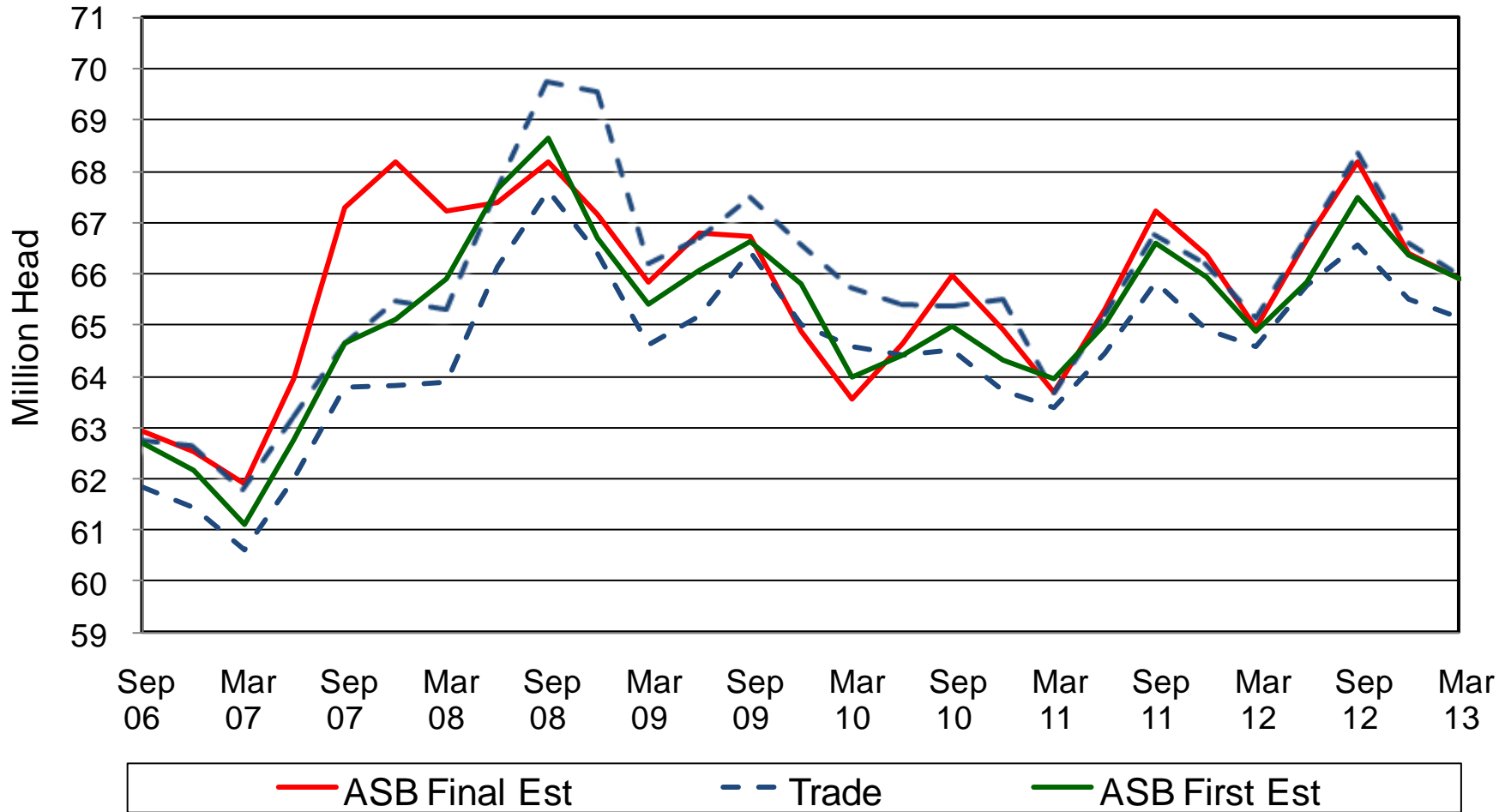


NASS Estimates Compared to Trade Expectations

Percent of Previous Year

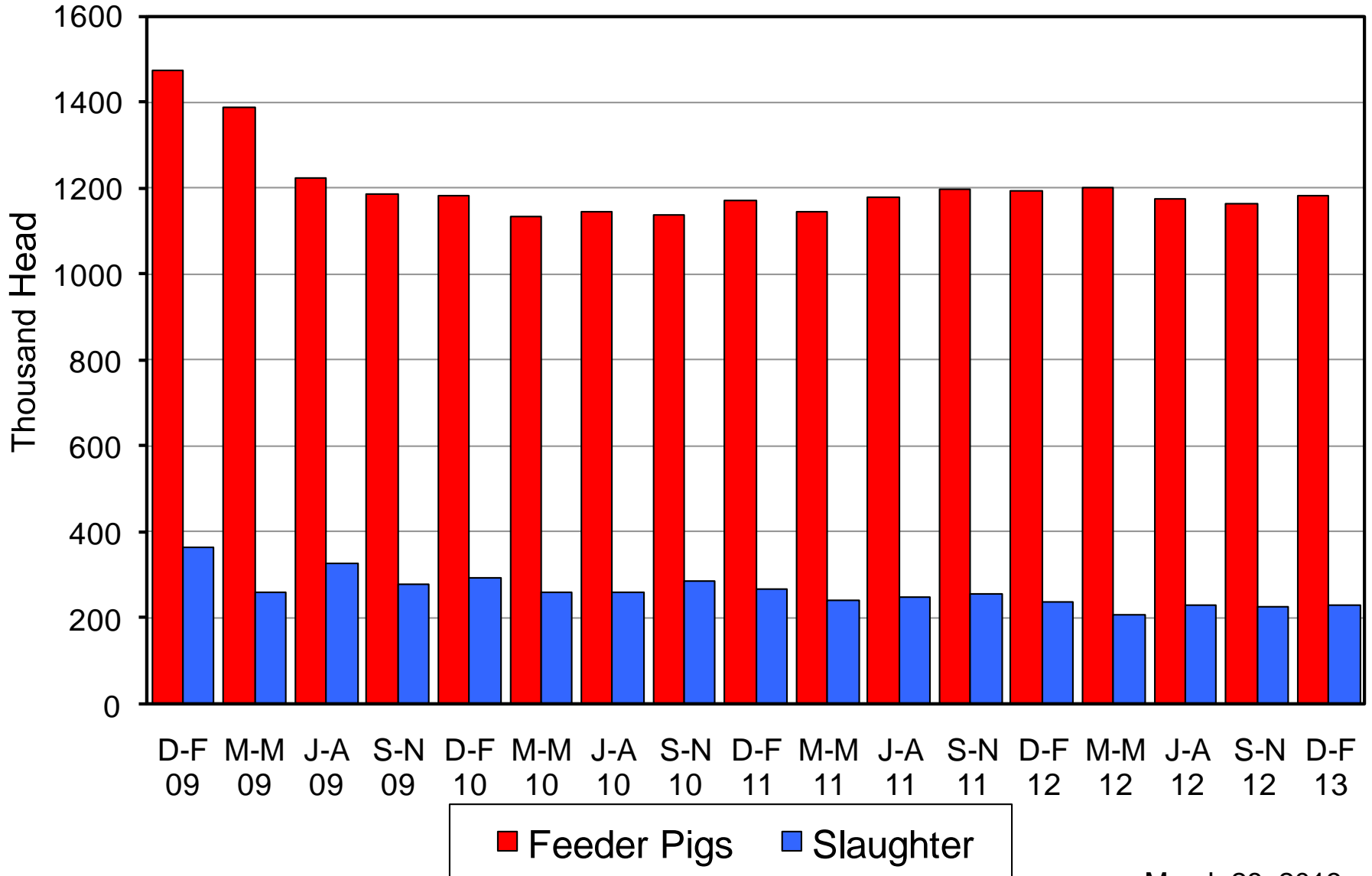
Inventory Items	NASS Estimate	Trade Average	Trade Range
All Hogs & Pigs	101.4%	100.7%	100.3% – 101.6%
Breeding Hogs	100.2%	100.3%	99.7% – 101.2%
Market Hogs	101.6%	100.8%	100.3% – 101.7%
Dec – Feb Pig Crop	101.6%	101.2%	100.6% – 101.7%
Farrowing Intentions			
Mar – May 2013	99.1%	98.7%	97.9% – 99.8%
Jun – Aug 2013	99.2%	100.9%	98.9% – 101.6%

All Hogs and Pigs Board vs Trade Expectations

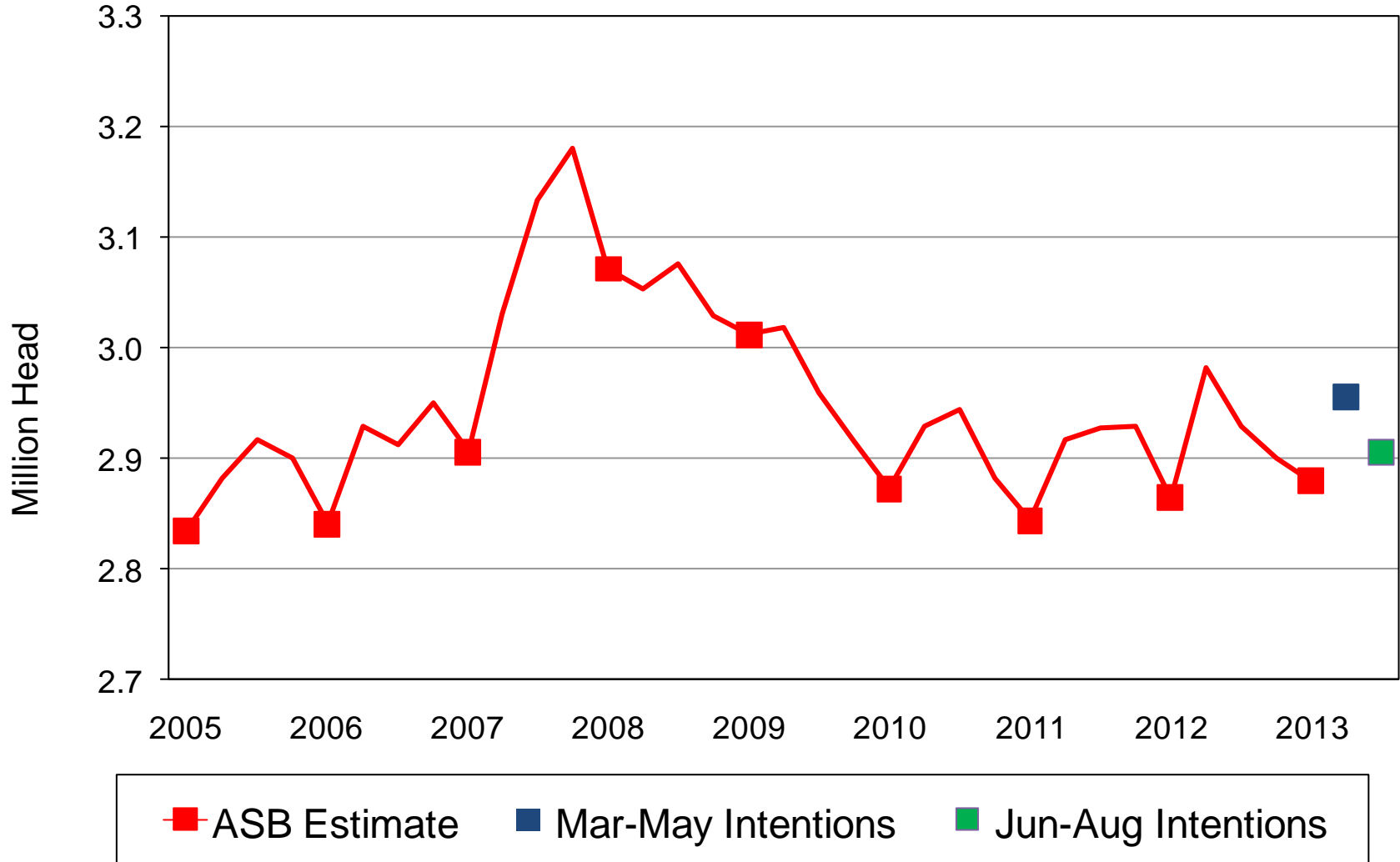


Canadian Imports by Quarter

Feeder Pigs and Slaughter Hogs



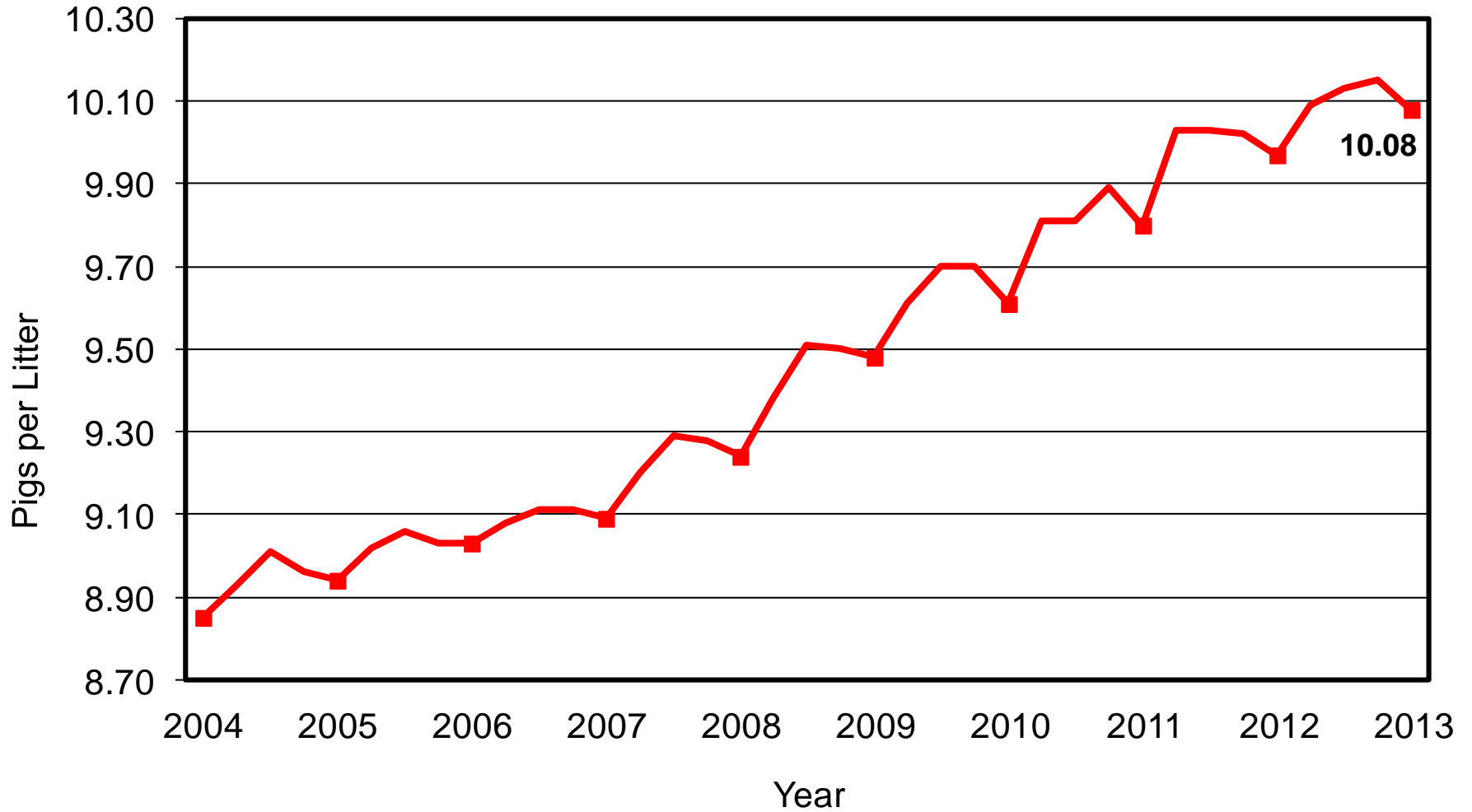
U.S. Quarterly Sows Farrowed December - February



Breeding Herd Inventory Disposition & Utilization

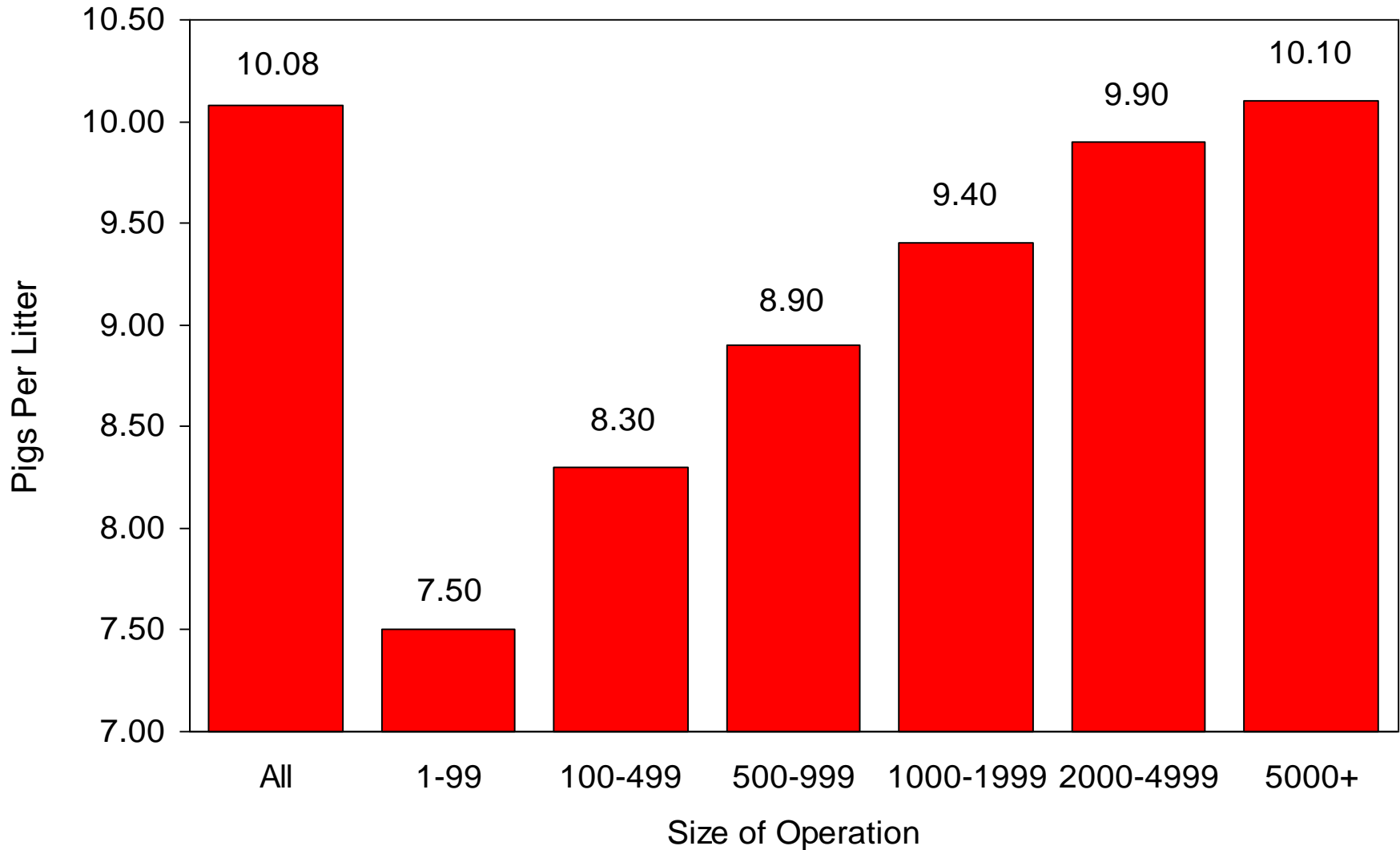
Year	Dec. 1 Estimate	Slaughter	Additions	Mar. 1 Estimate	Sow Utilization
	(000) Hd	(000) Hd	(000) Hd	(000) Hd	Percent
2004	6,019	858	810	5,971	47%
2005	5,980	840	812	5,952	47%
2006	6,031	830	844	6,045	47%
2007	6,116	937	970	6,149	48%
2008	6,233	833	800	6,200	49%
2009	6,062	811	741	5,992	50%
2010	5,850	803	713	5,760	49%
2011	5,778	826	836	5,788	49%
2012	5,803	836	853	5,820	49%
2013	5,817	805	822	5,834	50%

U.S. Quarterly Pigs per Litter December - February

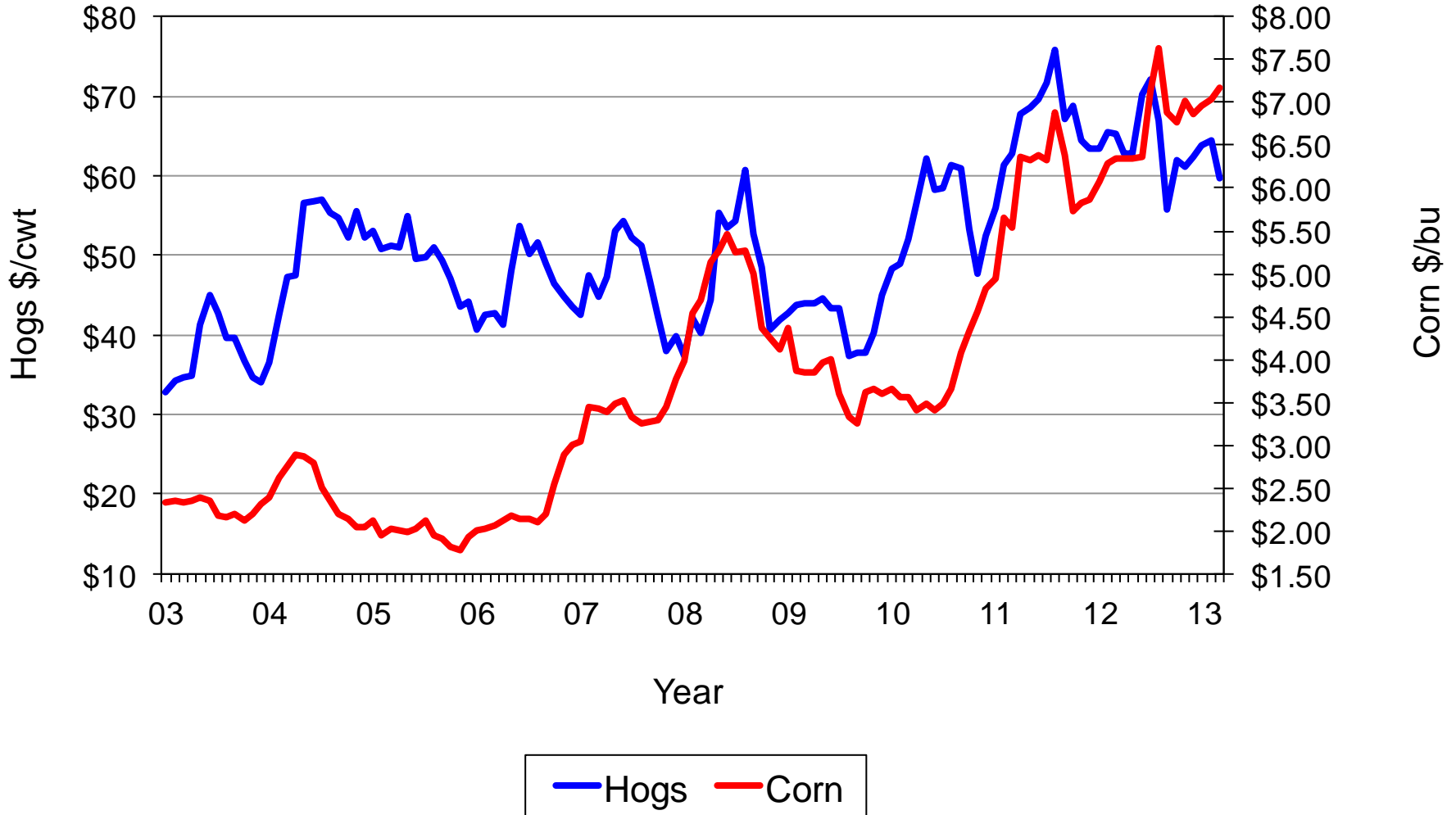


U.S. Pigs per Litter by Size of Operation

December 2012 – February 2013

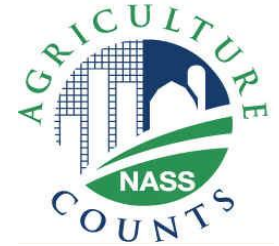


U.S. Prices Received by Farmers for Hogs & Corn





United States Department of Agriculture
National Agricultural Statistics Service



Upcoming Reports

April 10

Crop Production

April 19

Cattle on Feed

April 25

Meat Animals - PDI



United States Department of Agriculture
National Agricultural Statistics Service



All Reports Available At
www.nass.usda.gov

For Questions Call or Email

202-720-3570

800-727-9540

nass@nass.usda.gov