



United States Department of Agriculture  
**National Agricultural Statistics Service**

---

---

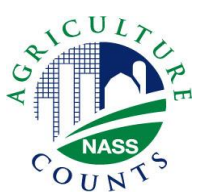


# **ACREAGE GRAIN STOCKS**

## Executive Summary

JUNE 28, 2013

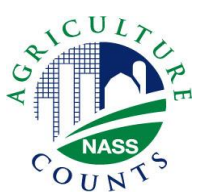
12:00 PM



# Contents



<b>Field Crops</b>	<b>Stocks</b>
Planted Acres	Corn
Harvested Acres	Soybeans
	Wheat



# Survey Overview

	June Ag Survey	June Area Survey
Survey Type	Farmer Reported	Farmer Reported
Collection Method	Mail, Phone, Internet, Personal Interview	Personal Interview
Crops Included	Field Crops	Field Crops
States	All except HI	All except AK and HI
Sample Size	~71,000 farms	~9,900 segments
Collection Period	May 30 – June 16	May 30 – June 16



# U.S. Principal Crop Acres

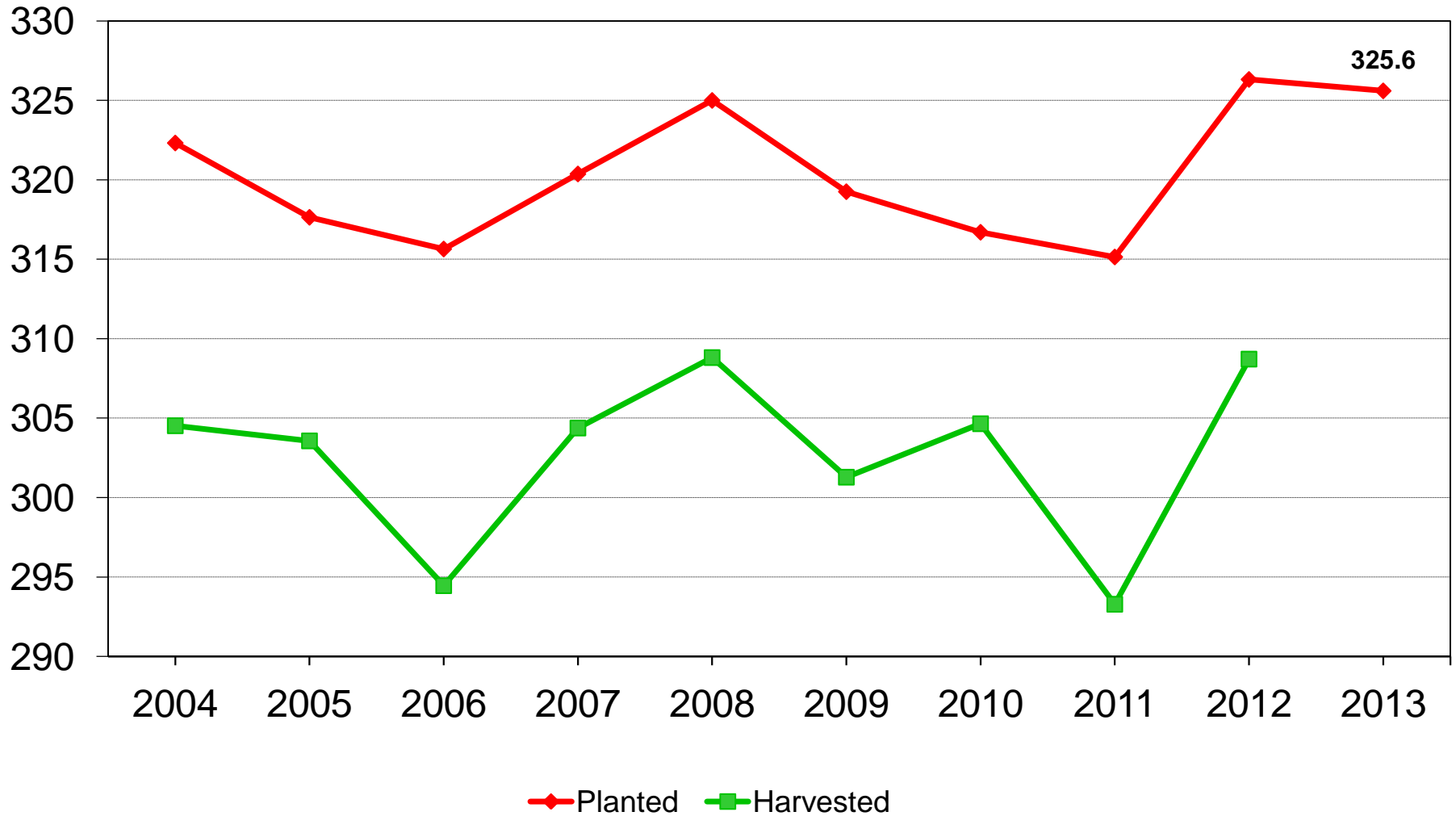
Year	Planted Area	Change from Previous Year
<i>---Million acres---</i>		
2004	322.3	- 3.4
2005	317.6	- 4.7
2006	315.6	- 2.0
2007	320.4	+ 4.7
2008	325.0	+ 4.6
2009	319.3	- 5.7
2010	316.7	- 2.6
2011	315.1	- 1.6
2012	326.3	+ 11.2
2013	325.6	- 0.7



# U.S. Principal Crop Acres



Million acres



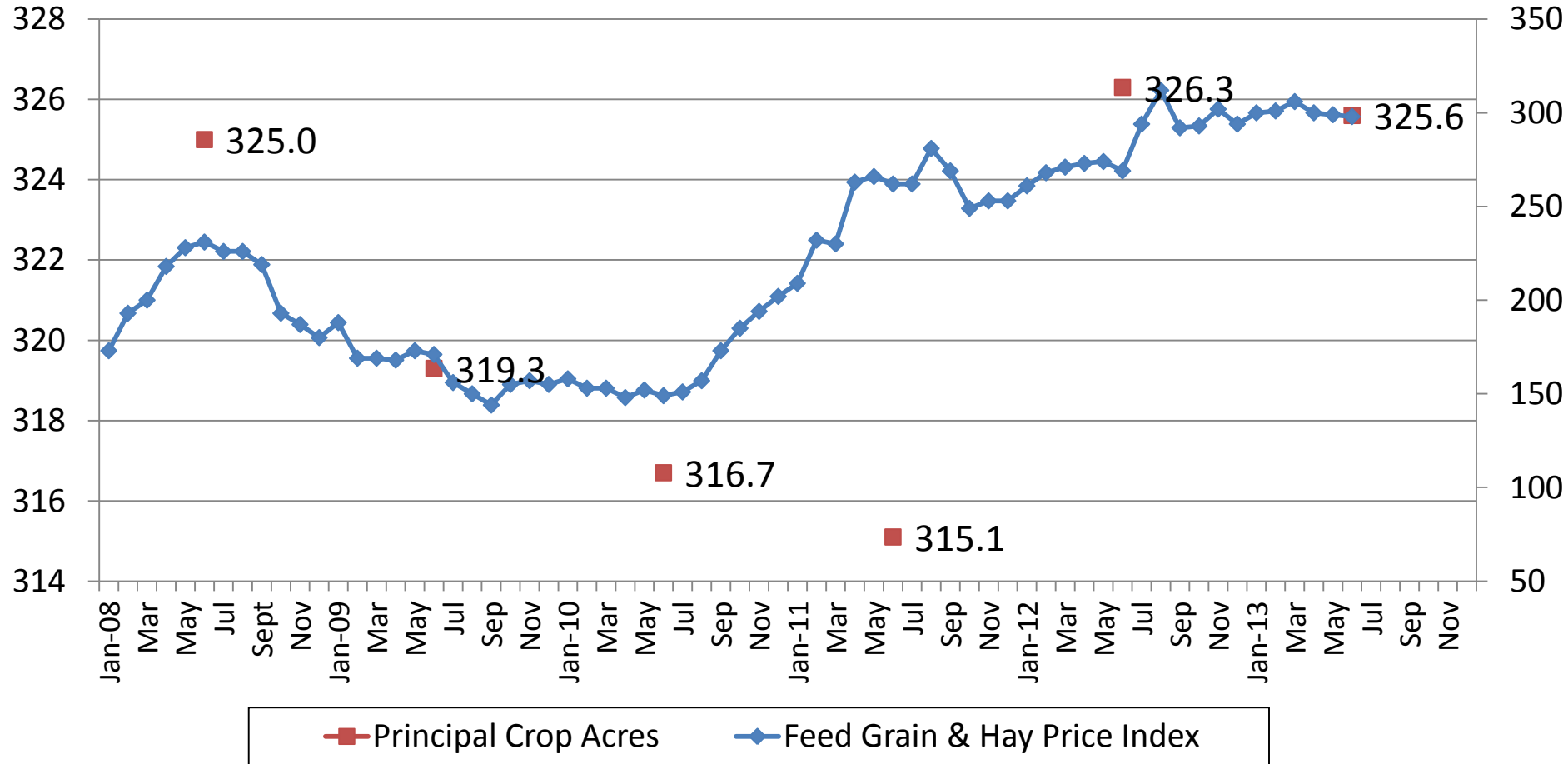


# Feed Grain & Hay Price Index and Principal Crop Acres (2008-2013)



Percent  
(1990-92=100)

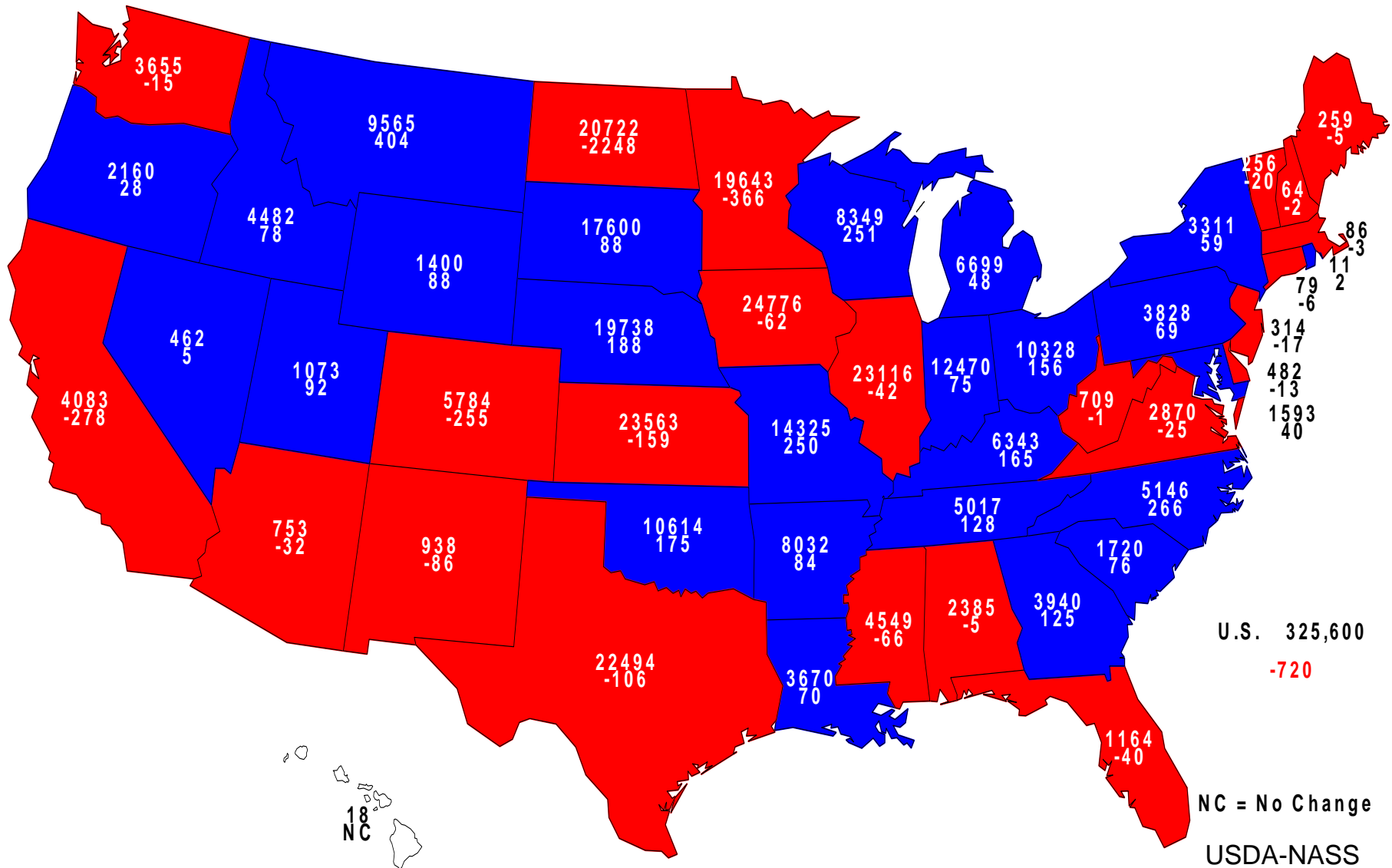
Million Acres





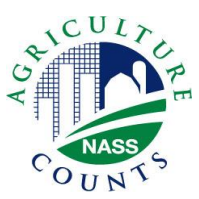
# 2013 Principal Crops Planted

## Acres (000) and Change From Previous Year



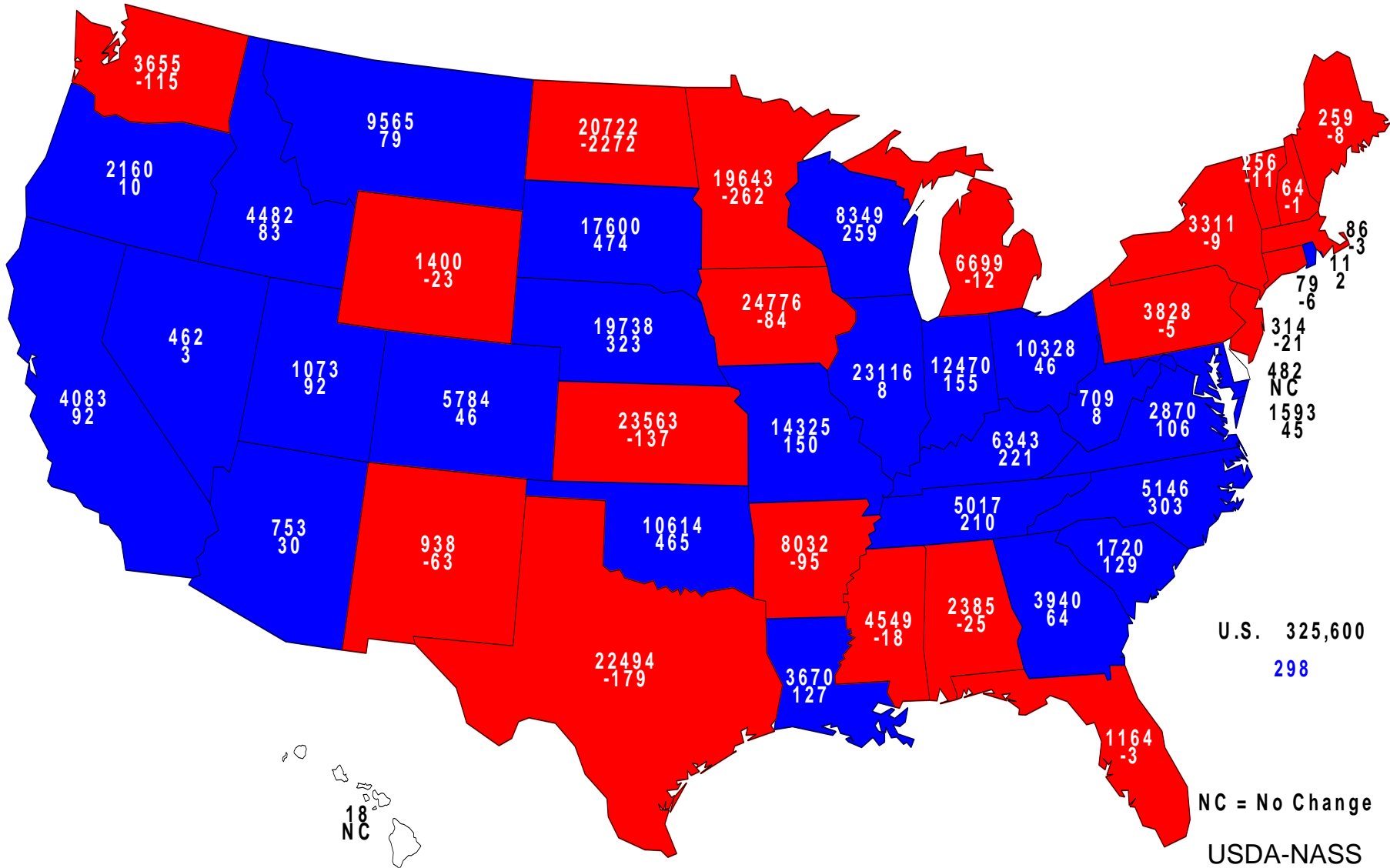
U.S. 325,600  
-720

NC = No Change  
USDA-NASS  
6-28-13



# 2013 Principal Crops Planted

## Acres (000) and Change From Prospective Plantings



U.S. 325,600  
298

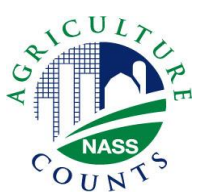
NC = No Change  
USDA-NASS  
6-28-13





# June 2013 Acreage

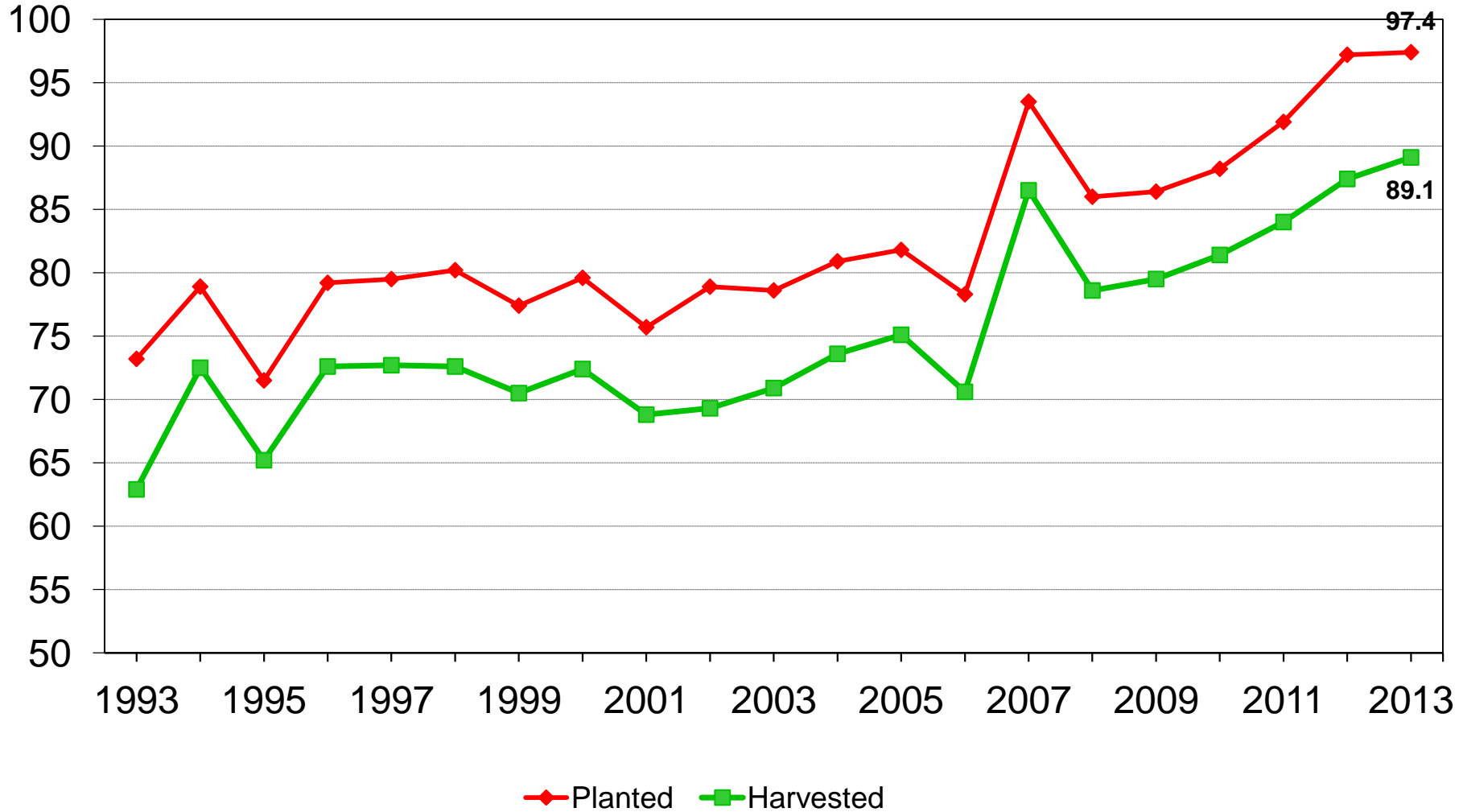
Crop	March 2013	June 2013	Change from March	Change from 2012
	<i>---Million acres---</i>		<i>---Percent---</i>	
<b>Corn</b>				
Planted	97.3	97.4	+ 0.1	+ 0.2
Harvested	---	89.1	---	+ 2.0

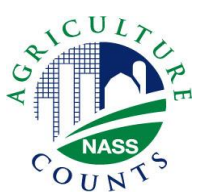


# U.S. Corn Acres



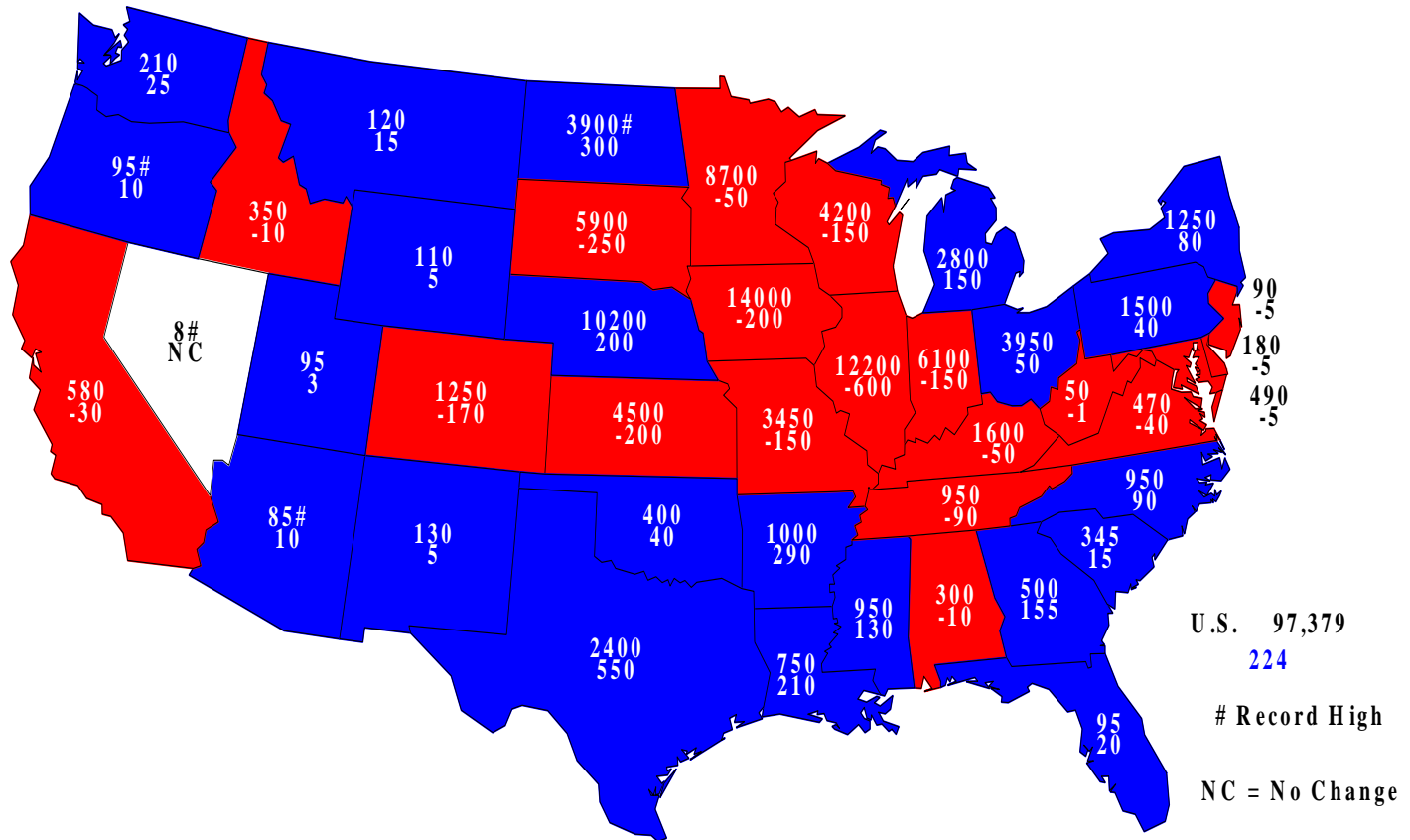
Million acres





# 2013 Corn Planted

## Acres (000) and Change From Previous Year

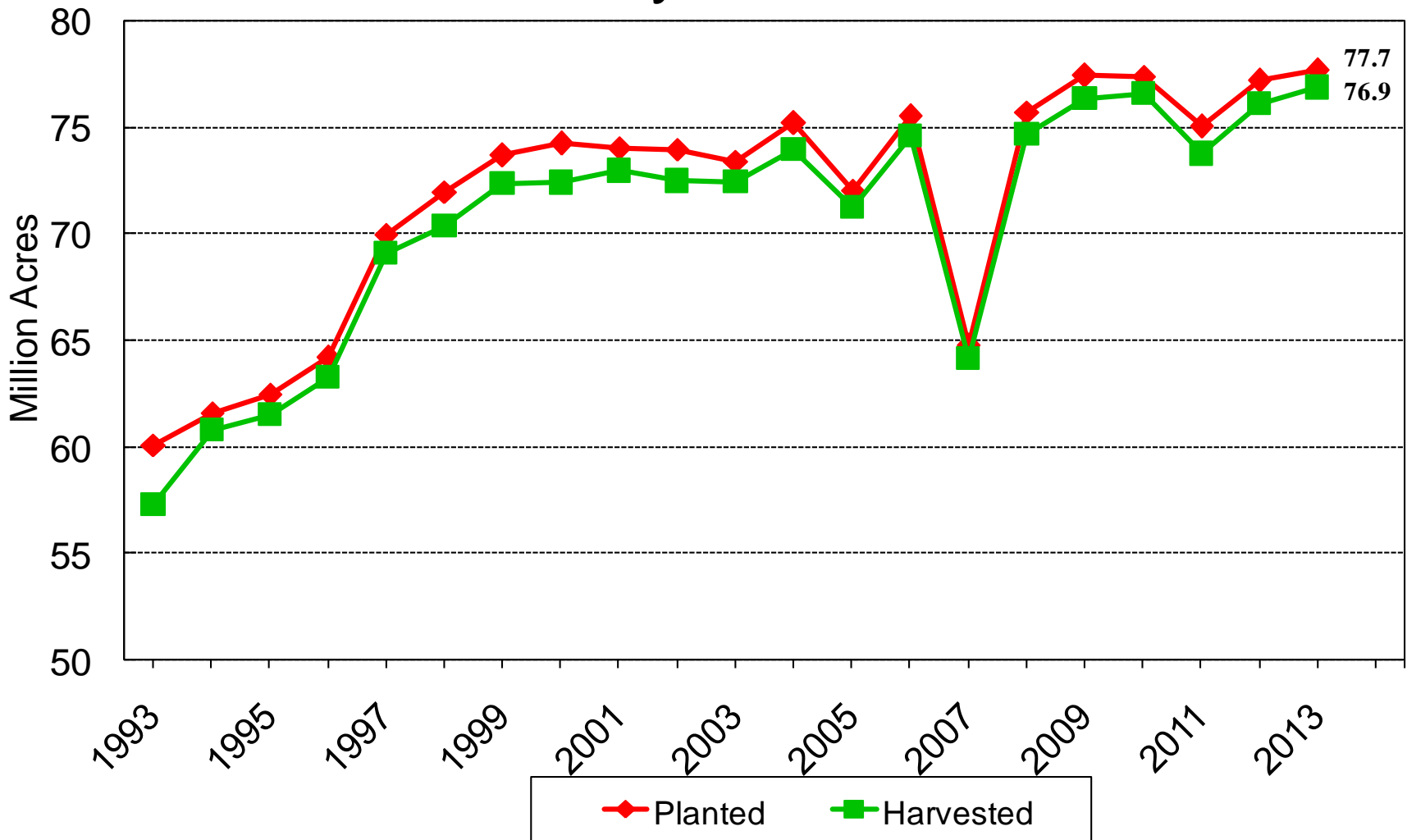




# June 2013 Acreage

<b>Crop</b>	<b>March 2013</b>	<b>June 2013</b>	<b>Change from March</b>	<b>Change from 2012</b>
	<i>---Million acres---</i>		<i>---Percent---</i>	
<b>Soybeans</b>				
<b>Planted</b>	<b>77.1</b>	<b>77.7</b>	<b>+ 0.8</b>	<b>+ 0.7</b>
<b>Harvested</b>	<b>---</b>	<b>76.9</b>	<b>---</b>	<b>+ 1.1</b>

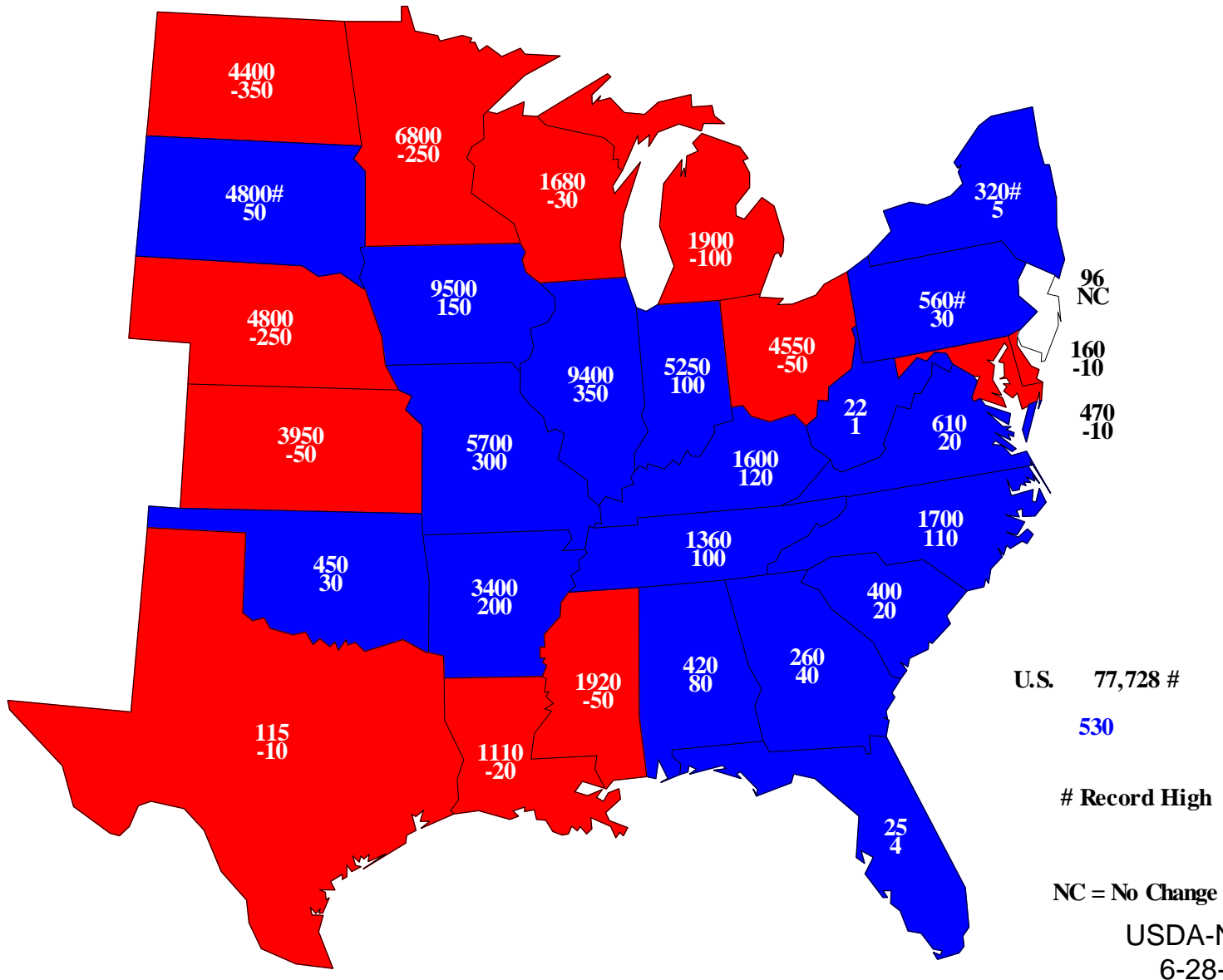
# U.S. Soybean Acres





# 2013 Soybeans Planted

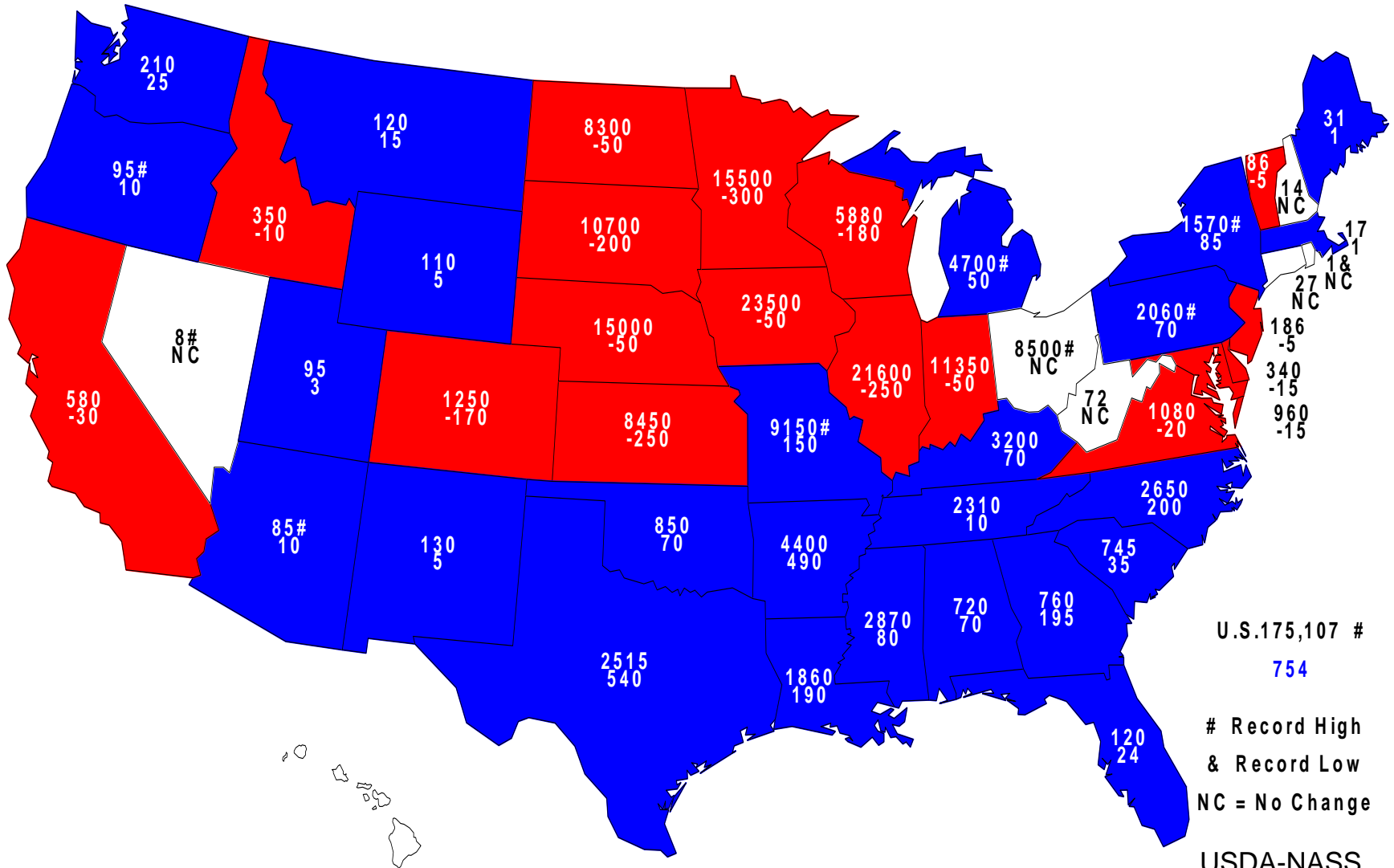
## Acres (000) and Change From Previous Year





# 2013 Combined Corn & Soybeans Planted

## Acres (000) and Change From Previous Year



U.S. 175,107 #  
754

# Record High  
& Record Low  
NC = No Change

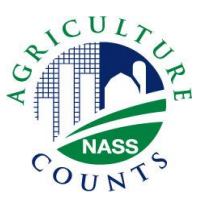
USDA-NASS  
6-28-13



# June 2013 Acreage

Crop	March 2013	June 2013	Change from March	Change from 2012
	<i>---Million acres---</i>		<i>---Percent---</i>	
<b>Upland Cotton</b>				
<b>Planted</b>	<b>9.82</b>	<b>10.0</b>	<b>+ 2.1</b>	<b>- 17.0</b>
<b>American Pima</b>				
<b>Planted</b>	<b>0.206</b>	<b>0.226</b>	<b>+ 9.7</b>	<b>- 5.2</b>
<b>All Cotton</b>				
<b>Planted</b>	<b>10.0</b>	<b>10.3</b>	<b>+ 2.2</b>	<b>- 16.8</b>

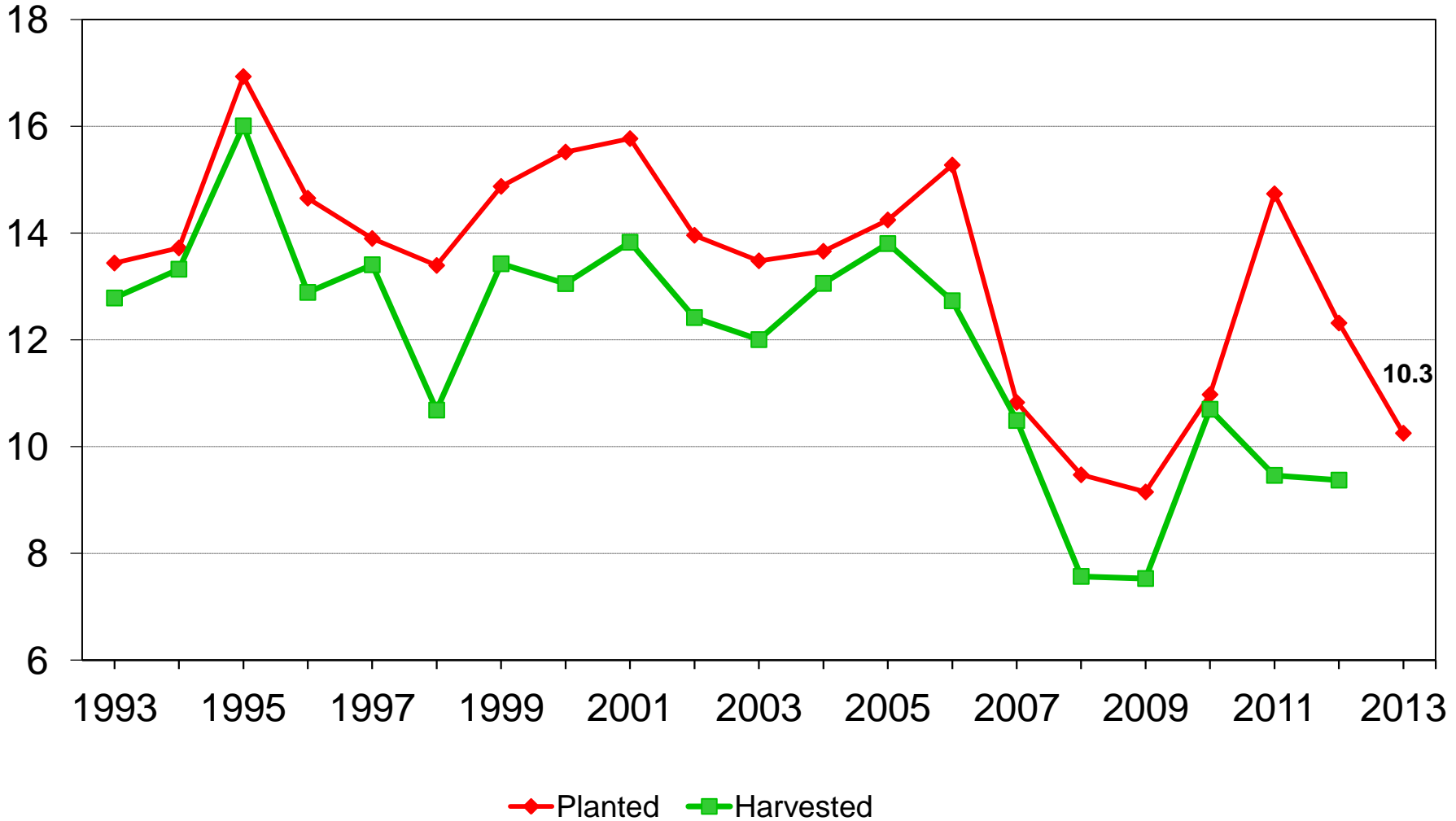




# U.S. All Cotton Acres



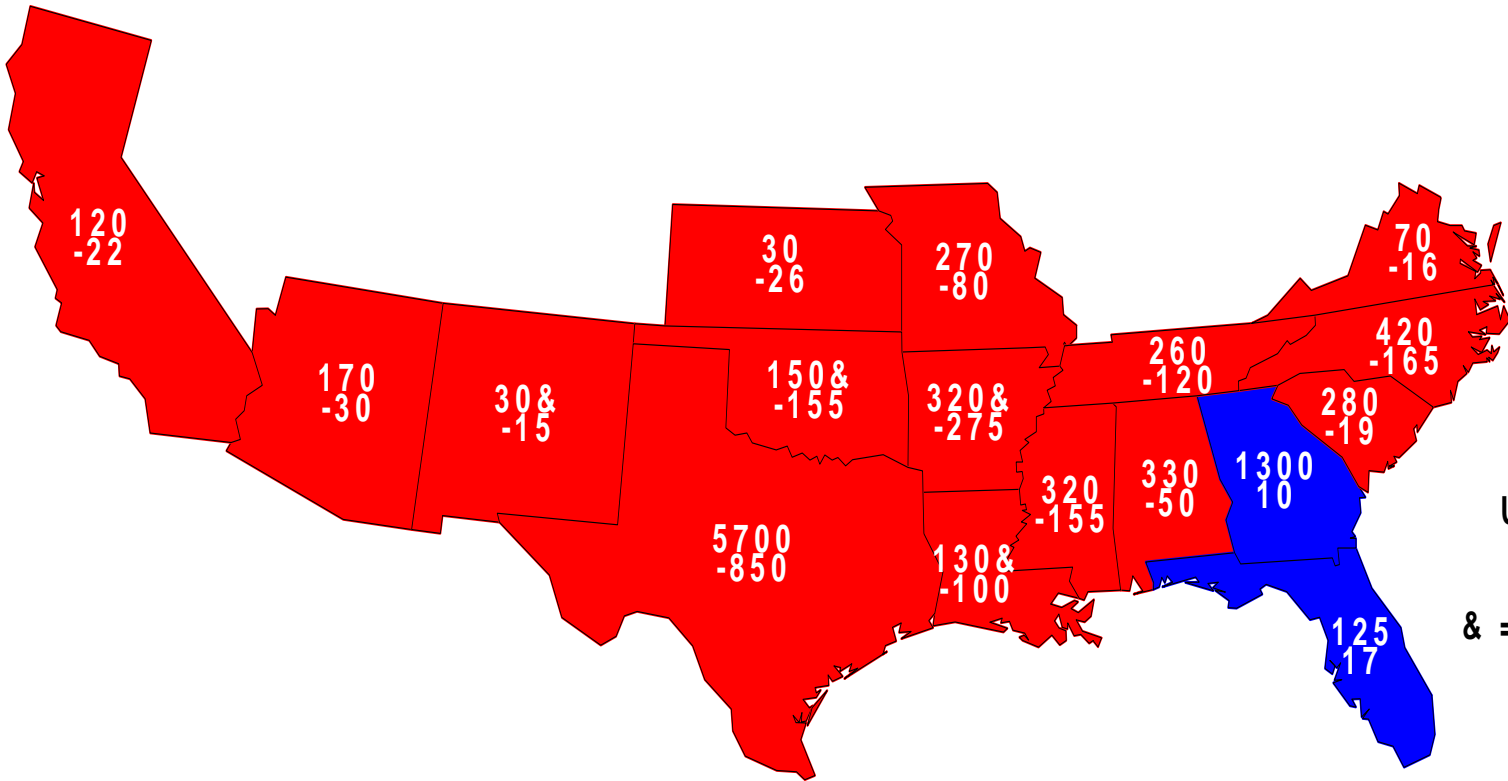
Million acres



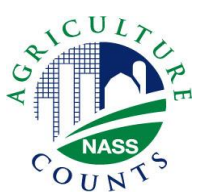


# 2013 Upland Cotton Planted

## Acres (000) and Change From Previous Year



U.S. 10,025  
-2,051  
& = Record Low



# June 2013 Acreage

Crop	March 2013	June 2013	Change from March	Change from 2012
	<i>---Million acres---</i>		<i>---Percent---</i>	
<b>Winter Wheat</b>				
Planted	42.0	42.7	+ 1.7	+ 3.3
Harvested	32.7*	32.3	- 1.3*	- 7.4
<b>Other Spring Wheat</b>				
Planted	12.7	12.3	- 3.2	+<0.1
Harvested	---	12.0	---	- 0.8
<b>Durum Wheat</b>				
Planted	1.75	1.54	- 12.2	- 27.6
Harvested	---	1.50	---	- 28.5
<b>All Wheat</b>				
Planted	56.4	56.5	+ 0.2	+ 1.4
Harvested	---	45.7	---	- 6.7

\* June 12, 2013

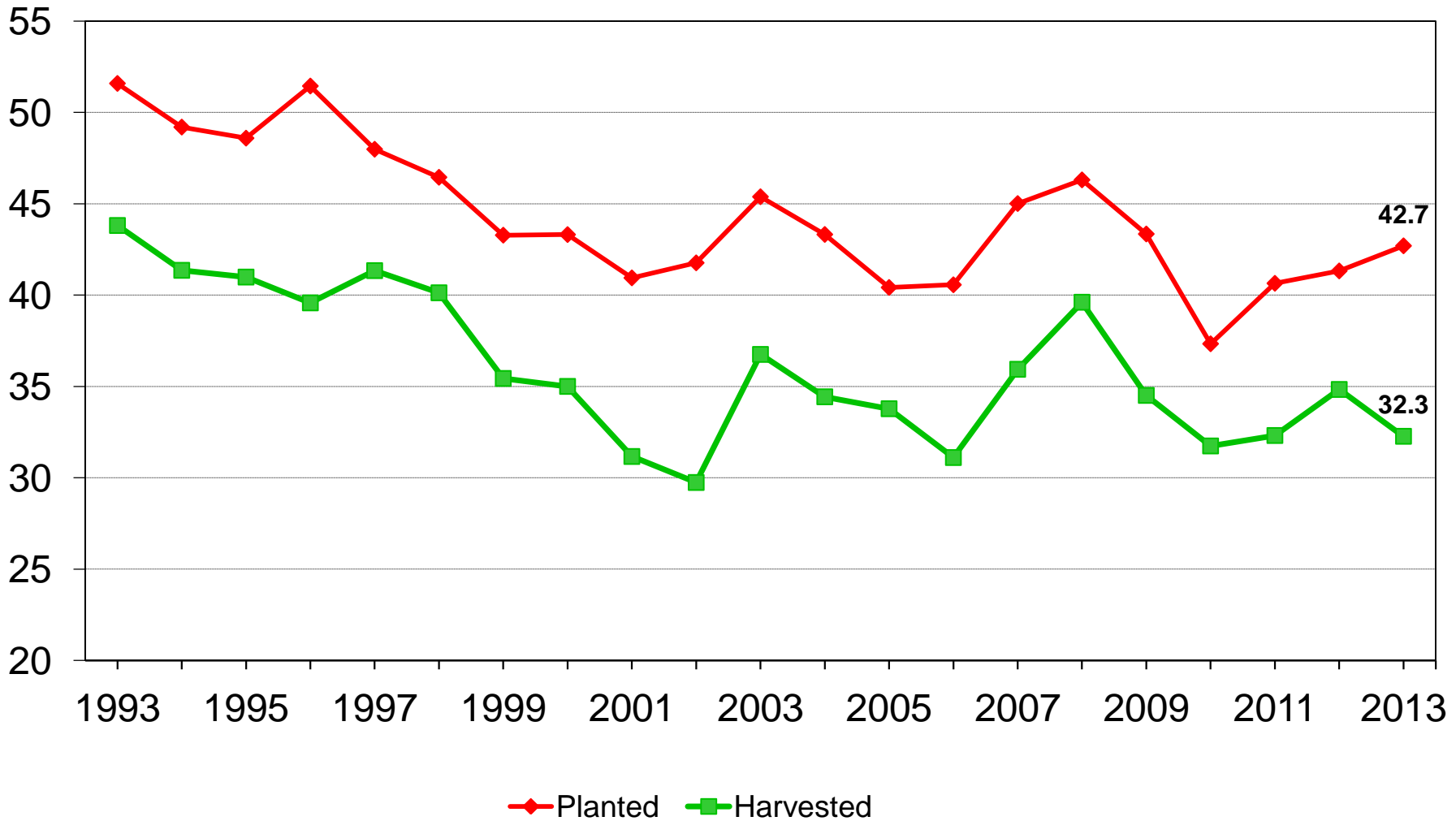
USDA-NASS  
6-28-13



# U.S. Winter Wheat Acres



Million acres

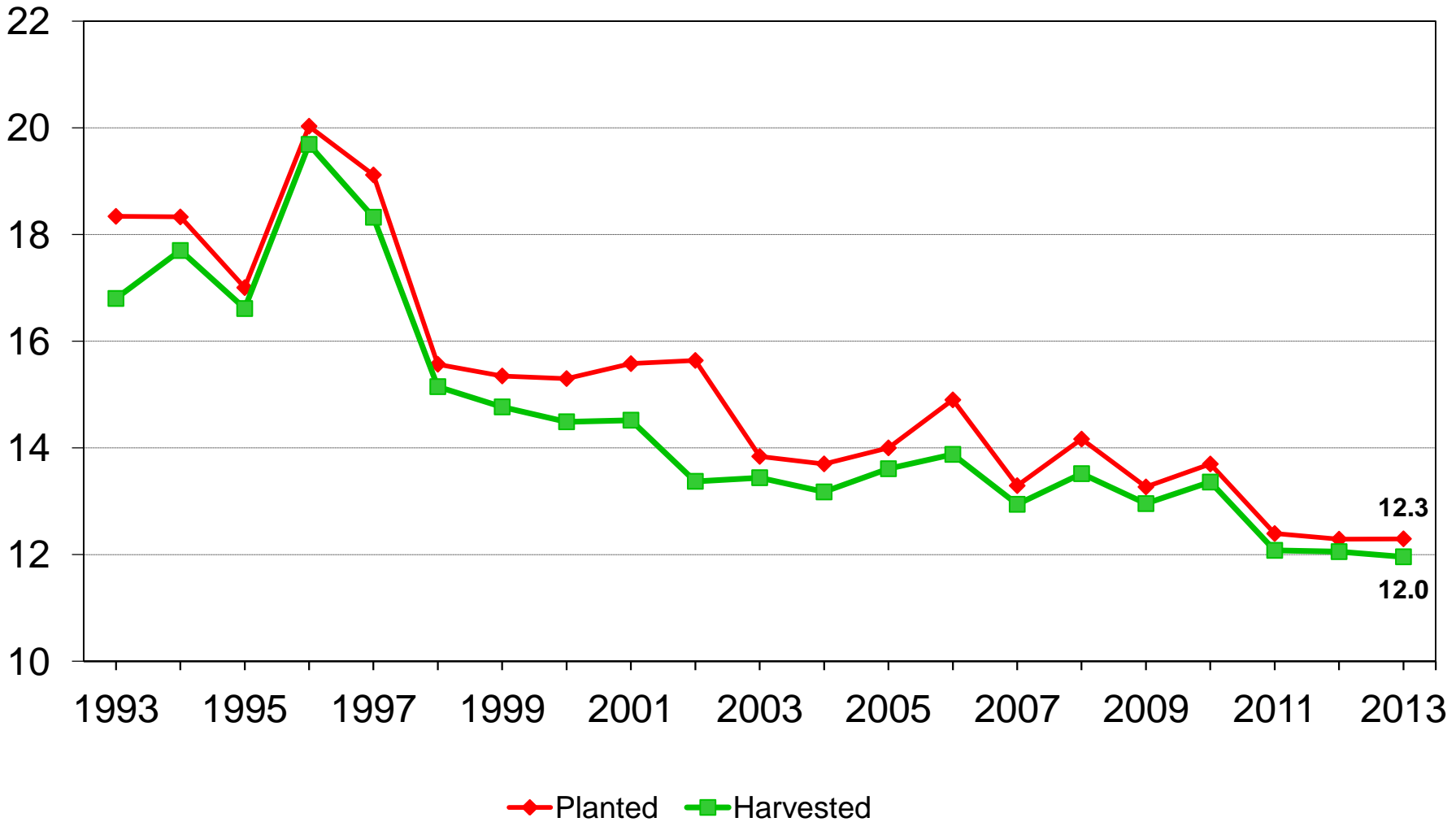




# U.S. Other Spring Wheat Acres



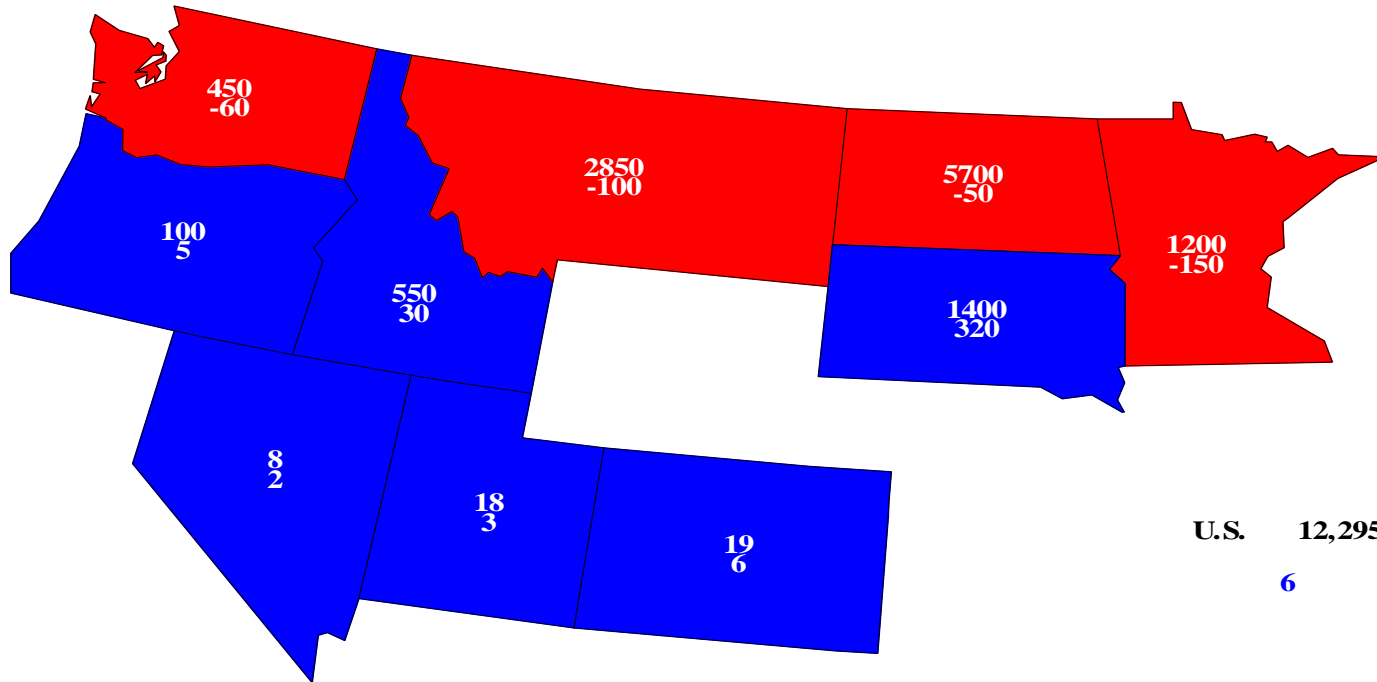
Million acres





# Other Spring Wheat Planted, 2013

## Acres(000) and Change From Previous Year

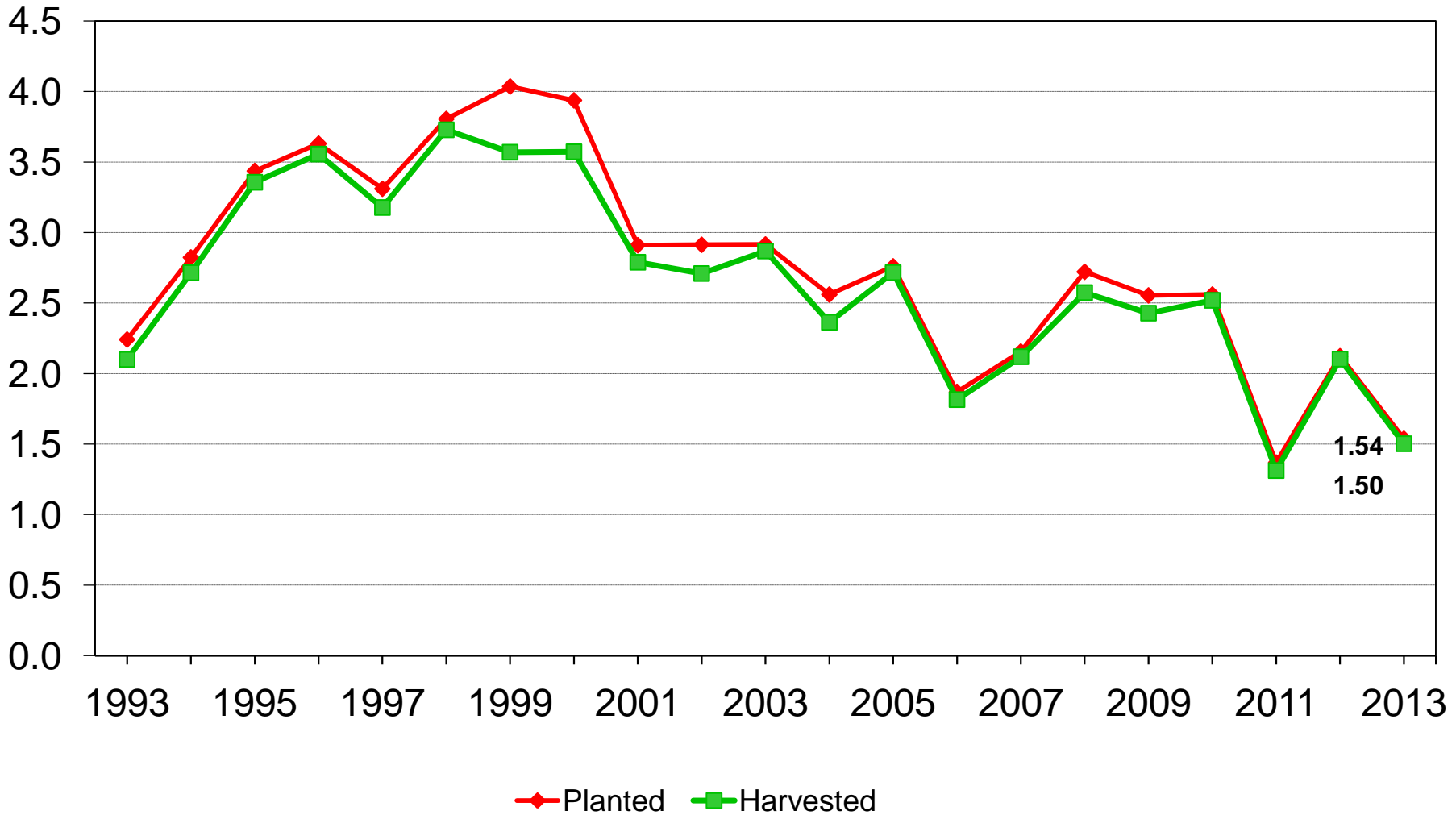




# U.S. Durum Wheat Acres



Million acres





# June 2013 Acreage

Crop	Planted Area		Change from March	Change from 2012
	March 2013	June 2013		
	<i>---Million acres---</i>		<i>---Percent---</i>	
Sorghum	7.62	7.20	- 5.6	+ 15.2
Oats	2.90	3.03	+ 4.3	+ 9.6
Barley	3.63	3.48	- 4.2	- 4.3
All Hay <sup>1/</sup>	56.4	56.6	+ 0.4	+ 0.6
Alfalfa <sup>1/</sup>	---	17.7	---	+ 2.1
Other <sup>1/</sup>	---	39.0	---	- <0.1

<sup>1/</sup> For harvest

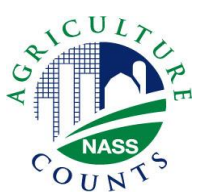




# June 2013 Acreage

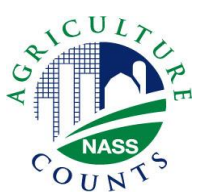
Crop	Planted Area		Change from March	Change from 2012
	March 2013	June 2013		
	<i>---Million acres---</i>		<i>---Percent---</i>	
Rice	2.61	2.47	- 5.4	- 8.5
Peanuts	1.19	1.10	- 7.9	- 33.0
Sugarbeets	1.20	1.21	+ 0.5	- 1.8
Sugarcane <sup>1/</sup>	---	908	---	+ 0.6
Dry Beans	1.50	1.46	- 2.7	- 16.2
Potatoes, Fall	---	0.957	---	- 4.4
Potatoes, Summer	---	0.047	---	- 5.6
Sweet Potatoes	0.122	0.119	- 2.7	- 8.8
Tobacco <sup>1/</sup>	0.350	0.350	+ <0.1	+ 4.0

<sup>1/</sup> For harvest



# June 2013 Acreage

Crop	Planted Area		Change from March	Change from 2012
	March 2013	June 2013		
	<i>---Million acres---</i>		<i>---Percent---</i>	
Sunflower	1.68	1.57	- 6.9	- 18.3
Canola	1.65	1.31	- 21.0	- 25.9
Flaxseed	0.272	0.223	- 18.0	- 35.2
Safflower	---	0.151	---	- 11.1
Mustard Seed	---	0.045	---	- 11.9
Rye	---	1.42	---	+ 9.2
Proso Millet	---	0.530	---	+ 58.2



# Biotech Varieties

## % of All Planted Acres

Crop	Herbicide Resistant Only		Insect Resistant (Bt) Only	
	2012	2013	2012	2013
Corn	21	14	15	5
Soybeans	93	93	---	---
Upland Cotton	17	15	14	8

Crop	Stacked Gene		All Biotech Varieties	
	2012	2013	2012	2013
Corn	52	71	88	90
Soybeans	---	---	93	93
Upland Cotton	63	67	94	90



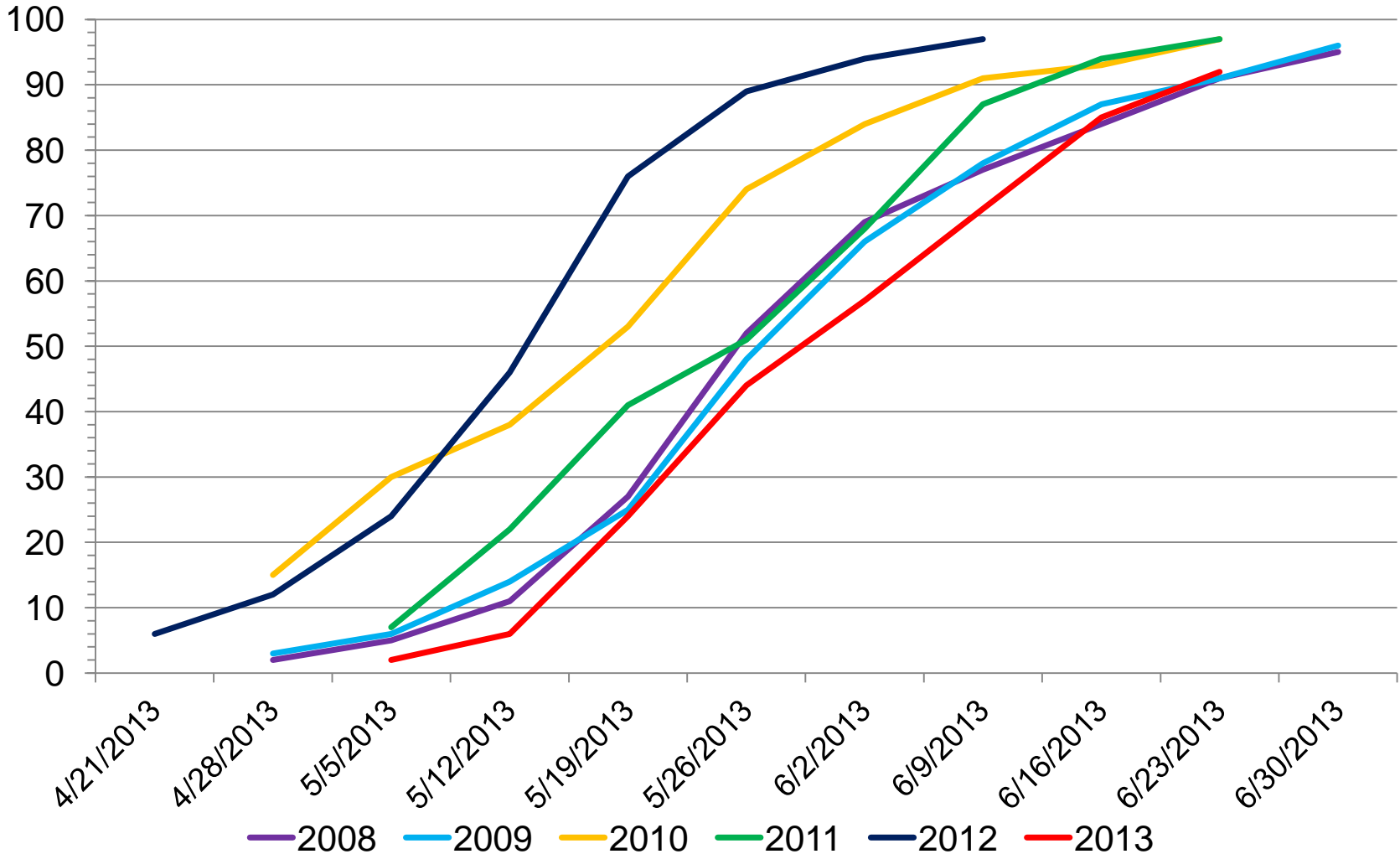
# Percent of Acres Remaining To Be Planted

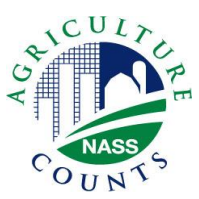
Crop	2011	2012	2013
		<i>---Percent---</i>	
Corn	4.3	0.7	3.4
Soybeans	25.9	6.5	26.9
Other Spring Wheat	17.4	0.0	6.3
Durum Wheat	30.7	<0.1	14.2



# U.S. Soybean Planting Progress 2008 - 2013

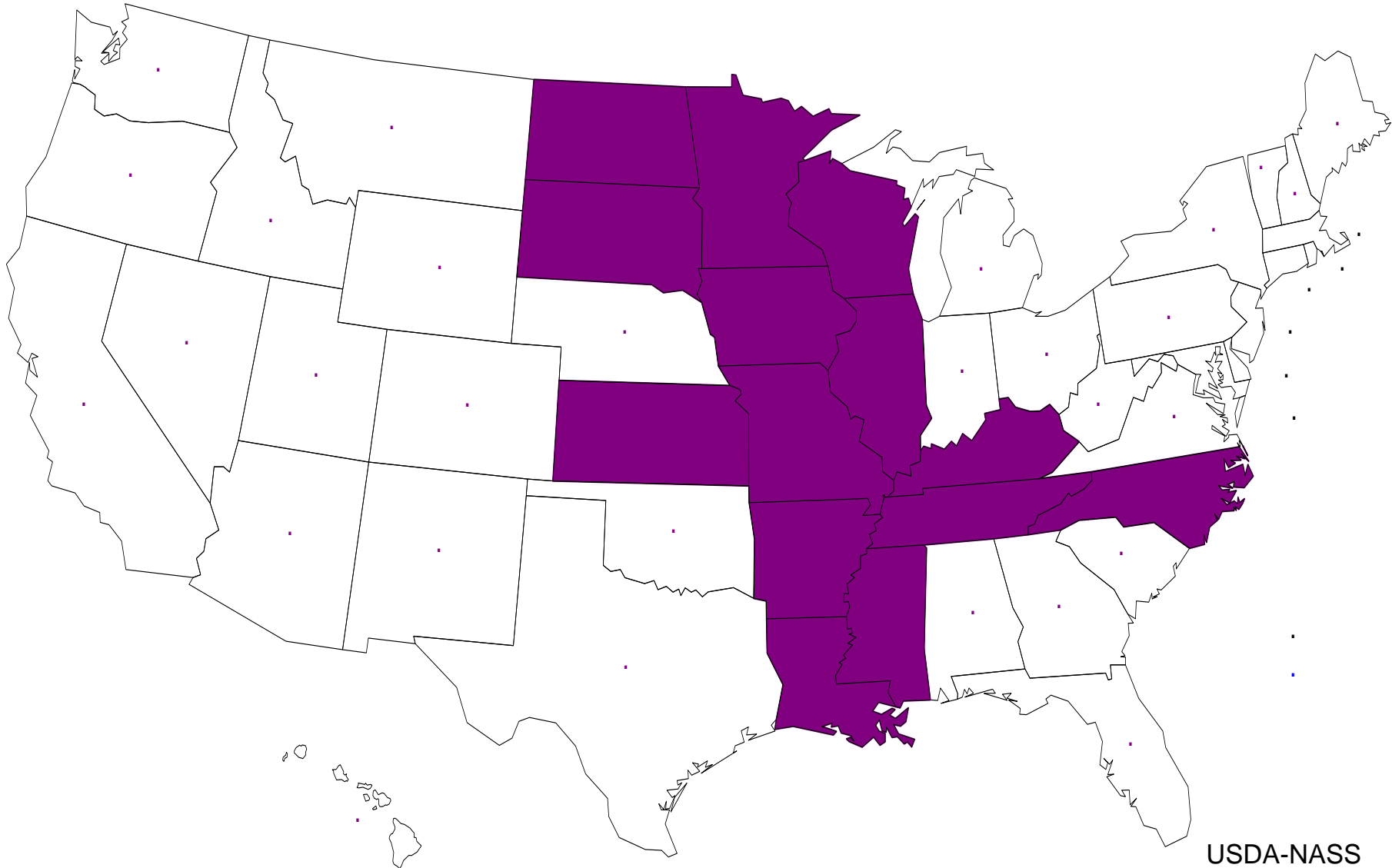
Percent





# 2013 Soybean Reinterview States

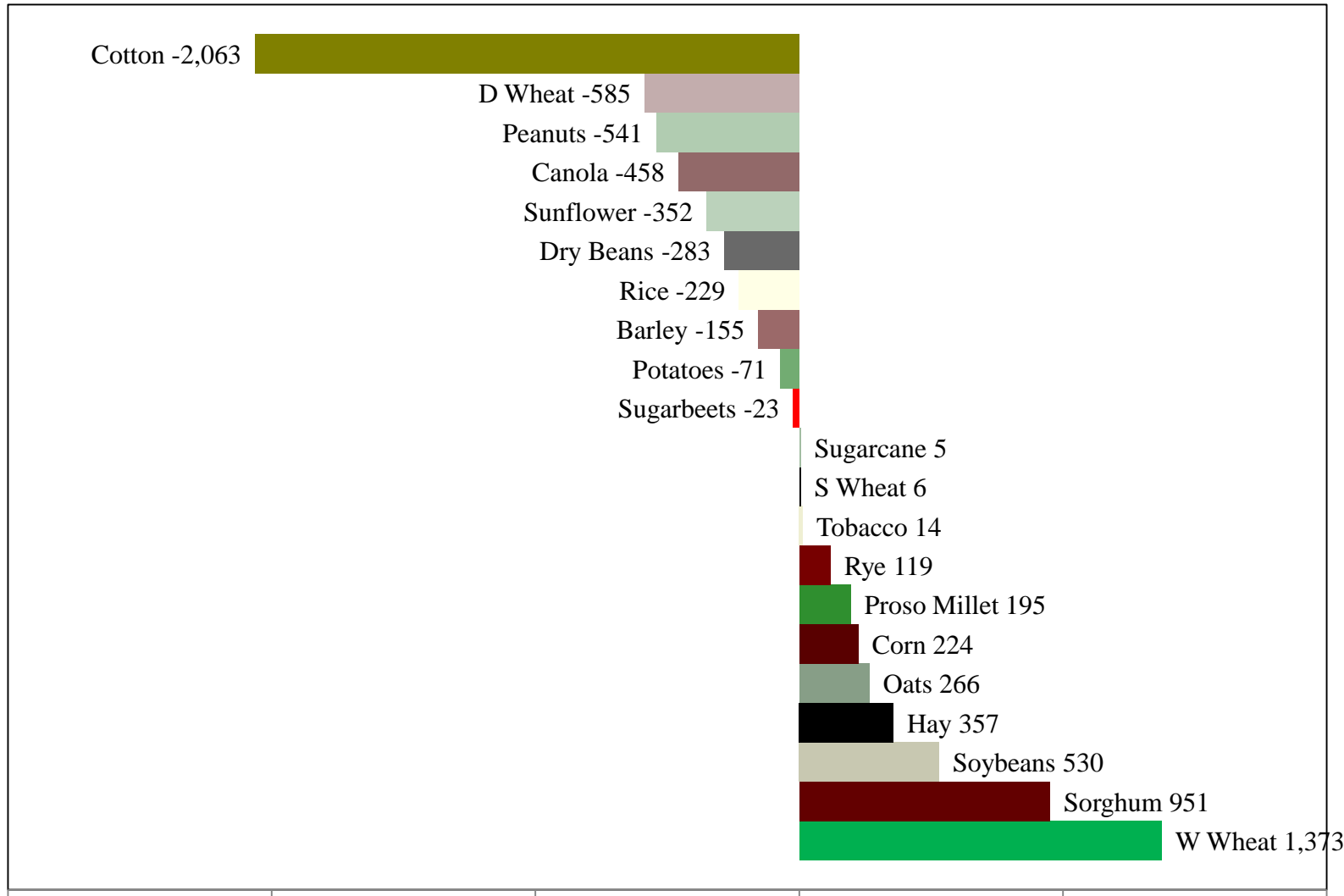
14 States Included



USDA-NASS  
6-28-13



# Change in Planted Acres (000) 2013 Compared With 2012

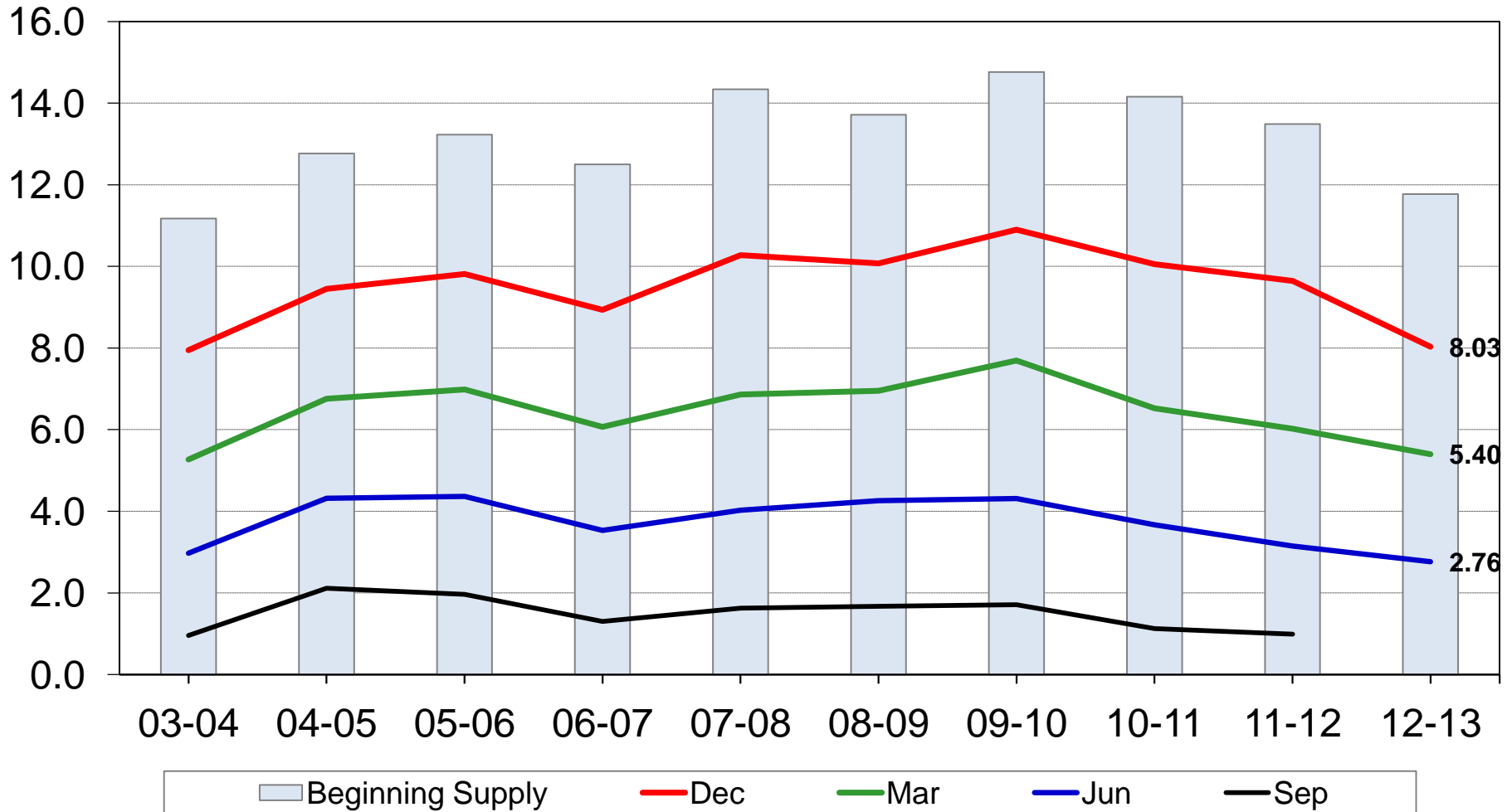




# U.S. Corn Stocks



Billion bushels

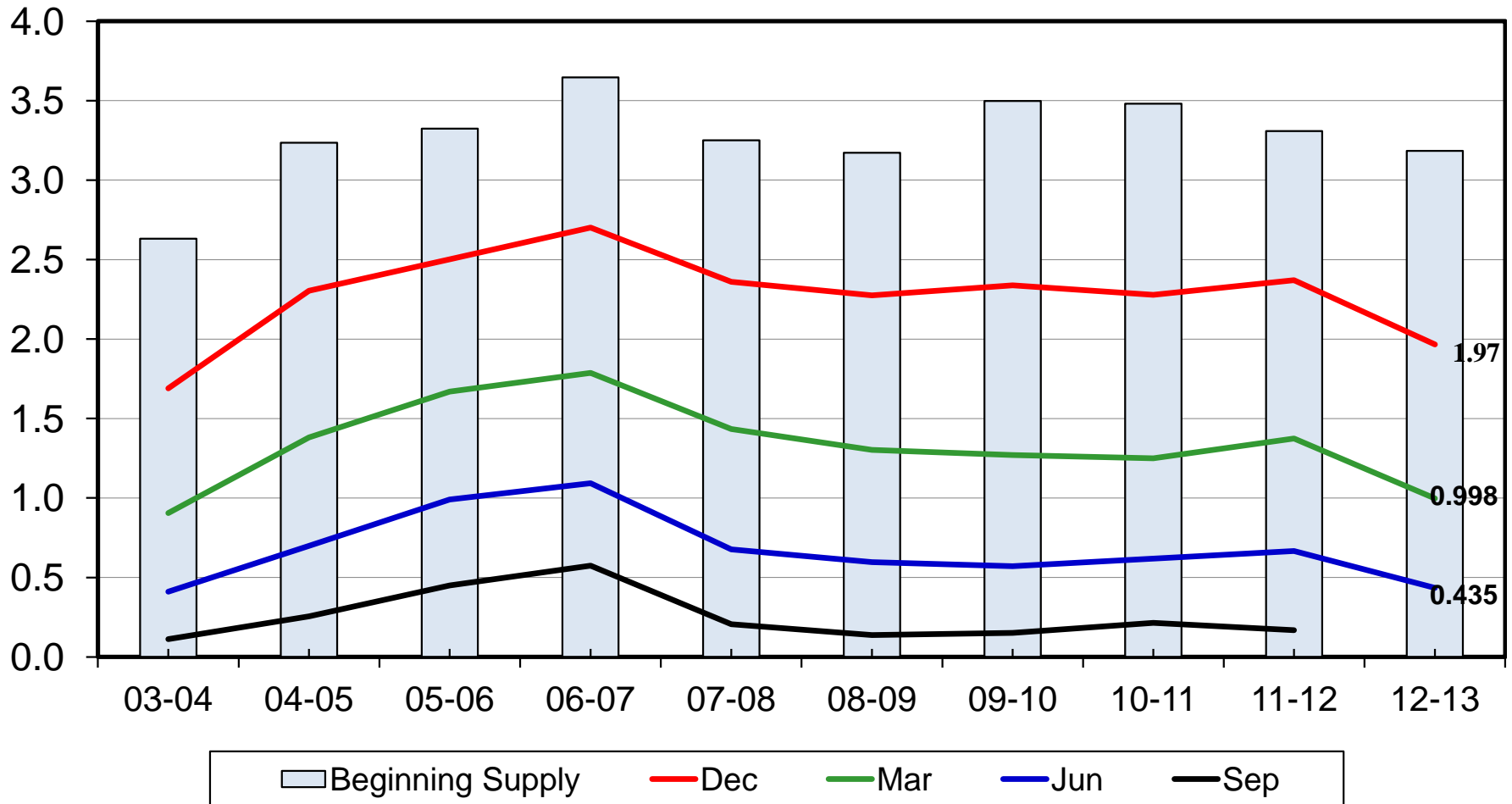


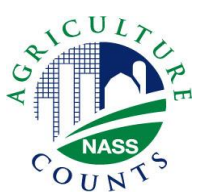




# U.S. Soybean Stocks

Billion bushels

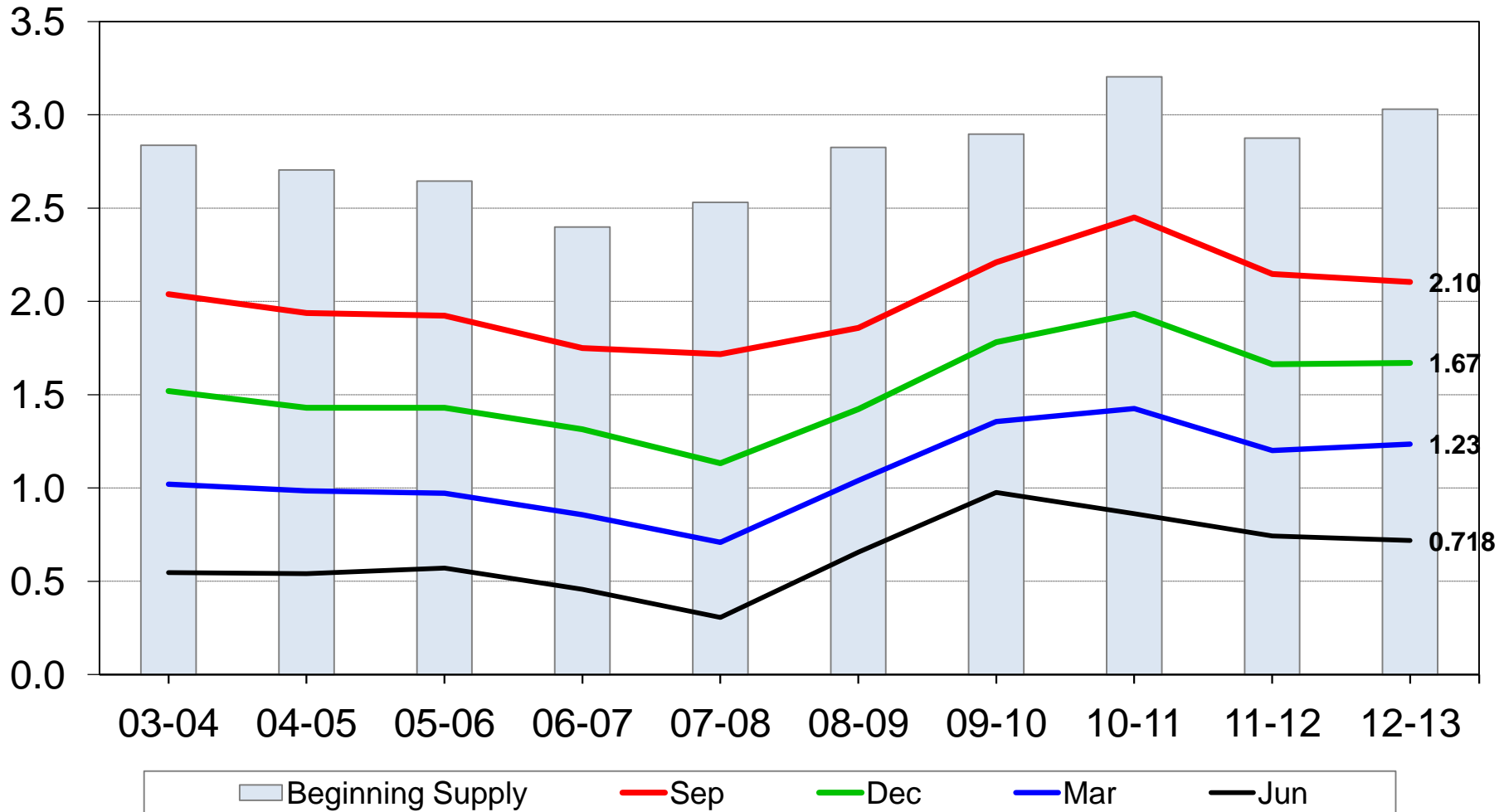




# U.S. All Wheat Stocks



Billion bushels





United States Department of Agriculture  
**National Agricultural Statistics Service**

---

---

Upcoming Reports

June 28      Quarterly Hogs and Pigs

July 11      Crop Production

July 31      Agricultural Prices

August 12    Crop Production



United States Department of Agriculture  
**National Agricultural Statistics Service**

---

---



All Reports Available At

[www.nass.usda.gov](http://www.nass.usda.gov)

For Questions

202-720-2127

800-727-9540

[nass@nass.usda.gov](mailto:nass@nass.usda.gov)