



United States Department of Agriculture
National Agricultural Statistics Service



**PROSPECTIVE PLANTINGS
GRAIN STOCKS
RICE STOCKS**

Executive Summary

MARCH 31, 2014

12:00 PM



Contents

Field Crops	Stocks
Principal Crops Planted Acres	Corn
Feed Grain Acres	Soybean
Food Grain Acres	All Wheat
Oilseed Acres	Rough Rice
Other Crop Acres	

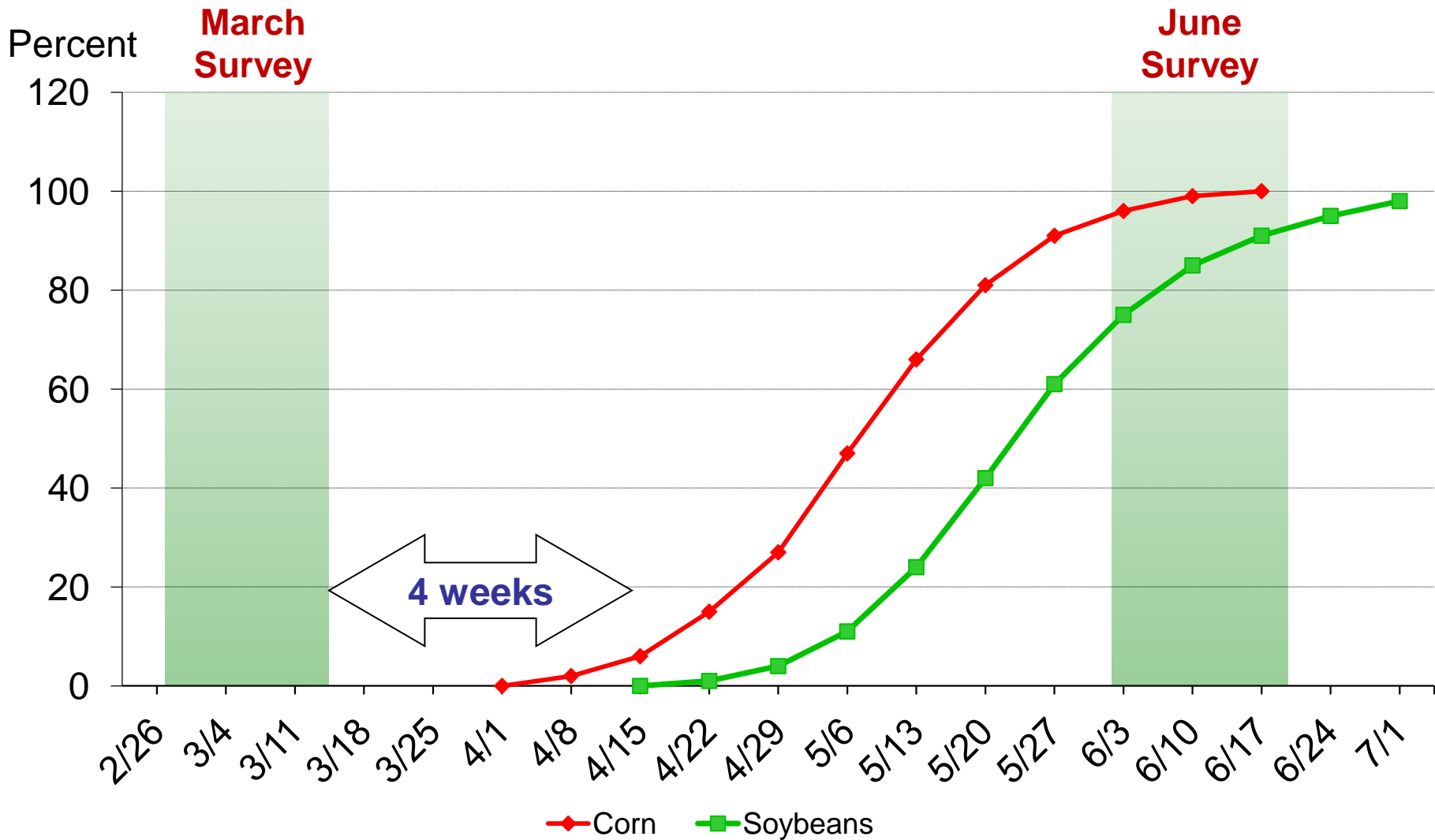
Survey Overview

	March Ag Survey	Off-Farm Grain Stocks Survey
Survey Type	Farmer Reported	Reported
Collection Method	Mail, Phone, Internet, Personal Interview	Mail, Phone, Internet, Personal Interview
Items Collected	Acreage Intentions, On-Farm Stocks	Grains and Oilseeds On Hand
States	All except AK and HI	All except AK and HI
Sample Size	~ 84,000	~ 8,800 Facilities
Collection Period	Feb 27 – Mar 18	Feb 27 – Mar 20



Acres Intention vs. Actual Planted Acres

Usual Planting Progress





U.S. Principal Crops Planted Acres



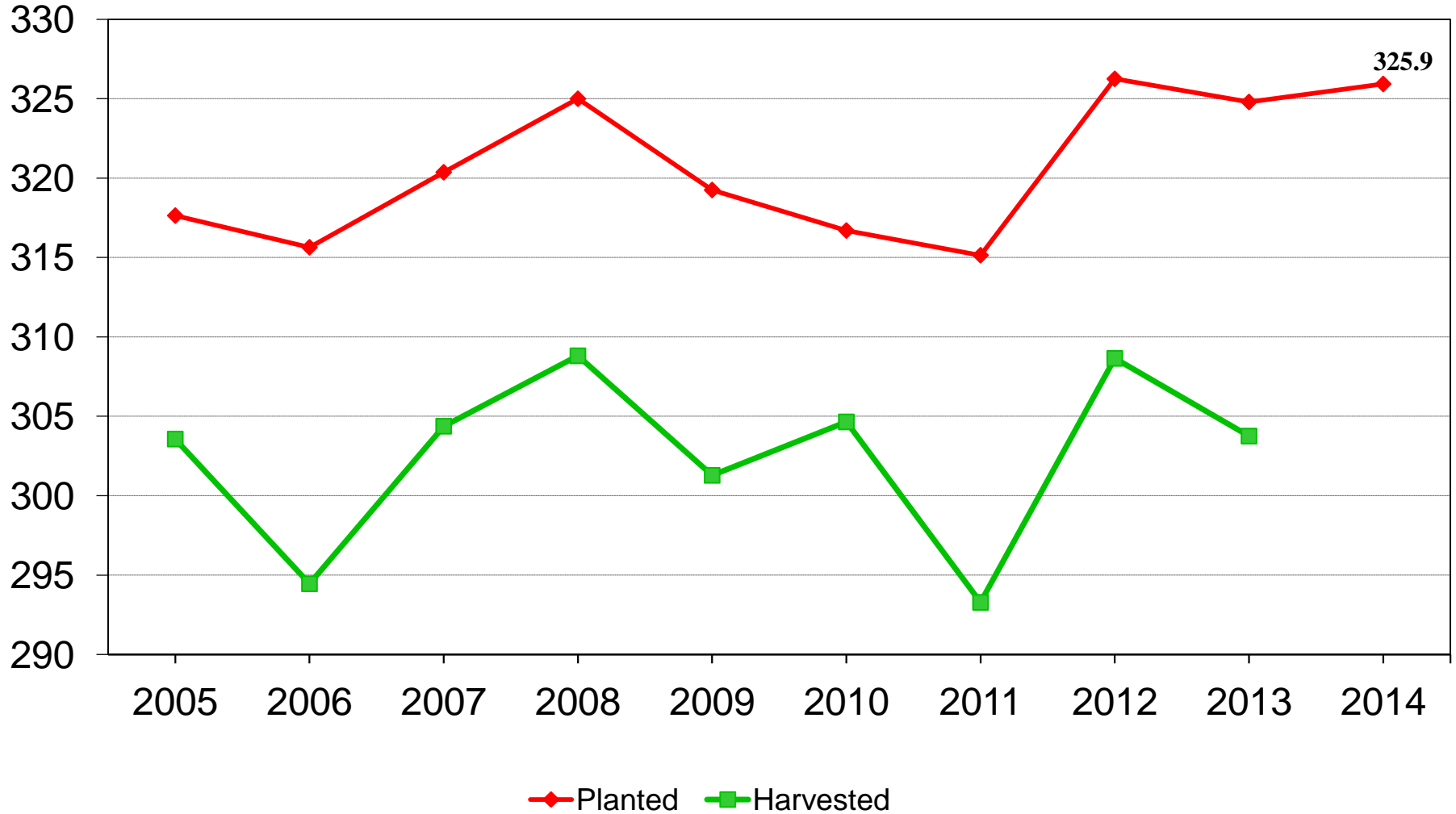
Year	Principal Crops	Change from Previous Year
<i>--Million Acres--</i>		
2005	317.6	- 4.7
2006	315.6	- 2.0
2007	320.4	+ 4.8
2008	325.0	+ 4.6
2009	319.3	- 5.7
2010	316.7	- 2.6
2011	315.1	- 1.6
2012	326.3	+11.2
2013	324.8	- 1.5
2014	325.9	+1.1



U.S. Principal Crop Acres



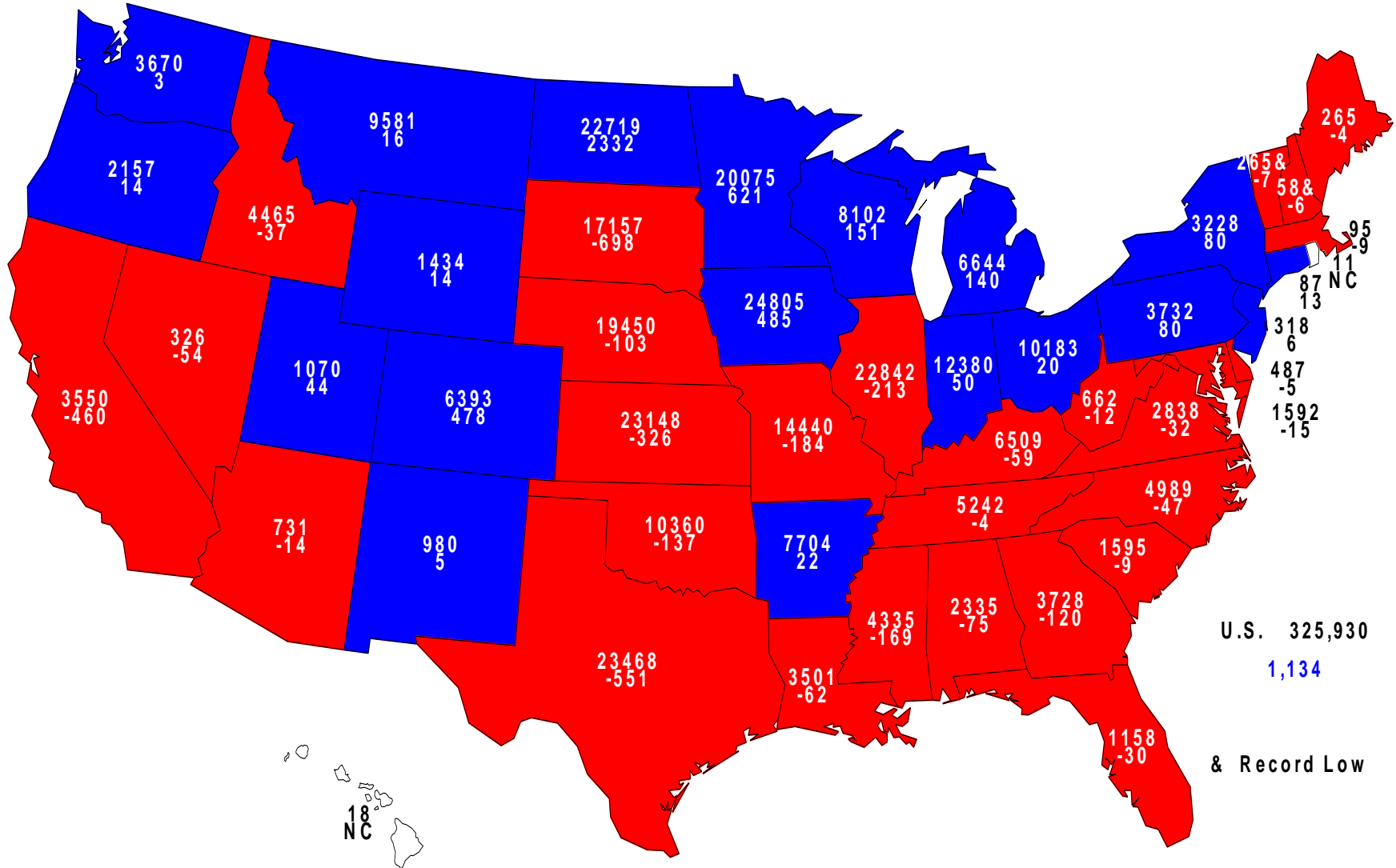
Million acres





2014 Principal Crops Planted

Acres (000) and Change From Previous Year

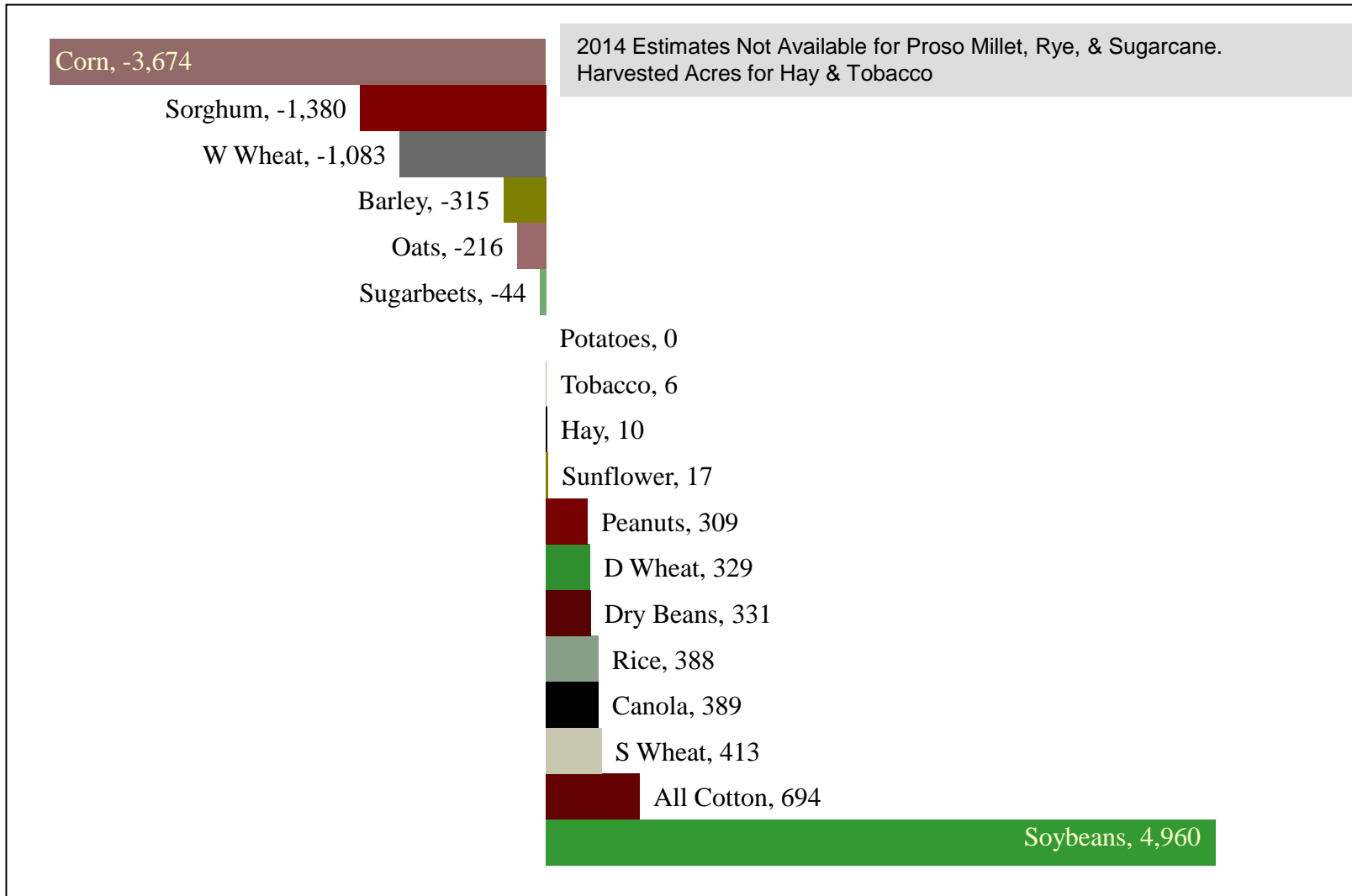


U.S. 325,930
1,134
& Record Low



Change in Planted Acres (000)

2014 Compared With 2013

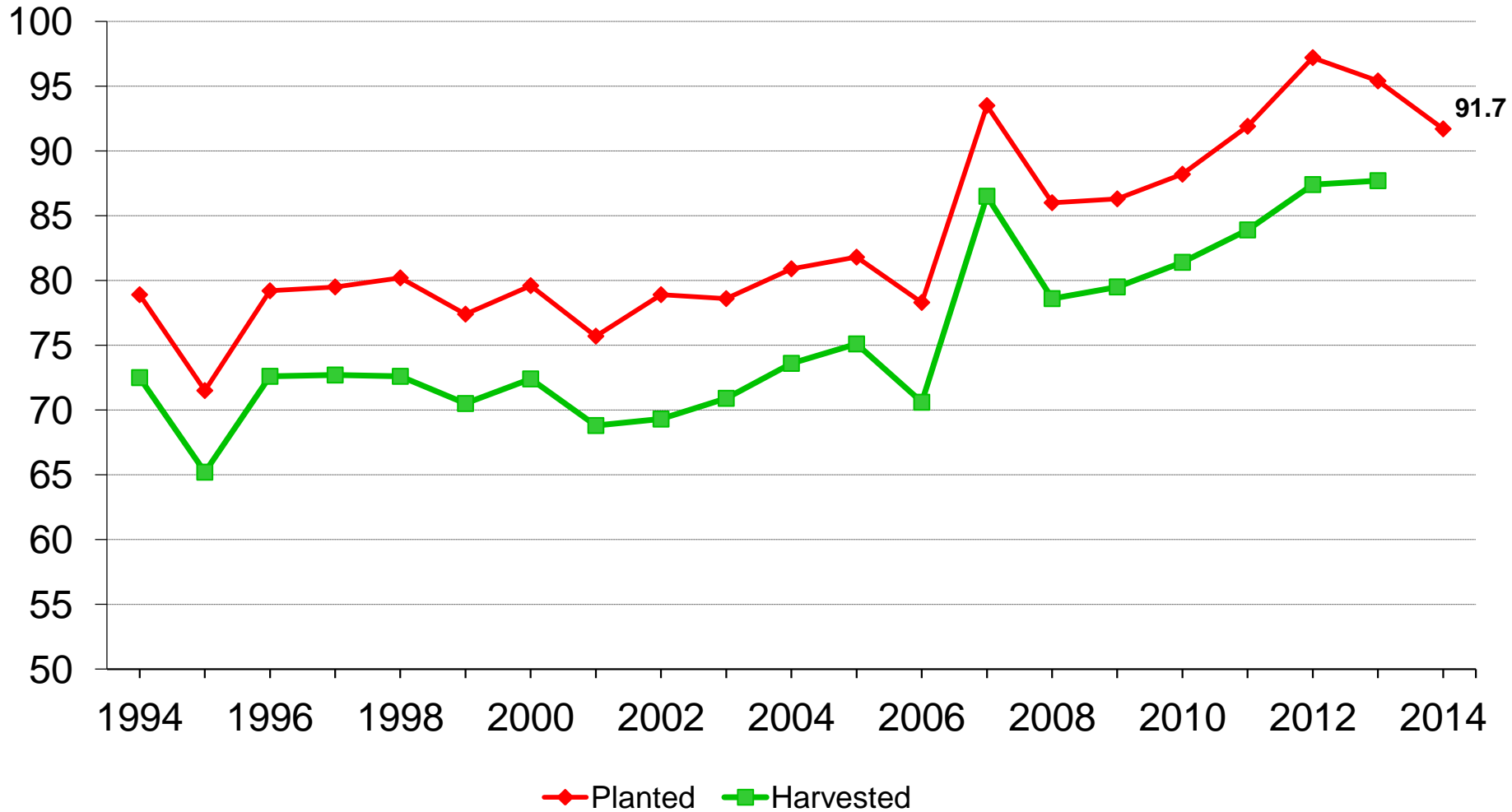




U.S. Corn Acres



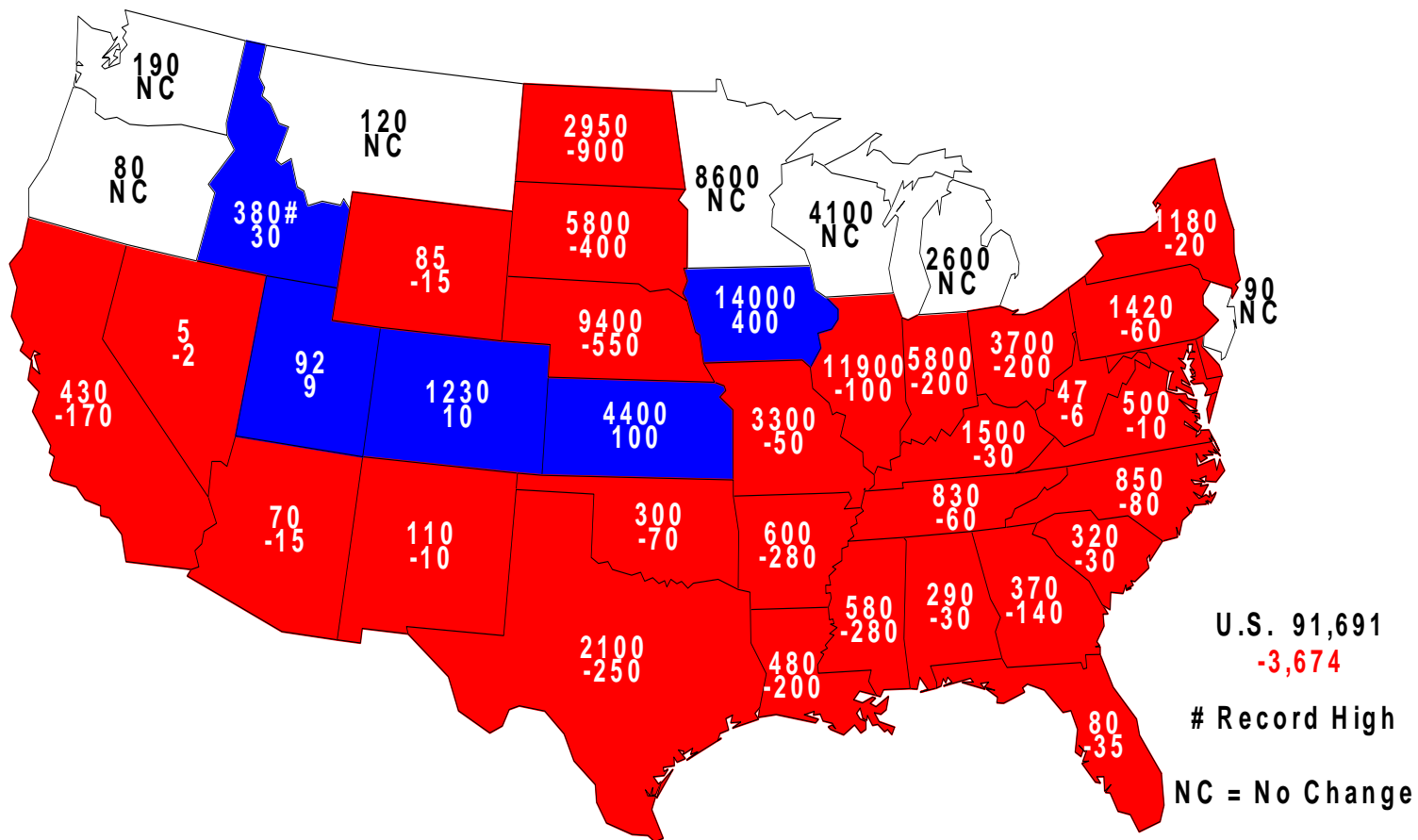
Million acres





2014 Corn Planted

Acres (000) and Change From Previous Year

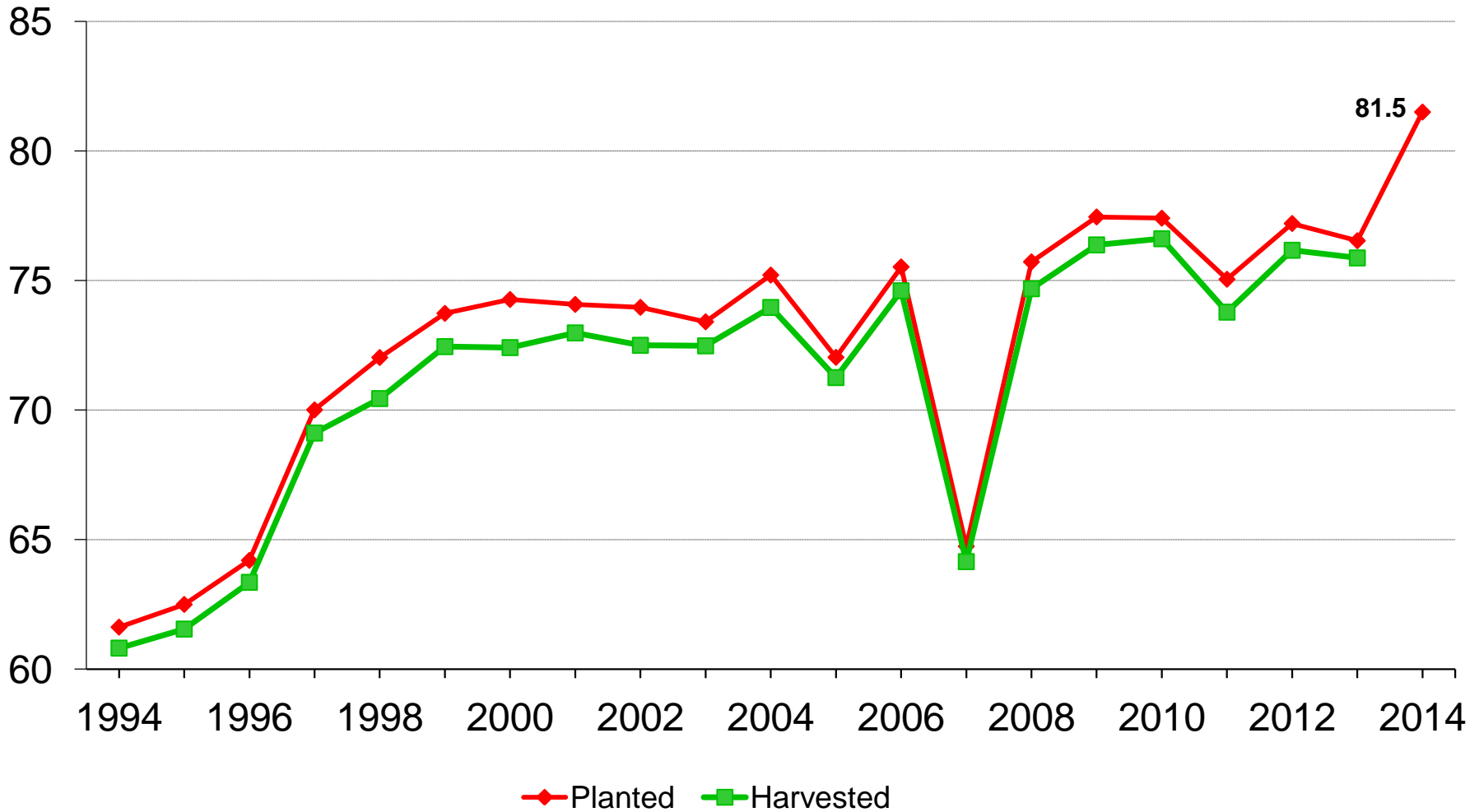




U.S. Soybean Acres



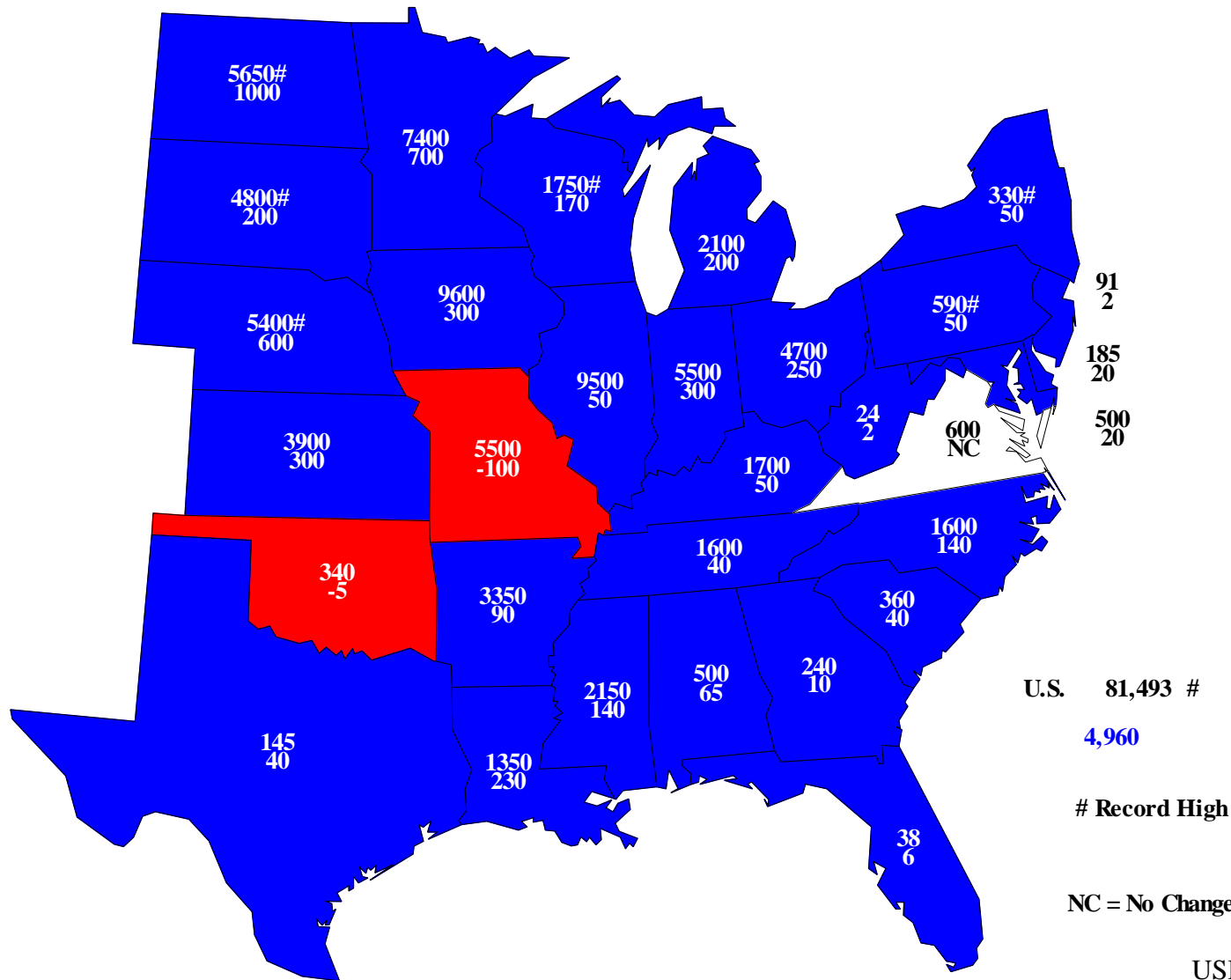
Million acres





2014 Soybeans Planted

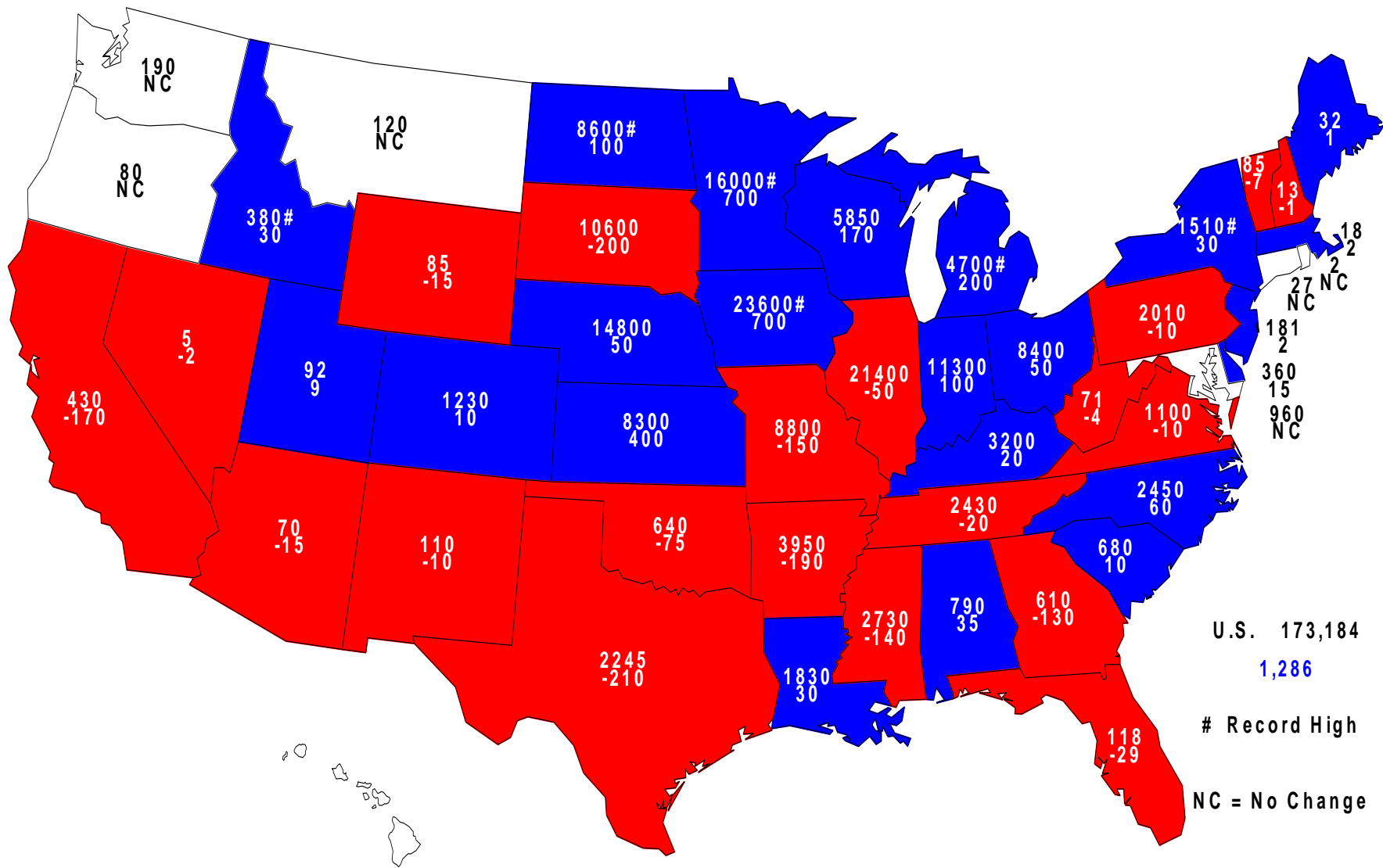
Acres (000) and Change From Previous Year





2014 Combined Corn & Soybeans Planted

Acres (000) and Change From Previous Year



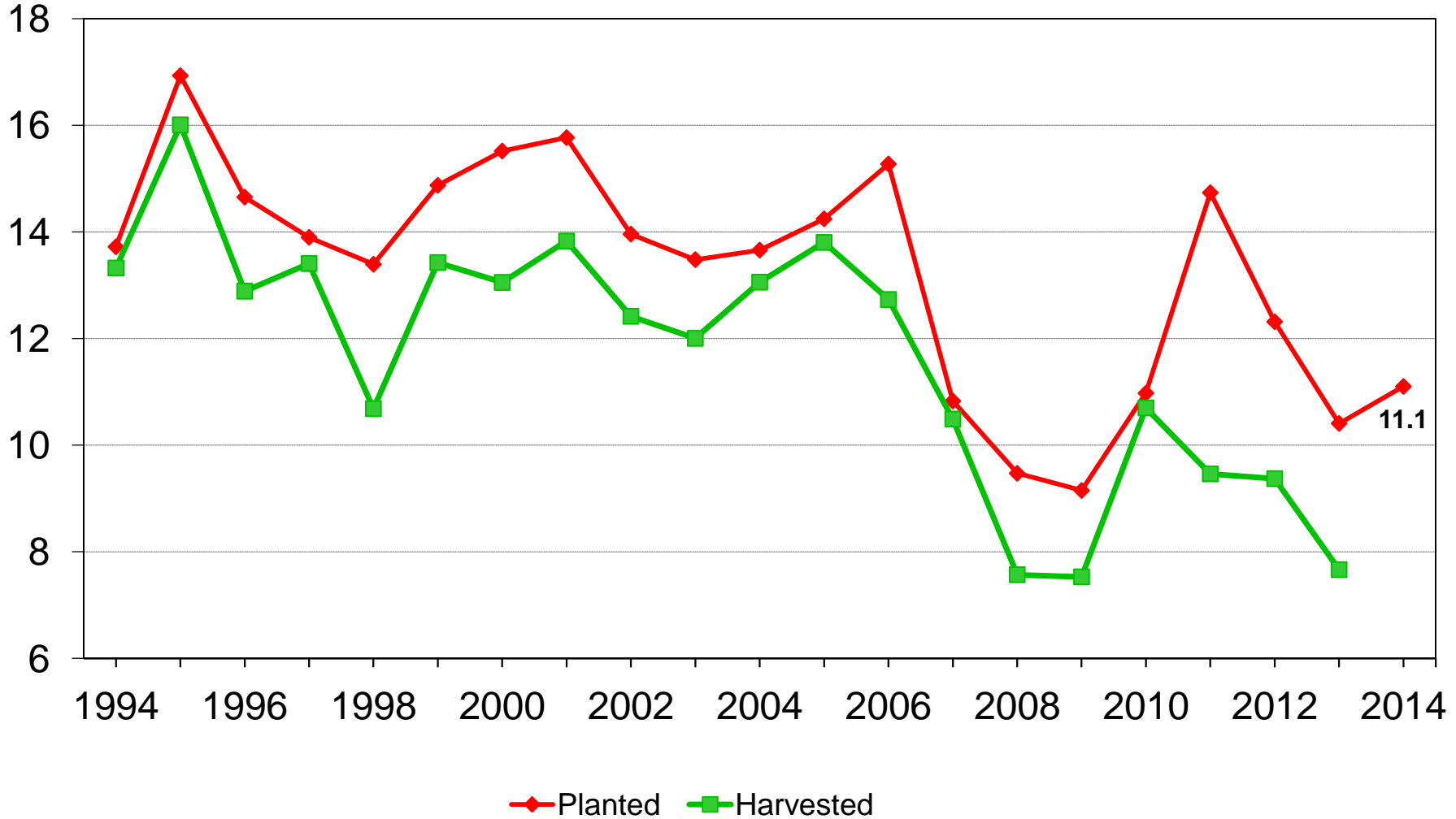
U.S. 173,184
 1,286
 # Record High
 NC = No Change



U.S. All Cotton Acres



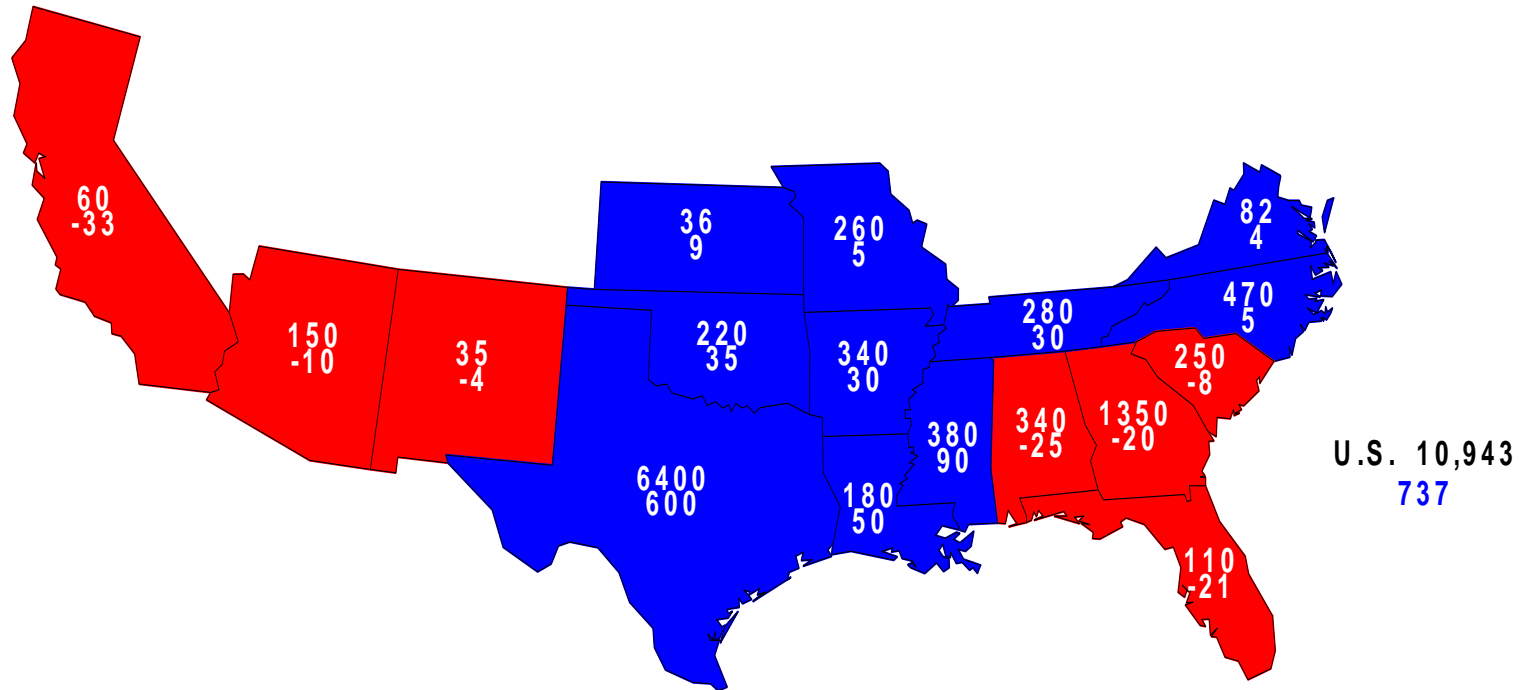
Million acres





2014 Upland Cotton Planted

Acres (000) and Change From Previous Year

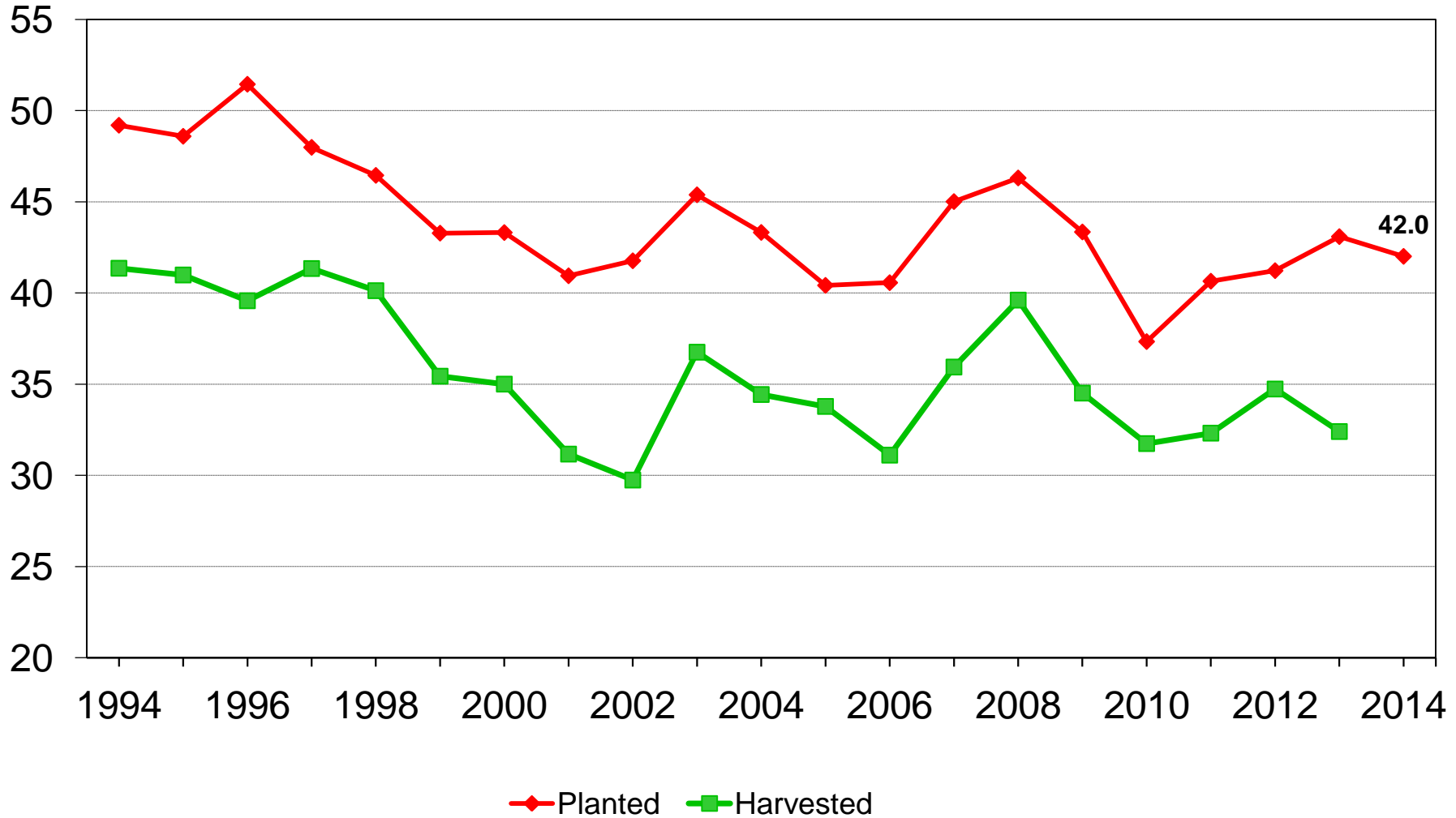




U.S. Winter Wheat Acres



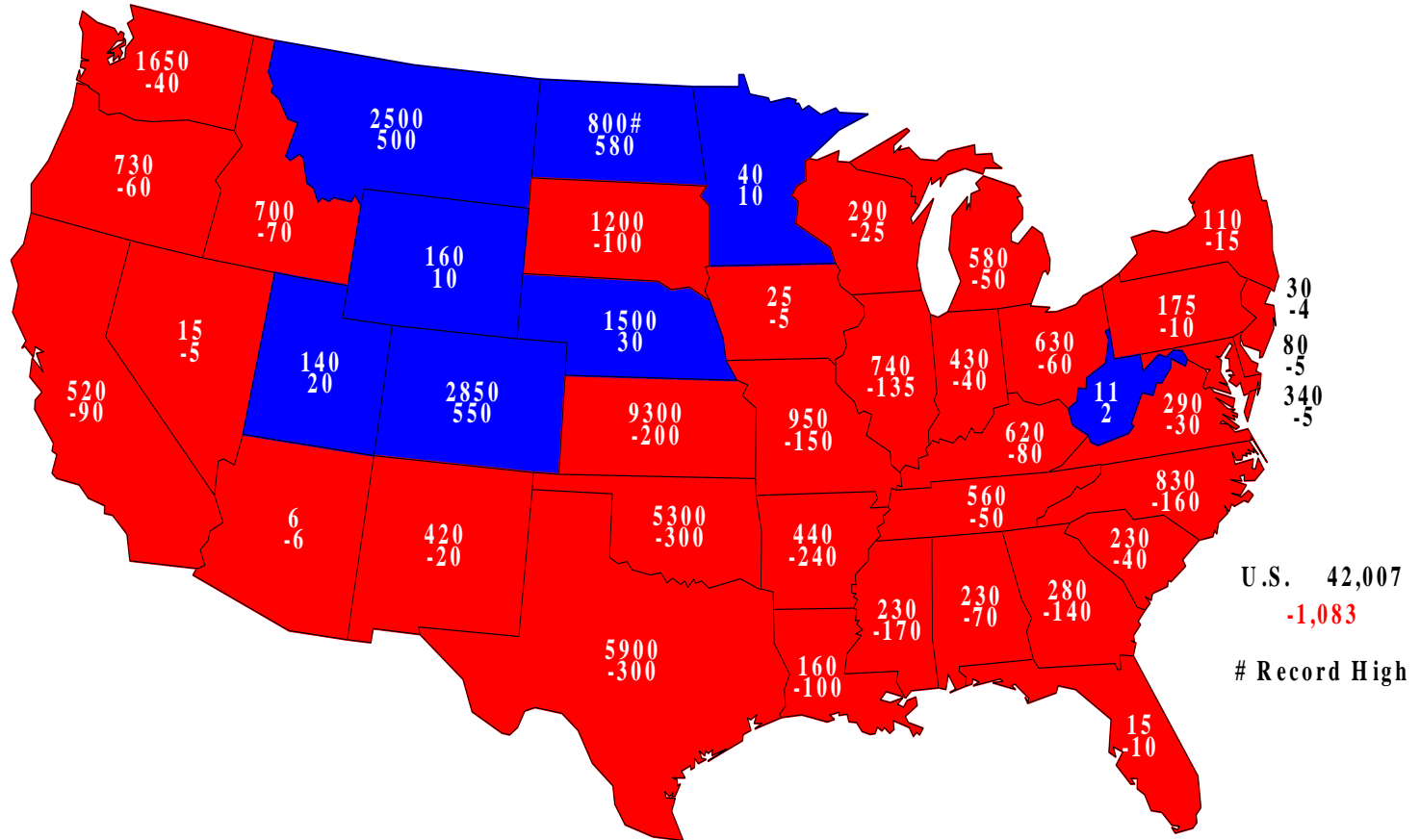
Million acres





Winter Wheat Planted, 2014

Acres (000) and Change From Previous Year

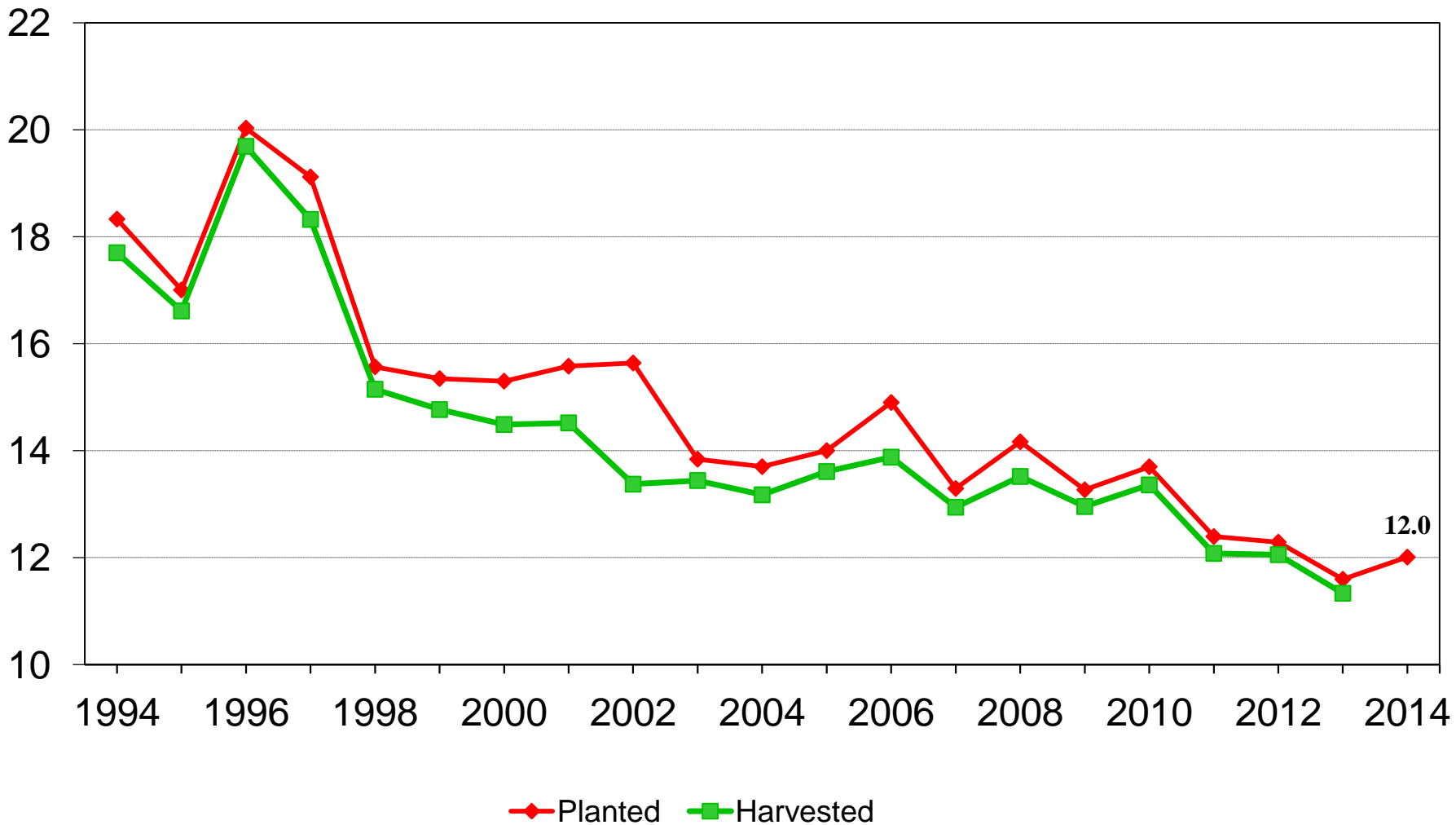




U.S. Other Spring Wheat Acres



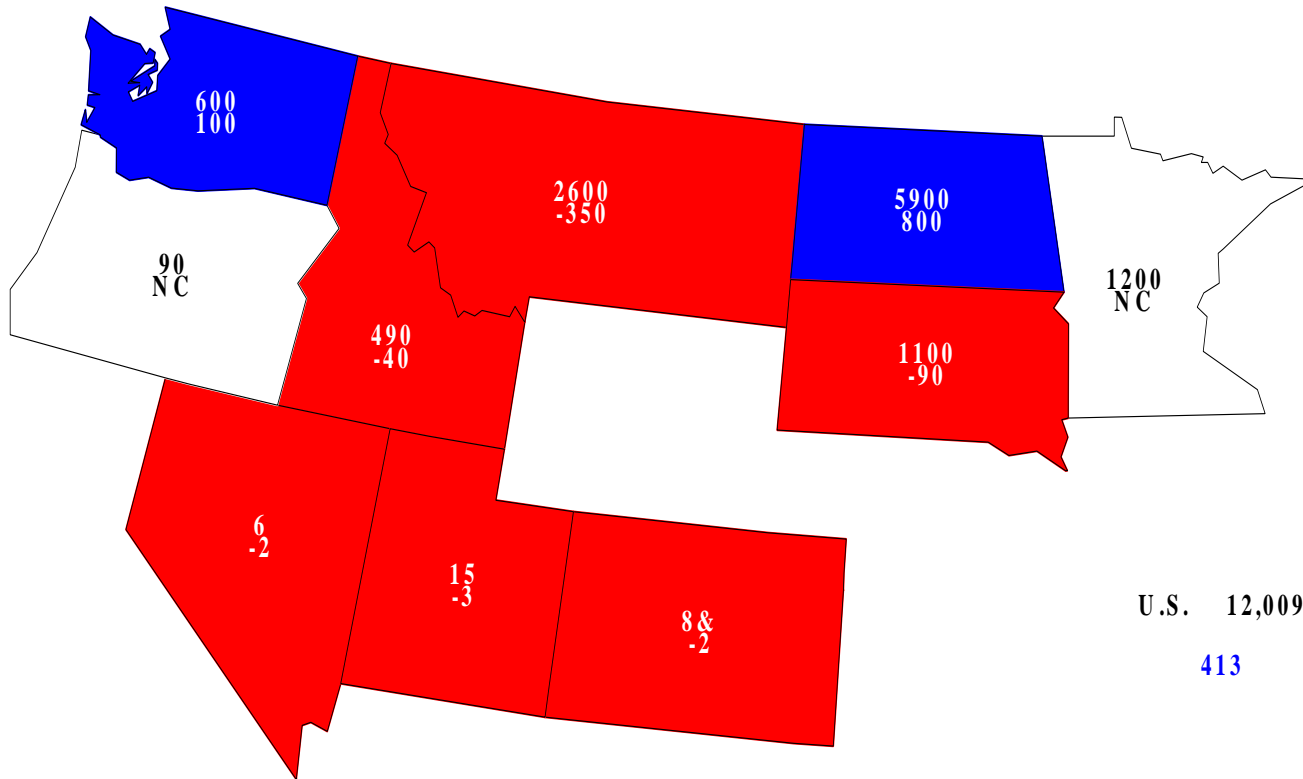
Million acres





Other Spring Wheat Planted, 2014

Acres (000) and Change From Previous Year



U.S. 12,009

413

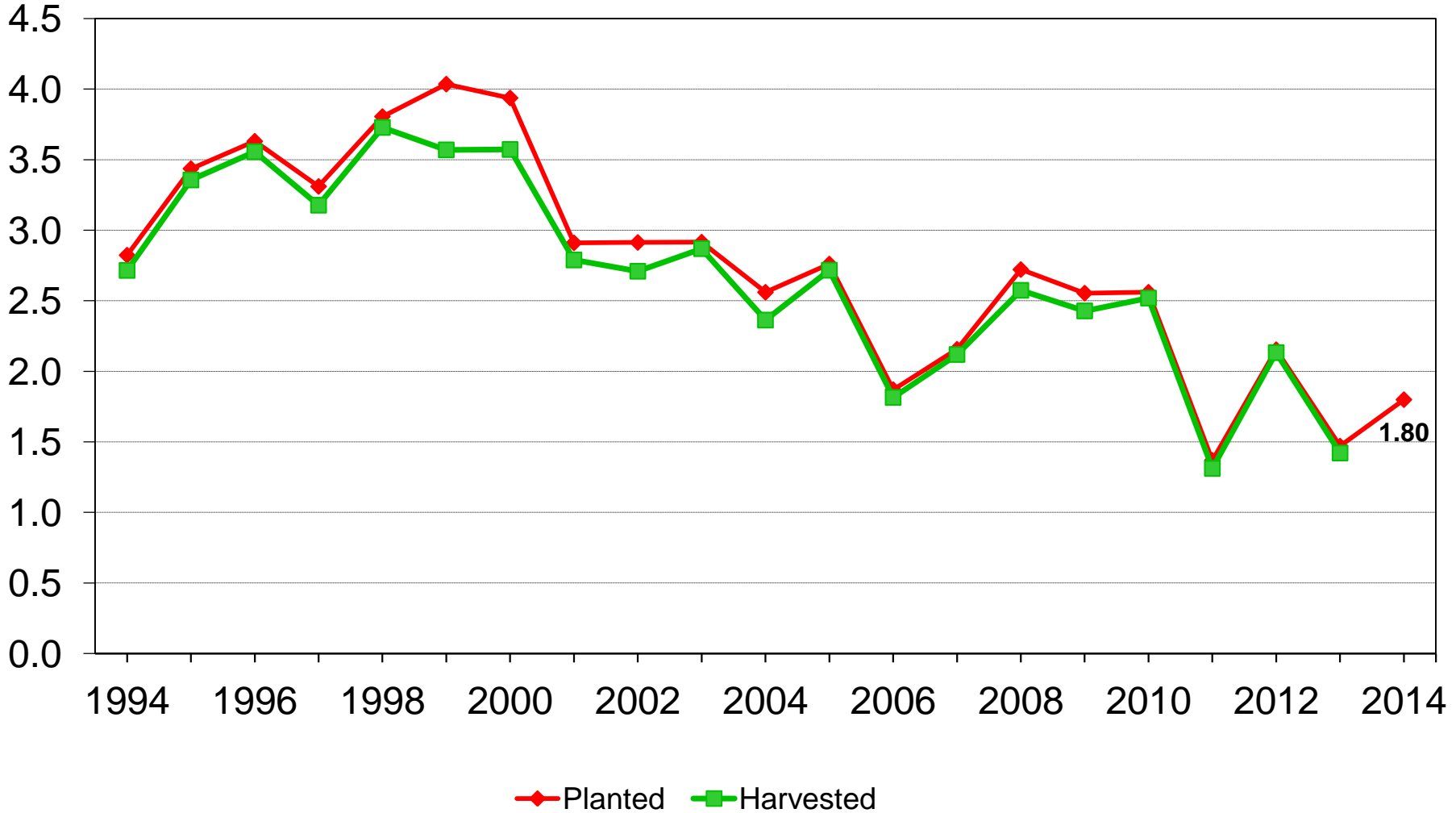
& Record Low
NC = No Change



U.S. Durum Wheat Acres



Million acres





March 2014 Prospective Plantings

Feed Grains	2014 Intentions	2013 Planted	% Change
	<i>--Million Acres--</i>		
Corn	91.7	95.4	-3.9
Sorghum	6.68	8.06	-17.1
Oats	2.79	3.01	-7.2
Barley	3.17	3.48	-9.1



March 2014 Prospective Plantings

Food Grains	2014 Intentions	2013 Planted	% Change
	<i>--Million Acres--</i>		
All Wheat	55.8	56.2	-0.6
Winter Wheat	42.0	43.1	-2.5
Durum Wheat	1.80	1.47	+22.4
Other Spring Wheat	12.0	11.6	+3.6
Rice	2.88	2.49	+15.6



March 2014 Prospective Plantings

Oilseeds	2014 Intentions	2013 Planted	% Change
	<i>--Million Acres--</i>		
Soybeans	81.5	76.5	+6.5
Peanuts	1.38	1.07	+29.0
Sunflower	1.59	1.58	+1.0
Canola	1.74	1.35	+28.9
Flaxseed	0.326	0.181	+80.1
All Cotton	11.1	10.4	+6.7
Upland Cotton	10.9	10.2	+7.2
American Pima	0.158	0.201	-21.4



March 2014 Prospective Plantings

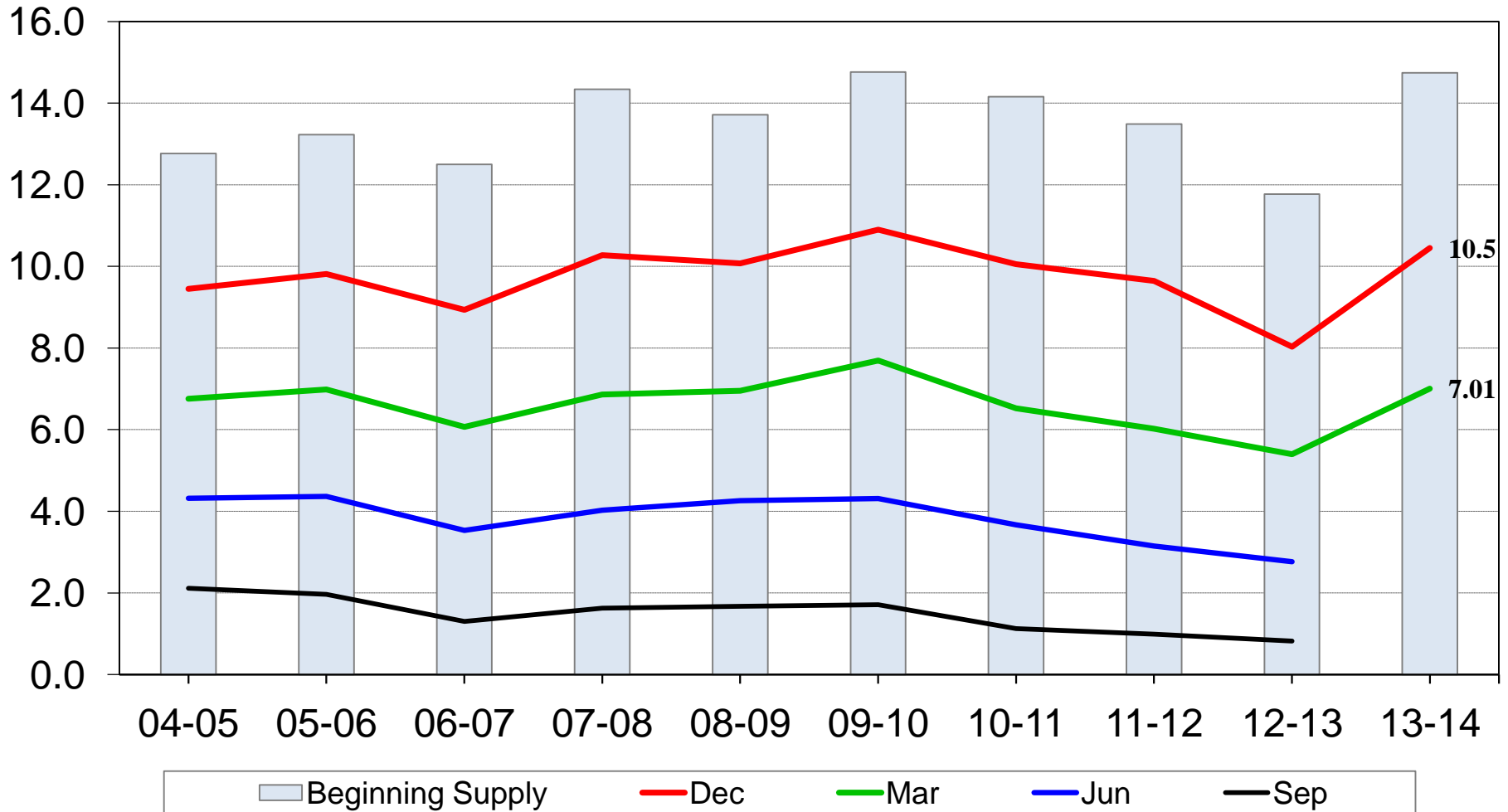
Other Crops	2014 Intentions	2013 Planted	% Change
<i>--Million Acres--</i>			
All Hay (Harvested)	58.3	58.3	+<0.1
Sugarbeets	1.15	1.20	-4.2
Tobacco (Harvested)	0.362	0.356	+1.8
Spring Potatoes	0.076	0.076	-0.5
Sweet Potatoes	0.126	0.116	+9.2
Dry Edible Beans	1.69	1.35	+24.5
Dry Edible Peas	0.921	0.860	+7.1
Austrian Winter Peas	0.029	0.018	+58.3
Lentils	0.320	0.362	-11.6



U.S. Corn Stocks



Billion bushels

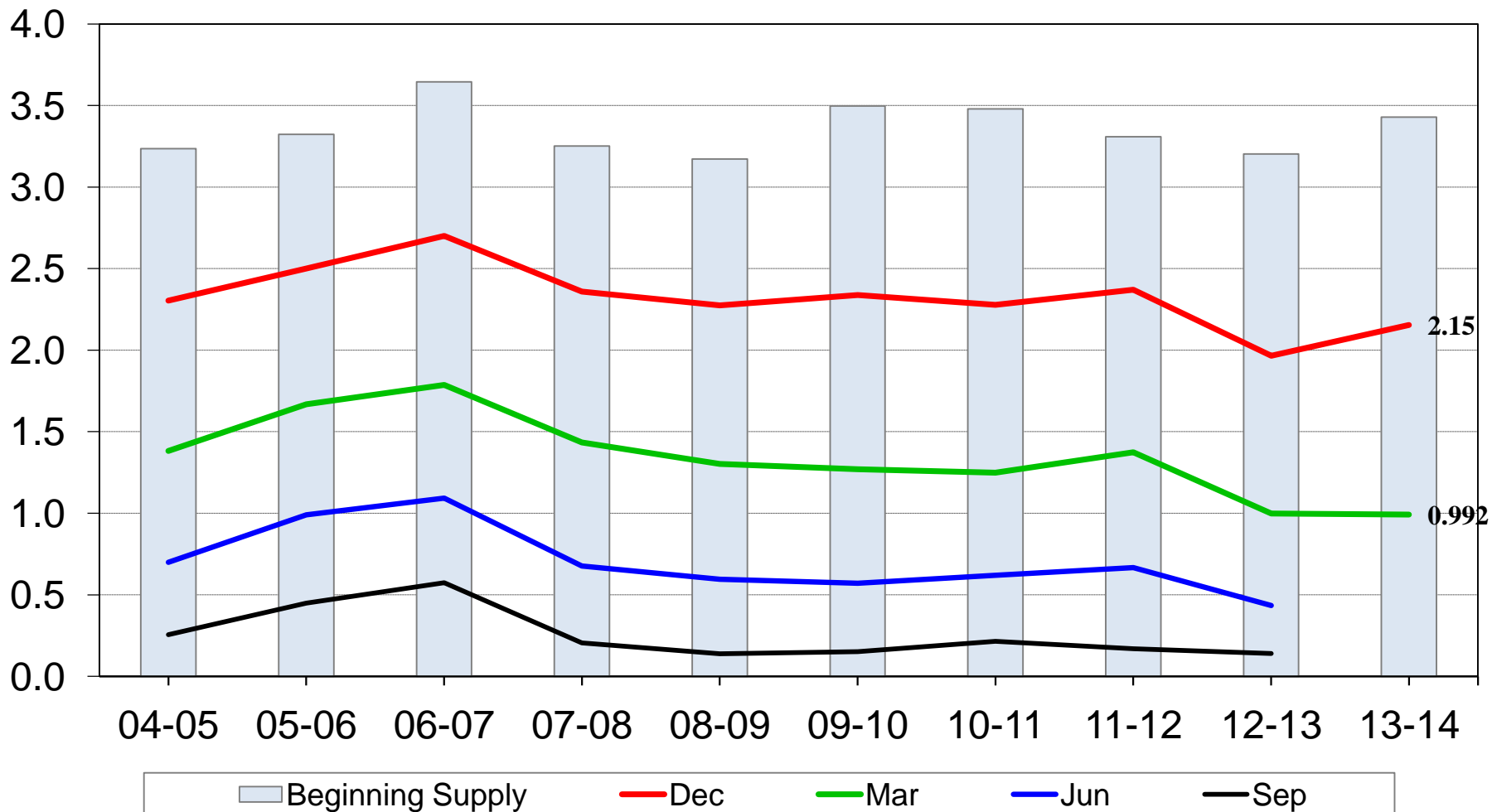




U.S. Soybean Stocks



Billion bushels

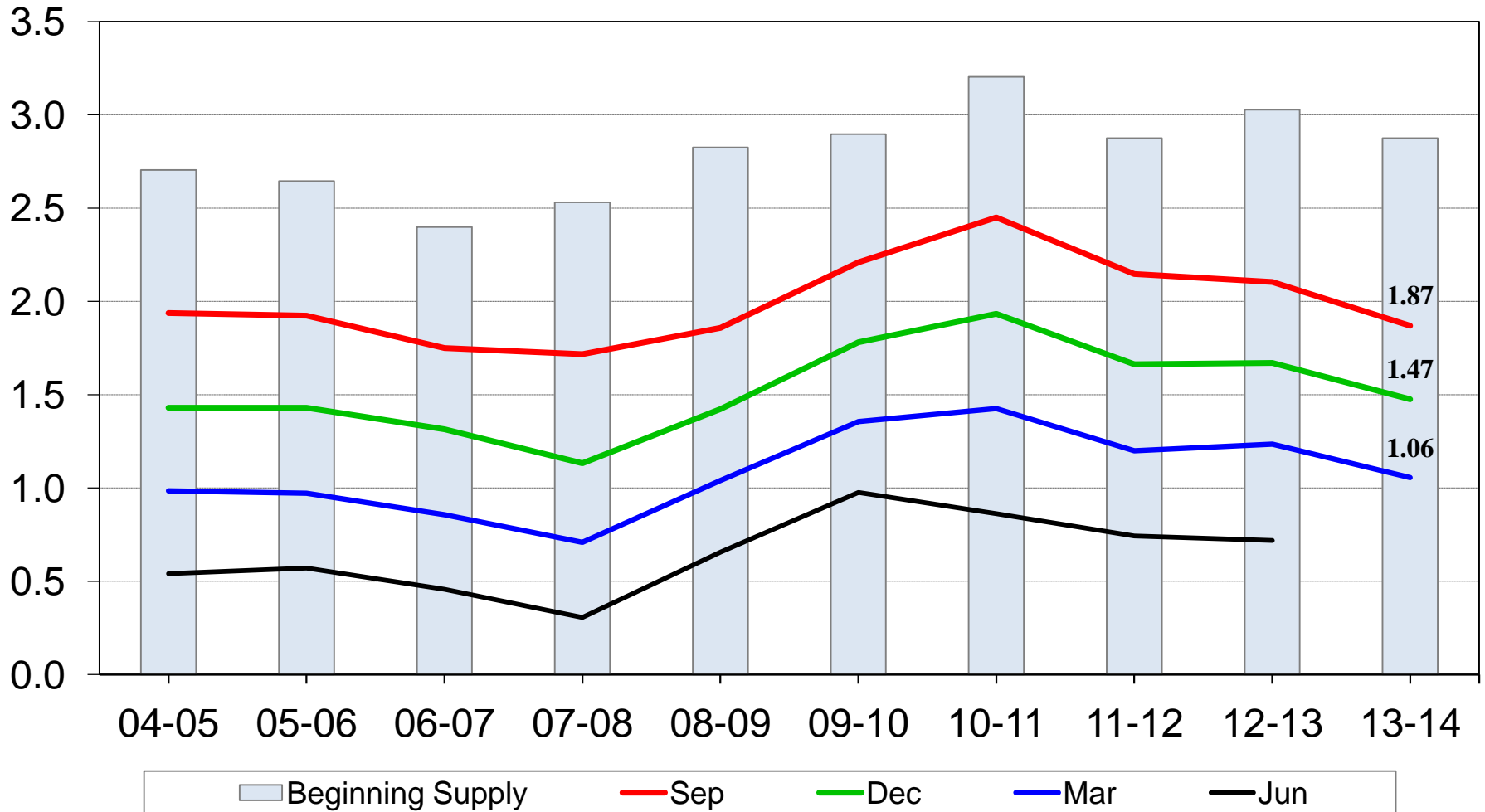




U.S. All Wheat Stocks



Billion bushels

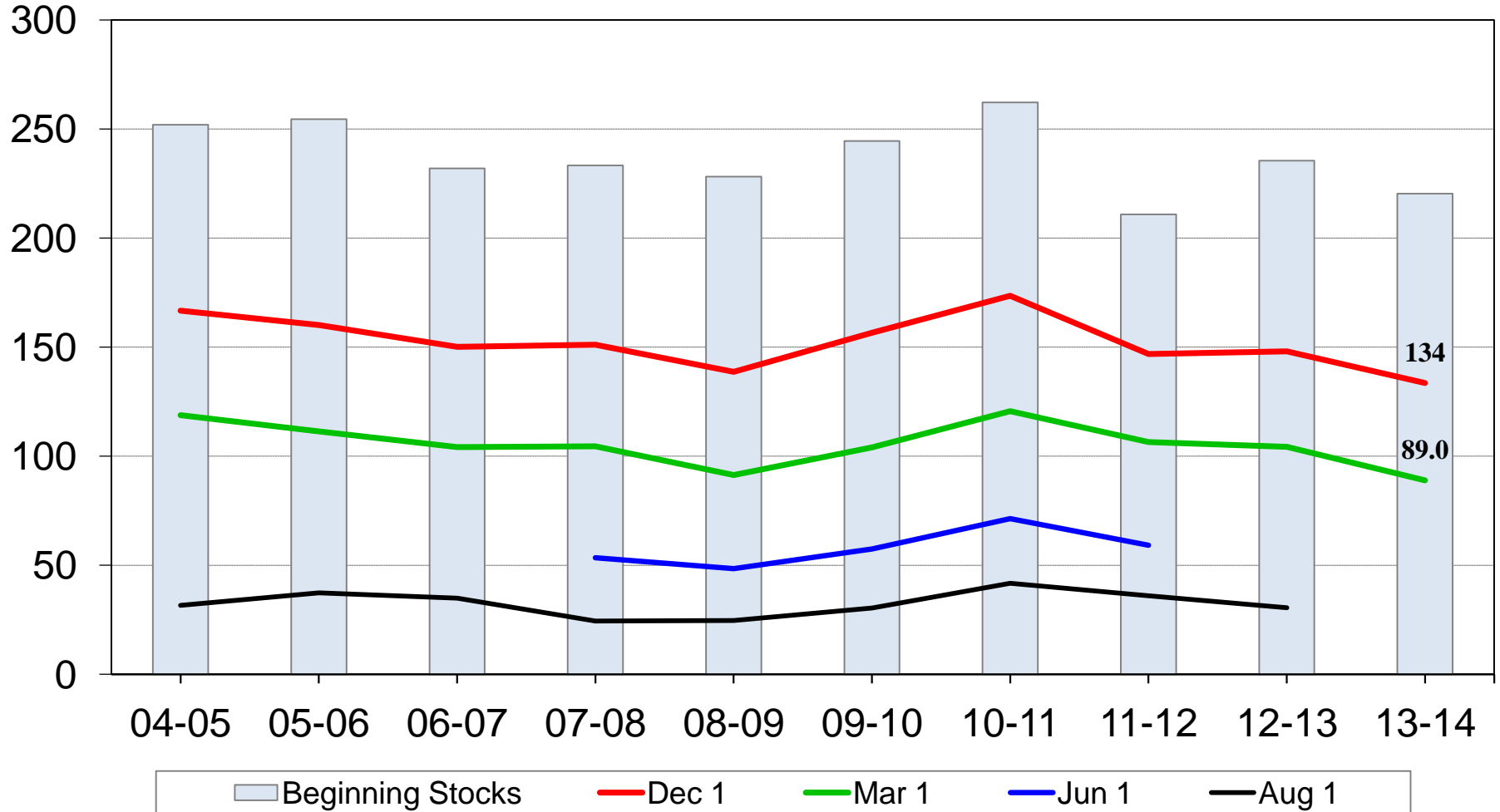




U.S. Rough Rice Stocks



Million cwt





United States Department of Agriculture
National Agricultural Statistics Service



Upcoming Reports

April 9	Crop Production
April 25	Cattle on Feed
April 30	Agricultural Prices
May 2	Census of Agriculture



United States Department of Agriculture
National Agricultural Statistics Service



All Reports Available At

www.nass.usda.gov

For Questions

202-720-2127

800-727-9540

nass@nass.usda.gov