



United States Department of Agriculture
National Agricultural Statistics Service



HOGS & PIGS INVENTORY

Executive Briefing

June 1, 2014

June Hogs and Pigs

Data Collection Period:

May 31 - June 17

Sample Size:

7,807

Collection Methods:

Phone, mail, internet, personal interview

Quarterly Data Items:

- Total Inventory: by class, weight group, and quarter
- Sows farrowing, pig crop, and pigs per litter

U.S. Hogs & Pigs Revisions

Initial Estimate Previous Revision Current Revision Net Revision Current Estimate

Jun 2013	All Hogs and Pigs	66.6 million	-1,559,000 -2.3%	+100,000 +0.2%	-1,459,000 -2.2%	65.2 million
	Pig Crop	30.1 million	-1,085,000 -3.6%	-105,000 -0.3%	-1,190,000 -4.0%	28.9 million
Sep 2013	Pig Crop	30.2 million	-223,000 -0.7%	-125,000 -0.4%	-348,000 -1.2%	29.9 million

U.S. Hogs & Pigs Revisions

Initial Estimate Previous Revision Current Revision Net Revision Current Estimate

Dec 2013	All Hogs and Pigs	65.9 million	+85,000 +0.1%	-1,250,000 -1.9%	-1,165,000 -1.8%	64.8 million
	Pig Crop	29.3 million		-1,045,000 -3.6%		28.3 million
Mar 2014	All Hogs and Pigs	62.9 million		-410,000 -0.7%		62.5 million



U.S. Hogs & Pigs Inventory

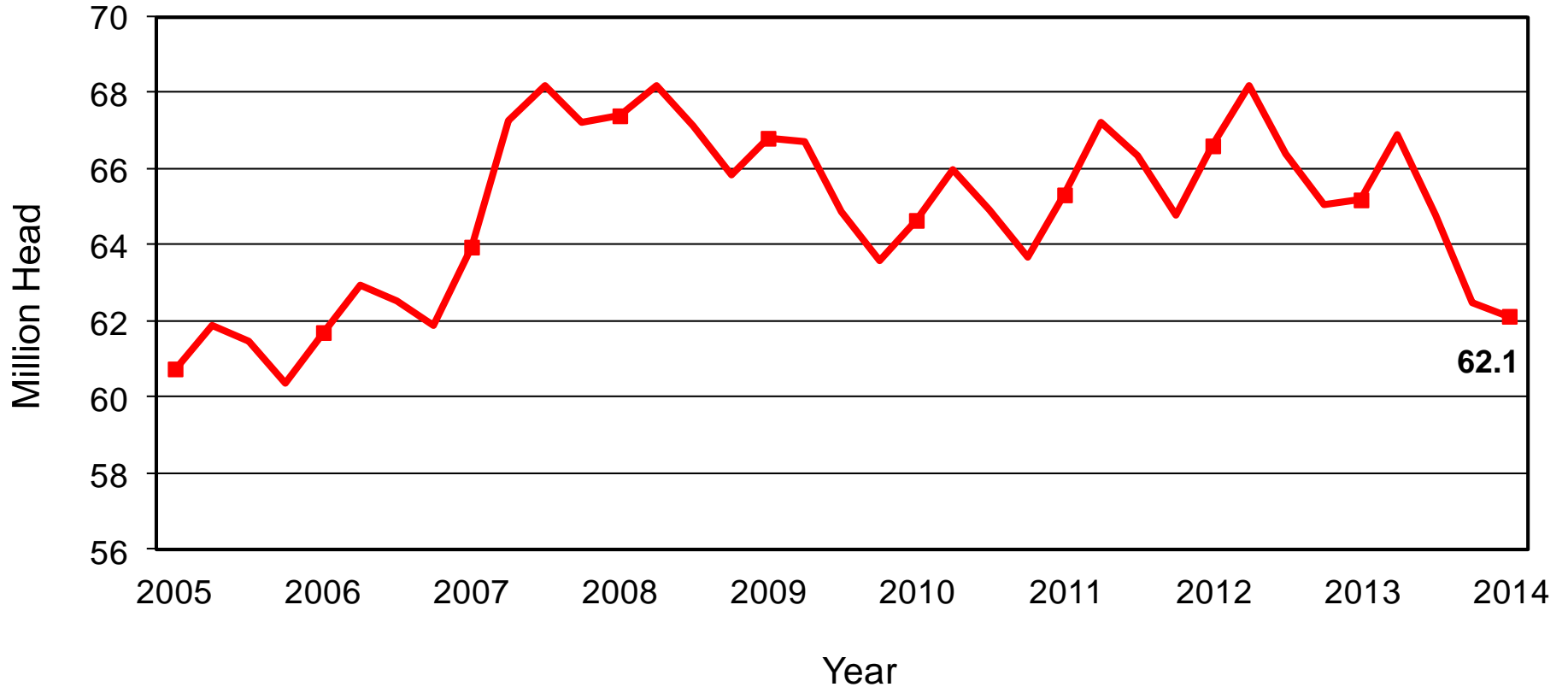
June 1, 2014



Inventory Items	(000) Hd	% PY
All Hogs & Pigs	62,128	95%
Breeding Hogs	5,855	100%
Market Hogs	56,273	95%
Mar – May Pig Crop	27,361	95%
Sows Farrowing	2,797	100%
Litter Rate	Number	% PY
Mar – May 2014	9.78	95%
Farrowing Intentions	(000) Hd	% PY
Jun – Aug 2014	2,893	100%
Sep – Nov 2014	2,880	104%



U.S. Quarterly Hogs and Pigs Inventory June 1, 2014

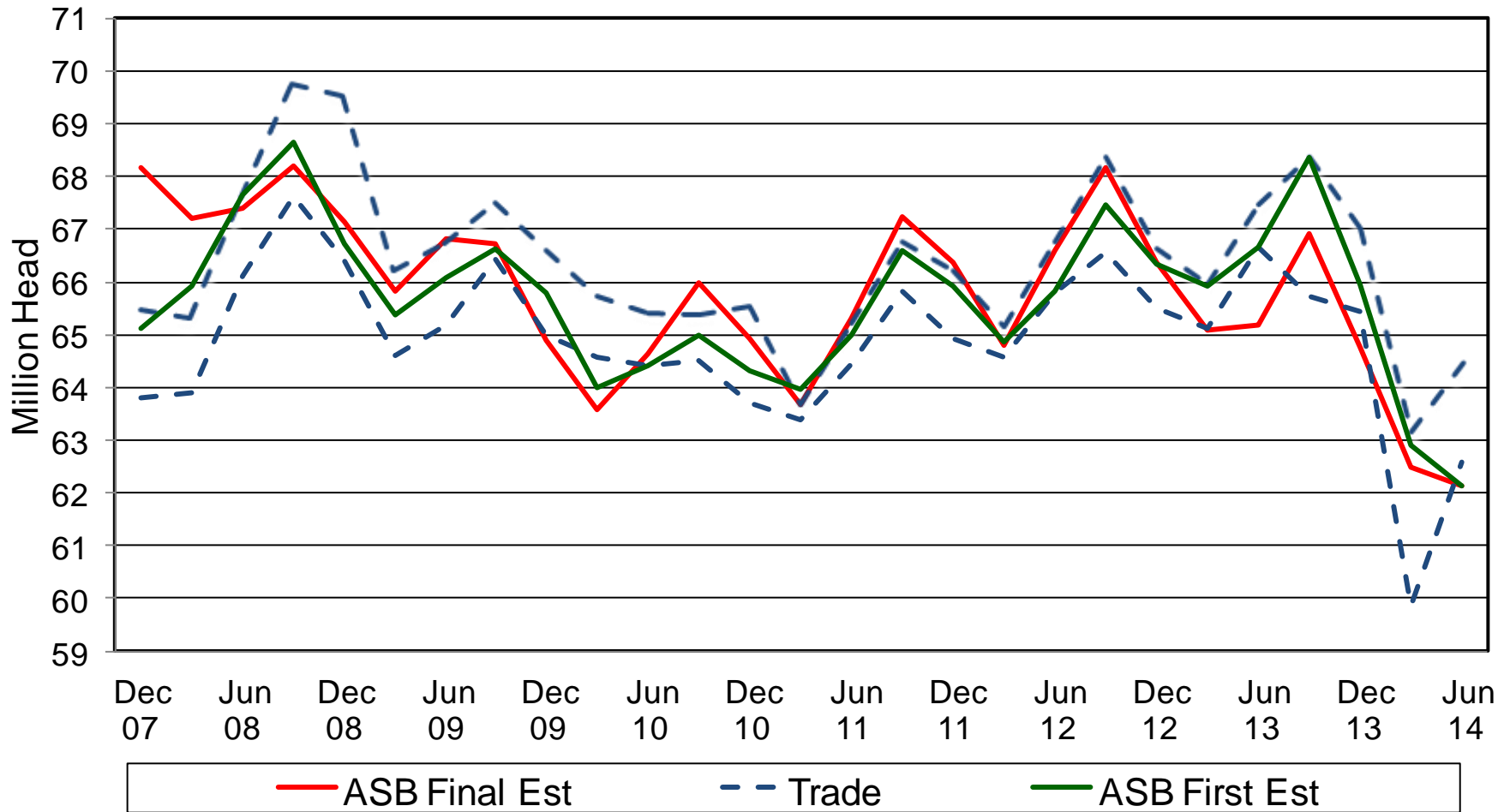


NASS Estimates Compared to Trade Expectations

Percent of Previous Year

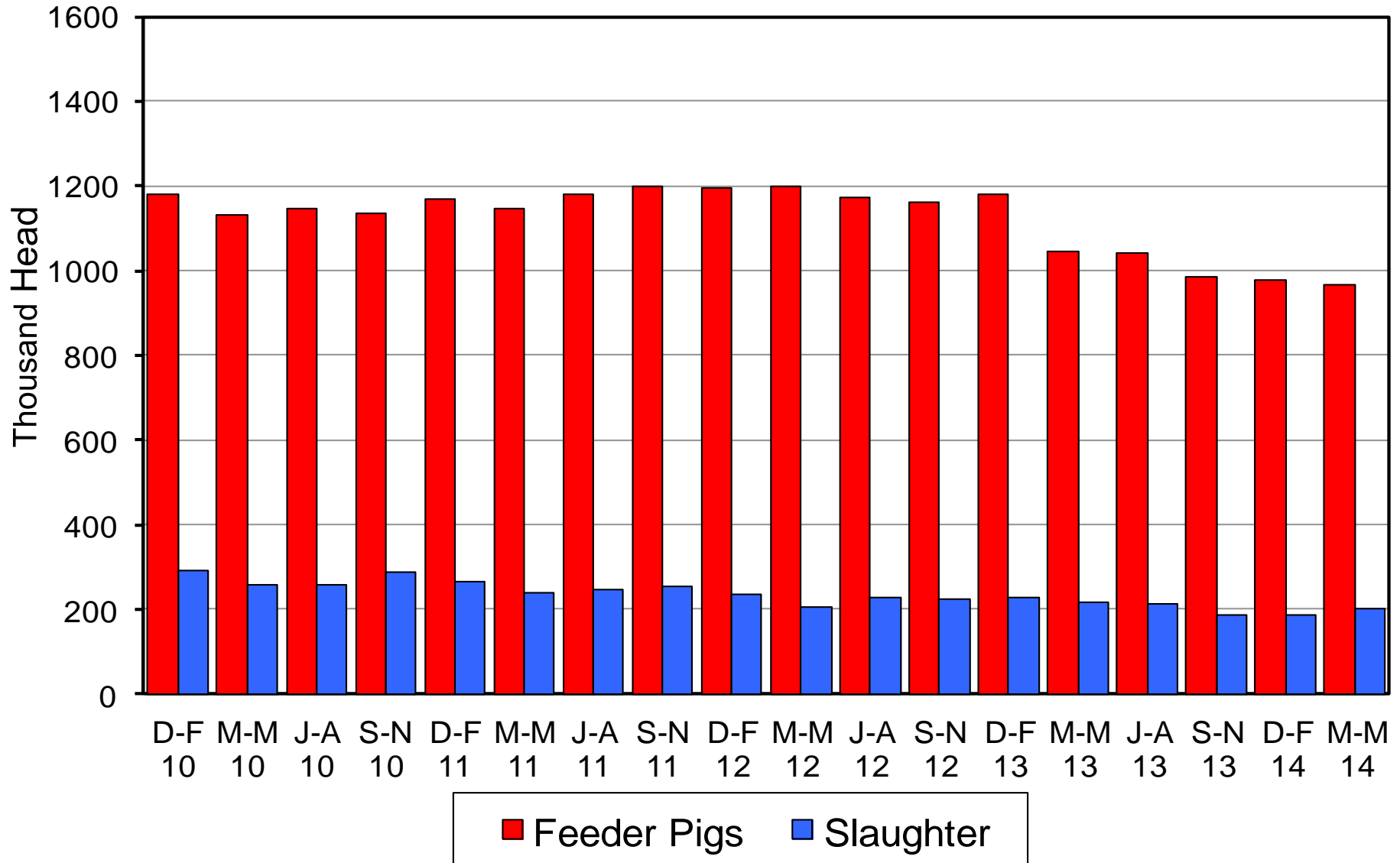
Inventory Items	NASS Estimate	Trade Average	Trade Range
All Hogs & Pigs	95.3%	97.0%	96.0% – 98.9%
Breeding Hogs	99.5%	101.6%	100.7% – 102.5%
Market Hogs	94.9%	96.6%	95.5% – 98.6%
Mar – May Pig Crop	94.6%	97.7%	95.7% – 99.9%
Farrowing Intentions			
Jun – Aug 2014	100.1%	102.1%	102.0% – 102.7%
Sep – Nov 2014	103.6%	102.6%	101.5% – 103.4%

All Hogs and Pigs Board vs Trade Expectations

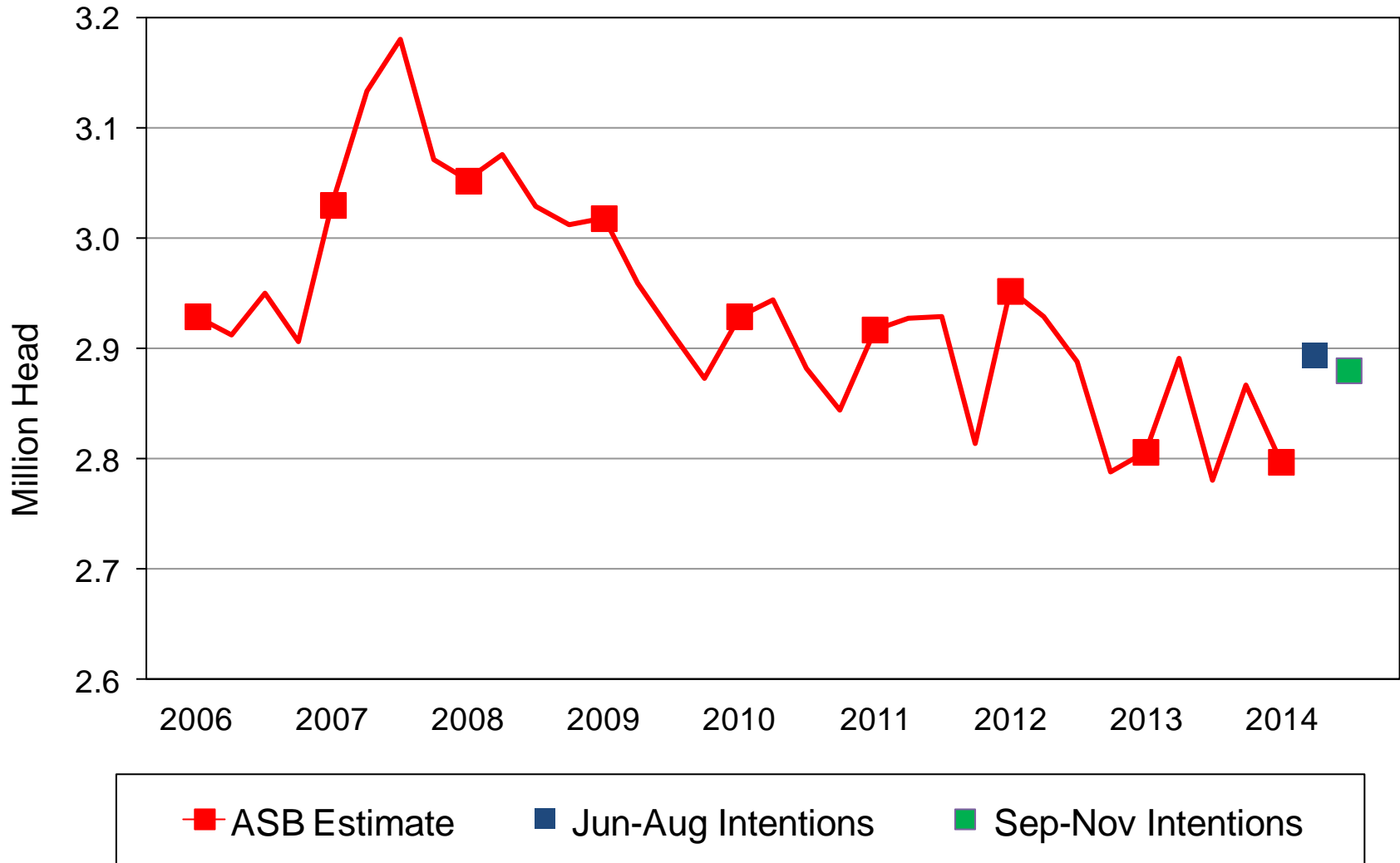


Canadian Imports by Quarter

Feeder Pigs and Slaughter Hogs



U.S. Quarterly Sows Farrowed March - May



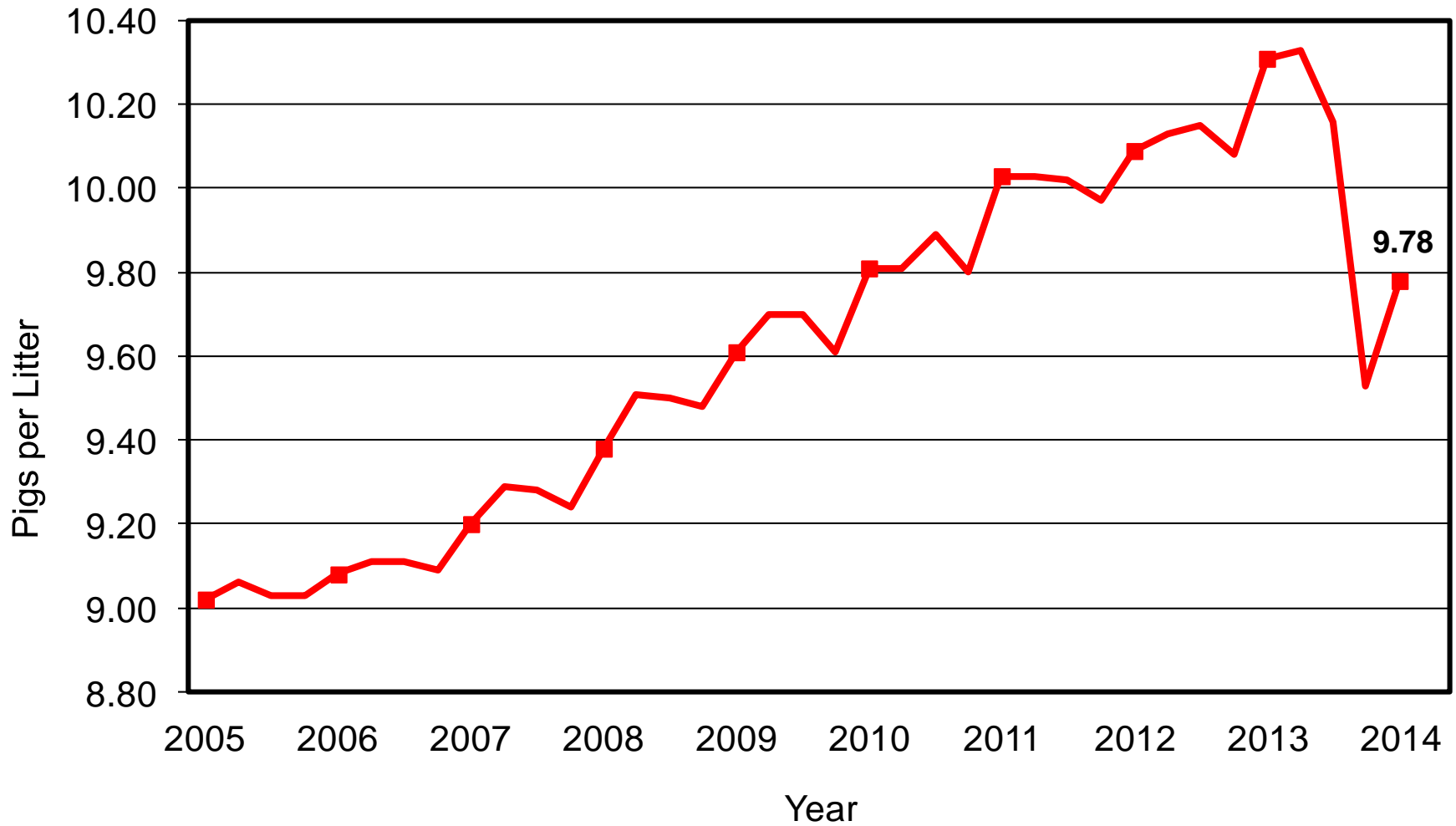


Breeding Herd Inventory Disposition & Utilization

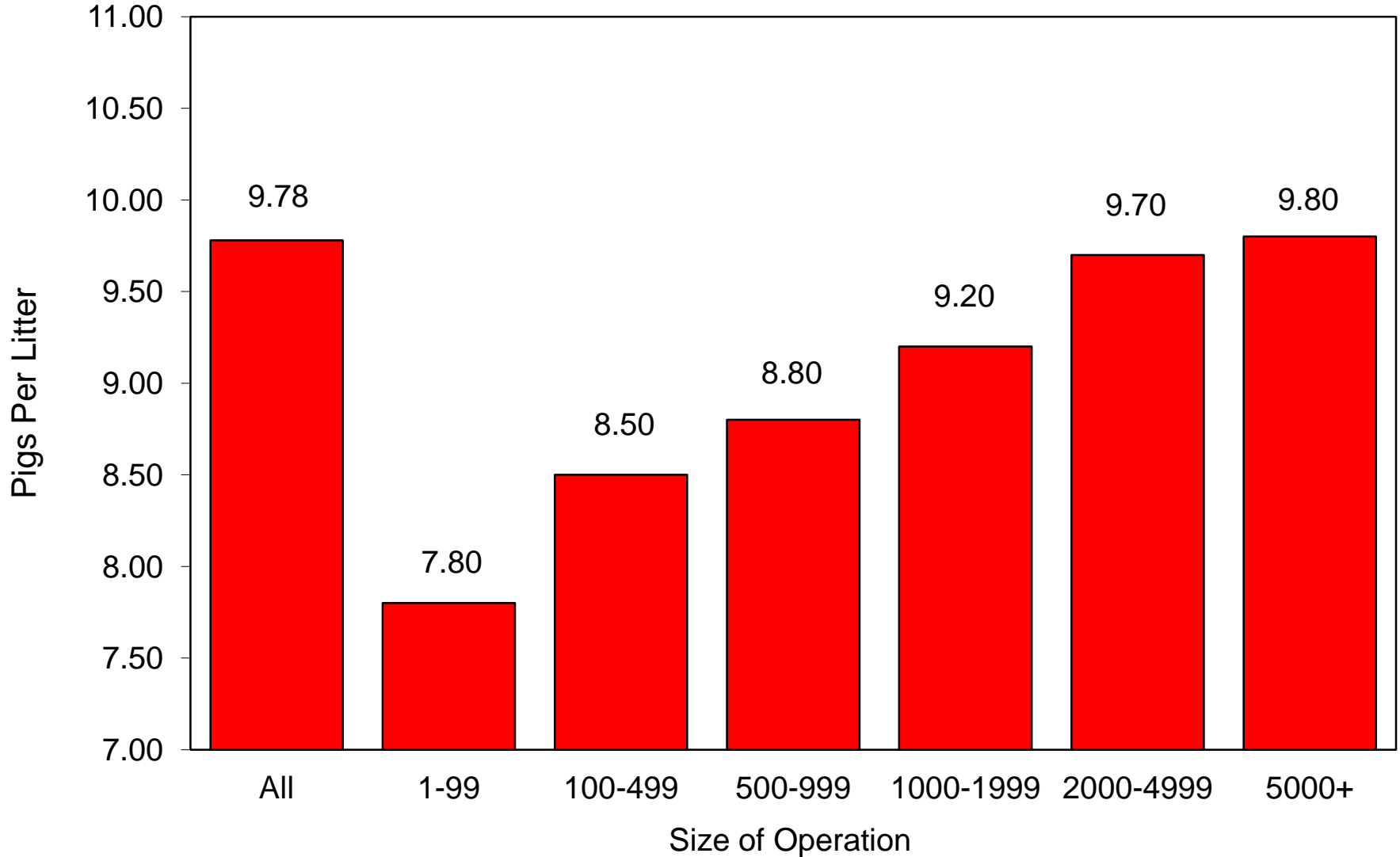


Year	Mar. 1 Estimate	Slaughter	Additions	Jun. 1 Estimate	Sow Utilization
	(000) Hd	(000) Hd	(000) Hd	(000) Hd	Percent
2005	5,952	854	890	5,988	48%
2006	6,045	889	924	6,080	48%
2007	6,149	955	975	6,169	49%
2008	6,200	1,023	954	6,131	49%
2009	5,992	876	852	5,968	50%
2010	5,760	847	875	5,788	51%
2011	5,788	826	841	5,803	50%
2012	5,820	813	855	5,862	51%
2013	5,836	848	896	5,884	48%
2014	5,851	776	780	5,855	48%

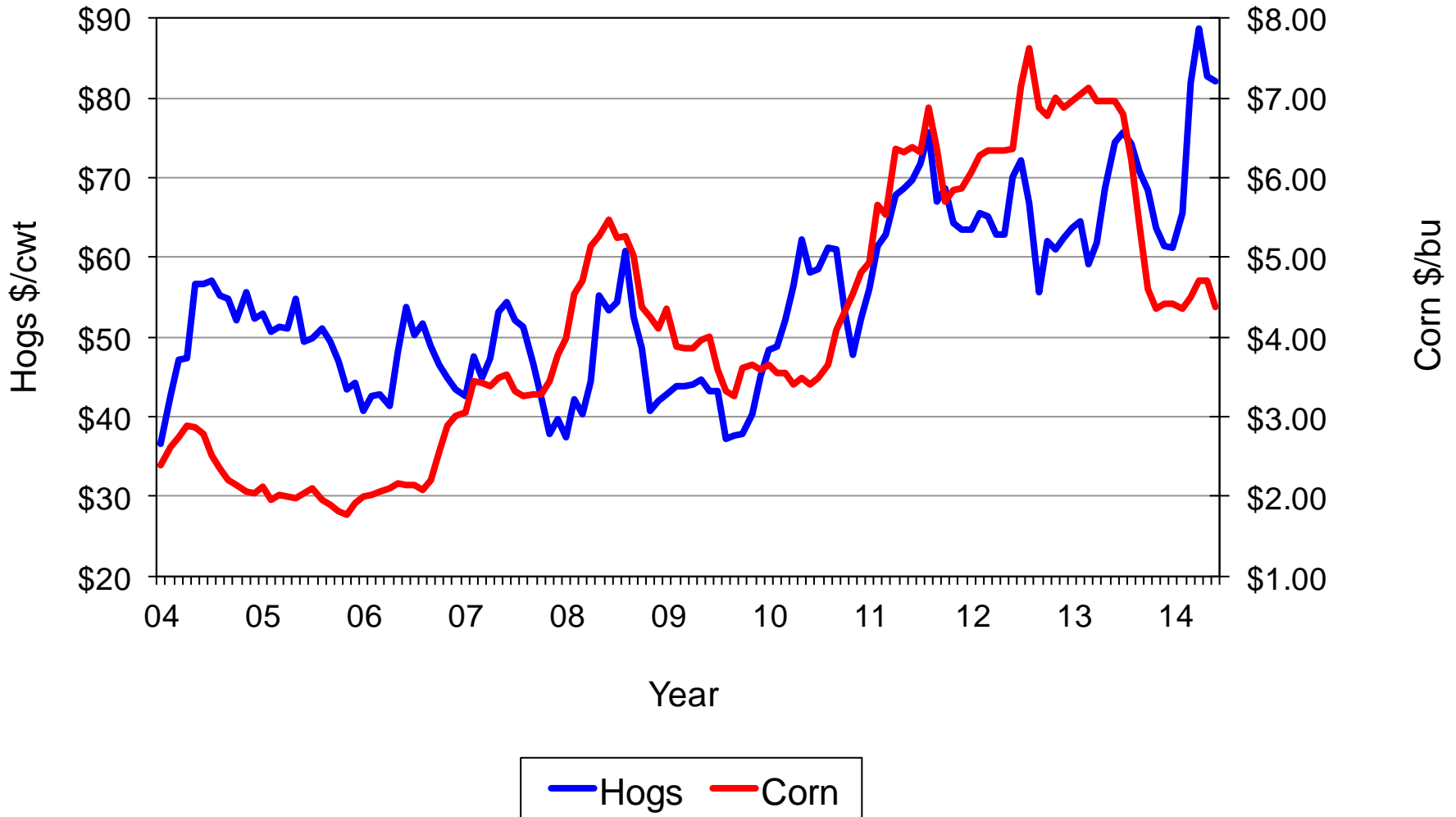
U.S. Quarterly Pigs per Litter March - May



U.S. Pigs per Litter by Size of Operation March-May 2014



U.S. Prices Received by Farmers for Hogs & Corn





United States Department of Agriculture
National Agricultural Statistics Service



Upcoming Reports

July 11	Crop Production
July 18	Milk Production
July 25	Cattle on Feed
July 31	Agricultural Prices
Sept 4	2008-2012 Livestock Final Estimates



United States Department of Agriculture
National Agricultural Statistics Service



All Reports Available At
www.nass.usda.gov

For Questions Call or Email

202-720-3570

800-727-9540

nass@nass.usda.gov