



United States Department of Agriculture
National Agricultural Statistics Service



AUGUST CROP PRODUCTION

Executive Summary

August 12, 2014

12:00pm



Contents



Field Crops	Fruit	Specialty Crops
Corn	Peaches	Dry Beans
Soybeans	Apples	Tobacco
Cotton	Pears	Sugarbeets
Wheat	Grapes	Sugarcane
Oats		Hops
Barley		Coffee
Sorghum		Summer Potatoes
Alfalfa & Other Hay		
Rice		
Peanuts		



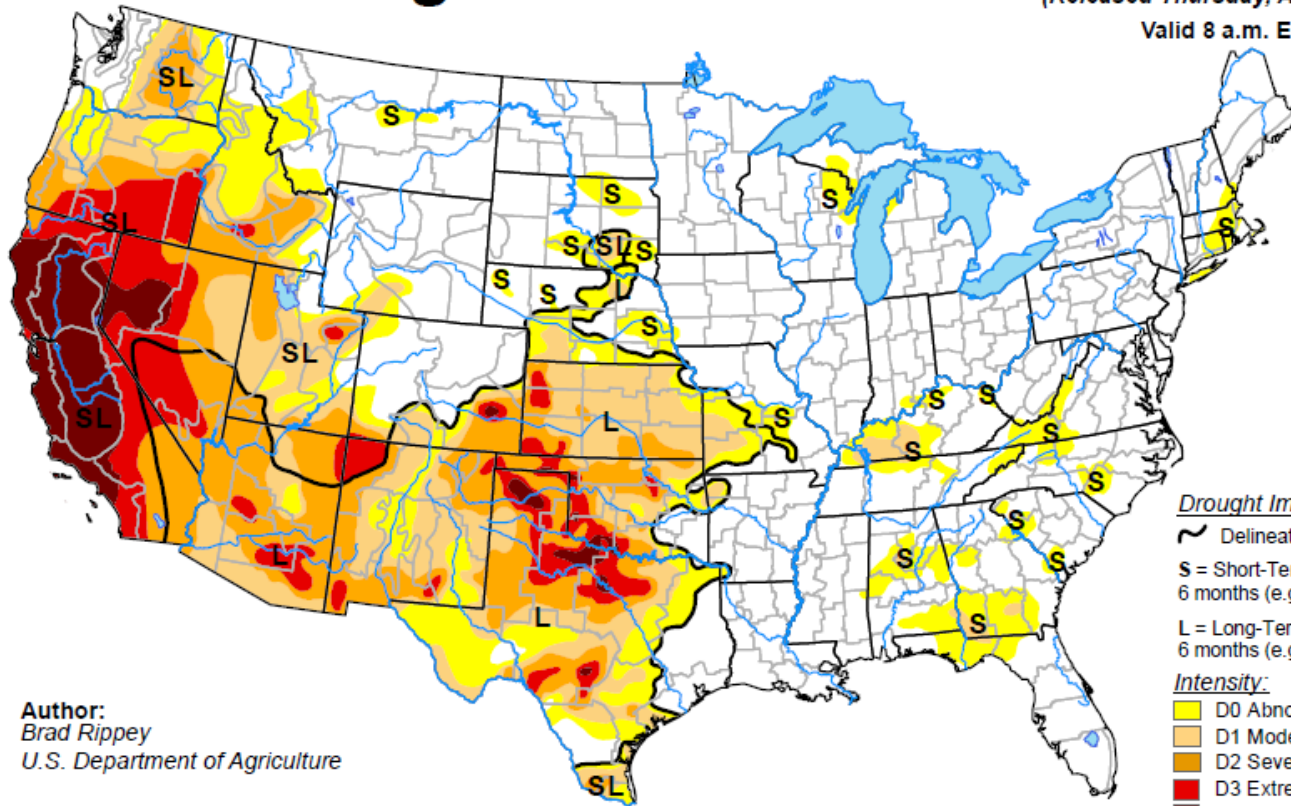
Survey Overview



	Ag Yield	Objective Yield
Survey Type	Farmer Reported	Field Measurement
Crops Included	Field Crops	Corn, Soybeans, Cotton, and Winter Wheat
Sample Size	24,779	4,504
Collection Period	Jul 30 – Aug 6	Jul 25 – Aug 1

U.S. Drought Monitor

August 5, 2014
 (Released Thursday, Aug. 7, 2014)
 Valid 8 a.m. EDT



Author:
 Brad Rippey
 U.S. Department of Agriculture

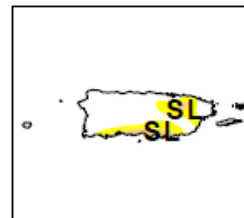
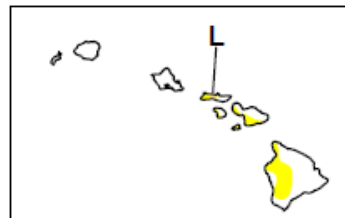
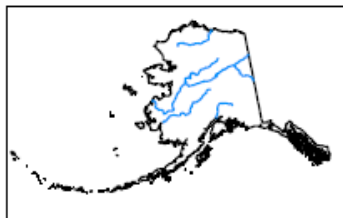
Drought Impact Types:

- ~ Delineates dominant impacts
- S = Short-Term, typically less than 6 months (e.g. agriculture, grasslands)
- L = Long-Term, typically greater than 6 months (e.g. hydrology, ecology)

Intensity:

- D0 Abnormally Dry
- D1 Moderate Drought
- D2 Severe Drought
- D3 Extreme Drought
- D4 Exceptional Drought

The Drought Monitor focuses on broad-scale conditions. Local conditions may vary. See accompanying text summary for forecast statements.



<http://droughtmonitor.unl.edu/>



August 2014 Crop Production

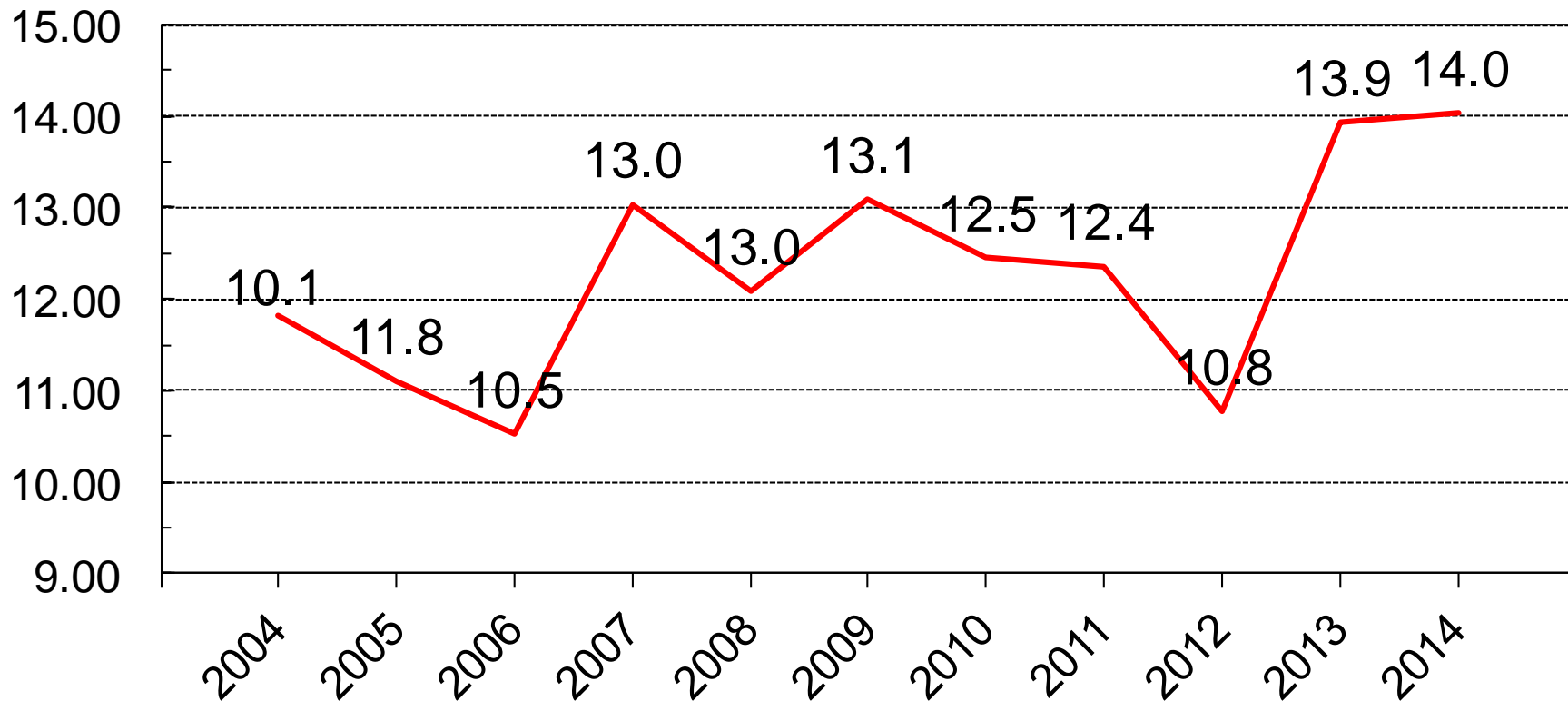


Crop	Unit	August 2014	% Change from Previous Forecast	% Change from Previous Season
Corn				
Planted	Mil Ac	91.6	NC	-3.9
Harvested	Mil Ac	83.8	NC	-4.4
Yield	Bu/Ac	167.4	---	+5.4
Production	Bil Bu	14.0	---	+0.8



U.S. Corn Production

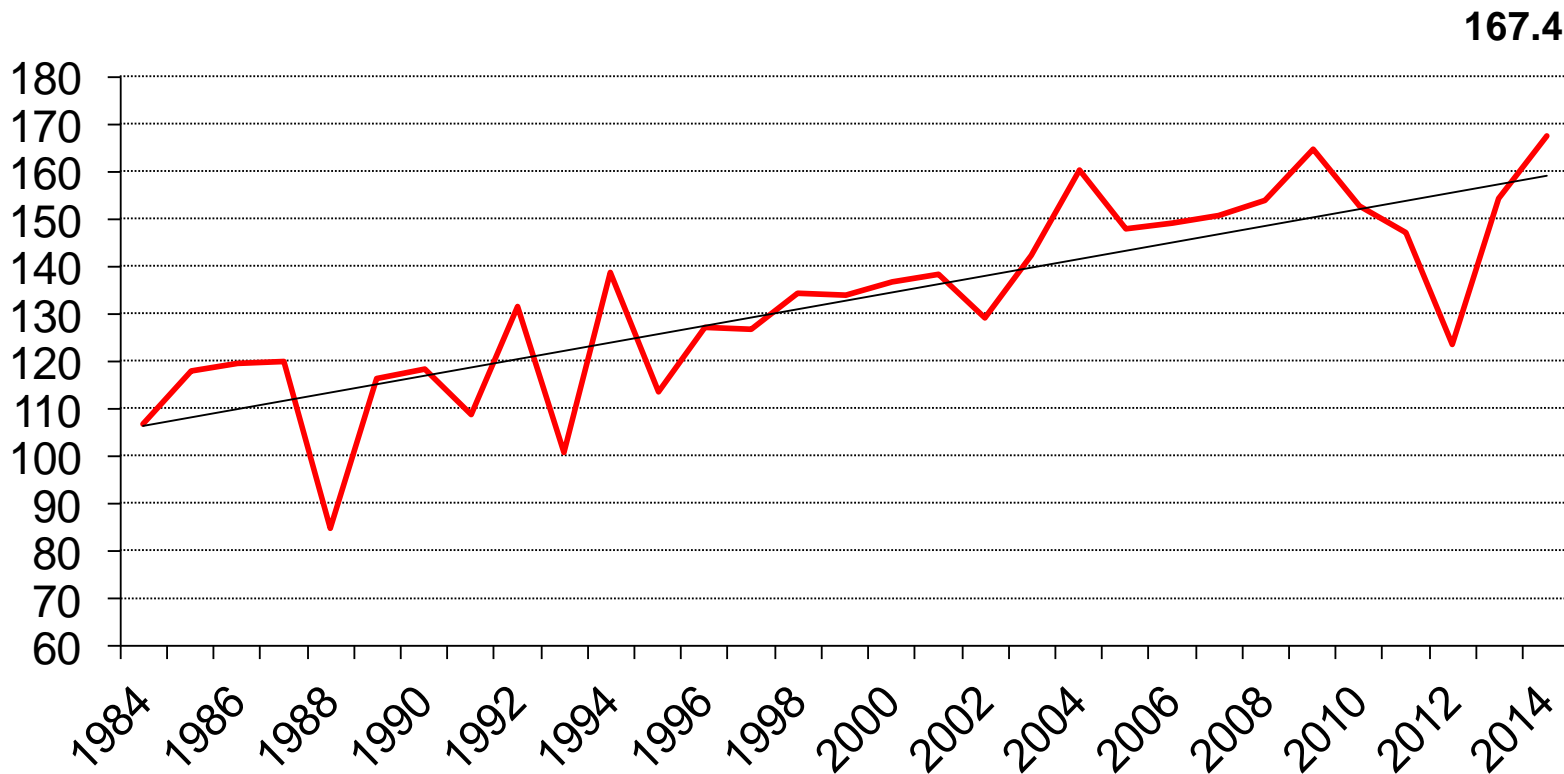
Billion Bushels





U.S. Corn Yield

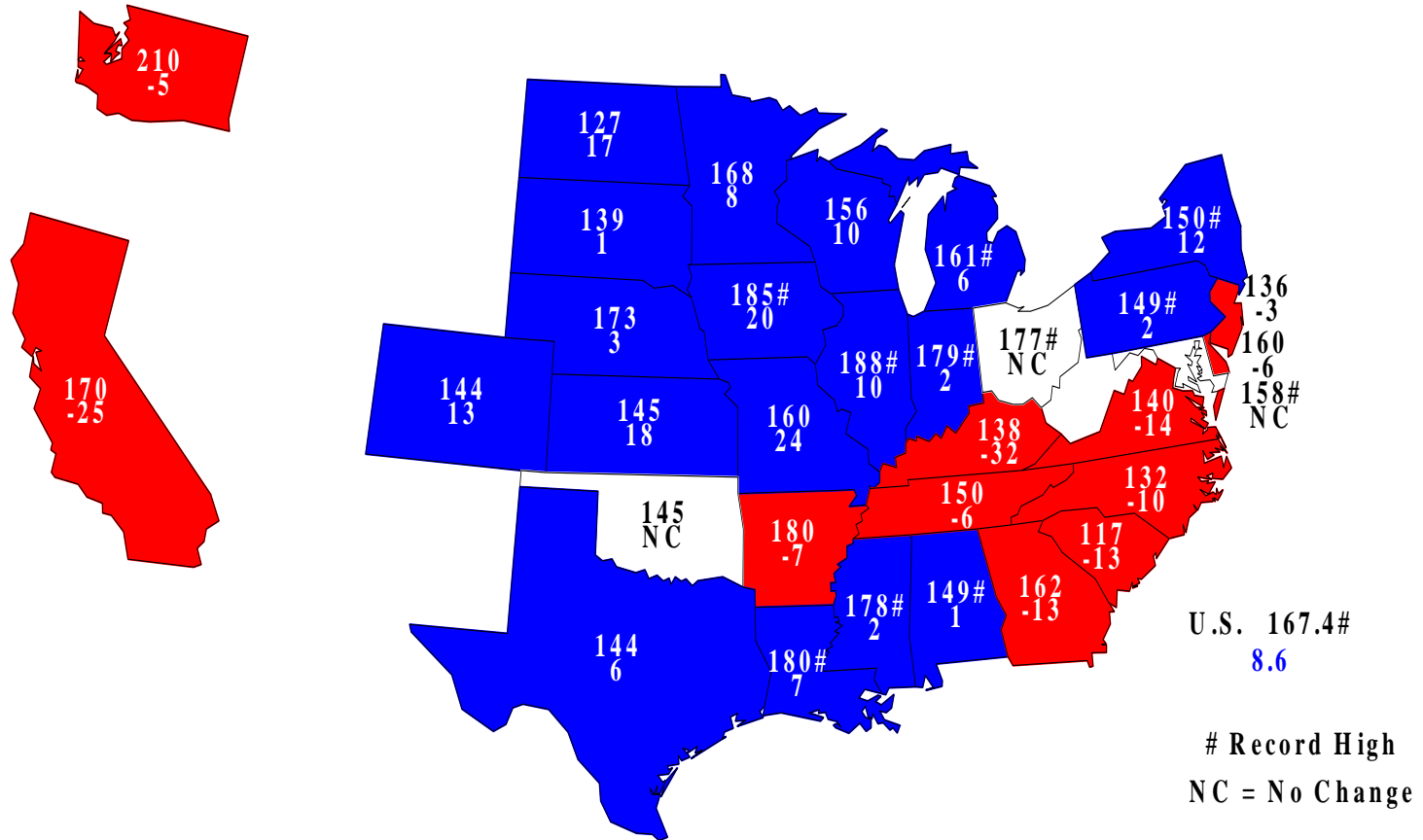
Bushels/Acre





Corn for Grain Yields, August 1, 2014

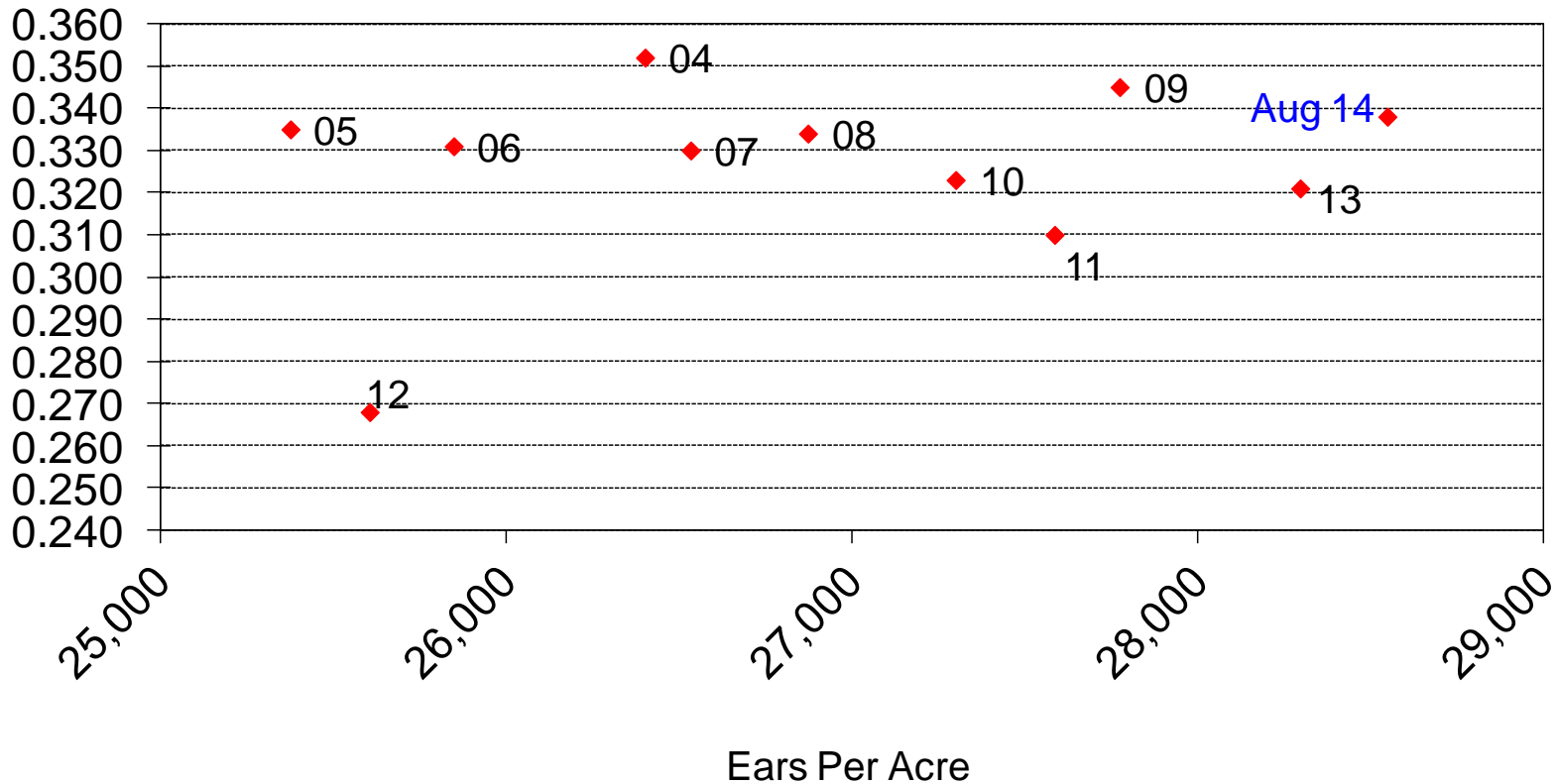
Bushels and Change From Previous Year





Corn Objective Yield Region Derived Grain Weight vs Ears per Acre

Lbs/Ear





August 2014 Crop Production



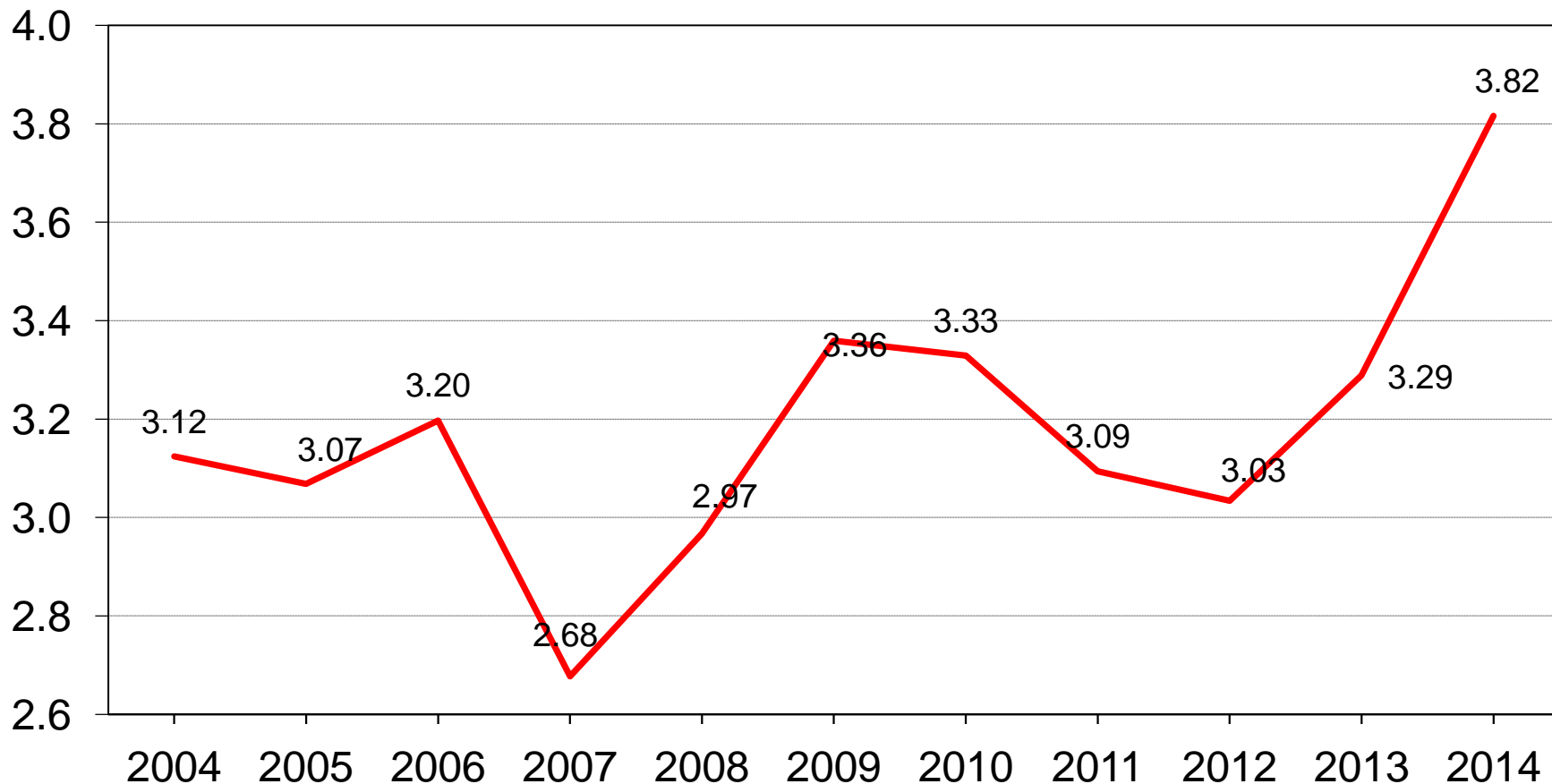
Crop	Unit	August 2014	% Change from Previous Forecast	% Change from Previous Season
Soybeans				
Planted	Mil Ac	84.8	NC	+10.9
Harvested	Mil Ac	84.1	NC	+10.8
Yield	Bu/Ac	45.4	---	+4.8
Production	Bil Bu	3.82	---	+16.0



U.S. Soybean Production



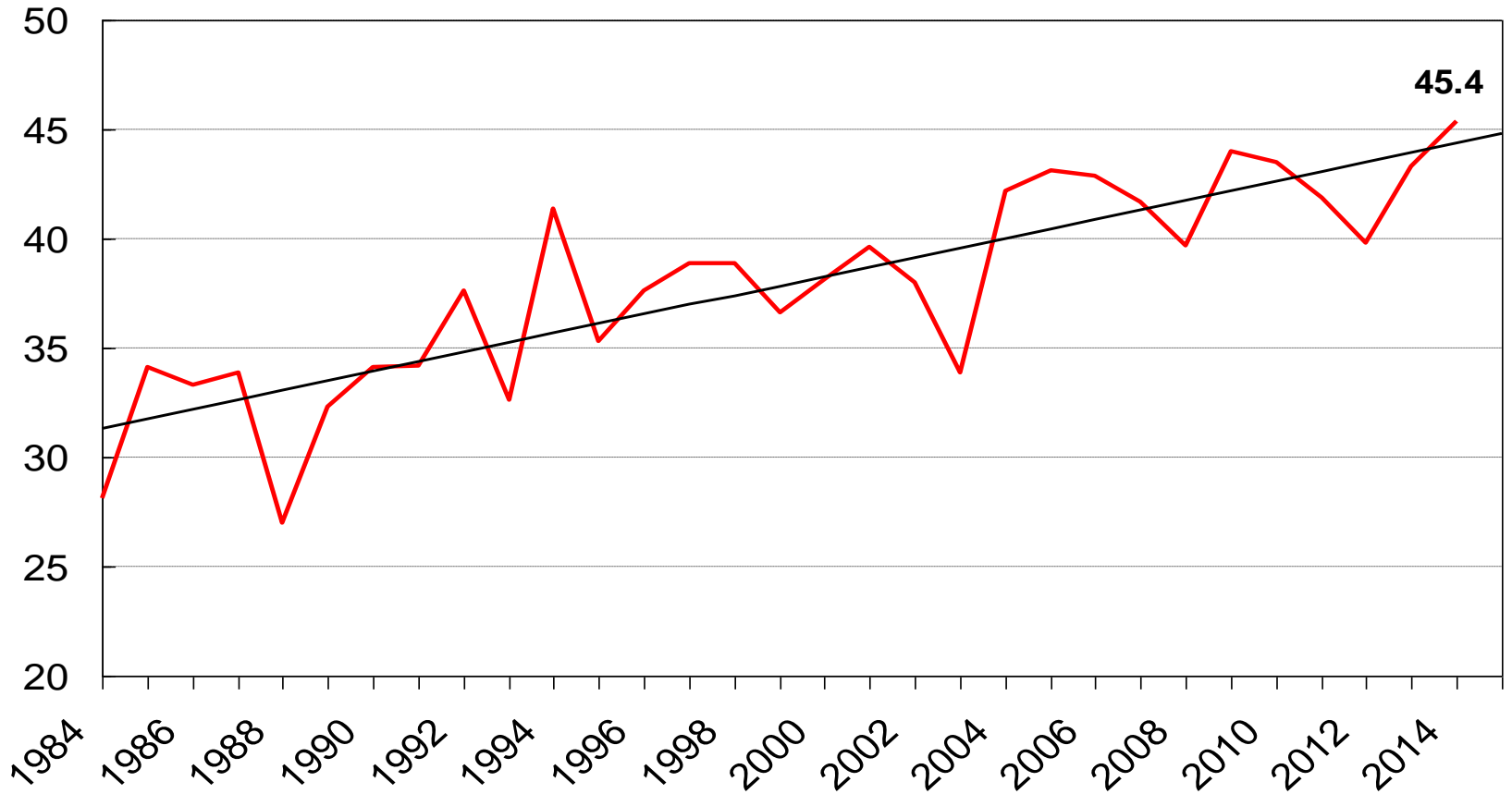
Billion bushels





U.S. Soybean Yield

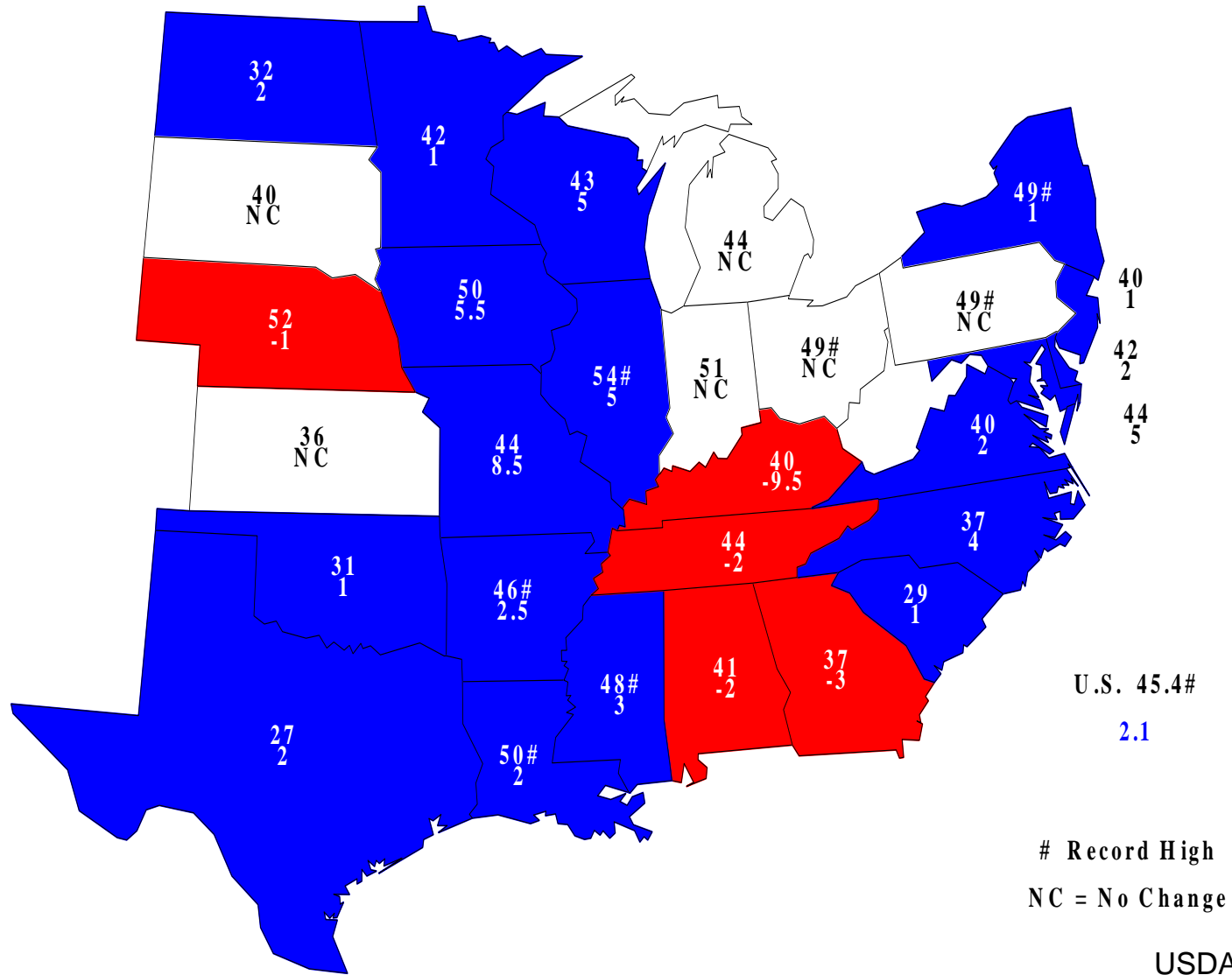
Bushels/Acre





Soybean Yields, August 1, 2014

Bushels and Change From Previous Year





August 2014 Crop Production

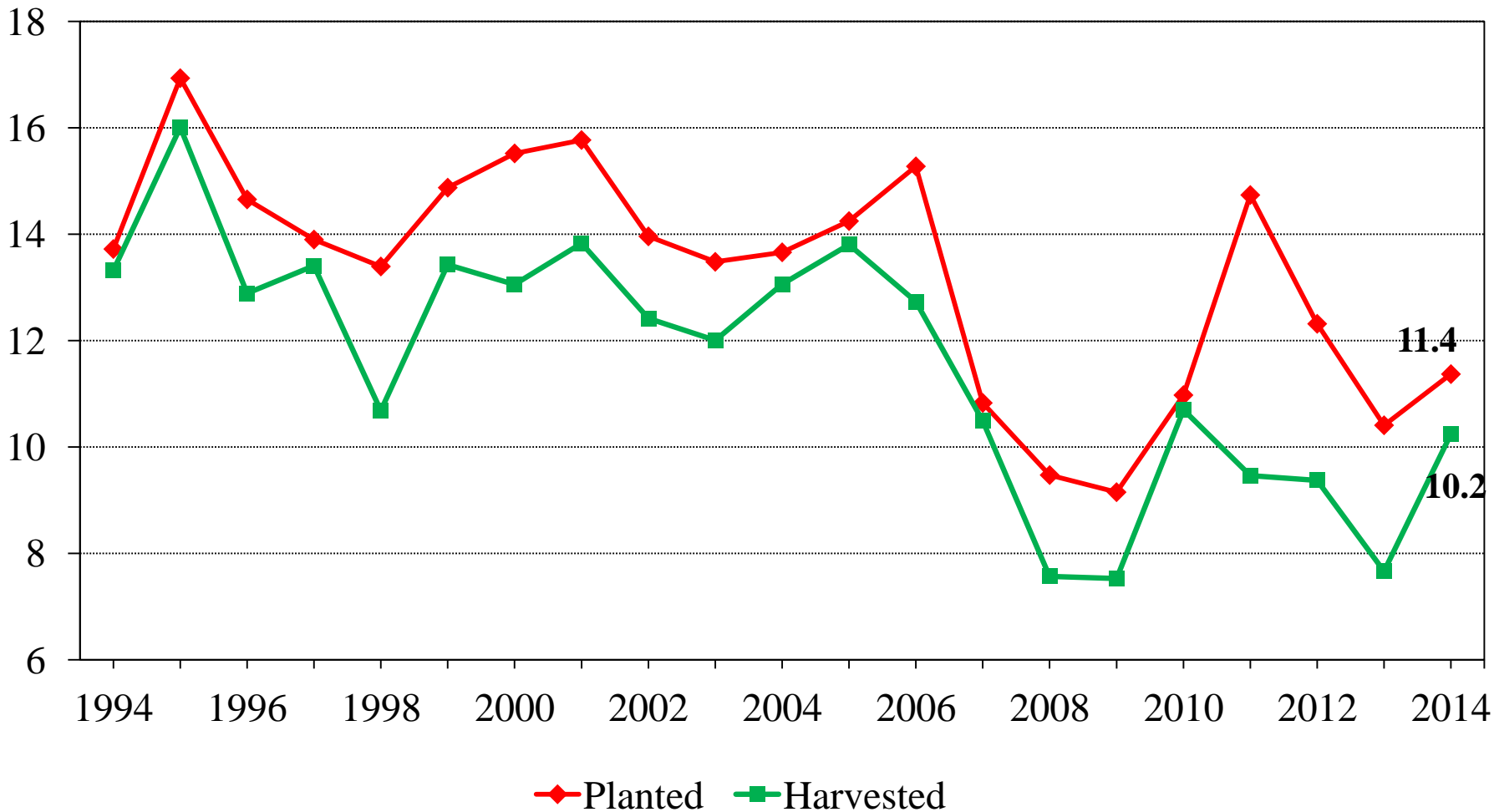


Crop	Unit	August 2014	% Change from Previous Forecast	% Change from Previous Season
Upland Cotton				
Planted	Mil Ac	11.2	NC	+9.7
Harvested	Mil Ac	10.1	---	+37.0
Yield	Lbs/Ac	808	---	+0.7
Production	Mil Bales	16.9	---	+38.1



U.S. All Cotton Acres

Million acres

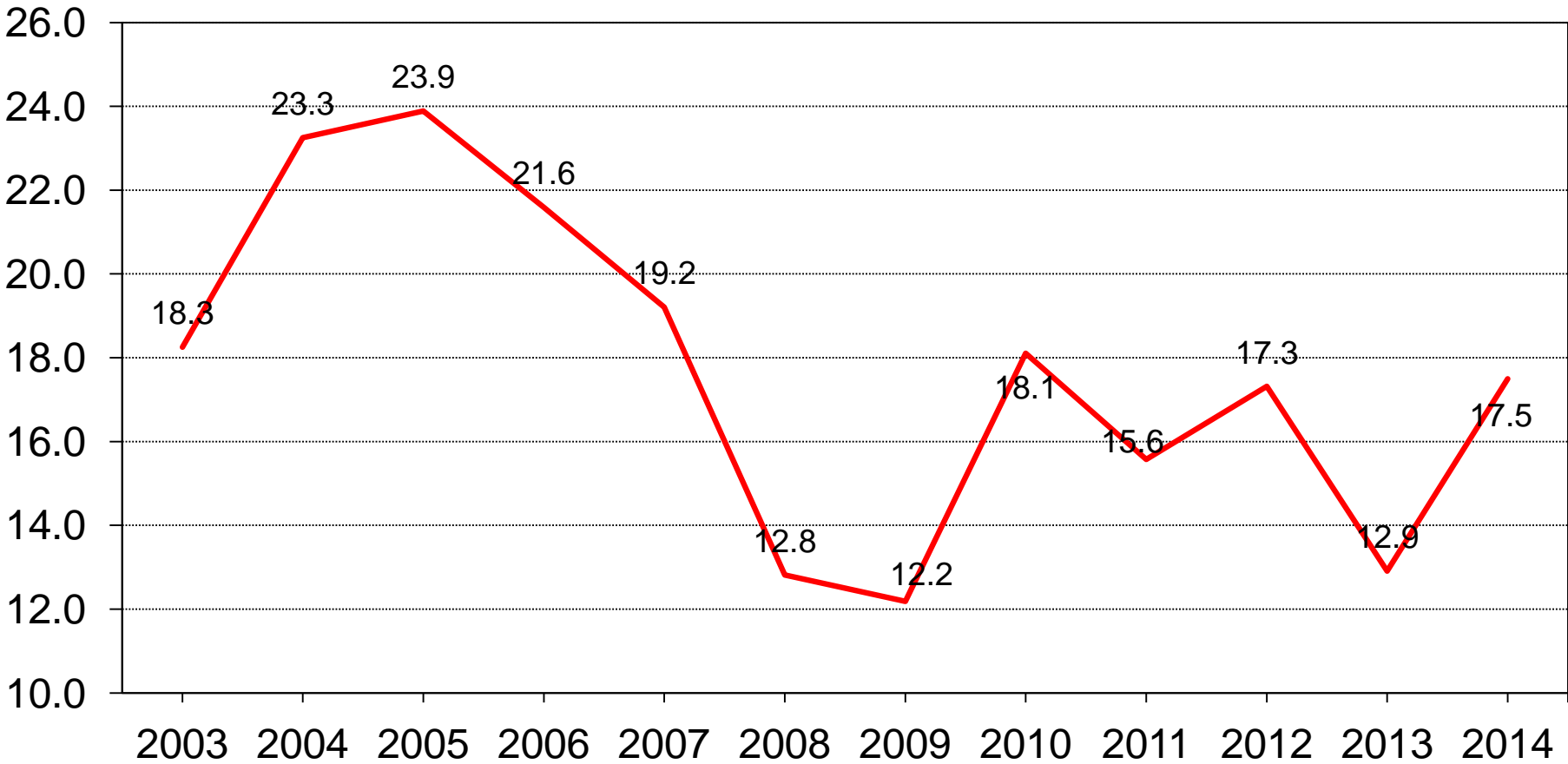




U.S. All Cotton Production



Million bales

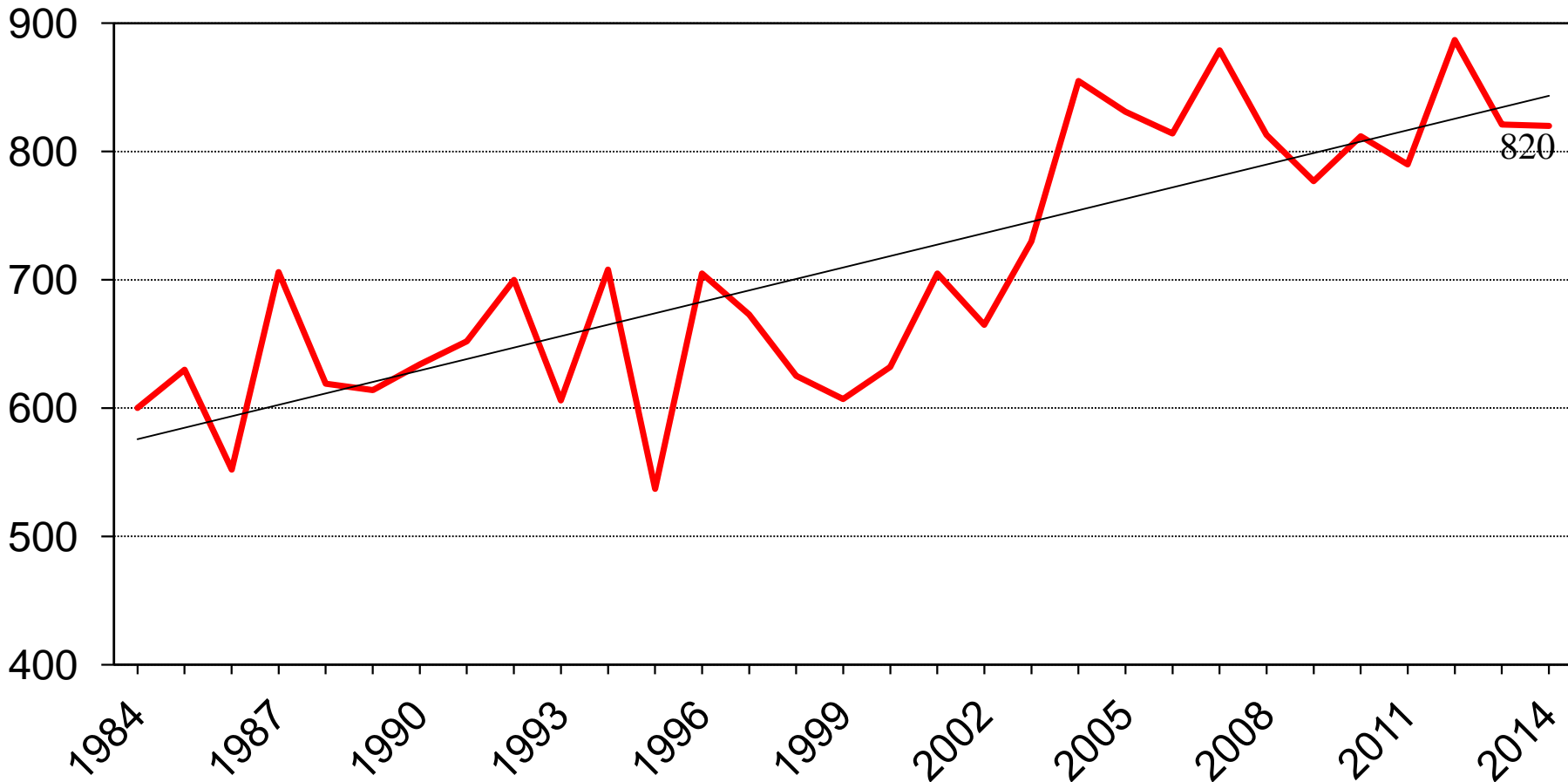




U.S. All Cotton Yield



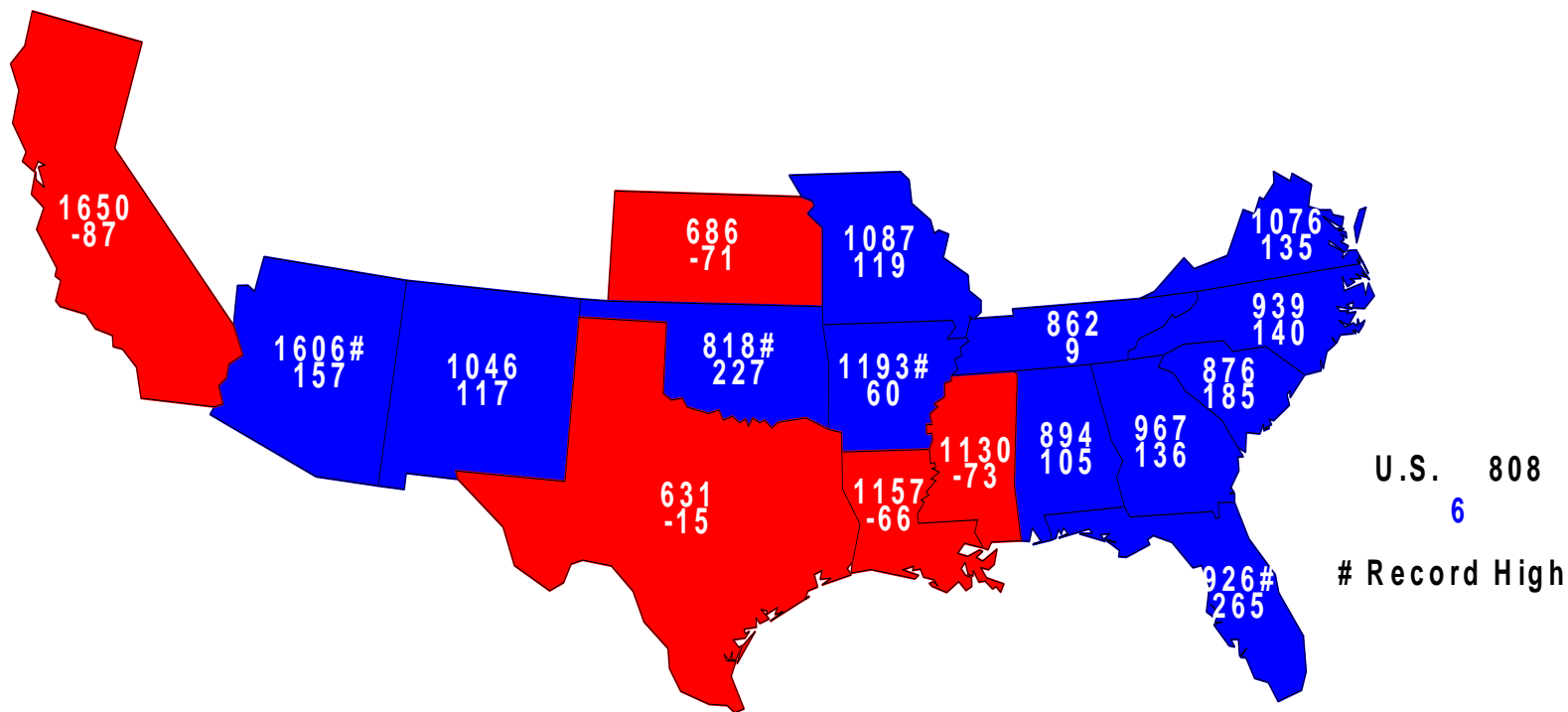
Pounds/acre





Upland Cotton Yield, August 1, 2014

Pounds and Change From Previous Year





August 2014 Crop Production

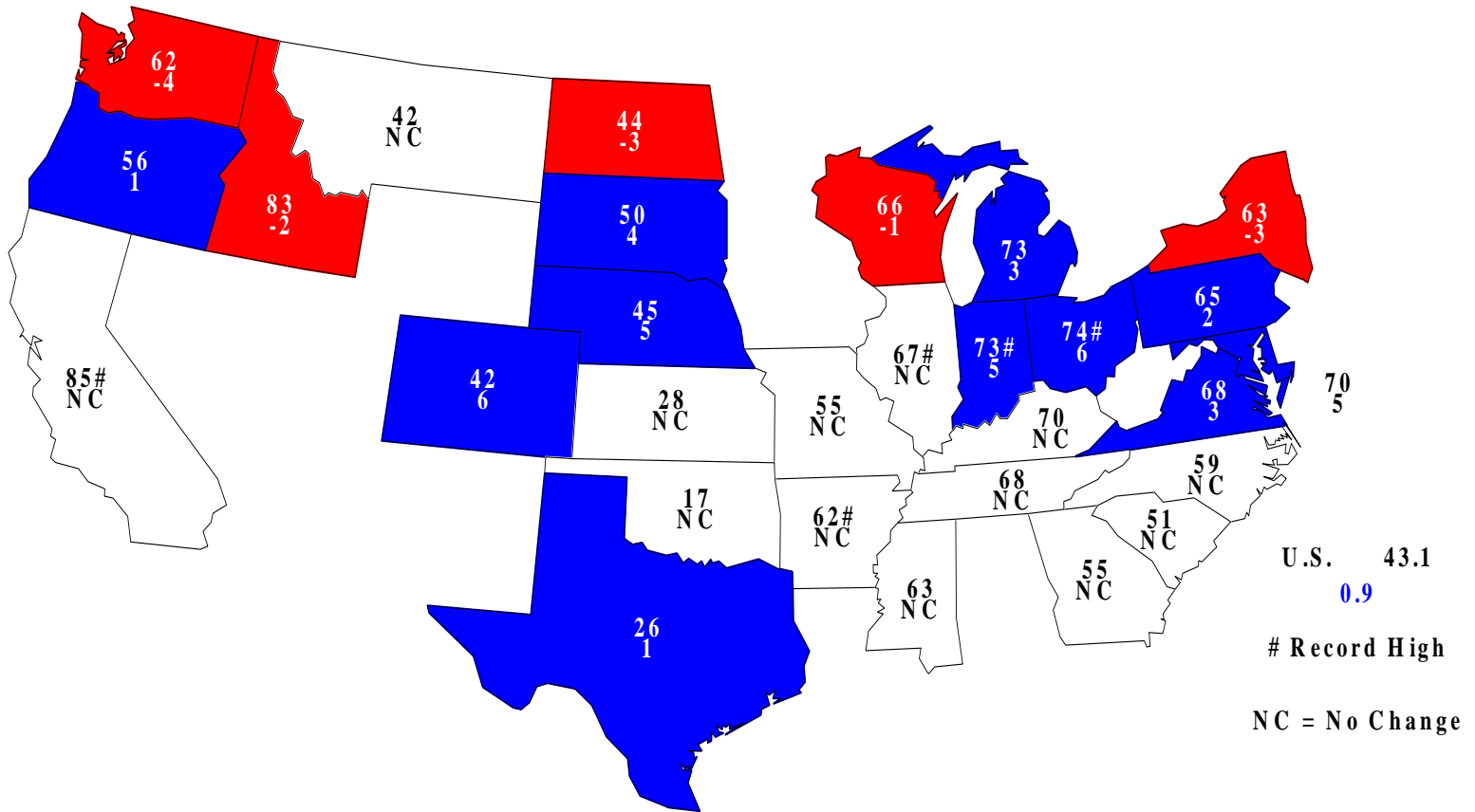


Crop	Unit	August 2014	% Change from Previous Forecast	% Change from Previous Season
Winter Wheat				
Harvested	Mil Ac	32.4	NC	+ <0.1
Yield	Bu/Ac	43.1	+2.1	-9.1
Production	Bil Bu	1.40	+2.1	-9.0
Other Spring				
Harvested	Mil Ac	12.4	NC	+9.4
Yield	Bu/Ac	46.1	+1.3	-2.1
Production	Mil Bu	572	+1.4	+7.3
Durum				
Harvested	Mil Ac	1.42	NC	-0.2
Yield	Bu/Ac	42.7	+1.4	-2.1
Production	Mil Bu	60.5	+1.5	-2.3
All Wheat				
Production	Bil Bu	2.03	+1.9	-4.7



Winter Wheat Yield - August 1, 2014

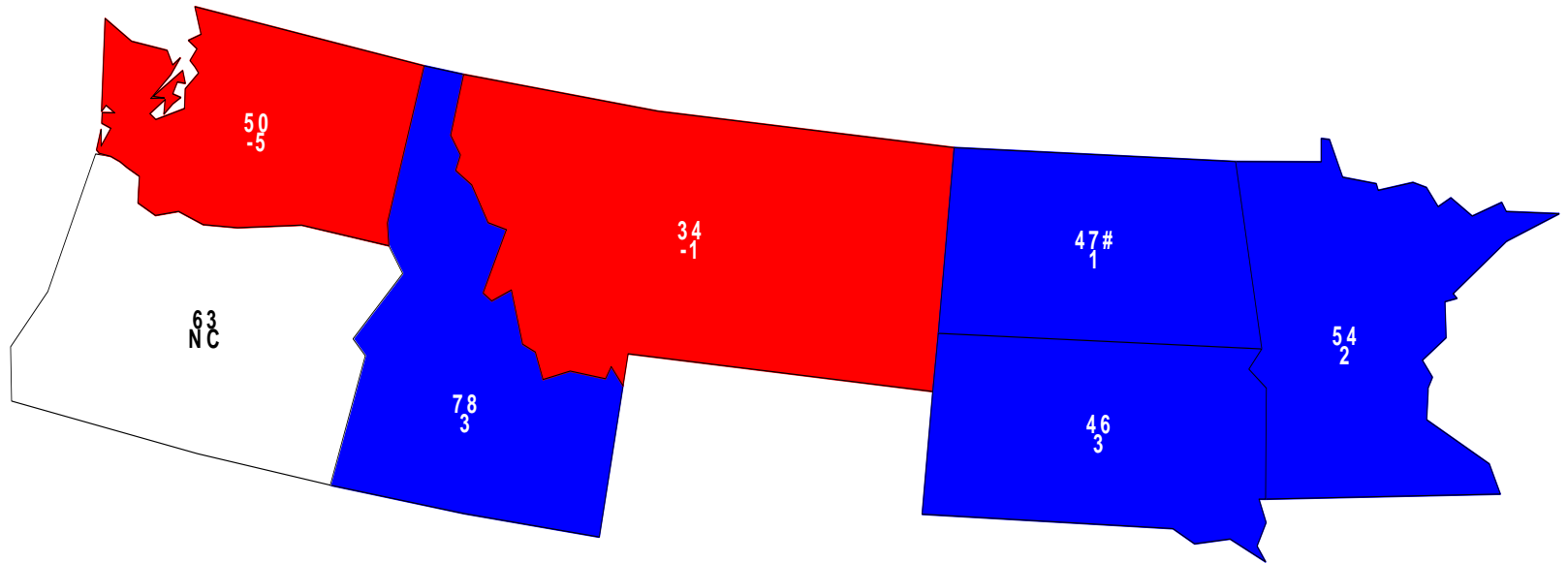
Bushels and Change From Previous Month





Other Spring Wheat Yield - August 1, 2014

Bushels and Change From Previous Month



U.S. 46.1
0.6

Record High

NC = No Change



August 2014 Crop Production



Crop	Unit	August 2014	% Change from Previous Forecast	% Change from Previous Season
Oats	Mil Bu	77.3	+2.3	+17.3
Barley	Mil Bu	193	+2.8	-10.4
Sorghum	Mil Bu	429	---	+10.3
Alfalfa Hay	Mil Tons	63.6	---	+10.5
Other Hay	Mil Tons	77.2	---	-1.5
Rice	Mil Cwt	229	---	+20.5



August 2014 Crop Production



Crop	Unit	August 2014	% Change from Previous Forecast	% Change from Previous Season
Peanuts	Bil Lbs	5.07	---	+21.6
Dry Beans	Mil Cwt	28.7	---	+17.3
All Tobacco	Mil Lbs	809	---	+11.8
Sugarbeets	Mil Tons	30.1	---	-8.2
Sugarcane	Mil Tons	29.4	---	-4.4
Summer Potatoes	Mil Cwt	15.6	---	-9.6



August 2014 Crop Production



Crop	Unit	August 2012	% Change from Previous Forecast	% Change from Previous Season
Peaches	Thou Tons	864	---	- 4.2
Apples	Bil Lbs	10.9	---	+8.3
Pears	Thou Tons	799	---	- 8.9
Grapes	Mil Tons	7.94	---	-8.3
Hops	Mil Lbs	72.3	---	+4.2
Coffee (HI)	Mil Lbs	7.70	---	+10.0



United States Department of Agriculture
National Agricultural Statistics Service



Upcoming Reports

August 22 Cattle on Feed

August 27 Rice Stocks

August 28 Ag Prices

September 11 Crop Production



United States Department of Agriculture
National Agricultural Statistics Service



All Reports Available At

www.nass.usda.gov

For Questions

202-720-2127

800-727-9540

nass@nass.usda.gov