



United States Department of Agriculture
National Agricultural Statistics Service



Hogs & Pigs Inventory
June 1, 2015

Executive Briefing



Survey Overview



June Hogs & Pigs

Data Collection Period

May 30 – June 16

Sample Size

8,123

Collection Methods

Mail, Telephone, Internet, Face-to-Face Interview

Primary Data Items

Total Inventory: by Class, weight group, and quarter
Sows farrowing, pig crop, and pigs per litter



U.S. Hogs and Pigs Revisions



Survey	Item	Initial Estimate (1,000 head)	Previous Revision (1,000 head)	Current Revision (1,000 head)	Net Revision (1,000 head)	Current Estimate (1,000 head)
December 1, 2014	All Hogs and Pigs	66,050	+95 +0.1%	+1,581 +2.4%	+1,676 +2.5%	67,726
	Pig Crop	29,373		+1,260 +4.3%		30,633
March 1, 2015	All Hogs and Pigs	65,934		+700 +1.1%		66,634
	Pig Crop	28,758		+208 +0.7%		28,966



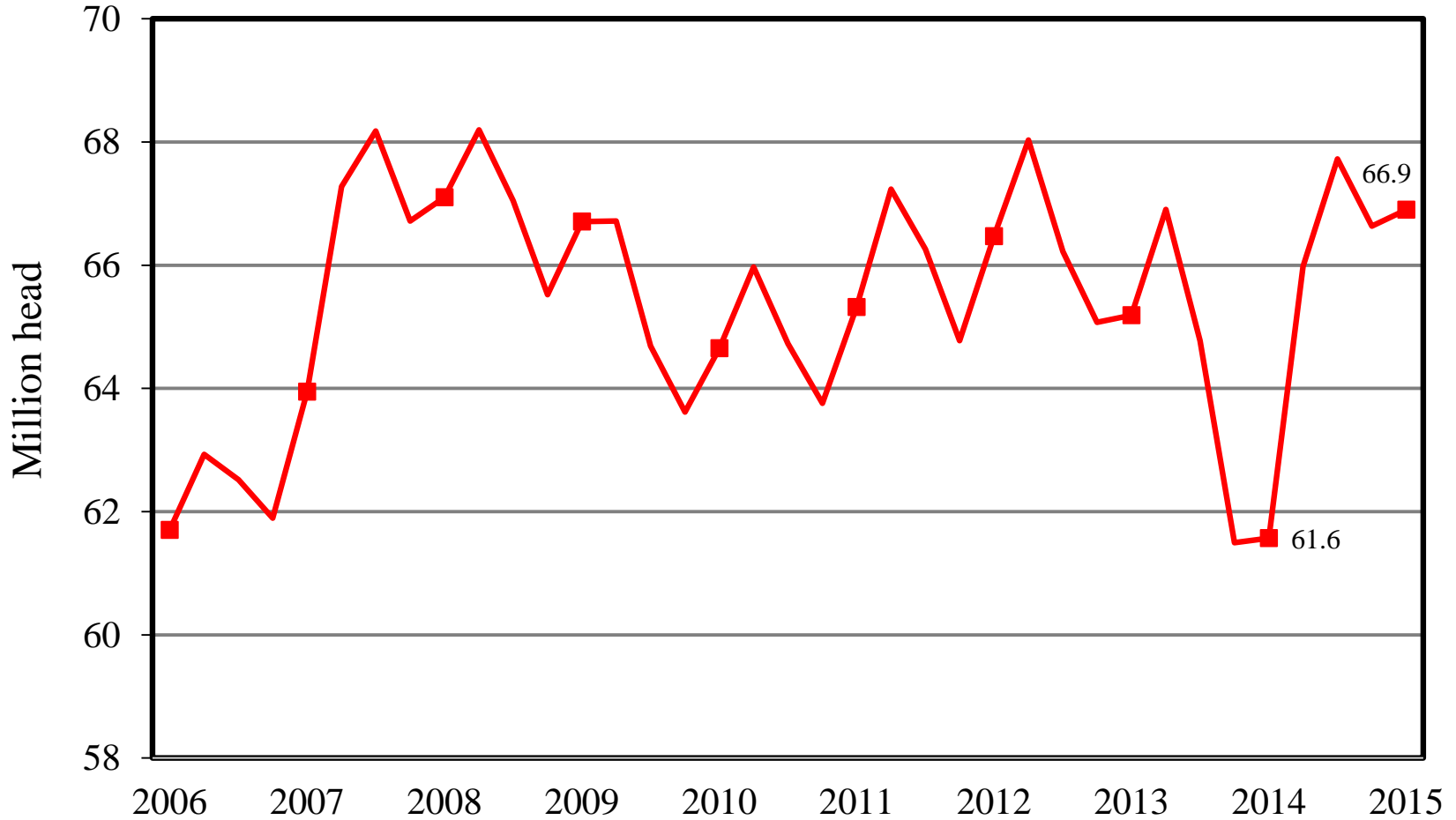
U.S. Hogs & Pigs June 1



Items	2014	2015	% PY
	1,000 head		
All Hogs & Pigs	61,568	66,900	109
Breeding Hogs	5,855	5,926	101
Market Hogs	55,713	60,975	109
180 lbs & over	10,166	11,529	113
120-179 lbs	11,491	12,810	111
50-119 lbs	15,801	17,181	109
less than 50 lbs	18,254	19,455	107
Sows Farrowed	2,810	2,850	101
Pig Crop	27,495	29,563	108
	number		
Pigs per Litter	9.78	10.37	106
	1,000 head		
June-August Farrowings	2,991	2,915	97
September-November Farrowings	2,994	2,865	96

U.S. Quarterly Hogs & Pigs

2006 - 2015





NASS Estimates Compared to Trade Expectations Percent of Previous Year

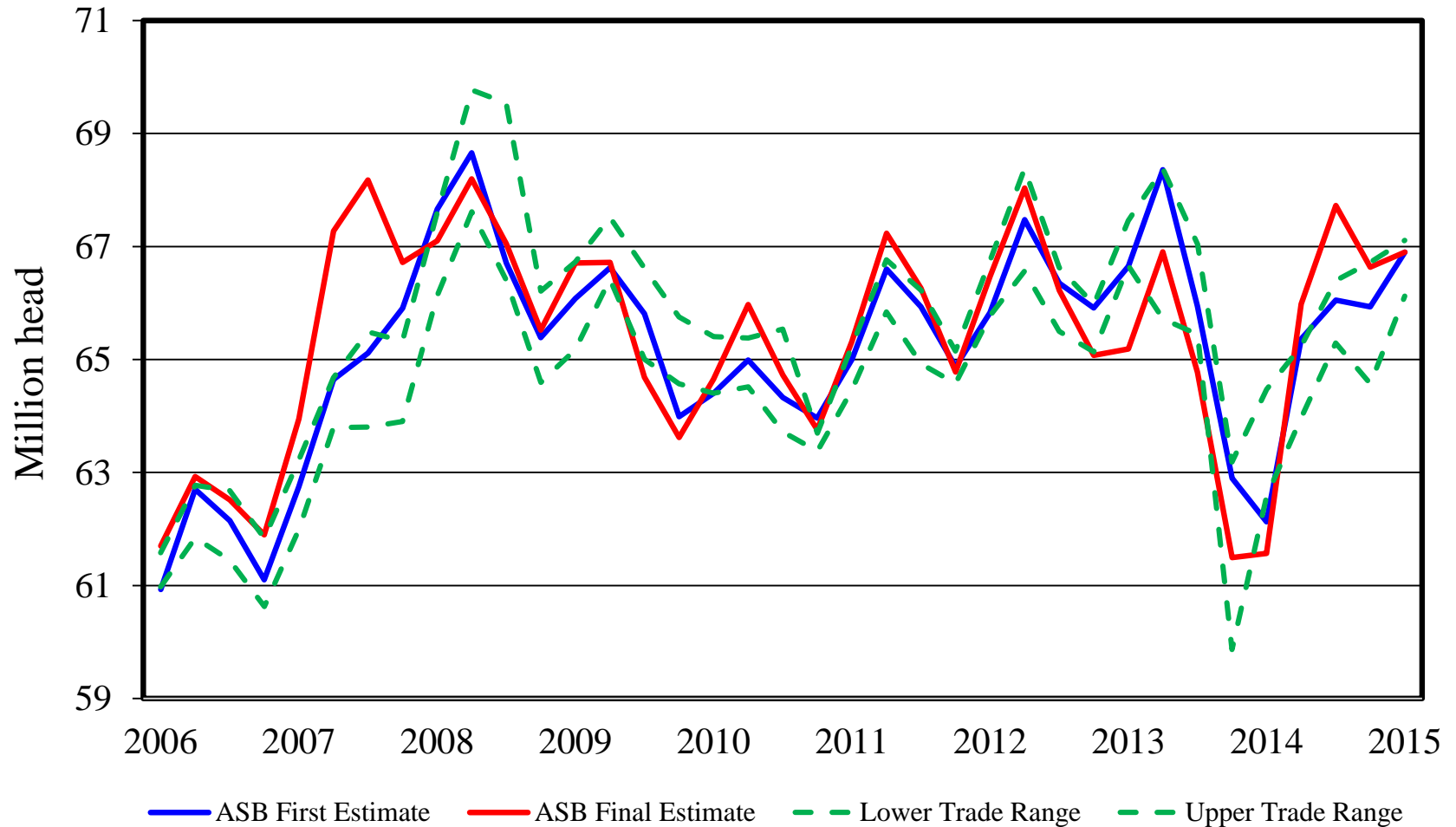


Inventory Items	NASS Estimate	Trade Average	Trade Range
All Hogs & Pigs	108.7%	108.1%	107.4% – 109.0%
Breeding Hogs	101.2%	102.1%	101.3% – 102.7%
Market Hogs	109.4%	108.9%	107.9% – 110.8%
Mar – May Pig Crop	107.5%	107.8%	106.1% – 109.2%
Farrowing Intentions			
Jun – Aug 2015	97.4%	99.5%	97.0% – 101.3%
Sep – Nov 2015	95.7%	100.6%	97.4% – 102.8%

All Hogs and Pigs

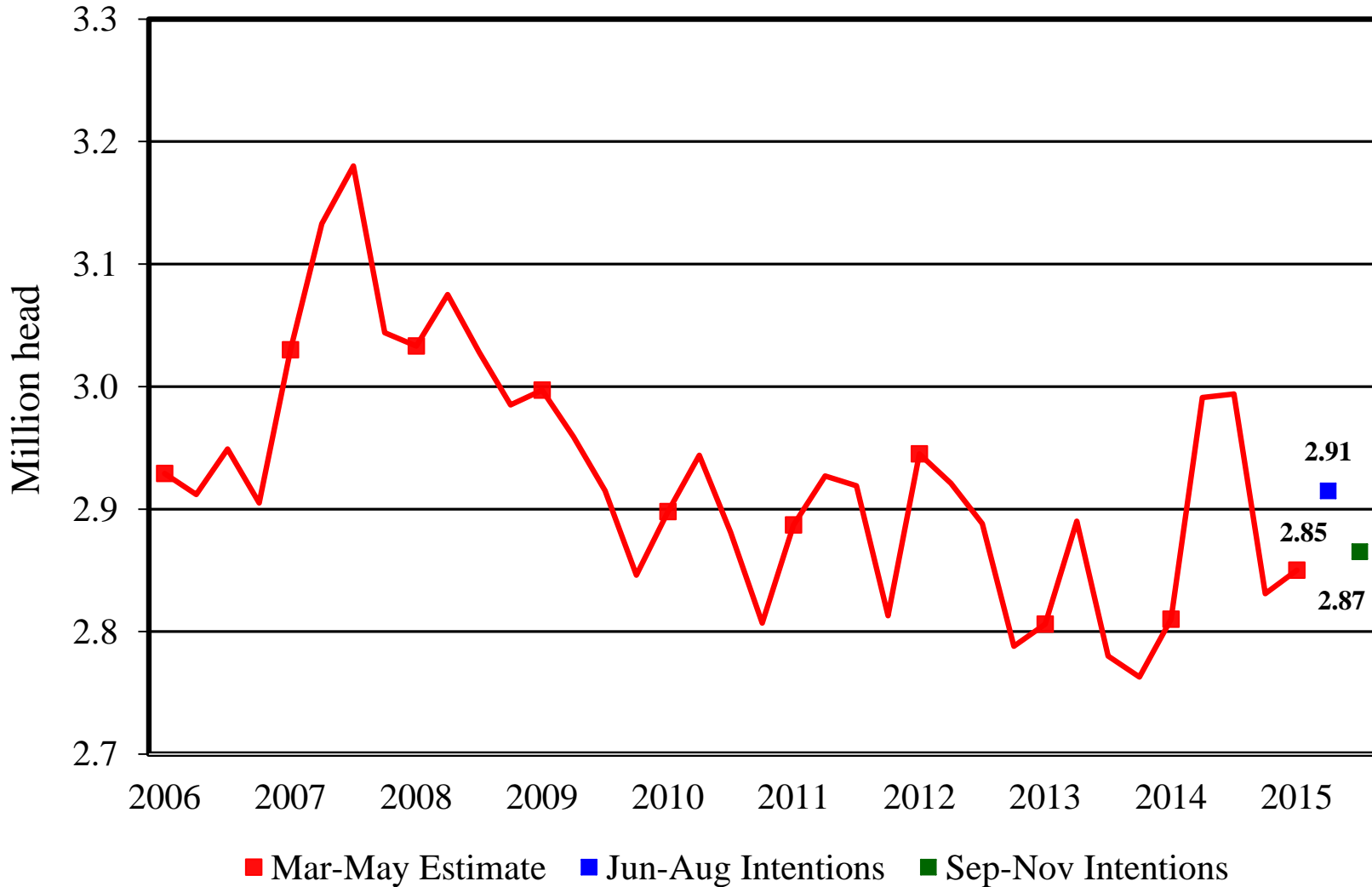
First Estimate Versus Final Estimate

2006 - 2015



U.S. Quarterly Sows Farrowed

2006-2015





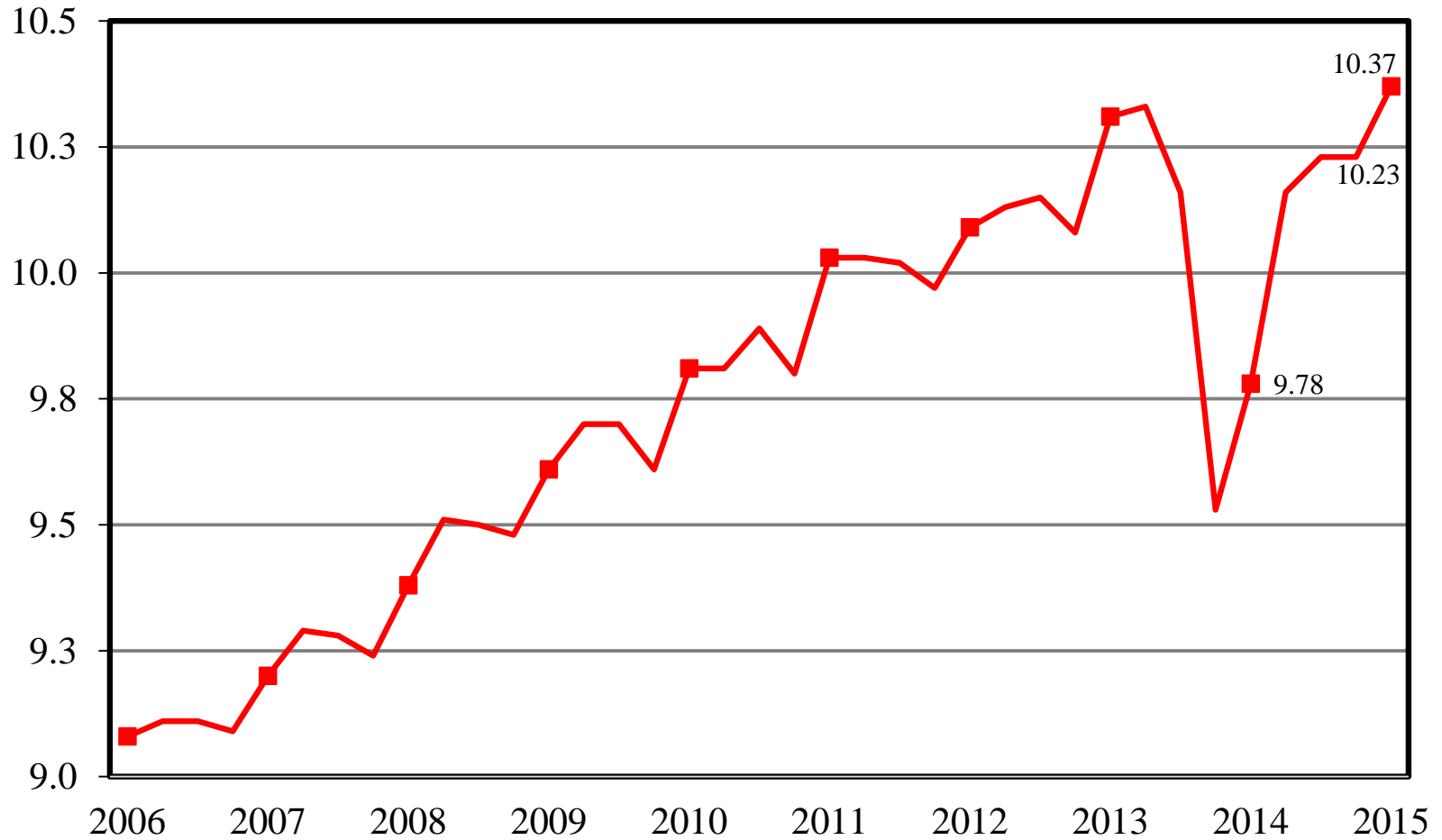
Breeding Herd Inventory

Disposition & Utilization



Year	Mar 1 Estimate (1,000 head)	Slaughter (1,000 head)	Additions (1,000 head)	Jun 1 Estimate (1,000 head)	Sow Utilization (Percent)
2006	6,045	889	924	6,080	48
2007	6,149	955	975	6,169	49
2008	6,200	1,023	954	6,131	49
2009	5,992	876	852	5,968	50
2010	5,760	847	875	5,788	50
2011	5,788	826	841	5,803	50
2012	5,820	813	855	5,862	51
2013	5,834	848	898	5,884	48
2014	5,851	775	779	5,855	48
2015	5,982	781	725	5,926	48

U.S. Quarterly Pigs per Litter 2006-2015

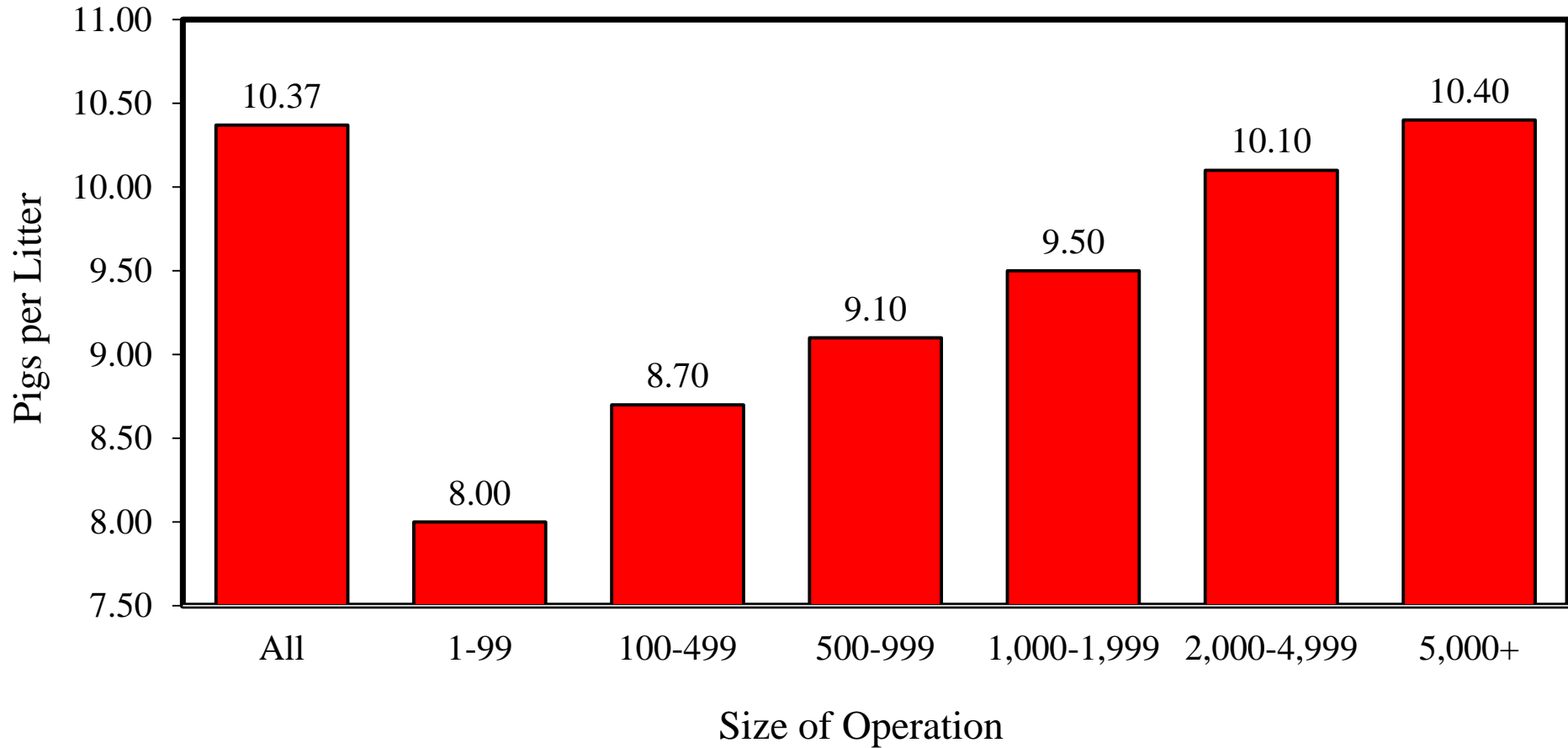




U.S. Pigs per Litter by Size of Operation

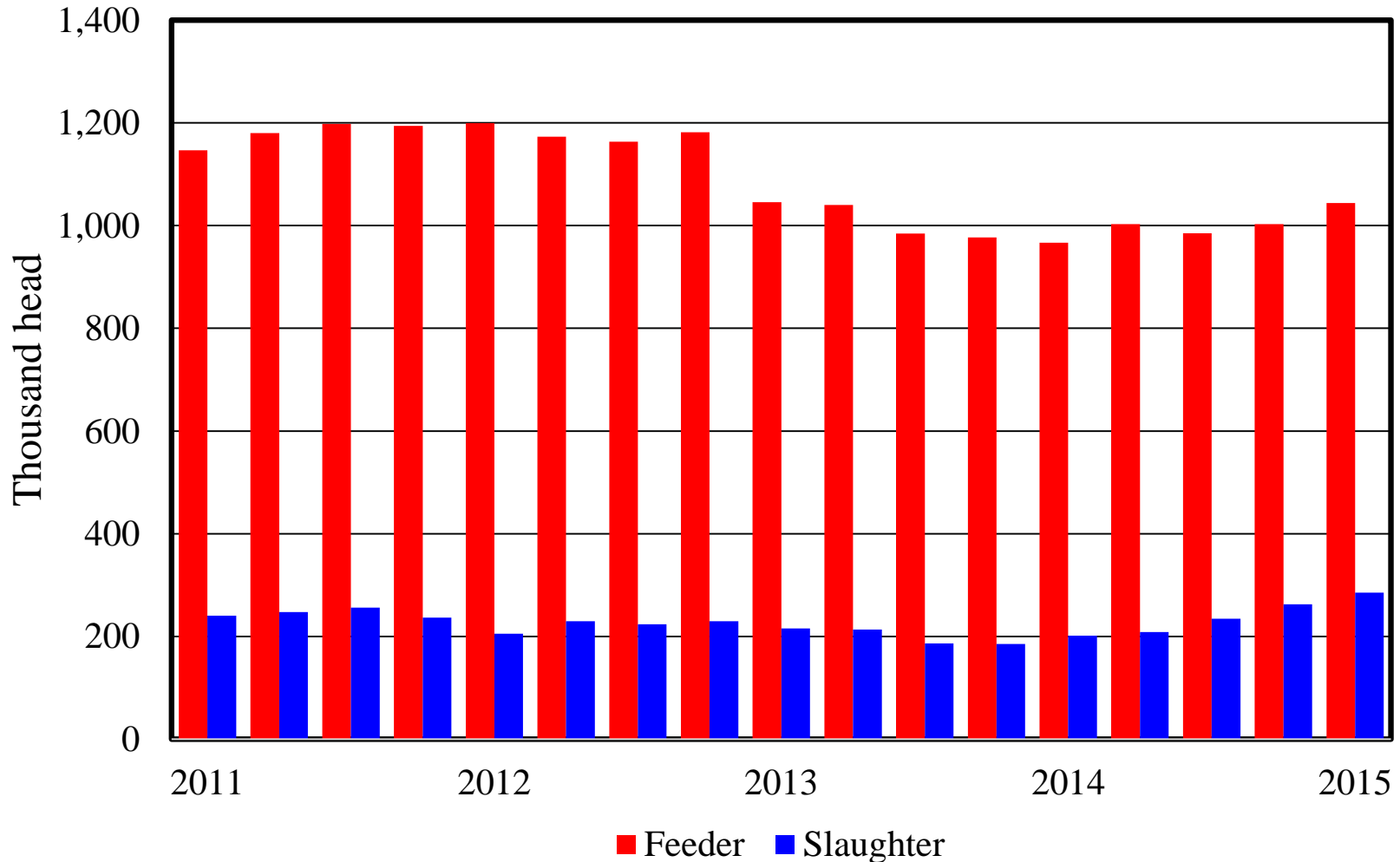


March-May 2015

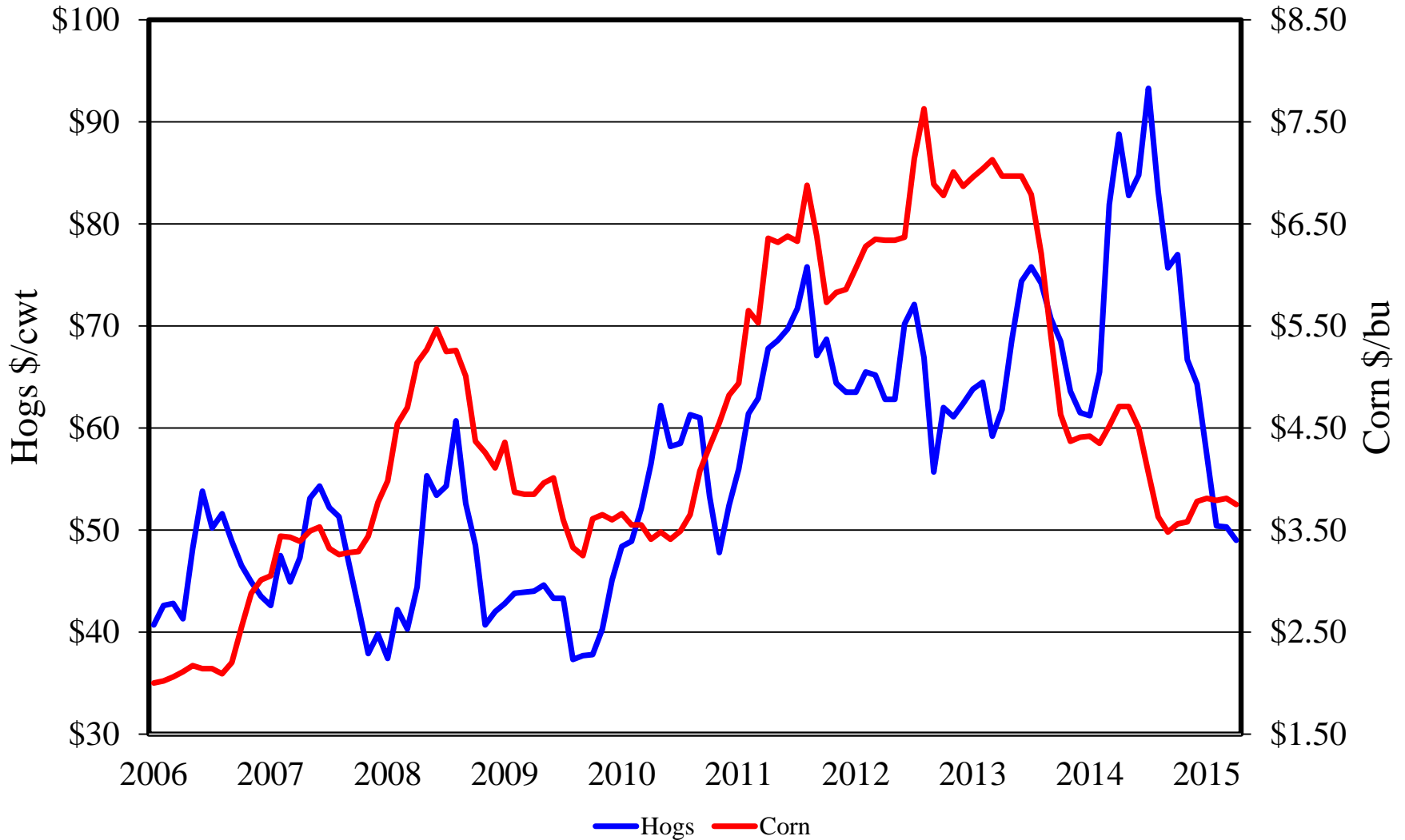


Canadian Imports by Quarter

Feeder Pigs and Slaughter Hogs



U.S. Prices Received by Farmers for Hogs & Corn





Upcoming NASS Reports



Release Date	Report Title
June 29	Agricultural Prices
June 30	Acreage Grain Stocks
July 1	CAIR: Cotton Grain Crushings
July 10	Crop Production
July 21	Milk Production
July 24	Cattle Cattle on Feed



United States Department of Agriculture
National Agricultural Statistics Service



All Reports Available At
www.nass.usda.gov

For Questions
(202) 720-3570
(800) 727-9540
nass@nass.usda.gov