



United States Department of Agriculture
National Agricultural Statistics Service

July Crop Production
Executive Summary

Lance Honig, Chief
Crops Branch



Contents

Field Crops	Fruit and Nuts	Specialty Crops
Winter Wheat	Citrus	Tobacco
Other Spring Wheat	Apricots	A. Winter Peas
Durum Wheat	Almonds	Dry Peas
Barley		Lentils
Oats		



Survey Overview

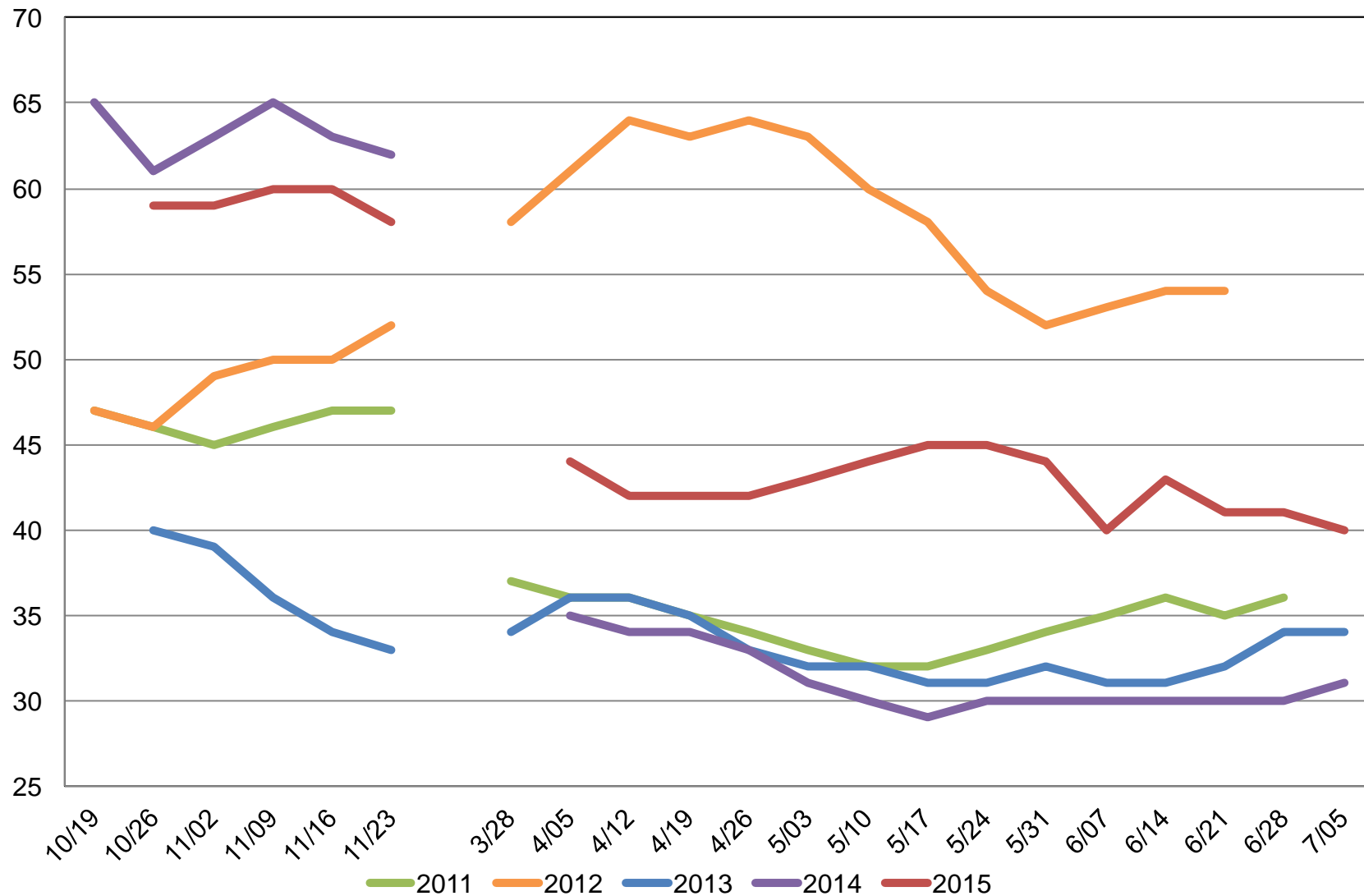
	Ag Yield	Objective Yield
Survey Type	Farmer Reported	Field Measurement
Crops Included	Winter, Spring & Durum Wheat, Oats, Barley, Tobacco	Winter Wheat
States	35	10
Sample Size	7,899	1,470
Collection Period	June 26– July 7	June 24– July 1



U.S. Winter Wheat Condition

Percent Rated Good to Excellent

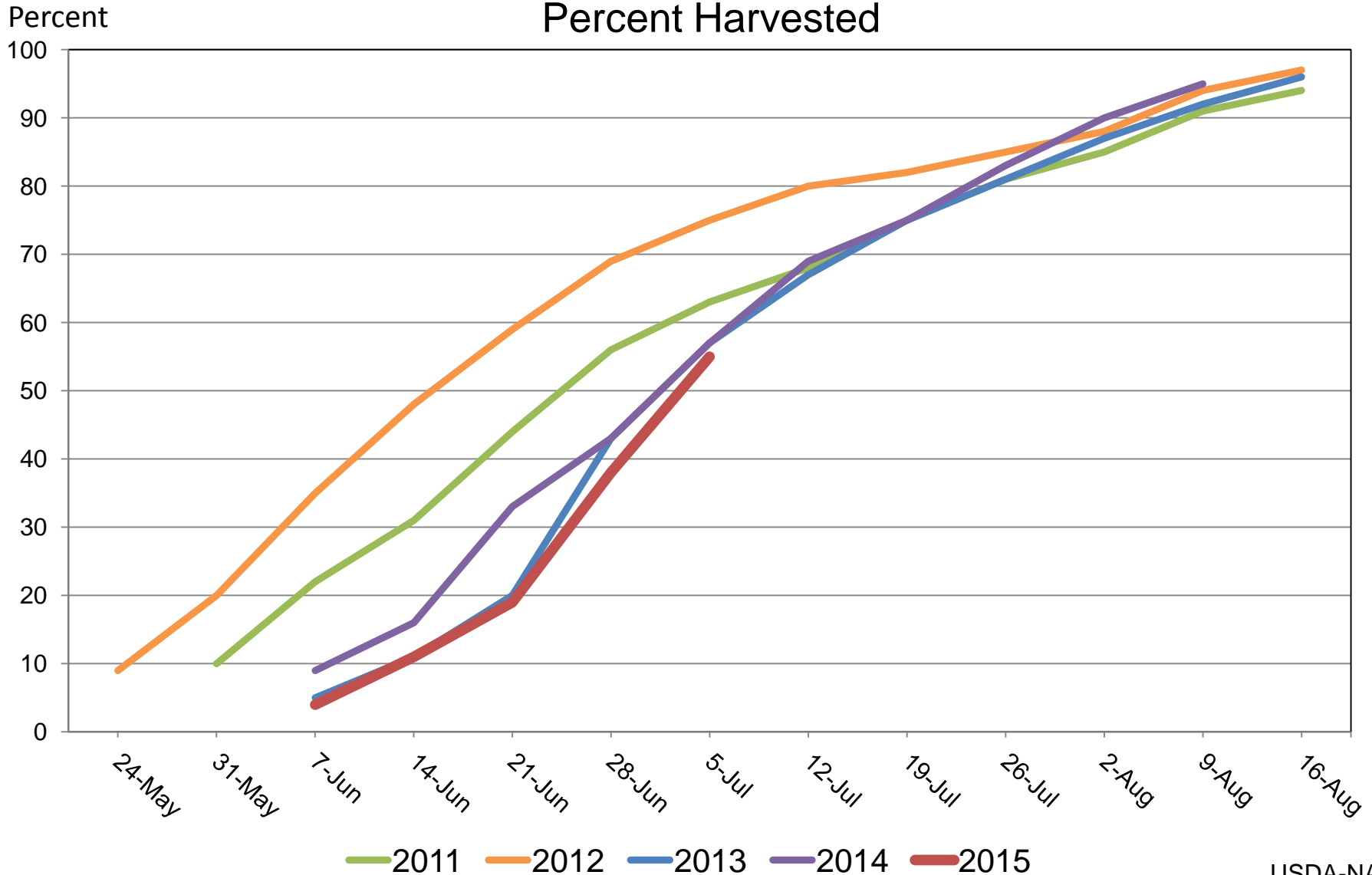
Percent





U.S. Winter Wheat Progress

Percent Harvested



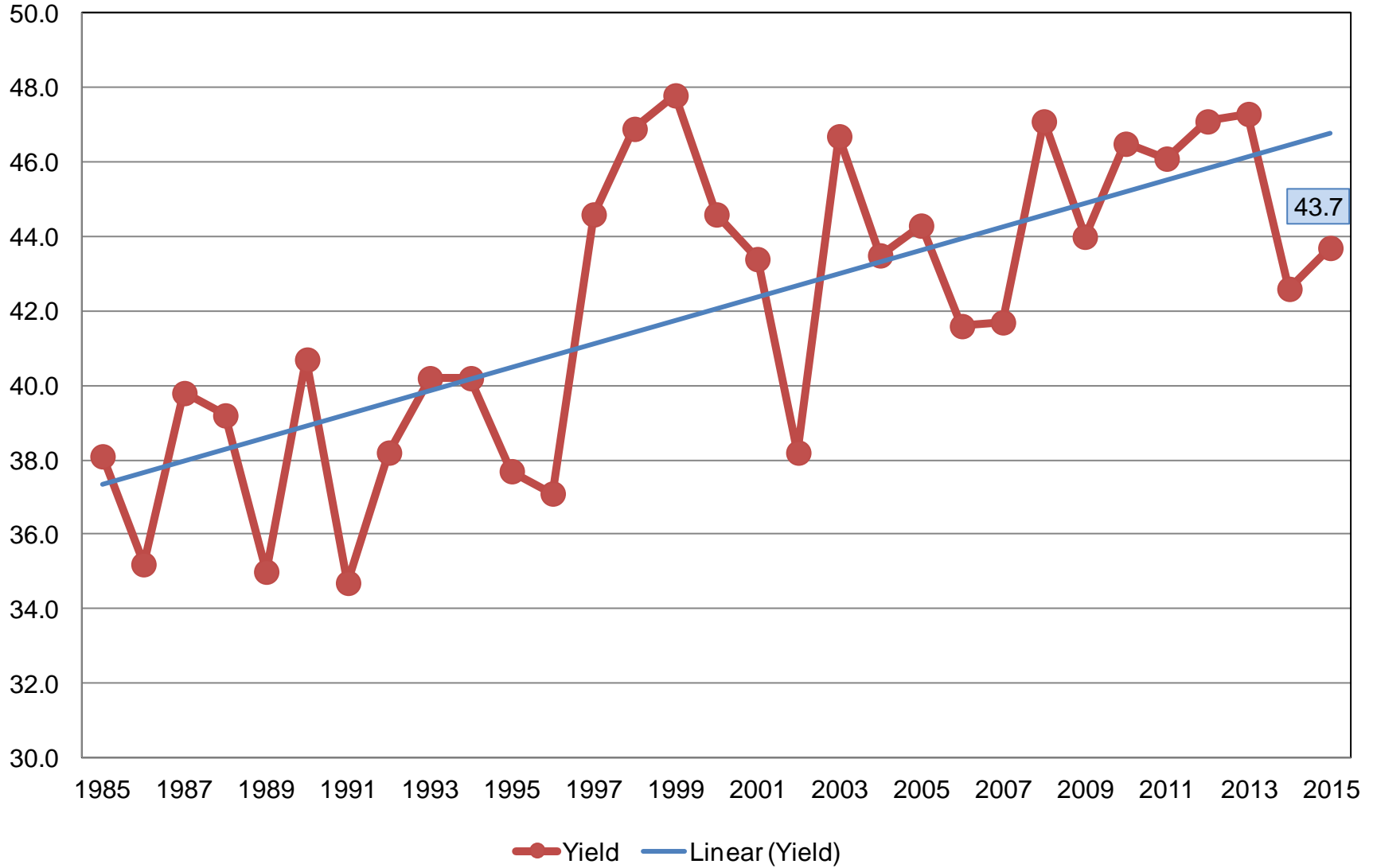


July 2015 Crop Production

Crop	Unit	July 2015	% Change From Previous Forecast	% Change From Previous Season
Wheat, Winter				
Harvested	Mil Ac	33.3	NC	+3.2
Yield	Bu/Ac	43.7	-1.8	+2.6
Production	Bil Bu	1.46	-3.3	+5.7
Production by Class				
Hard Red	Mil Bu	866	-2.4	+17.4
Soft Red	Mil Bu	393	-4.9	-13.6
White	Mil Bu	196	-4.0	+6.2

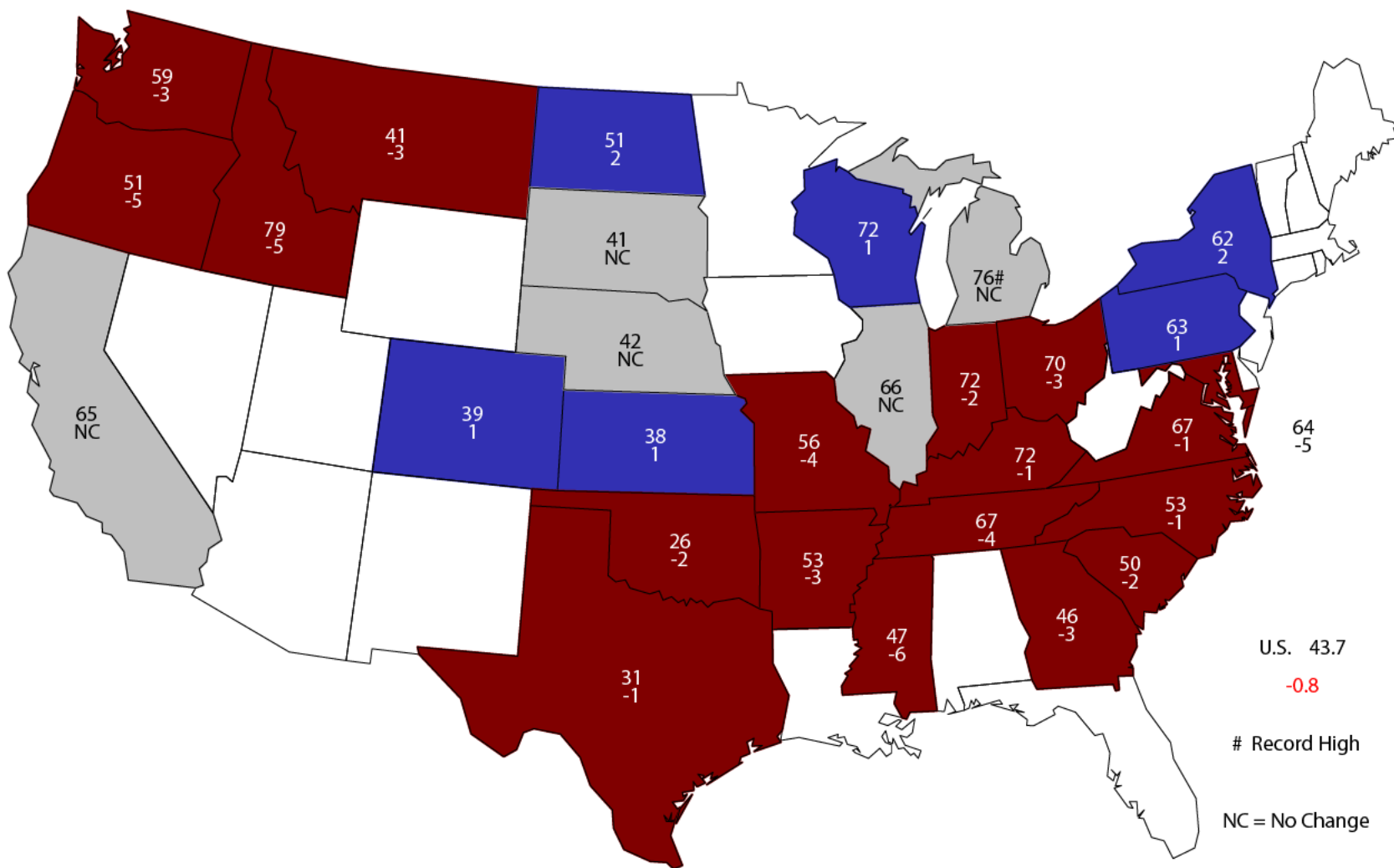
Winter Wheat Yield United States

Bushels per Acre



July 1, 2015 Winter Wheat Yield

Bushels and Change From Previous Month



U.S. 43.7
-0.8

Record High
NC = No Change



Winter Wheat Objective Yield - July

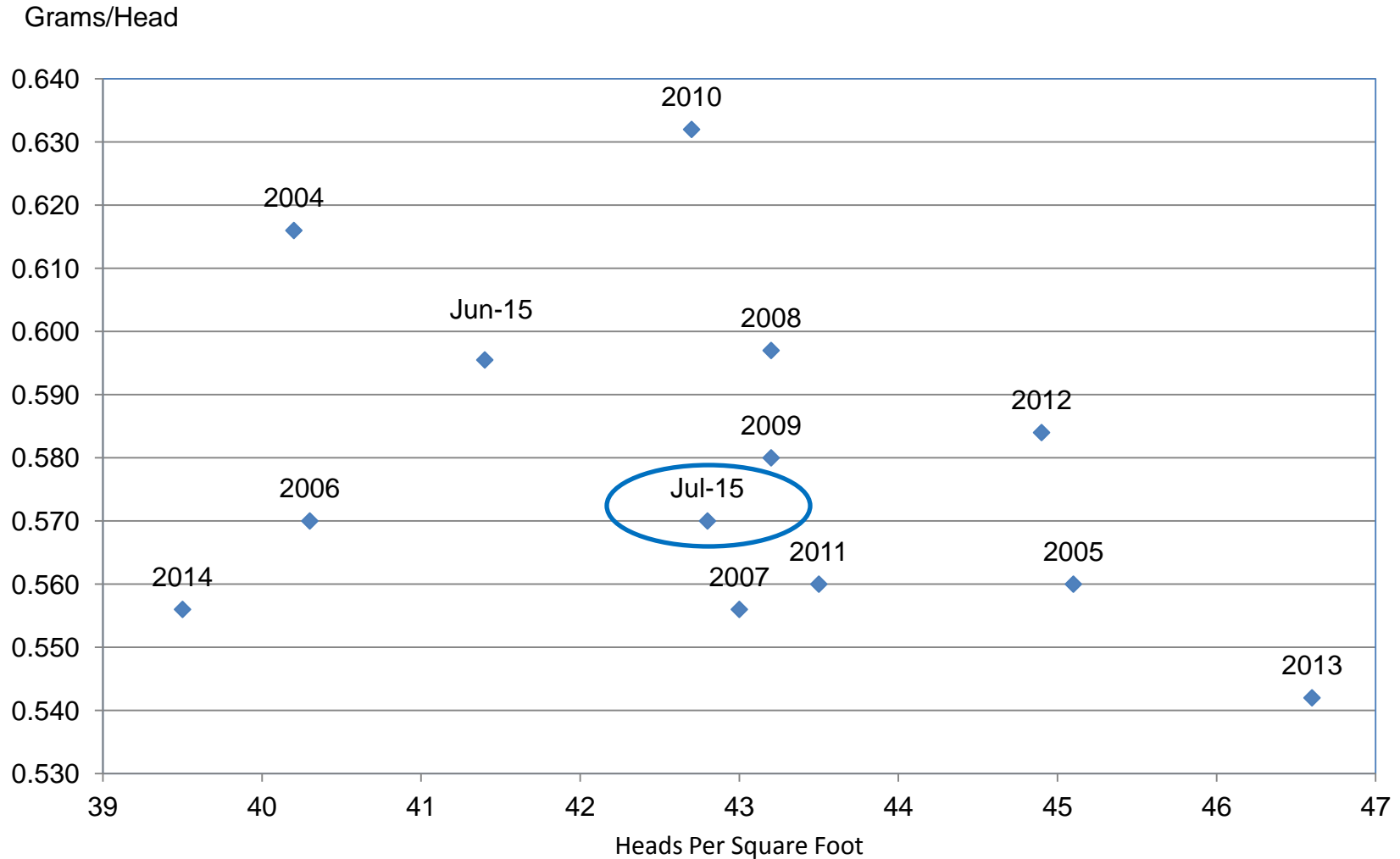
Percent of Samples Processed in the Lab

Year	Mature ---Percent---
2010	58
2011	60
2012	77
2013	55
2014	58
2015	64



Wheat Objective Yield Region

Heads Per Square Foot vs. Implied Head Weight



$$\text{Implied Head Weight} = (\text{Published Yield} * 60) / \text{Heads}$$

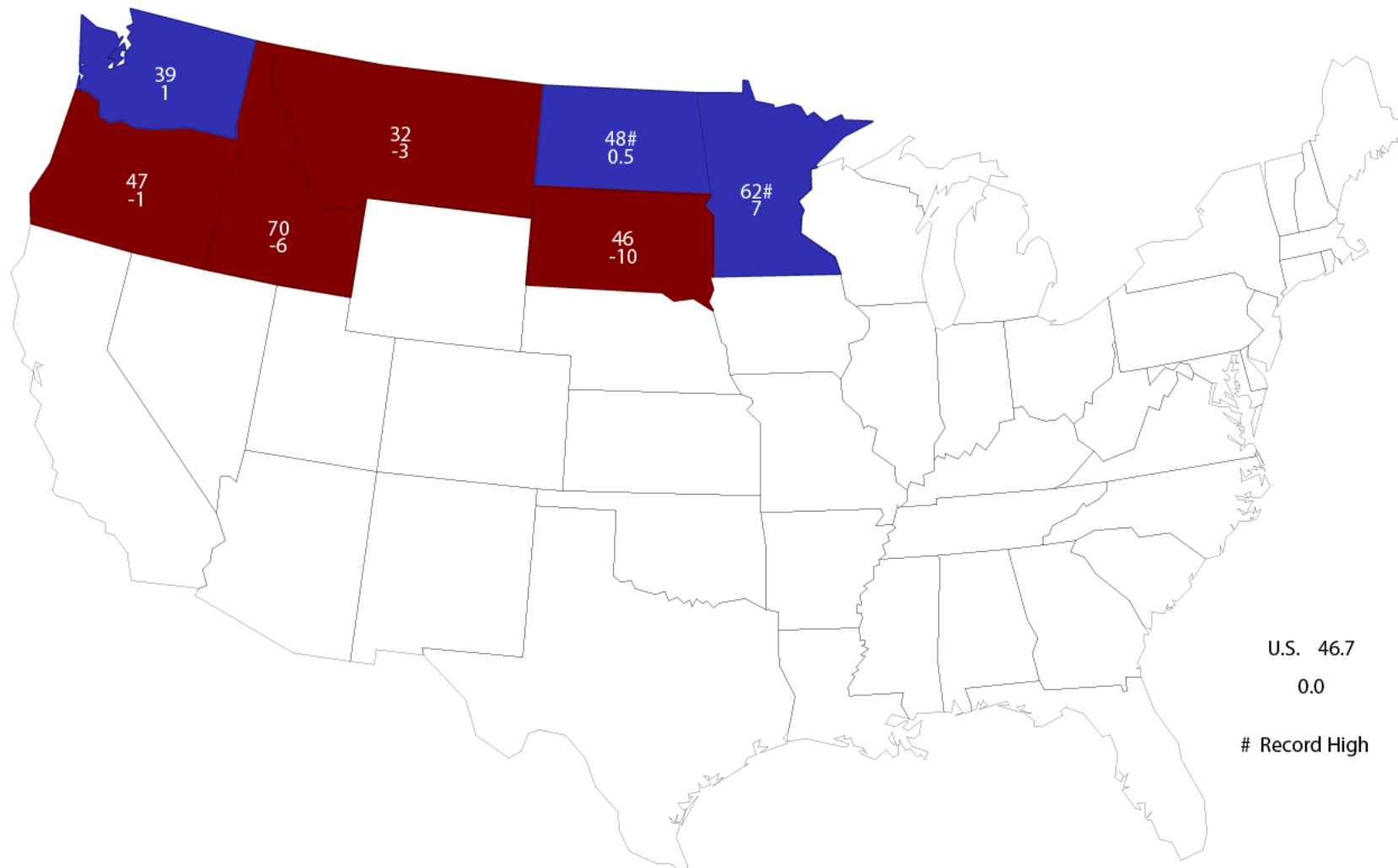


July 2015 Crop Production

Crop	Unit	July 2015	% Change From Previous Forecast	% Change From Previous Season
Wheat, Spring				
Harvested	Mil Ac	13.2	NC	+3.7
Yield	Bu/Ac	46.7	NA	NC
Production	Mil Bu	617	NA	+3.7

July 1, 2015 Other Spring Wheat Yield

Bushels and Change From Previous Year



U.S. 46.7
0.0

Record High



July 2015 Crop Production

Crop	Unit	July 2015	% Change From Previous Forecast	% Change From Previous Season
Wheat, Durum				
Harvested	Mil Ac	1.91	NC	+42.7
Yield	Bu/Ac	39.6	NA	-0.3
Production	Mil Bu	75.5	NA	+42.3



July 2015 Crop Production

Crop	Unit	July 2015	% Change From Previous Forecast	% Change From Previous Season
Wheat, All				
Harvested	Mil Ac	48.5	NC	+4.5
Yield	Bu/Ac	44.3	NA	+1.4
Production	Bil Bu	2.15	NA	+6.0



July 2015 Crop Production

Crop	Unit	July 2015	% Change From Previous Forecast	% Change From Previous Season
Oats				
Harvested	Mil Ac	1.22	NC	+18.6
Yield	Bu/Ac	68.6	NA	+1.3
Production	Mil Bu	83.6	NA	+20.0
Barley				
Harvested	Mil Ac	2.92	NC	+19.5
Yield	Bu/Ac	71.3	NA	-1.5
Production	Mil Bu	208	NA	+17.7



July 2015 Crop Production

Crop	Unit	July 2015	% Change From Previous Forecast	% Change From Previous Season
Production				
Oranges	Mil Tons	6.38	-0.7	-5.6
Grapefruit	Thou Tons	926	-5.7	-11.6
Lemons	Thou Tons	880	-0.7	+6.8
Tangelos	Thou Tons	31.0	-3.1	-22.5
Tangerines & Mandarins	Thou Tons	758	NC	+3.3



July 2015 Crop Production

Crop	Unit	July 2015	% Change From Previous Estimate	% Change From Previous Season
Tobacco, Flue-Cured				
Harvested	Thou Ac	207	NC	-15.7
Yield	Lbs/Ac	2202	NA	-5.7
Production	Mil Lbs	455	NA	-20.5



July 2015 Crop Production

Crop	Unit	July 2015	% Change From Previous Forecast	% Change From Previous Season
Production				
Almonds (CA)	Bil Lbs	1.80	-2.7	-3.7
Apricots	Thou Tons	53.0	NA	-17.3



July 2015 Crop Production

Crop	Unit	July 2015	% Change From Previous Estimate	% Change From Previous Season
A. Winter Peas				
Planted	Thou Ac	28.0	+40.0	+16.7
Harvested	Thou Ac	21.0	NA	+25.0
Dry Peas				
Planted	Thou Ac	980	-2.5	+4.8
Harvested	Thou Ac	927	NA	+3.1
Lentils				
Planted	Thou Ac	485	+26.0	+72.6
Harvested	Thou Ac	468	NA	+80.7



Upcoming Reports

Release Date	Report Title
July 17	Noncitrus Fruits and Nuts Annual
July 24	Cattle Cattle on Feed
July 30	Agricultural Prices
August 3	CAIR: Cotton CAIR: Flour Millings CAIR: Grain Crushings CAIR: Fats & Oils
August 12	Crop Production Cotton Ginnings



United States Department of Agriculture
National Agricultural Statistics Service

All Reports Available At
www.nass.usda.gov

For Questions
202-720-2127
800-727-9540
nass@nass.usda.gov