



United States Department of Agriculture  
**National Agricultural Statistics Service**

---

---

**November Crop Production**  
Executive Summary

Lance Honig, Chief  
Crops Branch



# Contents

Field Crops	Fruit & Nuts	Specialty Crops
Corn	Citrus	Sugarbeets
Soybeans		Sugarcane
Cotton		Dry Edible Peas
Rice		Lentils
Peanuts		Austrian Winter Peas
Sorghum		Fall Potatoes
Cottonseed		



# Survey Overview

## Florida Citrus

	<b>Objective Surveys (Size and Drop)</b>	<b>Fruit Maturity</b>
Survey Type	Field Observations	Laboratory Tests
Crops Included	All	Oranges, Grapefruit
Sample Size	1,825 groves	425 samples
Collection Period	Oct 12 – 23	Oct 28 – 30

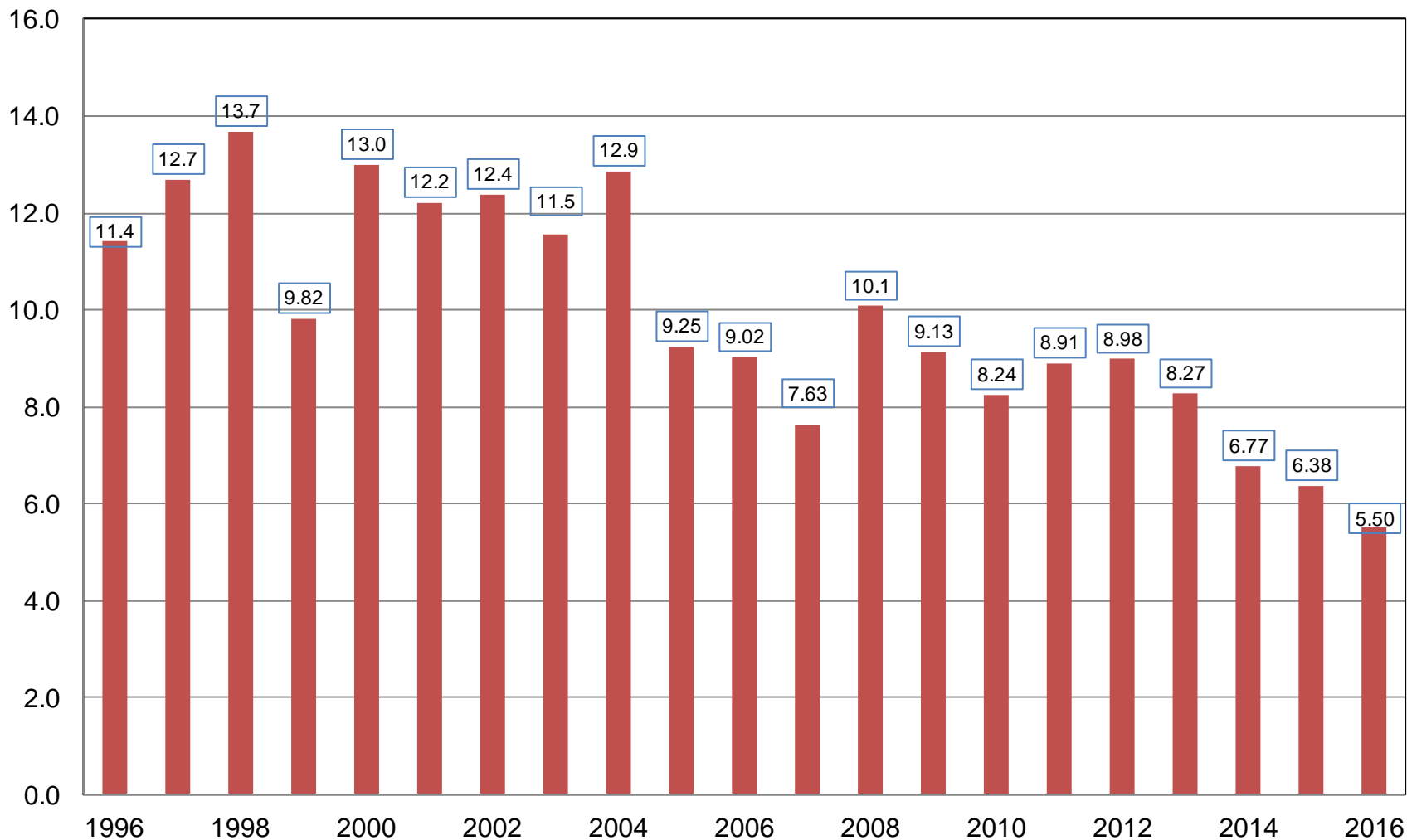


# November 2015 Crop Production

Crop	Unit	November 2015	% Change From Previous Forecast	% Change From Previous Season
Production				
Oranges	Mil Tons	5.50	-4.7	-13.7
Grapefruit	Thou Tons	819	-0.5	-5.9
Tangelos	Thou Tons	18.0	-10.0	-41.9
Tangerines & Mandarins	Thou Tons	843	NC	NC

# Orange Production United States

Million Tons





# Survey Overview

	Ag Yield	Objective Yield
Survey Type	Farmer Reported	Field Measurement
Crops Included	Field Crops	Corn, Cotton, Soybeans
Sample Size	9,203	4,972
Collection Period	Oct 28 – Nov 5	Oct 24 – Nov 1



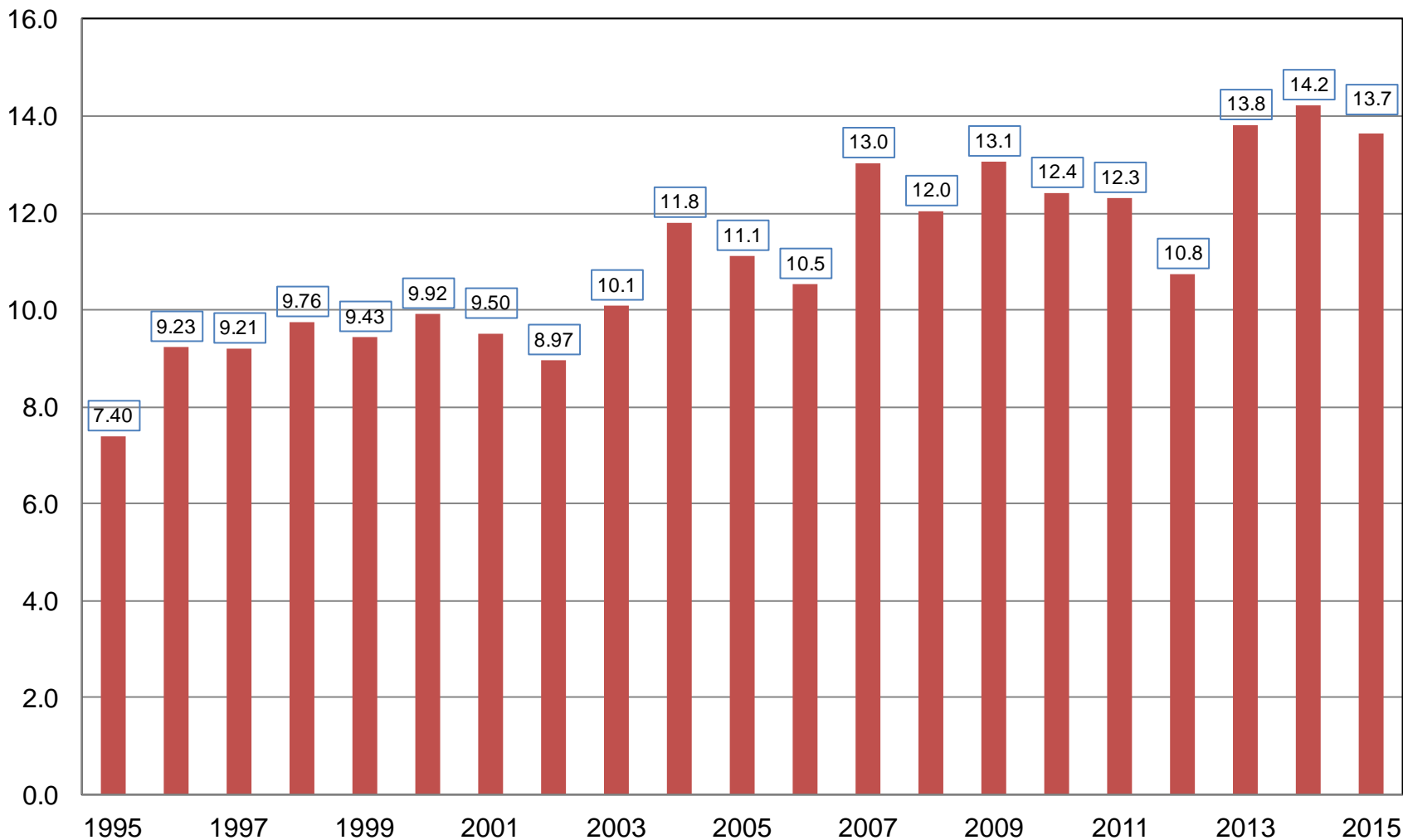
# November 2015 Crop Production

Crop	Unit	November 2015	% Change From Previous Forecast	% Change From Previous Season
Corn				
Harvested	Mil Ac	80.7	NC	-3.0
Yield	Bu/Ac	169.3	+0.8	-1.0
Production	Bil Bu	13.7	+0.7	-4.0



# Corn for Grain Production United States

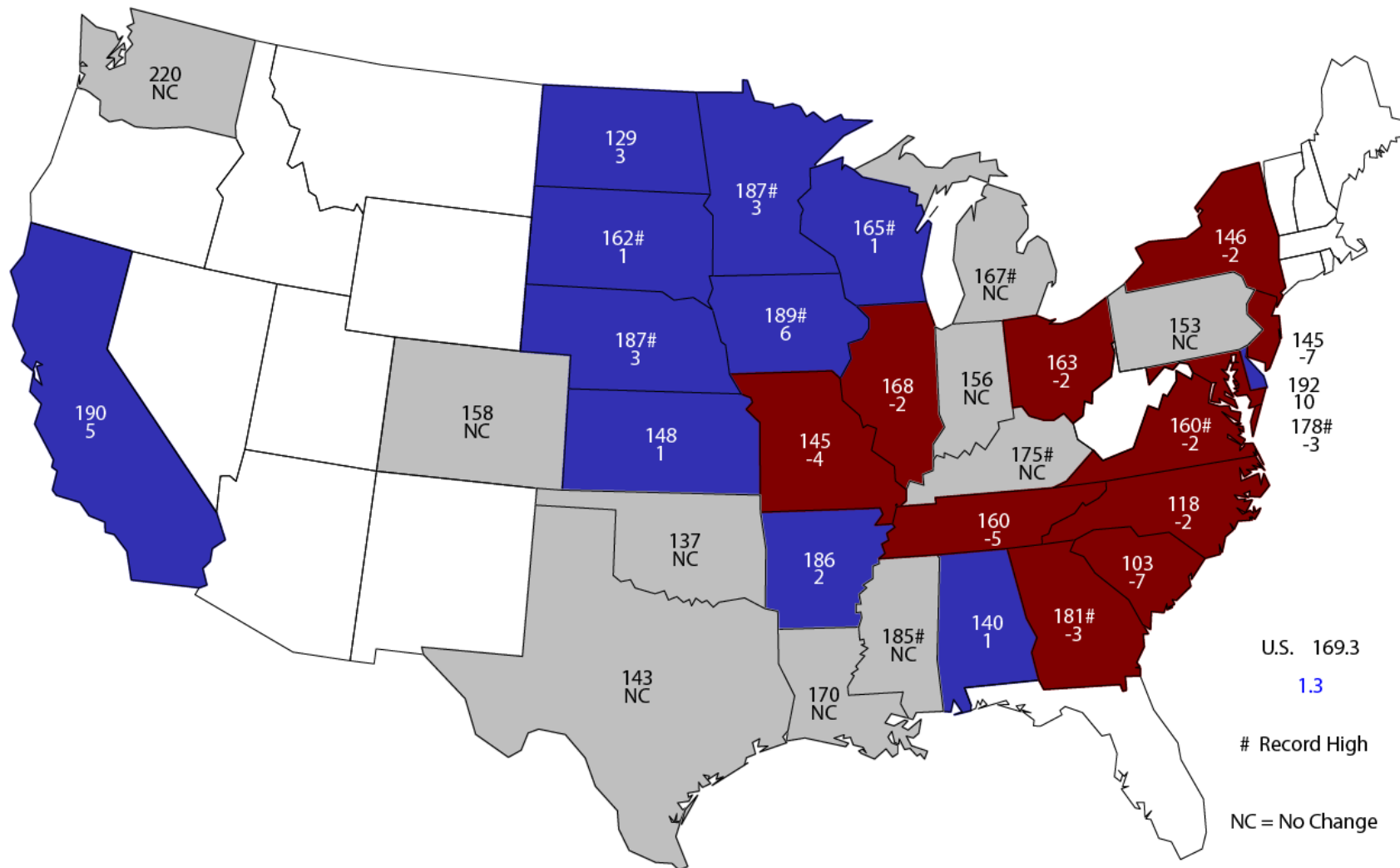
Billion Bushels





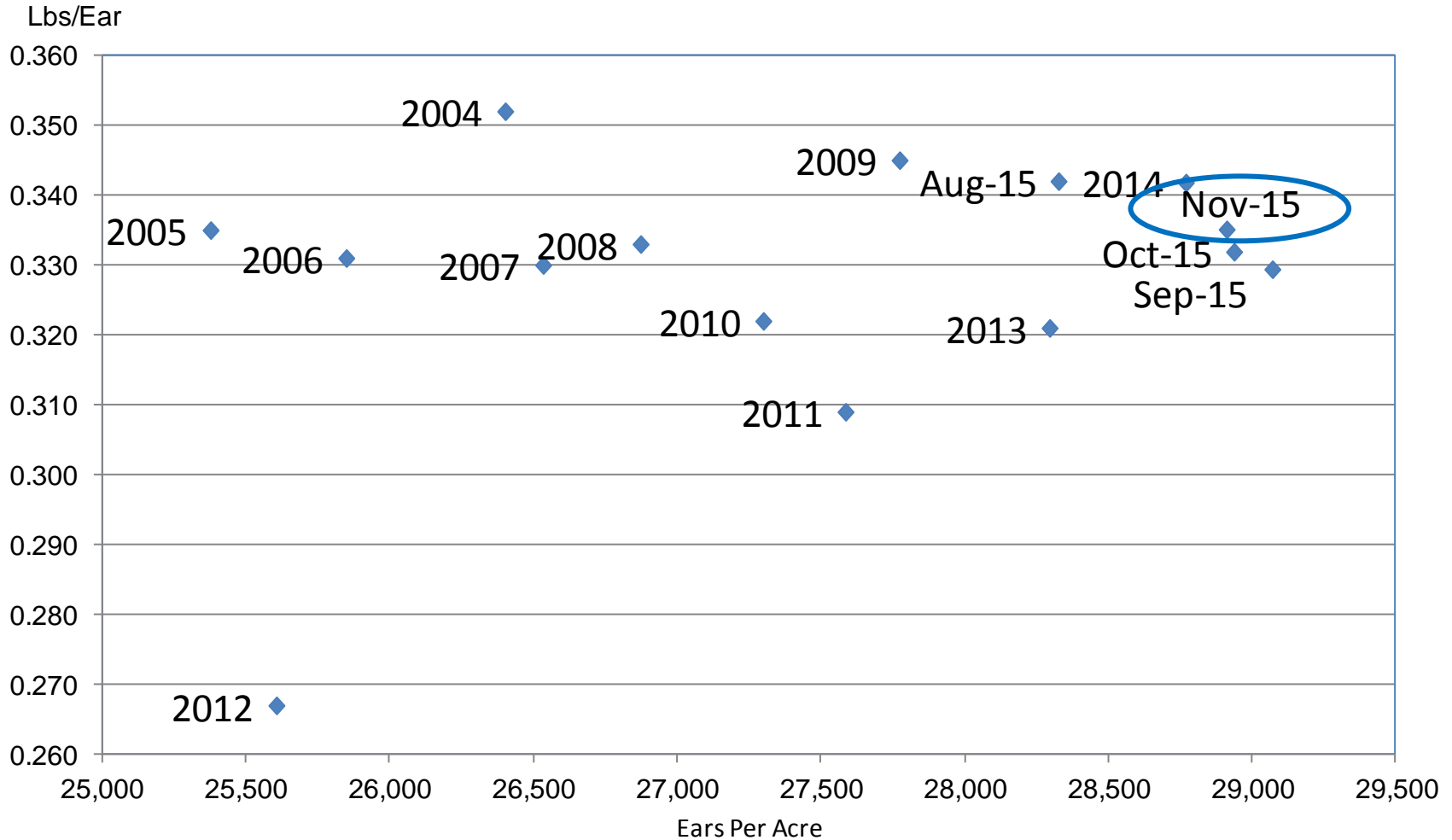
# November 1, 2015 Corn Yield

## Bushels and Change From Previous Month



# Corn Objective Yield Region

## Ears Per Acre vs. Implied Ear Weight



$$\text{Implied Ear Weight} = (\text{Published Yield} * 56) / \text{Ears}$$



# Corn Objective Yield - November

## Percent of Samples Processed in the Lab

Year	Dent Stage	Mature
	<i>Percent</i>	
2011	< 0.5	94
2012	< 0.5	95
2013	< 0.5	86
2014	< 0.5	96
2015	< 0.5	96



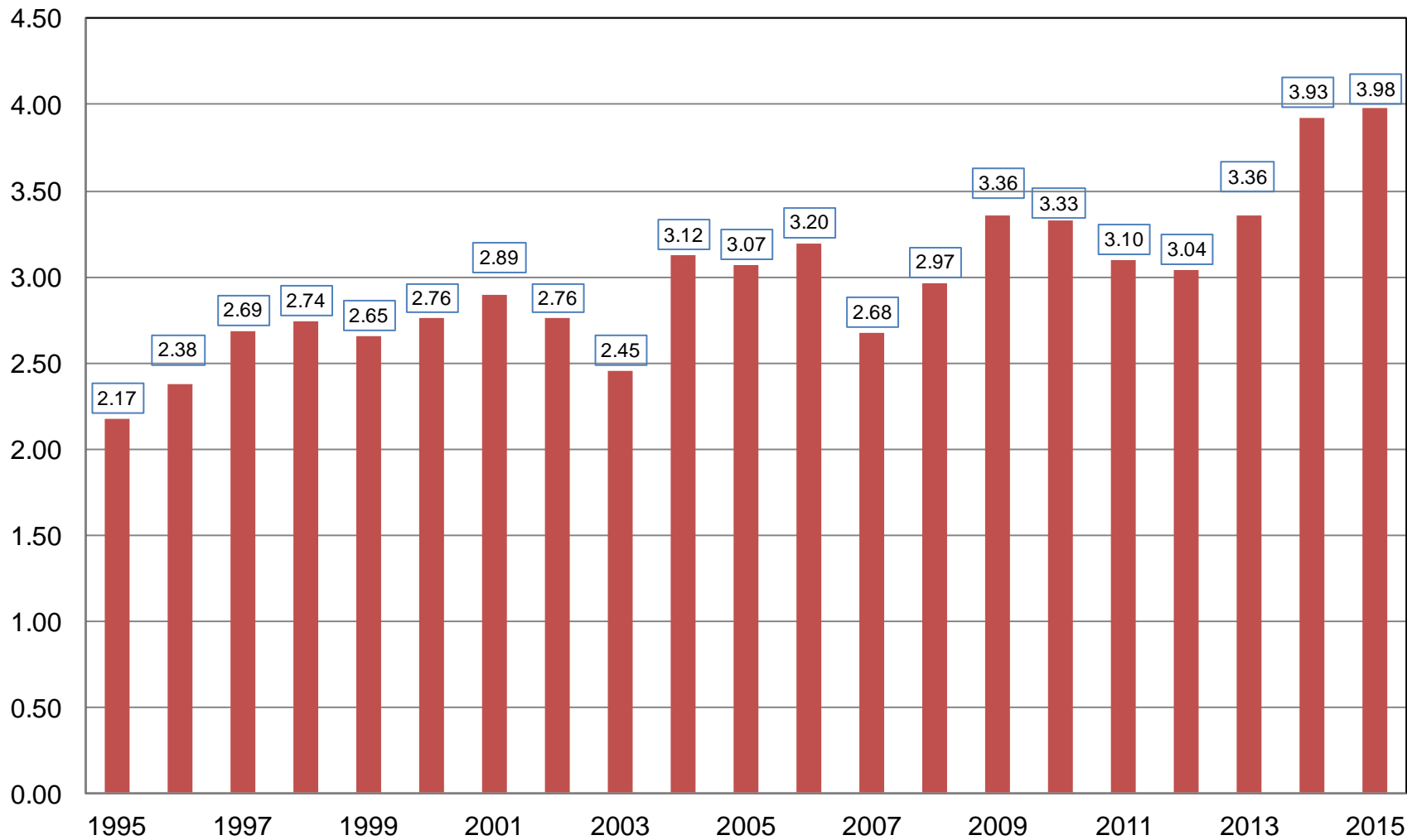
# November 2015 Crop Production

Crop	Unit	November 2015	% Change From Previous Forecast	% Change From Previous Season
Soybeans				
Harvested	Mil Ac	82.4	NC	-0.2
Yield	Bu/Ac	48.3	+2.3	+1.7
Production	Bil Bu	3.98	+2.4	+1.4



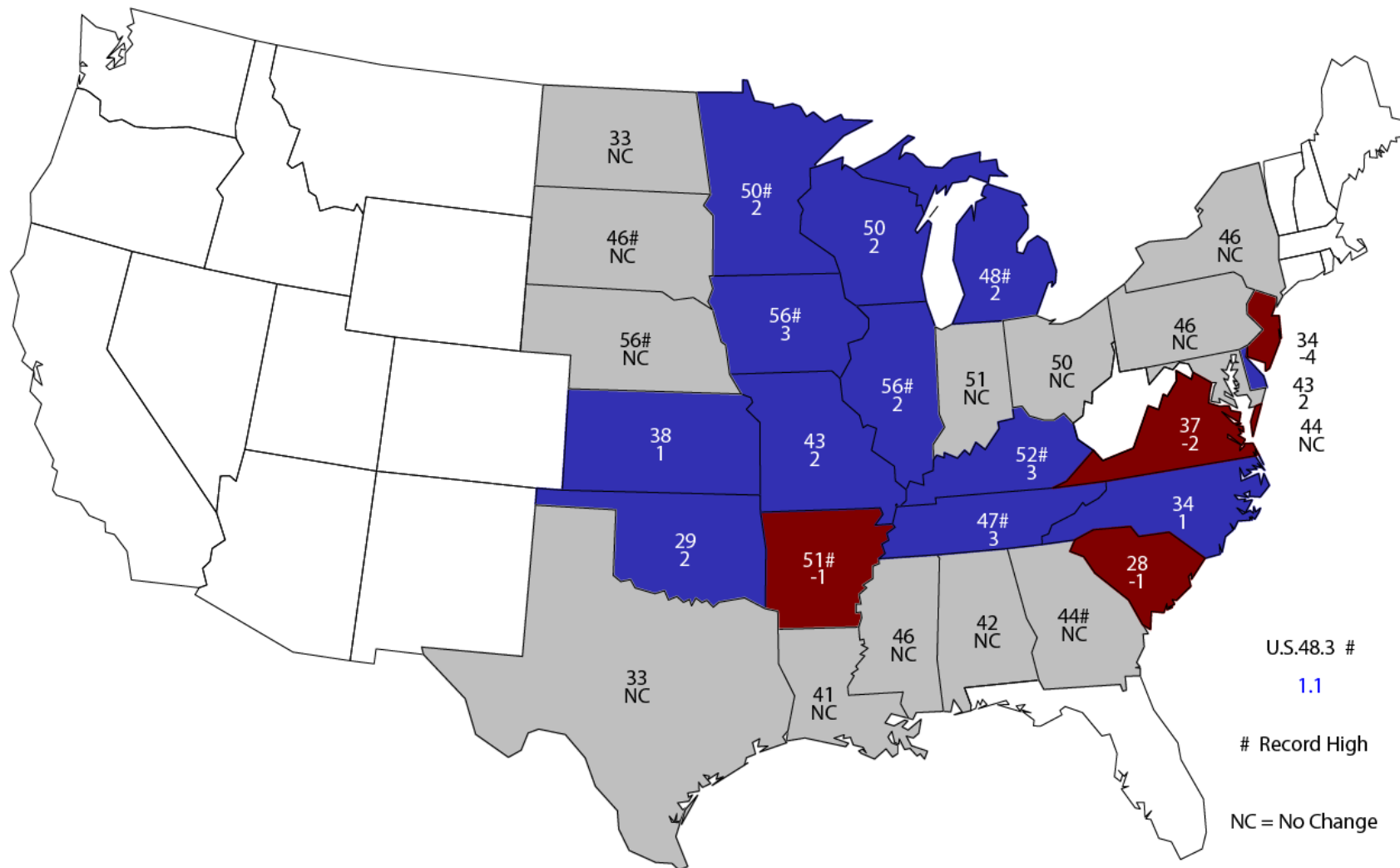
# Soybean Production United States

Billion Bushels



# November 1, 2015 Soybean Yield

## Bushels and Change From Previous Month

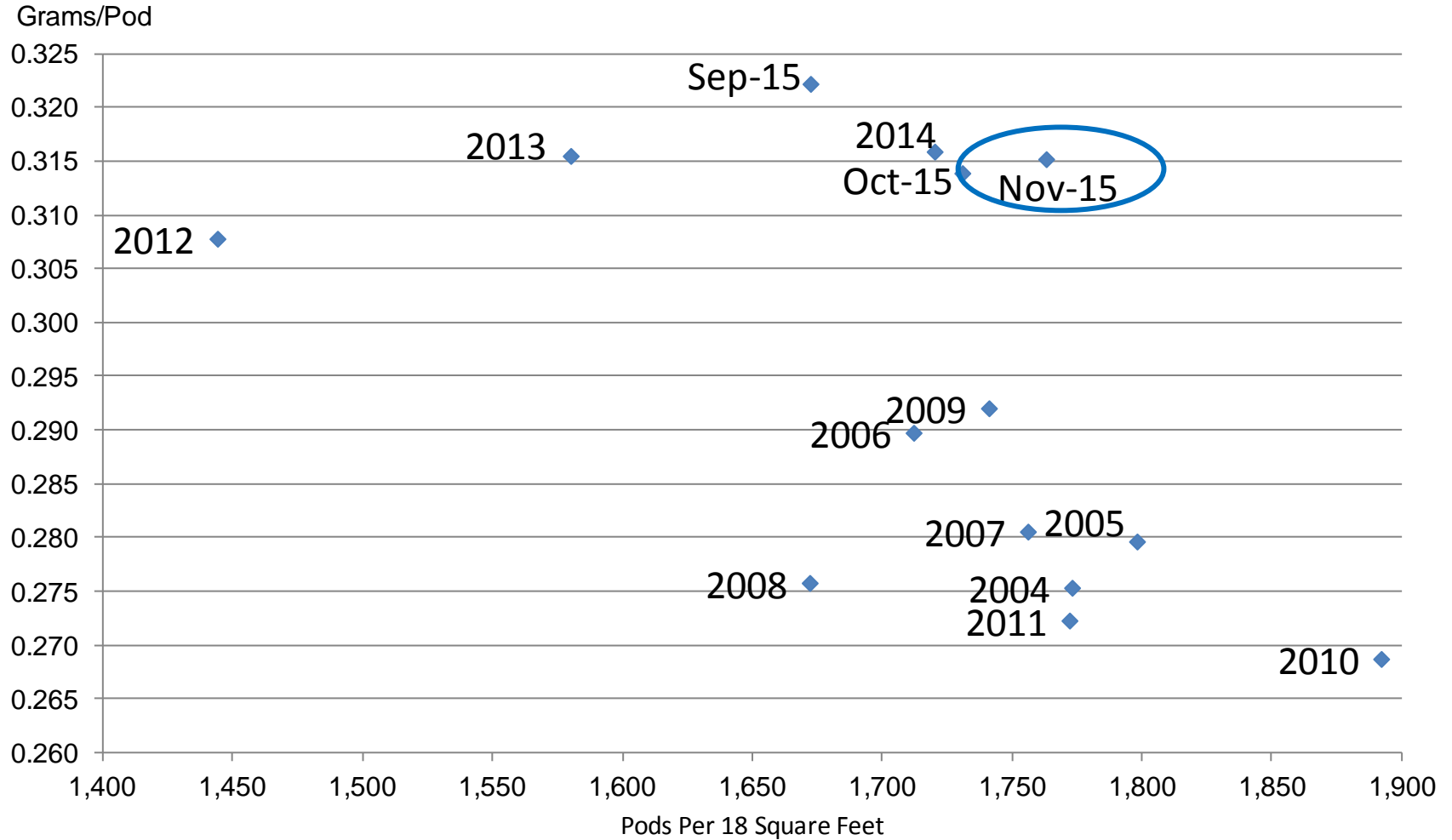


U.S. 48.3 #  
 1.1  
 # Record High  
 NC = No Change



# Soybean Objective Yield Region

## Pods Per 18 Square Feet vs. Implied Pod Weight



Implied Pod Weight = (Published Yield / Pods) / 0.0889



# Soybean Objective Yield - November

## Percent of Samples Processed in the Lab

Year	Mature
	<i>Percent</i>
2011	95
2012	94
2013	73
2014	92
2015	95





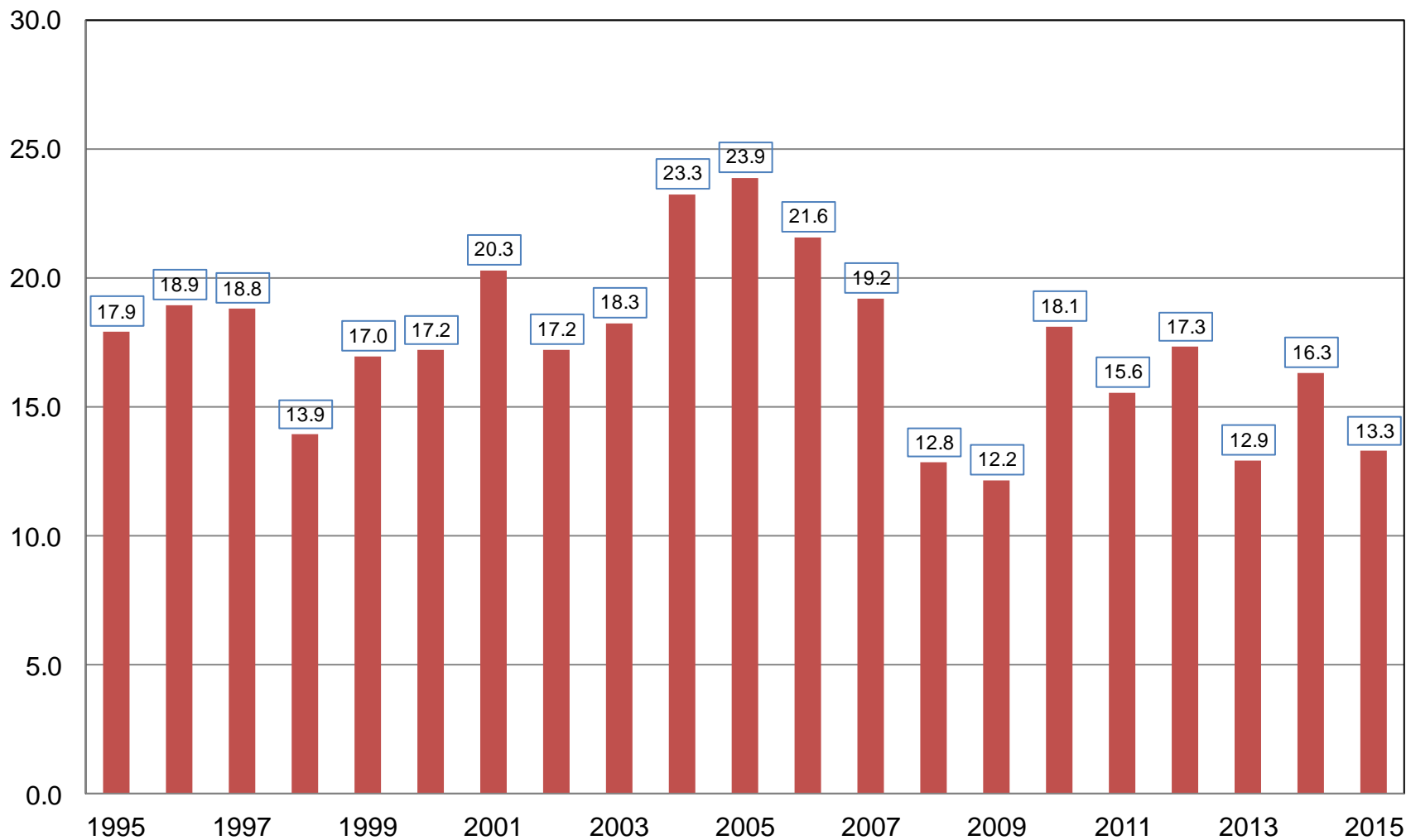
# November 2015 Crop Production

Crop	Unit	November 2015	% Change From Previous Forecast	% Change From Previous Season
All Cotton				
Harvested	Mil Ac	8.15	-0.2	-12.8
Yield	Lb/Ac	782	-0.3	-6.7
Production	Mil Bls	13.3	-0.4	-18.6



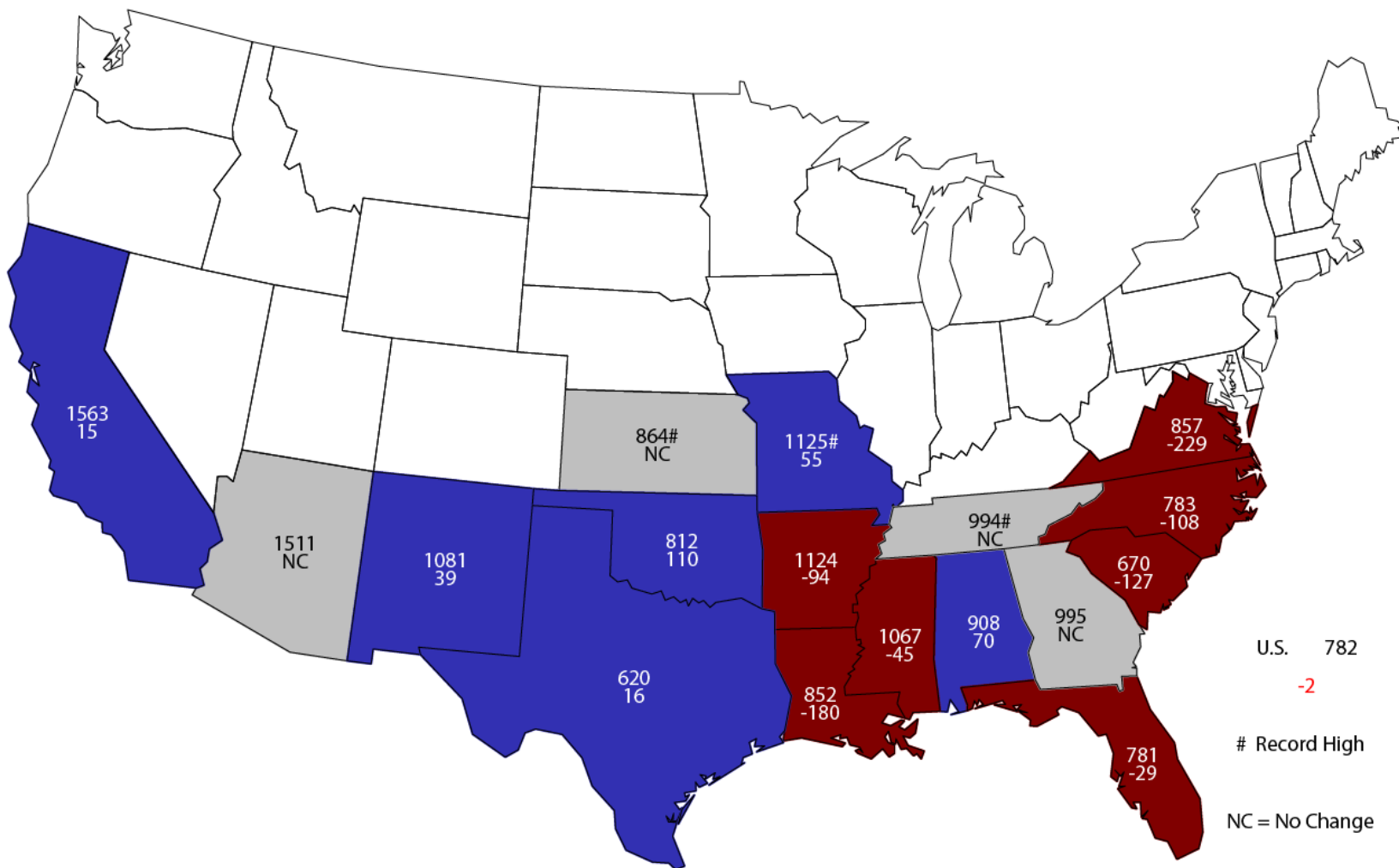
# All Cotton Production United States

Million Bales



# November 1, 2015 All Cotton Yield

## Pounds and Change From Previous Month



U.S. 782

-2

# Record High

NC = No Change



# November 2015 Crop Production

Crop	Unit	November 2015	% Change From Previous Forecast	% Change From Previous Season
Rice				
Harvested	Mil Ac	2.57	NC	-12.0
Yield	Lbs/Ac	7,423	+1.6	-2.0
Production	Mil Cwt	191	+1.6	-13.7



# November 2015 Crop Production

Crop	Unit	November 2015	% Change From Previous Forecast	% Change From Previous Season
Peanuts				
Harvested	Mil Ac	1.57	-0.5	+19.0
Yield	Lbs/Ac	3,922	-1.9	-<0.1
Production	Bil Lbs	6.17	-2.4	+19.0



# November 2015 Crop Production

Crop	Unit	November 2015	% Change From Previous Forecast	% Change From Previous Season
Sorghum				
Harvested	Mil Ac	7.65	NC	+19.4
Yield	Bu/Ac	77.7	+3.6	+14.9
Production	Mil Bu	594	+3.5	+37.3



# November 2015 Crop Production

Crop	Unit	November 2015	% Change From Previous Forecast	% Change From Previous Season
Production				
Sugarcane	Mil Tons	31.7	+1.3	+4.3
Sugarbeets	Mil Tons	35.2	+1.3	+12.3



# November 2015 Crop Production

Crop	Unit	November 2015	% Change From Previous Forecast	% Change From Previous Year
Production				
Cottonseed	Mil Tons	4.26	-0.4	-16.9
Fall Potatoes	Mil Cwt	409	NA	+1.2





# November 2015 Crop Production

Crop	Unit	November 2015	% Change From Previous Forecast	% Change From Previous Season
Production				
A. Winter Peas	Thou Cwt	274	NA	+21.8
Dry Edible Peas	Mil Cwt	19.6	NA	+14.0
Lentils	Mil Cwt	5.32	NA	+58.1



# Upcoming Reports

Release Date	Report Title
November 19	Farm Labor
November 20	Cattle on Feed
November 30	Agricultural Prices
December 1	CAIR: Cotton CAIR: Oilseed Crushing CAIR: Fats & Oils
December 10	Crop Production



United States Department of Agriculture  
**National Agricultural Statistics Service**

---

---

**All Reports Available At**  
[www.nass.usda.gov](http://www.nass.usda.gov)

**For Questions**  
202-720-2127  
800-727-9540  
[nass@nass.usda.gov](mailto:nass@nass.usda.gov)