



United States Department of Agriculture
National Agricultural Statistics Service



Hogs & Pigs Inventory
March 25, 2016

Executive Briefing



Survey Overview



December Hogs & Pigs

Data Collection Period

February 29 – March 15

Sample Size

8,147

Collection Methods

Mail, Telephone, Internet, Face-to-Face Interview

Primary Data Items

Total Inventory: by class, weight group, and quarter
sows farrowing, pig crop, and pigs per litter



U.S. Hogs and Pigs Revisions



Survey	Item	Initial Estimate (1,000 head)	Previous Revision (1,000 head)	Current Revision (1,000 head)	Net Revision (1,000 head)	Current Estimate (1,000 head)
June 1, 2015	All Hogs and Pigs	66,900	+165 +0.2%	+100 +0.1%	+265 +0.4%	67,165
September 1, 2015	All Hogs and Pigs	68,395	-220 -0.3%	+1,010 +1.5%	+790 +1.2%	69,185
	Pig Crop	30,585	+3 +0.01%	+755 +2.5%	+758 +2.5%	31,343
December 1, 2015	All Hogs and Pigs	68,299		+90 +0.1%		68,389



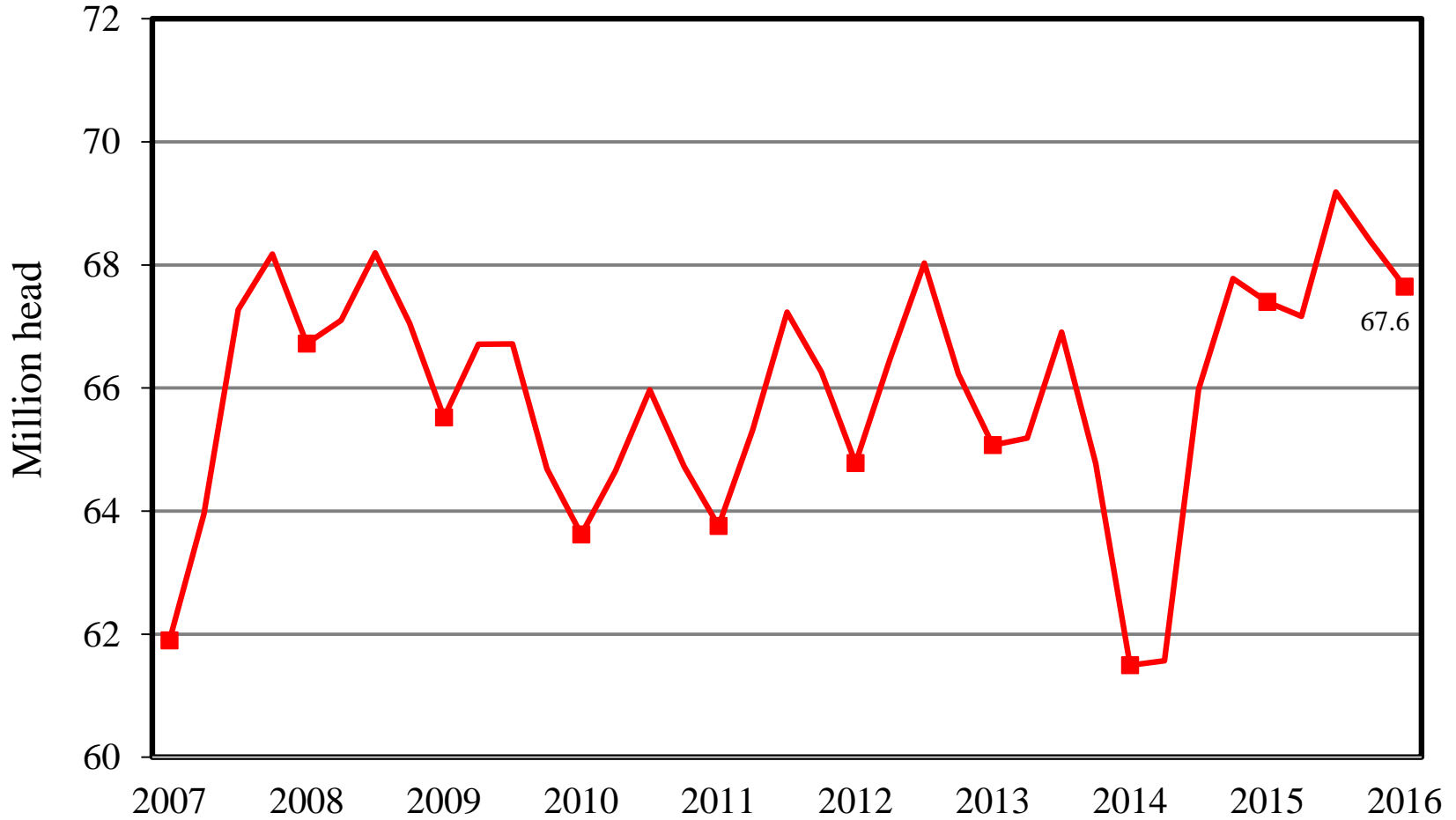
U.S. Hogs & Pigs March 1



Items	2015	2016	% PY
	1,000 head		
All Hogs & Pigs	67,399	67,644	100
Breeding Hogs	5,982	5,980	100
Market Hogs	61,418	61,664	100
180 lbs & over	11,255	11,274	100
120-179 lbs	13,580	13,744	101
50-119 lbs	17,129	17,263	101
less than 50 lbs	19,454	19,382	100
Sows Farrowed	2,895	2,873	99
Pig Crop	29,627	29,582	100
	number		
Pigs per Litter	10.23	10.30	101
	1,000 head		
Mar-May Farrowings	2,854	2,839	99
Jun-Aug Farrowings	3,017	2,912	97

U.S. Quarterly Hogs & Pigs

2007 - 2016





NASS Estimates Compared to Trade Expectations Percent of Previous Year

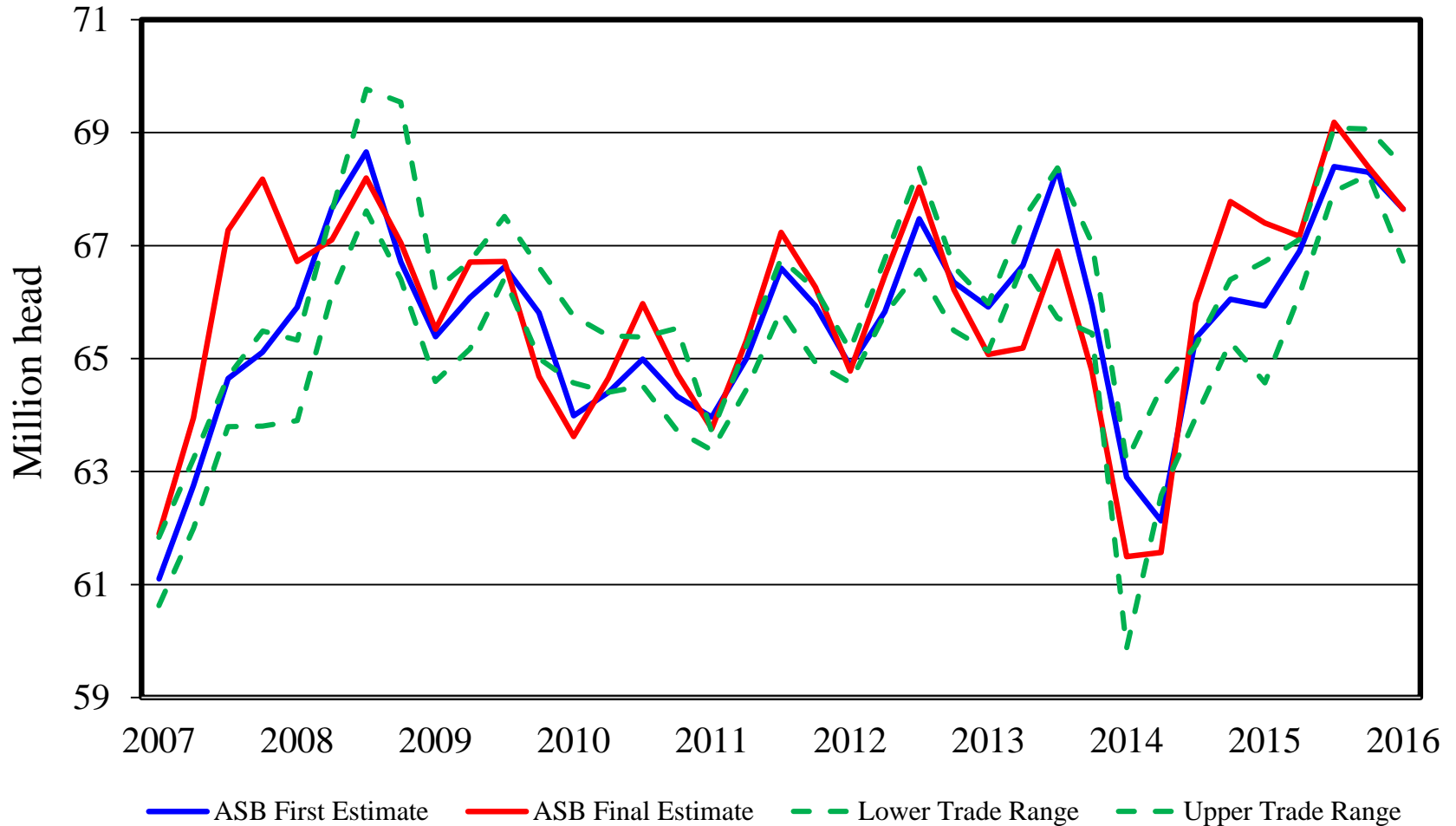


Inventory Items	NASS Estimate	Trade Average	Trade Range
All Hogs & Pigs	100.4%	100.3%	99.0% – 101.5%
Breeding Hogs	100.0%	100.6%	100.0% – 101.0%
Market Hogs	100.4%	100.3%	99.0% – 101.5%
Dec – Feb Pig Crop	99.9%	100.1%	99.0% – 101.4%
Farrowing Intentions			
Mar – May 2016	99.5%	100.1%	99.9% – 100.4%
Jun – Aug 2016	96.5%	100.3%	98.0% – 101.7%

All Hogs and Pigs

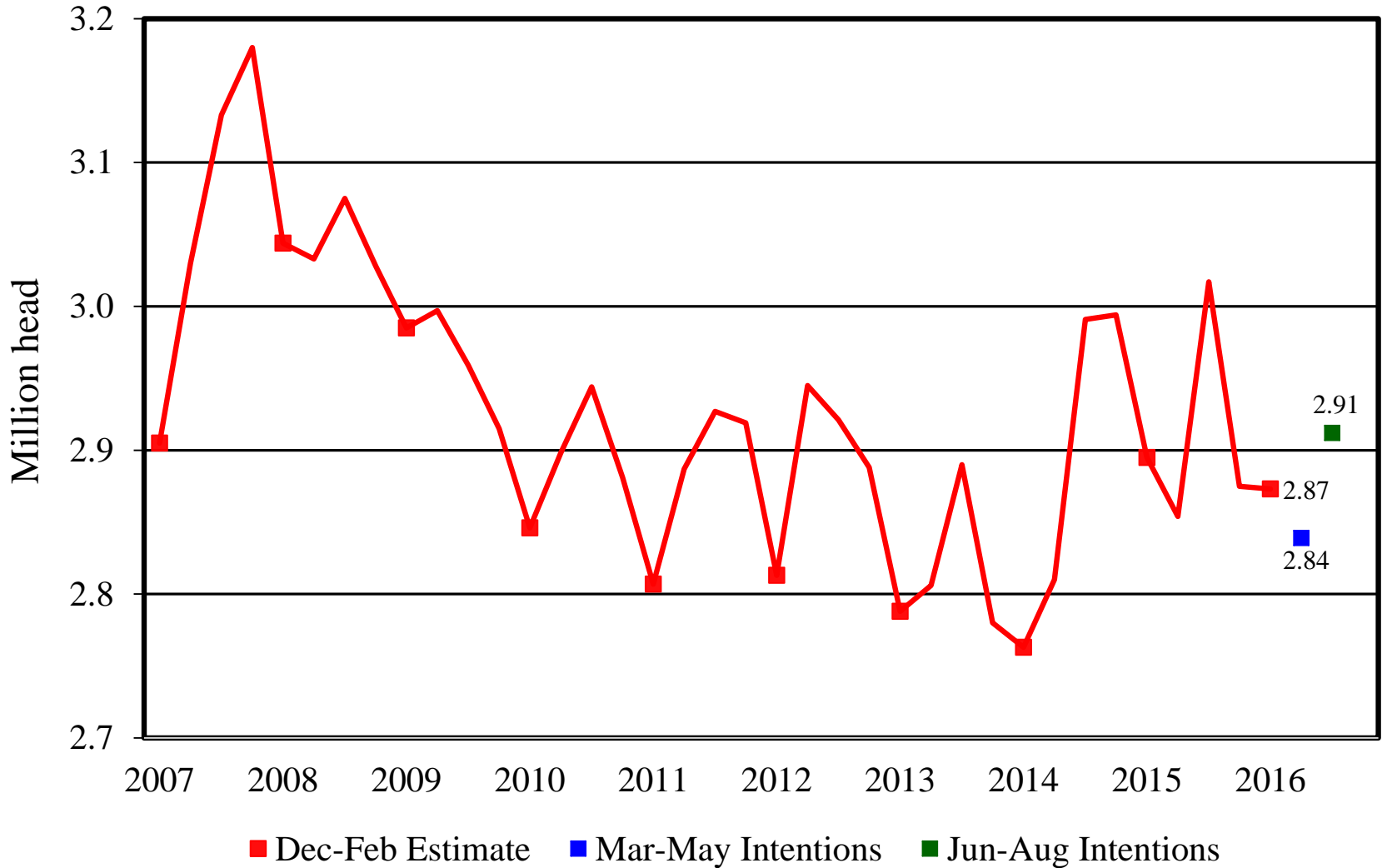
First Estimate Versus Final Estimate

2007 - 2016



U.S. Quarterly Sows Farrowed

2007-2016





Breeding Herd Inventory

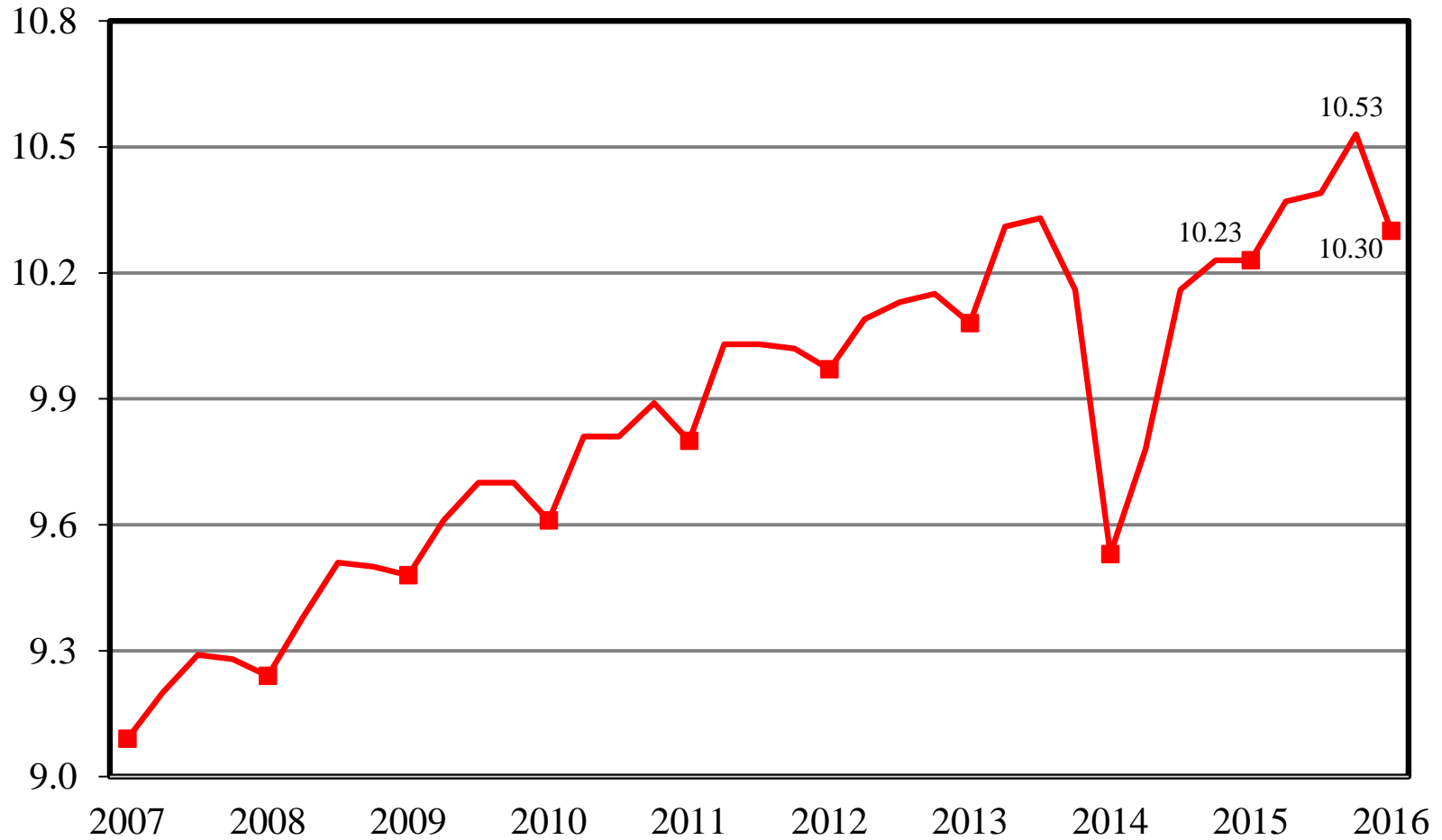
Disposition & Utilization



Year	Dec 1 Estimate (1,000 head)	Slaughter (1,000 head)	Additions (1,000 head)	Mar 1 Estimate (1,000 head)	Sow Utilization (Percent)
2007	6,116	913	946	6,149	47
2008	6,233	953	920	6,200	49
2009	6,062	877	807	5,992	49
2010	5,850	846	756	5,760	49
2011	5,778	792	802	5,788	49
2012	5,803	823	840	5,820	48
2013	5,819	805	819	5,834	48
2014	5,757	779	873	5,851	48
2015	5,939	792	835	5,982	49
2016	6,002	782	760	5,980	48

U.S. Quarterly Pigs per Litter

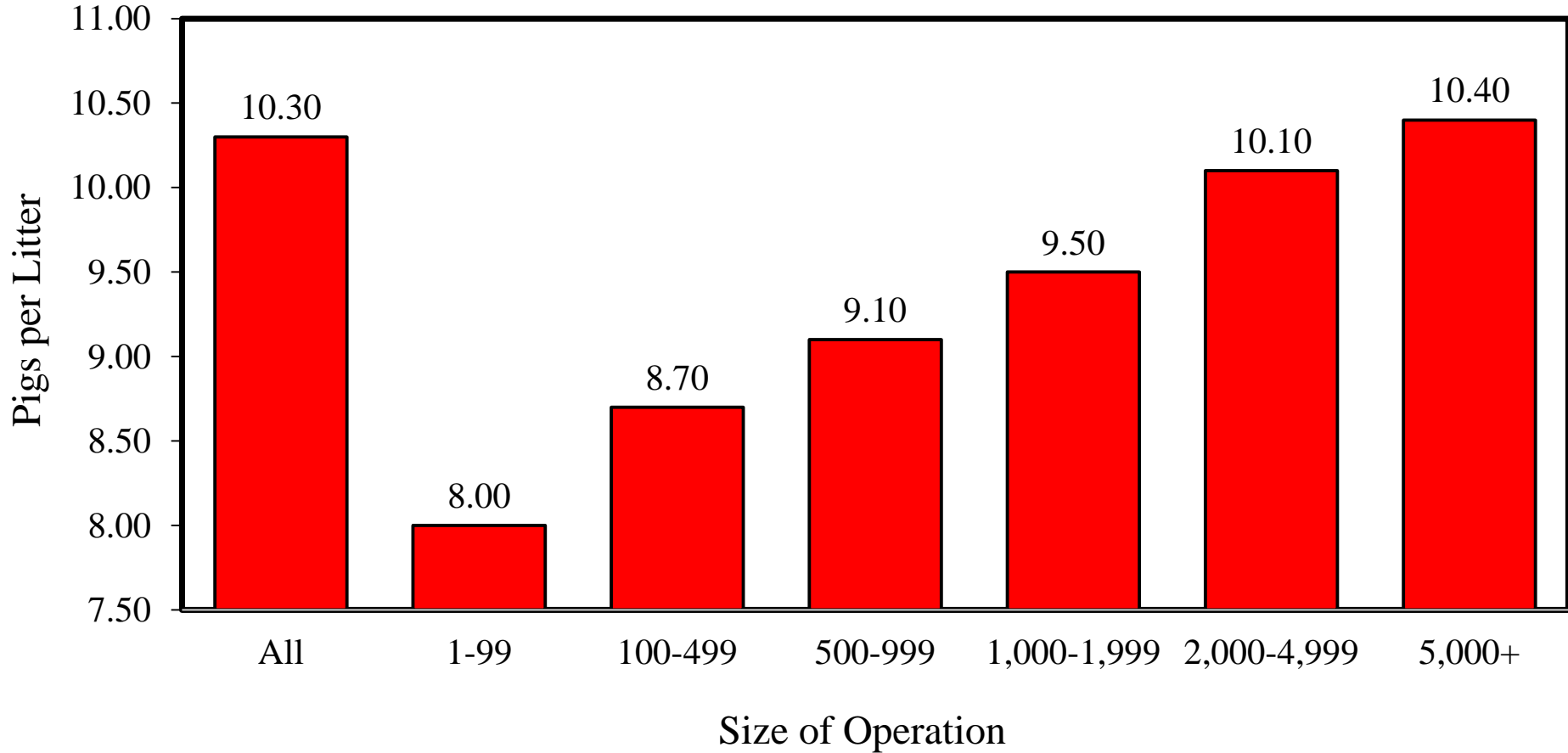
2007-2016



USDA U.S. Pigs per Litter by Size of Operation

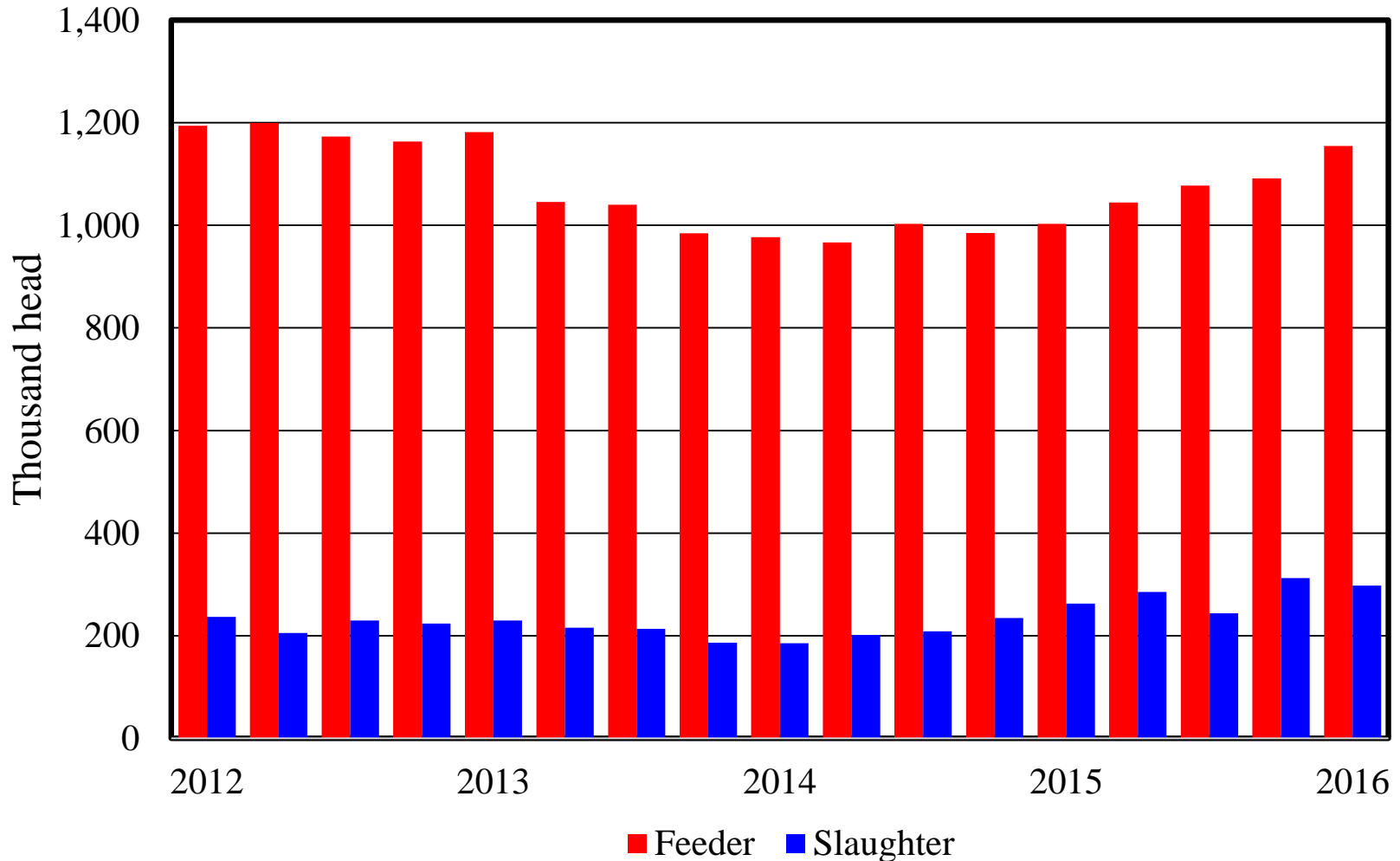


December 2015 - February 2016

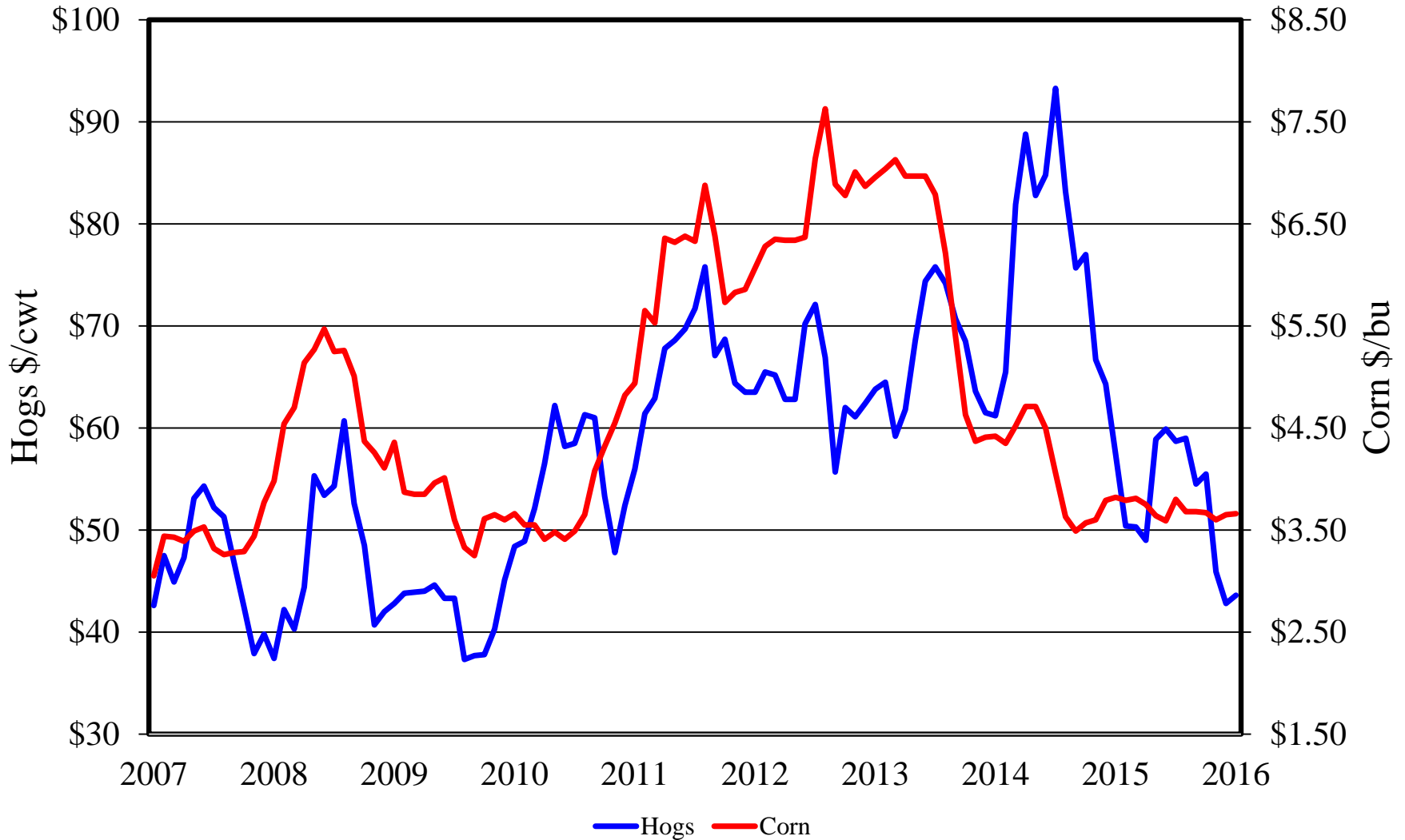


Canadian Imports by Quarter

Feeder Pigs and Slaughter Hogs



U.S. Prices Received by Farmers for Hogs & Corn





Upcoming NASS Reports



Release Date	Report Title
March 30	Agricultural Prices
March 31	Grain Stocks Rice Stocks Prospective Plantings
April 1	Cotton System, Fats & Oils, Grain Crushings
April 12	Crop Production
April 20	Milk Production Livestock Slaughter - Annual
April 22	Cattle on Feed
April 28	Poultry – Production and Value Production, Disposition, & Income: Meat Animals, Milk Annual Dairy Products



United States Department of Agriculture
National Agricultural Statistics Service



All Reports Available At
www.nass.usda.gov

For Questions
(202) 720-3570
(800) 727-9540
nass@nass.usda.gov