



United States Department of Agriculture
National Agricultural Statistics Service

Acreage
Grain Stocks
Rice Stocks

Executive Summary

Lance Honig, Chief
Crops Branch

June 30, 2016

12:00 P.M.



Contents

Field Crops	Stocks
Planted Acres	Corn
Harvested Acres	Soybeans
	Sorghum
	Rice
	All Wheat
	Barley
	Oats
	Dry Peas
	A. Winter Peas
	Chickpeas

Survey Overview

	June APS	June Area	Off-Farm Grain Stock Survey
Survey Type	Farmer Reported	Farmer Reported	Reported
Collection Method	Mail, Phone, Internet, Personal Interview	Personal Interview	Mail, Phone, Internet, Personal Interview
Crops Included	Field Crops	Field Crops	Grain and Oilseed On Hand
States	All except HI	All except AK and HI	All Except AK, HI, and NV
Sample Size	70,470 farms	10,975 segments	~ 8,600
Collection Period	May 26 – June 16	May 28 – June 15	May 28 – June 16



Principal Crops Planted Acreage

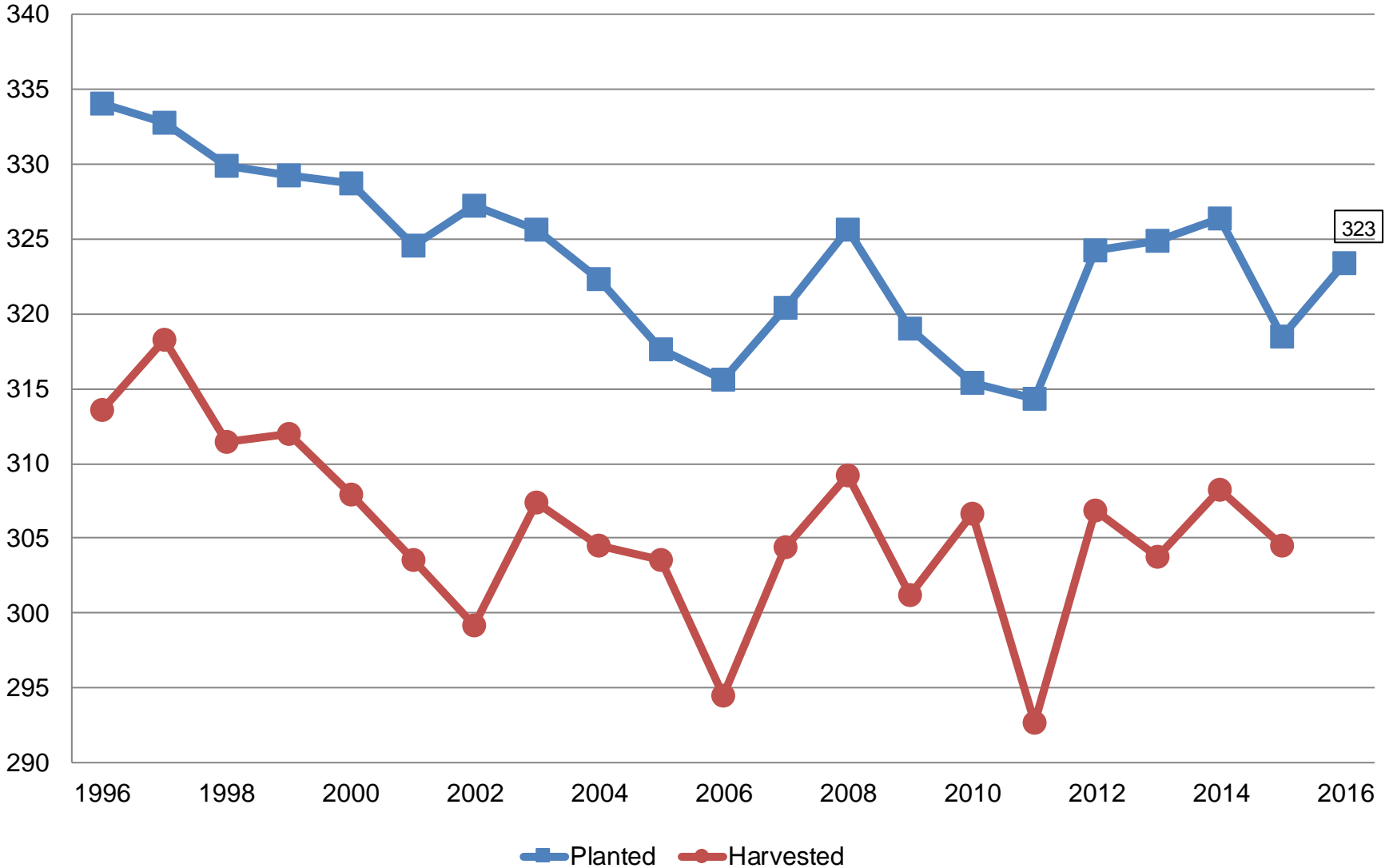
United States

Year	Principal Crops	Change From Previous Year
	<i>Million Acres</i>	
2007	320.4	+4.7
2008	325.6	+5.3
2009	319.0	-6.6
2010	315.4	-3.6
2011	314.3	-1.1
2012	324.3	+10.0
2013	324.9	+0.6
2014	326.4	+1.6
2015	318.5	-7.9
2016	323.4	+4.9



Principal Crops United States

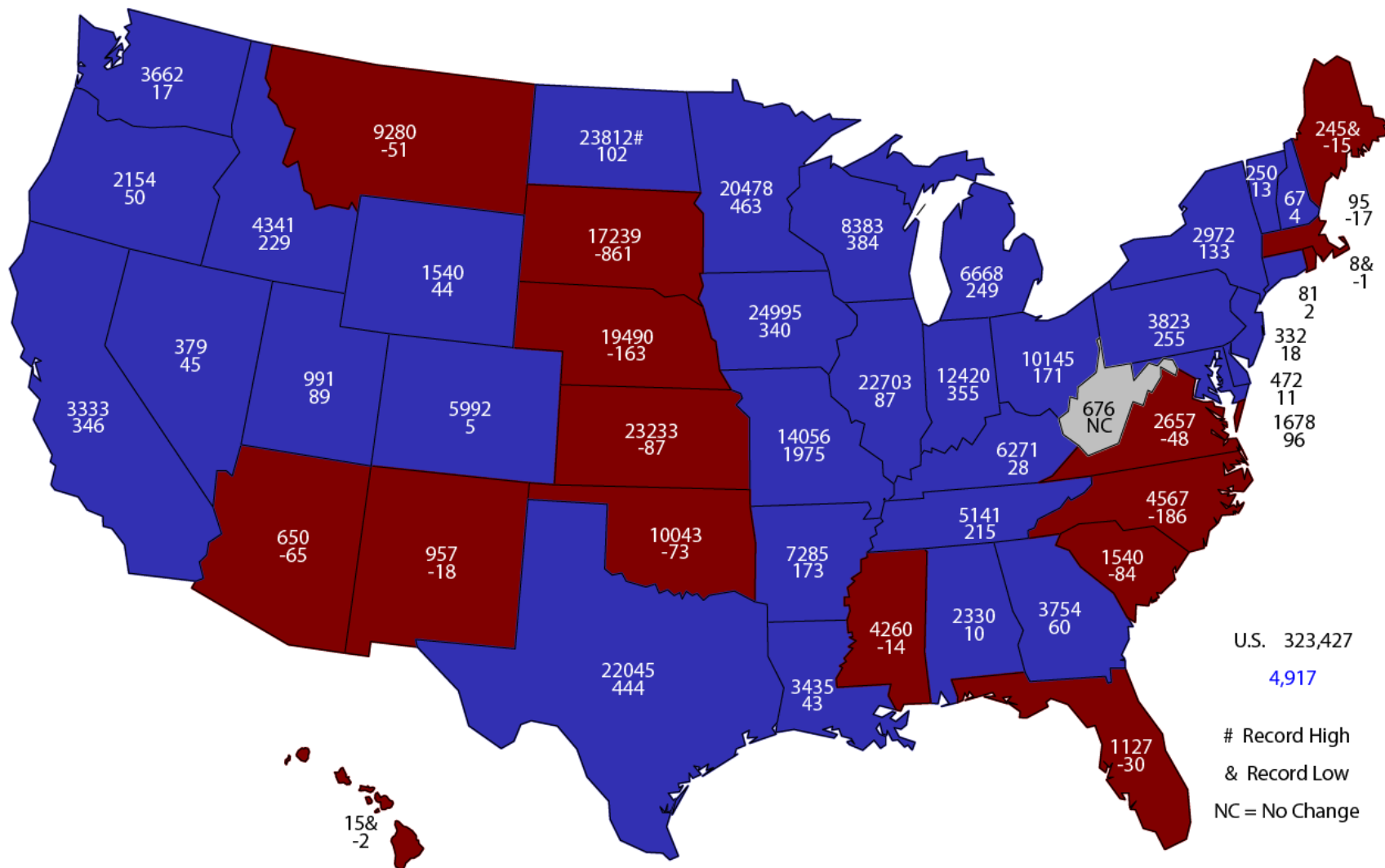
Million Acres



323

2016 Principal Crops Planted Area

(000) Acres and Change From Previous Year



U.S. 323,427
4,917
 # Record High
 & Record Low
 NC = No Change



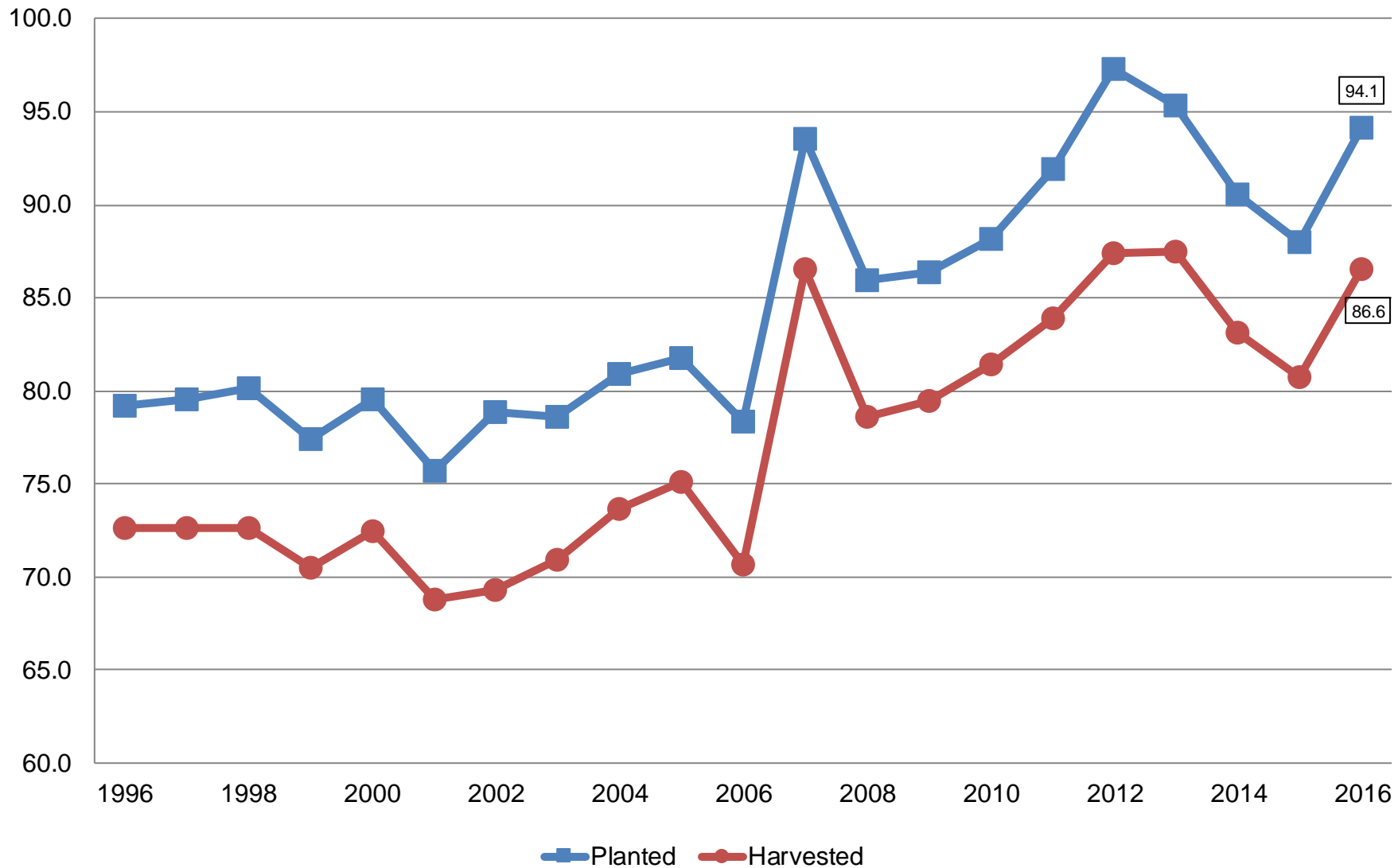
June 2016 Acreage

Crop	Unit	June 2016	% Change From Previous Estimate	% Change From Previous Season
Corn				
Planted	Mil Ac	94.1	+0.6	+7.0
Harvested	Mil Ac	86.6	NA	+7.2



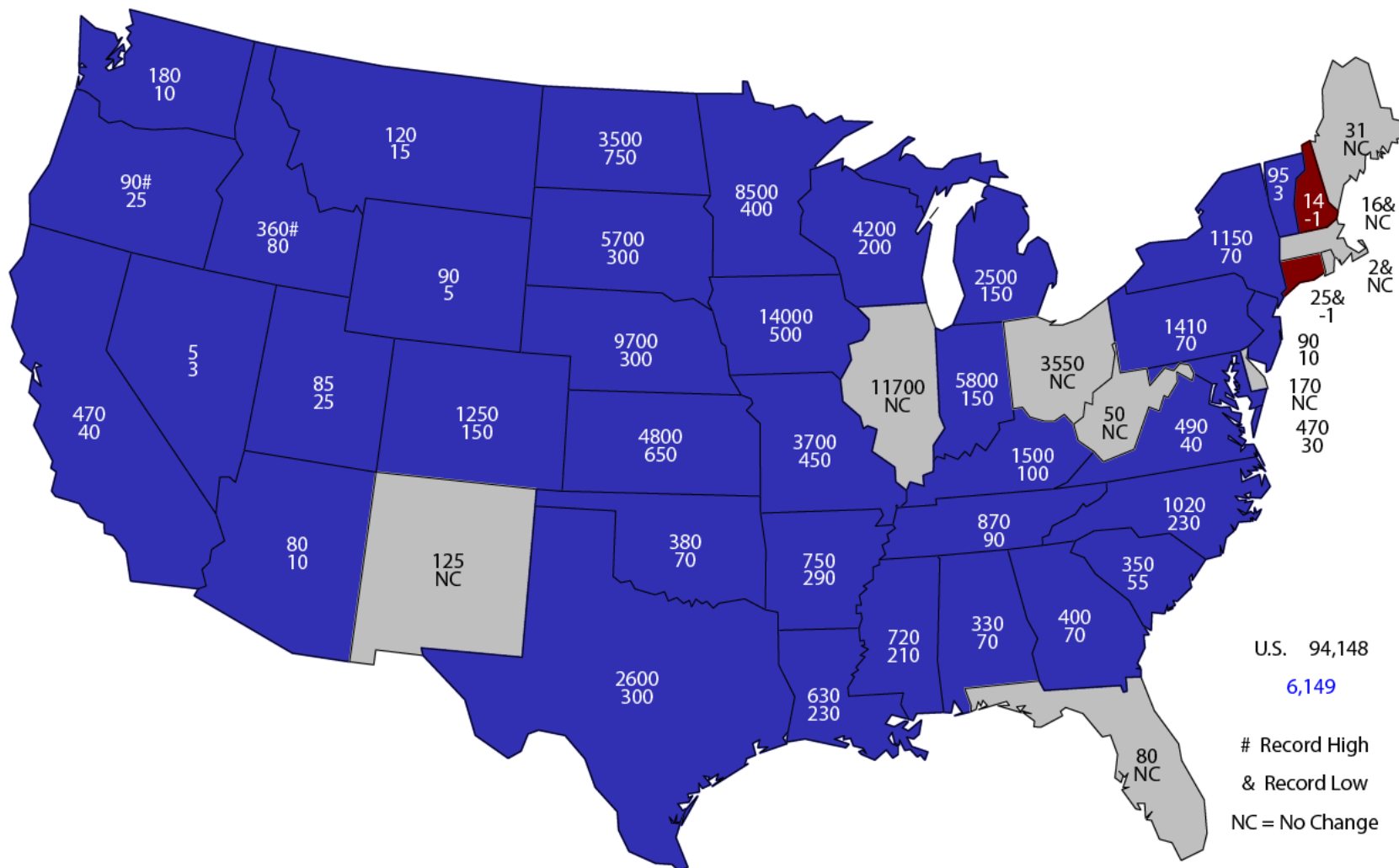
Corn Acres United States

Million Acres



2016 Corn Planted Area

(000) Acres and Change From Previous Year



U.S. 94,148
6,149
 # Record High
 & Record Low
 NC = No Change



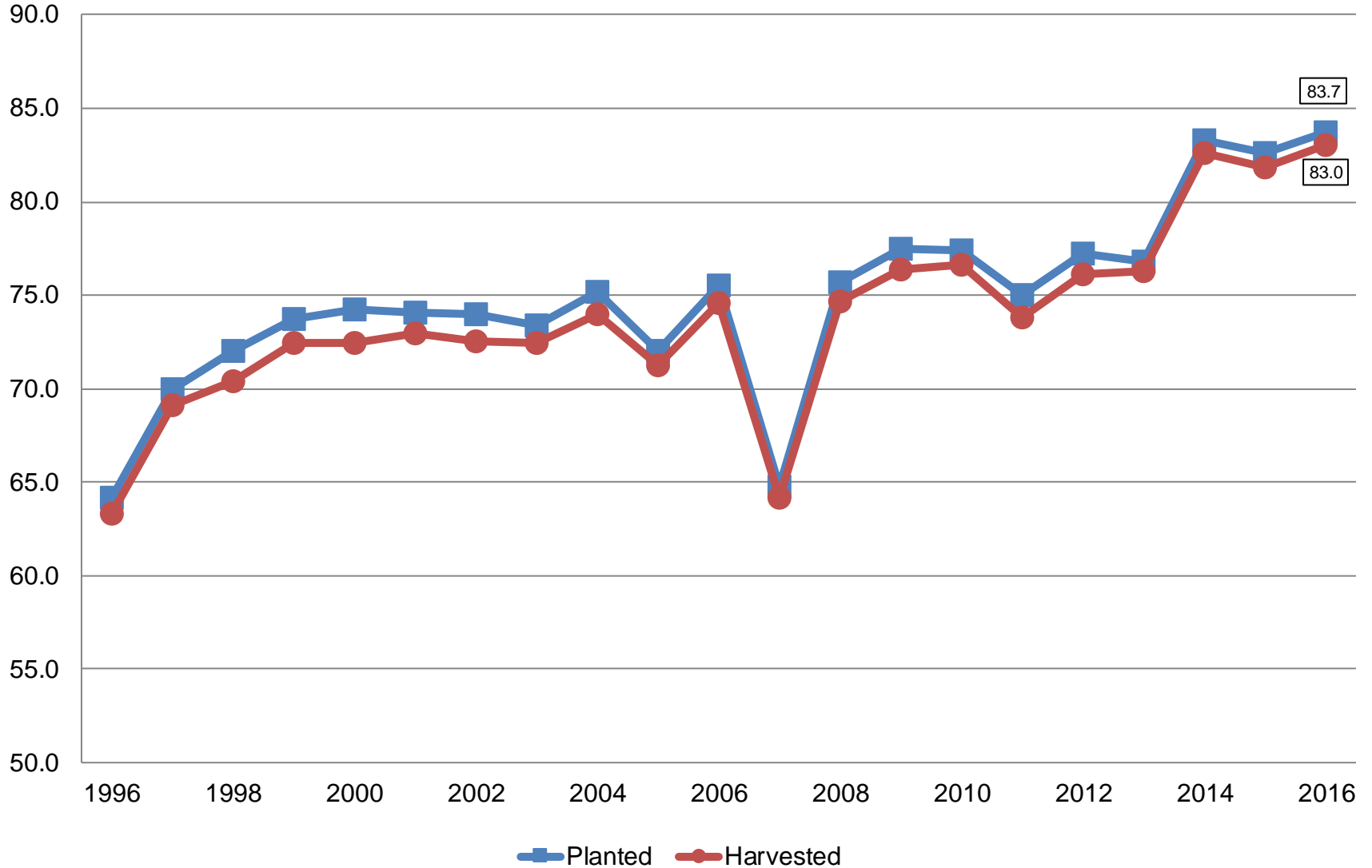
June 2016 Acreage

Crop	Unit	June 2016	% Change From Previous Estimate	% Change From Previous Season
Soybeans				
Planted	Mil Ac	83.7	+1.8	+1.3
Harvested	Mil Ac	83.0	NA	+1.5



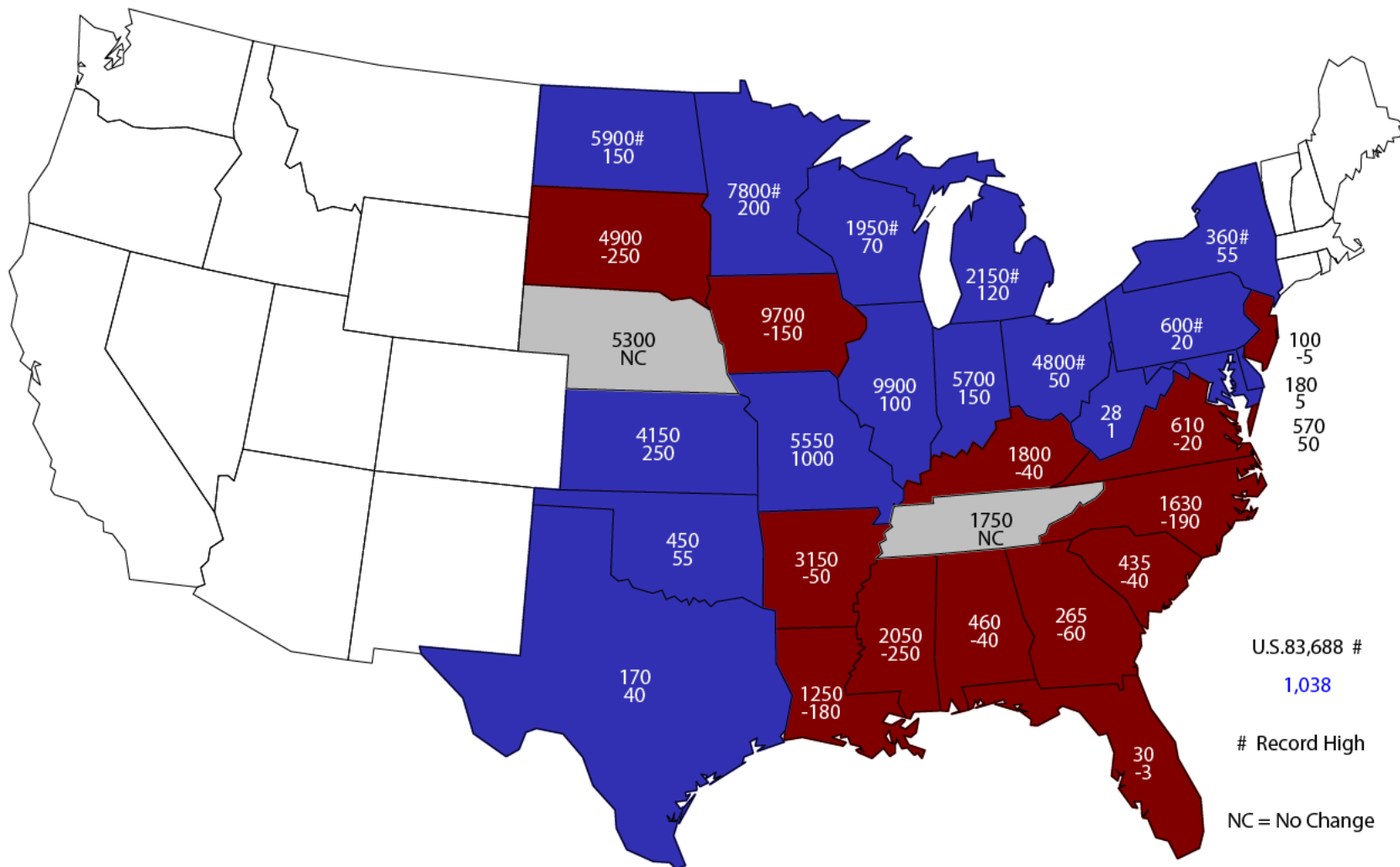
Soybean Acres United States

Million Acres



2016 Soybean Planted Area

(000) Acres and Change From Previous Year



U.S. 83,688 #

1,038

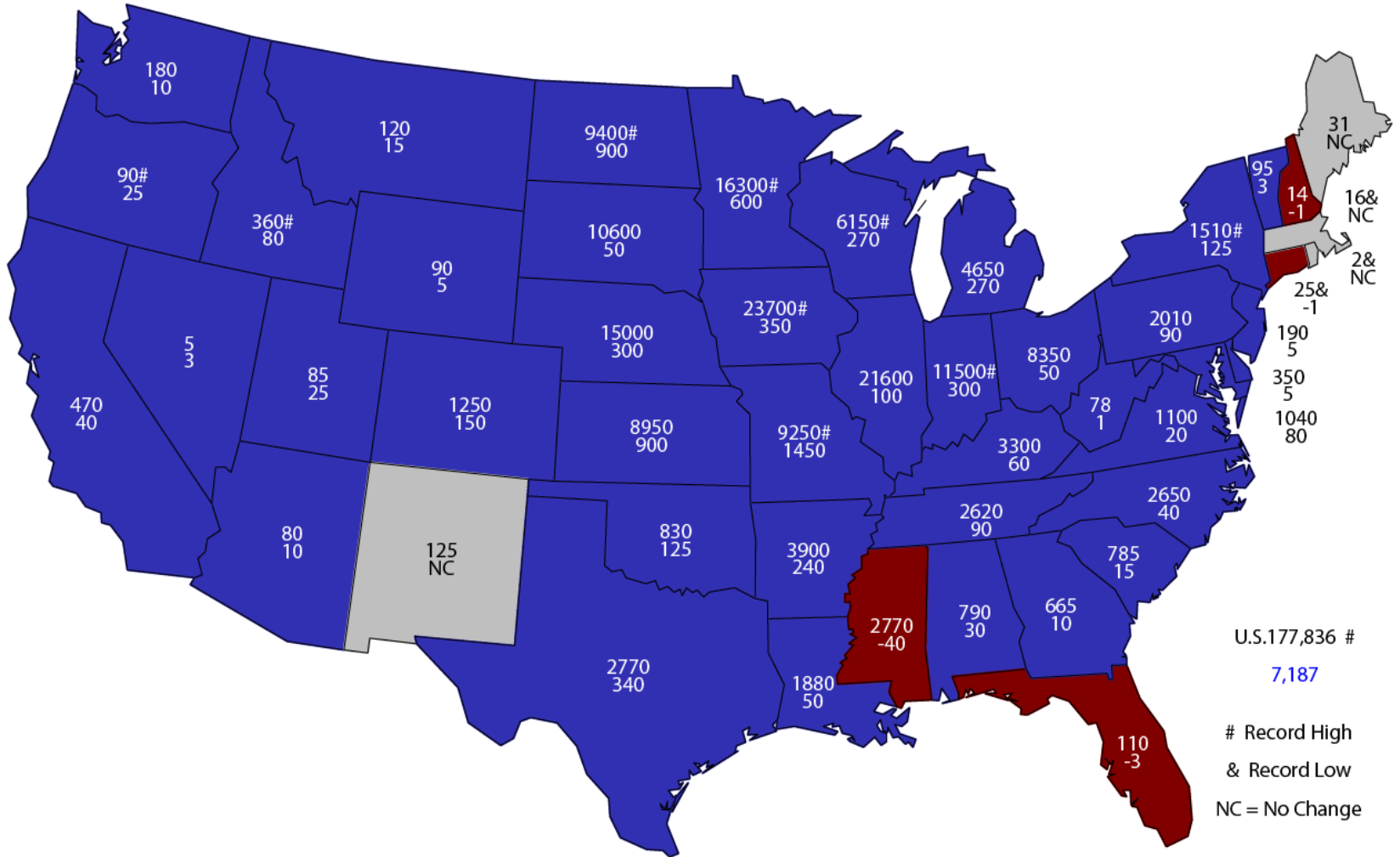
Record High

NC = No Change



2016 Combined Corn & Soybean Planted Area

(000) Acres and Change From Previous Year



U.S. 177,836 #
7,187

Record High
& Record Low
NC = No Change



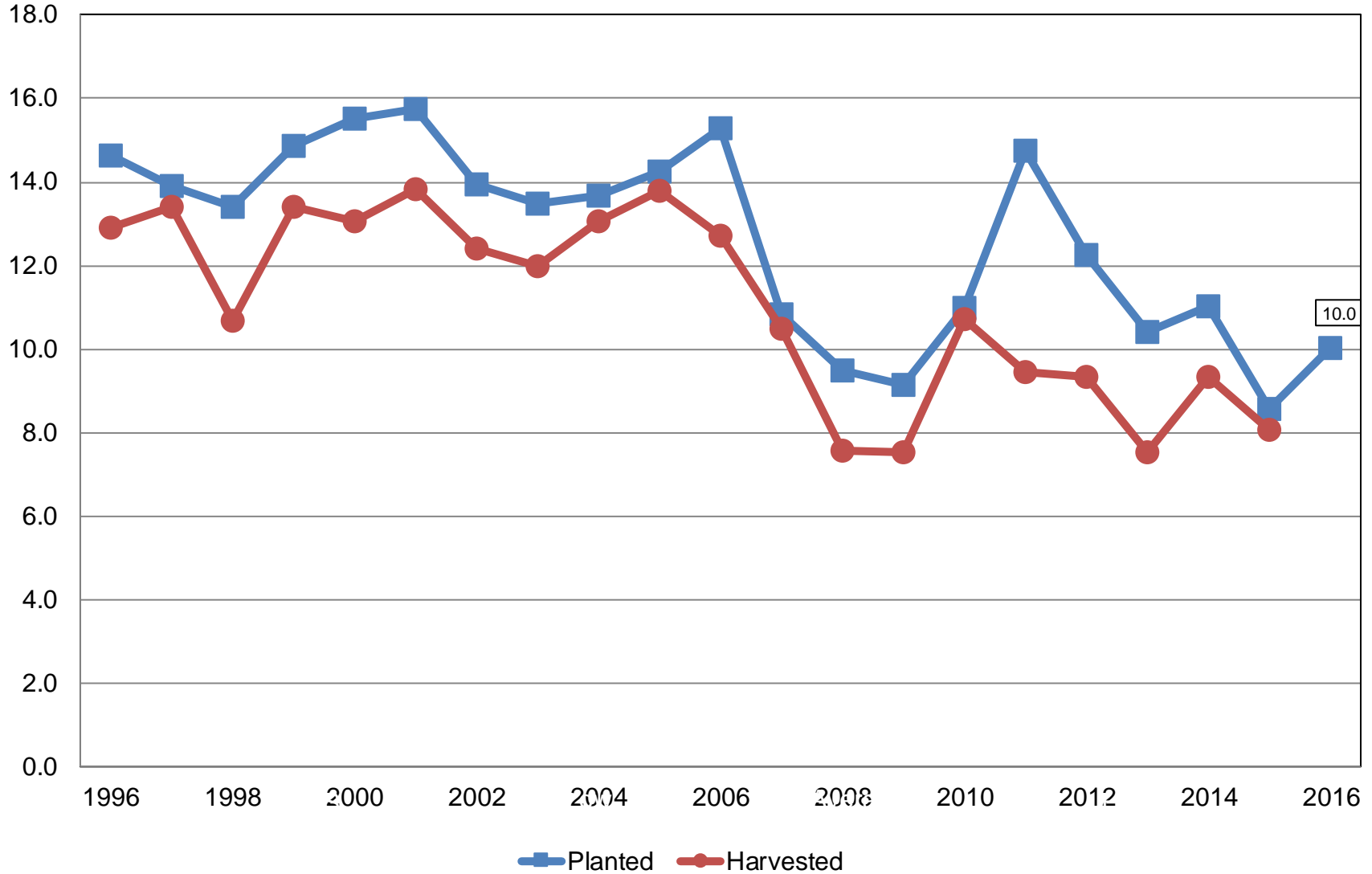
June 2016 Acreage

Crop	Unit	June 2016	% Change From Previous Estimate	% Change From Previous Season
All Cotton				
Planted	Mil Ac	10.0	+4.8	+16.8
Upland Cotton				
Planted	Mil Ac	9.82	+5.1	+16.6
Pima Cotton				
Planted	Thou Ac	199	-7.4	+25.6



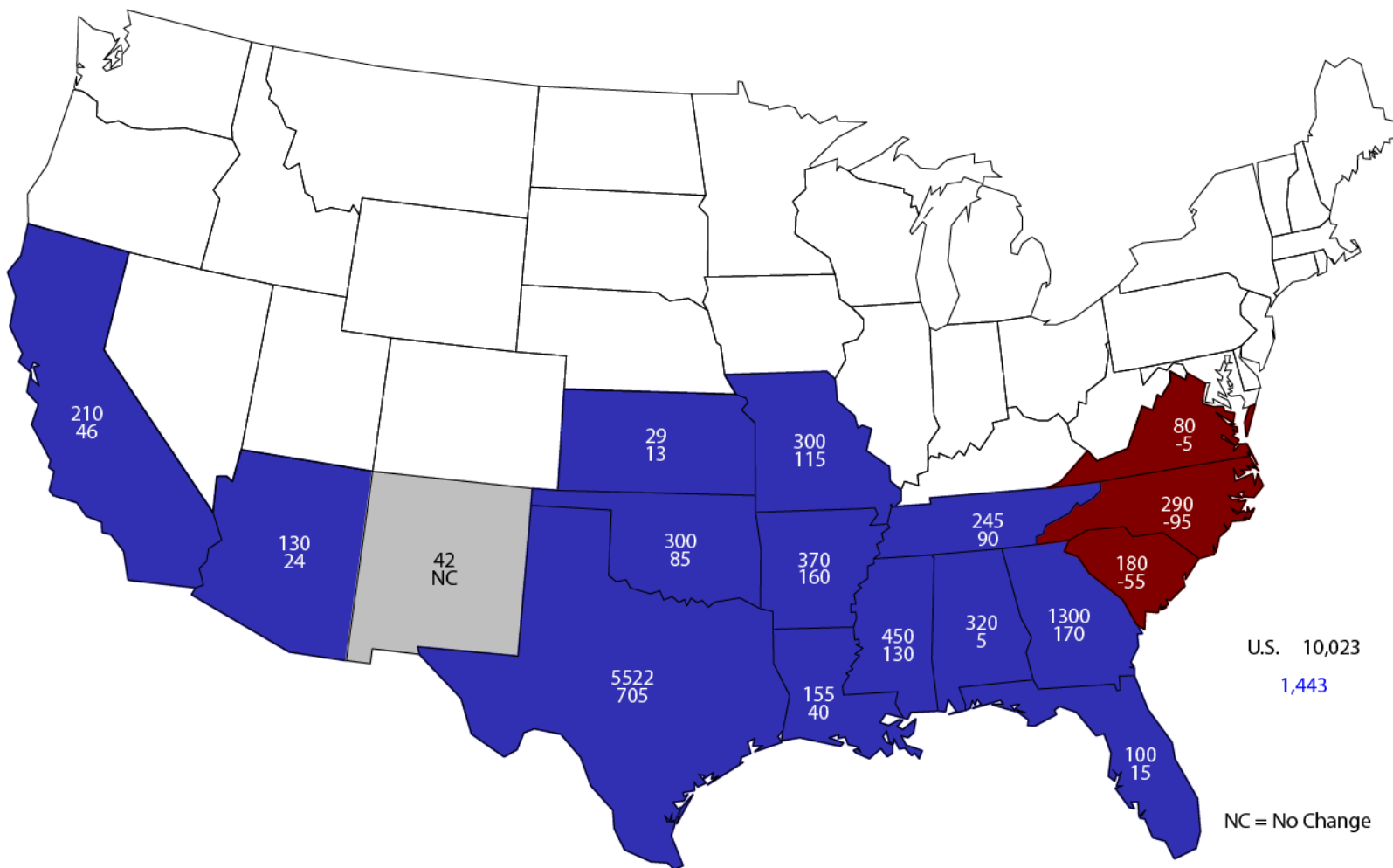
All Cotton Acres United States

Million Acres



2016 All Cotton Planted Area

Acres (000) and Change From Previous Year



U.S. 10,023
1,443

NC = No Change



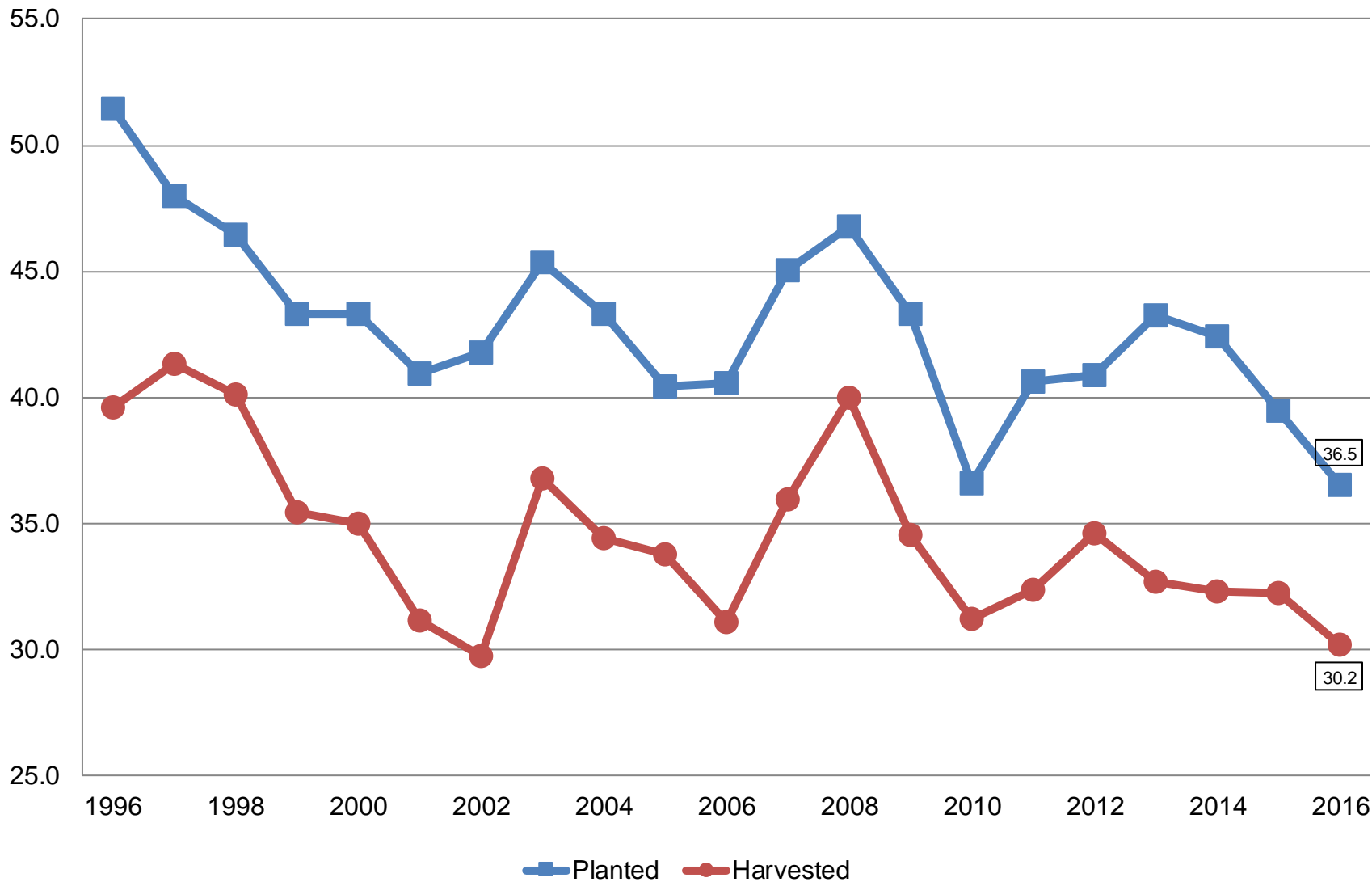
June 2016 Acreage

Crop	Unit	June 2016	% Change From Previous Estimate	% Change From Previous Season
Winter Wheat				
Planted	Mil Ac	36.5	+0.9	-7.4
Harvested	Mil Ac	30.2	+1.2	-6.5
Spring Wheat				
Planted	Mil Ac	12.1	+6.9	-8.4
Harvested	Mil Ac	11.8	NA	-8.5
Durum Wheat				
Planted	Mil Ac	2.15	+7.5	+10.8
Harvested	Mil Ac	2.08	NA	+9.8
All Wheat				
Planted	Mil Ac	50.8	+2.5	-7.0
Harvested	Mil Ac	44.1	NA	-6.4



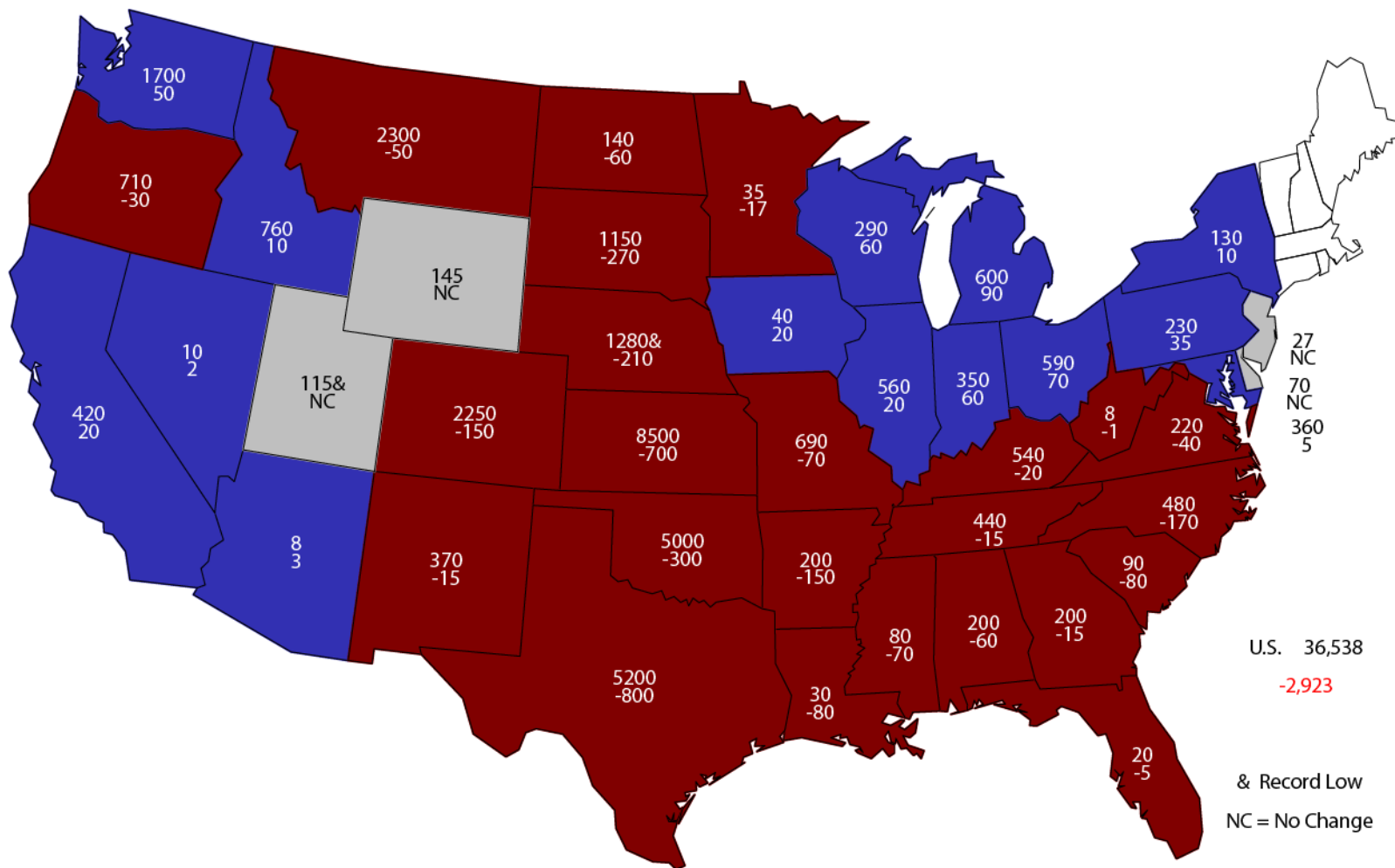
Winter Wheat Acres United States

Million Acres



2016 Winter Wheat Planted Area

(000) Acres and Change From Previous Year



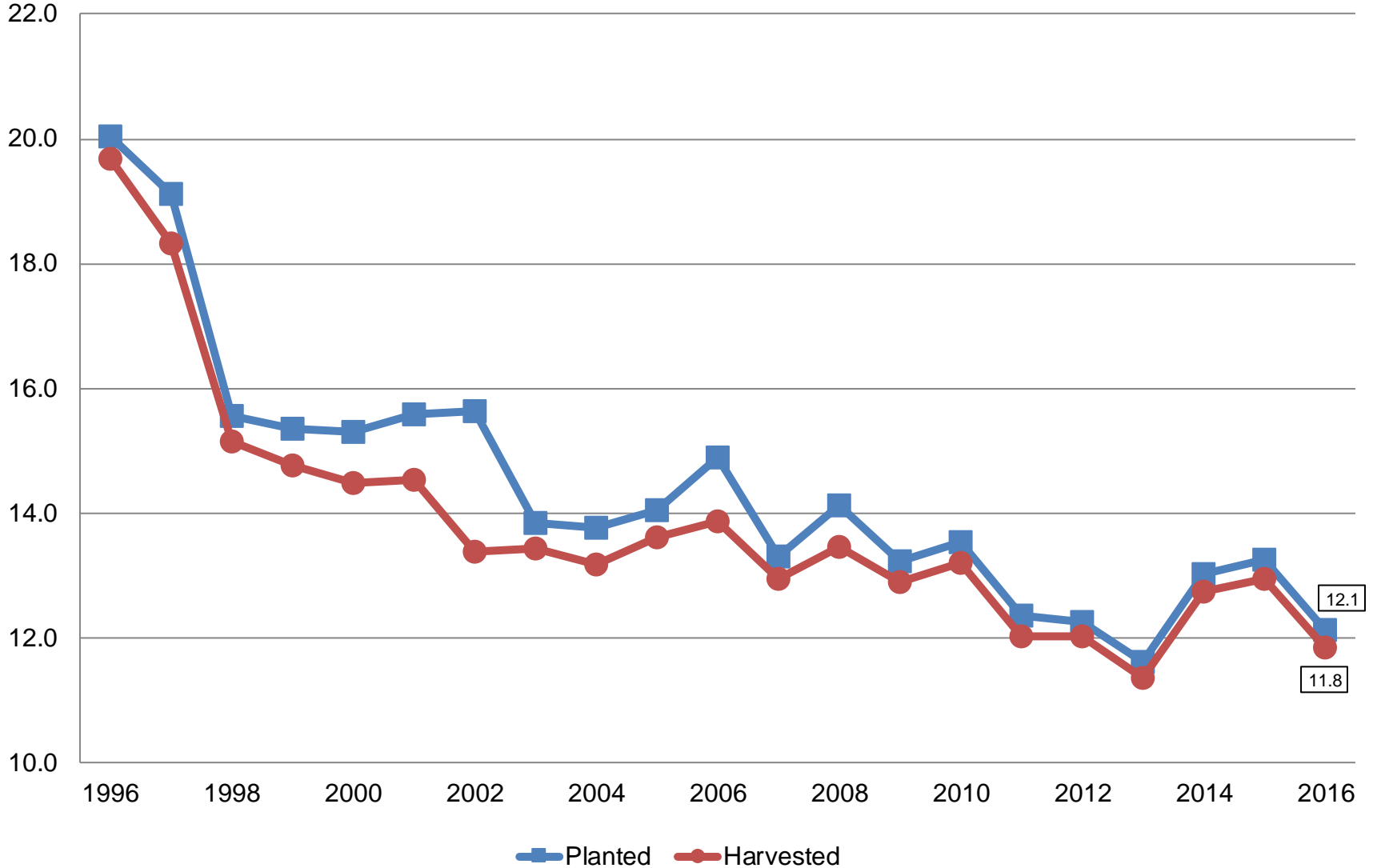
U.S. 36,538
-2,923

& Record Low
NC = No Change



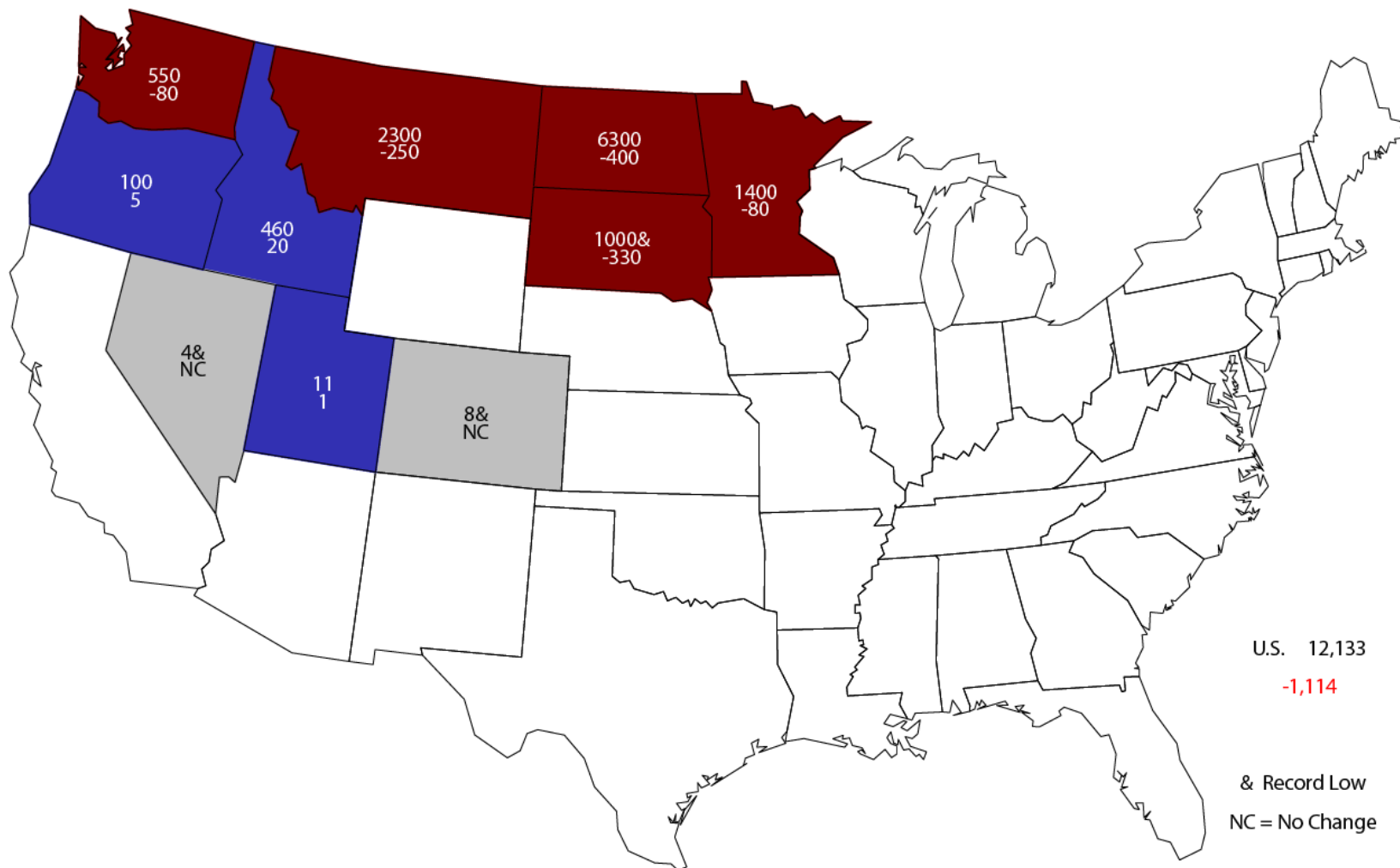
Other Spring Wheat Acres United States

Million Acres



2016 Other Spring Wheat Planted Area

(000) Acres and Change From Previous Year



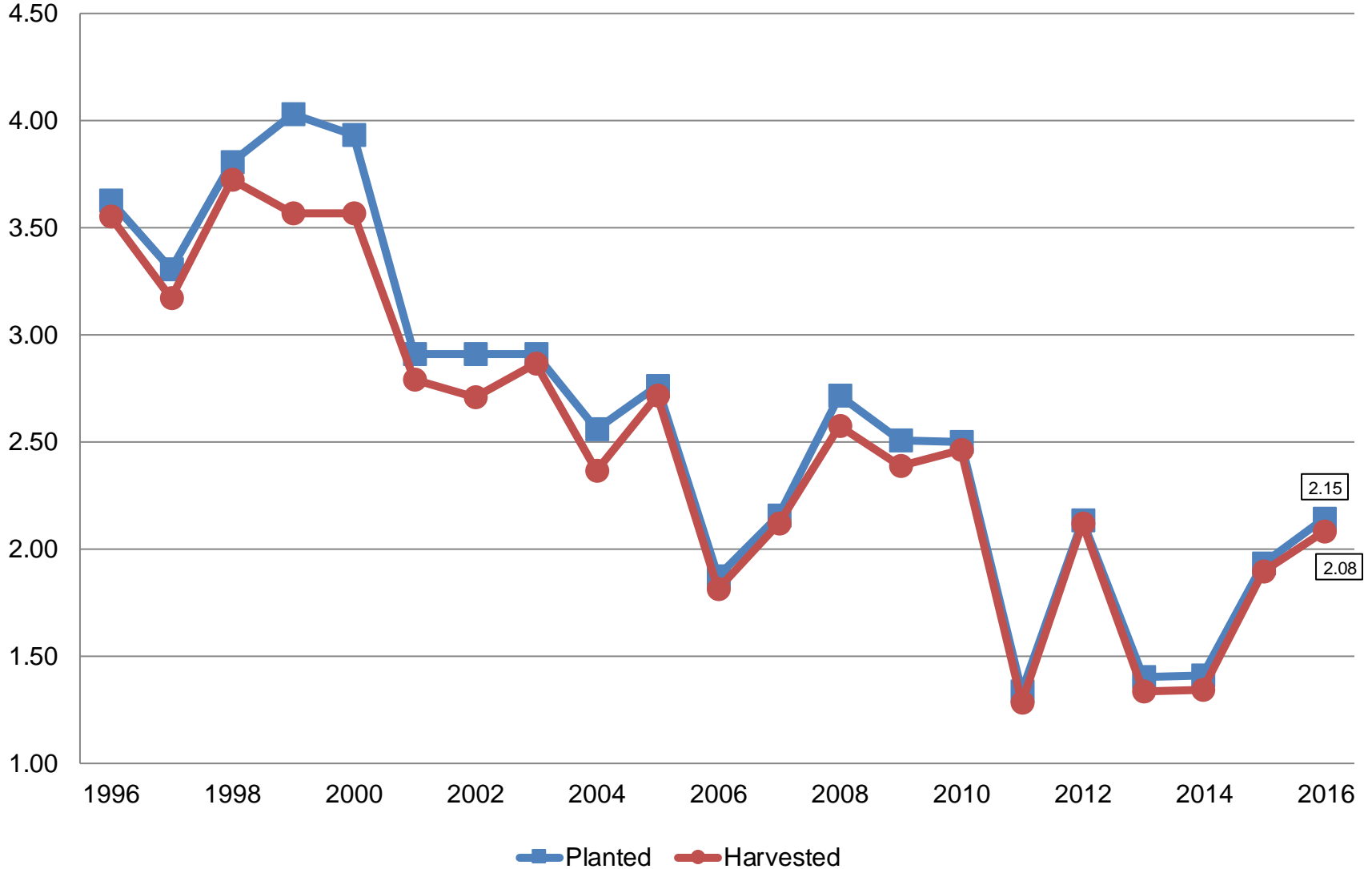
U.S. 12,133
-1,114

& Record Low
NC = No Change



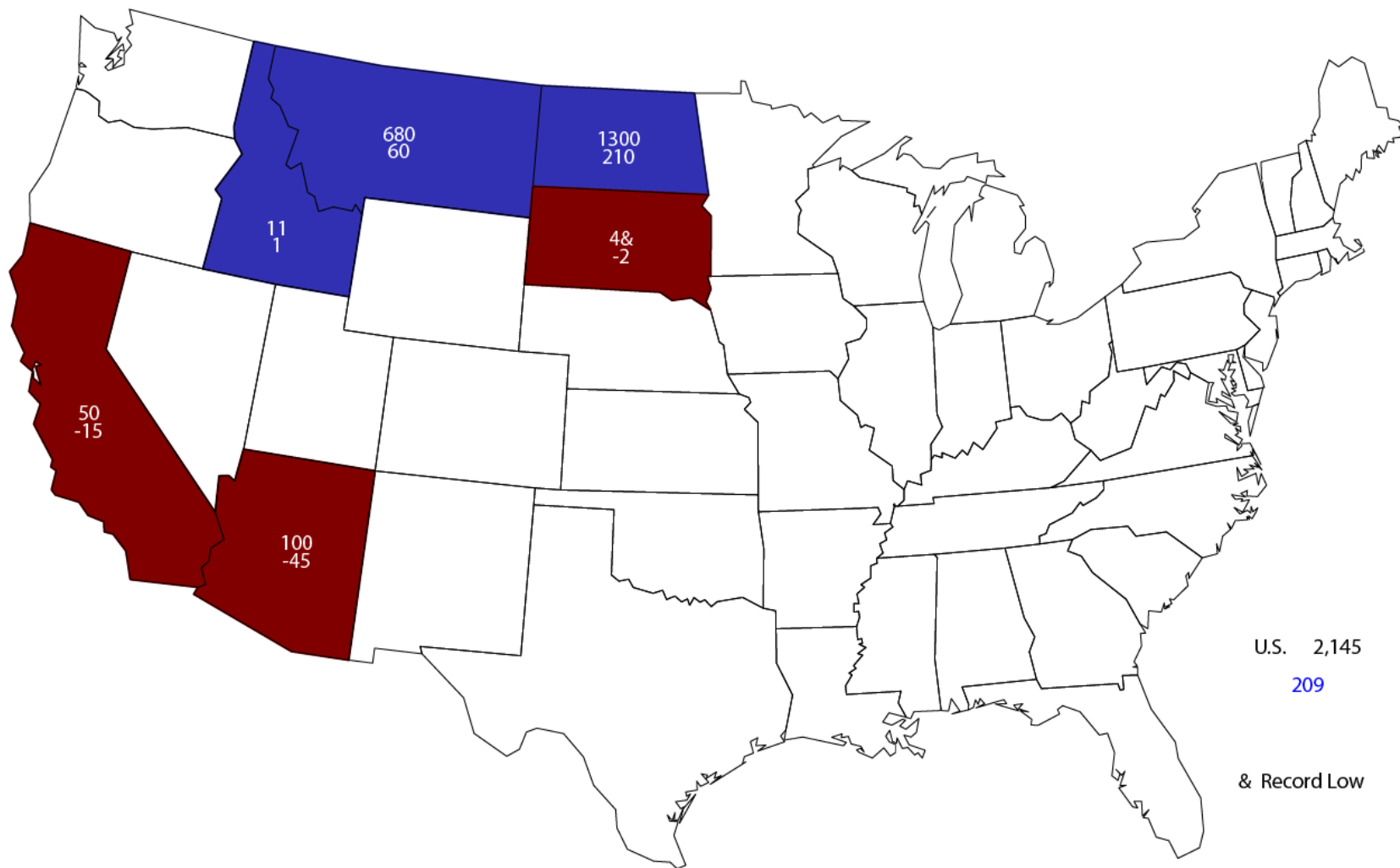
Durum Wheat Acres United States

Million Acres



2016 Durum Wheat Planted Area

(000) Acres and Change From Previous Year



U.S. 2,145
 209
 & Record Low



June 2016 Acreage

Crop	Unit	June 2016	% Change From Previous Estimate	% Change From Previous Season
Planted Area				
Sorghum	Mil Ac	7.23	+0.1	-14.6
Oats	Mil Ac	3.03	+10.0	-2.0
Barley	Mil Ac	2.97	-5.5	-16.6
Harvested Area				
All Hay	Mil Ac	56.1	+3.4	+3.1
Alfalfa	Mil Ac	18.1	NA	+1.6
Other Hay	Mil Ac	38.1	NA	+3.8

June 2016 Acreage

Crop	Unit	June 2016	% Change From Previous Estimate	% Change From Previous Season
Planted Area				
Rice	Mil Ac	3.21	+4.8	+22.9
Peanuts	Mil Ac	1.56	+5.9	-3.8
Sugarbeets	Mil Ac	1.17	+0.6	+0.5
Dry Beans	Mil Ac	1.69	+8.3	-4.3
Potatoes, Fall	Thou Ac	916	NA	-3.0
Potatoes, Summer	Thou Ac	58.8	NA	+16.4
Sweet Potatoes	Thou Ac	164	-3.0	+4.8
Harvested Area				
Sugarcane	Thou Ac	918	NA	+3.5
Tobacco	Thou Ac	311	-1.0	-5.3



June 2016 Acreage

Crop	Unit	June 2016	% Change From Previous Estimate	% Change From Previous Season
Planted				
A. Winter Peas	Thou Ac	34.0	+9.7	NC
Dry Peas	Mil Ac	1.27	-10.9	+10.9
Lentils	Thou Ac	930	+9.4	+88.6



June 2016 Acreage

Crop	Unit	June 2016	% Change From Previous Estimate	% Change From Previous Season
Planted				
Sunflower	Mil Ac	1.65	-2.8	-11.5
Canola	Mil Ac	1.70	-2.5	-4.1
Flaxseed	Thou Ac	342	-12.3	-26.1
Safflower	Thou Ac	150	NA	-10.8
Mustard Seed	Thou Ac	60.5	NA	+37.5
Rye	Mil Ac	1.76	NA	+12.2
Proso Millet	Thou Ac	410	NA	-7.9
Rapeseed	Thou Ac	13.9	NA	+1,058.3

Biotech Varieties

% of All Planted Acres

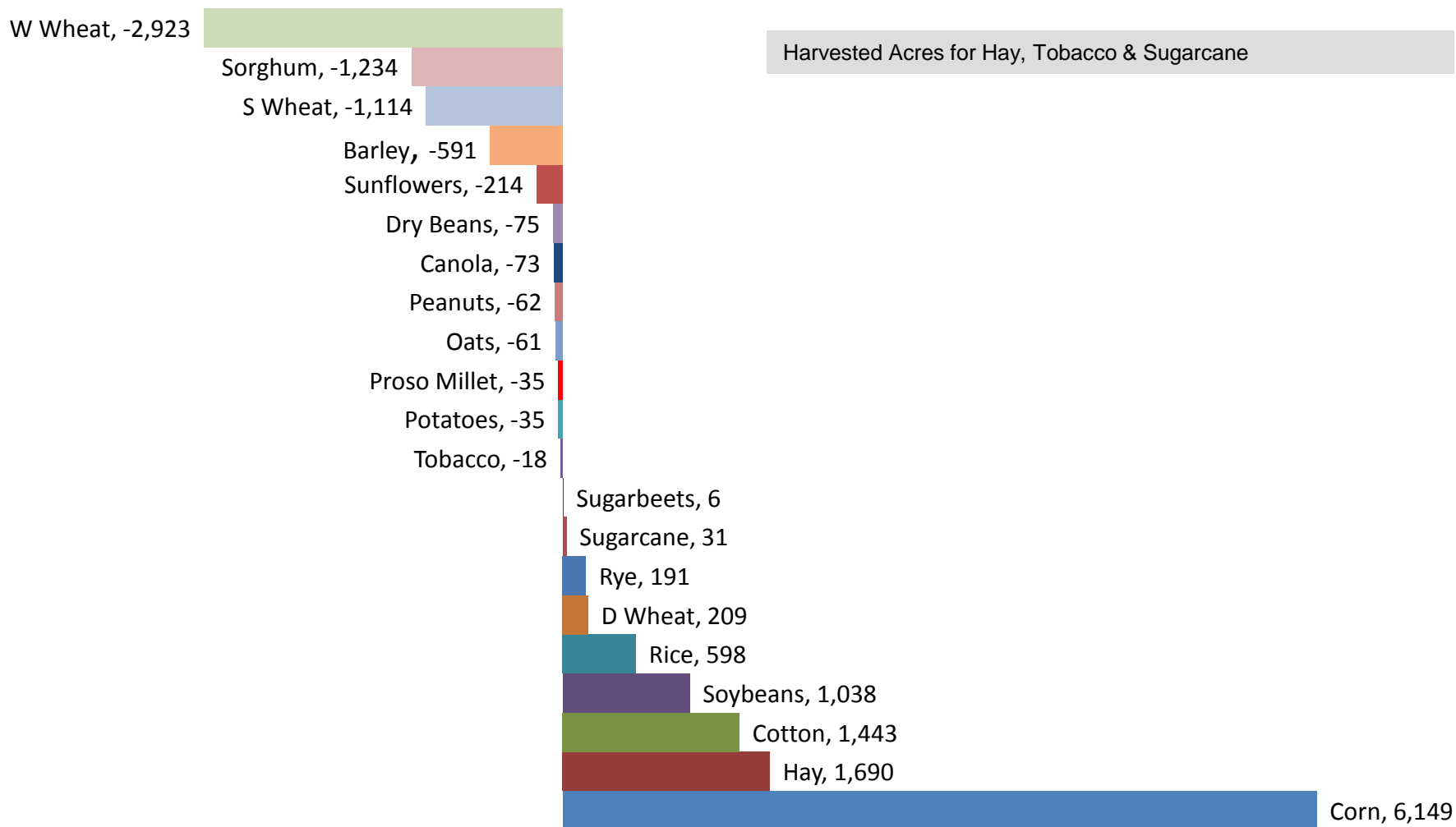
Crop	Herbicide Resistant Only		Insect Resistant (Bt) Only	
	2015	2016	2015	2016
Corn	12	13	4	3
Soybeans	94	94	-	-
Upland Cotton	10	9	5	4
Crop	Stacked Gene		All Biotech Varieties	
	2015	2016	2015	2016
Corn	77	76	92	92
Soybeans	-	-	94	94
Upland Cotton	79	80	94	93

Percent of Acres Remaining To Be Planted

Crop	2014	2015	2016
Corn	2.3	1.7	1.4
Soybeans	13.2	15.5	12.4
Other Spring Wheat	7.0	0.6	1.1
Durum Wheat	14.8	3.6	6.6

Change in Planted Acres (000)

2016 Compared With 2015





June Grain Stocks

Crop	Unit	June 2016	% Change From Previous Estimate	% Change From Previous Year
Stocks				
Corn	Bil Bu	4.72	NA	+6.0
Soybeans	Mil Bu	870	NA	+38.7
Sorghum	Mil Bu	88.3	NA	+157.4
Rice	Mil Cwt	64.3	NA	-9.9



June Grain Stocks

Crop	Unit	June 2016	% Change From Previous Estimate	% Change From Previous Year
Stocks				
Wheat, All	Mil Bu	981	NA	+30.4
Barley	Mil Bu	102	NA	+30.4
Oats	Mil Bu	56.8	NA	+5.7

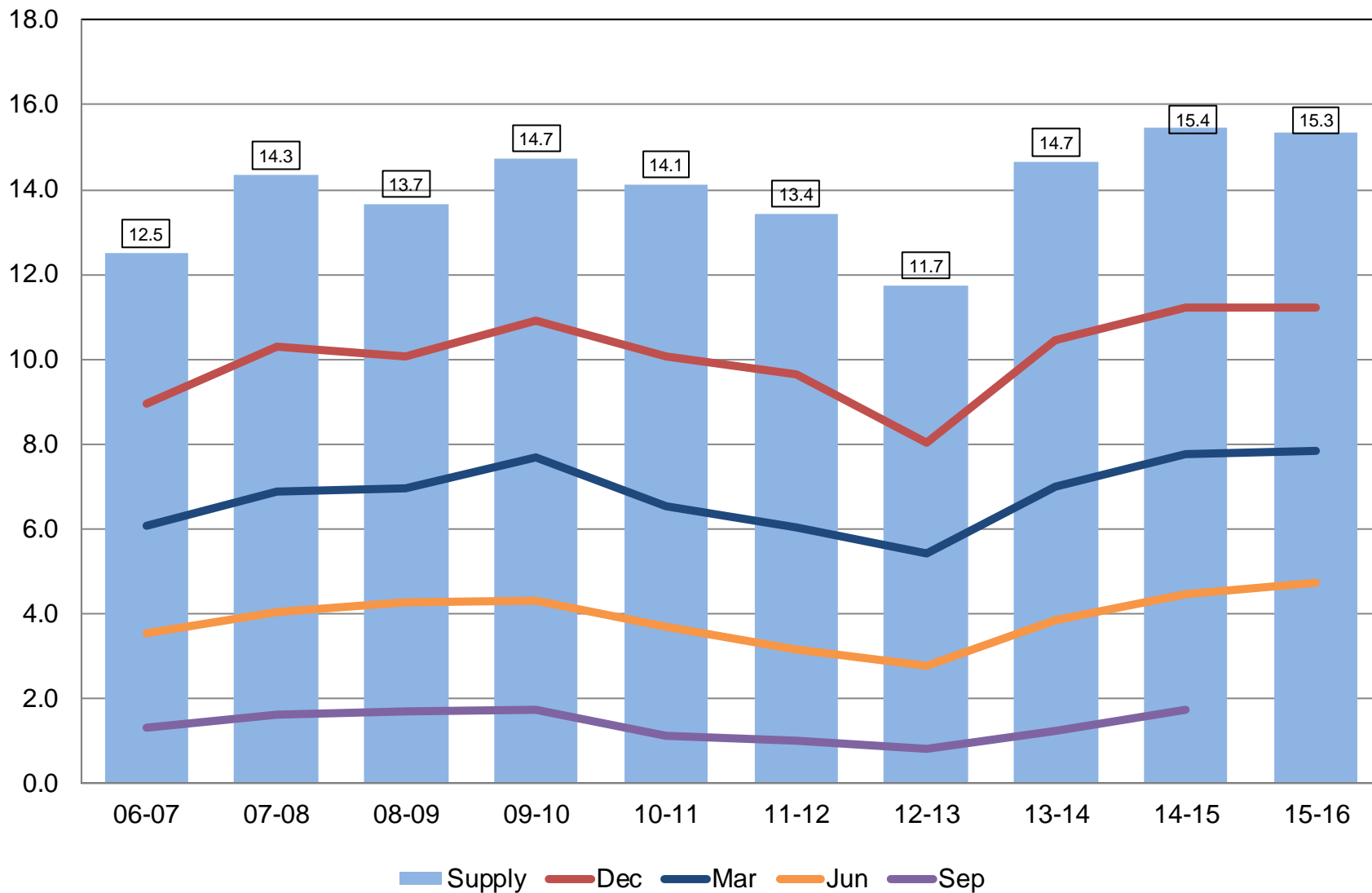


June Grain Stocks

Crop	Unit	June 2016	% Change From Previous Forecast	% Change From Previous Season
Stocks				
Dry Peas	Mil Cwt	3.70	NA	+18.8
Lentils	Thou Cwt	478	NA	-27.0
A. Winter Peas	Thou Cwt	57	NA	+9.6
Chickpeas	Thou Cwt	618	NA	-18.9
Small	Thou Cwt	100	NA	-43.5
Large	Thou Cwt	518	NA	-11.5

Corn Stocks United States

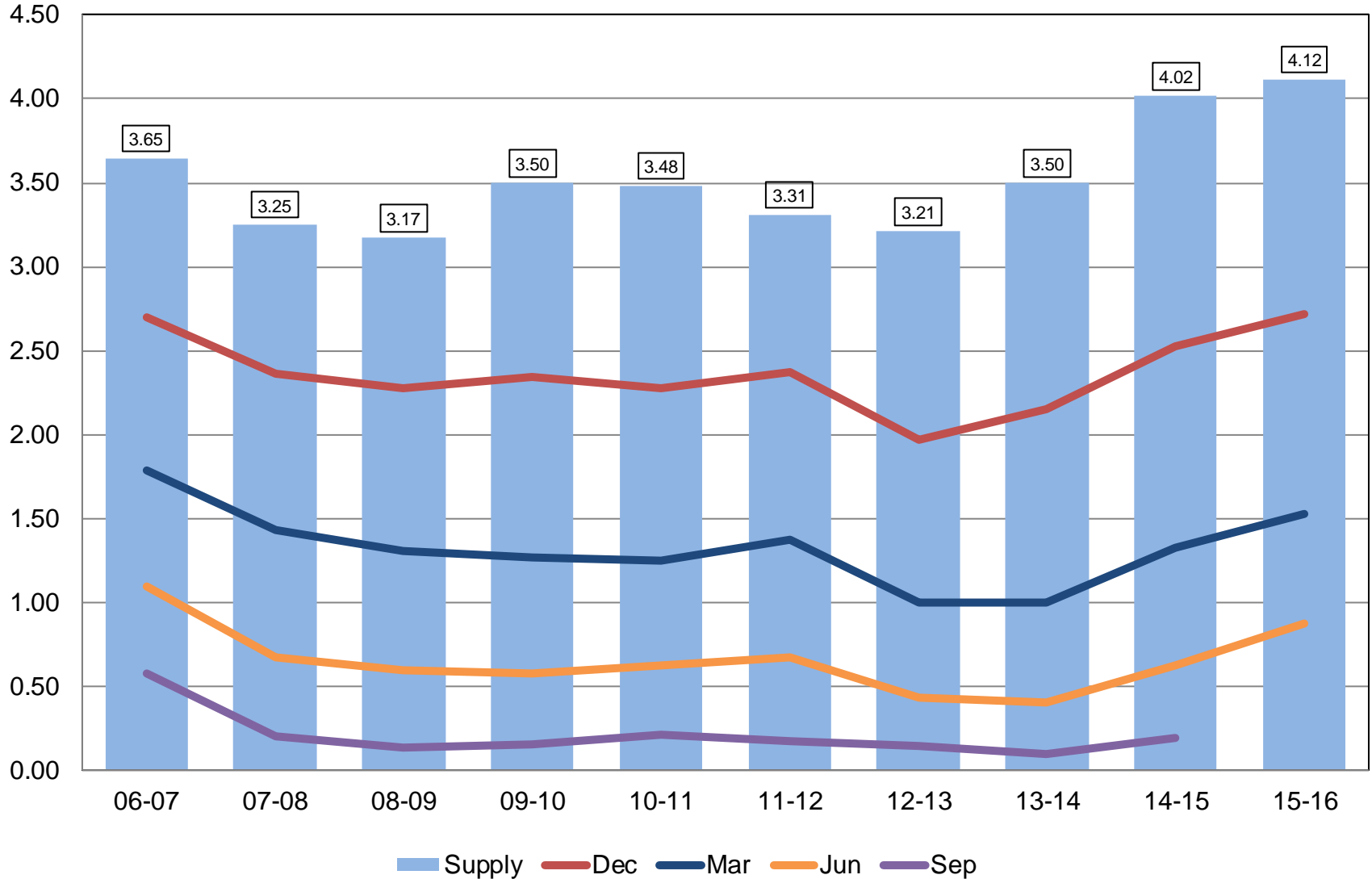
Billion Bushels





Soybean Stocks United States

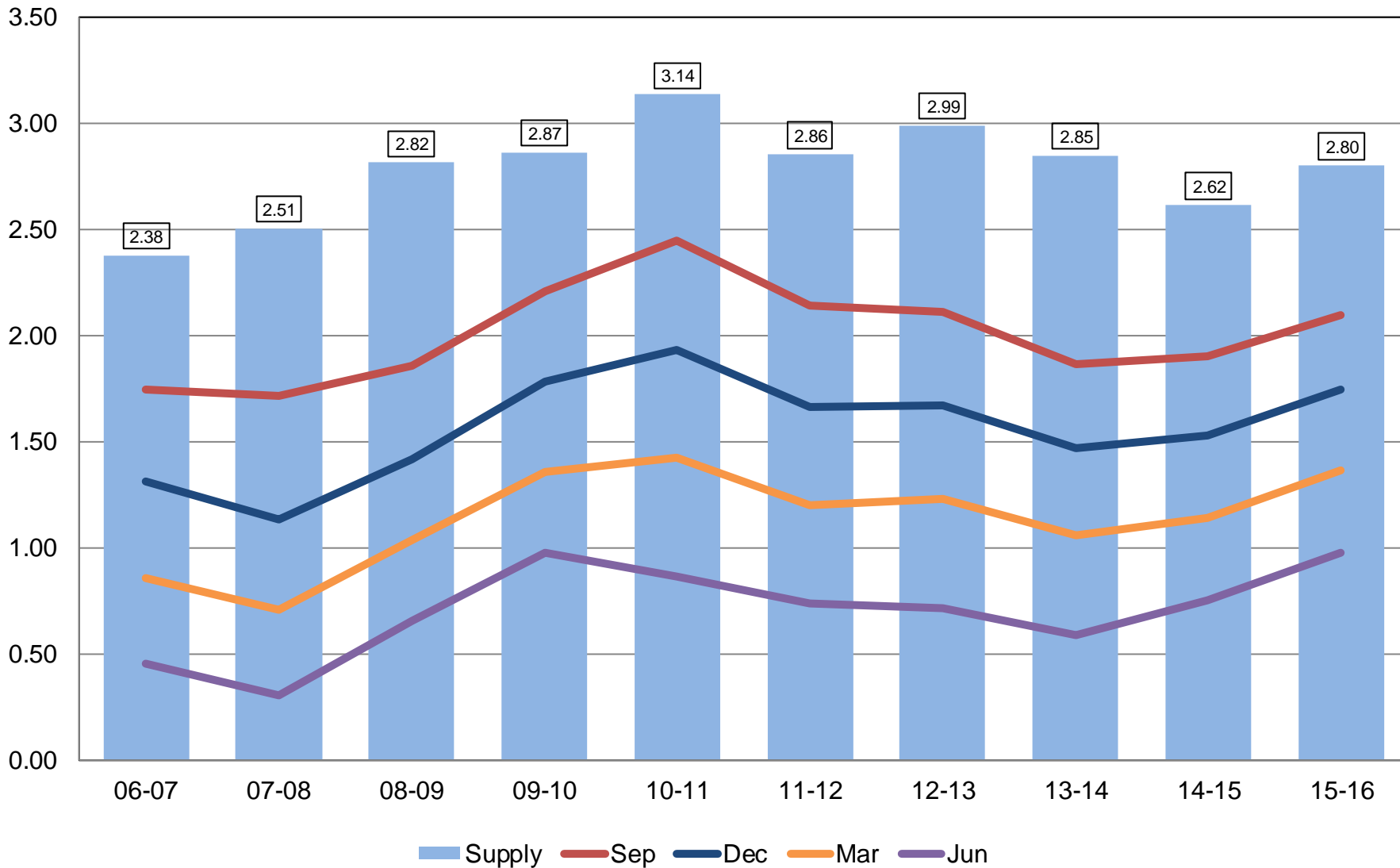
Billion Bushels





All Wheat Stocks United States

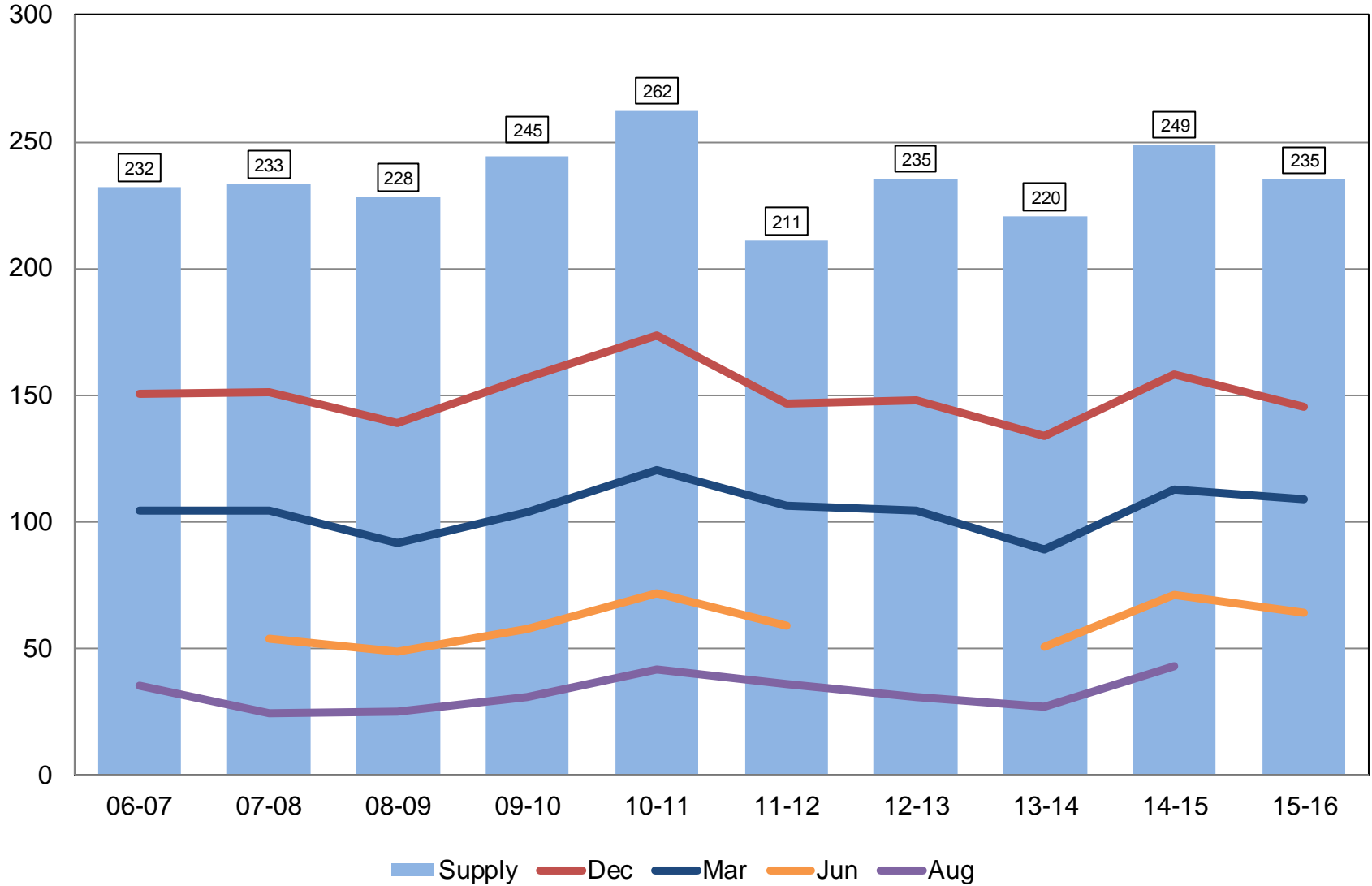
Billion Bushels





Rough Rice Stocks United States

Million Hundredweight





Upcoming Reports

Release Date	Report Title
July 1	CAIR: Cotton CAIR: Fats & Oils CAIR: Grain Crushings
July 6	Noncitrus Fruits and Nuts Annual Summary
July 12	Crop Production
July 22	Cattle on Feed
July 29	Agricultural Prices
August 3	CAIR: Cotton System CAIR: Fats & Oils CAIR: Flour Milling CAIR: Grain Crushings
August 12	Crop Production Cotton Ginnings



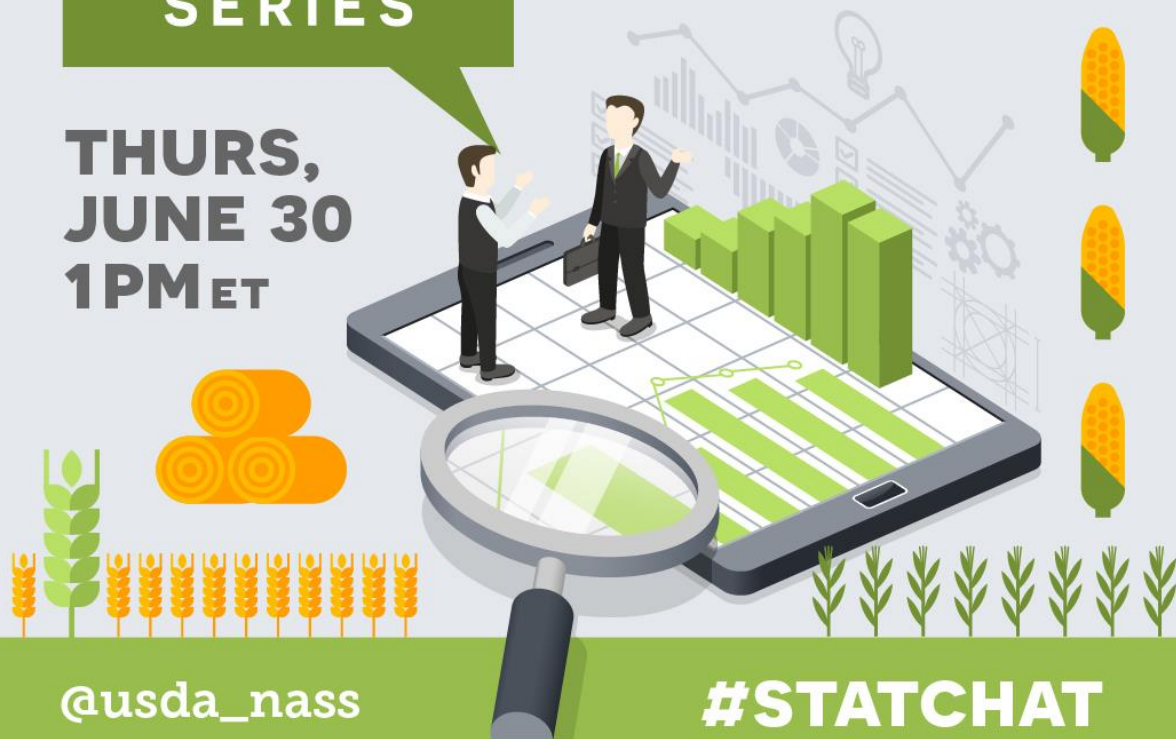
STAT CHAT SERIES

**THURS,
JUNE 30
1PM ET**

Join @USDA-NASS on Twitter, using **#StatChat** on Thursday, June 30 at 1 p.m. ET for our monthly chat.

Lance Honig, Chief of NASS' Crops Branch, will answer your questions about the *Acreage* report.

You can tweet questions in advance @usda_nass.



@usda_nass

#STATCHAT



United States Department of Agriculture
National Agricultural Statistics Service

All Reports Available At
www.nass.usda.gov

For Questions
202-720-2127
800-727-9540
nass@nass.usda.gov