



United States Department of Agriculture
National Agricultural Statistics Service



Hogs & Pigs Inventory
September 1, 2016

Executive Briefing



Survey Overview



September Hogs & Pigs

Data Collection Period	August 31 – September 20
Sample Size	8,157
Collection Methods	Mail, Telephone, Internet, Face-to-Face Interview
Primary Data Items	Total Inventory: by class, weight group, and quarter sows farrowing, pig crop, and pigs per litter



U.S. Hogs and Pigs Revisions



Survey	Item	Initial Estimate (1,000 head)	Previous Revision (1,000 head)	Current Revision (1,000 head)	Net Revision (1,000 head)	Current Estimate (1,000 head)
December 1, 2015	All Hogs and Pigs	68,299	+570 +0.8%	+50 +0.1%	+620 +0.9%	68,919
March 1, 2016	All Hogs and Pigs	67,644	-170 -0.3%	+650 +1.0%	+480 +0.7%	68,124
	Pig Crop	29,582		+556 +1.9%		30,138
June 1, 2016	All Hogs and Pigs	68,381		+40 +0.1%		68,421



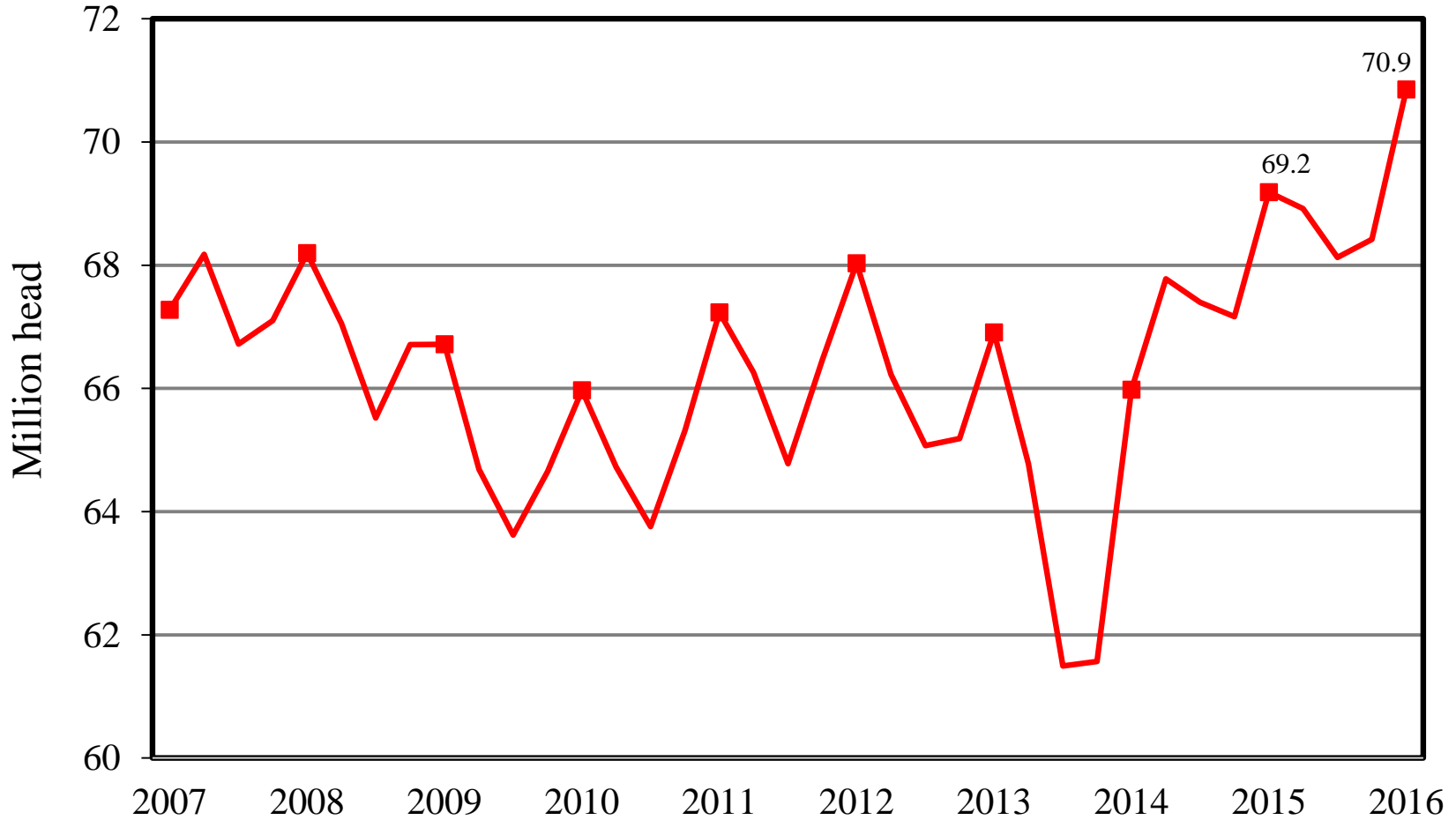
U.S. Hogs & Pigs September 1



Items	2015	2016	% PY
	1,000 head		
All Hogs & Pigs	69,185	70,851	102
Breeding Hogs	5,986	6,016	101
Market Hogs	63,200	64,835	103
less than 50 lbs	20,741	21,090	102
50-119 lbs	18,496	18,851	102
120-179 lbs	12,855	13,325	104
180 lbs & over	11,108	11,568	104
Sows Farrowed	3,017	3,024	100
Pig Crop	31,343	31,983	102
	number		
Pigs per Litter	10.39	10.58	102
	1,000 head		
Sep-Nov Farrowings	2,929	2,928	100
Dec-Feb Farrowings	2,927	2,925	100

U.S. Quarterly Hogs & Pigs

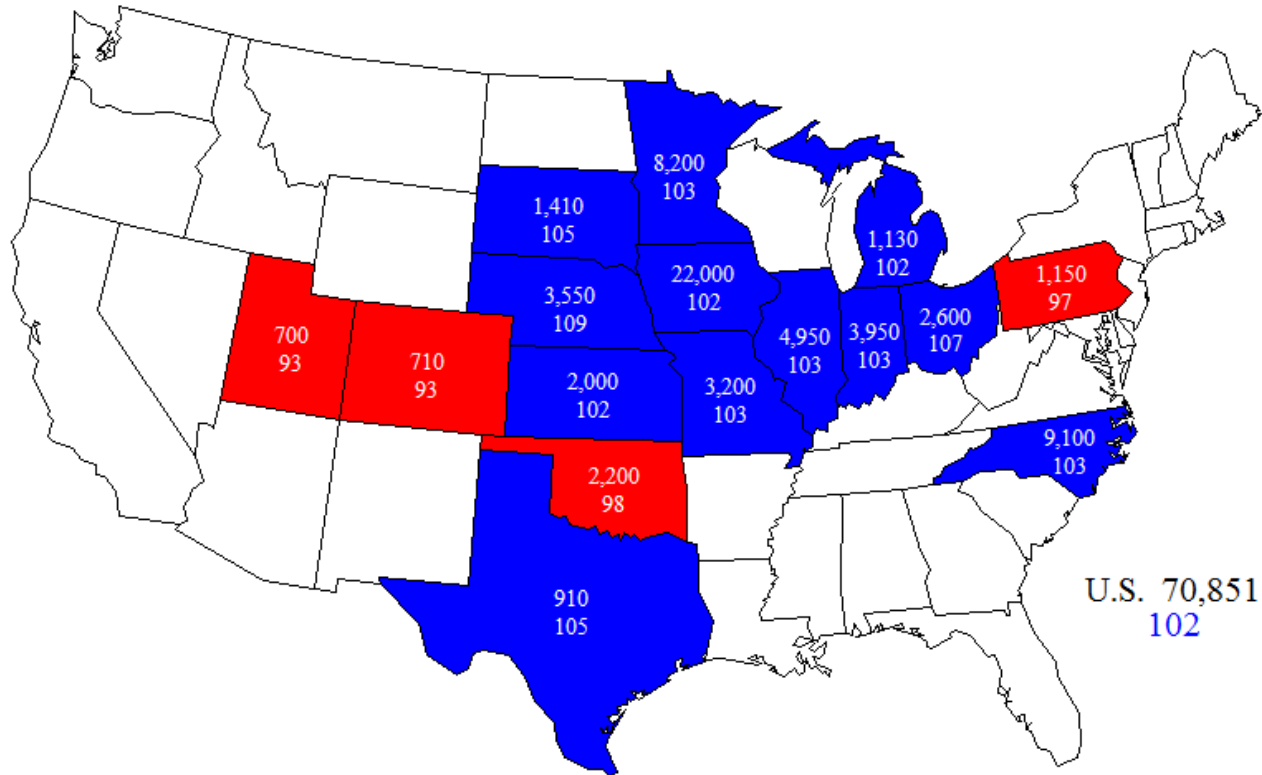
2007 - 2016



September 1, 2016

Hogs and Pigs Inventory

(000) Head and Percent of Previous Year





NASS Estimates Compared to Trade Expectations Percent of Previous Year

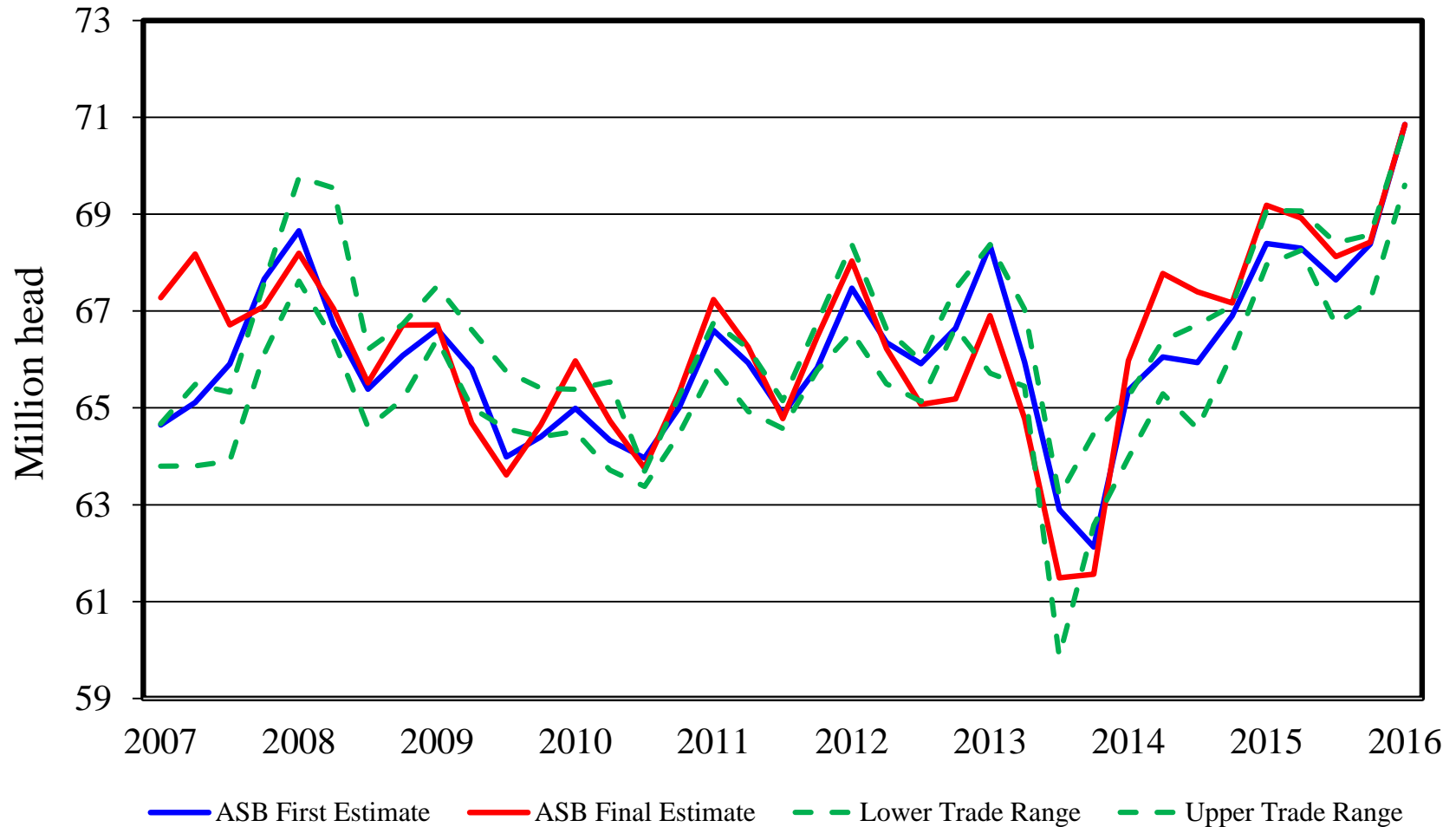


Inventory Items	NASS Estimate	Trade Average	Trade Range
All Hogs & Pigs	102.4%	101.1%	100.6% – 102.3%
Breeding Hogs	100.5%	100.6%	99.0% – 101.1%
Market Hogs	102.6%	101.1%	100.6% – 102.4%
Jun – Aug Pig Crop	102.0%	99.7%	99.0% – 101.3%
Farrowing Intentions			
Sep – Nov	100.0%	99.6%	98.0% – 101.1%
Dec – Feb	99.9%	100.2%	98.0% – 101.3%

All Hogs and Pigs

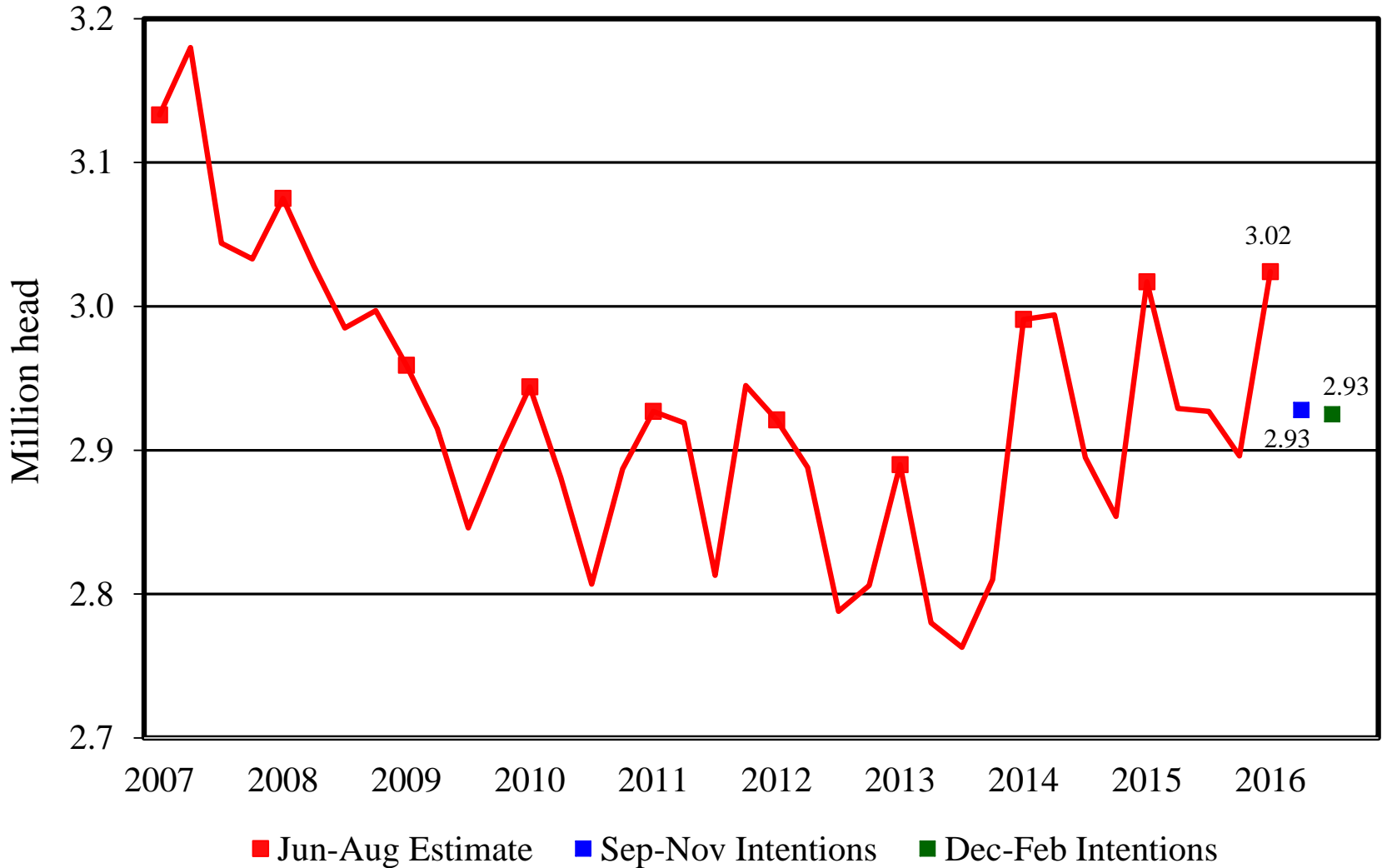
First Estimate versus Final Estimate

2007 - 2016



U.S. Quarterly Sows Farrowed

2007-2016





Breeding Herd Inventory

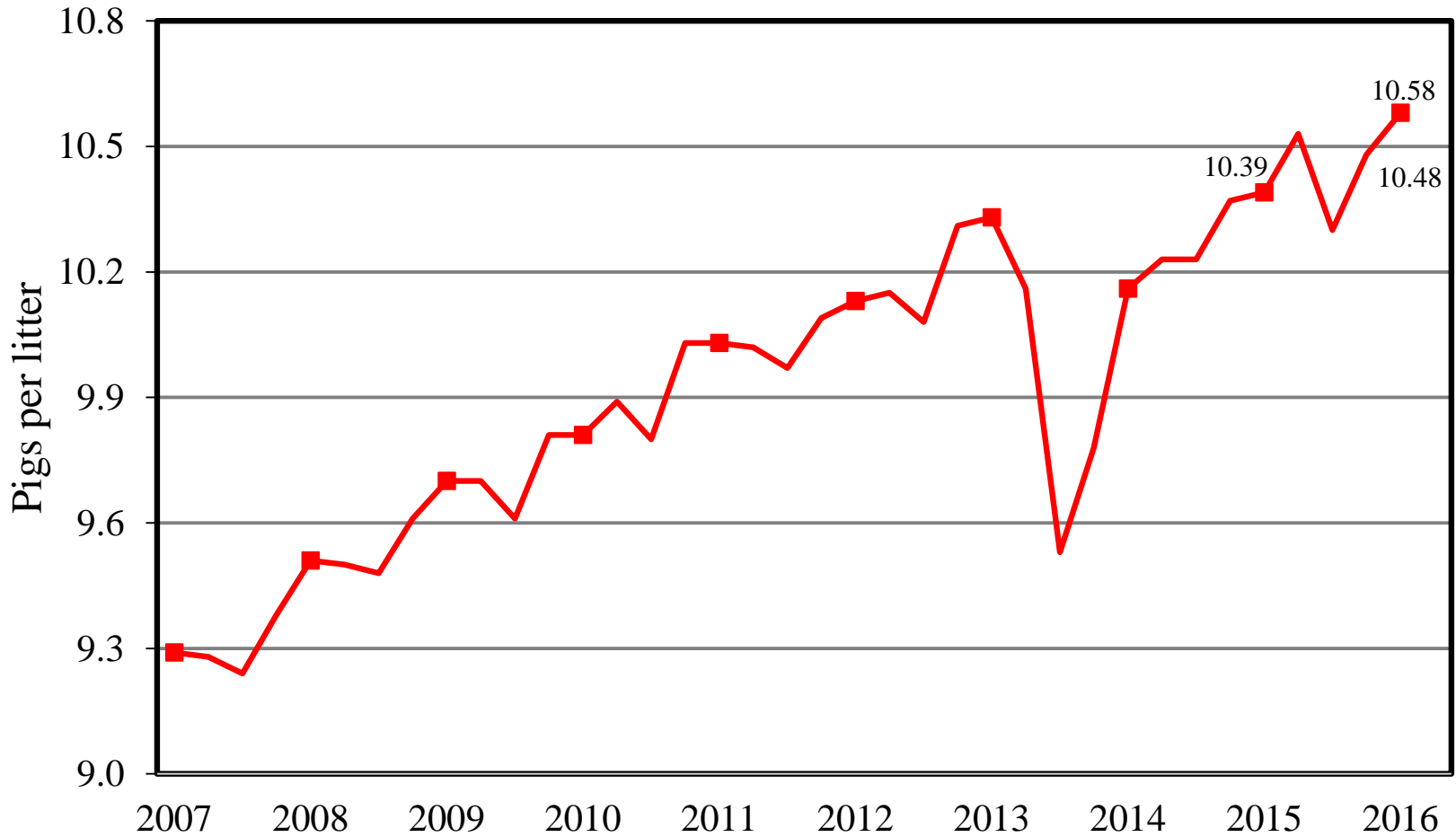
Disposition & Utilization



Year	Jun 1 Estimate (1,000 head)	Slaughter (1,000 head)	Additions (1,000 head)	Sep 1 Estimate (1,000 head)	Sow Utilization (Percent)
2007	6,169	945	984	6,208	51
2008	6,131	1,017	947	6,061	50
2009	5,968	963	870	5,875	50
2010	5,788	818	800	5,770	51
2011	5,803	848	851	5,806	50
2012	5,862	859	785	5,788	50
2013	5,884	796	728	5,816	49
2014	5,855	751	816	5,920	51
2015	5,926	798	858	5,986	51
2016	5,979	802	839	6,016	51

U.S. Quarterly Pigs per Litter

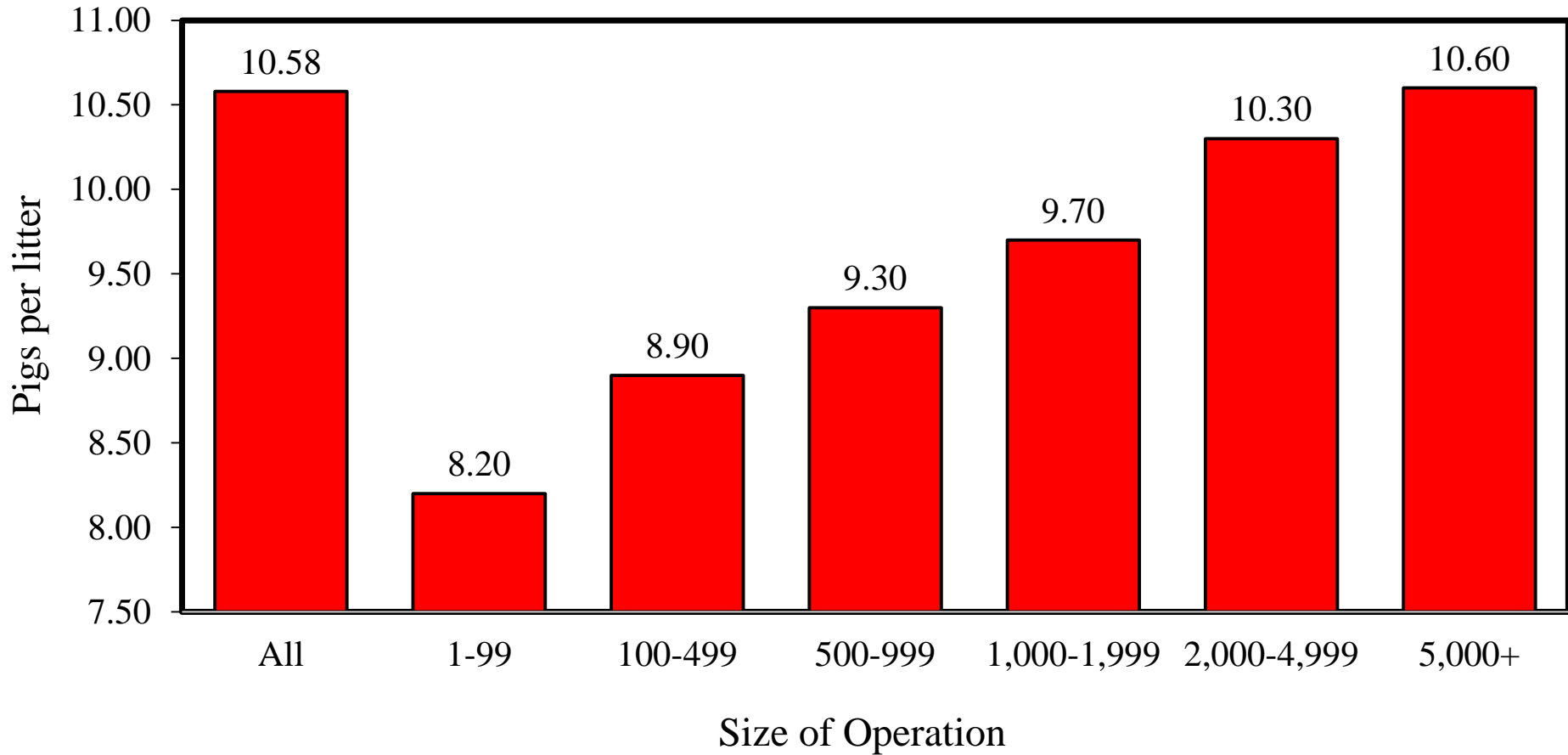
2007-2016



USDA U.S. Pigs per Litter by Size of Operation

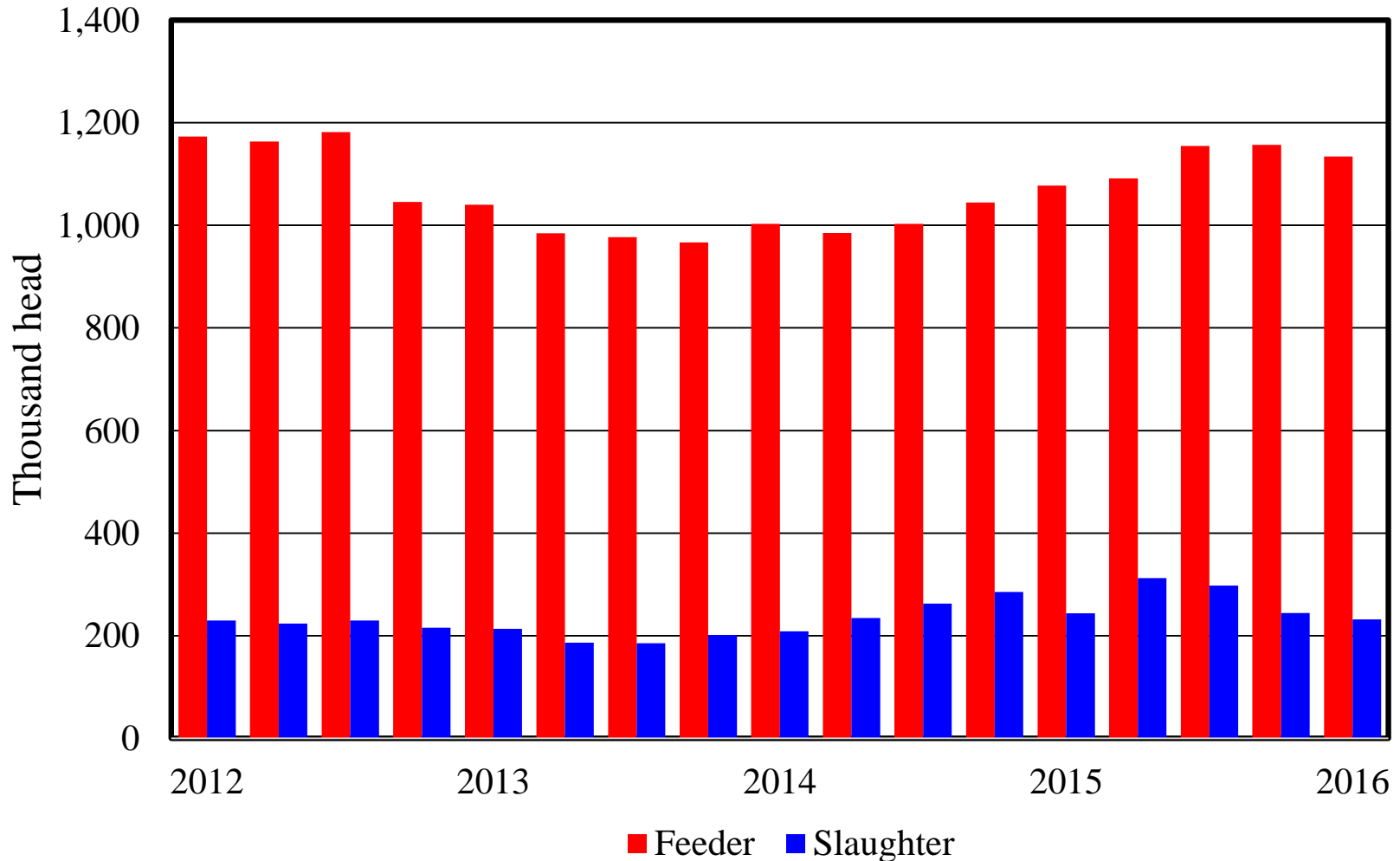


June-August 2016

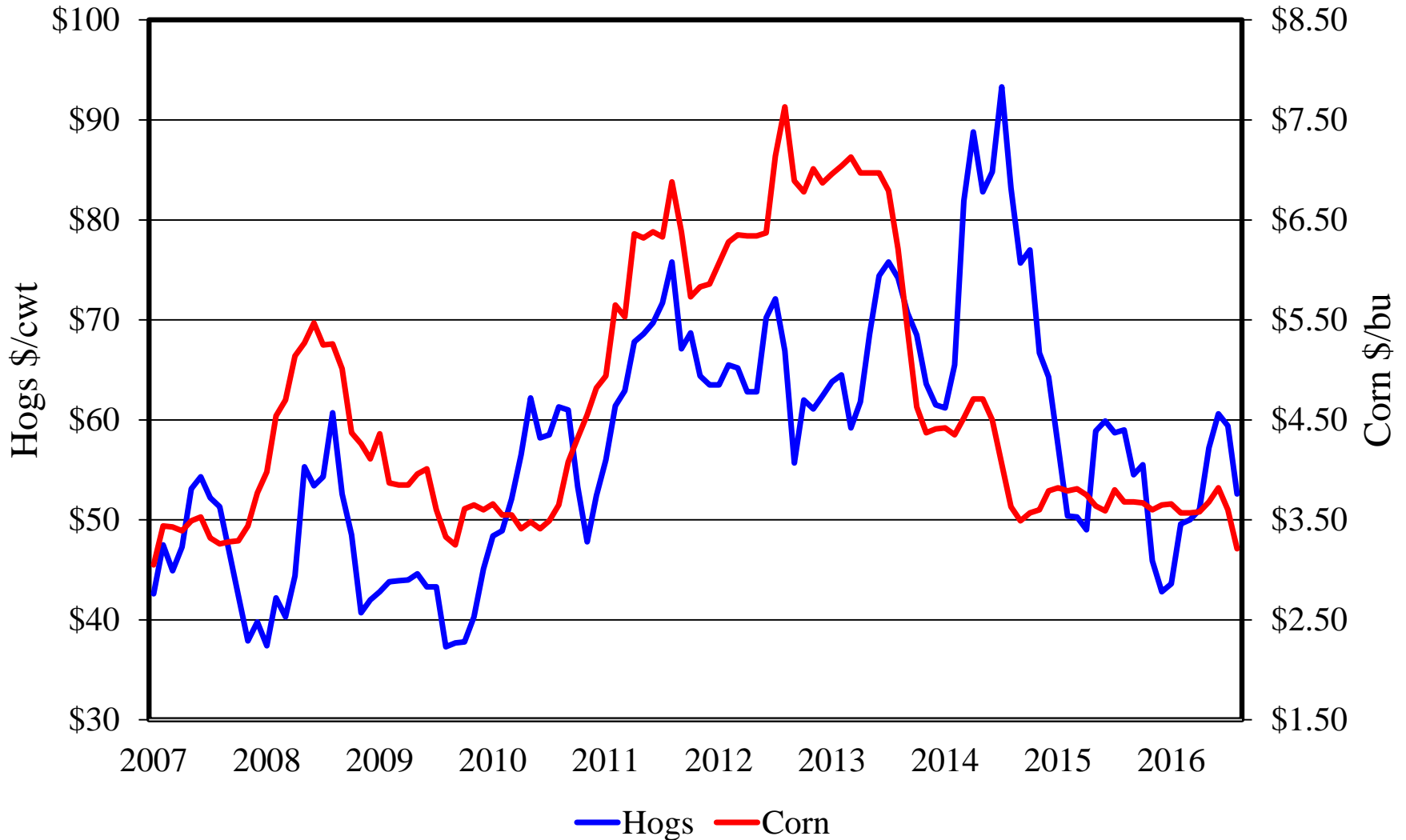


Canadian Imports by Quarter

Feeder Pigs and Slaughter Hogs



U.S. Prices Received by Farmers for Hogs & Corn





New Table for Records

Quarterly Hogs and Pigs Report

Records

The table below provides data users with record high estimates of all hogs and pigs, market hogs, pig crop and pigs per litter since each data series began.

Records by Quarter – United States: 1866 to present

Item	Estimate (1,000 head)	Record high (year)	Series began (year)
All hogs and pigs			
March 1	68,124	2016	1988
June 1	68,421	2016	1964
September 1	70,851	2016	1988
December 1	83,741	1943	1866
Market			
March 1	62,144	2016	1988
June 1	62,442	2016	1964
September 1	64,835	2016	1988
December 1	62,917	2015	1963
Pig crop			
December-February ¹	30,138	2016	1970
March-May	32,355	1970	1970
June-August	31,983	2016	1970
September-November	30,848	2015	1970
Pigs per litter			
December-February ¹	10.30	2016	1970
March-May	10.48	2016	1970
June-August	10.58	2016	1970
September-November	10.53	2015	1970

¹ December preceding year.



Upcoming NASS Reports



Release Date	Report Title
October 3	Cotton System Fats & Oils Grain Crushings
October 12	Crop Production
October 20	Milk Production
October 21	Cattle on Feed
October 27	Overview of the US Slaughter Industry
October 31	Agricultural Prices



United States Department of Agriculture
National Agricultural Statistics Service



All Reports Available At
www.nass.usda.gov

For Questions
(202) 720-3570
(800) 727-9540
nass@nass.usda.gov