



United States Department of Agriculture
National Agricultural Statistics Service

Prospective Plantings
Grain Stocks
Rice Stocks

Executive Summary

Lance Honig, Chief
Crops Branch



Contents

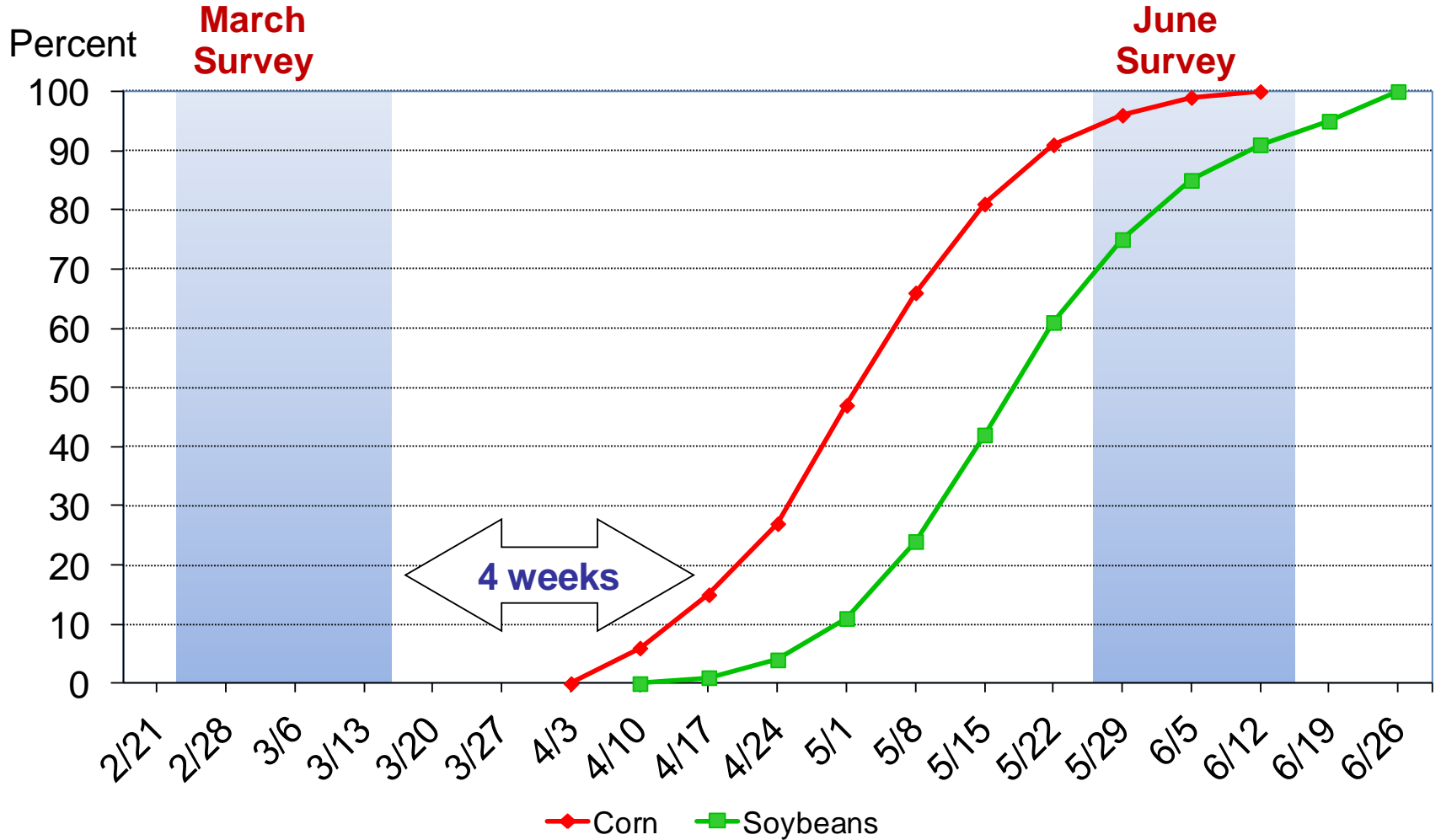
Field Crops	Stocks
Principal Crops Planted Acres	Corn
Feed Grain Acres	Soybeans
Food Grain Acres	Sorghum
Oilseed Acres	All Wheat
Other Crop Acres	Barley
	Oats
	Rough Rice

Survey Overview

	March Ag Survey	Off-Farm Grain Stock Survey
Survey Type	Farmer Reported	Reported
Collection Method	Mail, Phone, Internet, Personal Interview	Mail, Phone, Internet, Personal Interview
Crops Included	Acreage Intentions, On-Farm Stocks	Grains and Oilseed On Hand
States	All except AK and HI	All except AK, HI, and NV
Sample Size	83,290	~ 8,600 Facilities
Collection Period	Feb 27 – Mar 20	Feb 27 – Mar 20

Acres Intention vs. Actual Planted Acres

Usual Planting Progress





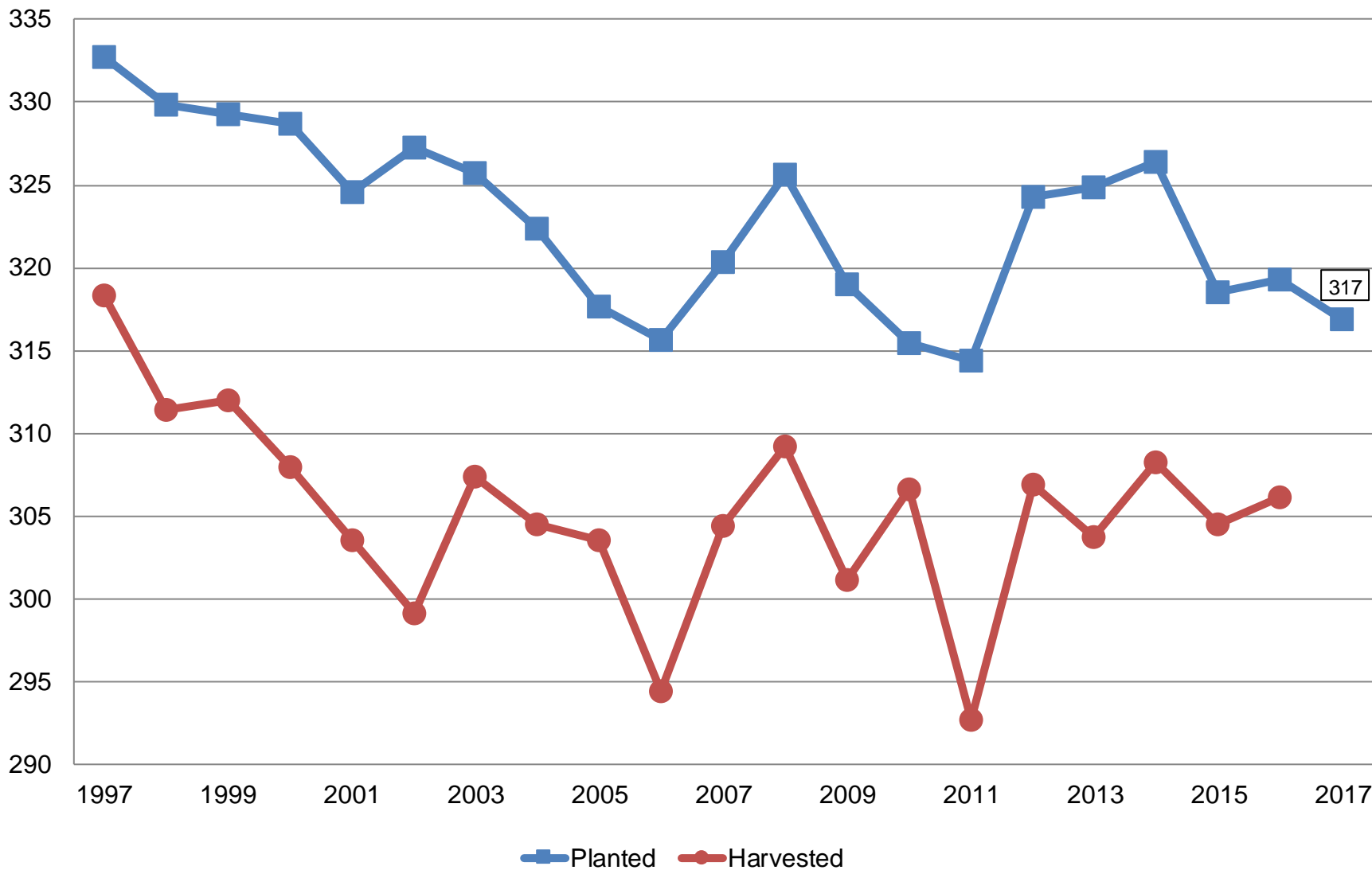
Principal Crops Planted Acreage

United States

Year	Principal Crops	Change From Previous Year
	<i>Million Acres</i>	
2008	325.6	+5.3
2009	319.0	-6.6
2010	315.4	-3.6
2011	314.3	-1.1
2012	324.3	+10.0
2013	324.9	+0.6
2014	326.4	+1.6
2015	319.0	-7.4
2016	319.2	+0.2
2017	316.9	-2.3

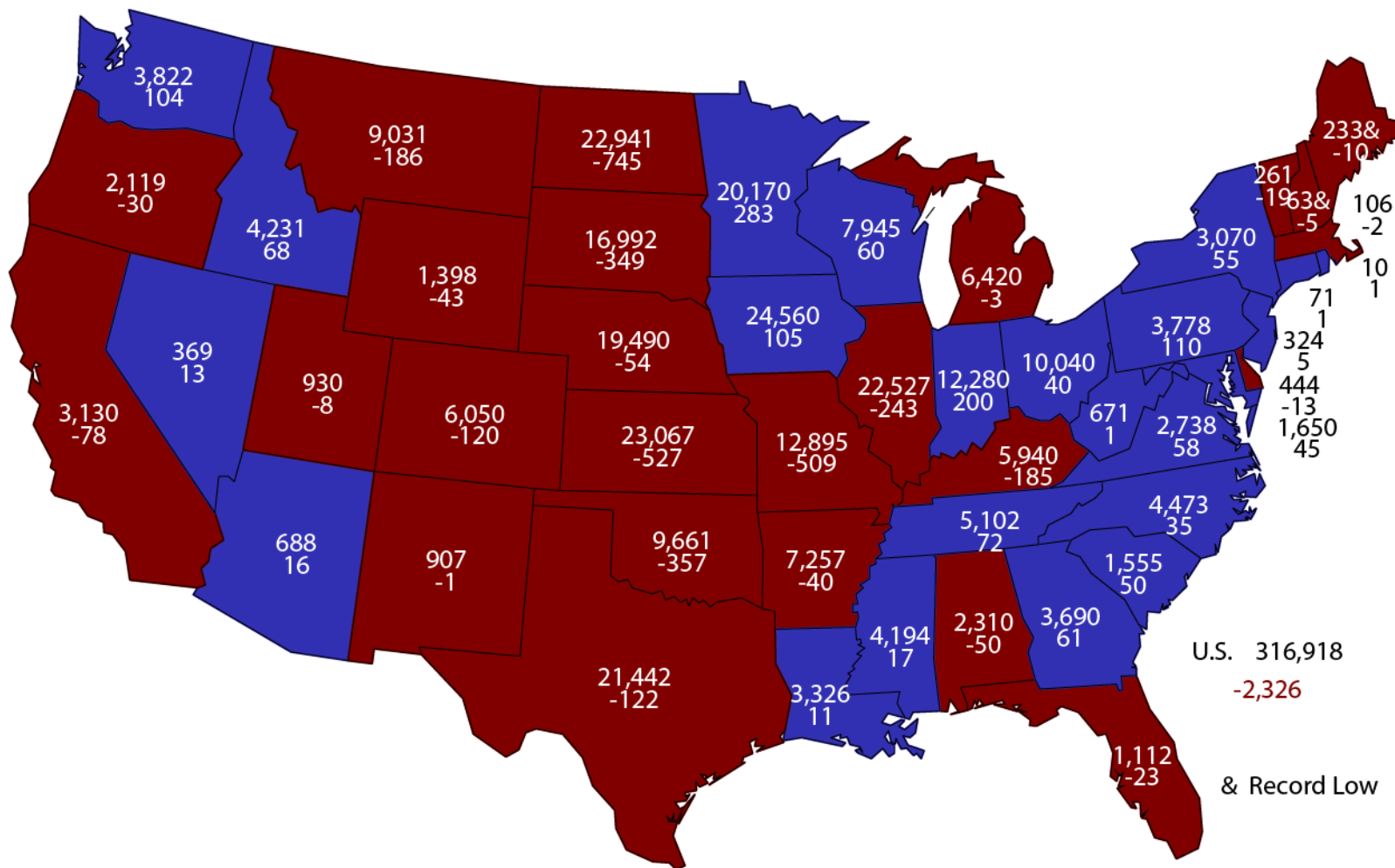
Principal Crops United States

Million Acres



2017 Principal Crops Planted Area

(000) Acres and Change From Previous Year

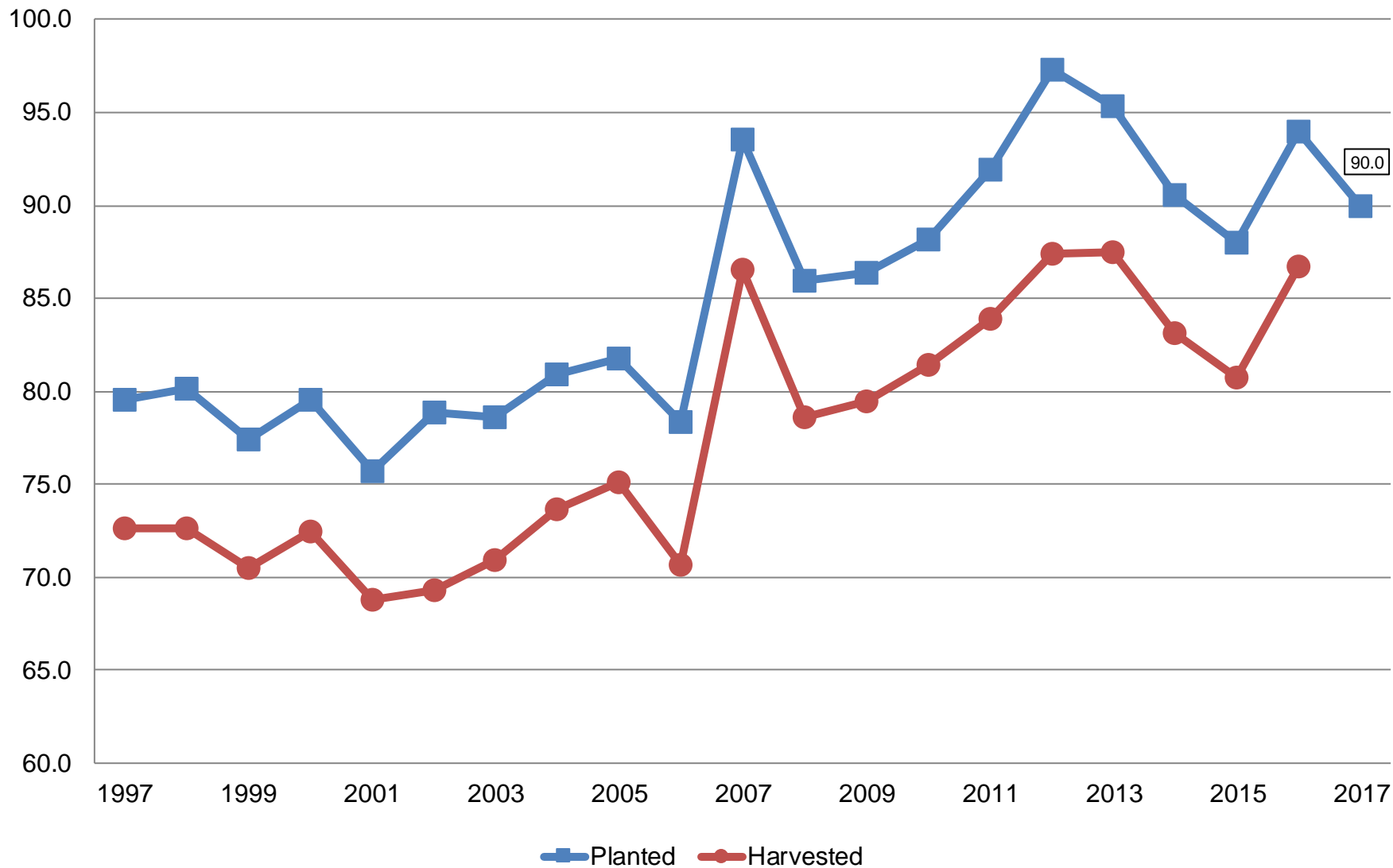


U.S. 316,918
 -2,326
 & Record Low



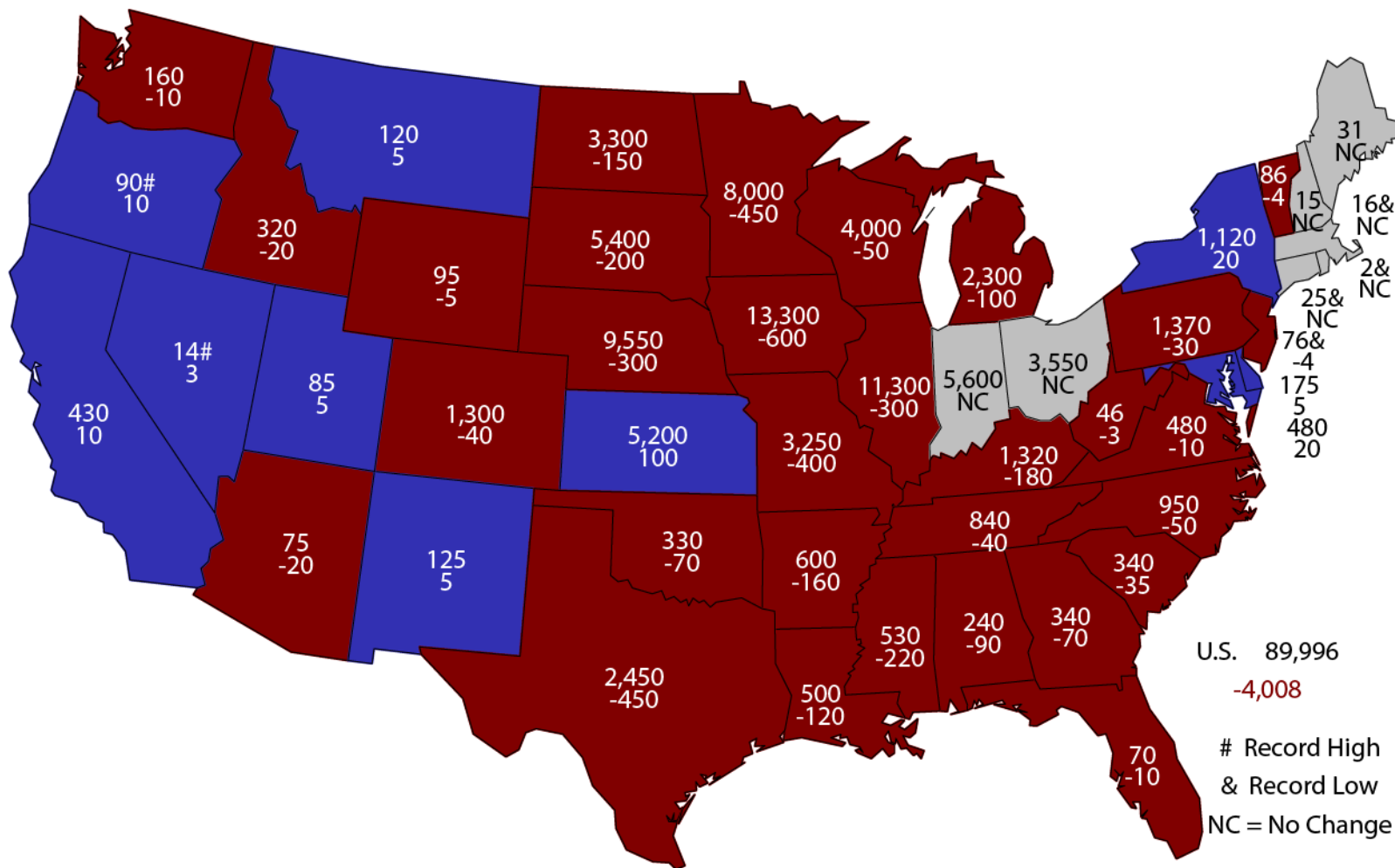
Corn Acres United States

Million Acres



2017 Corn Planted Area

(000) Acres and Change From Previous Year

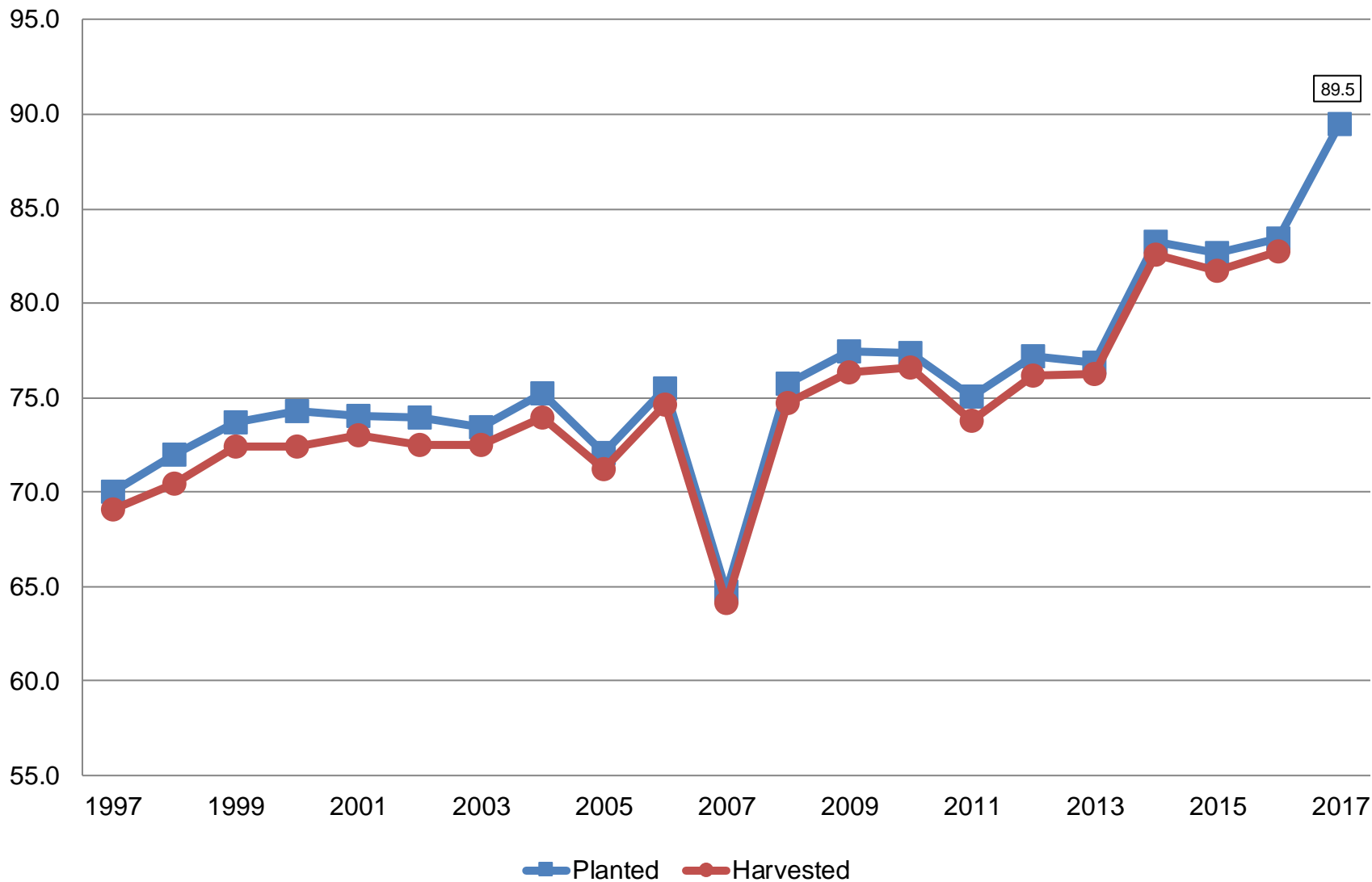


U.S. 89,996
 -4,008
 # Record High
 & Record Low
 NC = No Change



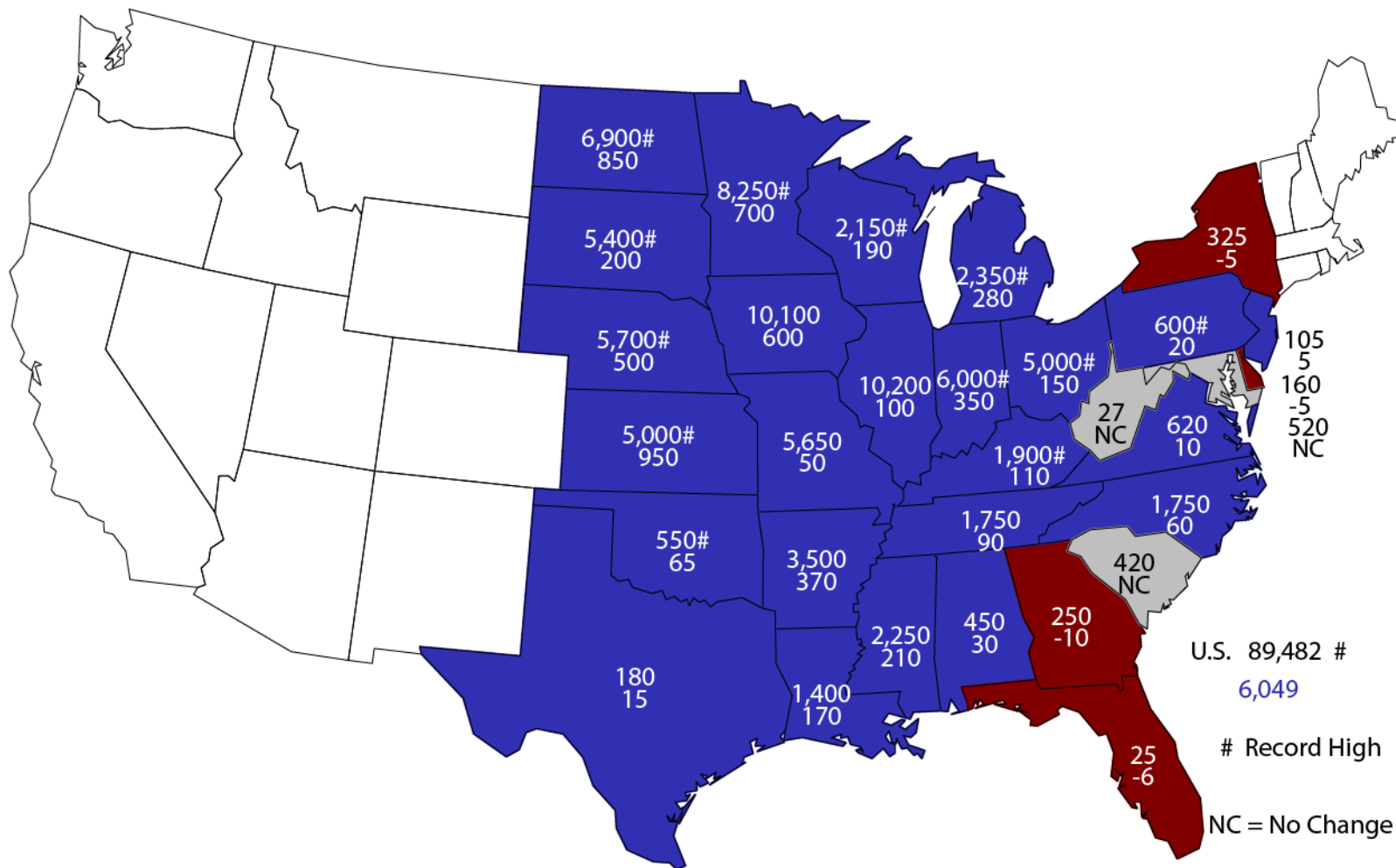
Soybean Acres United States

Million Acres



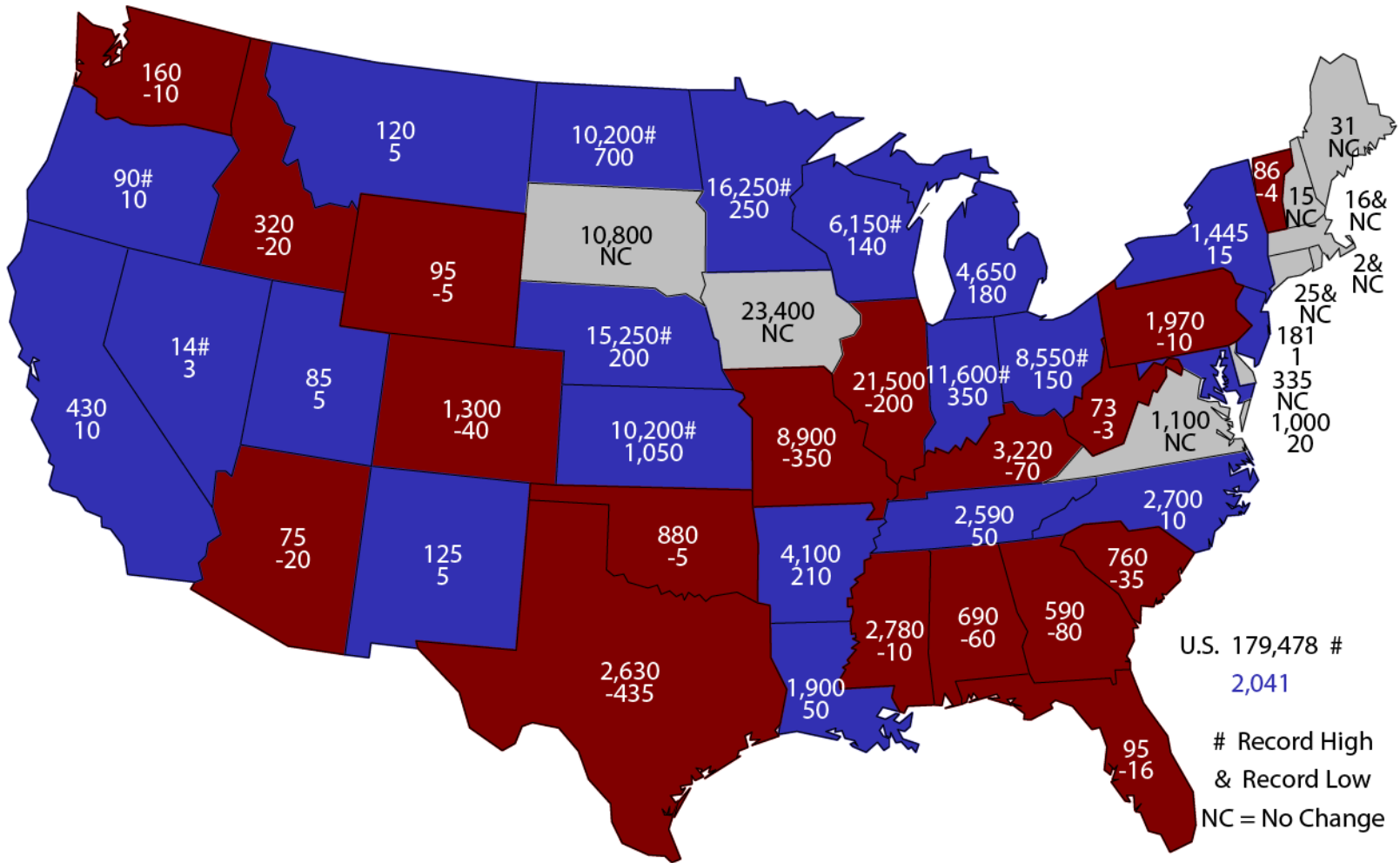
2017 Soybean Planted Area

(000) Acres and Change From Previous Year



2017 Combined Corn & Soybean Planted Area

(000) Acres and Change From Previous Year

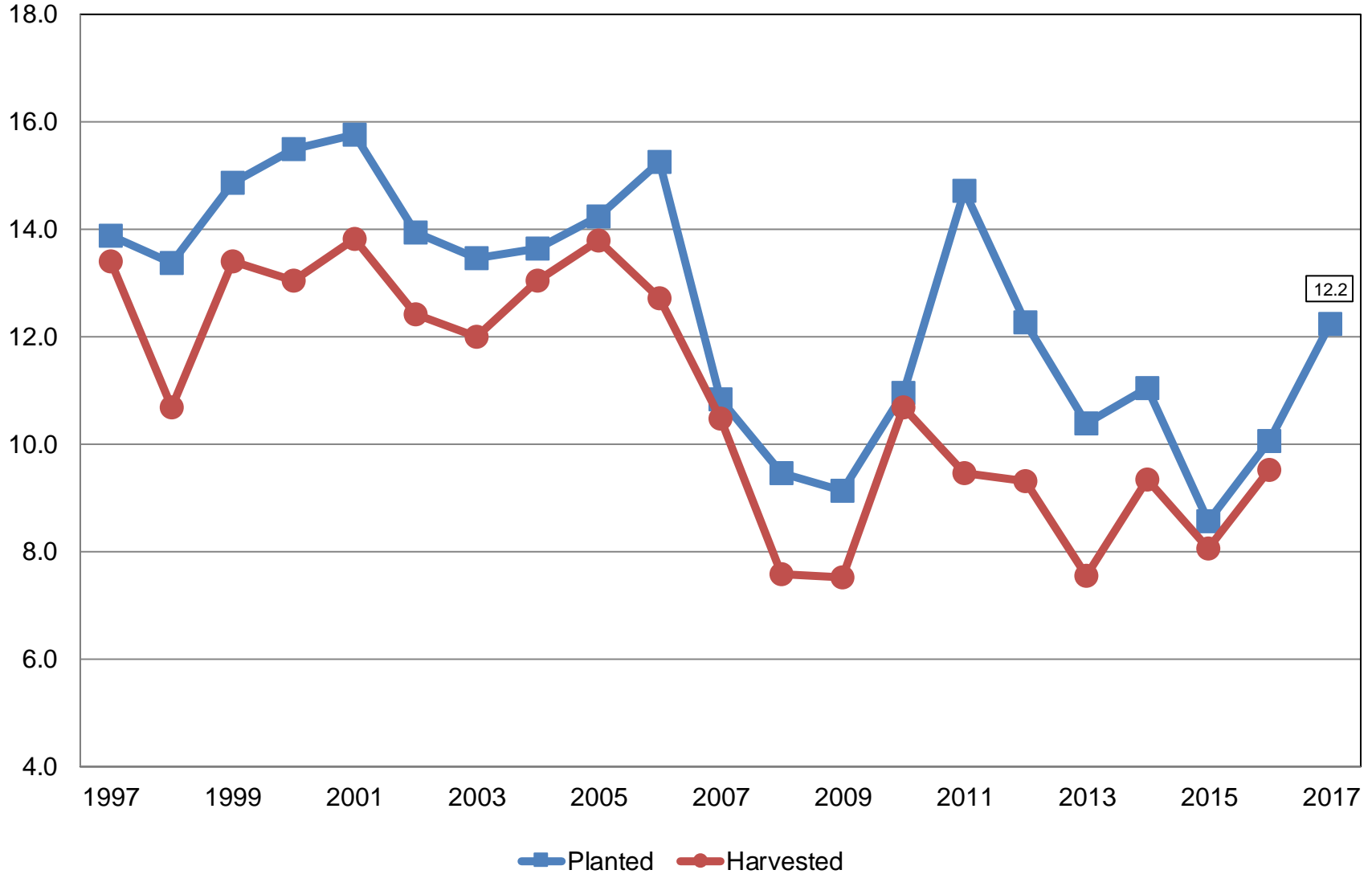


U.S. 179,478 #
2,041
Record High
& Record Low
NC = No Change



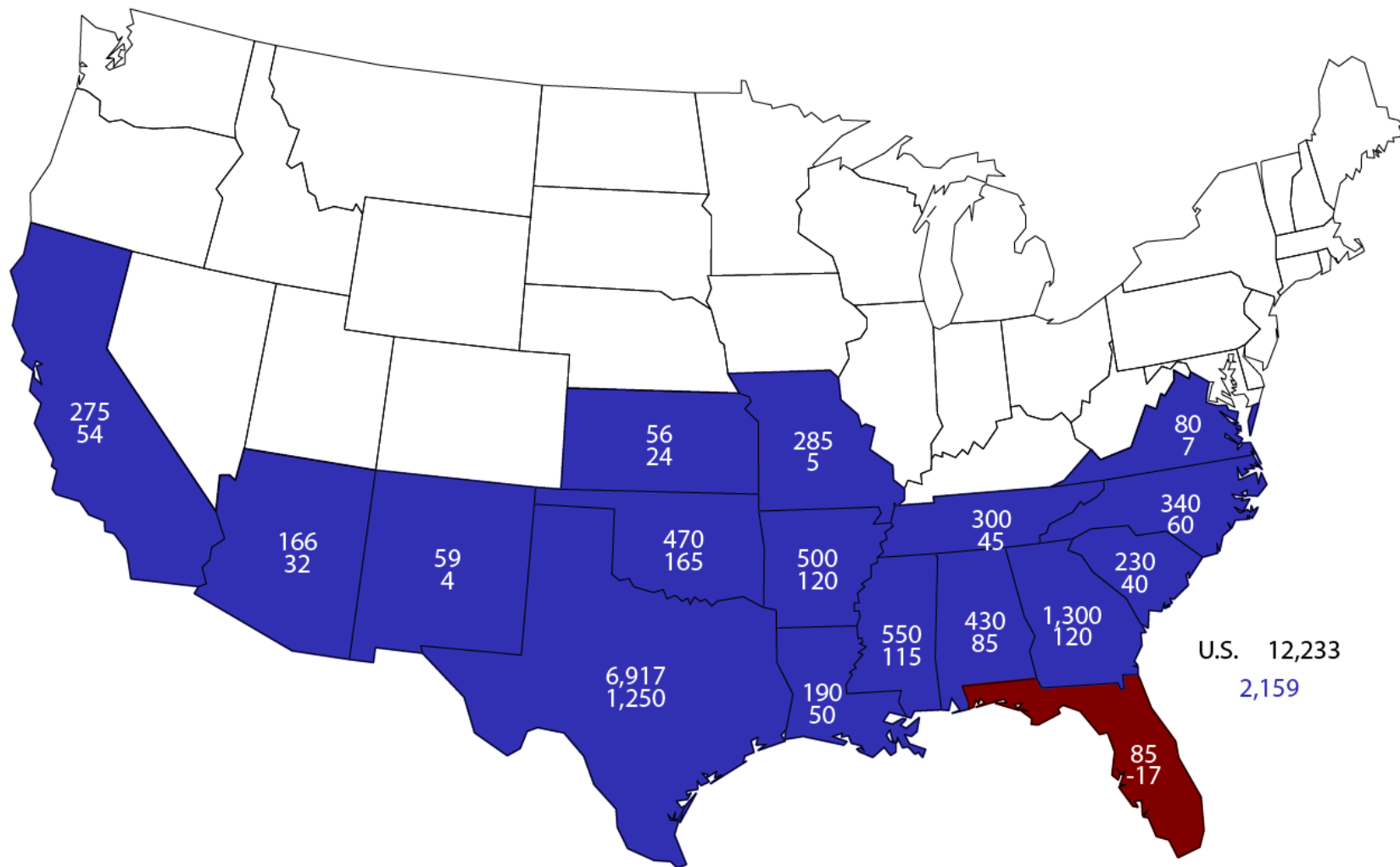
All Cotton Acres United States

Million Acres



2017 All Cotton Planted Area

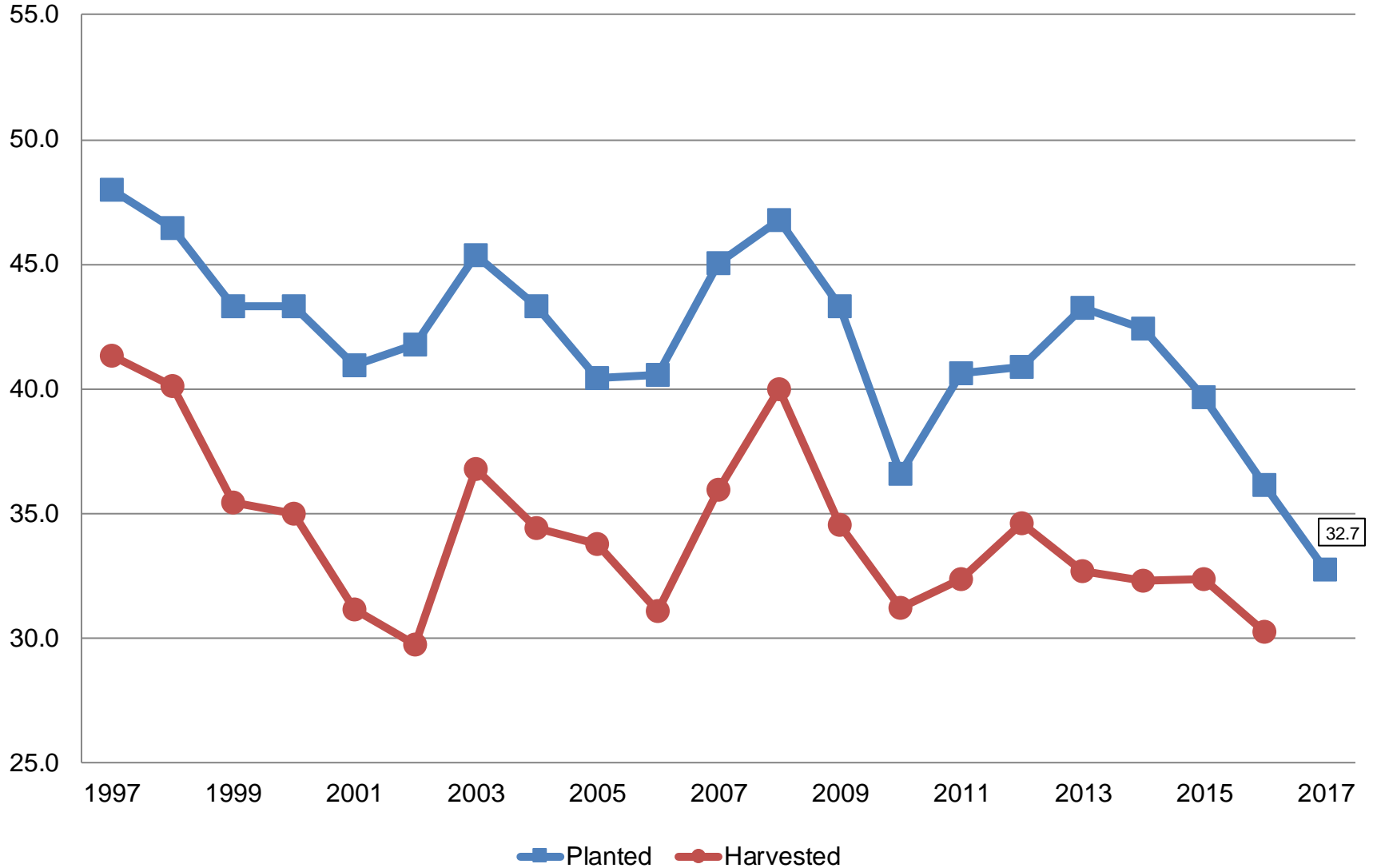
Acres (000) and Change From Previous Year





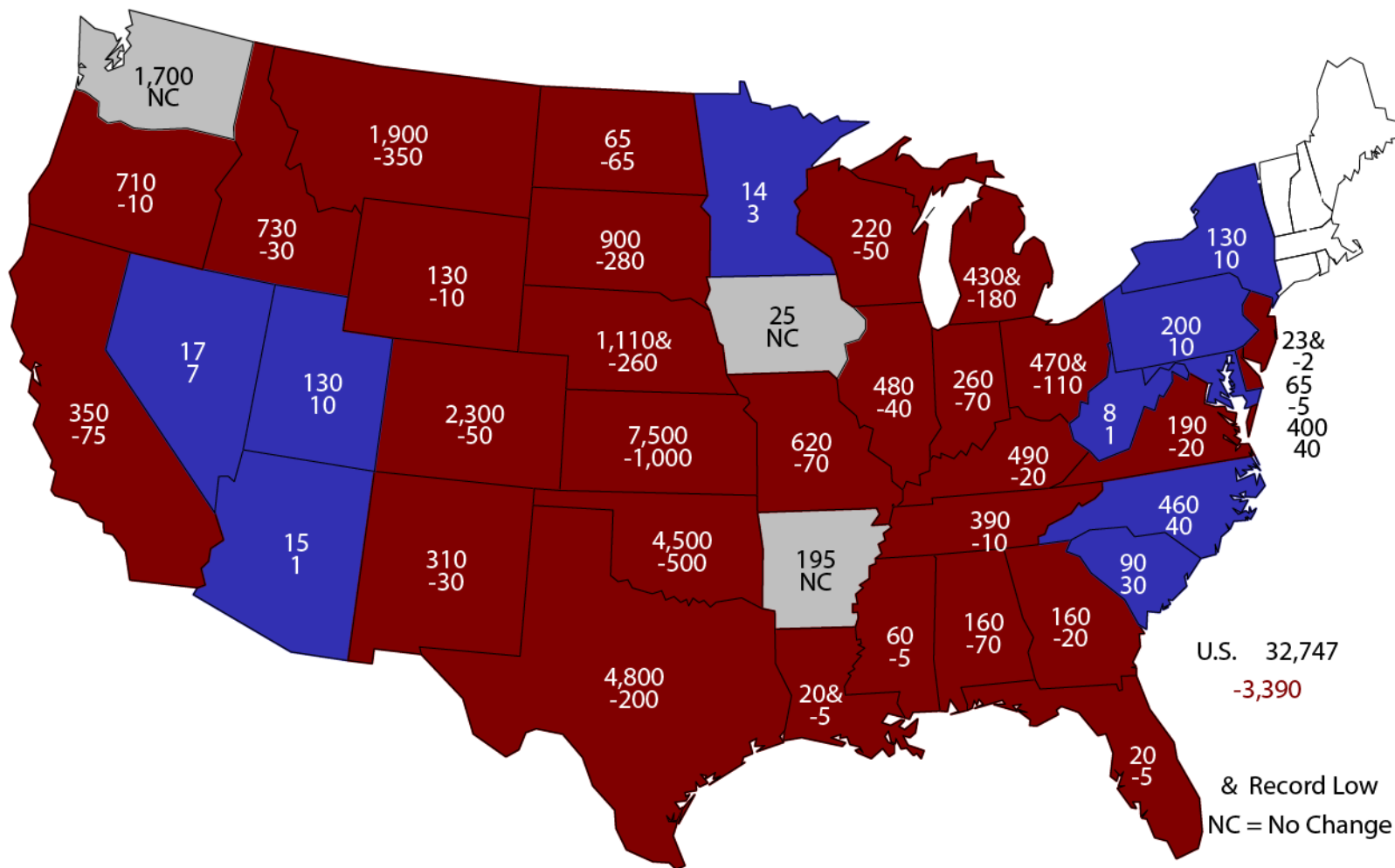
Winter Wheat Acres United States

Million Acres



2017 Winter Wheat Planted Area

(000) Acres and Change From Previous Year



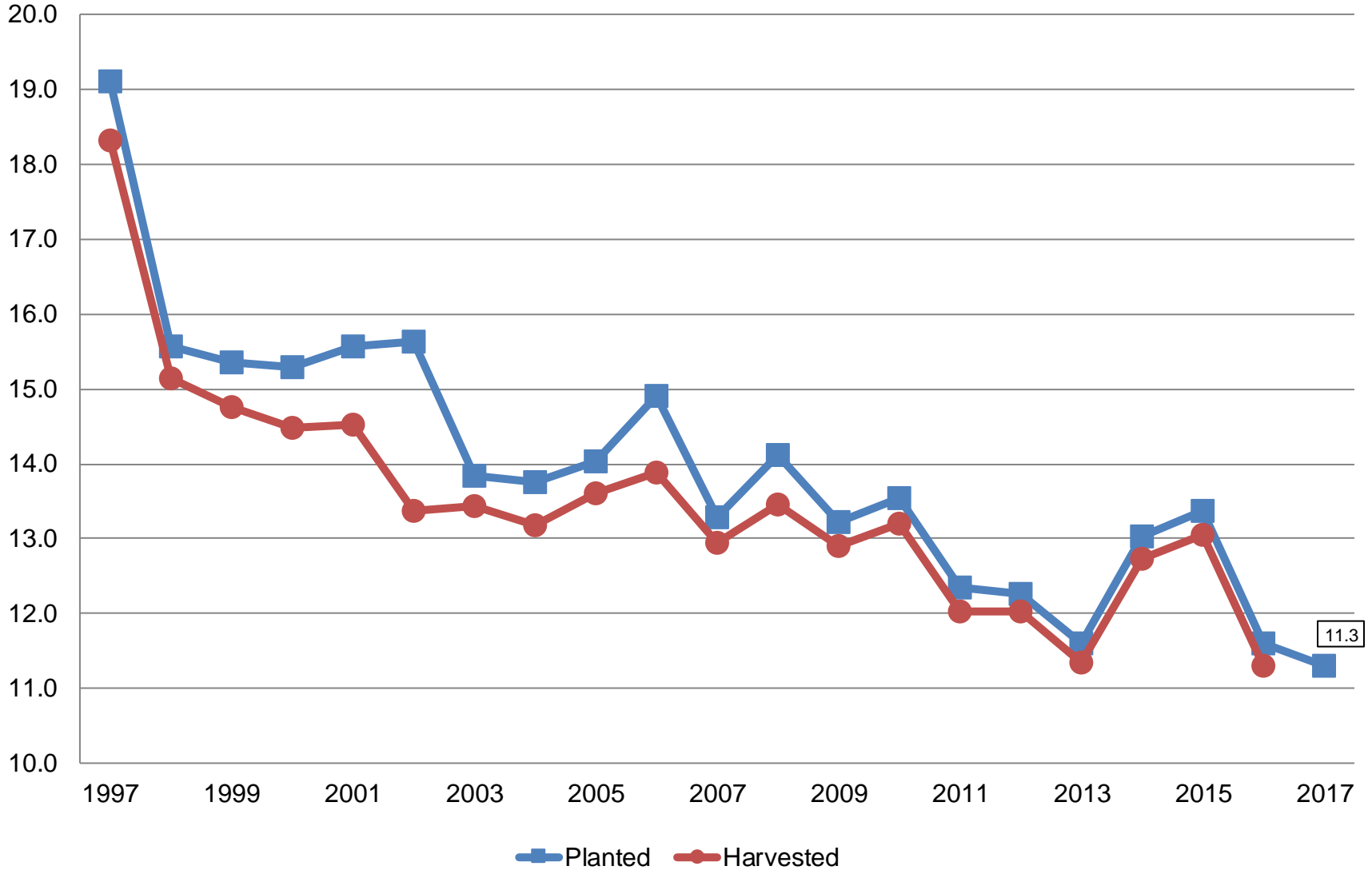
U.S. 32,747
-3,390

& Record Low
NC = No Change



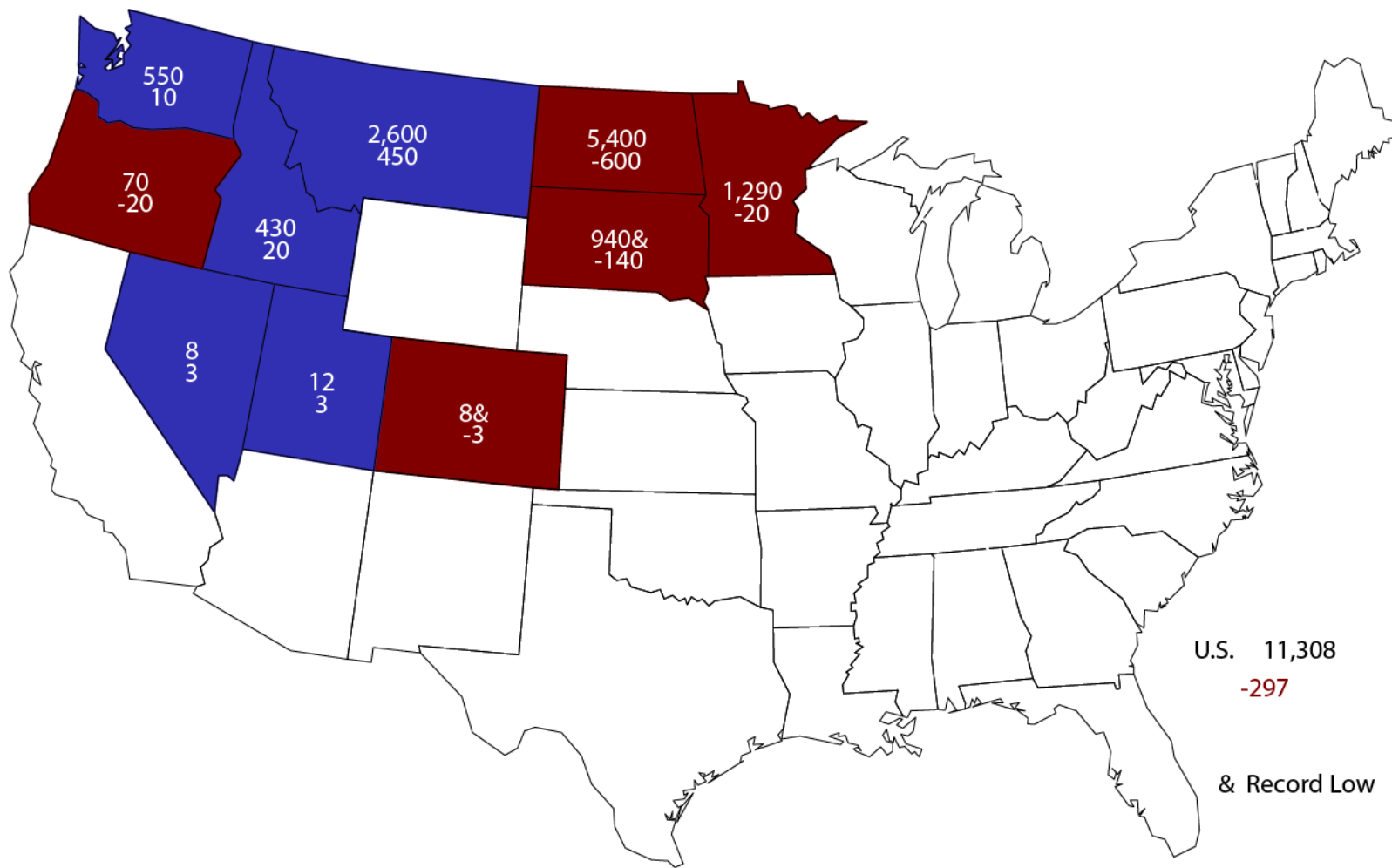
Other Spring Wheat Acres United States

Million Acres



2017 Other Spring Wheat Planted Area

(000) Acres and Change From Previous Year



U.S. 11,308
-297

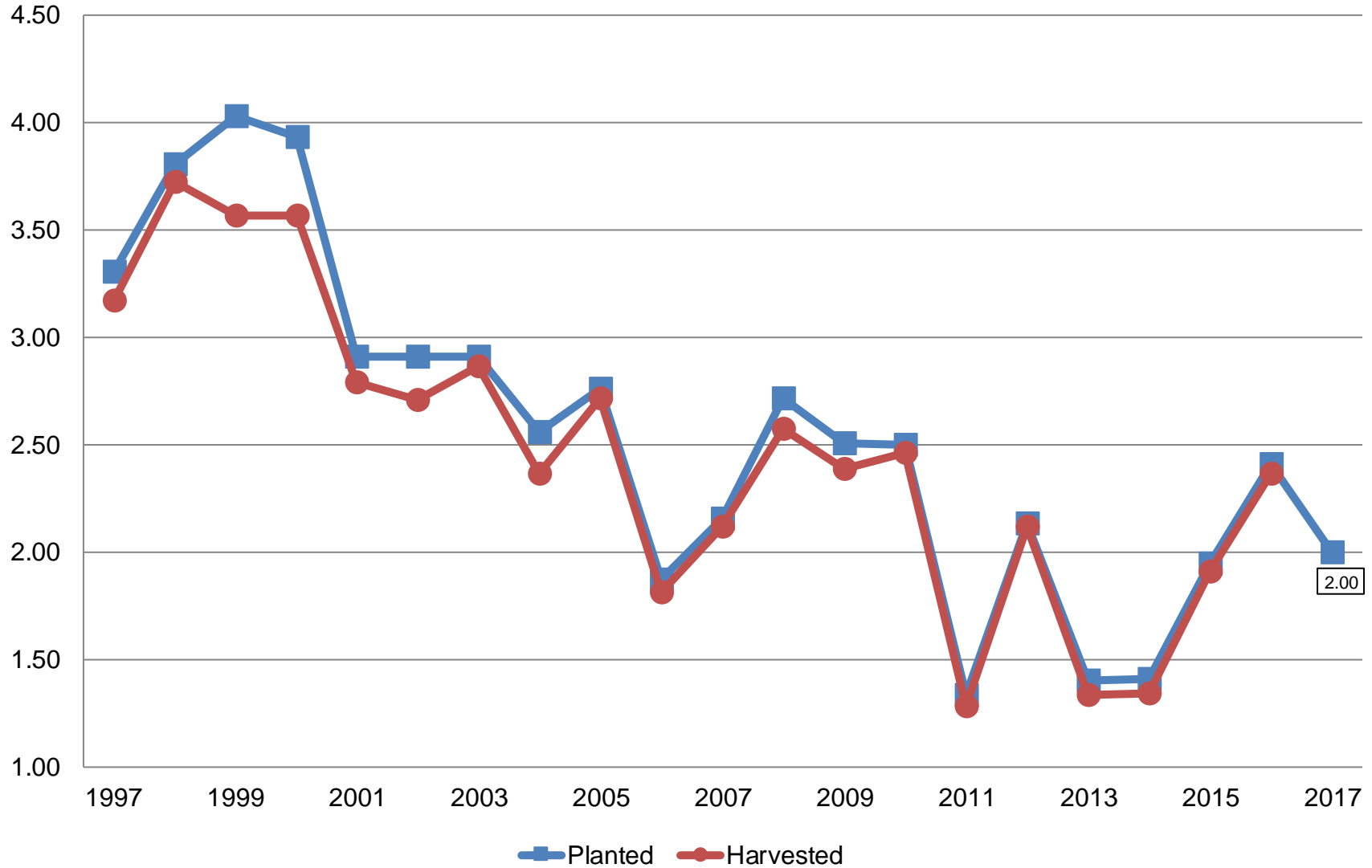
& Record Low



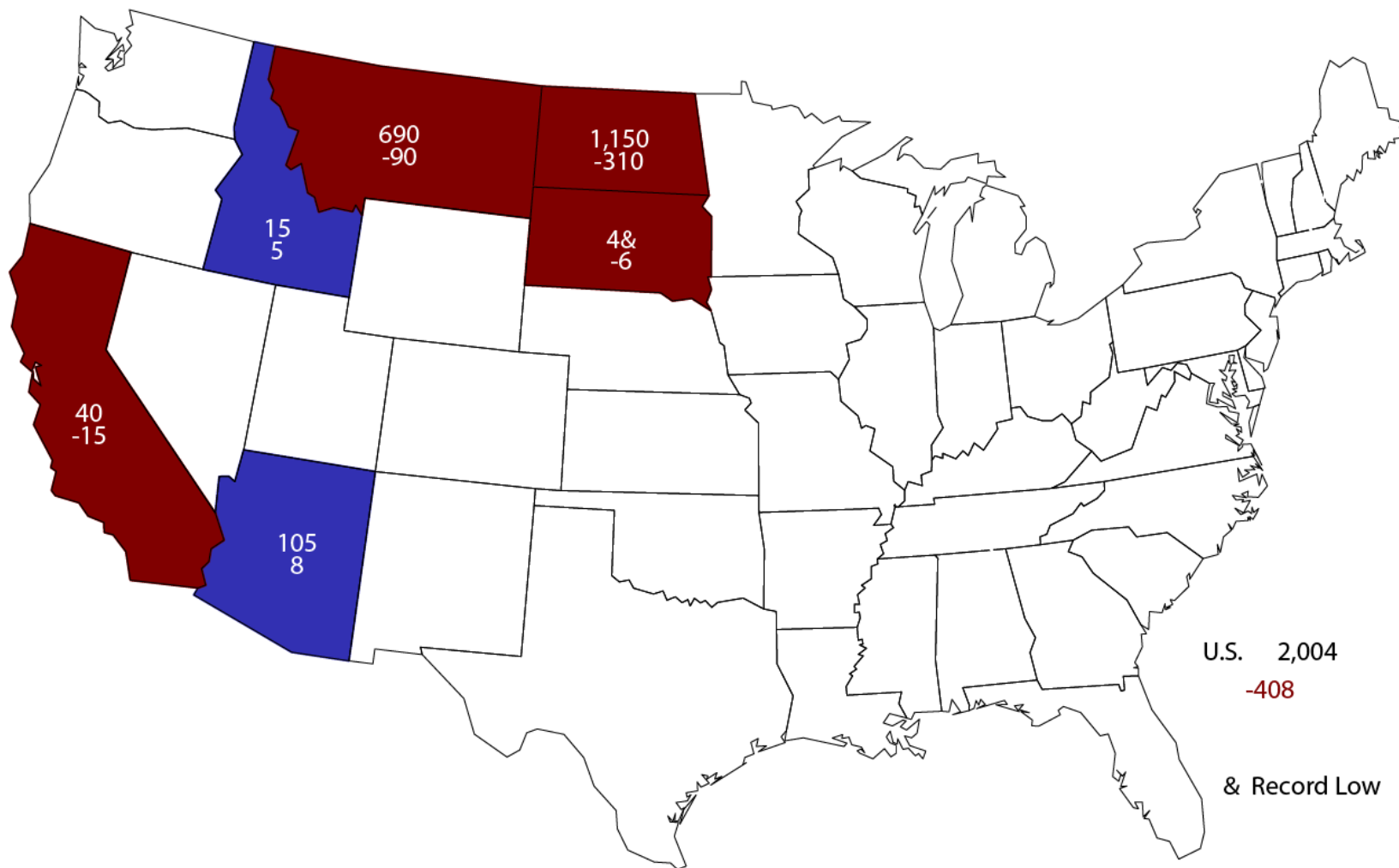
Durum Wheat Acres

United States

Million Acres



2017 Durum Wheat Planted Area (000) Acres and Change From Previous Year



U.S. 2,004
-408
& Record Low



March 2017 Prospective Plantings

Crop	Unit	March 2017	% Change From Previous Forecast	% Change From Previous Season
Feed Grains				
Corn	Mil Ac	90.0	NA	-4.3
Sorghum	Mil Ac	5.76	NA	-13.9
Oats	Mil Ac	2.70	NA	-4.6
Barley	Mil Ac	2.55	NA	-16.5



March 2017 Prospective Plantings

Crop	Unit	March 2017	% Change From Previous Forecast	% Change From Previous Season
Food Grains				
Wheat, All	Mil Ac	46.1	NA	-8.2
Wheat, Winter	Mil Ac	32.7	+1.1	-9.4
Wheat, Spring	Mil Ac	11.3	NA	-2.6
Wheat, Durum	Mil Ac	2.00	NA	-16.9
Rice	Mil Ac	2.63	NA	-16.6



March 2017 Prospective Plantings

Crop	Unit	March 2017	% Change From Previous Forecast	% Change From Previous Season
Oilseeds				
Soybeans	Mil Ac	89.5	NA	+7.3
Peanuts	Mil Ac	1.75	NA	+4.8
Sunflower	Mil Ac	1.45	NA	-8.9
Canola	Mil Ac	1.93	NA	+12.4
Flaxseed	Thou Ac	313	NA	-16.3
All Cotton	Mil Ac	12.2	NA	+21.4

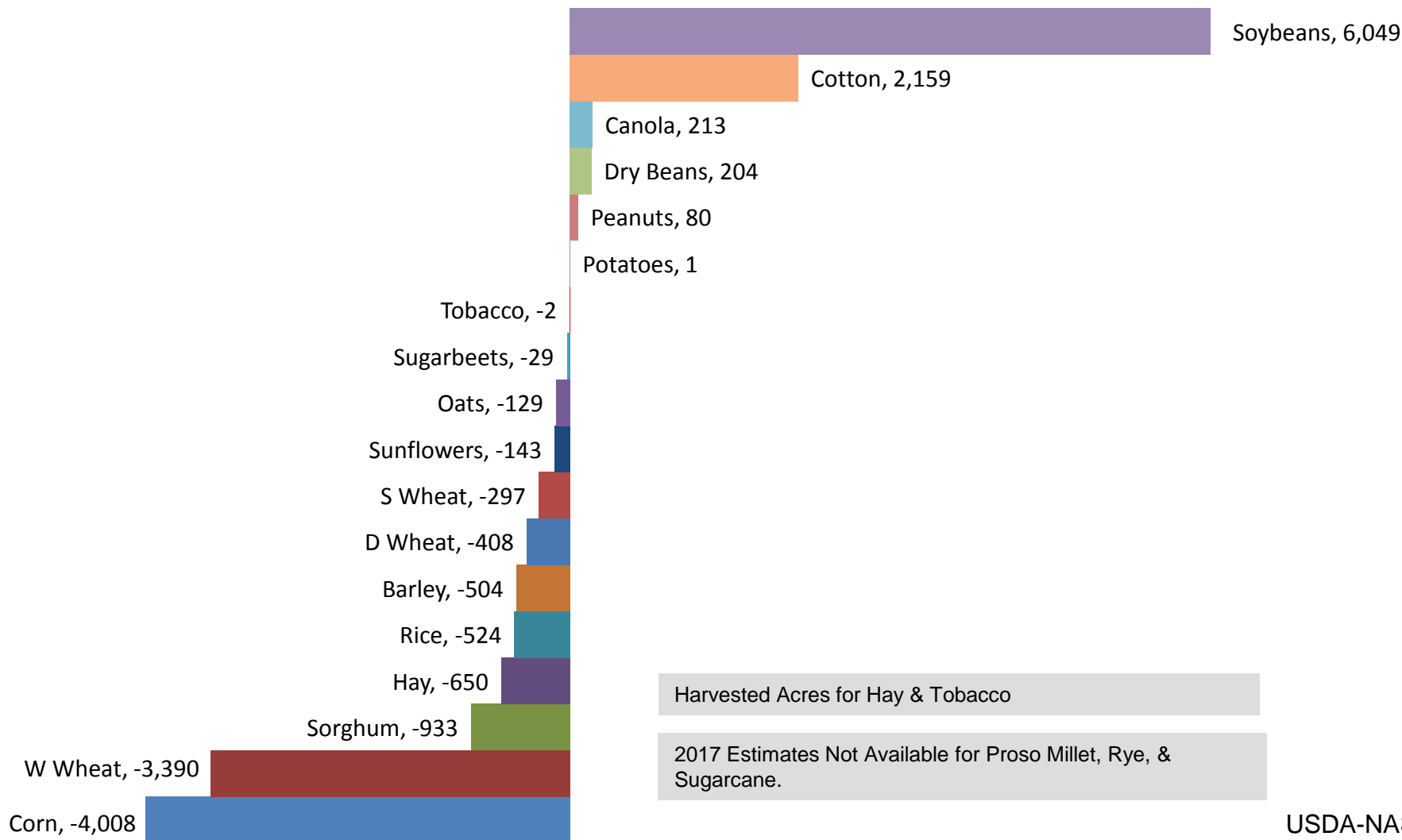


March 2017 Prospective Plantings

Crop	Unit	March 2017	% Change From Previous Forecast	% Change From Previous Season
Other Crops				
All Hay	Mil Ac	52.8	NA	-1.2
Sugarbeets	Mil Ac	1.13	NA	-2.5
Tobacco	Thou Ac	318	NA	-0.5
Spring Potatoes	Thou Ac	52.0	NA	+2.0
Dry Edible Beans	Mil Ac	1.87	NA	+12.3
Chickpeas	Thou Ac	498	NA	+53.1
Lentils	Mil Ac	1.06	NA	+13.1
Dry Edible Peas	Mil Ac	1.14	NA	-17.4
A. Winter Peas	Thou Ac	26.0	NA	-31.6
Sweet Potatoes	Thou Ac	158	NA	-5.8

Change in Planted Acres (000)

2017 Compared With 2016





March 2017 Grain Stocks

Crop	Unit	March 2017	% Change From Previous Estimate	% Change From Previous Year
Stocks				
Corn	Bil Bu	8.62	NA	+10.2
Soybeans	Bil Bu	1.73	NA	+13.3
Sorghum	Mil Bu	180	NA	-10.5
Rice	Mil Cwt	108	NA	-1.1

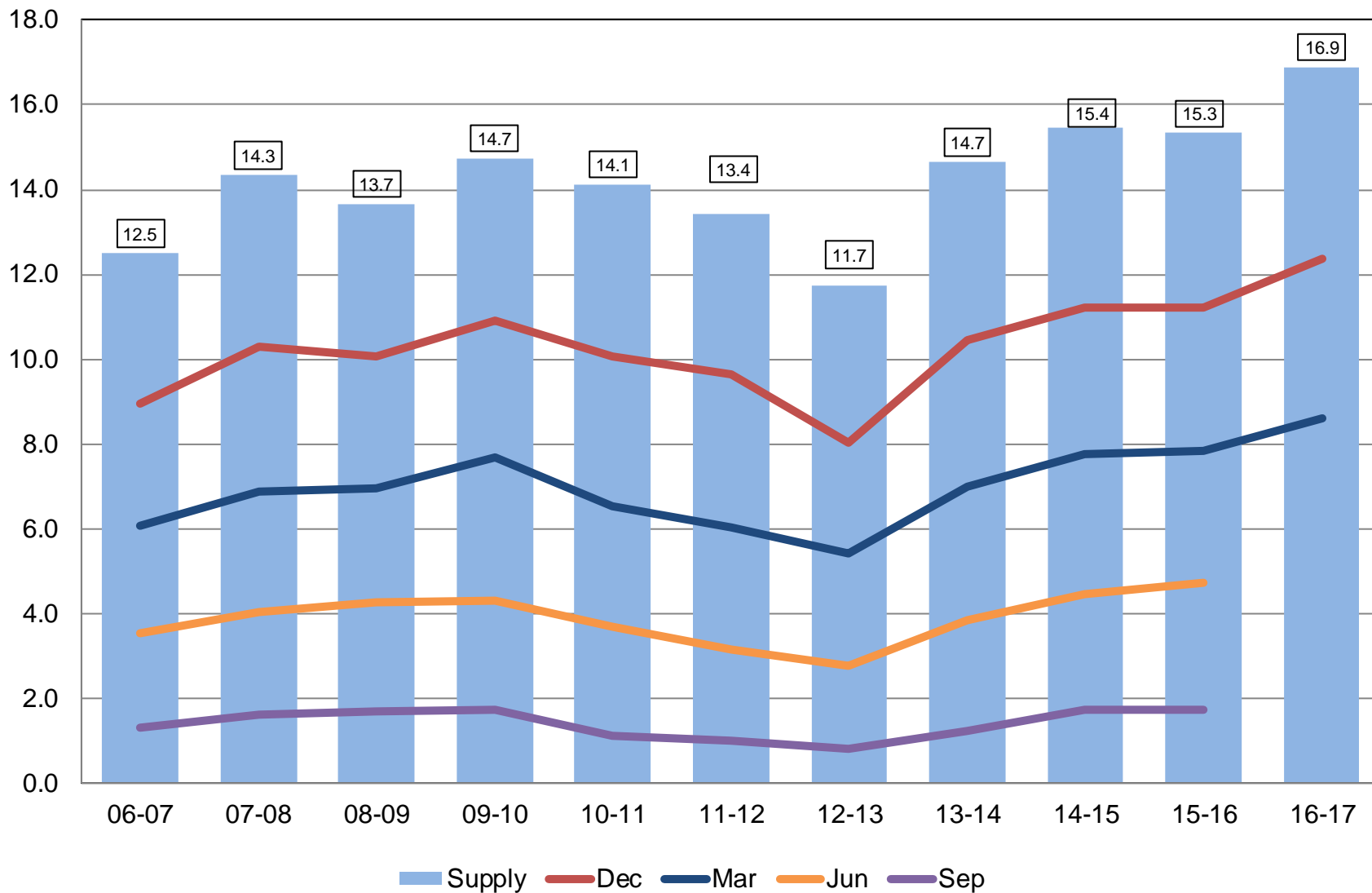


March 2017 Grain Stocks

Crop	Unit	March 2017	% Change From Previous Estimate	% Change From Previous Year
Stocks				
Wheat, All	Bil Bu	1.66	NA	+20.7
Barley	Mil Bu	147	NA	+6.6
Oats	Mil Bu	63.2	NA	-16.0

Corn Stocks United States

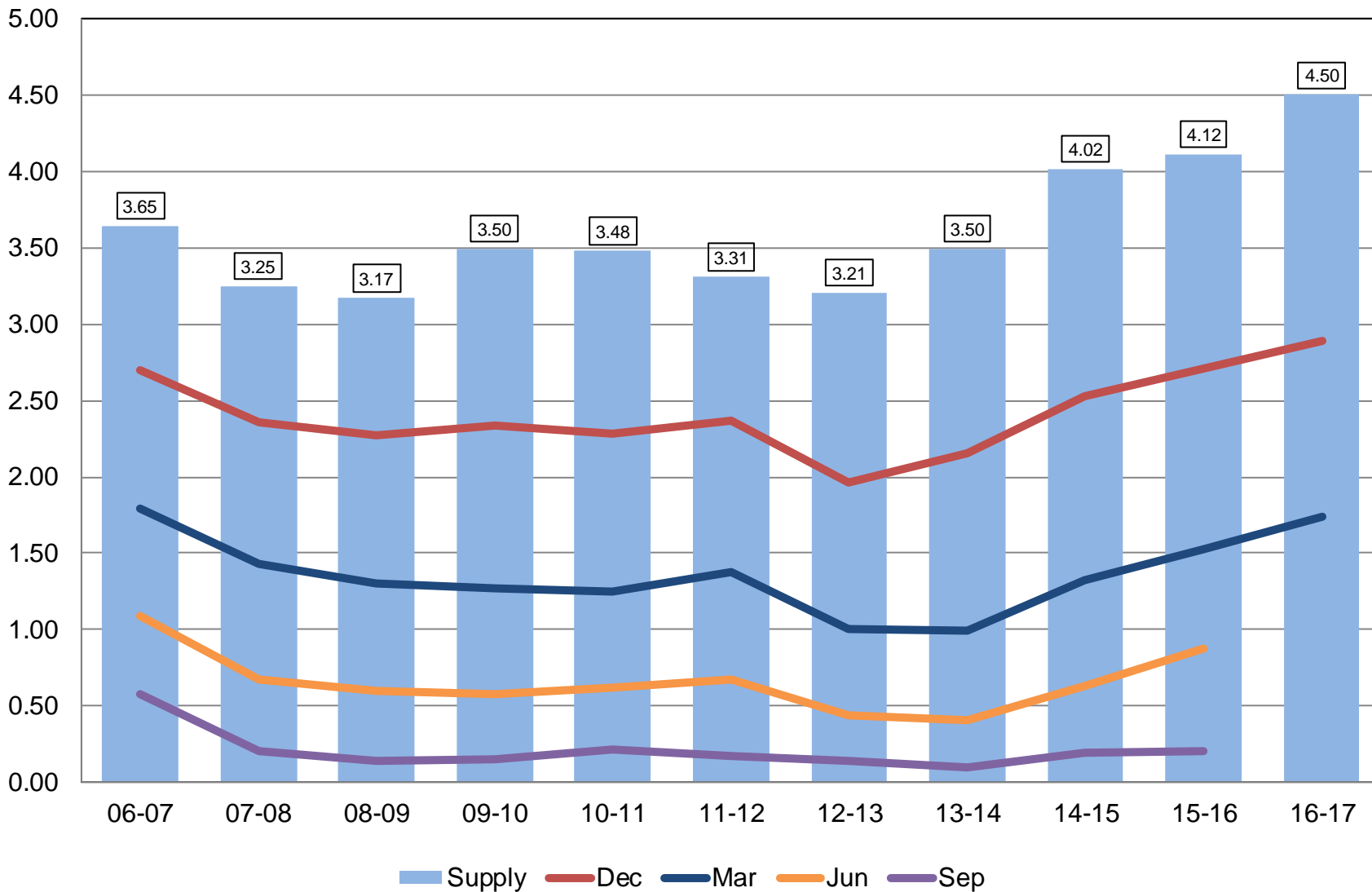
Billion Bushels





Soybean Stocks United States

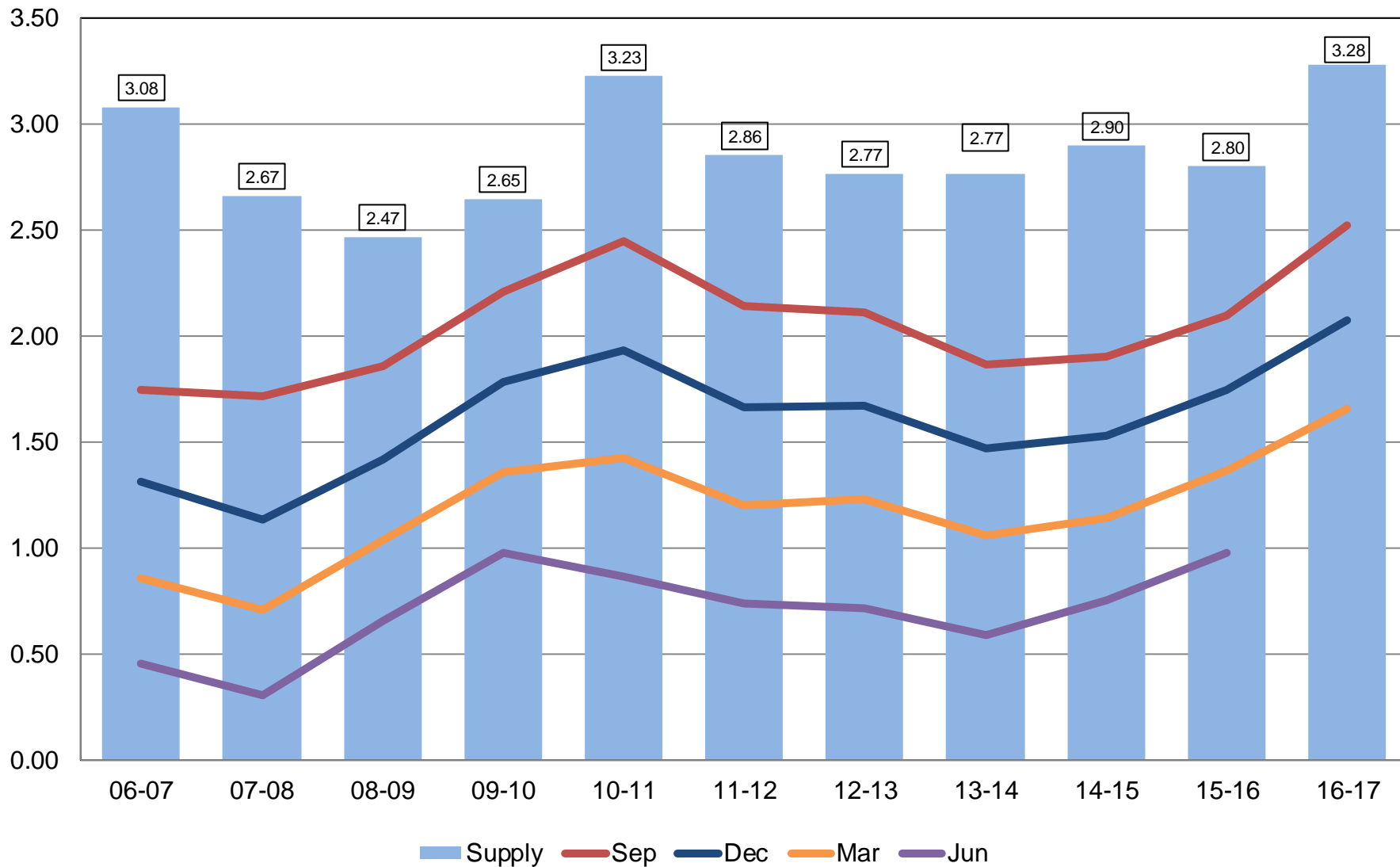
Billion Bushels





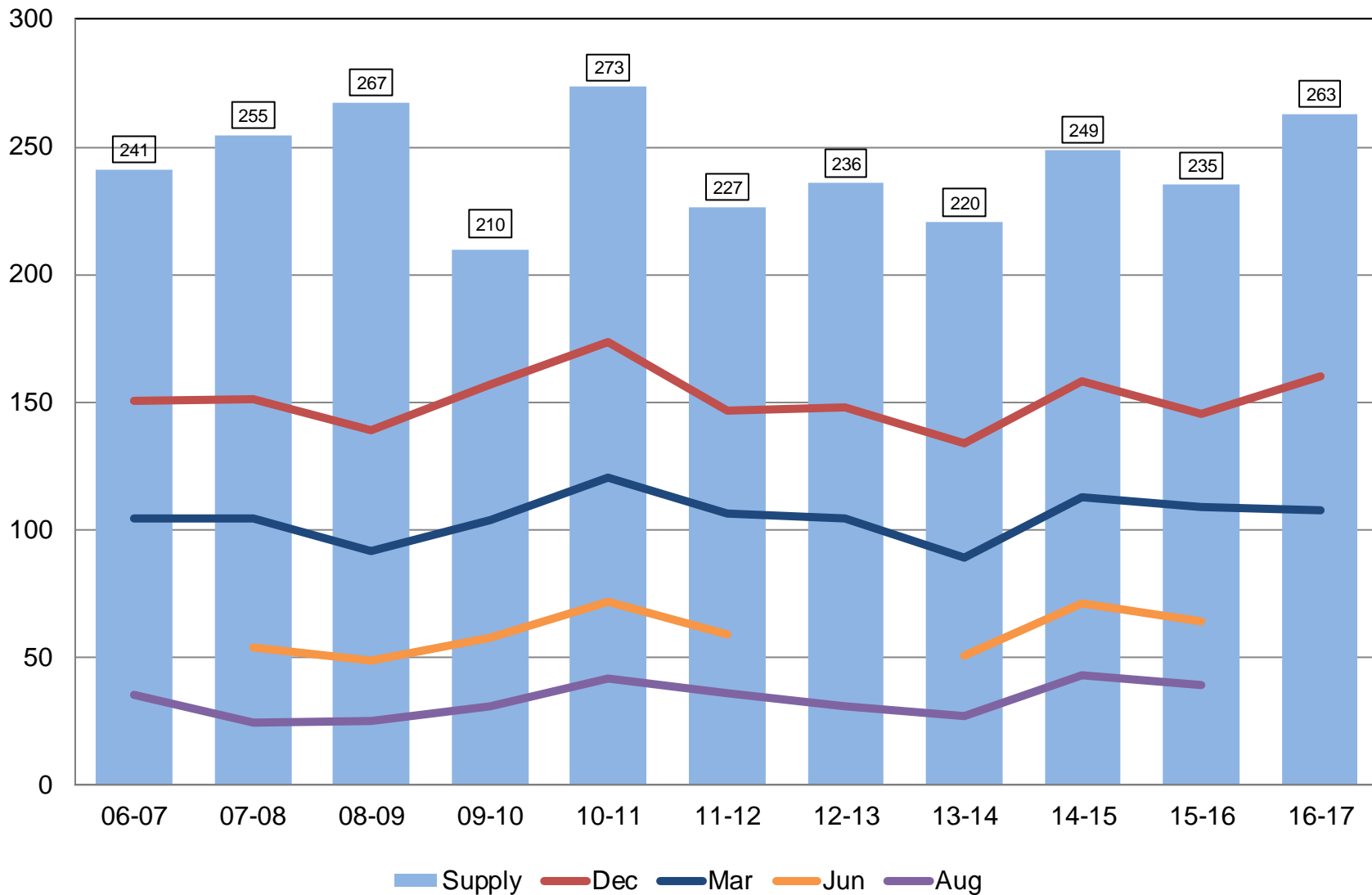
All Wheat Stocks United States

Billion Bushels



Rough Rice Stocks United States

Million Hundredweight





STAT CHAT SERIES

Ask NASS's Lance Honig about the Prospective Plantings and Grain Stocks Reports.



FRI, MAR 31 @ 1PM ET



@usda_nass

#STATCHAT



Upcoming Reports

Release Date	Report Title
April 3	CAIR: Cotton System CAIR: Fats & Oils CAIR: Grain Crushings Crop Progress
April 11	Crop Production
April 21	Cattle on Feed
April 27	Agricultural Prices
May 1	CAIR: Cotton System CAIR: Fats & Oils CAIR: Flour Milling CAIR: Flour Milling- Annual CAIR: Grain Crushings



United States Department of Agriculture
National Agricultural Statistics Service

All Reports Available At
www.nass.usda.gov

For Questions
202-720-2127
800-727-9540
nass@nass.usda.gov