



United States Department of Agriculture
National Agricultural Statistics Service

Crop Production - Annual
Grain Stocks
Rice Stocks
Cotton Ginnings
Winter Wheat and Canola Seedings
February Crop Production
Executive Summary

Lance Honig, Chief
Crops Branch

Contents

Field Crops	Stocks	Fruit & Nuts	Specialty Crops
Corn	Corn	Citrus	Potatoes
Soybeans	Soybeans		Sweet Potatoes
All Cotton	Sorghum		Peppermint Oil
Sorghum	Rice		Spearmint Oil
Rice	Hay		Hops
Hay & Forage	All Wheat		Taro (Hawaii)
Peanuts	Barley		
Proso Millet	Oats		
Minor Oilseeds			
Sugarcane			
Sugarbeets			
Tobacco			
Pulse Crops			
Winter Wheat			

Survey Overview

	December Ag Survey	Off-Farm Grain Stocks
Survey Type	Farmer Reported	Off-Farm Grain Stock Facilities
Collection Method	Mail, Phone, Internet, Personal Interview	Mail, Phone, Internet, Personal Interview
Crops Included	Field Crops	Corn, Soybeans, All Wheat, Durum Wheat, Barley, Oats, Sorghum, Pulse Crops
States	All except HI	All except AK, HI, and NV
Sample Size	81,967	~8,500
Collection Period	Nov 29 – Dec 19	Nov 30 – Dec 18



Principal Crops Planted Acreage

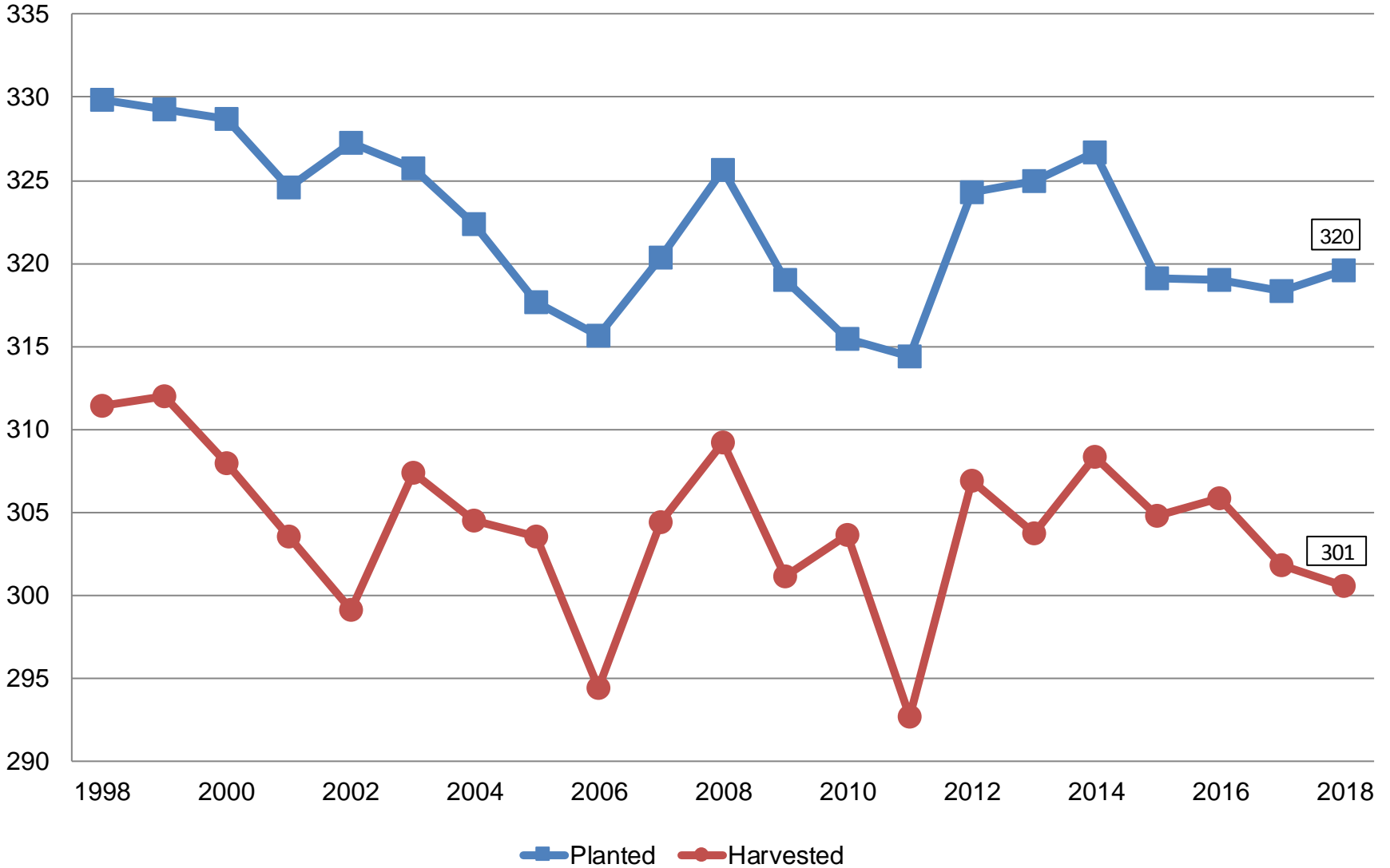
United States

Year	Principal Crops	Change From Previous Year
	<i>Million Acres</i>	
2009	319.0	-6.6
2010	315.4	-3.6
2011	314.3	-1.1
2012	324.3	+10.0
2013	324.9	+0.6
2014	326.7	+1.7
2015	319.1	-7.6
2016	319.0	-0.1
2017	318.3	-0.7
2018	319.6	+1.3



Principal Crops United States

Million Acres





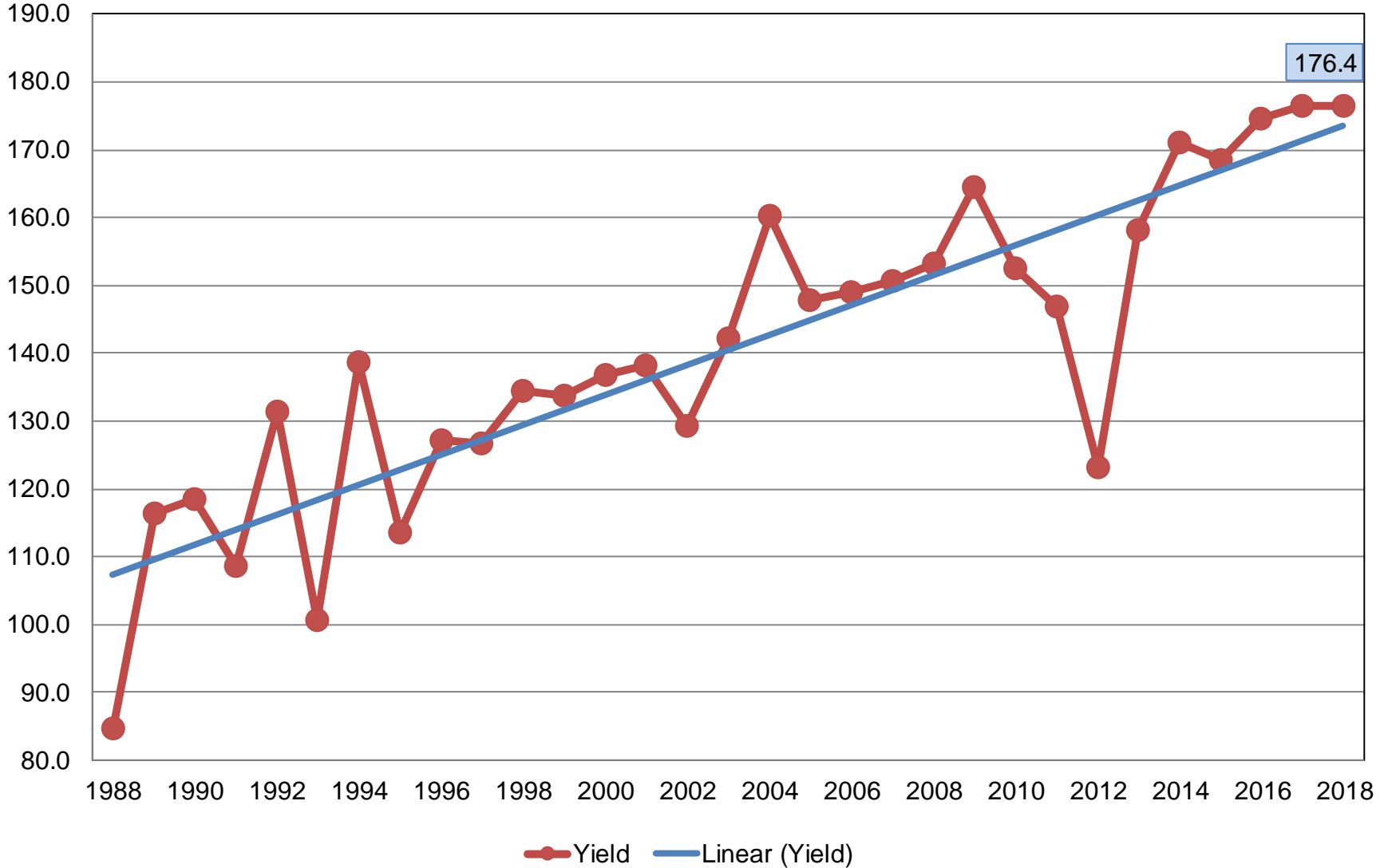
2018 Crop Production – Annual

Crop	Unit	February 2019	% Change From Previous Forecast	% Change From Previous Season
Corn				
Planted	Mil Ac	89.1	-<0.1	-1.2
Harvested	Mil Ac	81.7	-<0.1	-1.2
Yield	Bu/Ac	176.4	-1.4	-0.1
Production	Bil Bu	14.4	-1.4	-1.3
Stocks	Bil Bu	12.0	NA	-4.9



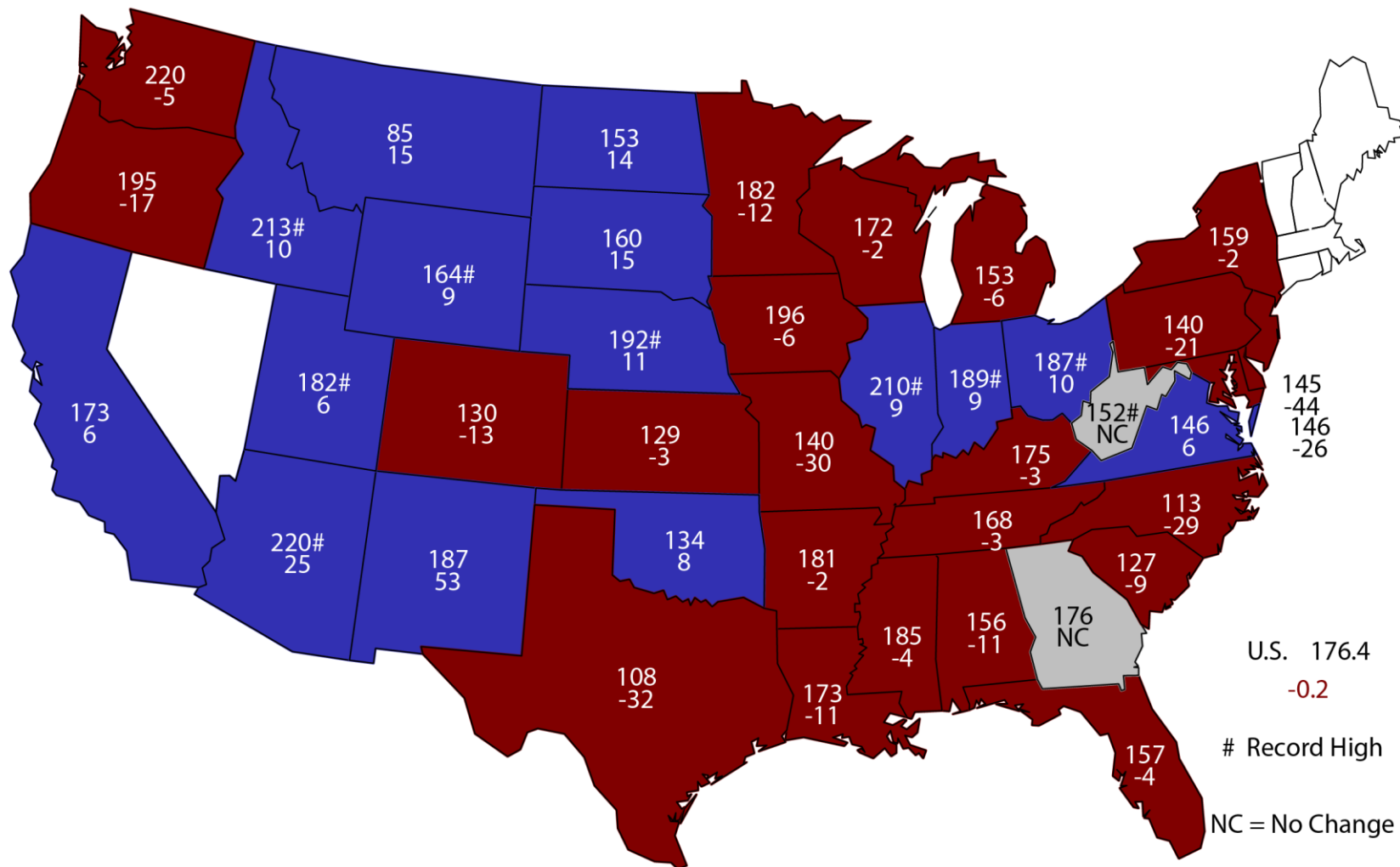
Corn for Grain Yield United States

Bushels per Acre



2018 Corn Yield

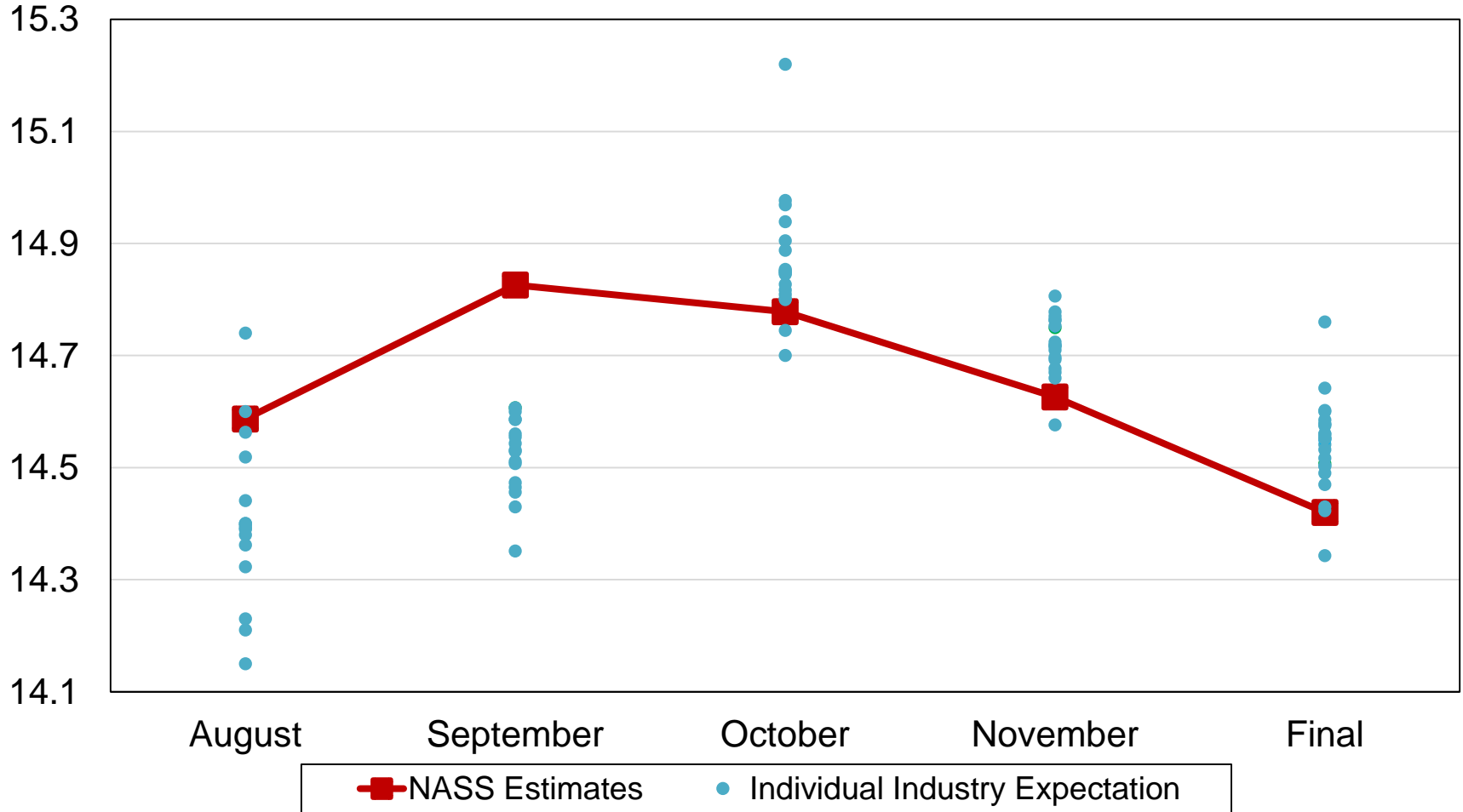
Bushels and Change From Previous Year



U.S. 176.4
-0.2
Record High
NC = No Change

2018 United States Corn Production Industry Expectations vs NASS

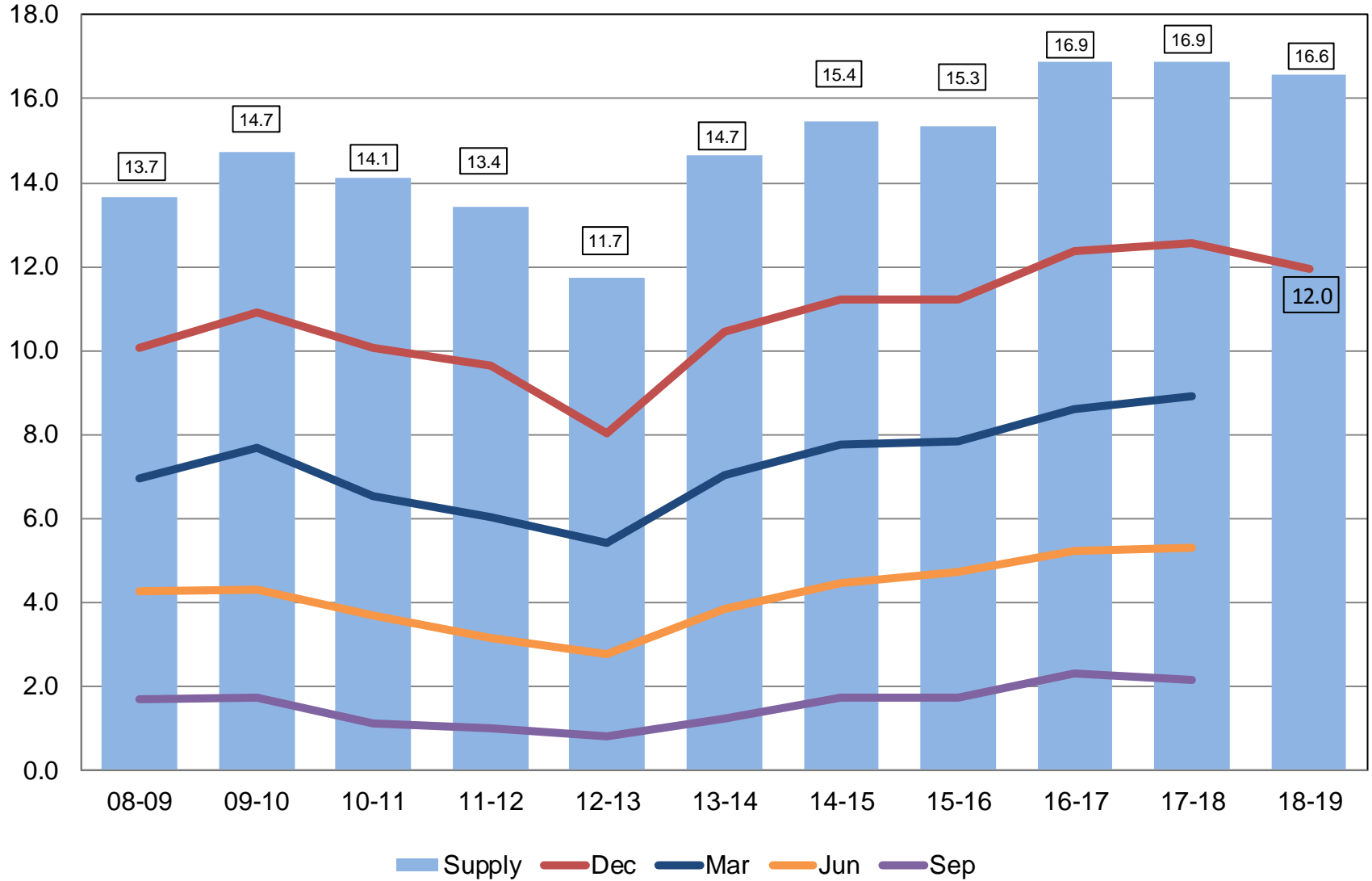
Billion Bushels





Corn Stocks United States

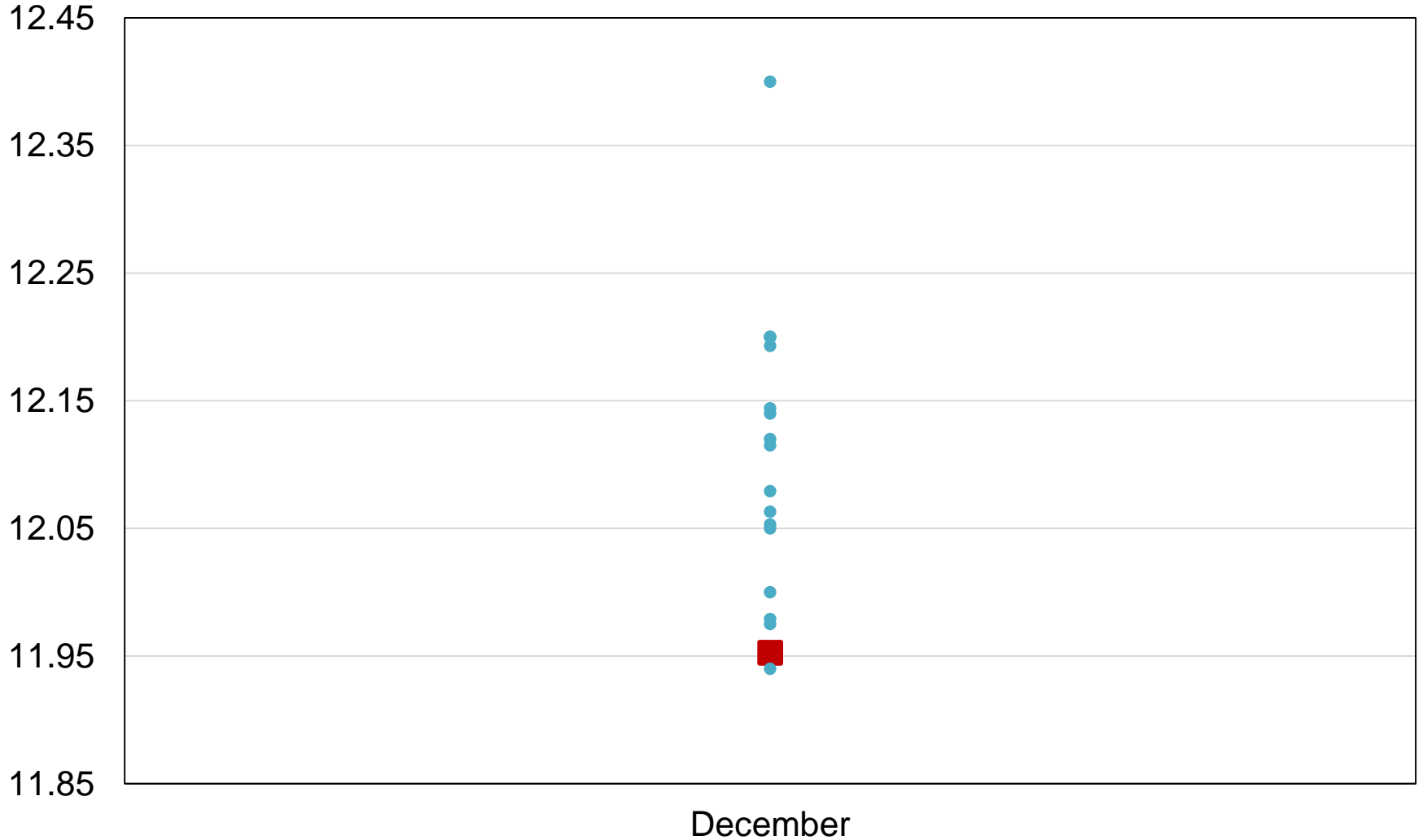
Billion Bushels





2018 United States Corn Stocks Industry Expectations vs NASS

Billion Bushels



 NASS Estimates  Individual Industry Expectation

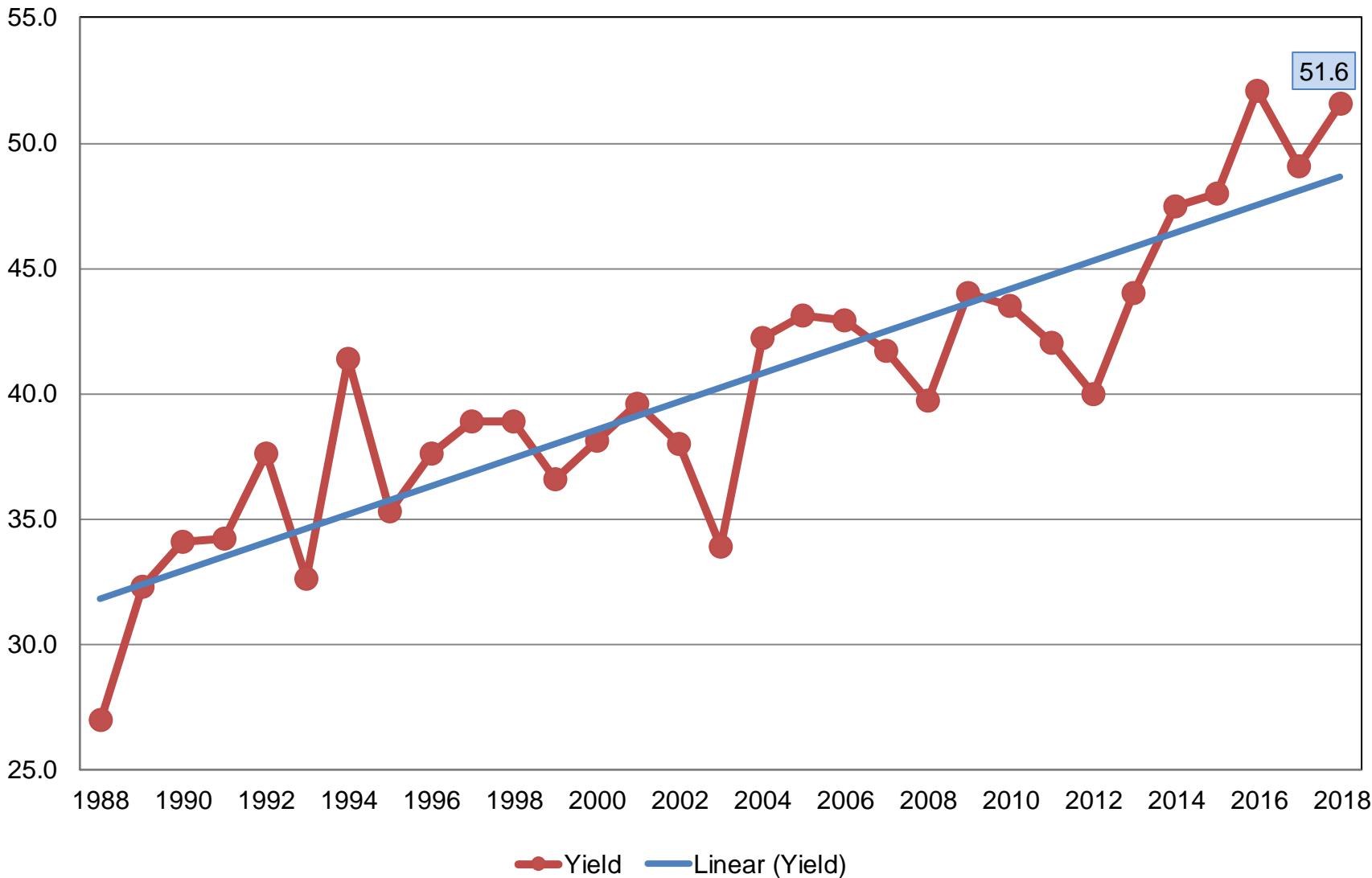


2018 Crop Production – Annual

Crop	Unit	February 2019	% Change From Previous Forecast	% Change From Previous Season
Soybeans				
Planted	Mil Ac	89.2	+0.1	-1.1
Harvested	Mil Ac	88.1	-0.3	-1.6
Yield	Bu/Ac	51.6	-1.0	+4.7
Production	Bil Bu	4.54	-1.2	+3.0
Stocks	Bil Bu	3.74	NA	+18.2

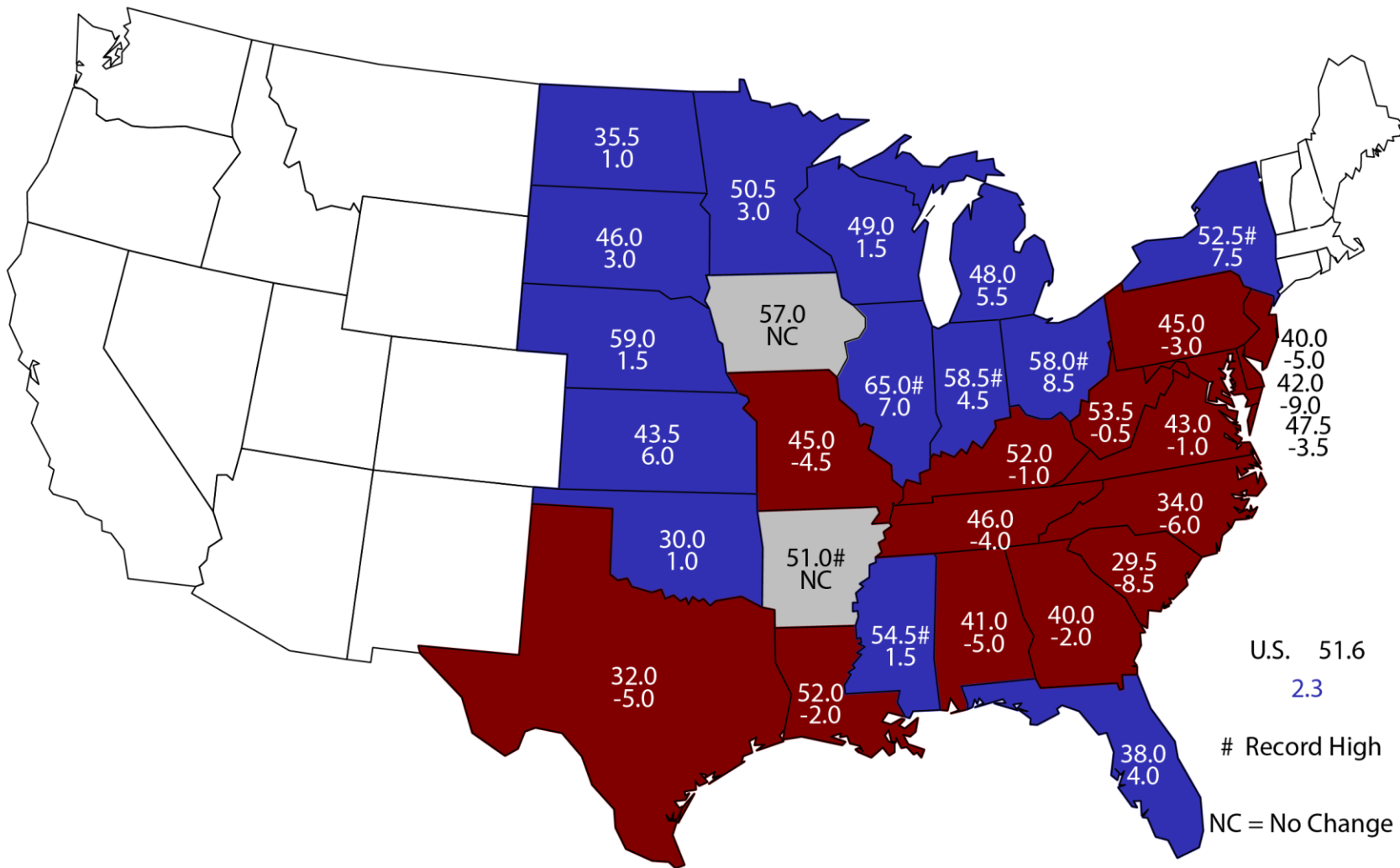
Soybean Yield United States

Bushels per Acre



2018 Soybean Yield

Bushels and Change From Previous Year

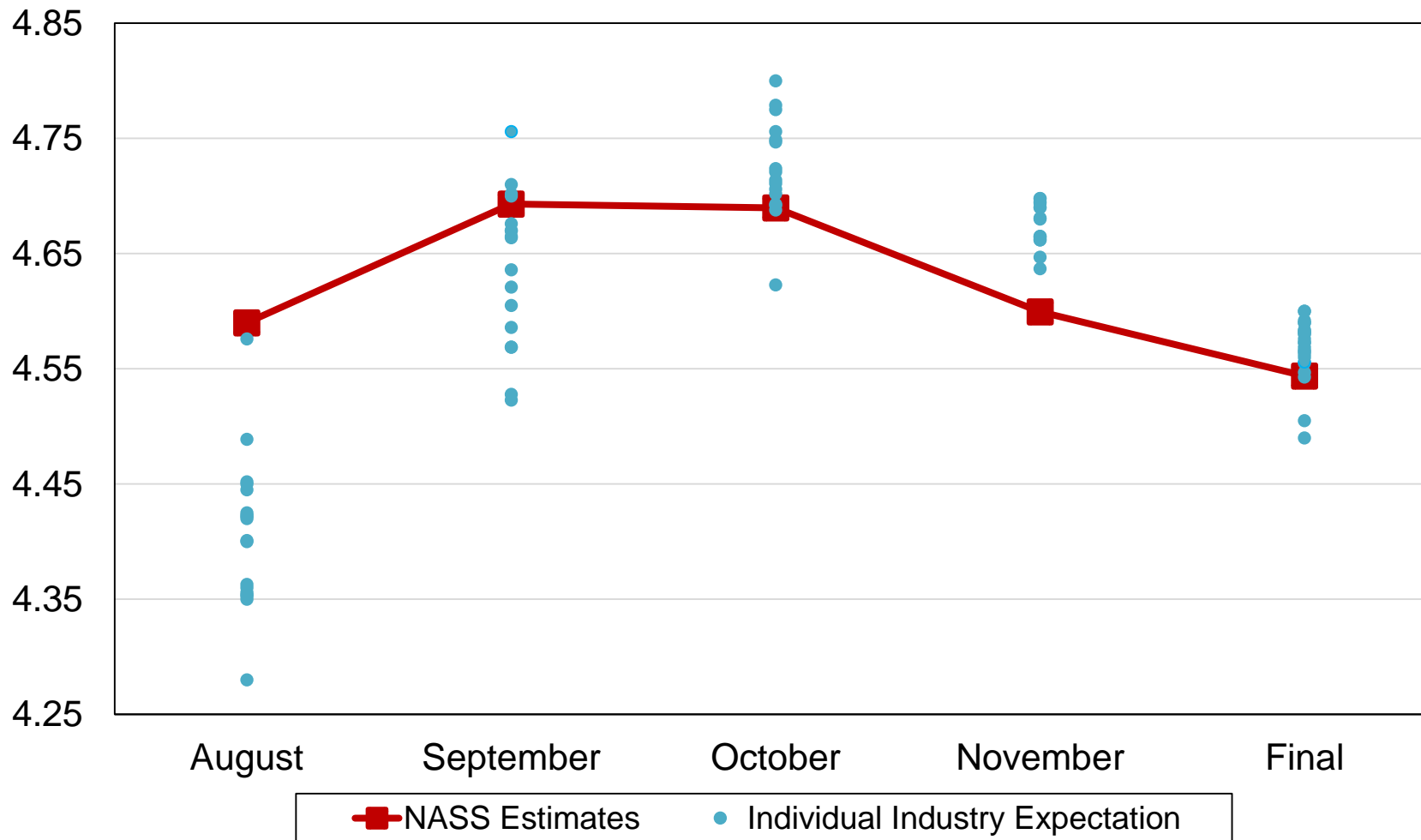


Record High

NC = No Change

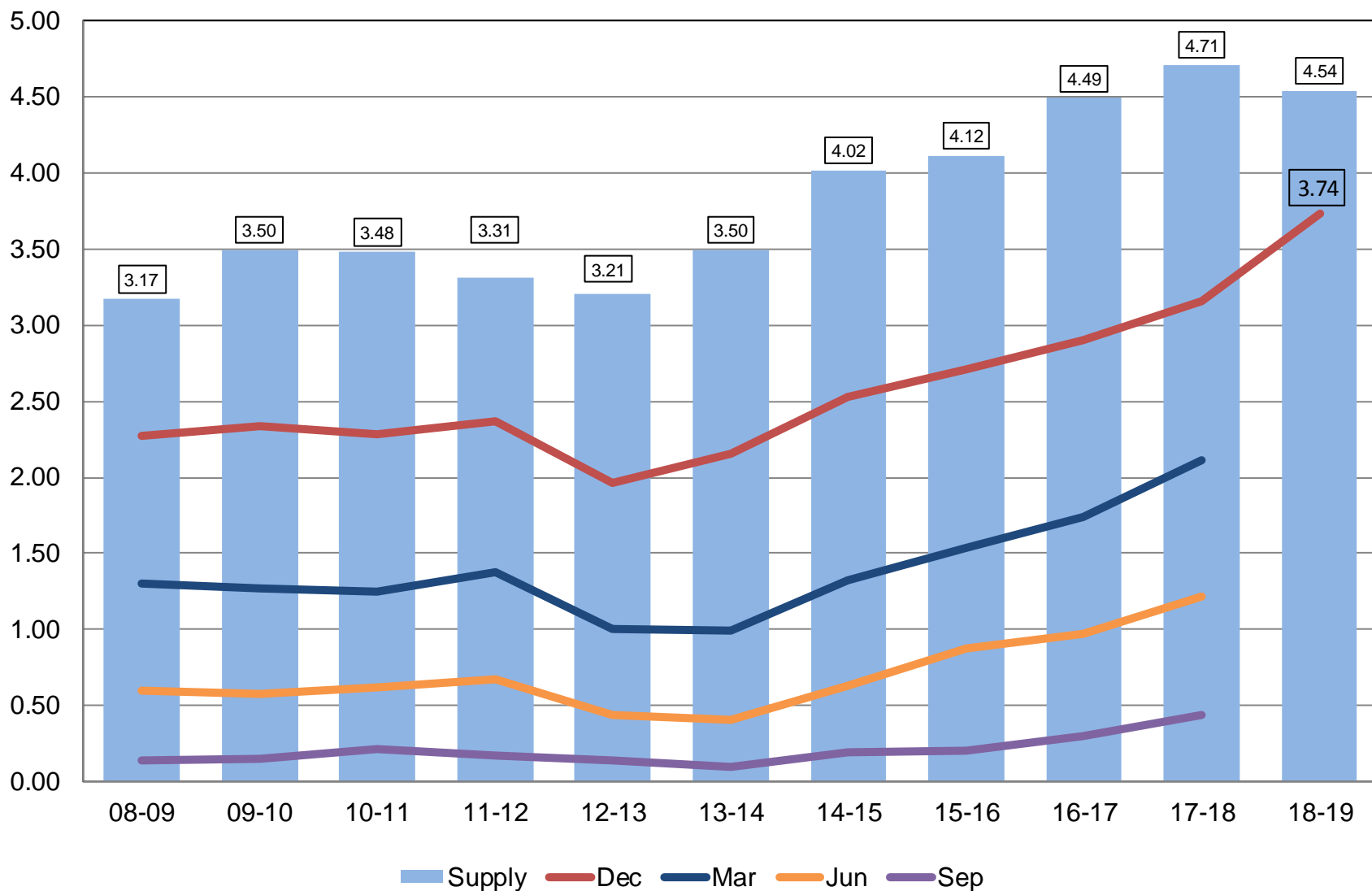
2018 United States Soybean Production Industry Expectations vs NASS

Billion Bushels



Soybean Stocks United States

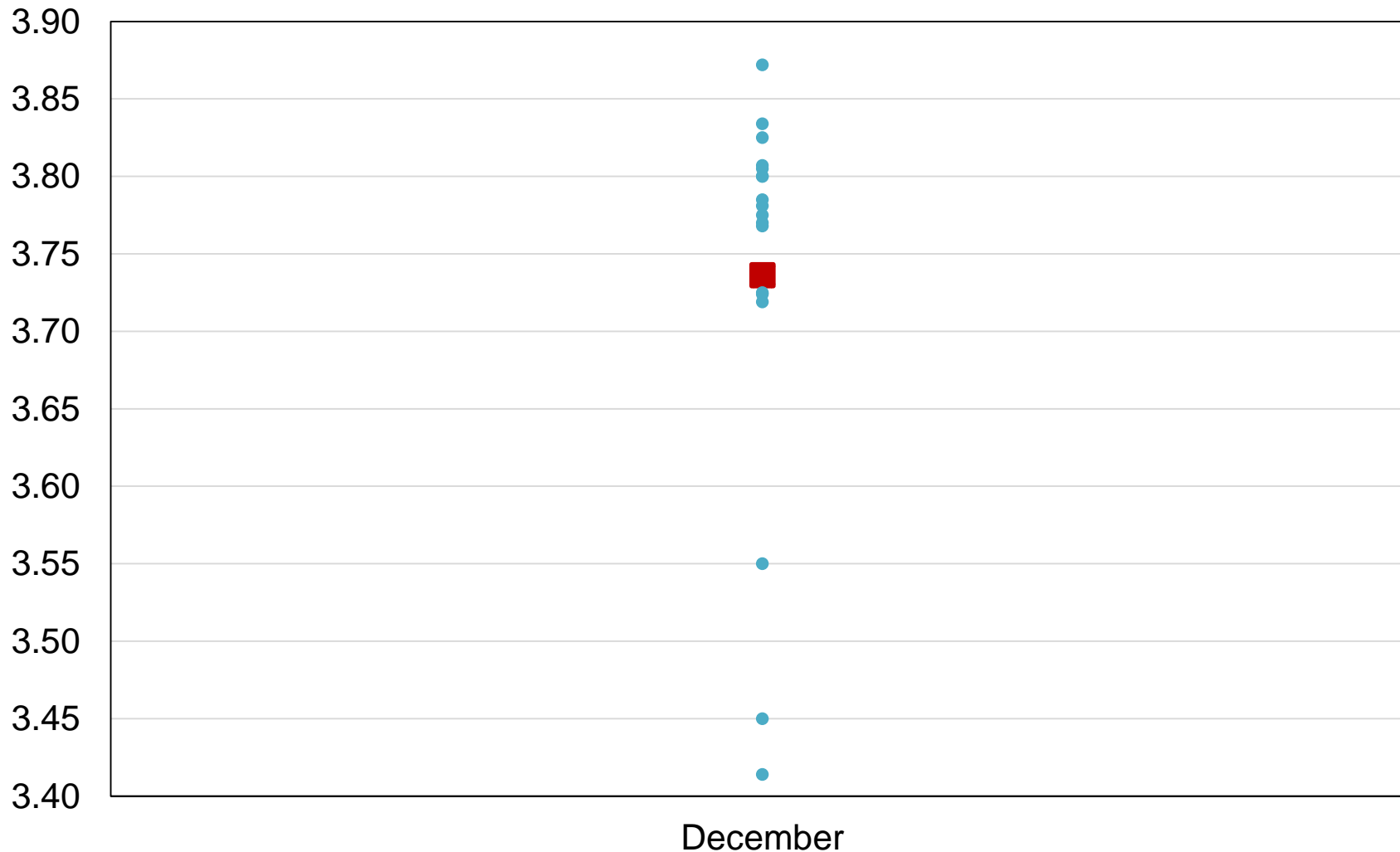
Billion Bushels







2018 United States Soybean Stocks Industry Expectations vs NASS

Billion Bushels



 NASS Estimates  Individual Industry Expectation

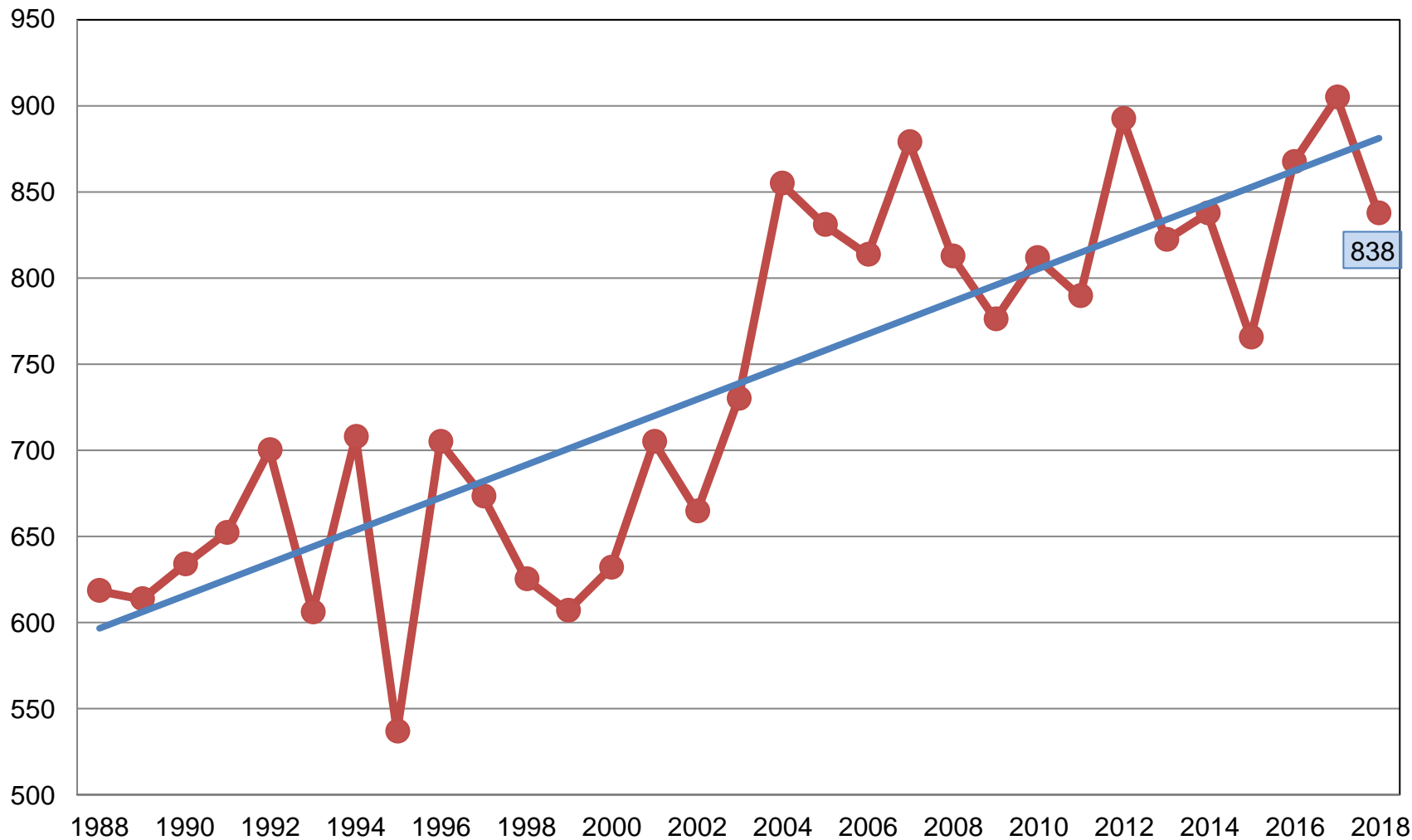


2018 Crop Production – Annual

Crop	Unit	February 2019	% Change From Previous Estimate	% Change From Previous Season
All Cotton				
Planted	Mil Ac	14.1	+0.4	+10.9
Harvested	Mil Ac	10.5	+1.5	-5.1
Yield	Lb/Ac	838	-2.6	-7.4
Production	Mil Bls	18.4	-1.1	-12.1
Cottonseed				
Production	Mil Tons	5.79	-1.1	-9.8

All Cotton Yield United States

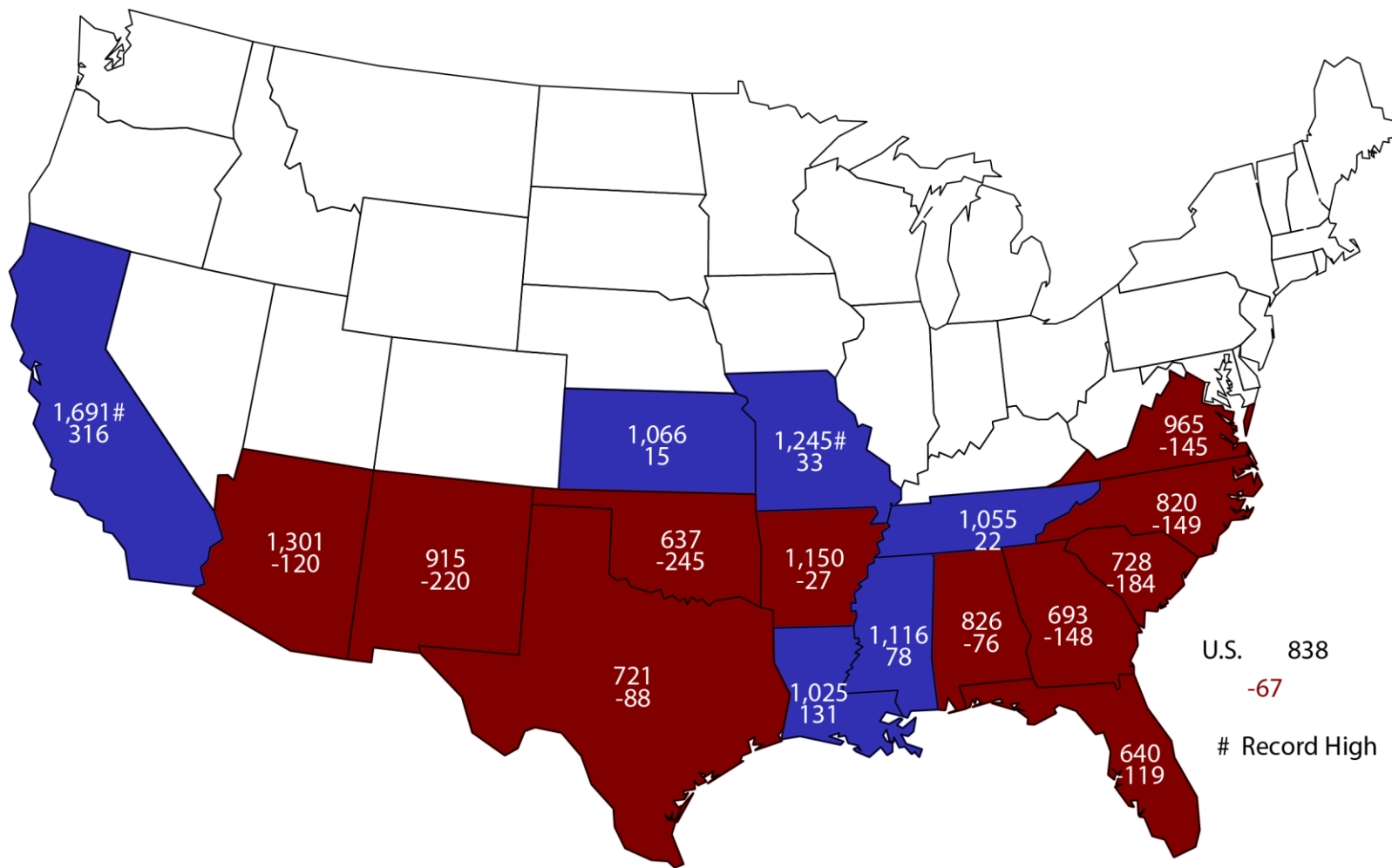
Pounds per Acre



● Yield — Linear (Yield)

2018 All Cotton Yield

Pounds and Change From Previous Year



U.S. 838
-67
Record High



2018 Crop Production – Annual

Crop	Unit	February 2019	% Change From Previous Forecast	% Change From Previous Season
Sorghum				
Planted	Mil Ac	5.69	-1.8	+1.1
Harvested	Mil Ac	5.06	-0.6	+0.3
Yield	Bu/Ac	72.1	+1.0	+0.6
Production	Mil Bu	365	+0.4	+0.9
Stocks	Mil Bu	246	NA	+8.3



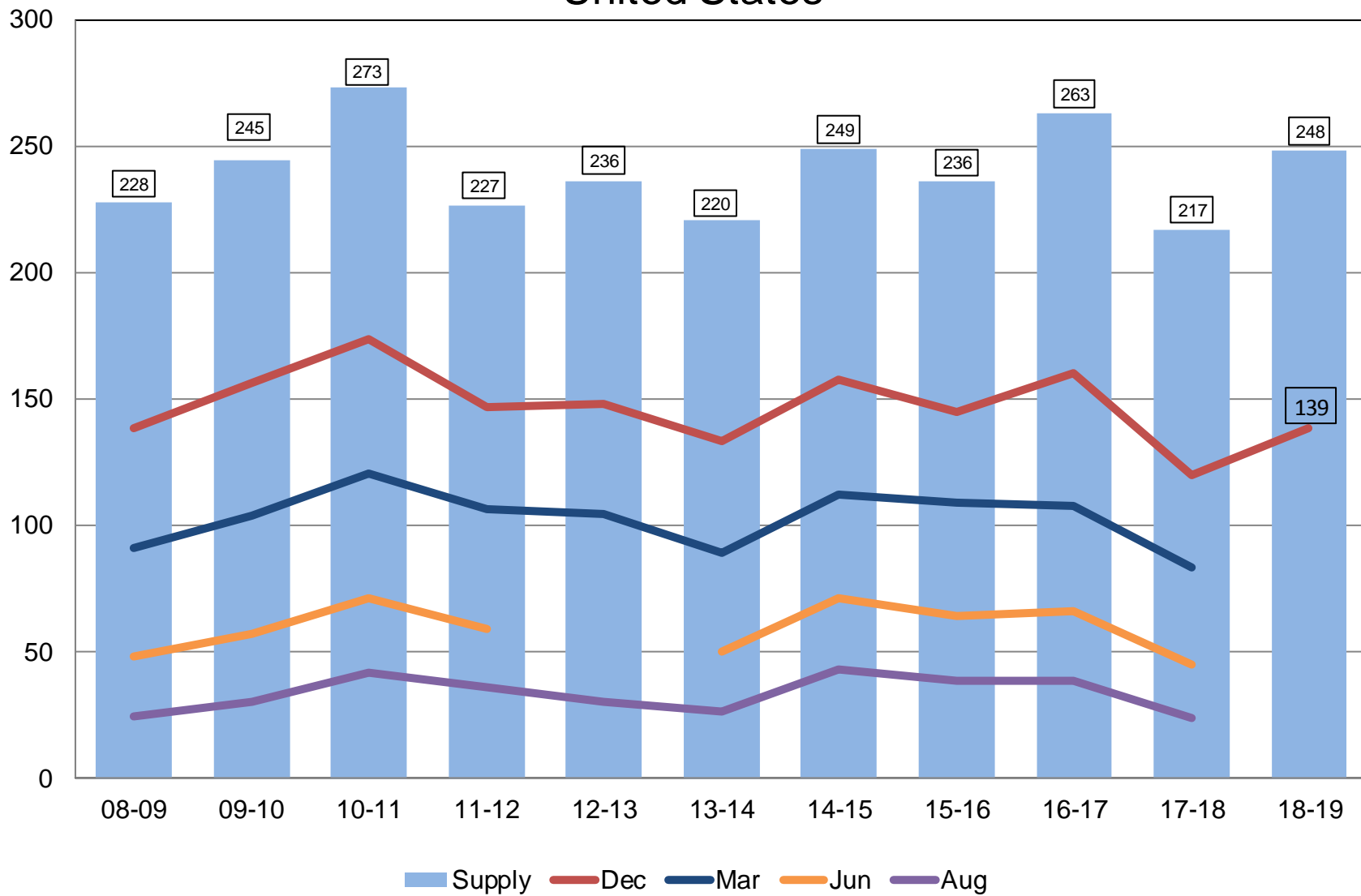
2018 Crop Production – Annual

Crop	Unit	February 2019	% Change From Previous Forecast	% Change From Previous Season
Rice				
Planted	Mil Ac	2.95	+0.1	+19.6
Harvested	Mil Ac	2.92	+0.4	+22.8
Yield	Lbs/Ac	7,692	+2.3	+2.5
Production	Mil Cwt	224	+2.7	+25.8
Stocks	Mil Cwt	139	NA	+15.9

Rough Rice Stocks

United States

Million Hundredweight



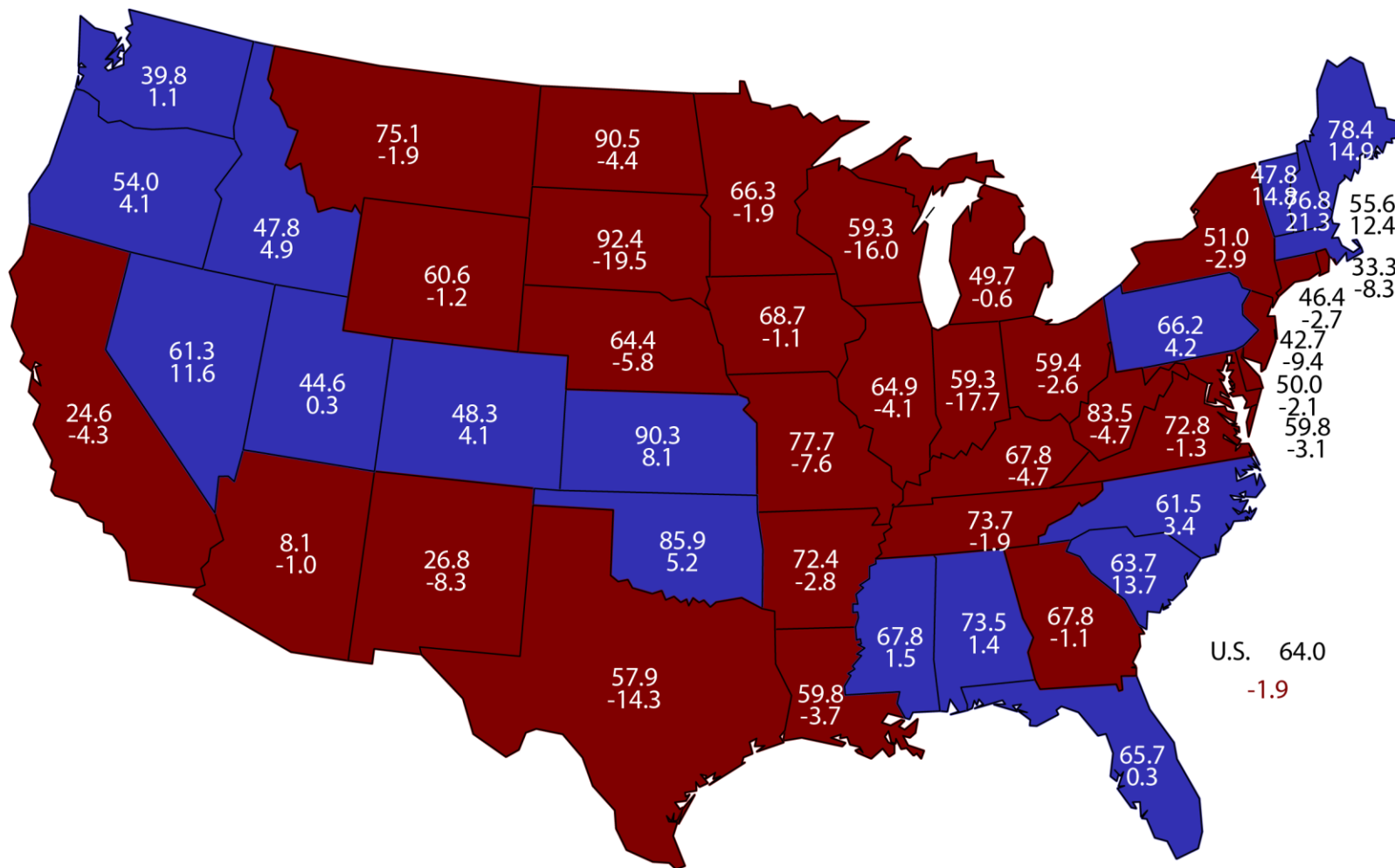


2018 Crop Production – Annual

Crop	Unit	February 2019	% Change From Previous Forecast	% Change From Previous Season
All Hay				
Harvested	Mil Ac	52.8	-4.0	+0.1
Yield	Tons/Ac	2.34	-4.1	-3.7
Production	Mil Tons	124	-8.0	-3.6
Stocks	Mil Tons	79.1	NA	-6.4

December 1, 2018 Hay Stocks/Production

Percent and Change From Previous Year





2018 Crop Production – Annual

Crop	Unit	February 2019	% Change From Previous Forecast	% Change From Previous Season
Production				
All Other Hay	Mil Tons	71.0	-5.2	-2.0
Alfalfa Hay	Mil Tons	52.6	-11.6	-5.7
Proso Millet	Mil Bu	12.0	NA	-19.5
Peanuts	Bil Lbs	5.46	-0.2	-23.2



2018 Crop Production – Annual

Crop	Unit	February 2019	% Change From Previous Forecast	% Change From Previous Season
Production				
Canola	Bil Lbs	3.62	-0.1	+18.4
Flaxseed	Mil Bu	4.47	NA	+16.2
Mustard Seed	Mil Lbs	73.1	NA	+24.2
Rapeseed	Mil Lbs	8.23	NA	-54.9
Safflower	Mil Lbs	236	NA	+34.3
Sunflowers	Bil Lbs	2.12	+9.4	-1.0



2018 Crop Production – Annual

Crop	Unit	February 2019	% Change From Previous Forecast	% Change From Previous Season
All Tobacco	Mil Lbs	533	-2.7	-24.9
Sugarbeets	Mil Tons	33.1	-1.1	-6.2
Sugarcane	Mil Tons	34.8	+2.9	+4.6



2018 Crop Production – Annual

Crop	Unit	February 2019	% Change From Previous Forecast	% Change From Previous Season
Production				
A. Winter Peas	Thou Cwt	124	-15.1	+24.0
Dry Peas	Mil Cwt	15.9	+14.8	+12.2
Dry Beans	Mil Cwt	37.5	-0.9	+4.3
Lentils	Mil Cwt	8.41	-4.3	+12.4
Wrinkled Seed	Thou Cwt	389	NA	+9.0



2018 Crop Production – Annual

Crop	Unit	February 2019	% Change From Previous Forecast	% Change From Previous Season
Production				
Potatoes	Mil Cwt	454	<+0.1	<-0.1
Sweet Potatoes	Mil Cwt	27.4	NA	-23.2
Peppermint Oil	Mil Lbs	5.38	NA	-6.5
Spearmint Oil	Mil Lbs	2.57	NA	-8.0
Taro (Hawaii)	Mil Lbs	2.99	NA	-19.0
Hops	Mil Lbs	107	NA	+1.2

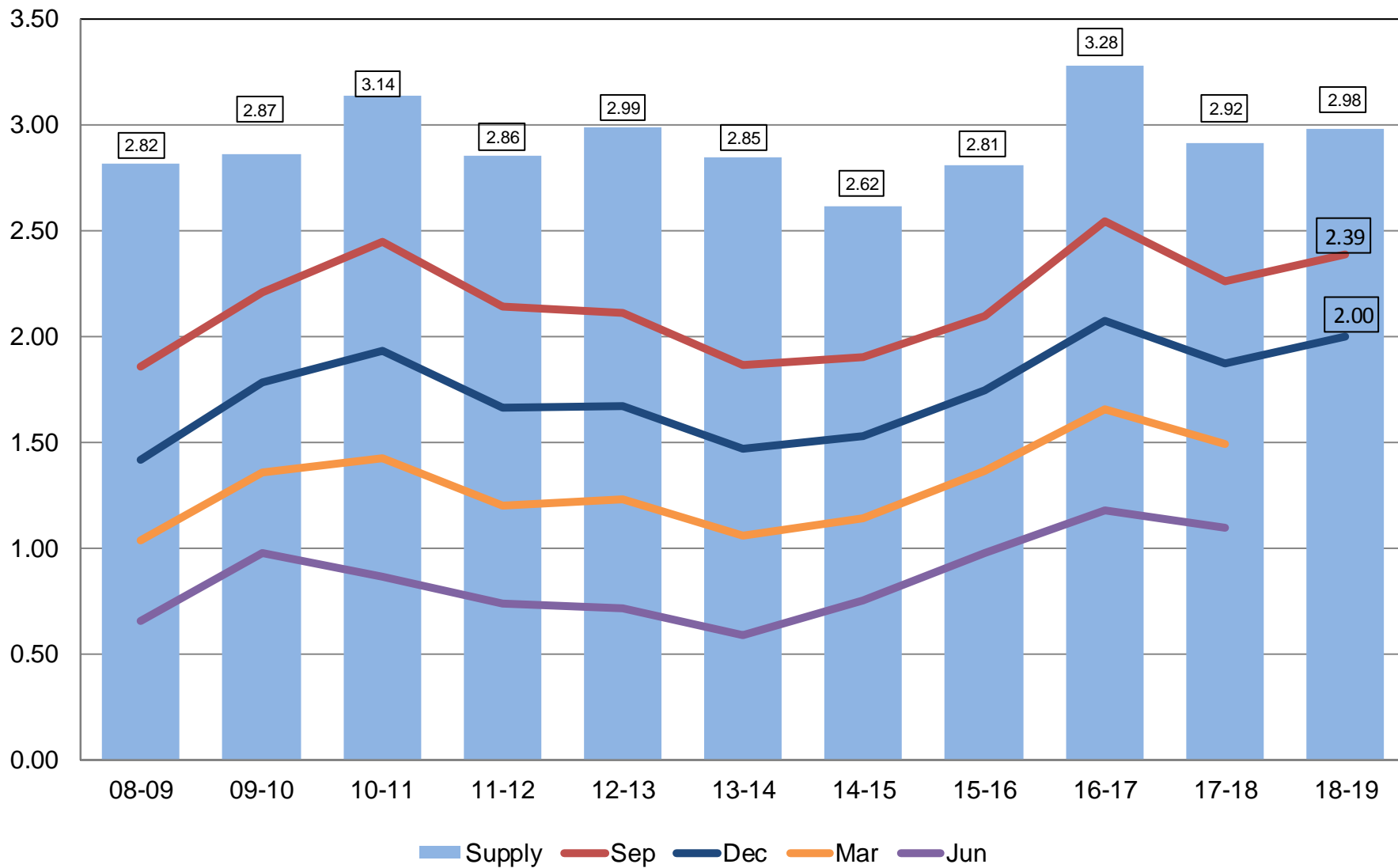


2018 Crop Production – Annual

Crop	Unit	February 2019	% Change From Previous Estimate	% Change From Previous Year
Stocks				
All Wheat	Bil Bu	2.00	NA	+6.7
Barley	Mil Bu	153	NA	-3.9
Oats	Mil Bu	67.2	NA	+1.2

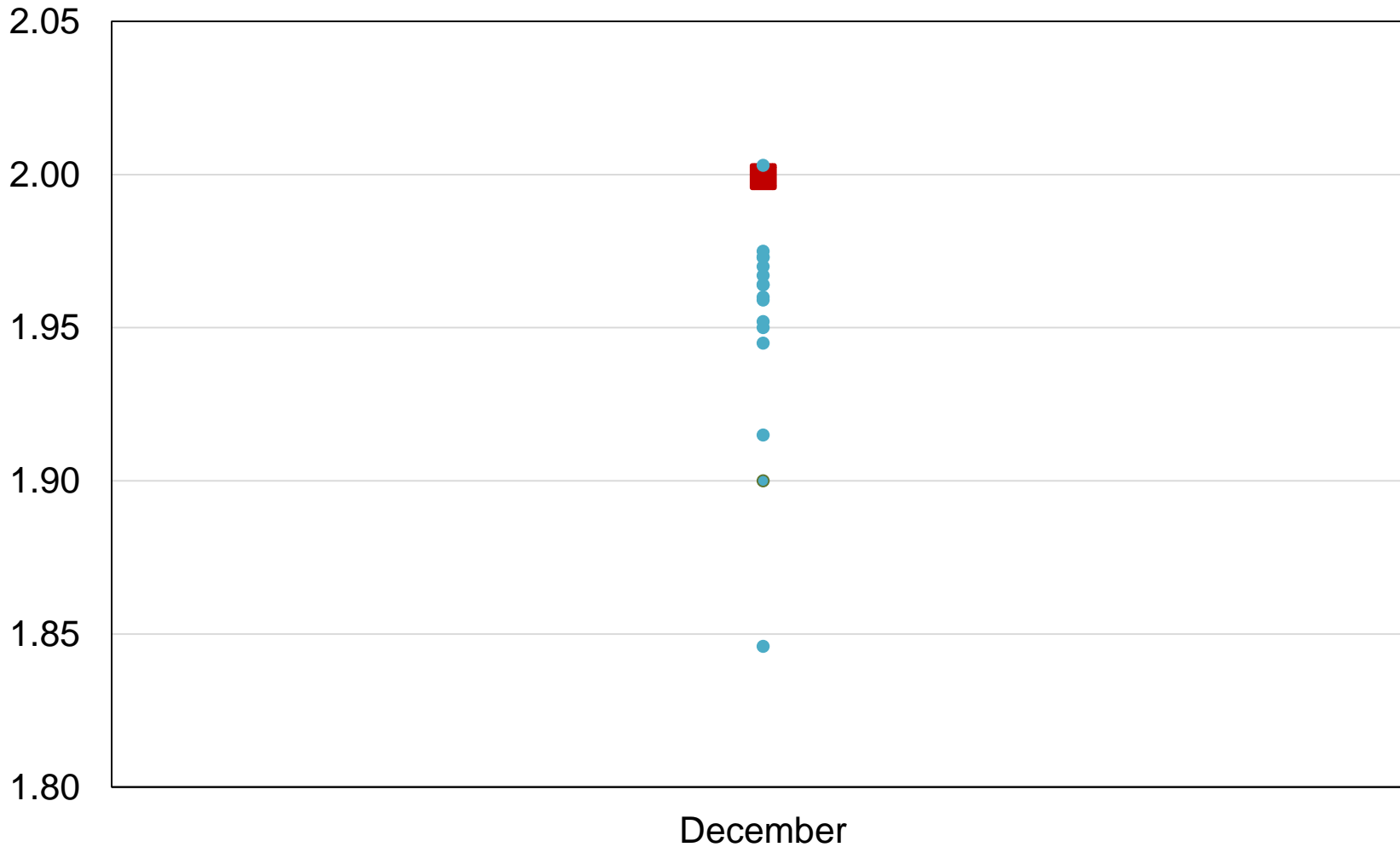
All Wheat Stocks United States

Billion Bushels



2018 United States All Wheat Stocks Industry Expectations vs NASS

Billion Bushels



■ NASS Estimates ● Individual Industry Expectation



Winter Wheat Seedings

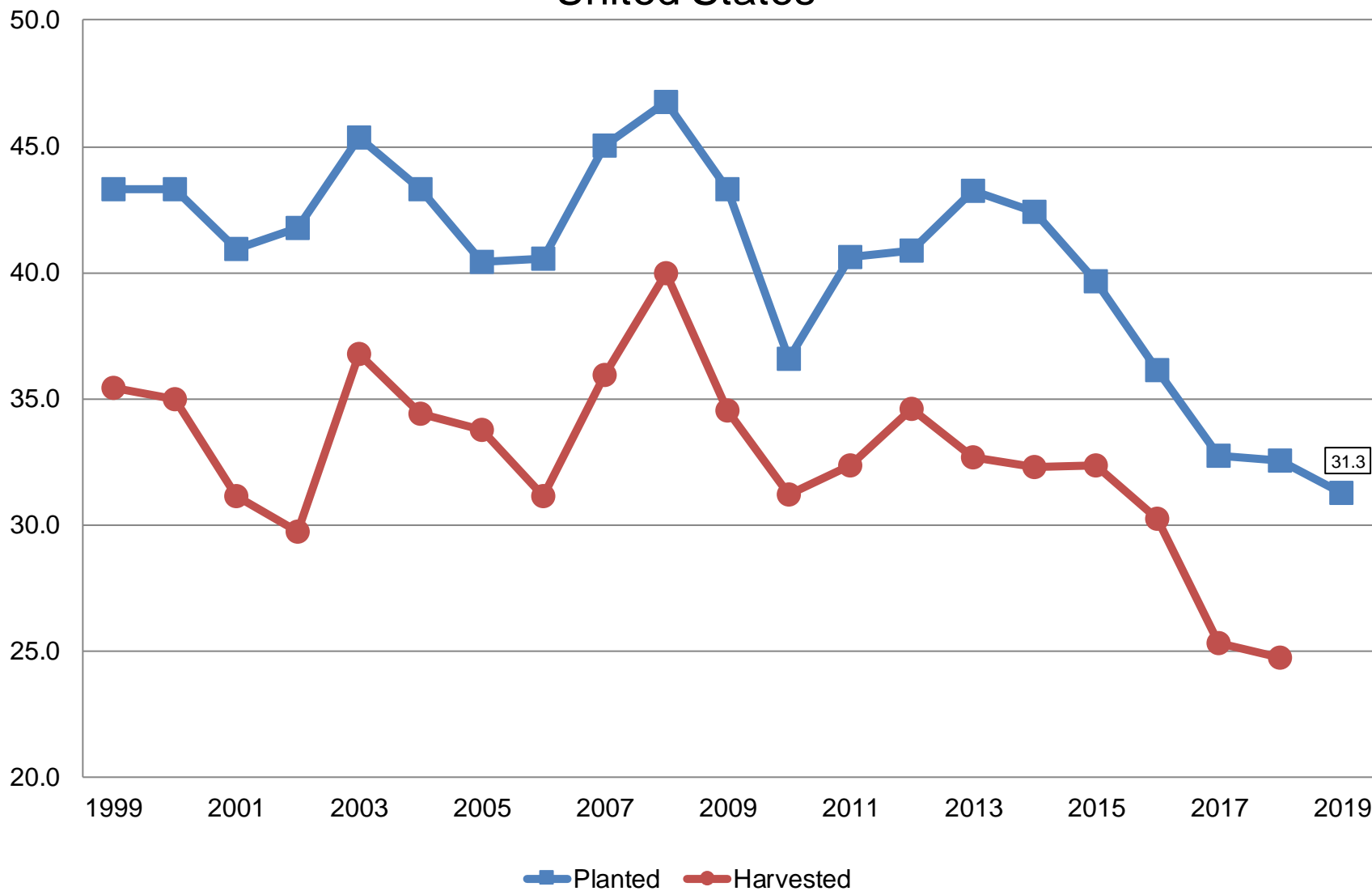
Crop	Unit	February 2019	% Change From Previous Forecast	% Change From Previous Season
Wheat, Winter				
Planted	Mil Ac	31.3	NA	-3.8



Winter Wheat Acres

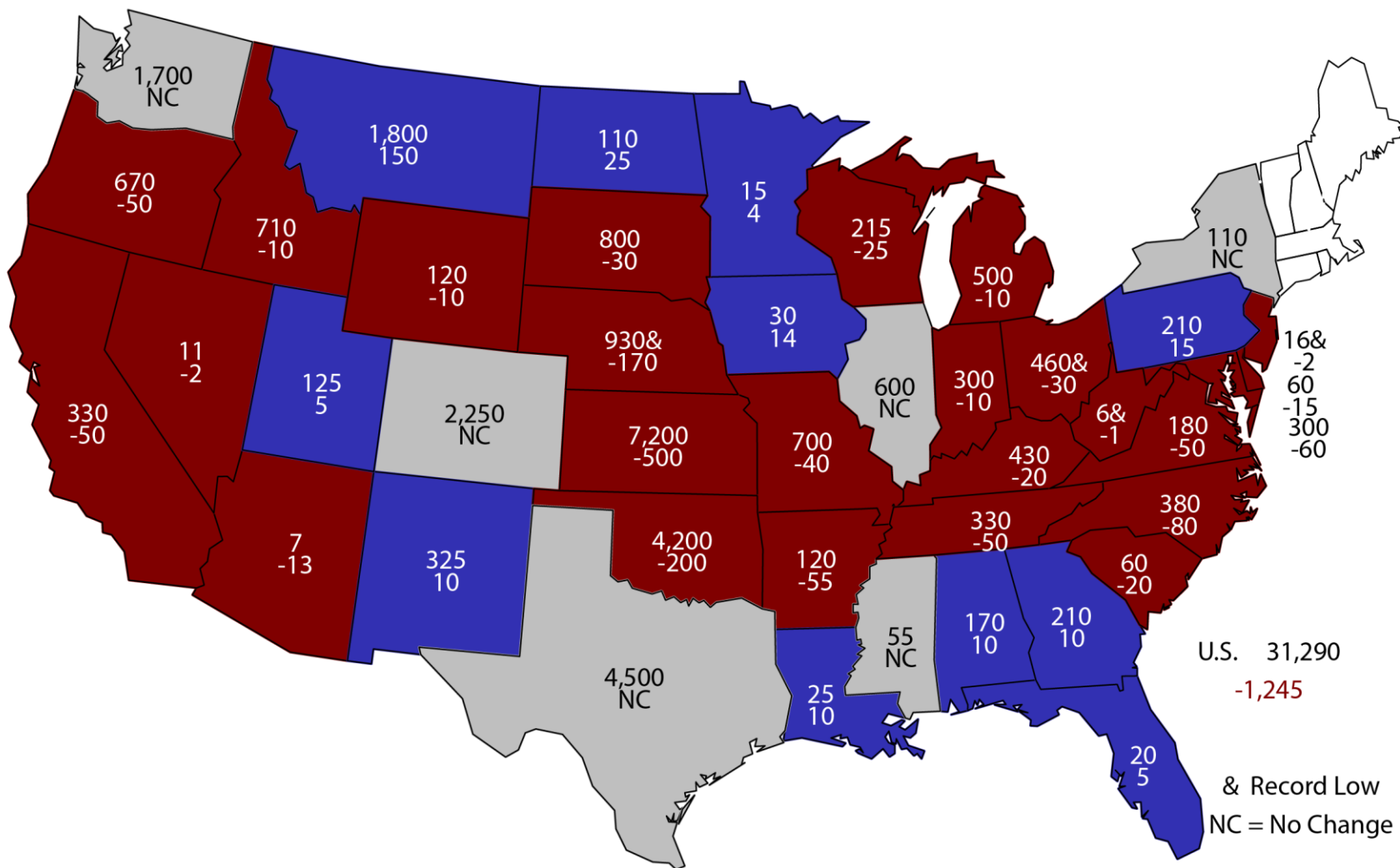
United States

Million Acres



2019 Winter Wheat Planted Area

(000) Acres and Change From Previous Year

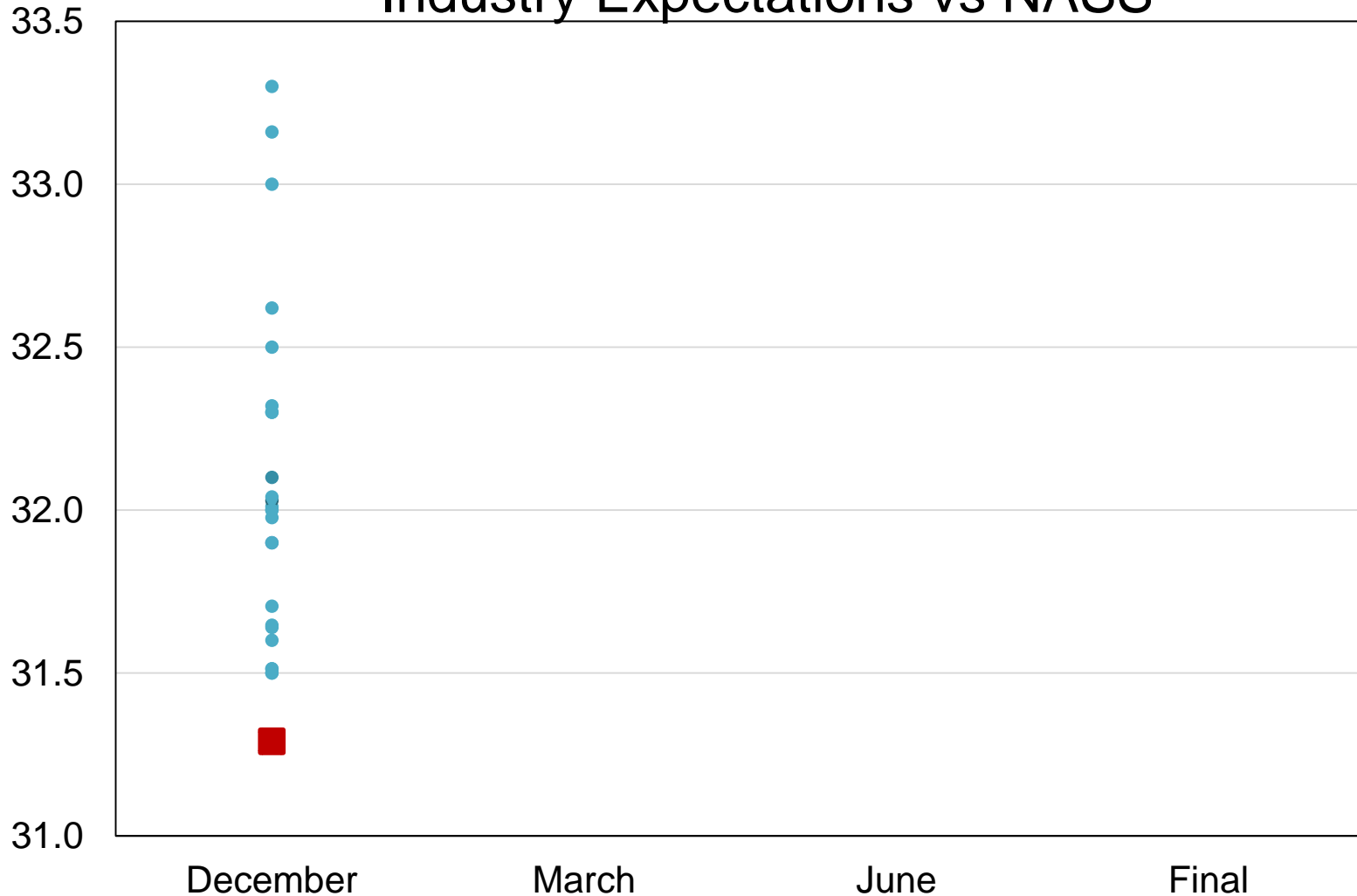


U.S. 31,290
-1,245

& Record Low
NC = No Change

2019 United States Winter Wheat Acres Industry Expectations vs NASS

Million Acres



■ NASS Estimate ● Individual Industry Expectation



February 2019 Crop Production

Crop	Unit	February 2019	% Change From Previous Forecasts		% Change From Previous Season
			Jan 1	Dec 1	
Production					
Oranges	Mil Tons	5.54	NC	+0.1	+41.3
Grapefruit	Thou Tons	668	-1.2	-1.2	+29.2
Tangerines & Mandarins	Thou Tons	968	NC	-0.9	+20.4
Lemons	Thou Tons	856	NA	NC	-3.6



Upcoming Reports

Release Date	Report Title
February 20	Agricultural Prices (January Report)
February 22	Cattle on Feed (January Report) CAIR: Cotton System CAIR: Fats and Oils CAIR: Grain Crushings
February 28	Agricultural Prices (February Report) Cattle Sheep and Goats



United States Department of Agriculture



USDA's
95th Annual

Agricultural Outlook Forum

Growing Locally, Selling Globally



February 21-22, 2019

Crystal Gateway Marriott Hotel, Arlington, Virginia

www.usda.gov/oce/forum

Follow us on Social Media (#AgOutlook)

 @USDA |  @usdagov |  @USDA

USDA-NASS
2-8-19

STAT CHAT SERIES



**FRI,
FEB 8
1PM ET**

Join @usda_nass on Twitter using #StatChat on Friday, February 8 at 1pm ET.



Lance Honig of @usda_nass will answer your questions about the final 2018 crop production data, stocks estimates, winter wheat seedings, future rescheduled reports, and the upcoming 2017 Census of Agriculture data release schedule.



You can also tweet any questions you may have in advance to @usda_nass.



United States Department of Agriculture
National Agricultural Statistics Service

All Reports Available At
www.nass.usda.gov

For Questions
202-720-2127
800-727-9540
nass@nass.usda.gov