



United States Department of Agriculture
National Agricultural Statistics Service

Prospective Plantings
Grain Stocks
Rice Stocks

Executive Summary

Lance Honig, Chief
Crops Branch



Program Review

- Completed following each Census of Agriculture
Ensure that the NASS annual estimating program targets commodities and states most relevant based on the latest available information
- Changes were announced March 12 and posted to website
https://www.nass.usda.gov/Surveys/Program_Review/index.php



Contents

Field Crops	Stocks
Principal Crops Planted Acres	Corn
Feed Grain Acres	Soybeans
Food Grain Acres	Sorghum
Oilseed Acres	Sunflower
Other Crop Acres	All Wheat
	Barley
	Oats
	Rice

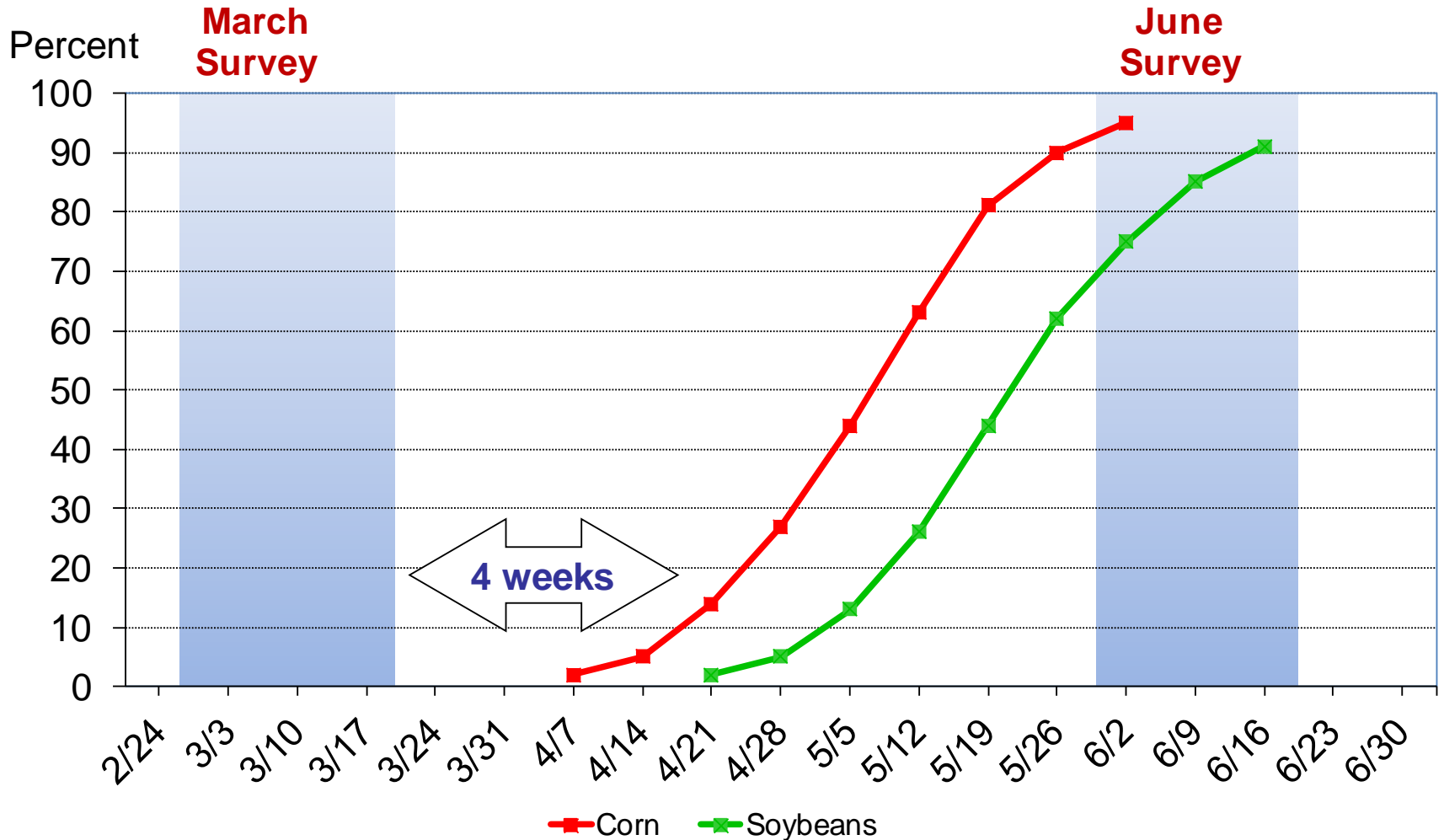


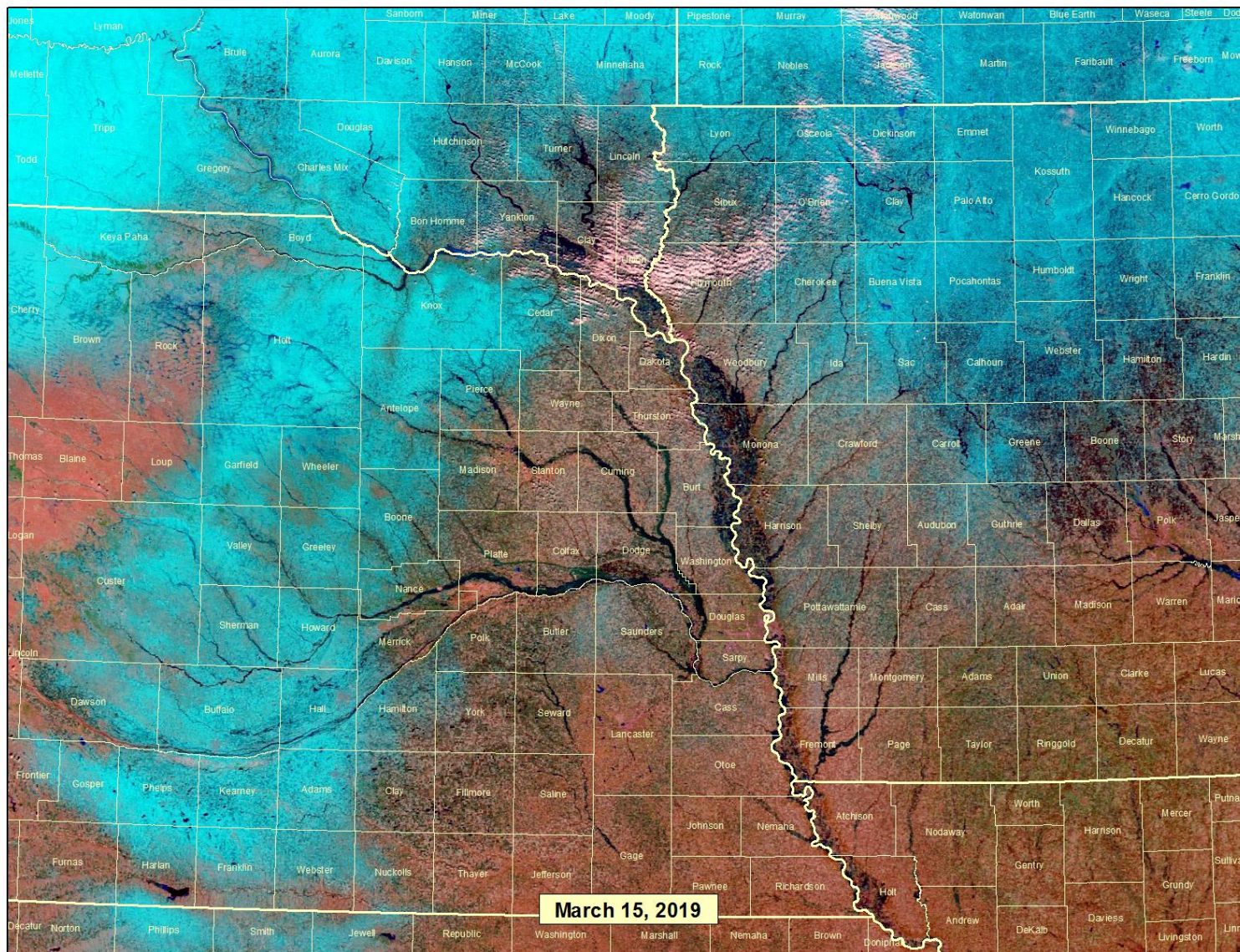
Survey Overview

	March Ag Survey	Off-Farm Grain Stock Survey
Survey Type	Farmer Reported	Reported
Collection Method	Mail, Phone, Internet, Personal Interview	Mail, Phone, Internet, Personal Interview
Crops Included	Acreage Intentions, On-Farm Stocks	Grains and Oilseed On Hand
States	All Except AK & HI	All Except AK, HI, & NV
Sample Size	82,352	~ 8,500 Facilities
Collection Period	Feb 27 – Mar 19	Feb 28 – Mar 18

Acreage Intentions vs. Actual Planted Acres

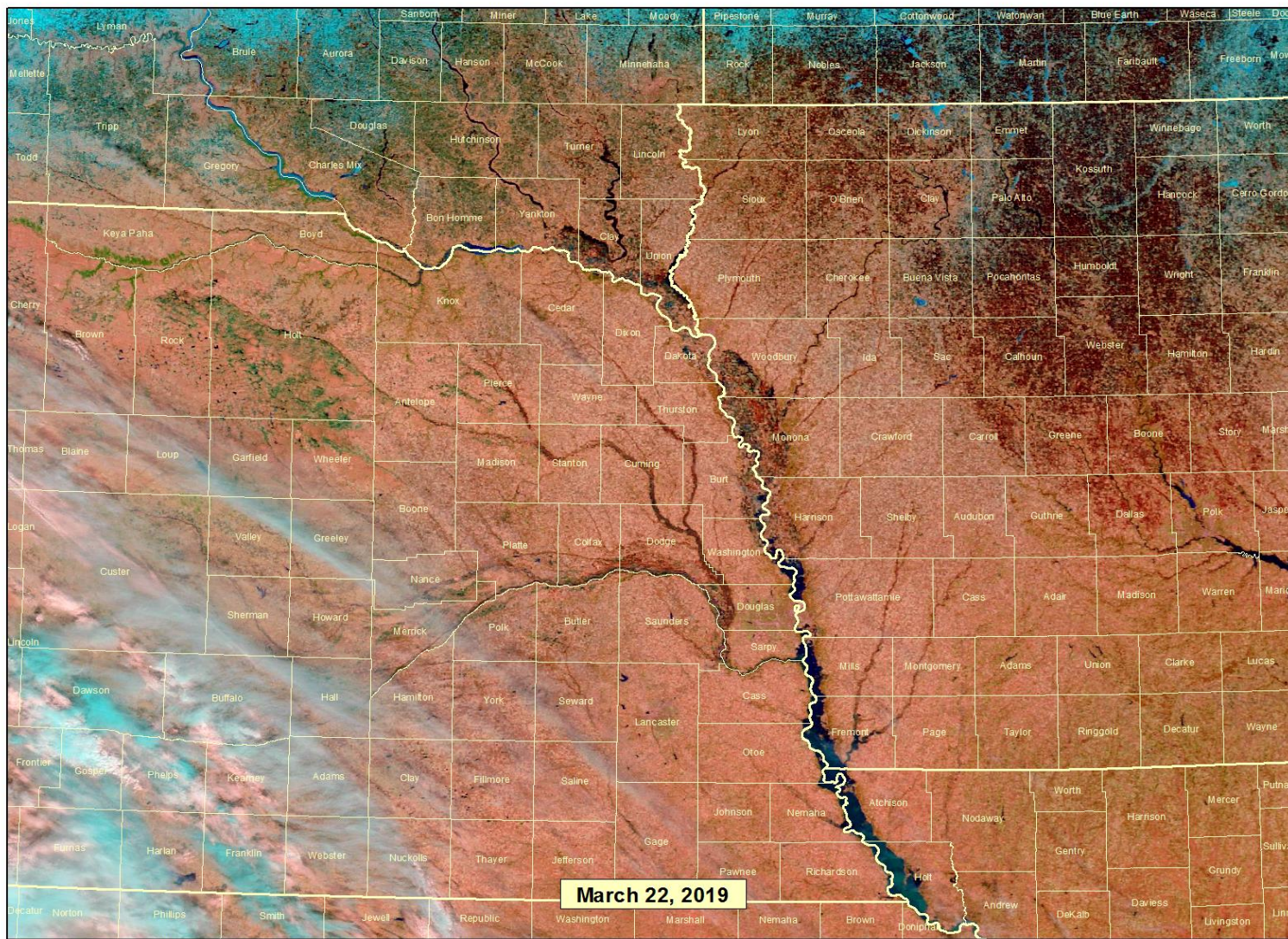
Usual Planting Progress





False true color imagery from MODIS sensor distributed courtesy of NASA Worldview Snapshots <https://www.earthdata.nasa.gov/>

filename: CentralMissouriRiver_MODIS_190315 created: 3/27/2019 by USDA/NASS/RDD



False true color imagery from MODIS sensor distributed courtesy of NASA Worldview Snapshots <https://wvs.earthdata.nasa.gov/>

filename: CentralMissouriRiver_MODIS_190322 created: 3/27/2019 by USDA/NASS/RDD



Principal Crops Planted Acreage

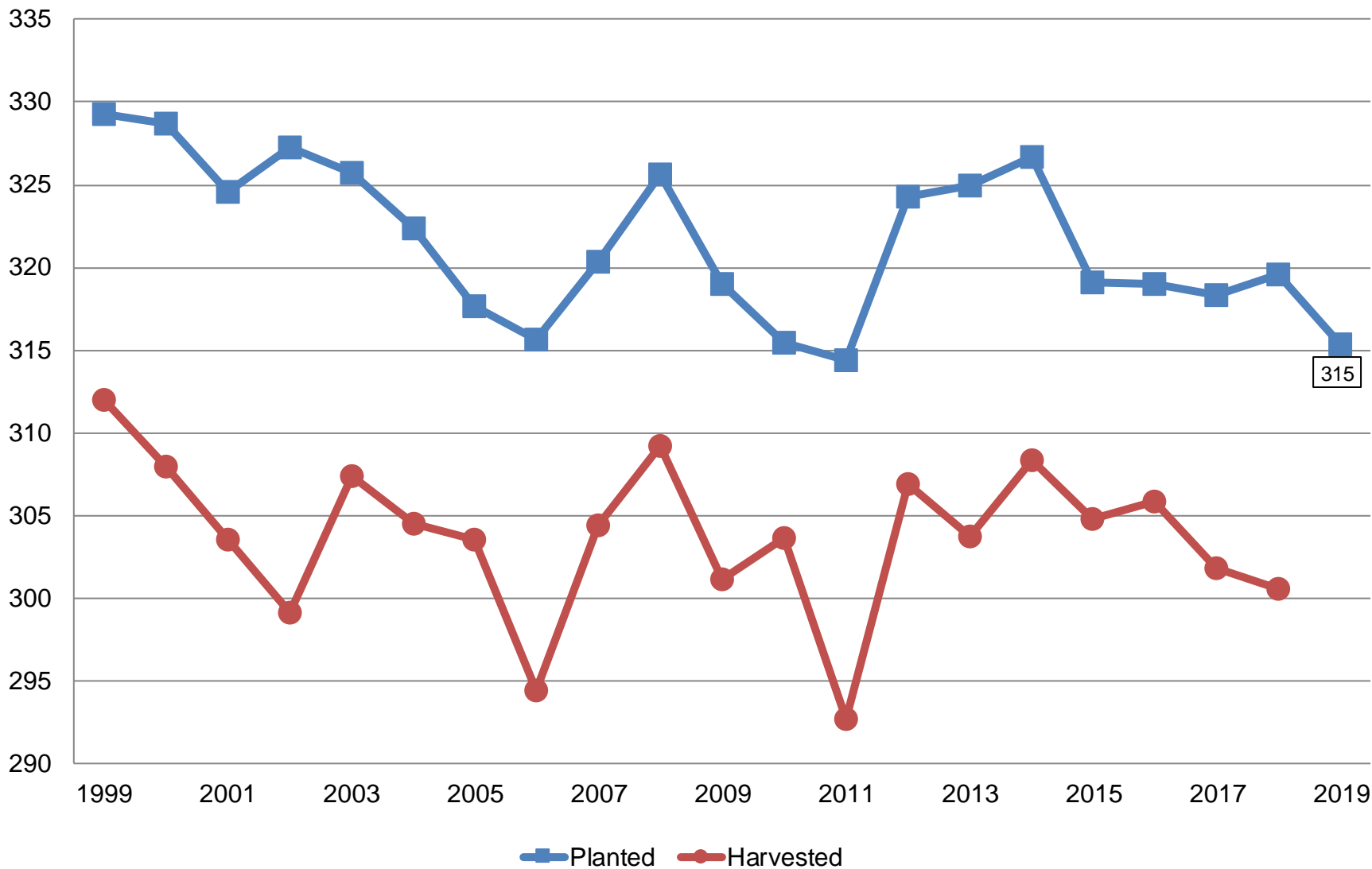
United States

Year	Principal Crops	Change From Previous Year
	<i>Million Acres</i>	
2010	315.4	-3.6
2011	314.3	-1.1
2012	324.3	+10.0
2013	324.9	+0.6
2014	326.7	+1.7
2015	319.1	-7.6
2016	319.0	-0.1
2017	318.3	-0.6
2018	319.6	+1.2
2019	315.4	-4.2



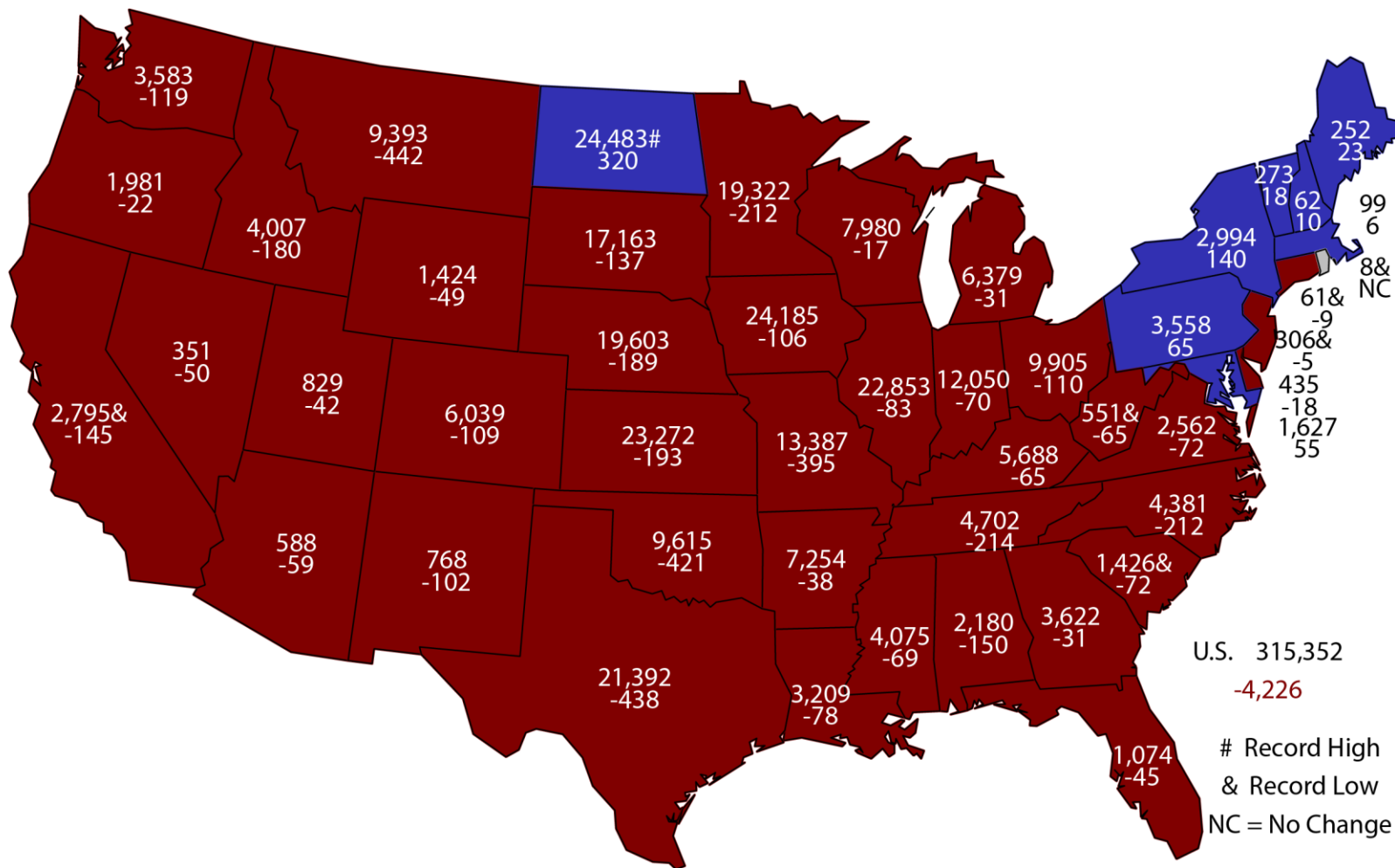
Principal Crops United States

Million Acres



2019 Principal Crops Planted Area

(000) Acres and Change From Previous Year



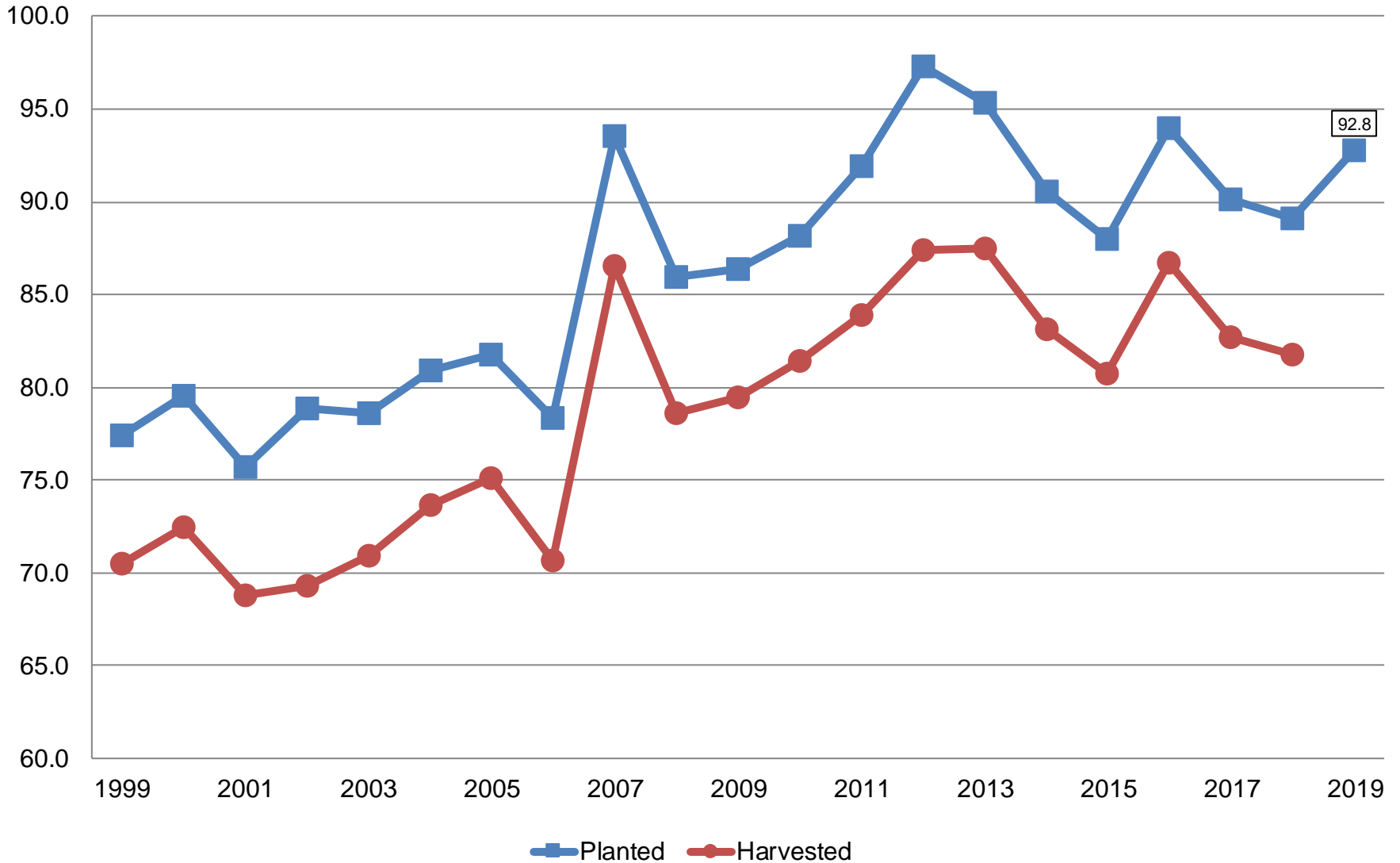
U.S. 315,352
-4,226

Record High
& Record Low
NC = No Change



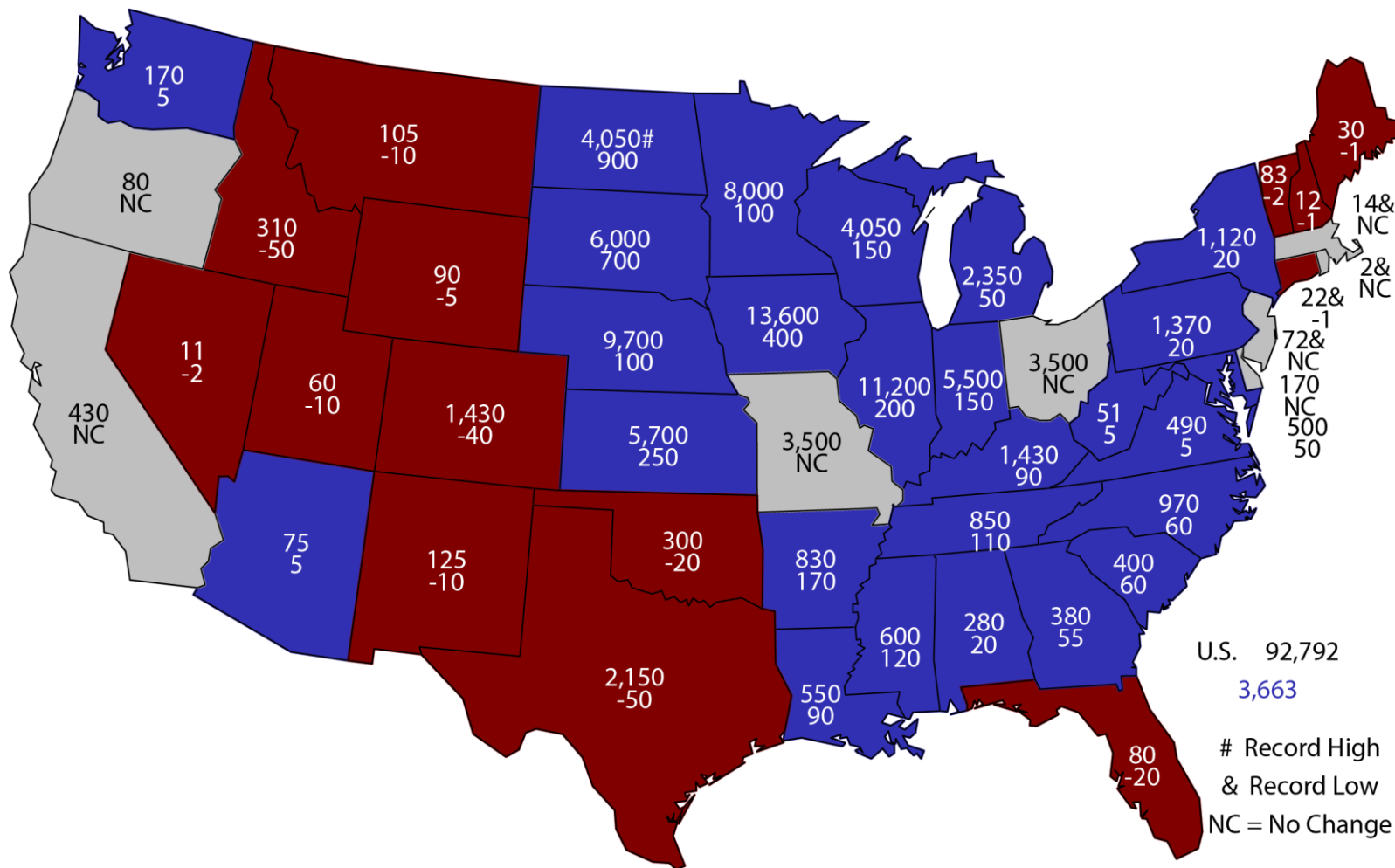
Corn Acres United States

Million Acres



2019 Corn Planted Area

(000) Acres and Change From Previous Year

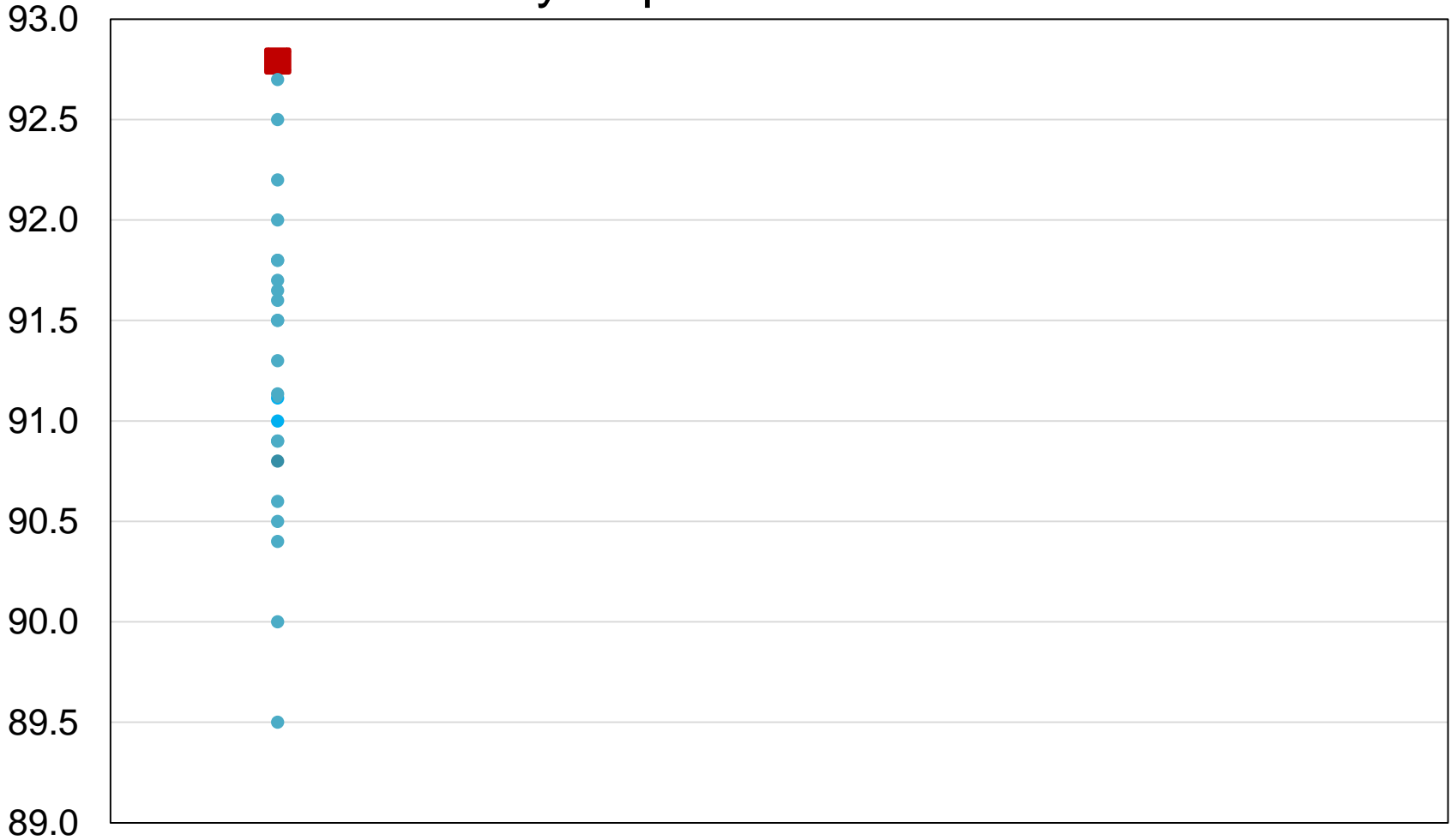




U.S. 92,792
 3,663
 # Record High
 & Record Low
 NC = No Change



2019 United States Corn Acres Industry Expectations vs NASS

Million Acres

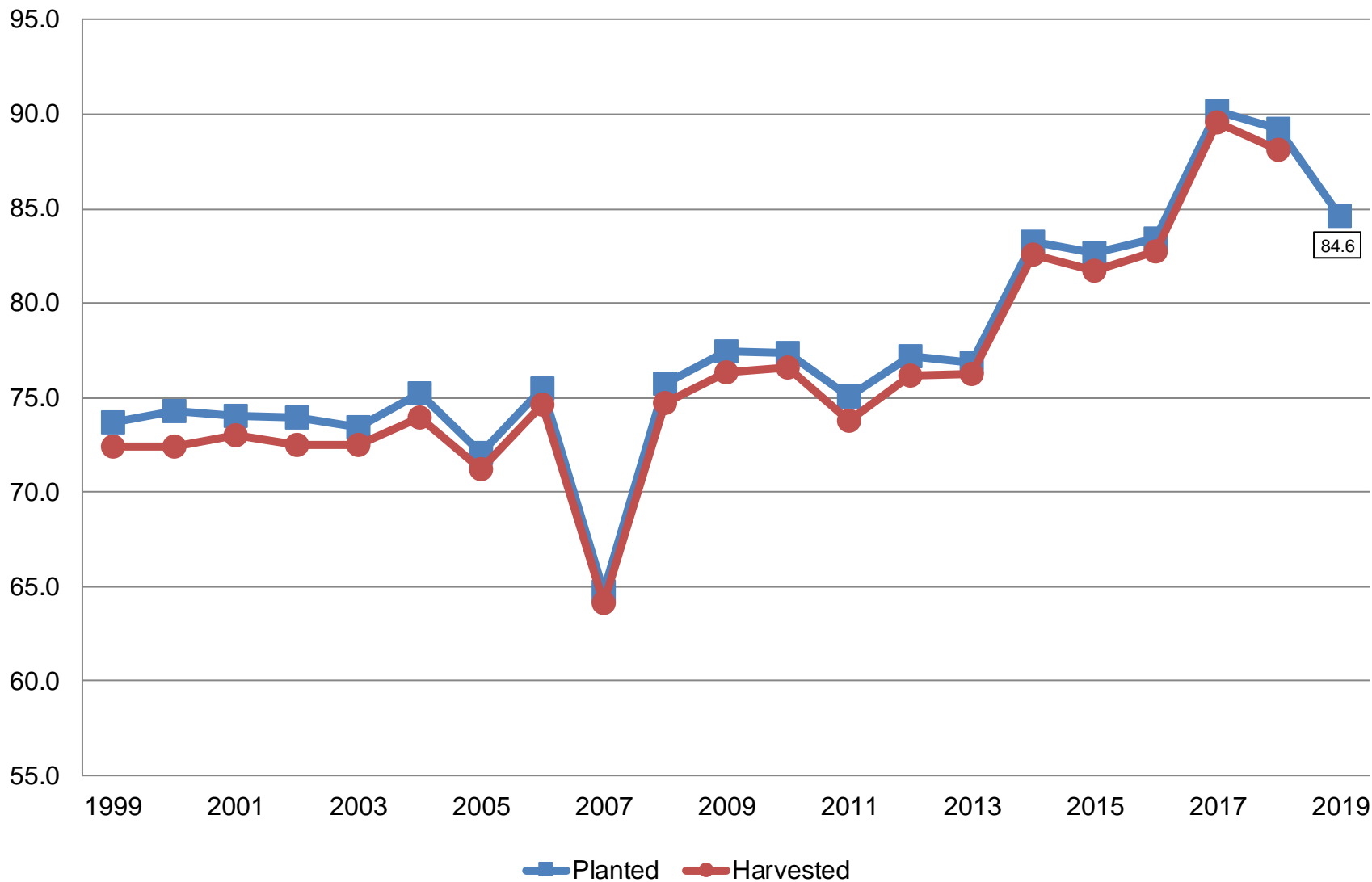


 NASS Estimate  Individual Industry Expectation



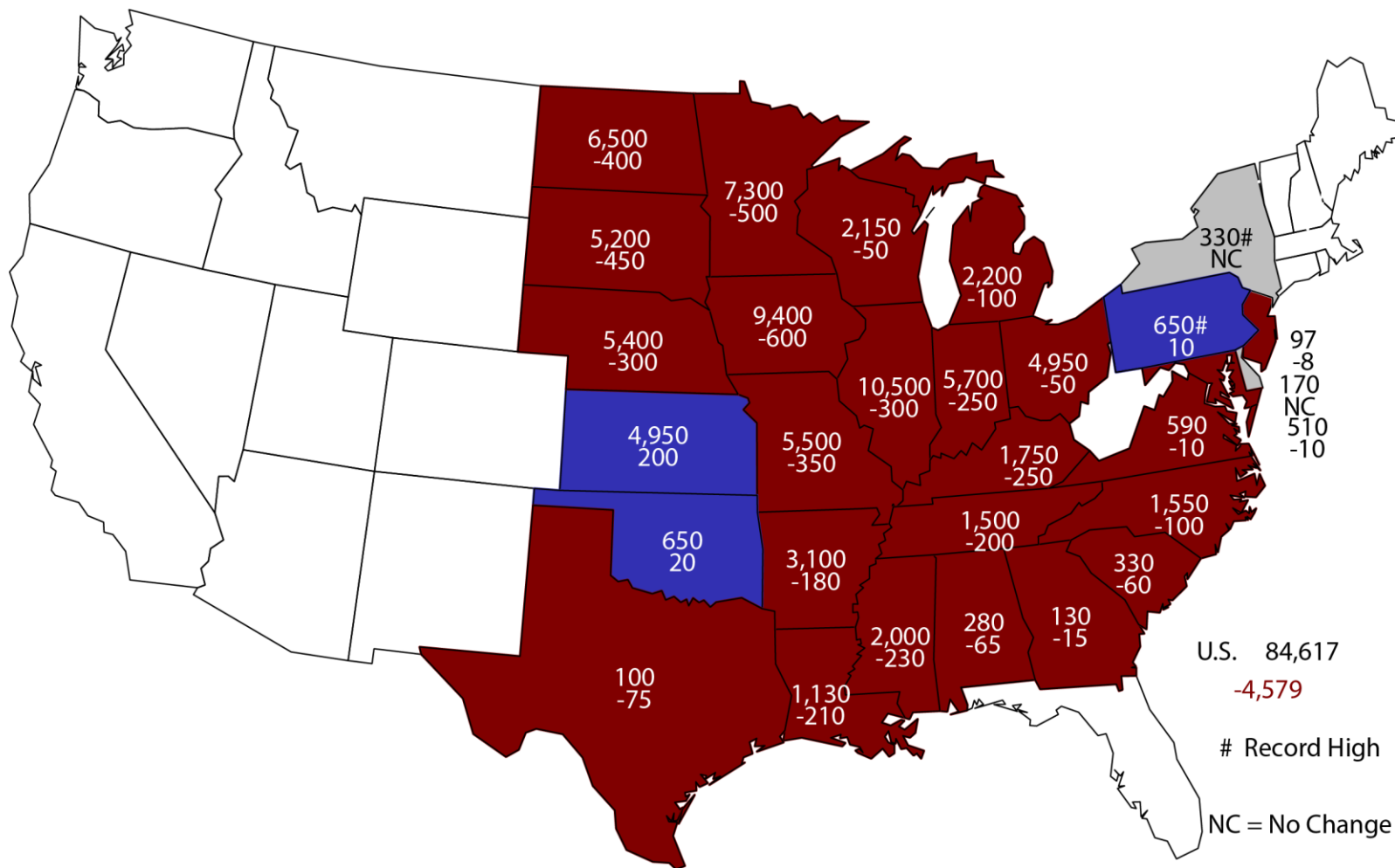
Soybean Acres United States

Million Acres



2019 Soybean Planted Area

(000) Acres and Change From Previous Year



97
-8
170
NC
510
-10

U.S. 84,617
-4,579

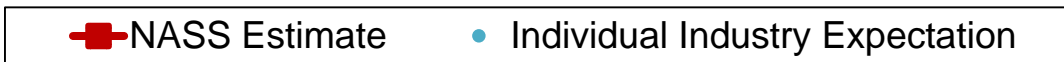
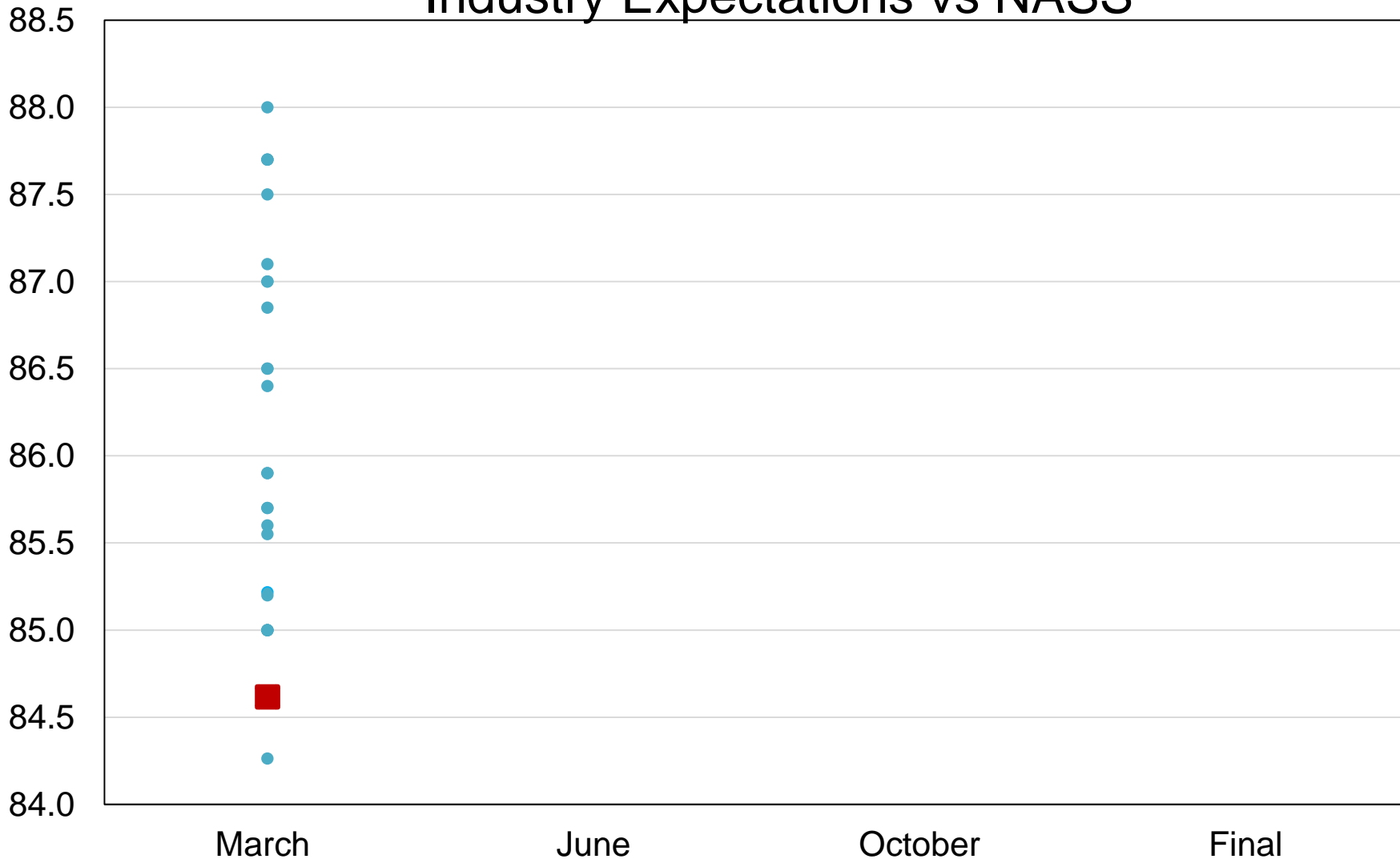
Record High

NC = No Change



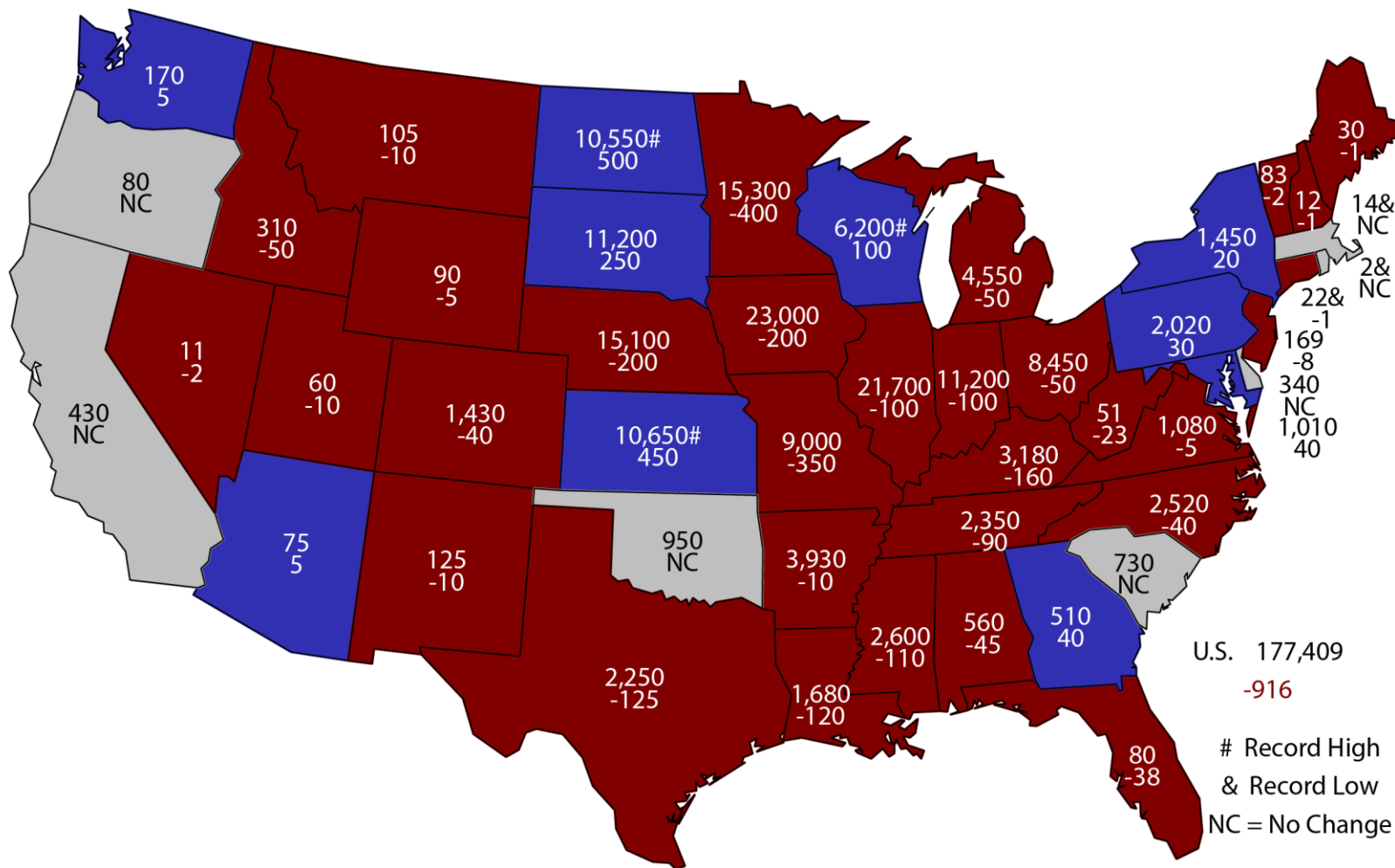
2019 United States Soybean Acres Industry Expectations vs NASS

Million Acres



2019 Combined Corn & Soybean Planted Area

(000) Acres and Change From Previous Year

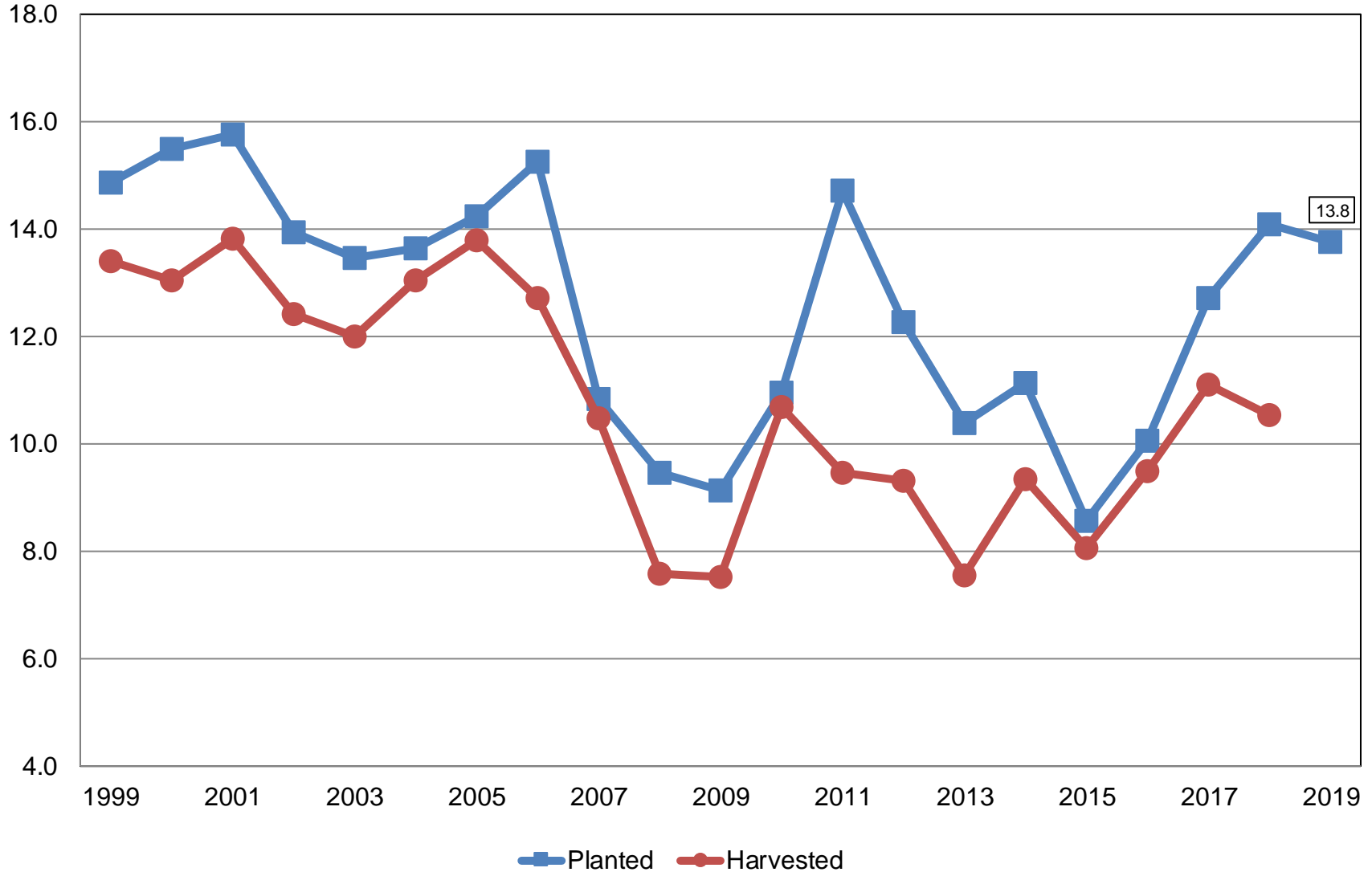


Record High
& Record Low
NC = No Change



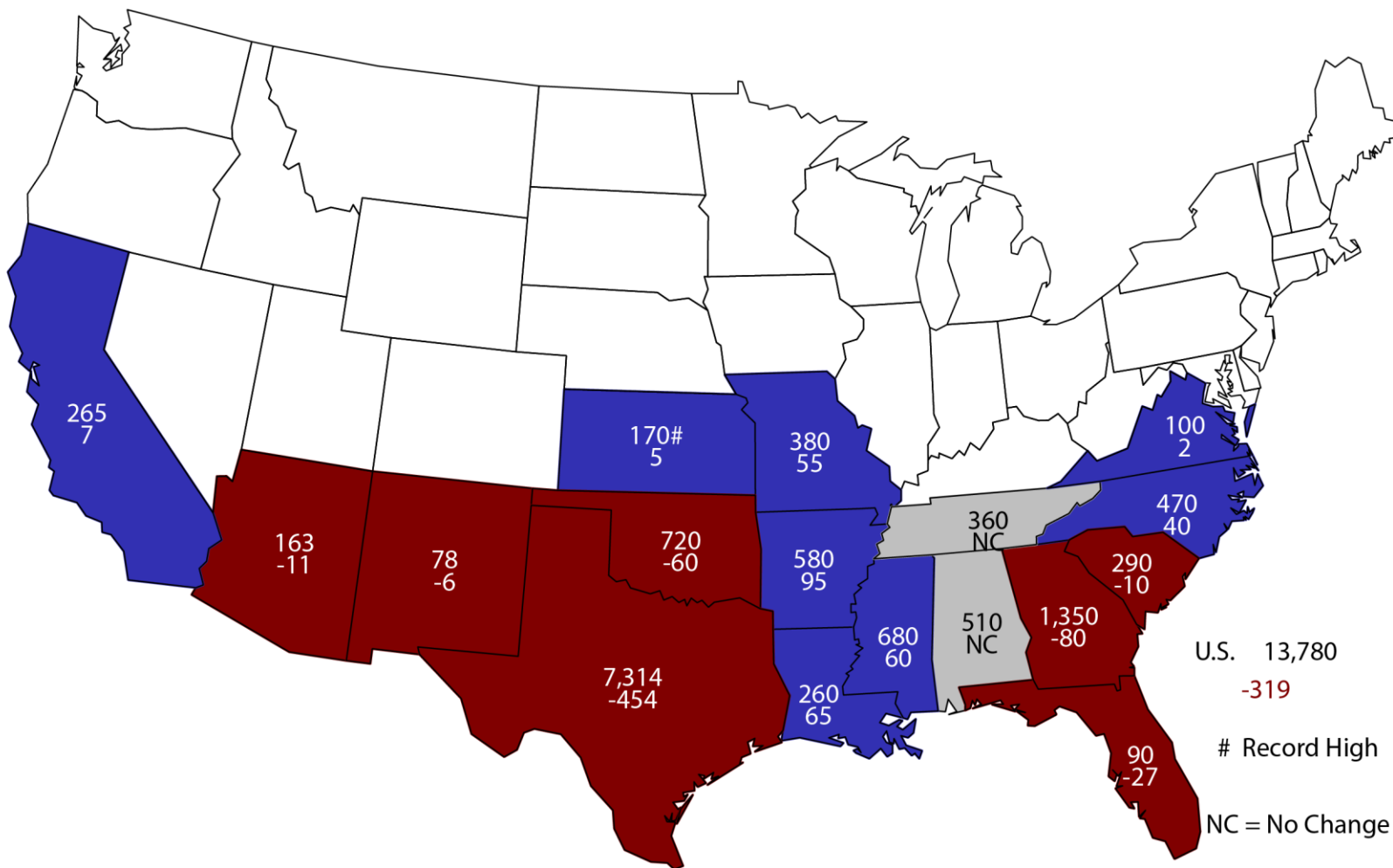
All Cotton Acres United States

Million Acres



2019 All Cotton Planted Area

Acres (000) and Change From Previous Year

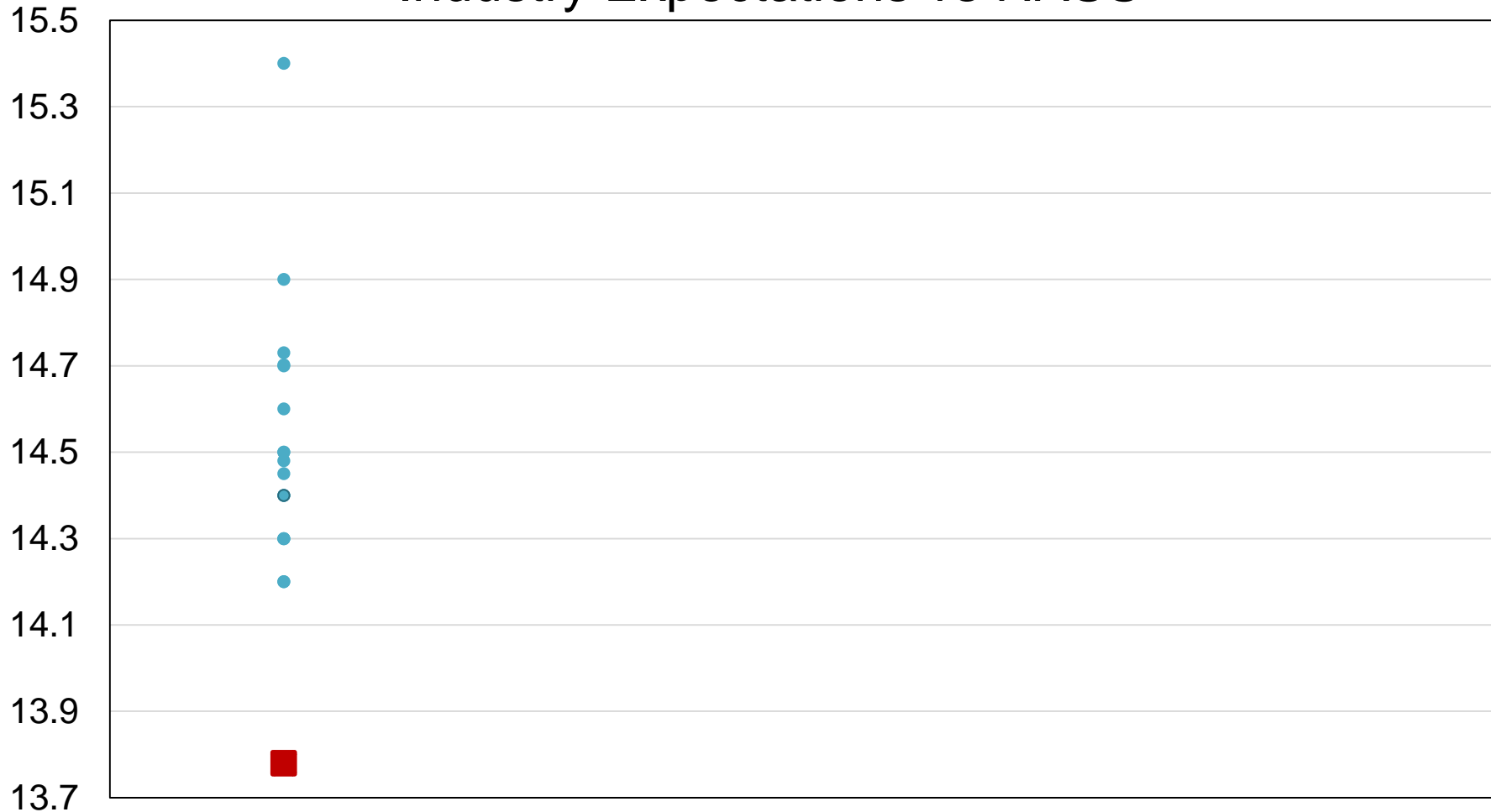


U.S. 13,780
 -319
 # Record High
 NC = No Change



2019 United States Cotton Acres Industry Expectations vs NASS

Million Acres

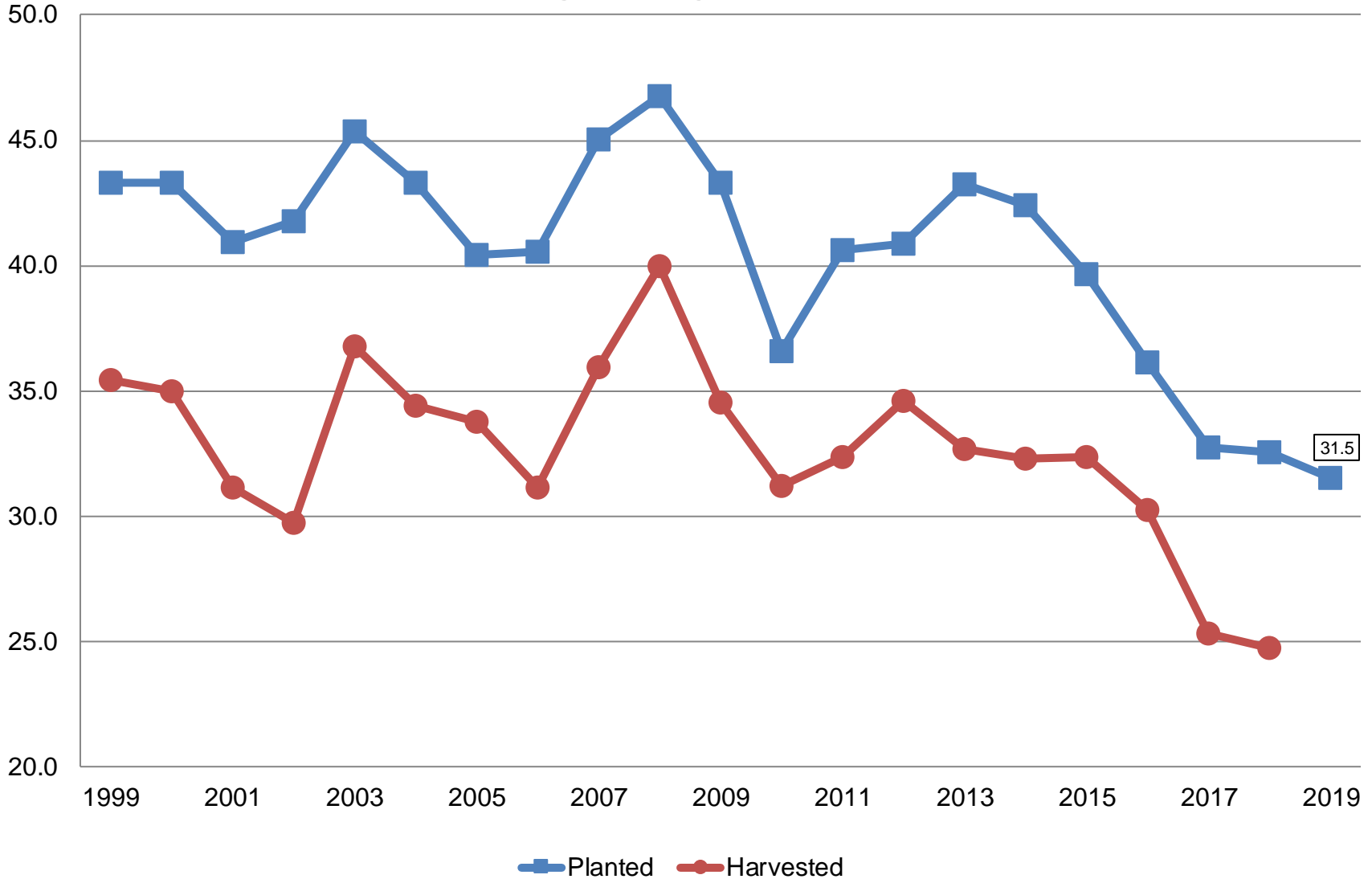


 NASS Estimate  Individual Industry Expectation



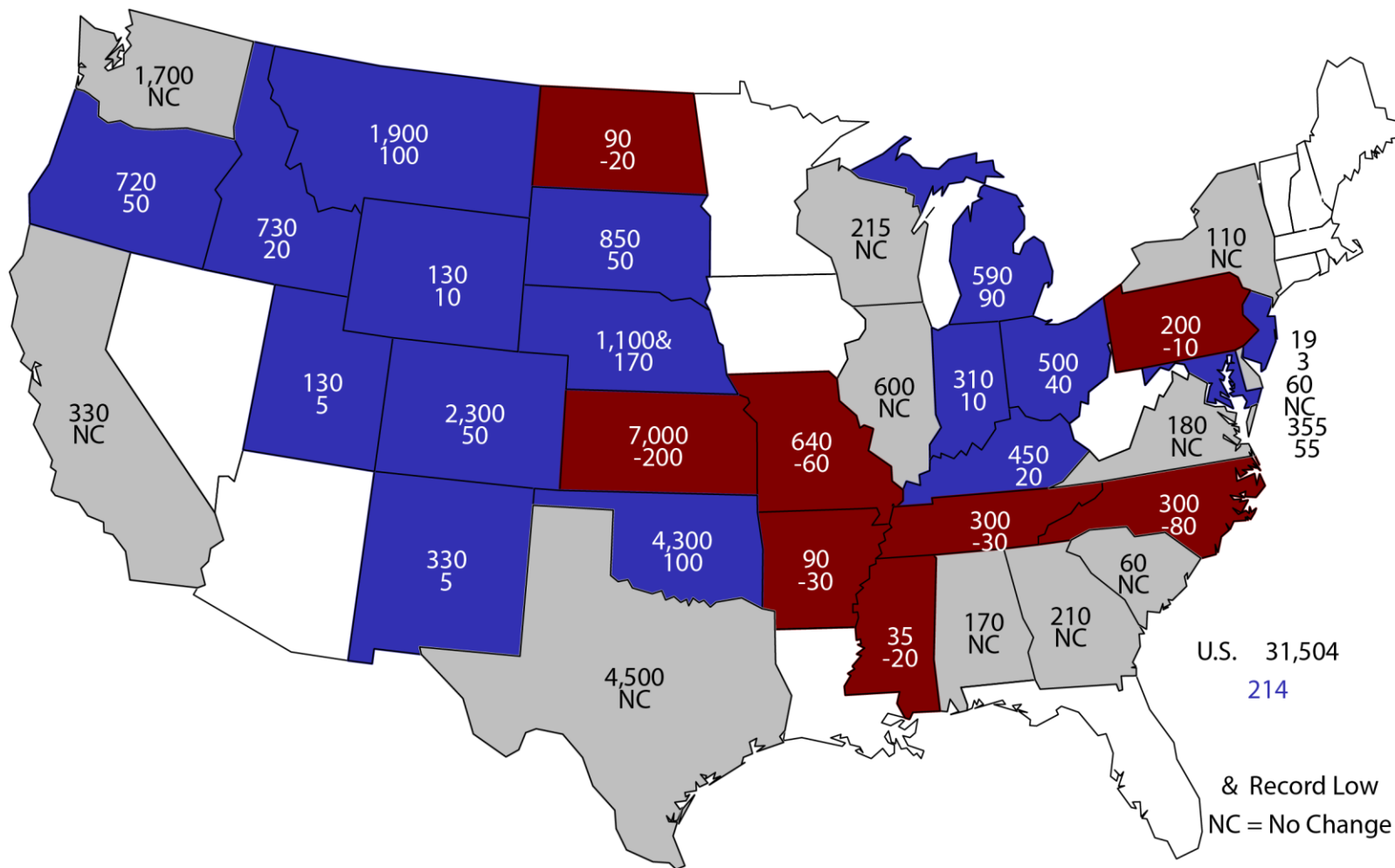
Winter Wheat Acres United States

Million Acres



2019 Winter Wheat Planted Area

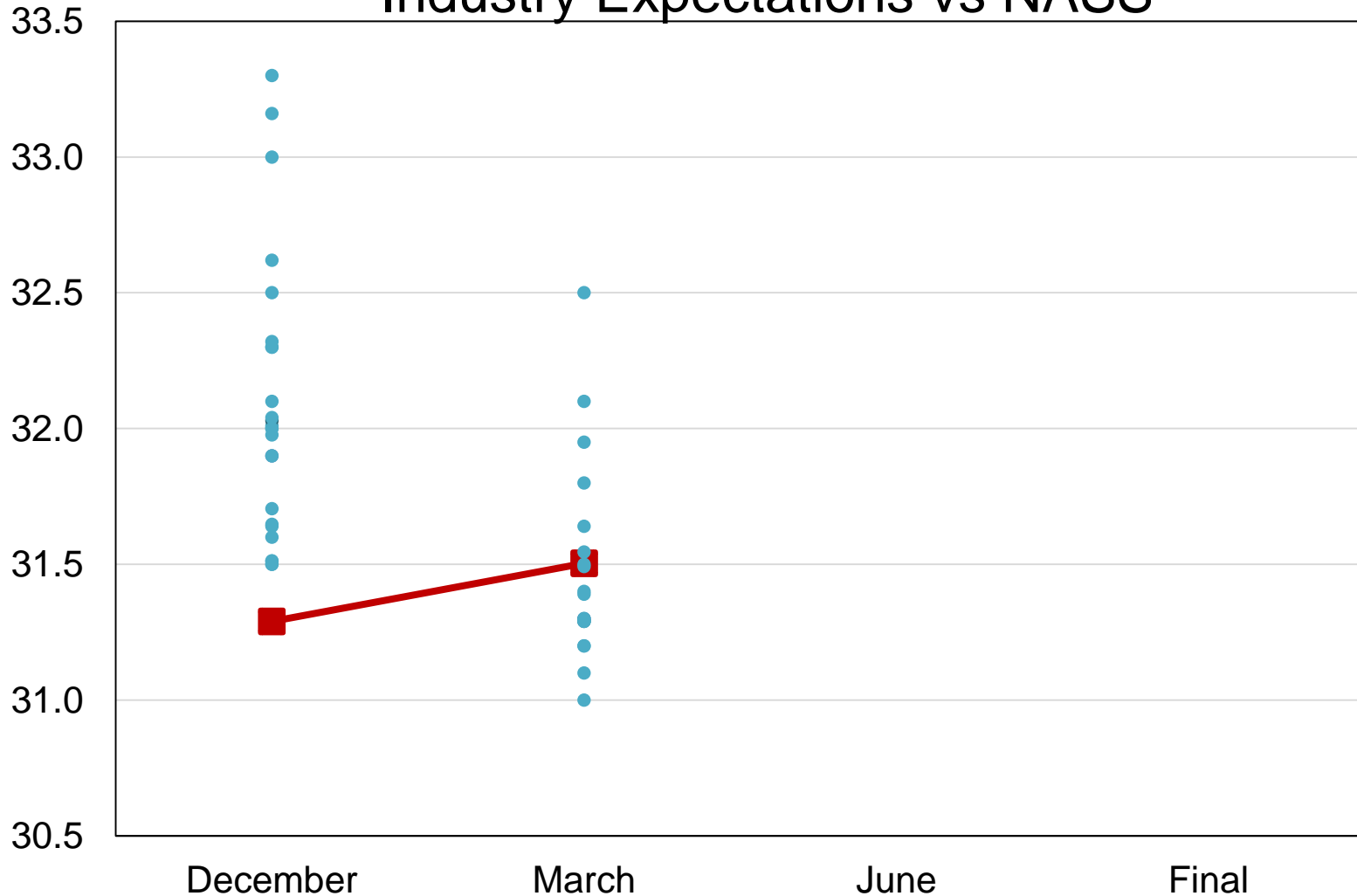
(000) Acres and Change From Previous Estimate



& Record Low
NC = No Change

2019 United States Winter Wheat Acres Industry Expectations vs NASS

Million Acres

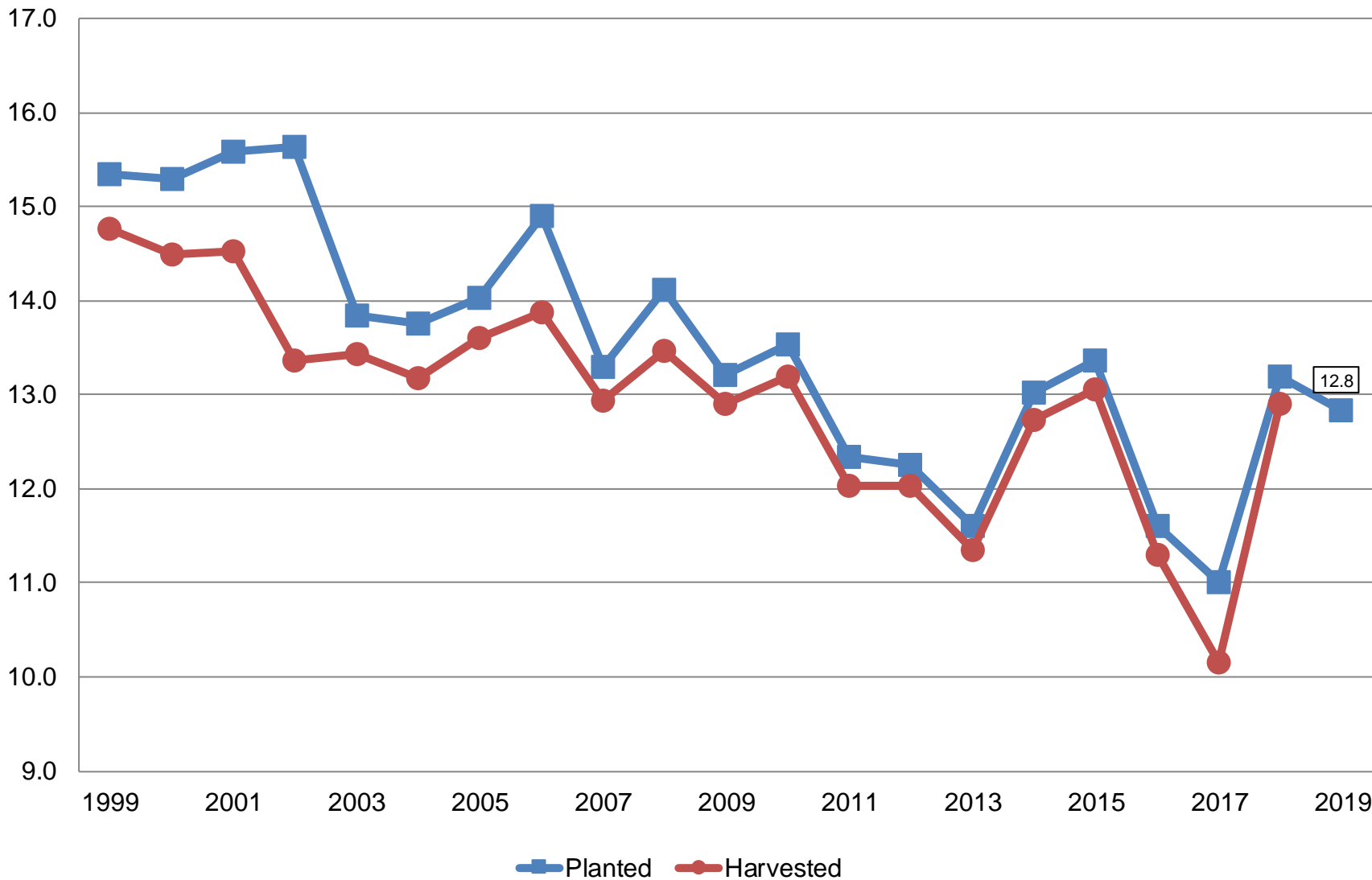


■ NASS Estimate ● Individual Industry Expectation

Other Spring Wheat Acres

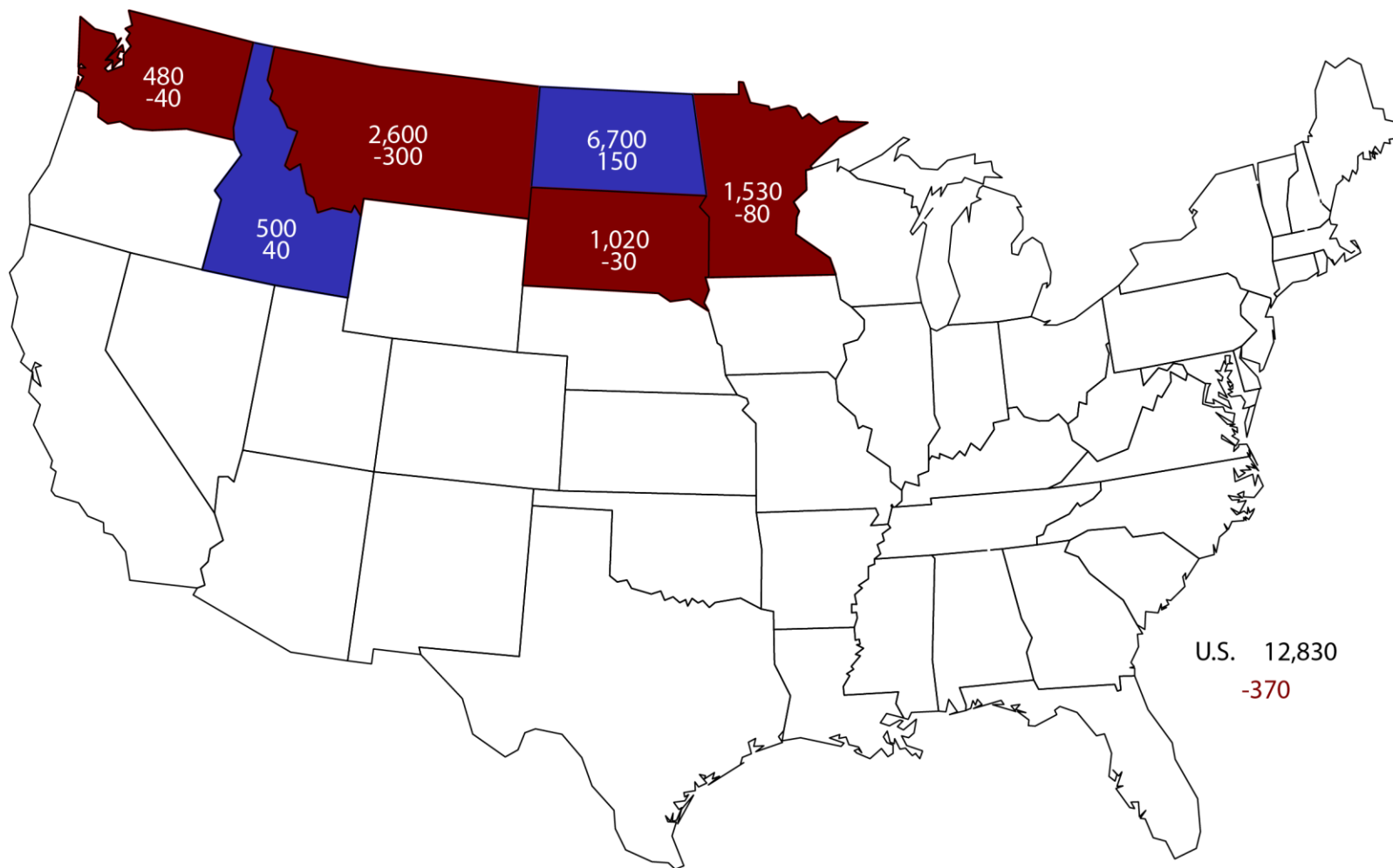
United States

Million Acres



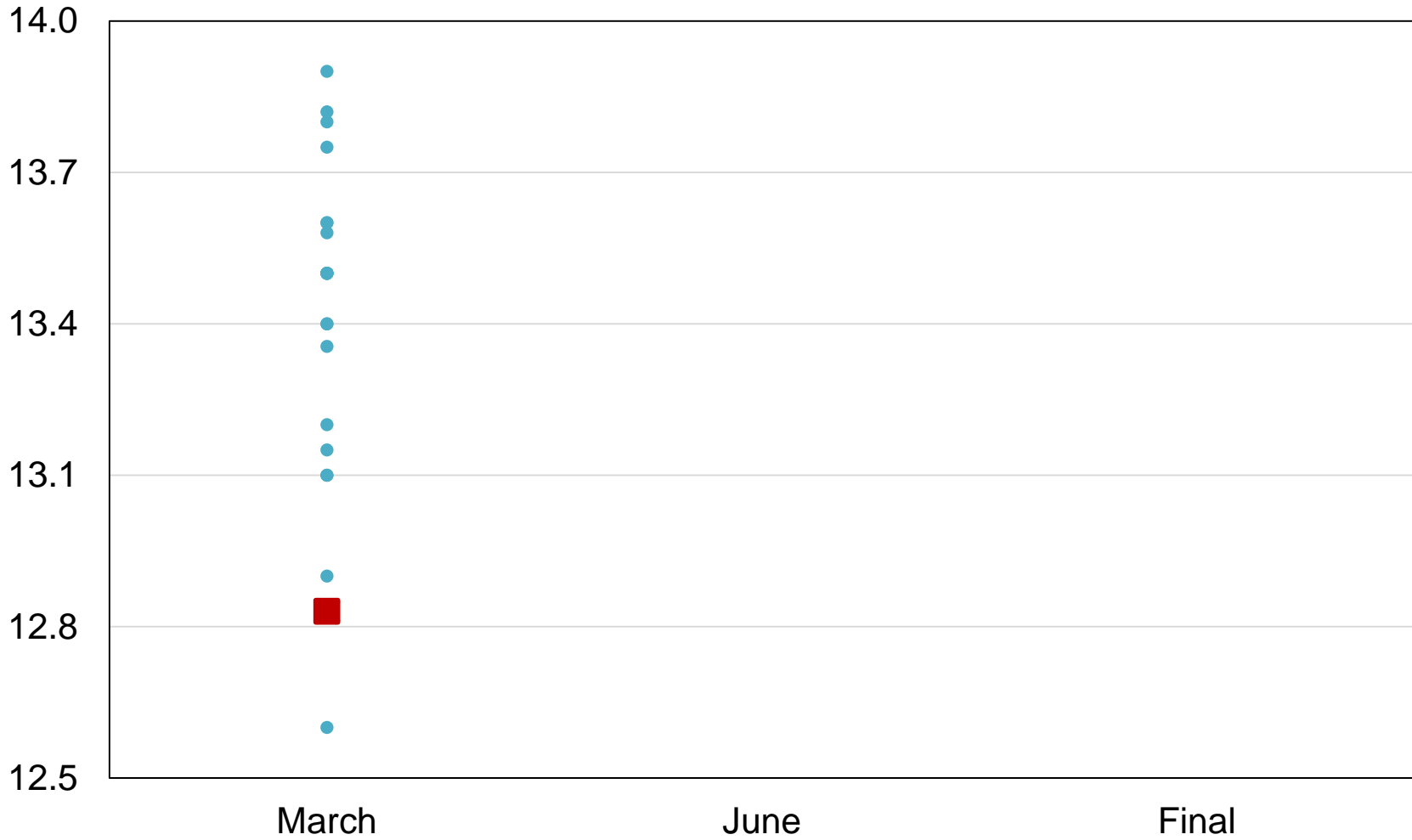
2019 Other Spring Wheat Planted Area

(000) Acres and Change From Previous Year



2019 United States Other Spring Wheat Acres Industry Expectations vs NASS

Million Acres



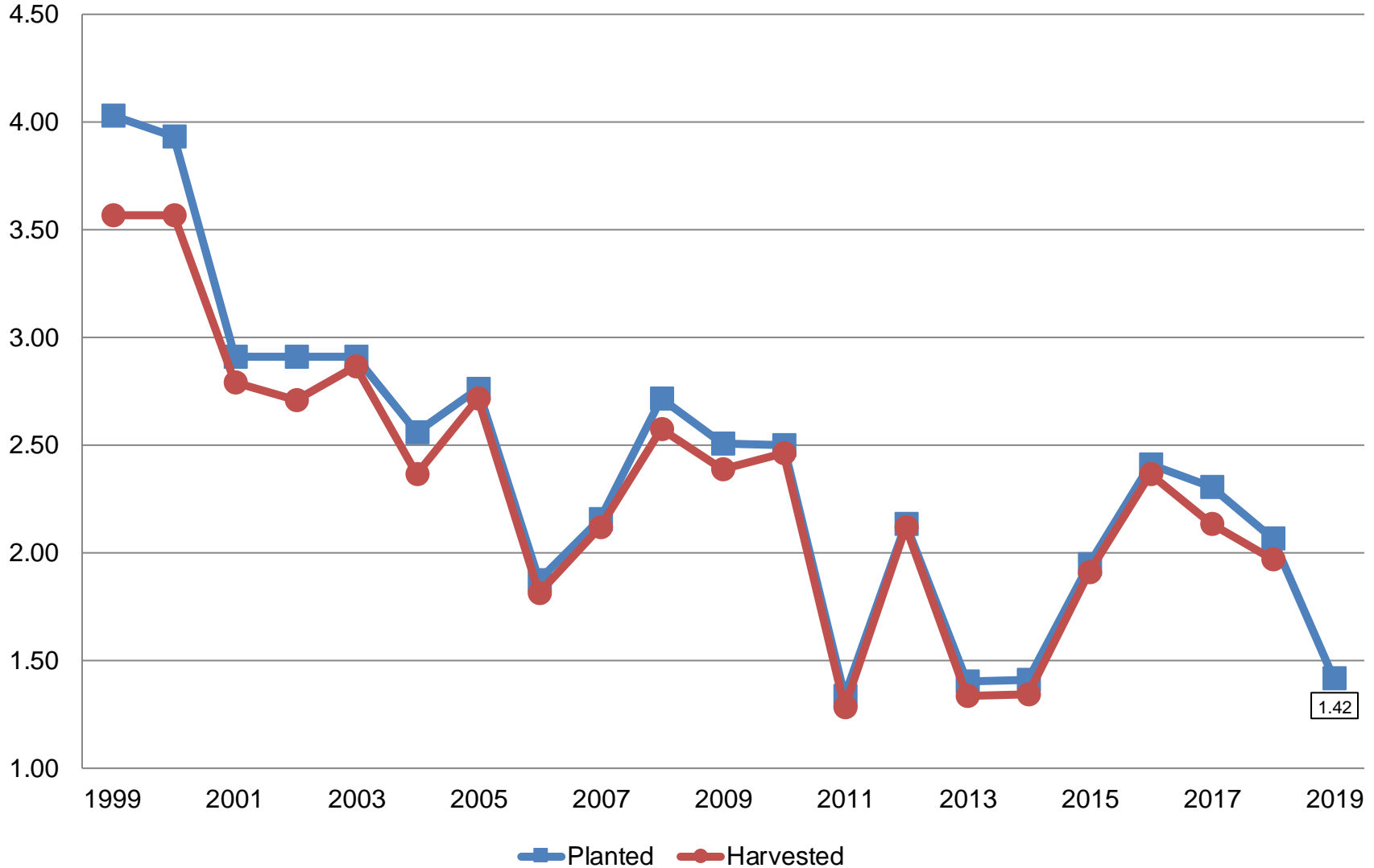
■ NASS Estimate
 ● Individual Industry Expectation



Durum Wheat Acres

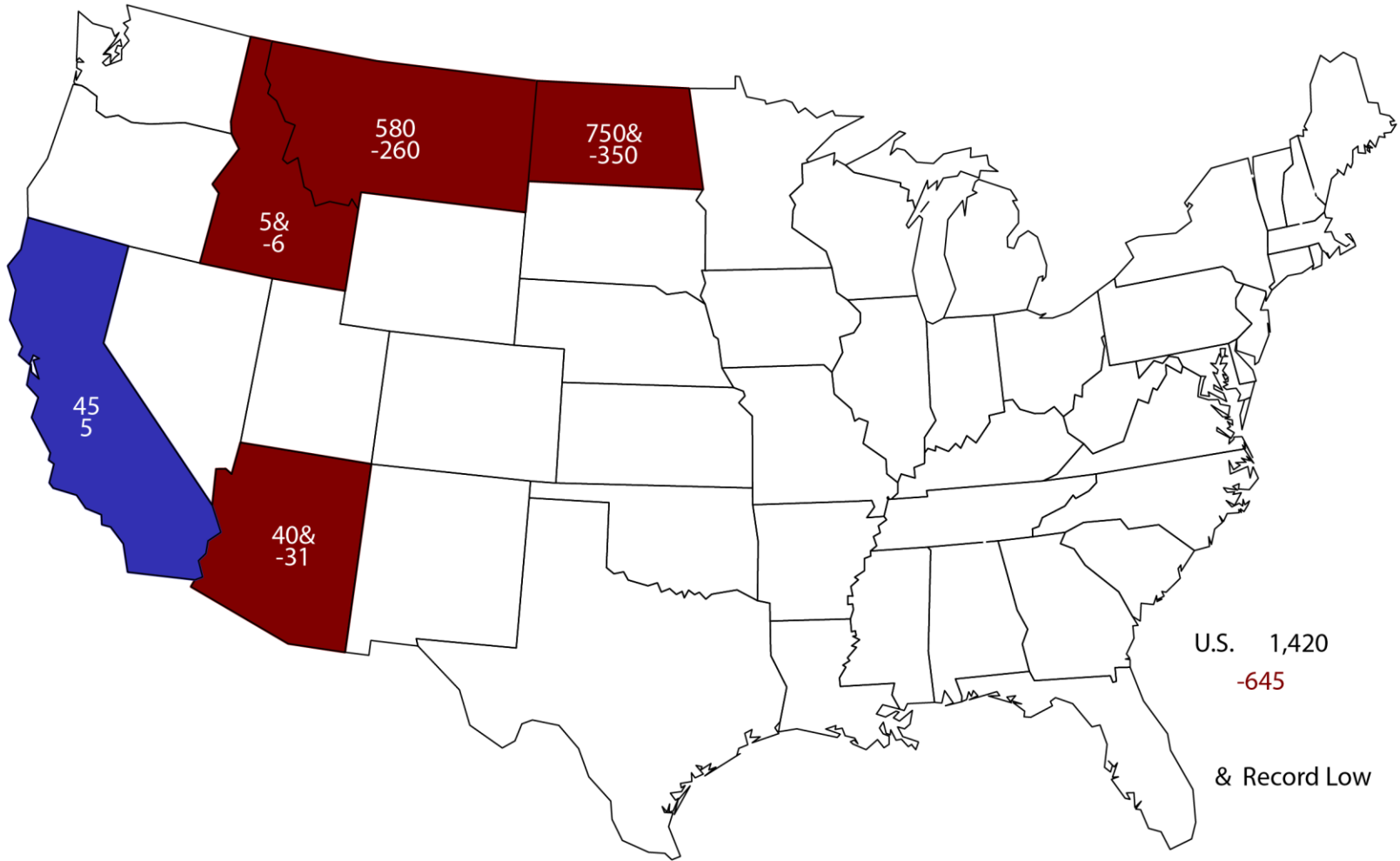
United States

Million Acres



2019 Durum Wheat Planted Area

(000) Acres and Change From Previous Year



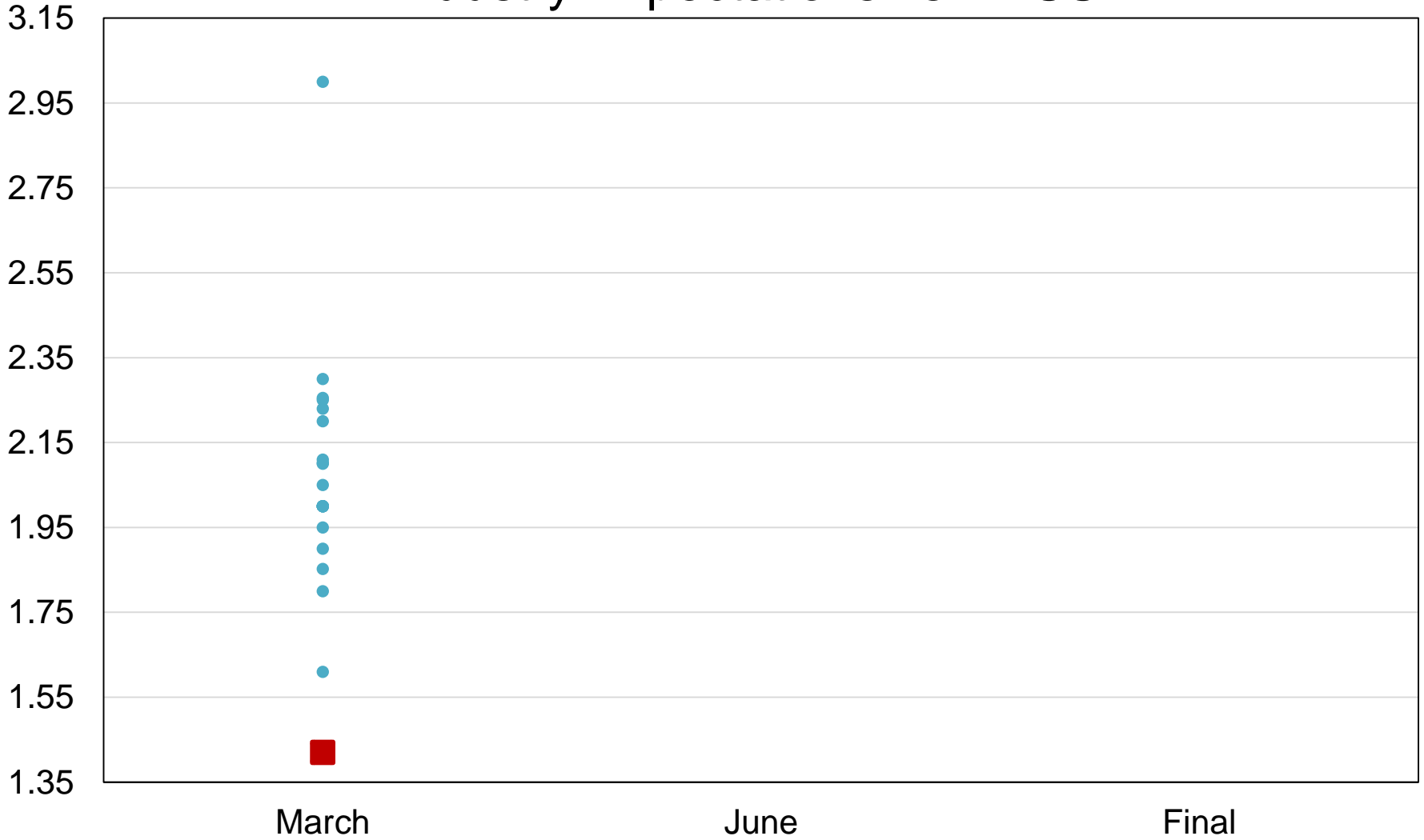
U.S. 1,420
-645

& Record Low



2019 United States Durum Wheat Acres Industry Expectations vs NASS

Million Acres



■ NASS Estimate ● Individual Industry Expectation



March 2019 Prospective Plantings

Crop	Unit	March 2019	% Change From Previous Estimate	% Change From Previous Season
Feed Grains				
Corn	Mil Ac	92.8	NA	+4.1
Sorghum	Mil Ac	5.14	NA	-9.8
Oats	Mil Ac	2.56	NA	-7.0
Barley	Mil Ac	2.55	NA	+0.3



March 2019 Prospective Plantings

Crop	Unit	March 2019	% Change From Previous Estimate	% Change From Previous Season
Food Grains				
Wheat, All	Mil Ac	45.8	NA	-4.3
Wheat, Winter	Mil Ac	31.5	+0.7	-3.2
Wheat, Spring	Mil Ac	12.8	NA	-2.8
Wheat, Durum	Mil Ac	1.42	NA	-31.2
Rice	Mil Ac	2.87	NA	-2.6



March 2019 Prospective Plantings

Crop	Unit	March 2019	% Change From Previous Estimate	% Change From Previous Season
Oilseeds				
Soybeans	Mil Ac	84.6	NA	-5.1
Peanuts	Mil Ac	1.45	NA	+1.6
Sunflower	Mil Ac	1.35	NA	+3.7
Canola	Mil Ac	1.90	NA	-4.4
Flaxseed	Thou Ac	345	NA	+65.9

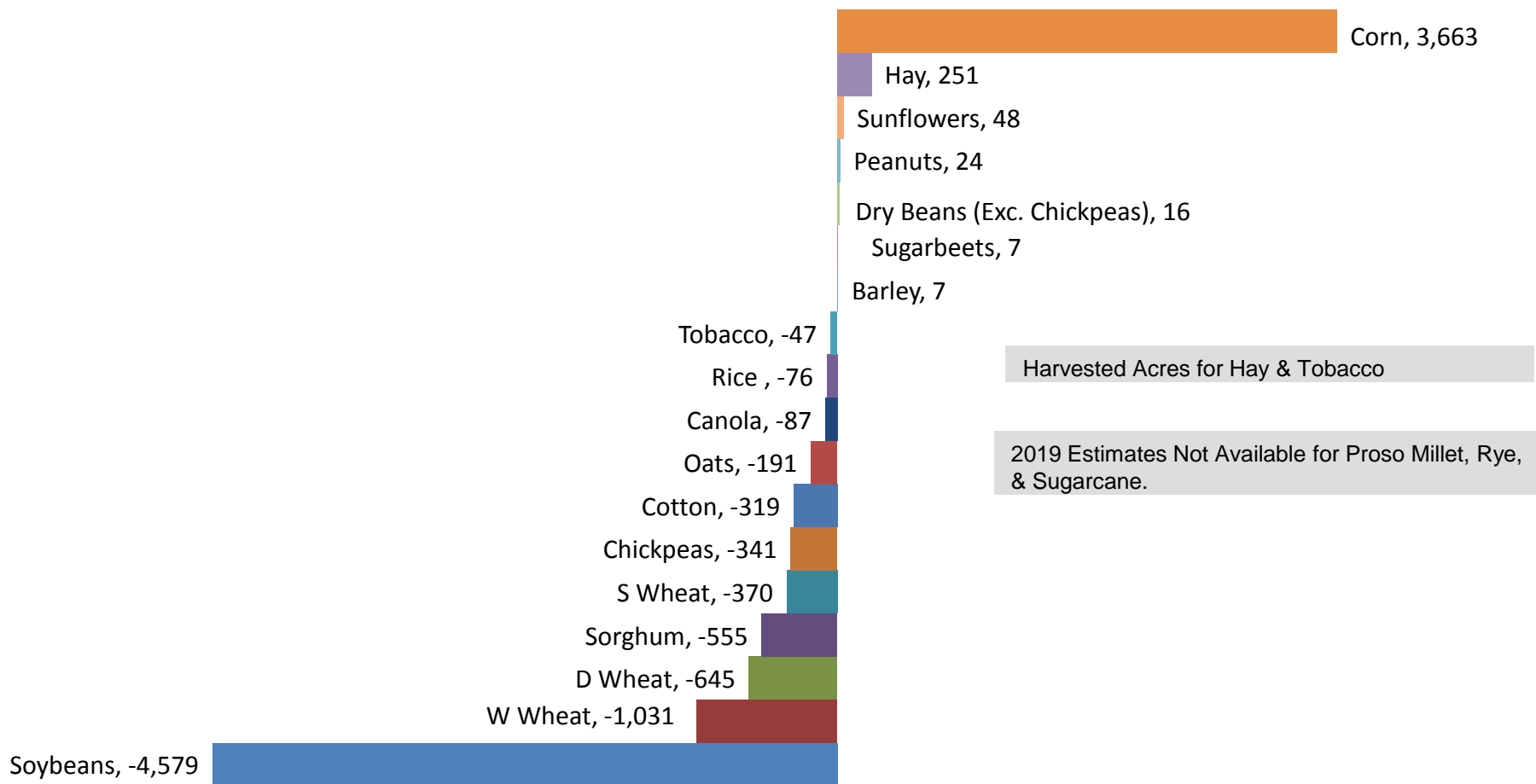


March 2019 Prospective Plantings

Crop	Unit	March 2019	% Change From Previous Estimate	% Change From Previous Season
Other Crops				
All Cotton	Mil Ac	13.8	NA	-2.3
All Hay	Mil Ac	53.1	NA	+0.5
Sugarbeets	Mil Ac	1.12	NA	+0.6
Tobacco	Thou Ac	244	NA	-16.3
Dry Edible Beans	Mil Ac	1.24	NA	+1.3
Chickpeas	Thou Ac	519	NA	-39.6
Lentils	Thou Ac	555	NA	-28.8
Dry Edible Peas	Thou Ac	881	NA	+2.9

Principal Crop Planted Acres (000)

2019 Change From 2018





March 2019 Grain Stocks

Crop	Unit	March 2019	% Change From Previous Estimate	% Change From Previous Year
Stocks				
Corn	Bil Bu	8.60	NA	-3.2
Soybeans	Bil Bu	2.72	NA	+28.7
Sorghum	Mil Bu	193	NA	+37.4
Sunflower	Mil Lbs	828	NA	-33.1
Rice	Mil Cwt	104	NA	+24.5

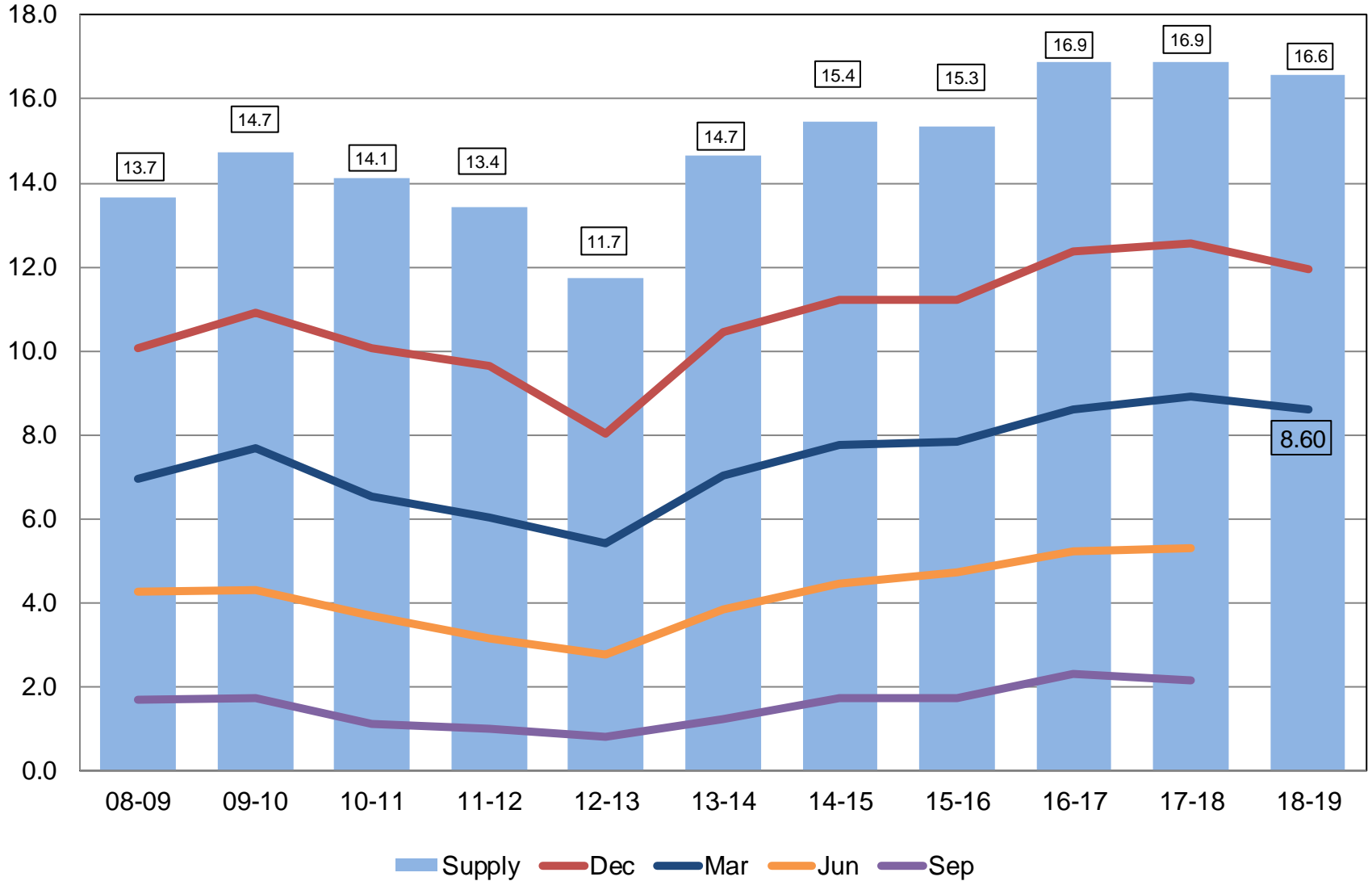


March 2019 Grain Stocks

Crop	Unit	March 2019	% Change From Previous Estimate	% Change From Previous Year
Stocks				
All Wheat	Bil Bu	1.59	NA	+6.4
Barley	Mil Bu	121	NA	-6.7
Oats	Mil Bu	50.2	NA	-8.6

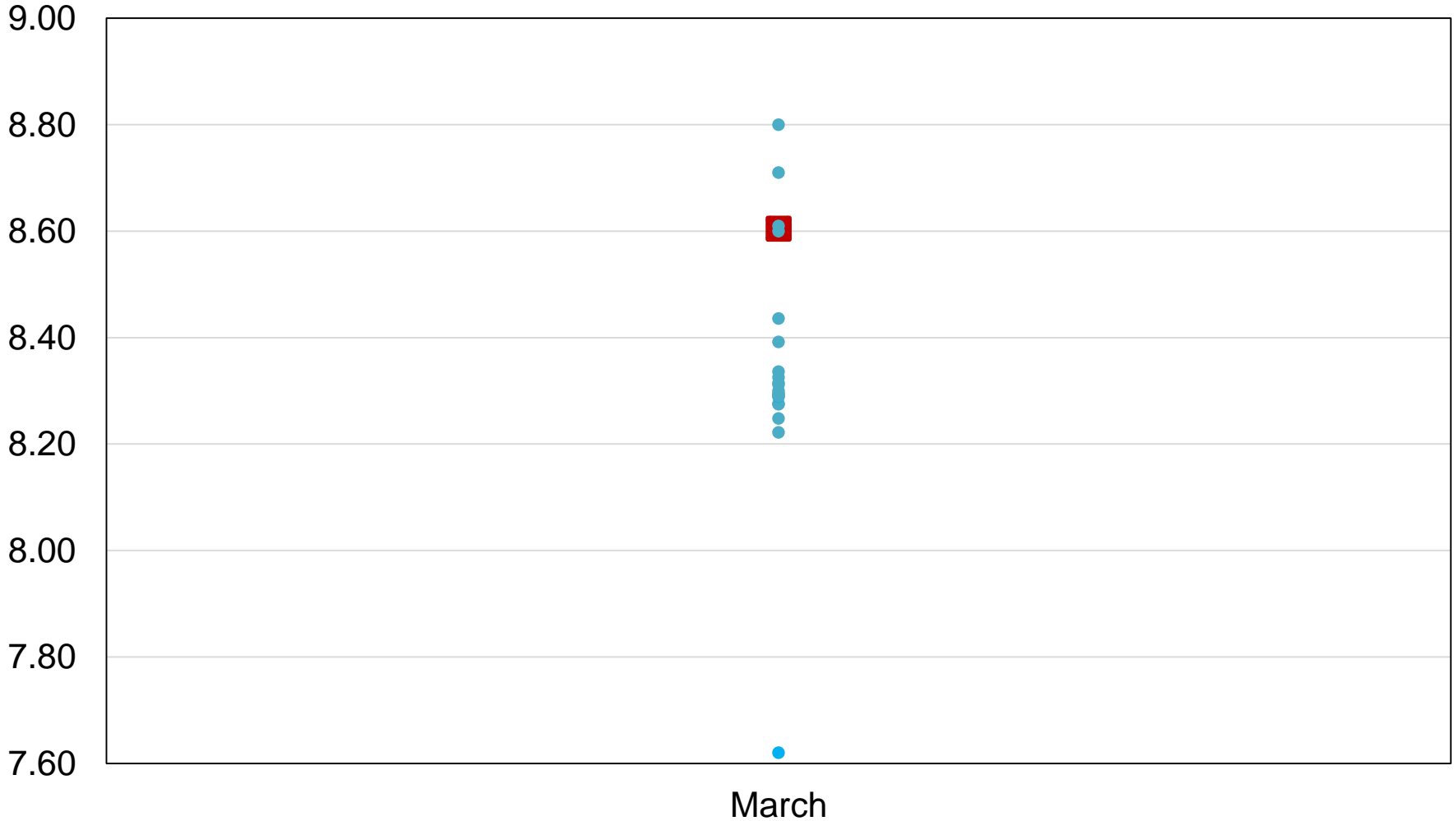
Corn Stocks United States



Billion Bushels



2019 United States Corn Stocks Industry Expectations vs NASS

Billion Bushels

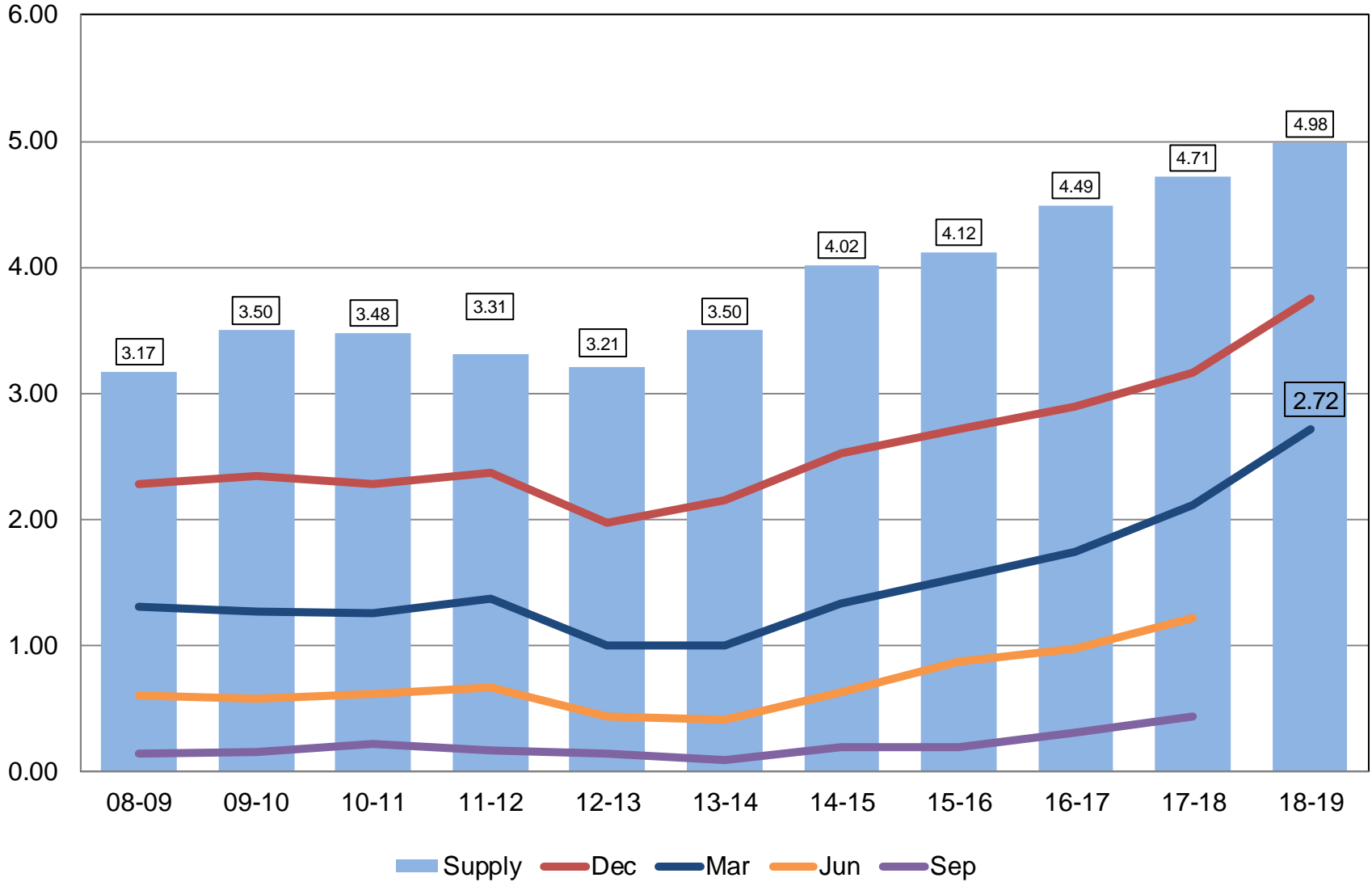


 NASS Estimate  Individual Industry Expectation



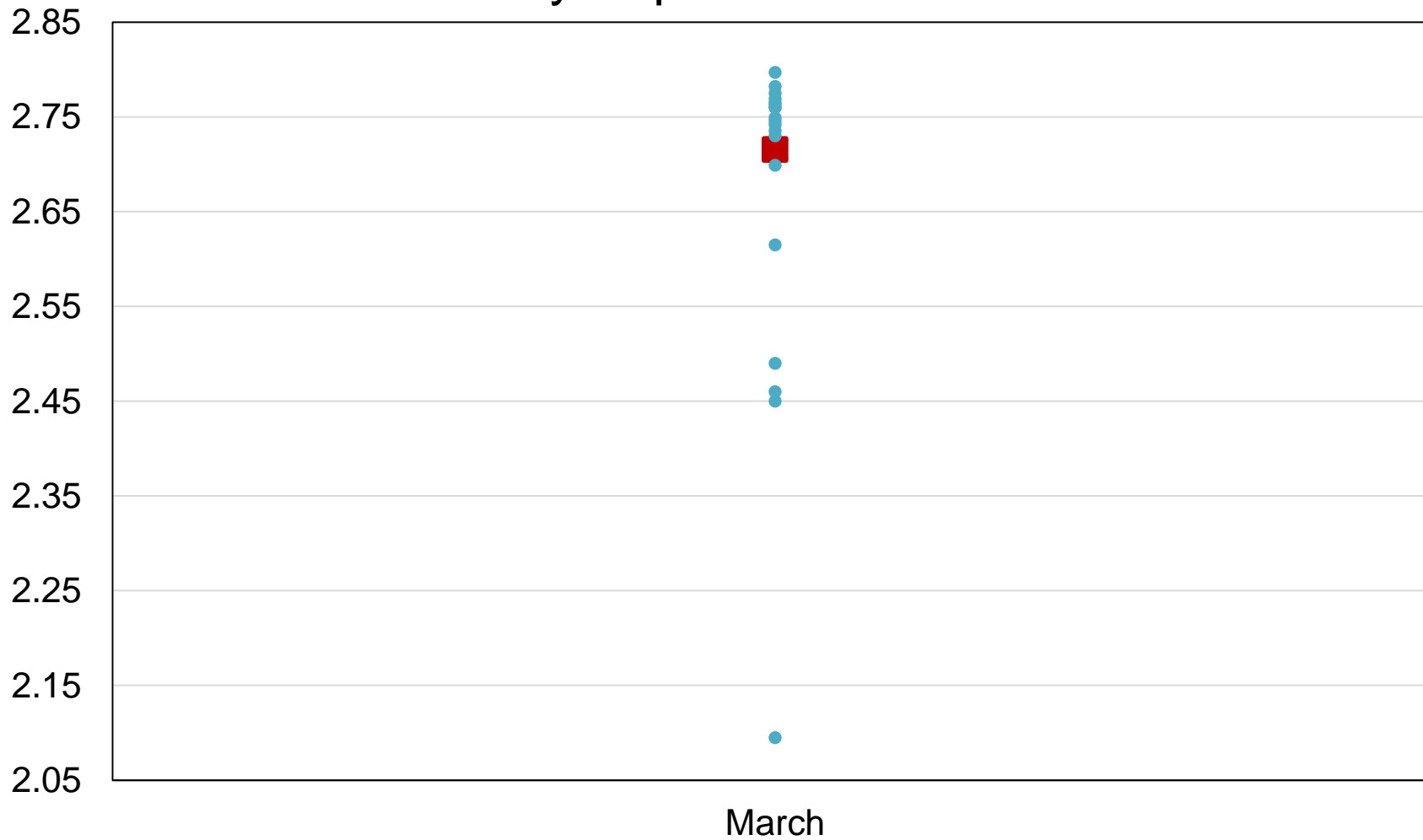
Soybean Stocks United States

Billion Bushels



2019 United States Soybean Stocks Industry Expectations vs NASS

Billion Bushels

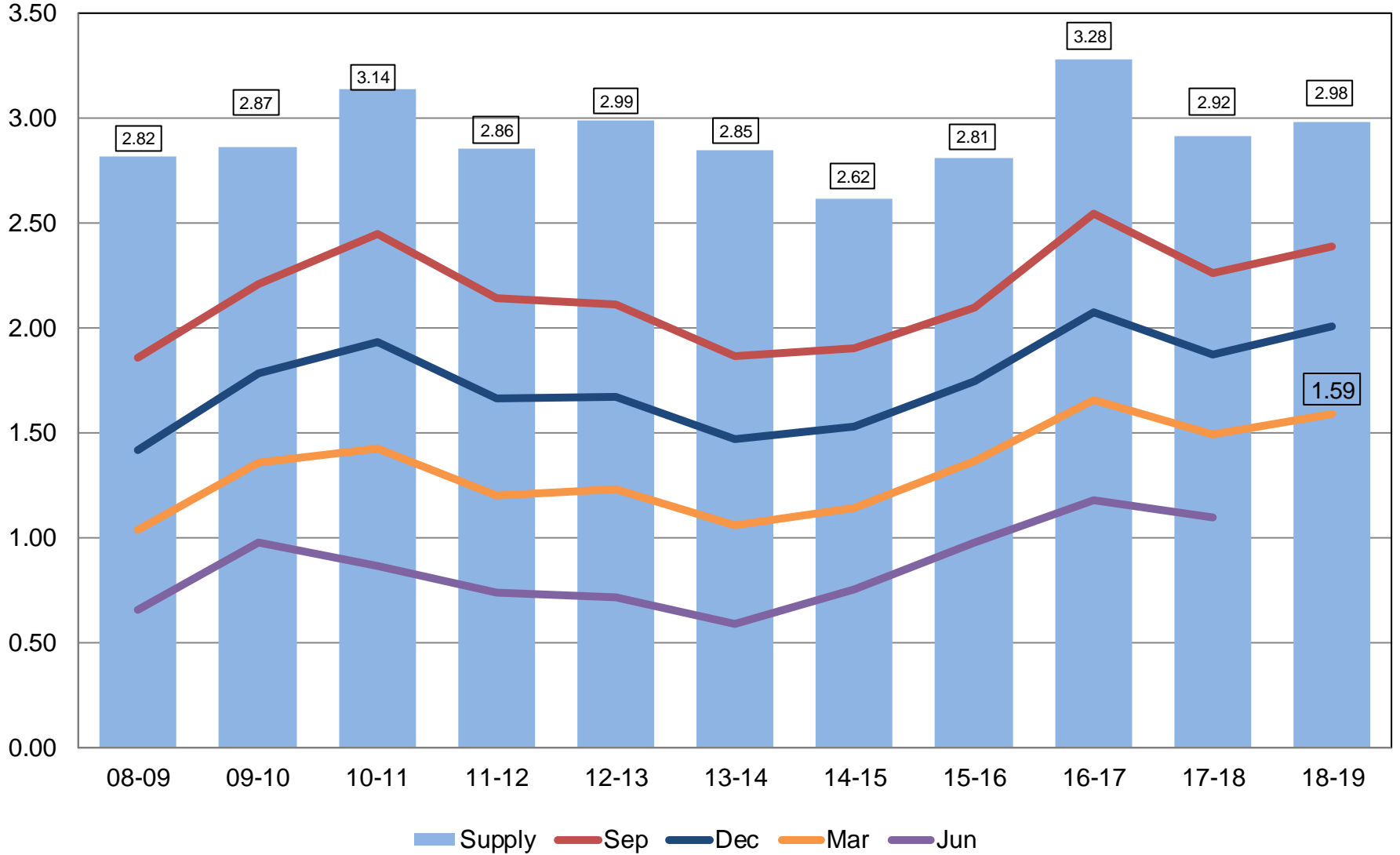


NASS Estimate Individual Industry Expectation



All Wheat Stocks United States

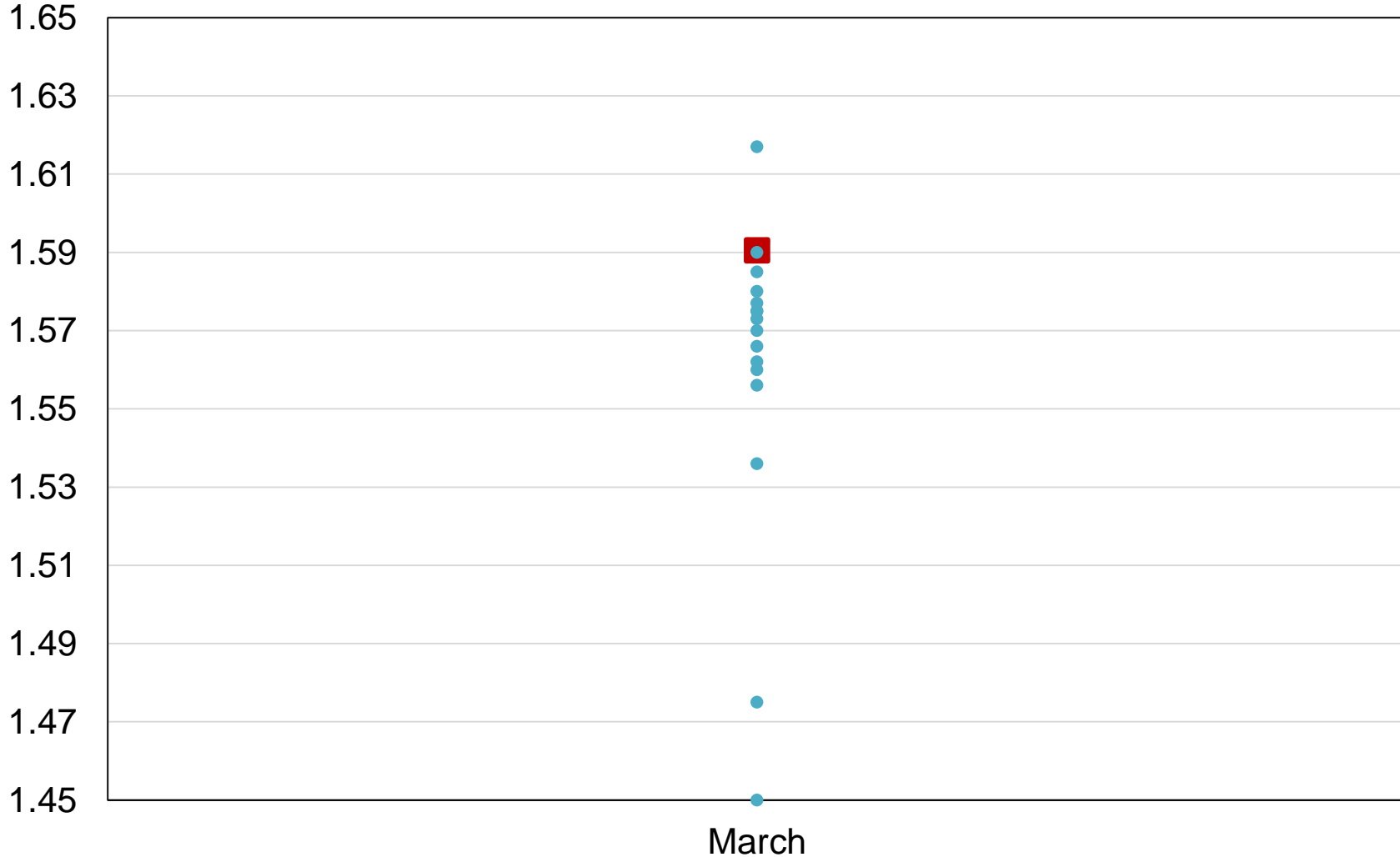
Billion Bushels





2019 United States All Wheat Stocks Industry Expectations vs NASS

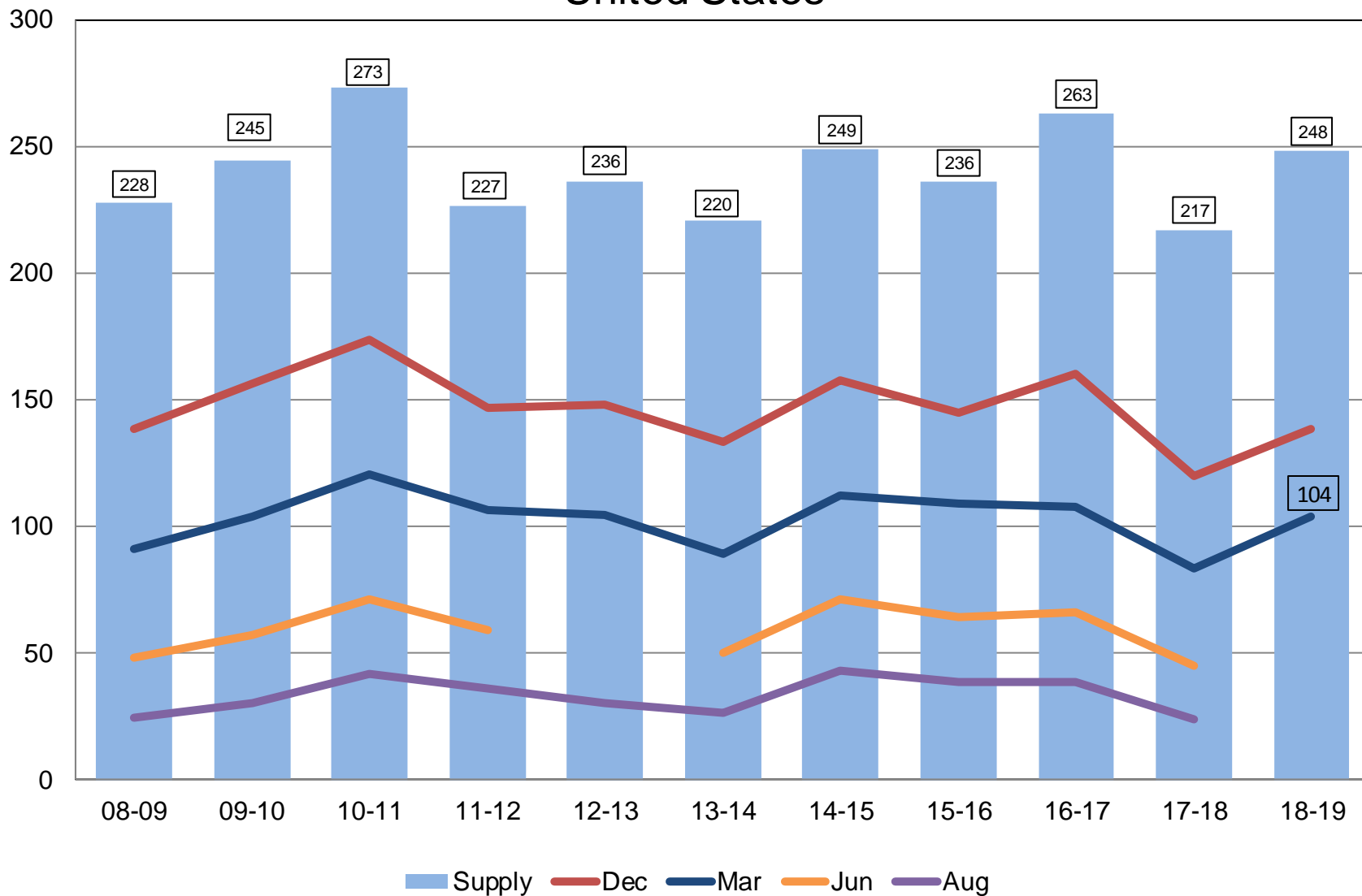
Billion Bushels



NASS Estimate Individual Industry Expectation

Rough Rice Stocks United States

Million Hundredweight





Upcoming Reports

Release Date	Report Title
April 1	CAIR: Grain Crushings, Fats & Oils, and Cotton System Crop Progress
April 9	Crop Production
April 11	2017 Census of Agriculture
April 18	Cattle on Feed
April 30	Agricultural Prices



USDA NASS Data Users' Meeting
Tuesday, April 23, 2019

University of Chicago – Gleacher Center
450 North Cityfront Plaza Drive
Chicago, IL 60611
312-464-8787

Join @usda_nass on Twitter using #StatChat
on Friday, March 29 at 1 p.m. ET.

Lance Honig will be available to discuss the latest
Prospective Plantings & Grain Stocks reports.

You may tweet or DM your questions
in advance to @usda_nass.



STAT
CHAT
SERIES

**FRI,
MAR 29
@ 1PM ET**





United States Department of Agriculture
National Agricultural Statistics Service

All Reports Available At
www.nass.usda.gov

For Questions
202-720-2127
800-727-9540
nass@nass.usda.gov