



United States Department of Agriculture
National Agricultural Statistics Service

May Crop Production
Executive Summary

Lance Honig, Chief
Crops Branch



Contents

Field Crops	Fruit & Nuts
Winter Wheat	Citrus
Hay Stocks	Peaches (CA)
Cotton	Almonds (CA)



Survey Overview

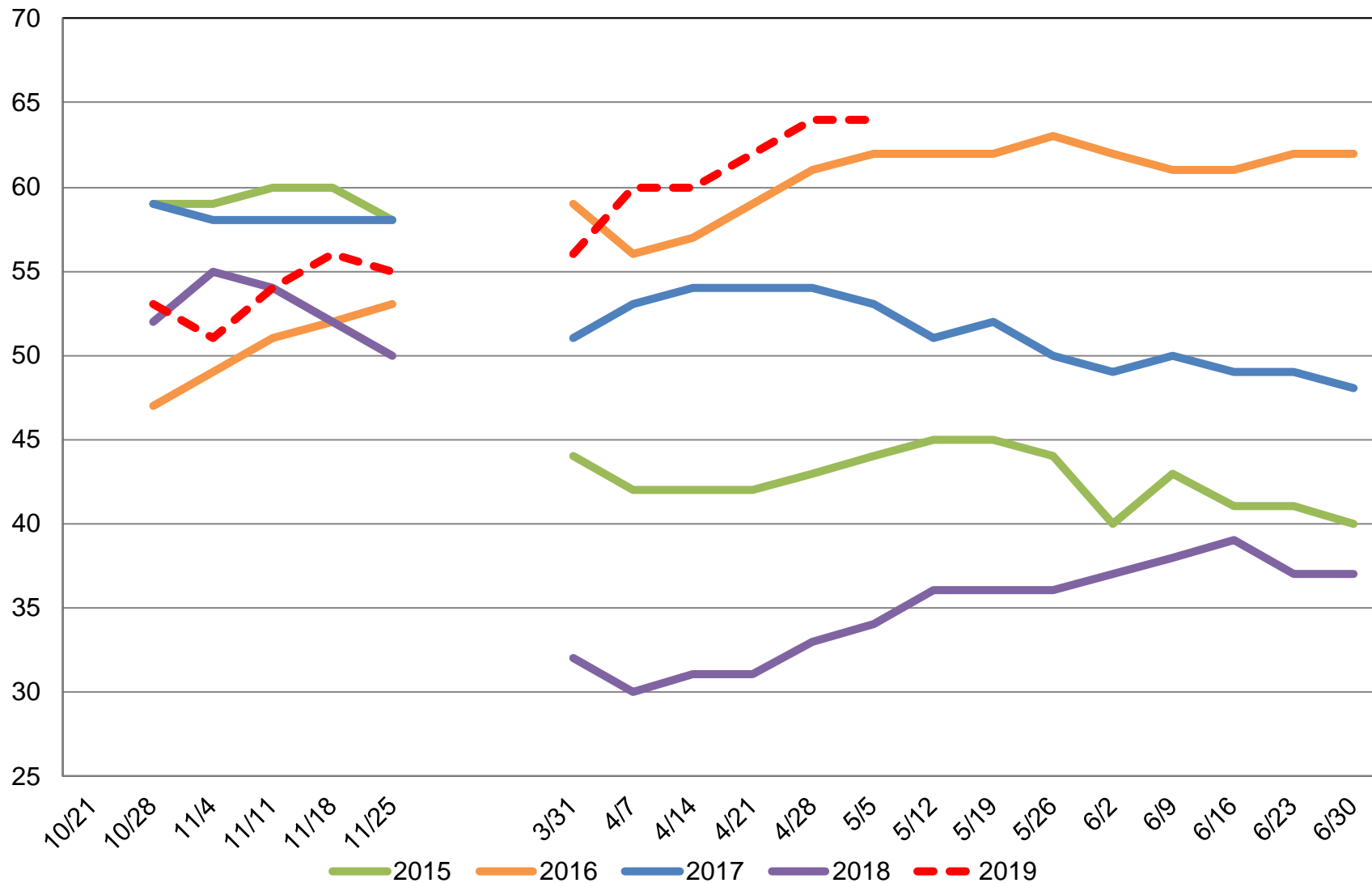
	Ag Yield	Objective Yield
Survey Type	Farmer Reported	Field Measurement
Crops Included	Winter and Durum Wheat Hay Stocks	Winter Wheat
States	All except AK and HI	KS, OK, TX
Sample Size	10,493	244
Collection Period	Apr 29 - May 7	Apr 24 - May 1



U.S. Winter Wheat Condition

Percent Rated Good to Excellent

Percent





May 2019 Crop Production

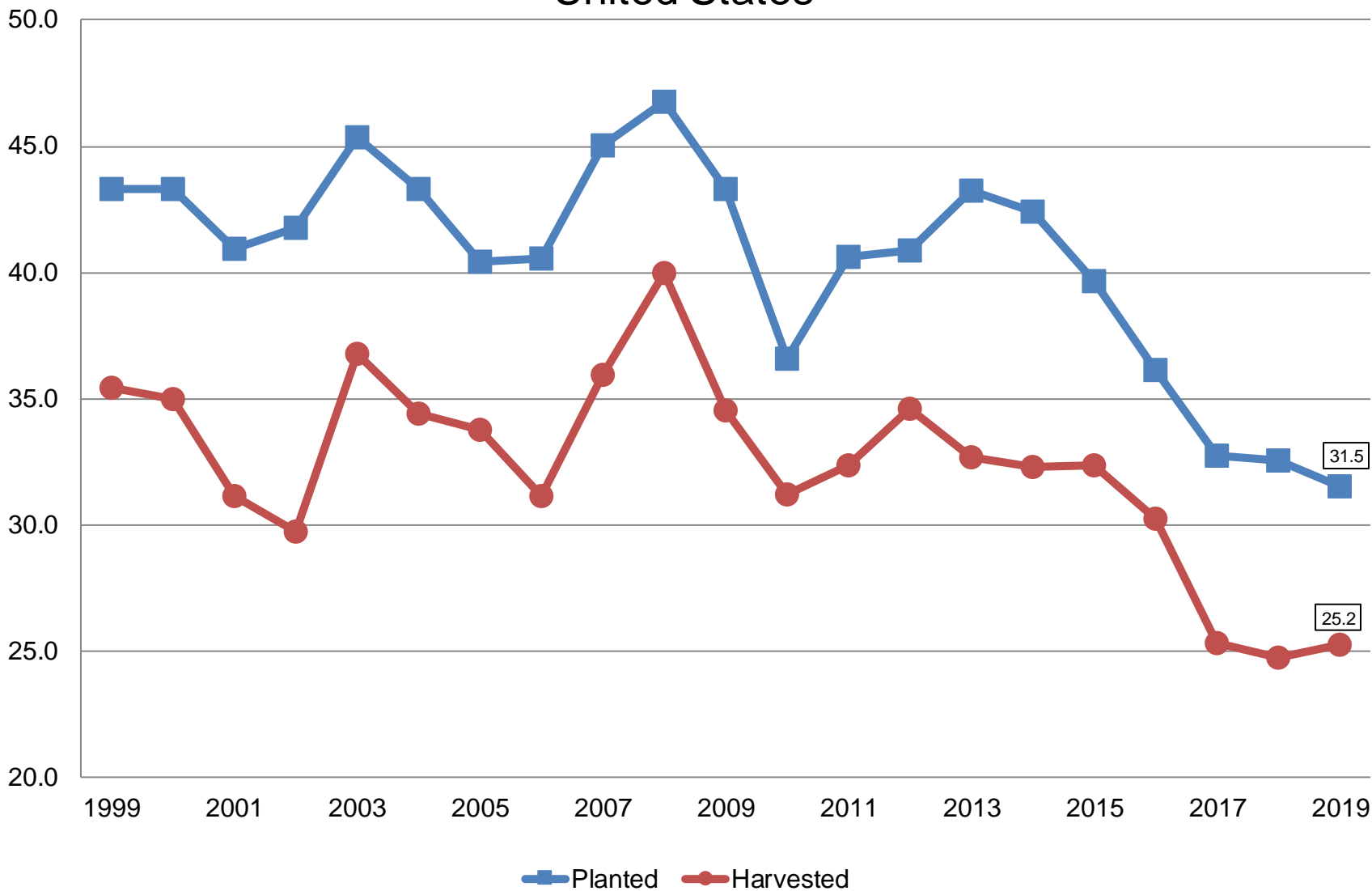
Crop	Unit	May 2019	% Change From Previous Forecast	% Change From Previous Season
Wheat, Winter				
Harvested	Mil Ac	25.2	NA	+1.9
Yield	Bu/Ac	50.3	NA	+5.0
Production	Bil Bu	1.27	NA	+7.1



Winter Wheat Acres

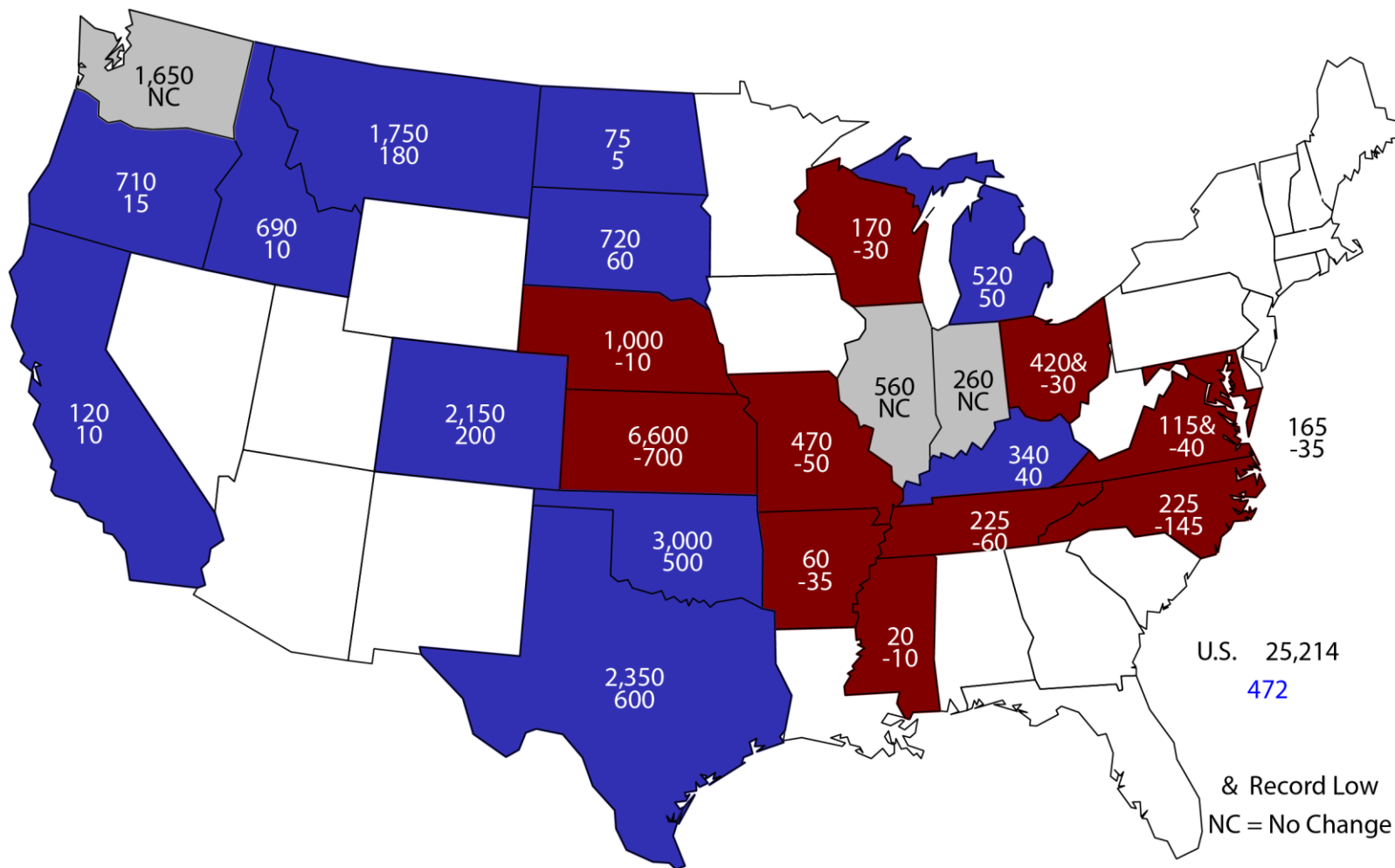
United States

Million Acres



2019 Winter Wheat Harvested Area

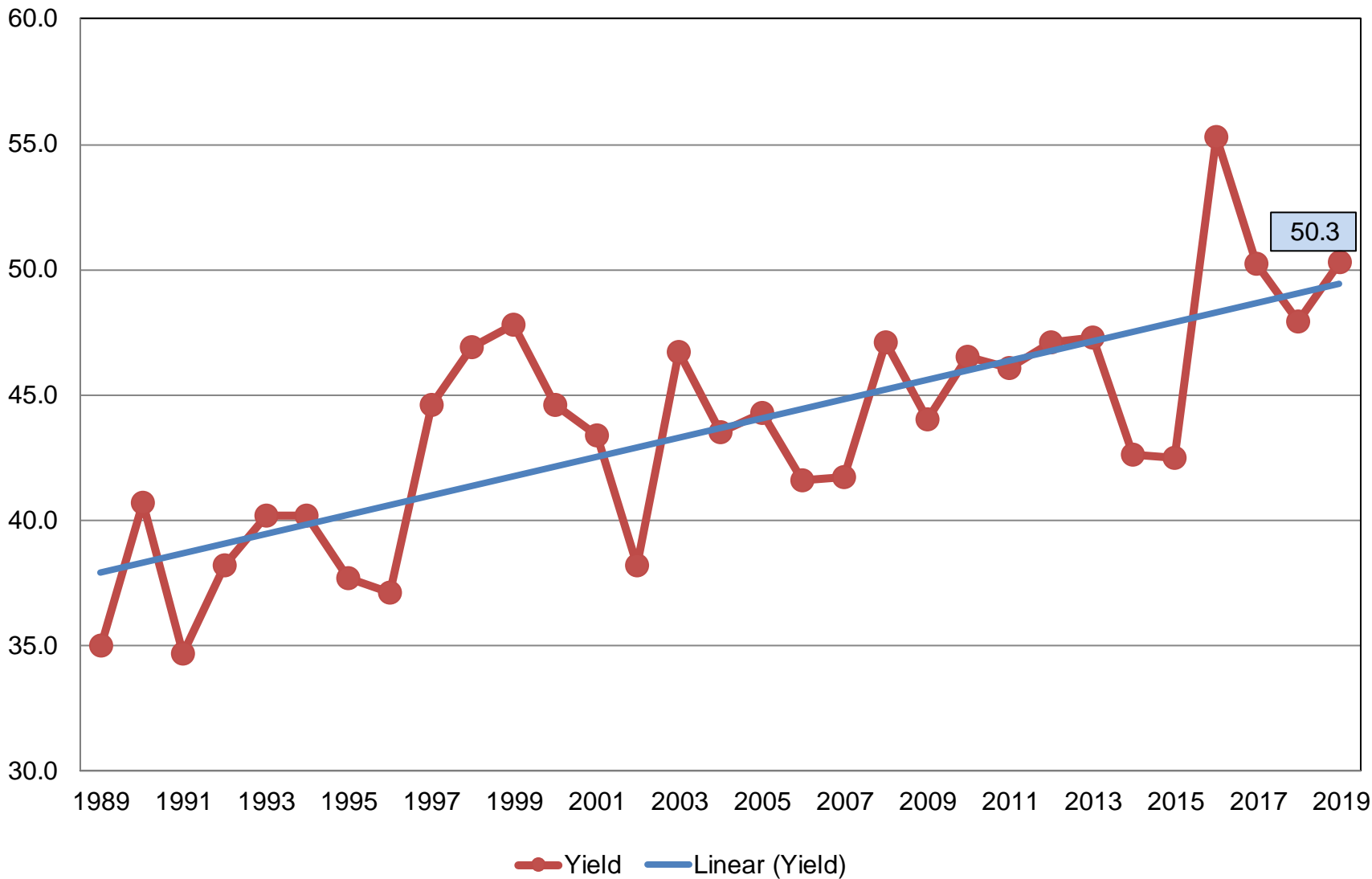
(000) Acres and Change From Previous Year



& Record Low
NC = No Change

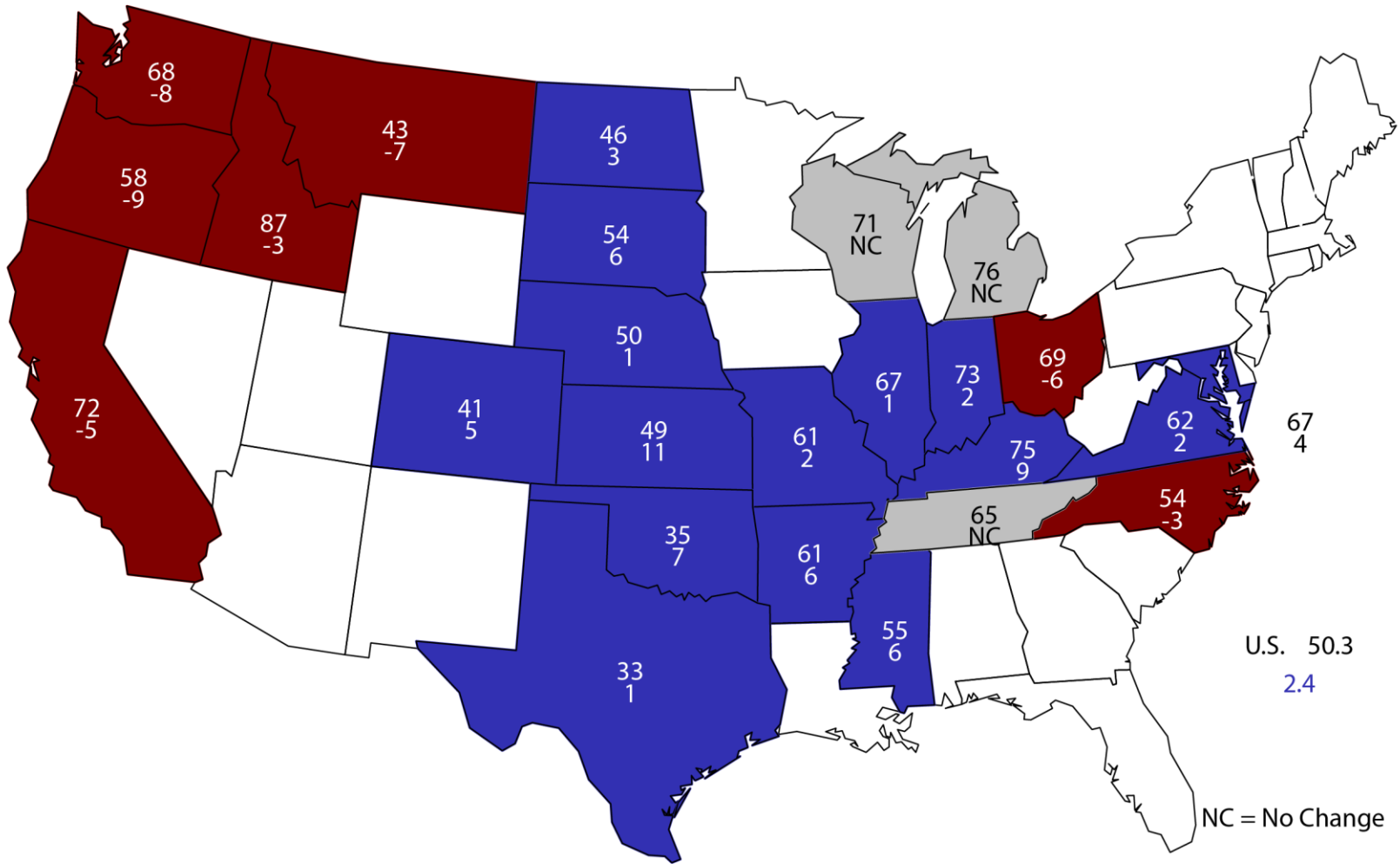
Winter Wheat Yield United States

Bushels per Acre



May 1, 2019 Winter Wheat Yield

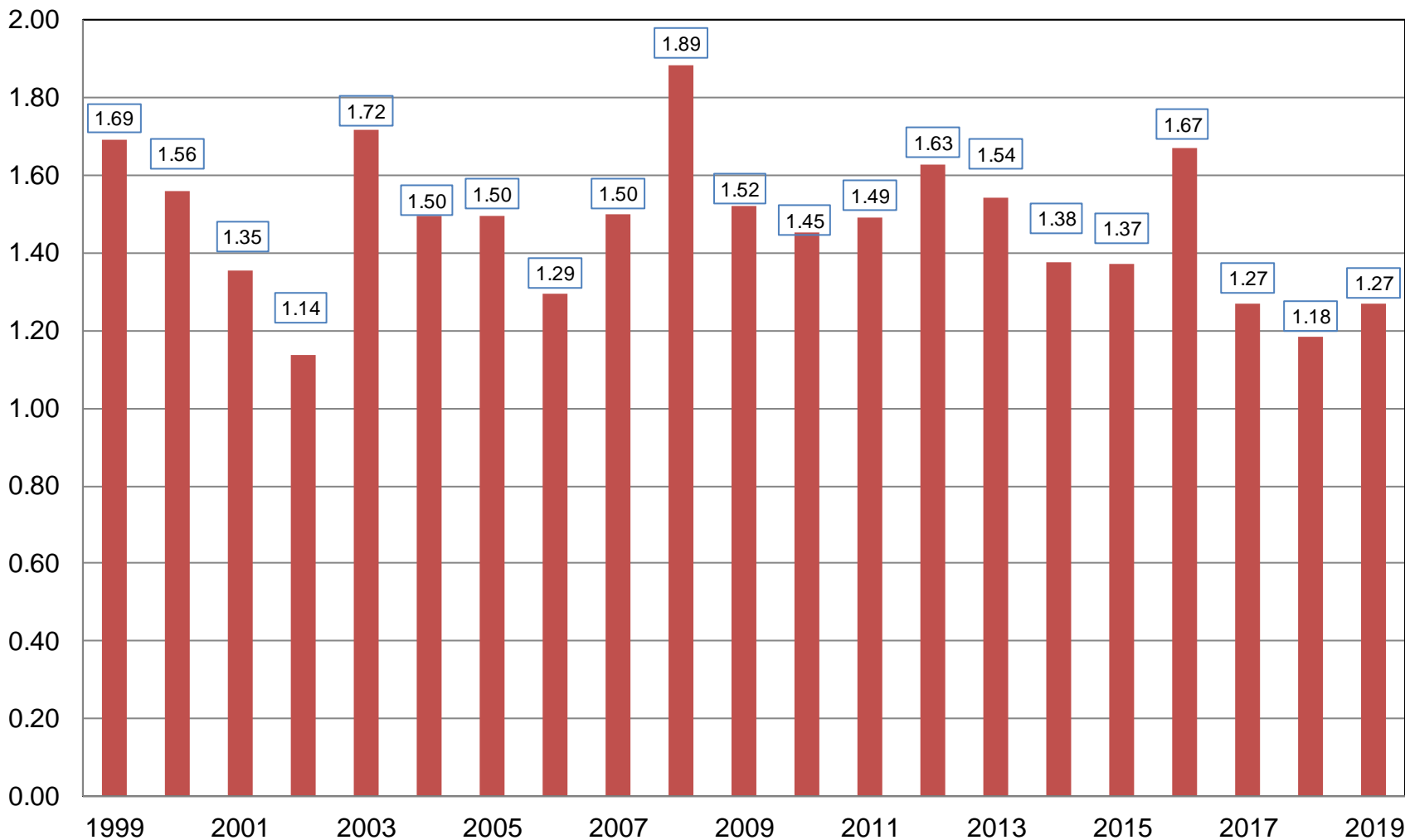
Bushels and Change From Previous Year



NC = No Change

Winter Wheat Production United States

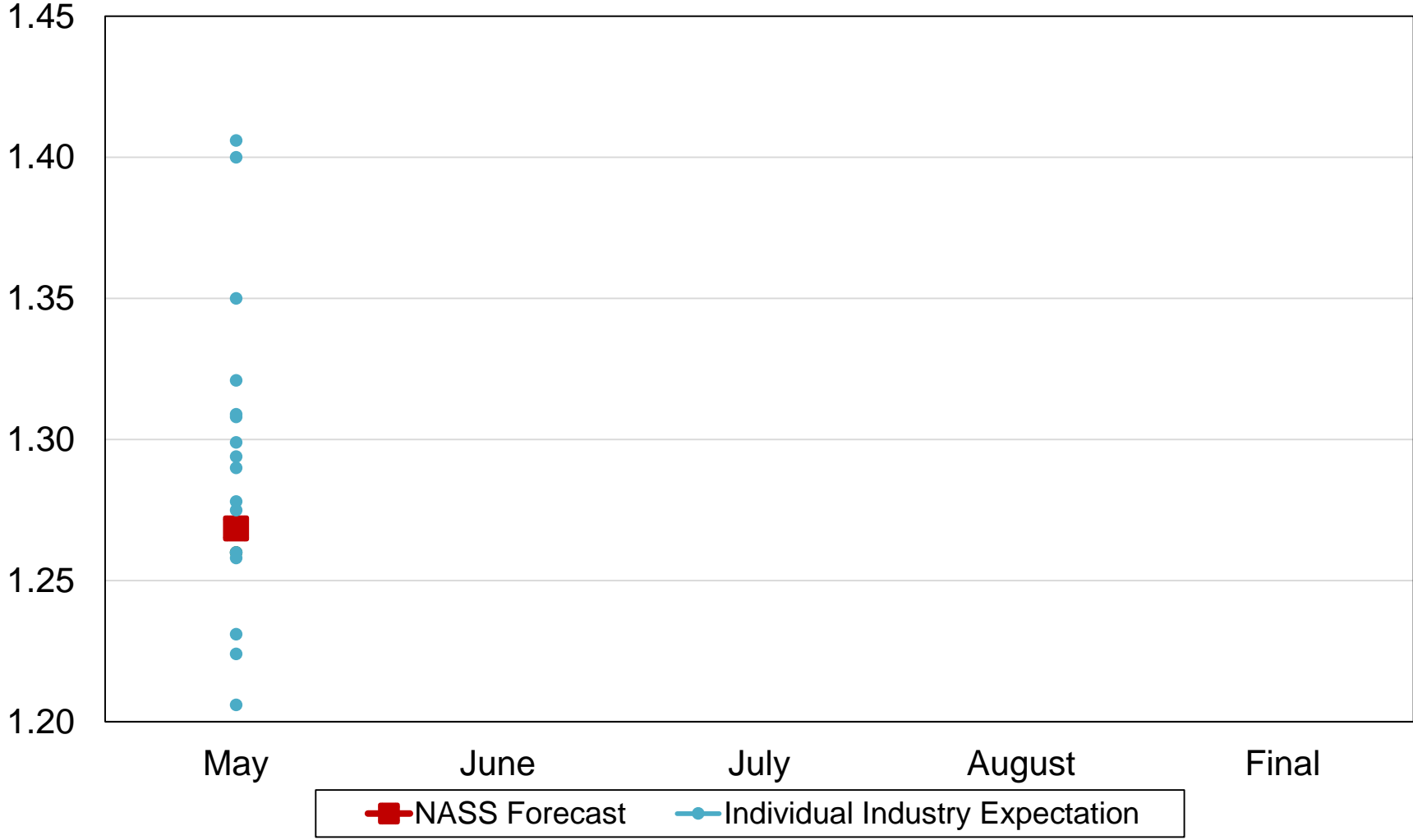
Billion Bushels





2019 United States Winter Wheat Production Industry Expectations vs NASS

Billion Bushels



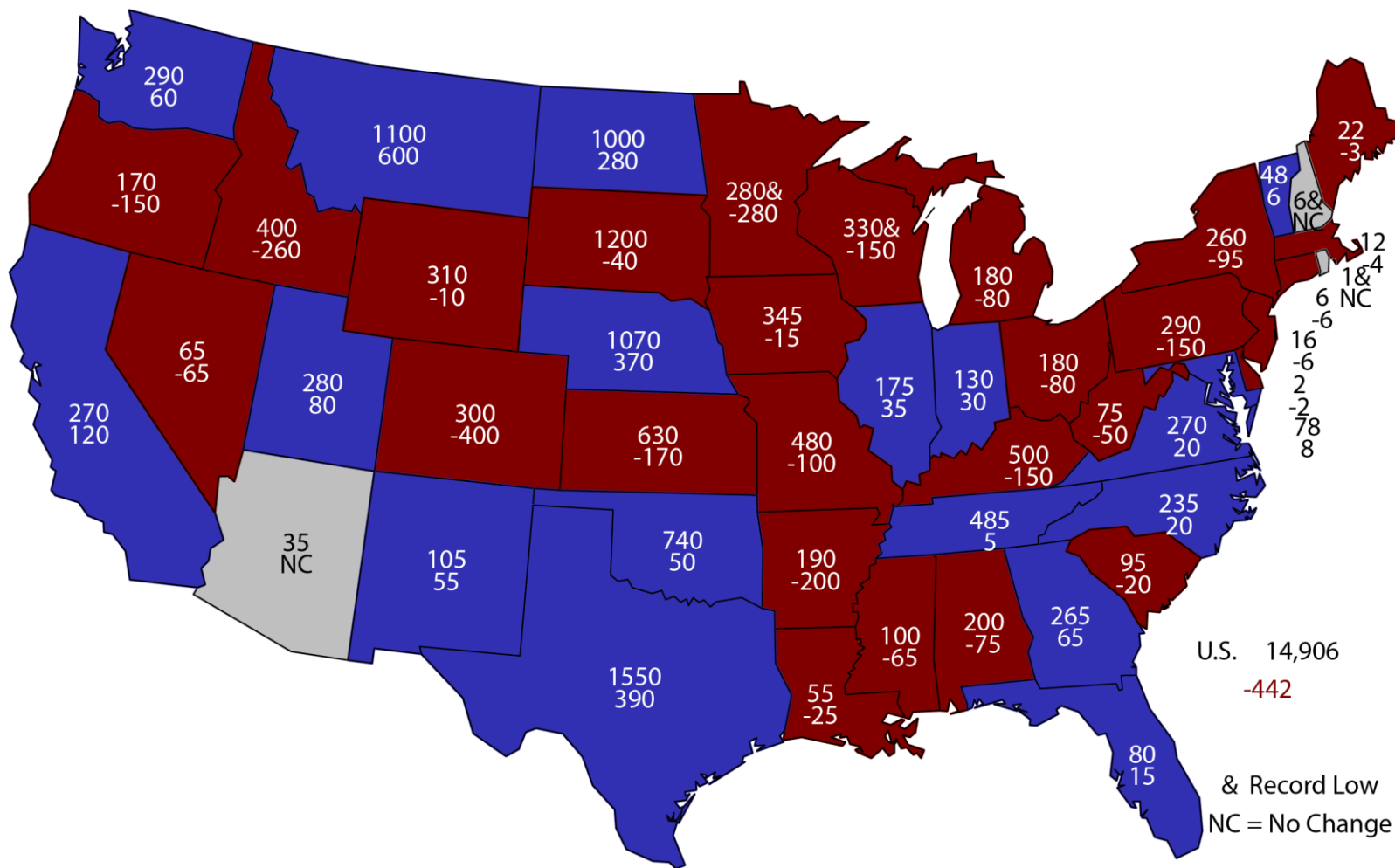


May 2019 Crop Production

Crop	Unit	May 2019	% Change From Previous Forecast	% Change From Previous Season
All Hay				
Stocks	Mil Tons	14.9	NA	-2.9

May 1, 2019 Hay Stocks

(000) Tons and Change From Previous Year



U.S. 14,906
-442

& Record Low
NC = No Change

Survey Overview

	Objective Measurement	Row Count	Processor's Inquiry
Survey Type	Field Measurement	Field Observation	Mailed Survey
Crops Included	Oranges	Oranges, Grapefruit, Late Tangerines and Tangelos	Valencia Oranges, Grapefruit
Sample Size	623 Groves	59,482 Rows	6 Processors
Collection Period	April 22-26	April 29-30	April 12-30



May 2019 Crop Production

Crop	Unit	May 2019	% Change From Previous Forecast	% Change From Previous Season
Production				
Oranges	Mil Tons	5.30	-3.4	+35.0
Grapefruit	Thou Tons	607	-2.1	+17.4
Tangerines & Mandarins	Thou Tons	928	+0.3	+15.4



May 2019 Crop Production

Crop	Unit	May 2019	% Change From Previous Forecast	% Change From Previous Season
Production				
Almonds (CA)	Bil Lbs	2.50	NA	+9.6
Peaches (CA)	Thou Tons	480	NA	-5.9

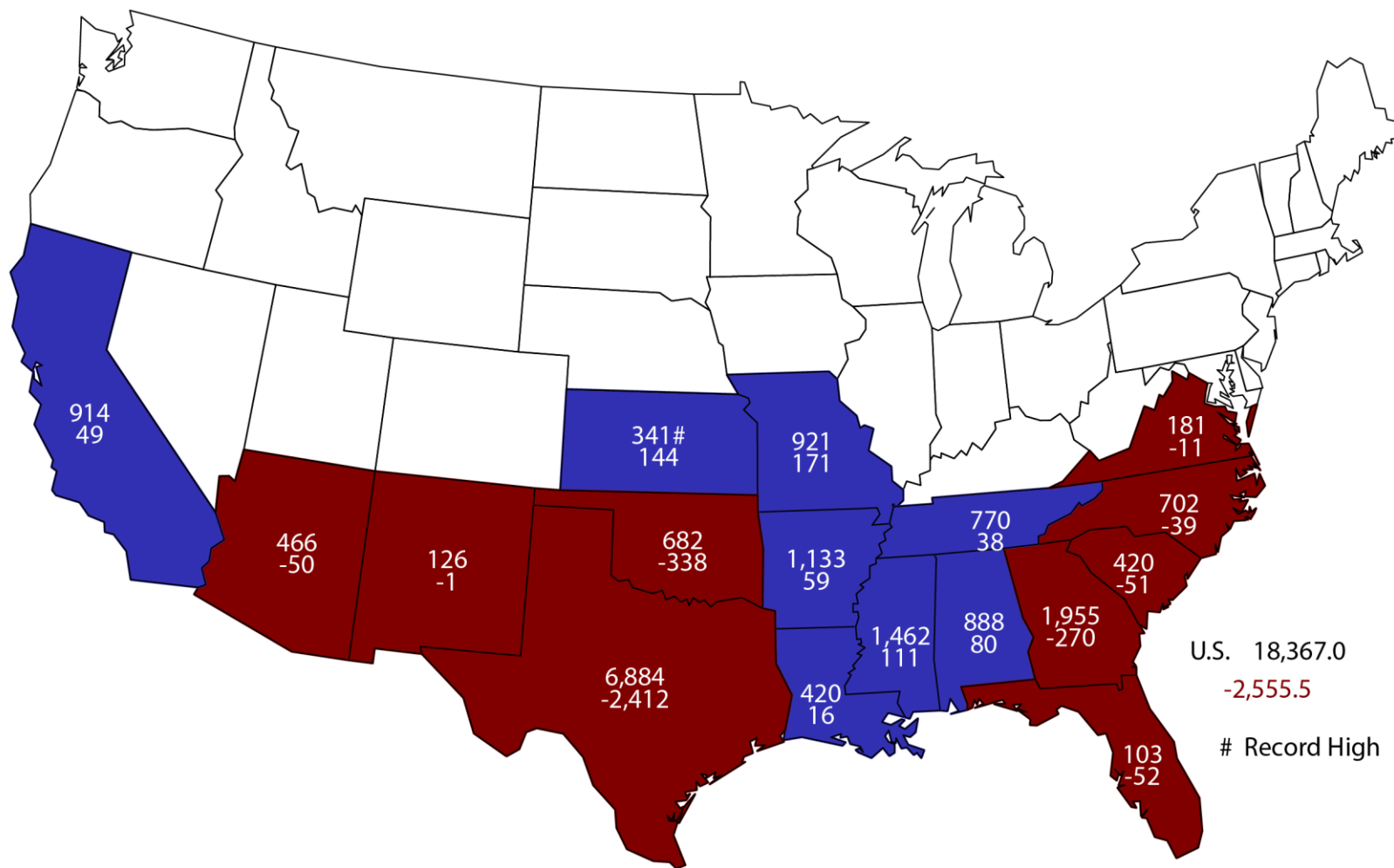


May 2019 Crop Production

Crop	Unit	Final 2018	% Change From Previous Estimate	% Change From Previous Season
All Cotton				
Planted	Mil Ac	14.1	+<0.1	+10.9
Harvested	Mil Ac	10.2	-3.1	-8.1
Yield	Lb/Ac	864	+3.1	-4.5
Production	Mil Bls	18.4	-0.1	-12.2
Cottonseed				
Production	Mil Tons	5.63	-2.8	-12.3

2018 All Cotton Production

Bales (000) and Change From Previous Year



U.S. 18,367.0
-2,555.5

Record High



Upcoming Reports

Release Date	Report Title
May 10	Cotton County Estimates
May 24	Cattle on Feed
May 31	Agricultural Prices
June 3	CAIR: Cotton System, Fats & Oil, and Grain Crushings
June 11	Crop Production
June 21	Cattle on Feed
June 26	Census: Congressional District Rankings
June 27	Agricultural Prices Hogs and Pigs
June 28	Acreage, Grain Stocks, Rice Stocks

STAT CHAT SERIES

Join @usda_nass and Lance Honig using #StatChat to ask about crop production and the winter wheat forecast.

@usda_nass
#STATCHAT



**FRI
MAY 10
1PM ET**





United States Department of Agriculture
National Agricultural Statistics Service

All Reports Available At
www.nass.usda.gov

For Questions
202-720-2127
800-727-9540
nass@nass.usda.gov