



United States Department of Agriculture
National Agricultural Statistics Service

August Crop Production
Executive Summary

Lance Honig, Chief
Crops Branch



Contents

Field Crops	Fruit and Nuts	Specialty Crops
Corn	Peaches	Dry Beans
Soybeans	Apples	Tobacco
Cotton	Pears	Sugarbeets
Wheat	Grapes	Sugarcane
Oats	Cranberries	Hops
Barley		
Sorghum		
Alfalfa & Other Hay		
Rice		
Peanuts		

Survey Overview

	June Re-Interview	Ag Yield	Objective Yield
Survey Type	Farmer Reported	Farmer Reported	Field Measurement
Crops Included	Corn, Cotton, Sorghum, and Soybeans	Field Crops	Winter Wheat
Sample Size	7,683	20,837	1,040
Collection Period	July 8 – July 24	July 30 – Aug 6	July 25 – Aug 1



CORN ACREAGE
What is Included in NASS Estimates



To assist users who may have questions about what is included in NASS corn acreage estimates, the table below documents whether or not acres are included for a number of scenarios. NASS procedures for inclusion and exclusion are unchanged from previous years.

Scenario Description	Included in NASS Corn Estimates		
	Planted Acres	Grain Harvested Acres	Silage Harvested Acres ^{1/}
Planted and Expected to be Harvested for Grain	Yes	Yes	No
Planted and Expected to be Harvested for Seed	Yes	Yes	No
Planted to Other Crop that Failed, then Planted to Corn and Expected to be Harvested for Grain	Yes	Yes	No
Planted, Failed, Replanted to Corn and Expected to be Harvested for Grain	Yes (Counted Once)	Yes	No
Planted and Expected to be Harvested for Silage	Yes	No	Yes
Planted and Originally Expected to be Harvested for Grain, but Now Expected to be Harvested for Silage	Yes	No	Yes
Took Prevented Plant Claim for Any Crop, Planted Corn as Cover Crop for Silage	Yes	No	Yes
Planted, but Failed	Yes	No	No
Planted and Expected to be Harvested for Hay/Forage	Yes	No	No
Planted, Failed, then Planted to Other Crop	Yes	No	No
Intended to be Planted, Didn't Plant, Took Prevented Plant Claim	No	No	No
Intended to be Planted, Didn't Plant, and Didn't Take Prevented Plant Claim	No	No	No

^{1/} Estimates only published at end of season.

Questions: Contact Lance Honig, Crops Branch Chief - Lance.Honig@usda.gov

Updated: August 9, 2019



SOYBEAN ACREAGE
What is Included in NASS Estimates



To assist users who may have questions about what is included in NASS soybean acreage estimates, the table below documents whether or not acres are included for a number of scenarios. NASS procedures for inclusion and exclusion are unchanged from previous years.

Scenario Description	Included in NASS Soybean Estimates	
	Planted Acres	Harvested Acres
Planted and Expected to be Harvested for Beans	Yes	Yes
Planted and Expected to be Harvested for Seed	Yes	Yes
Planted to Other Crop that Failed, then Planted to Soybeans and Expected to be Harvested for Beans	Yes	Yes
Planted, Failed, Replanted to Soybeans and Expected to be Harvested for Beans	Yes (Counted Once)	Yes
Took Prevented Plant Claim for Any Crop, Planted Soybeans as Cover Crop for Hay	Yes	No
Planted, but Failed	Yes	No
Planted and Expected to be Harvested for Hay/Forage	Yes	No
Planted, Failed, then Planted to Other Crop	Yes	No
Intended to be Planted, Didn't Plant, Took Prevented Plant Claim	No	No
Intended to be Planted, Didn't Plant, and Didn't Take Prevented Plant Claim	No	No

Questions: Contact Lance Honig, Crops Branch Chief - Lance.Honig@usda.gov

Updated: August 9, 2019

[https://www.nass.usda.gov/Education and Outreach/Understanding Statistics/index.php](https://www.nass.usda.gov/Education_and_Outreach/Understanding_Statistics/index.php)



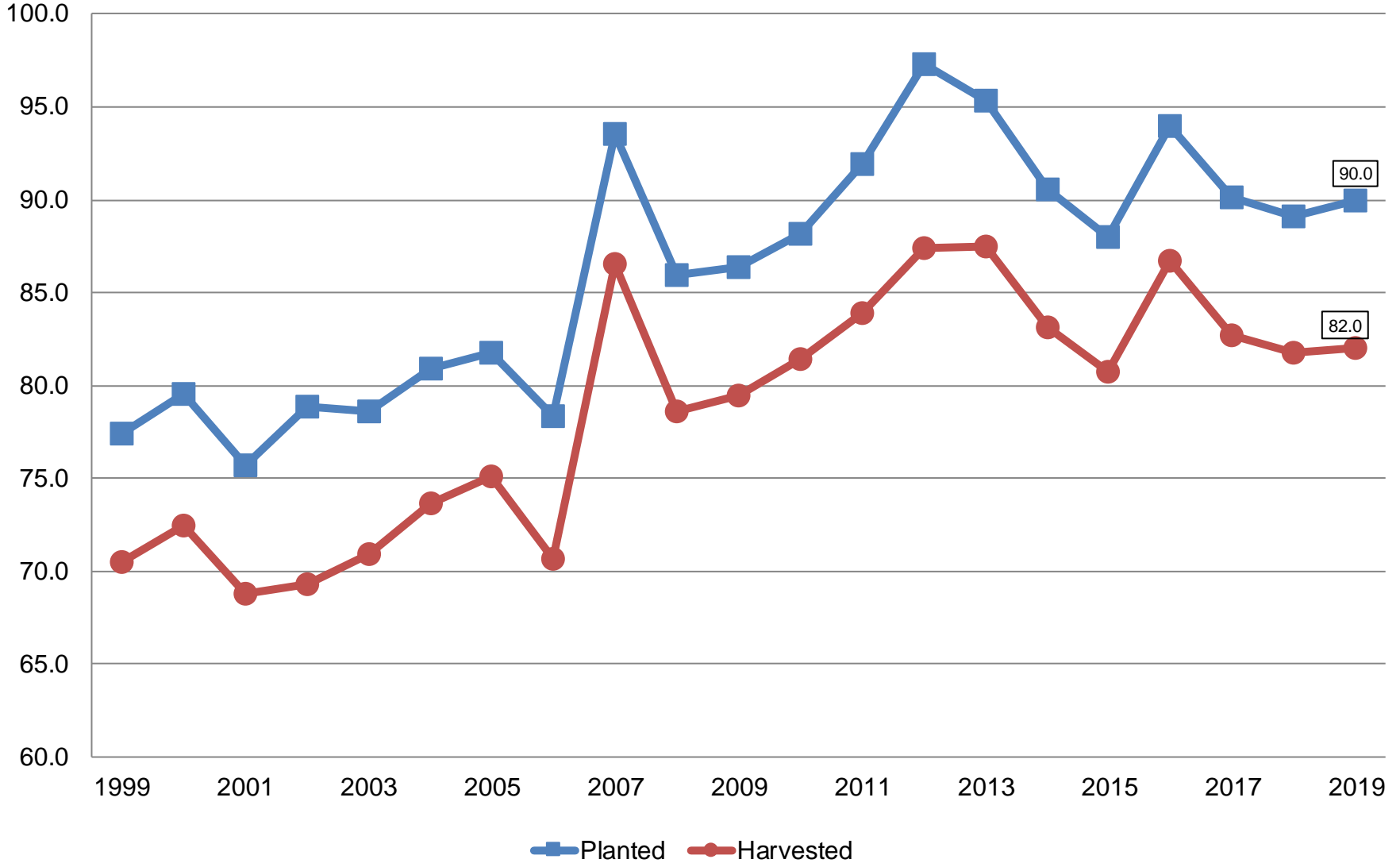
August 2019 Crop Production

Crop	Unit	August 2019	% Change From Previous Forecast	% Change From Previous Season
Corn				
Planted	Mil Ac	90.0	-1.8	+1.0
Harvested	Mil Ac	82.0	-1.9	+0.3
Yield	Bu/Ac	169.5	NA	-3.9
Production	Bil Bu	13.9	NA	-3.6



Corn Acres United States

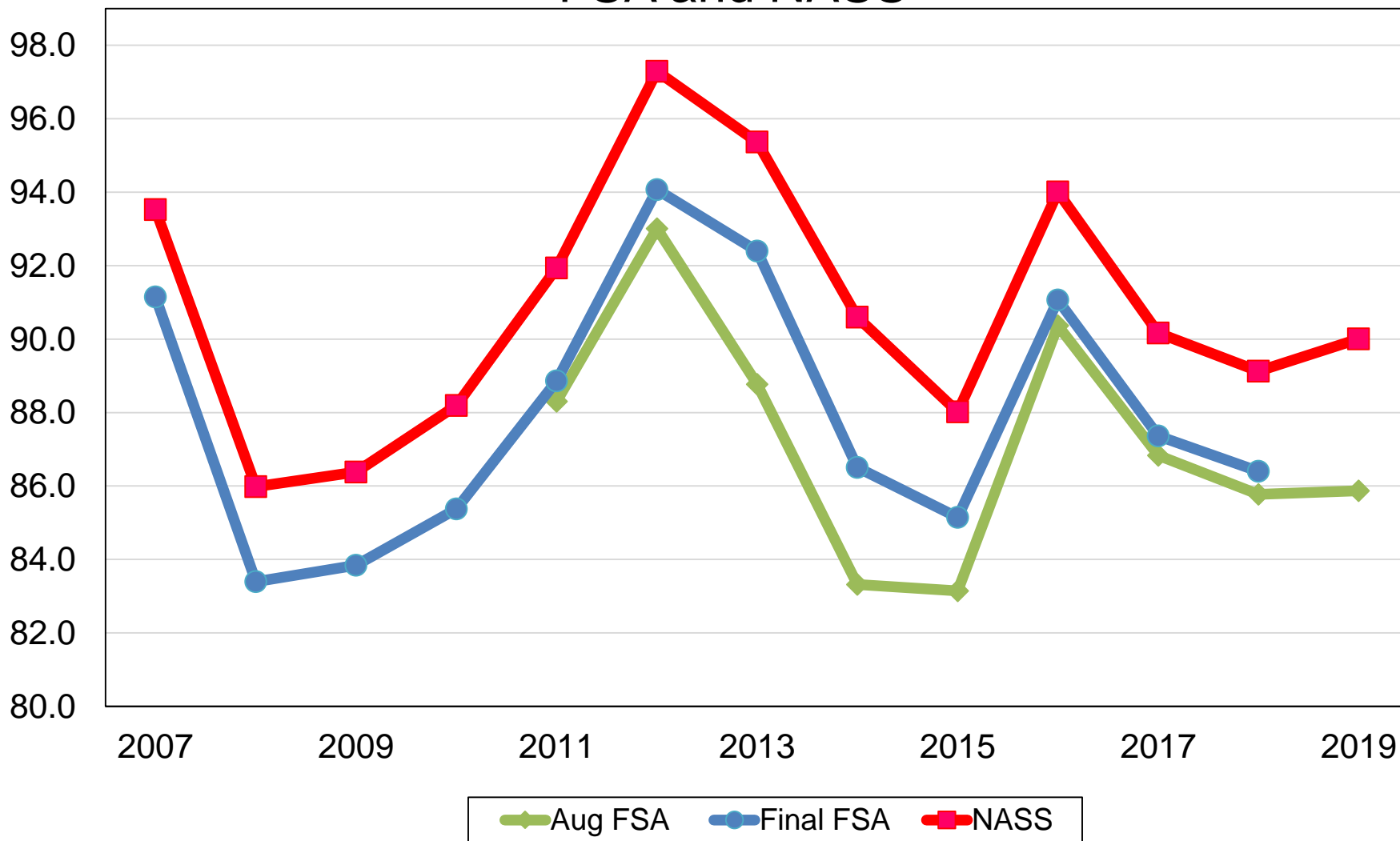
Million Acres





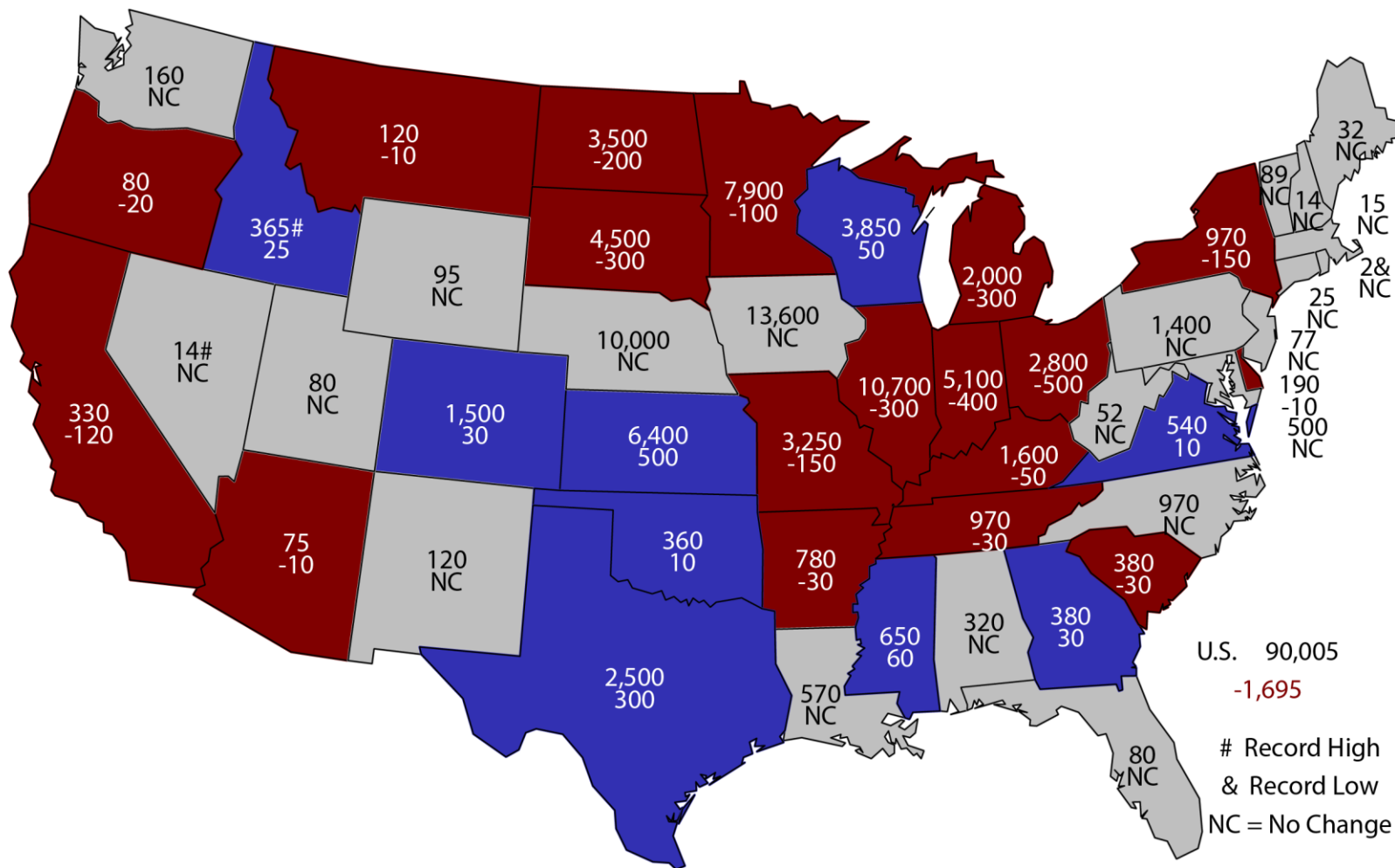
United States Corn Planted Acres FSA and NASS

Million Acres



2019 Corn Planted Area

(000) Acres and Change From Previous Estimate

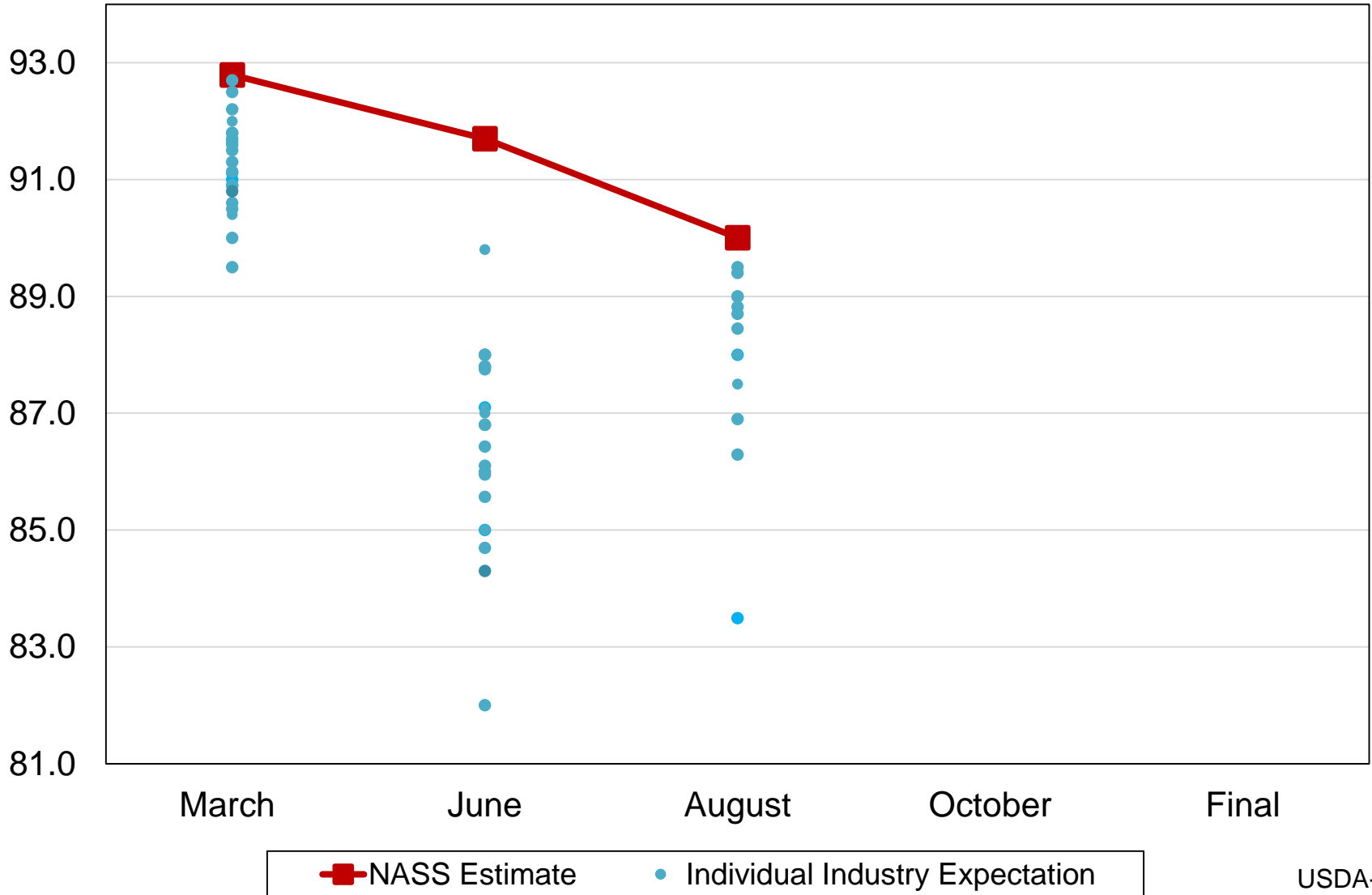


U.S. 90,005
 -1,695
 # Record High
 & Record Low
 NC = No Change



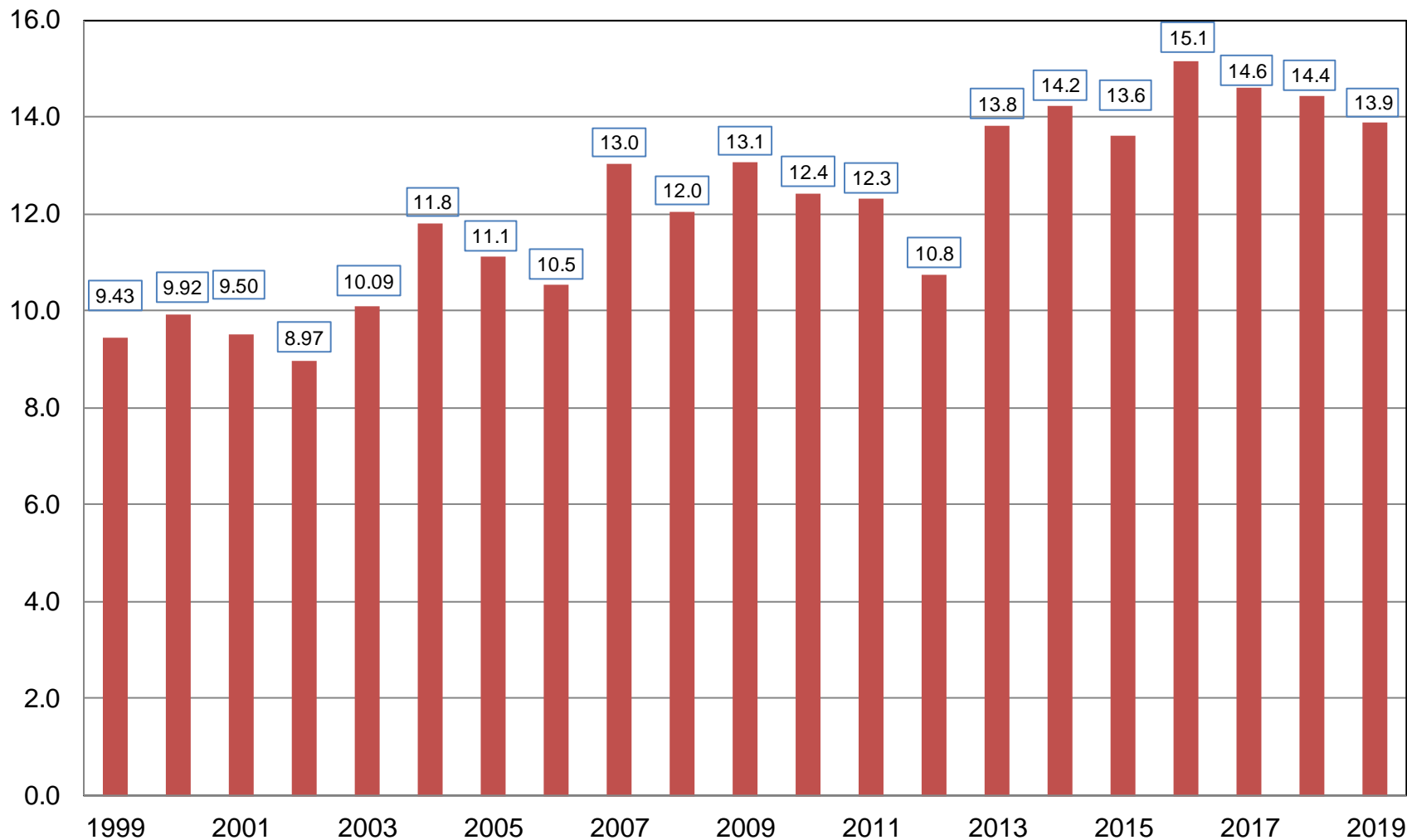
2019 United States Corn Acres Industry Expectations vs NASS

Million Acres



Corn for Grain Production United States

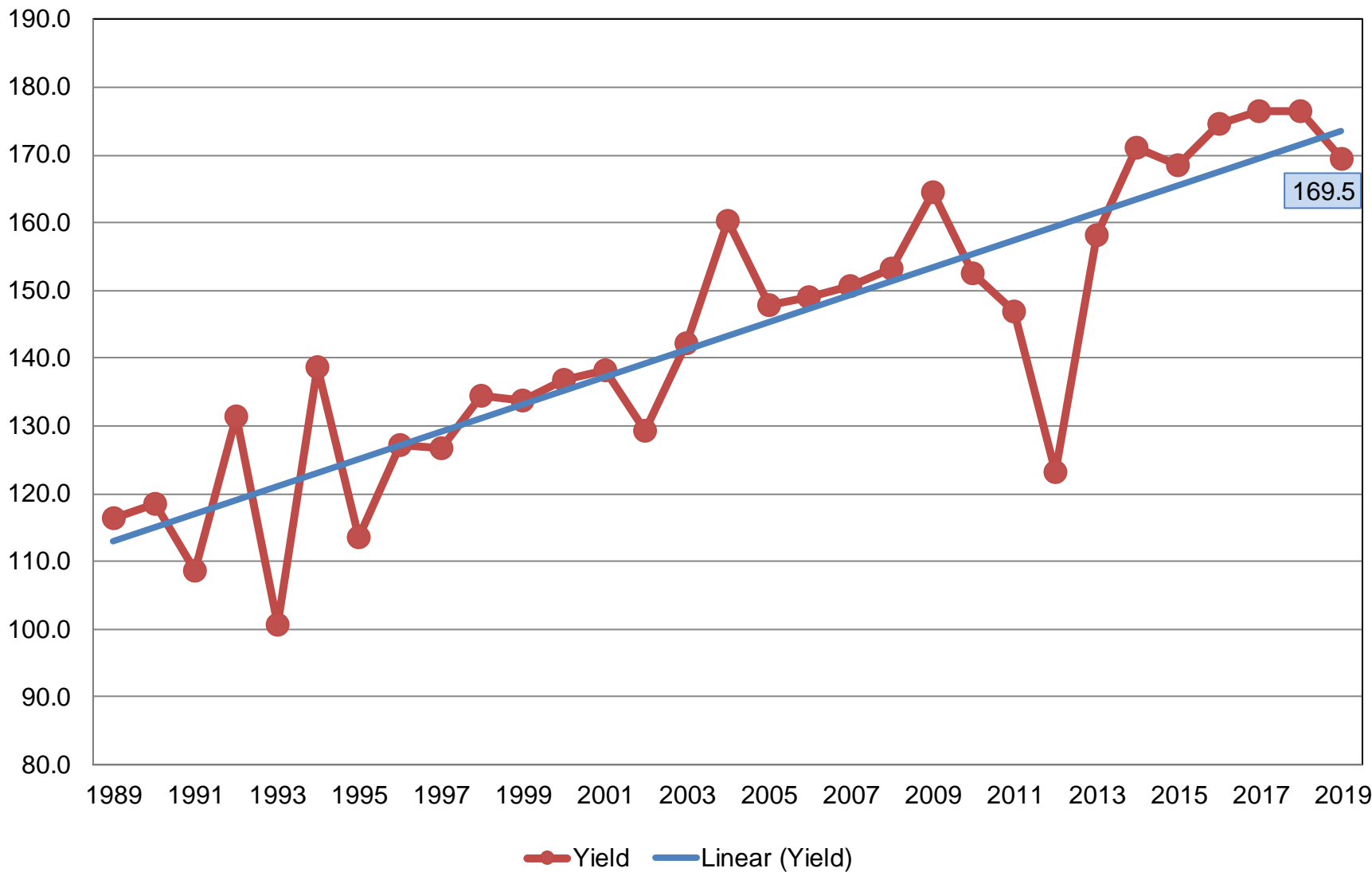
Billion Bushels



Corn for Grain Yield

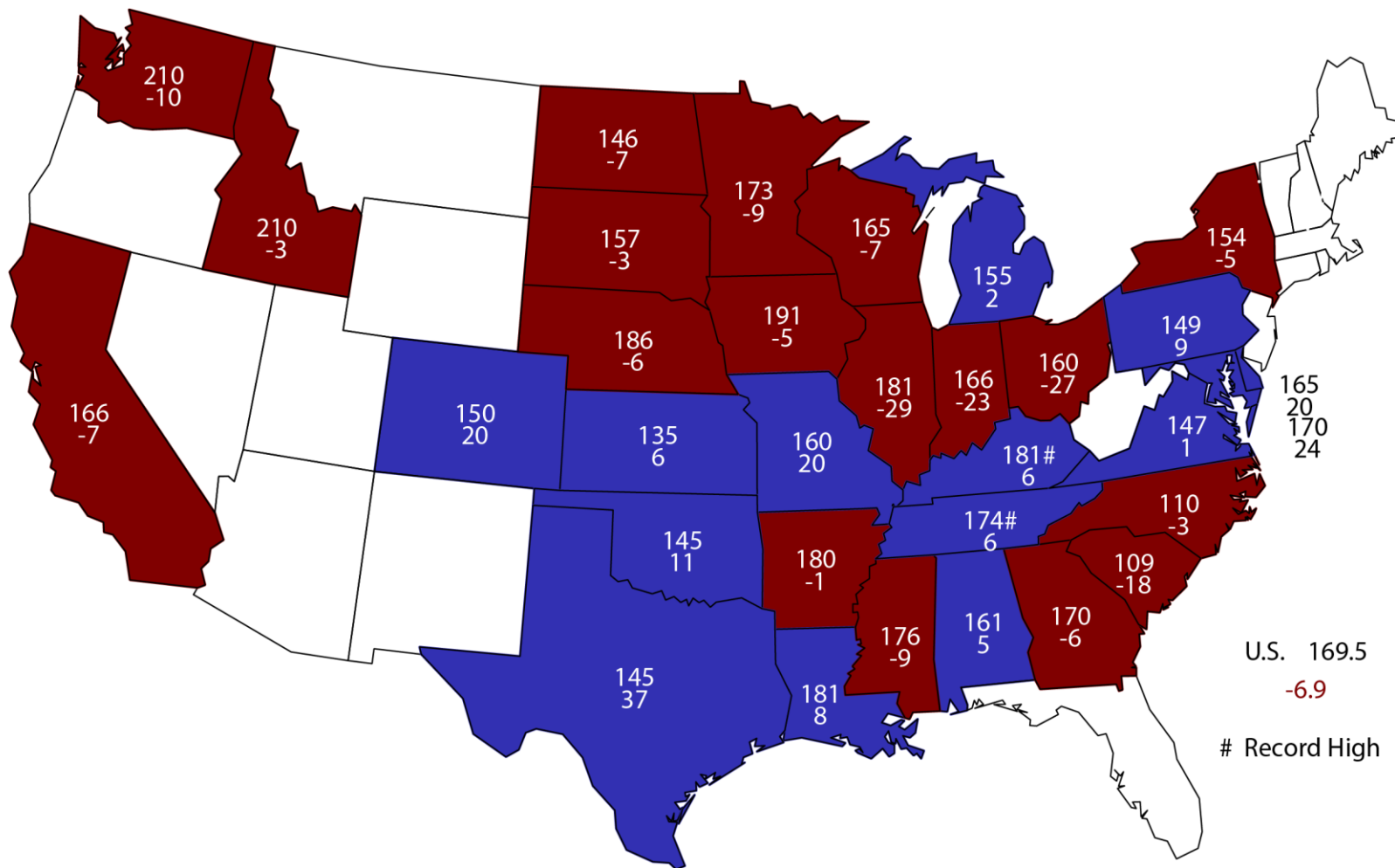
United States

Bushels per Acre



August 1, 2019 Corn Yield

Bushels and Change From Previous Year

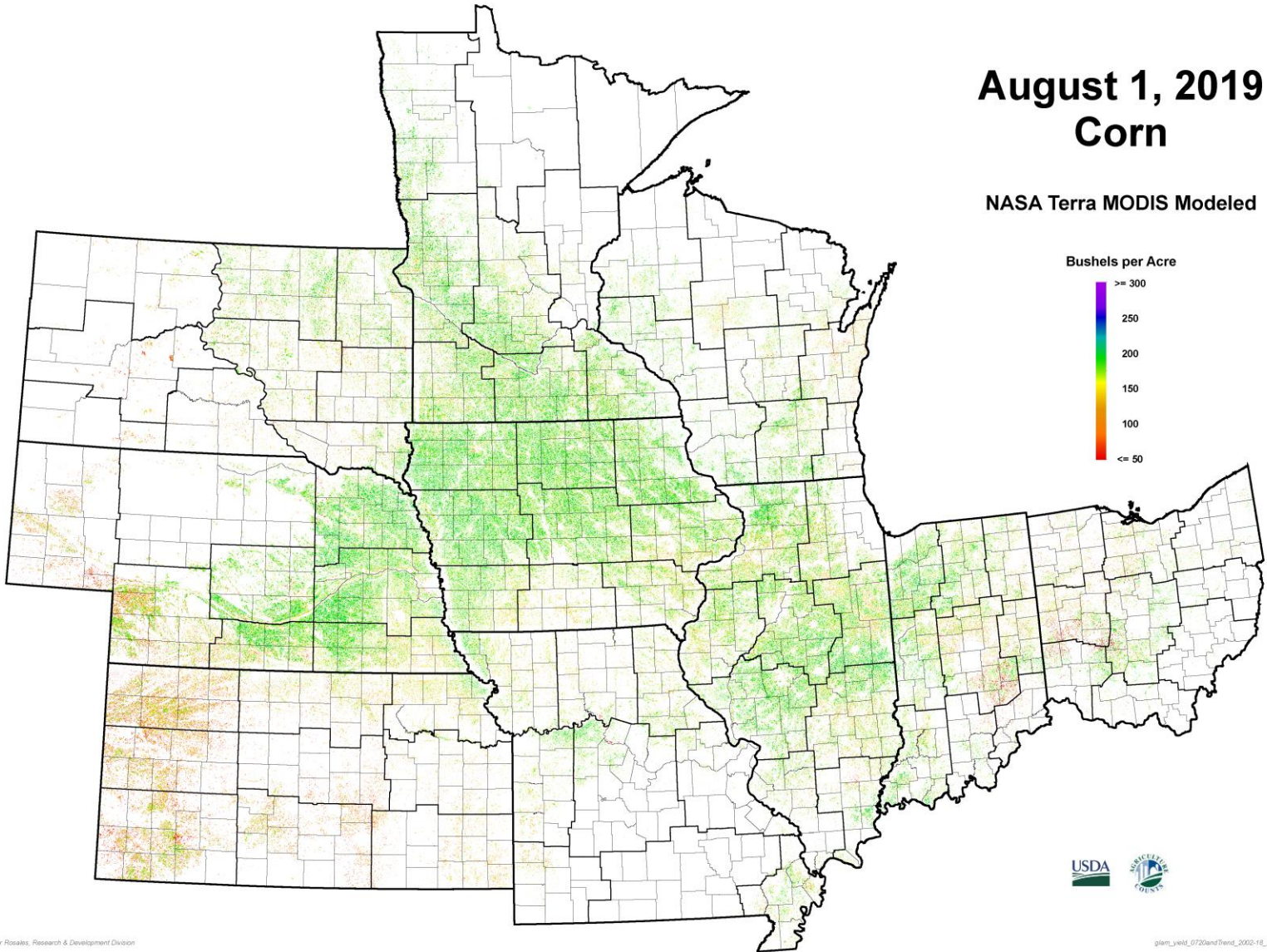


U.S. 169.5
-6.9

Record High

August 1, 2019 Corn

NASA Terra MODIS Modeled

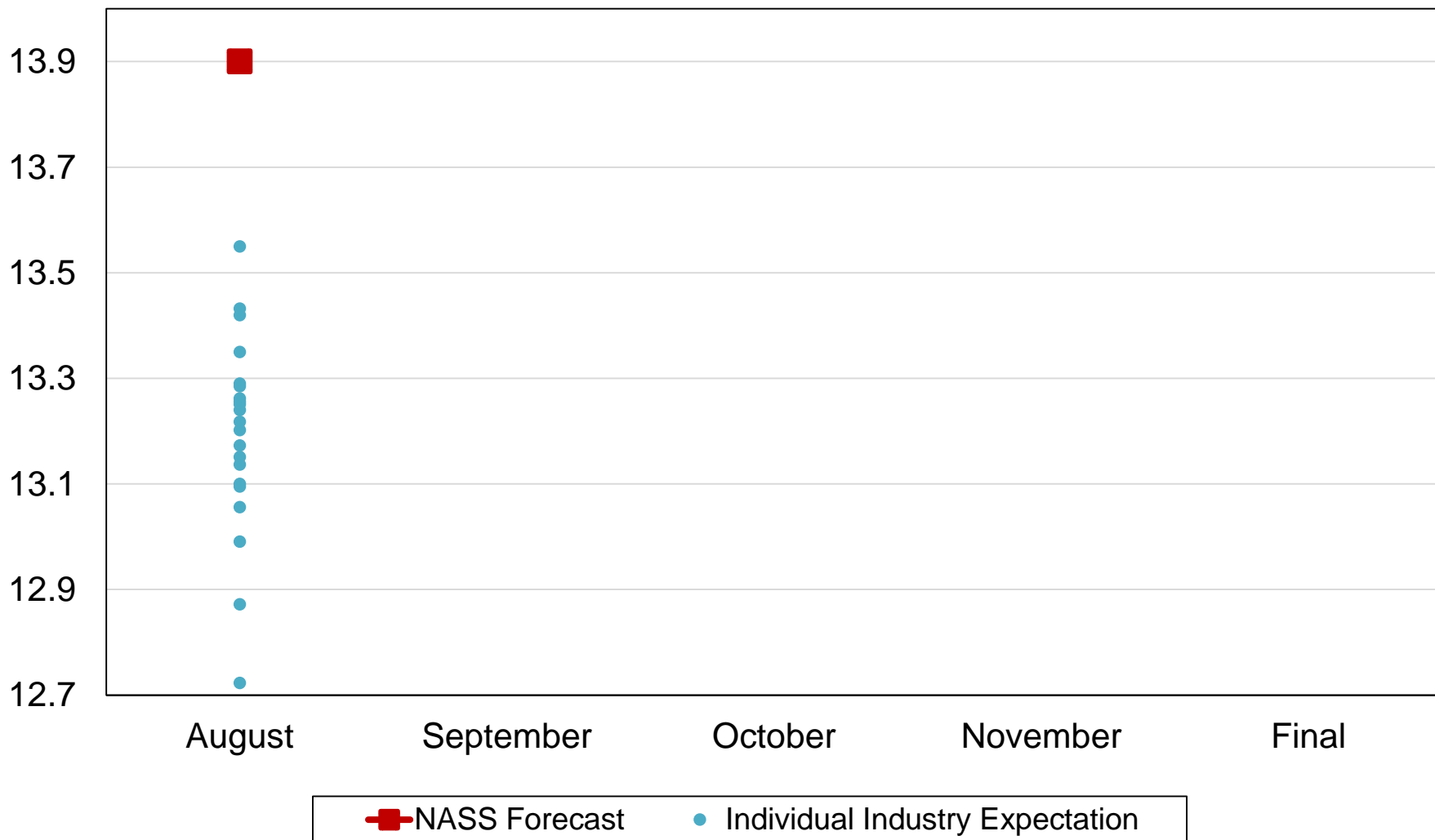




Billion Bushels



2019 United States Corn Production Industry Expectations vs NASS





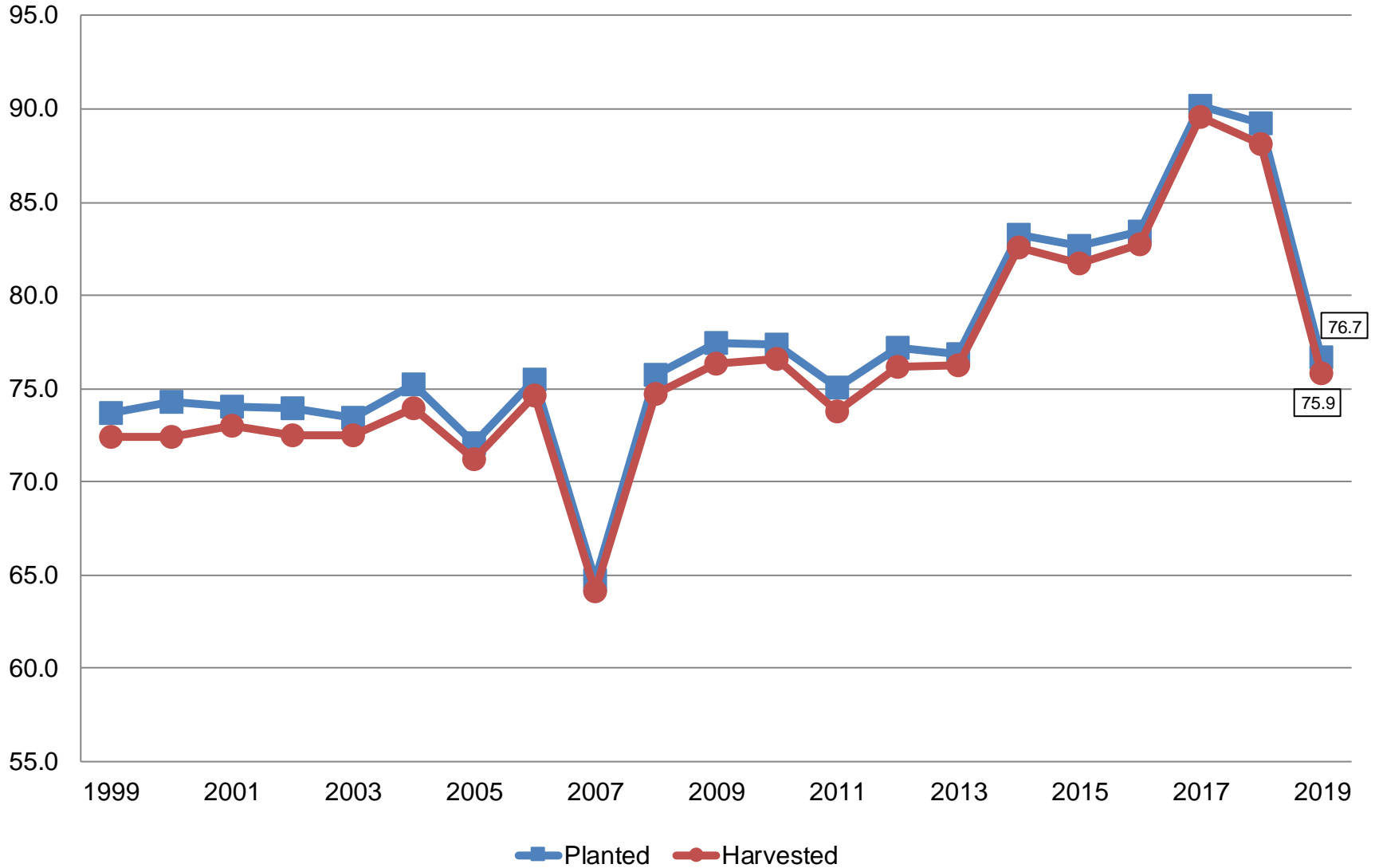
August 2019 Crop Production

Crop	Unit	August 2019	% Change From Previous Forecast	% Change From Previous Season
Soybeans				
Planted	Mil Ac	76.7	-4.2	-14.0
Harvested	Mil Ac	75.9	-4.3	-13.9
Yield	Bu/Ac	48.5	NA	-6.0
Production	Bil Bu	3.68	NA	-19.0



Soybean Acres United States

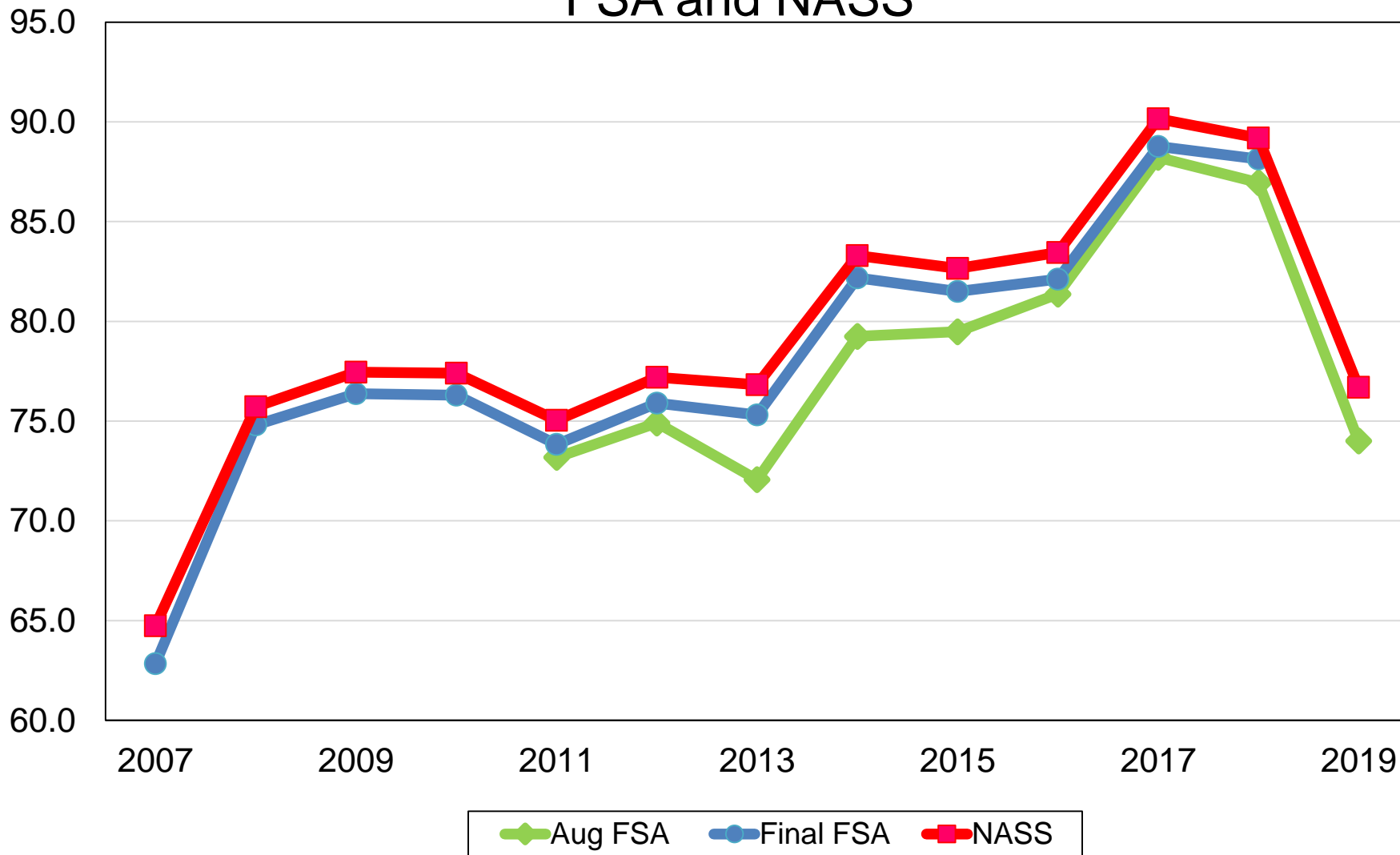
Million Acres





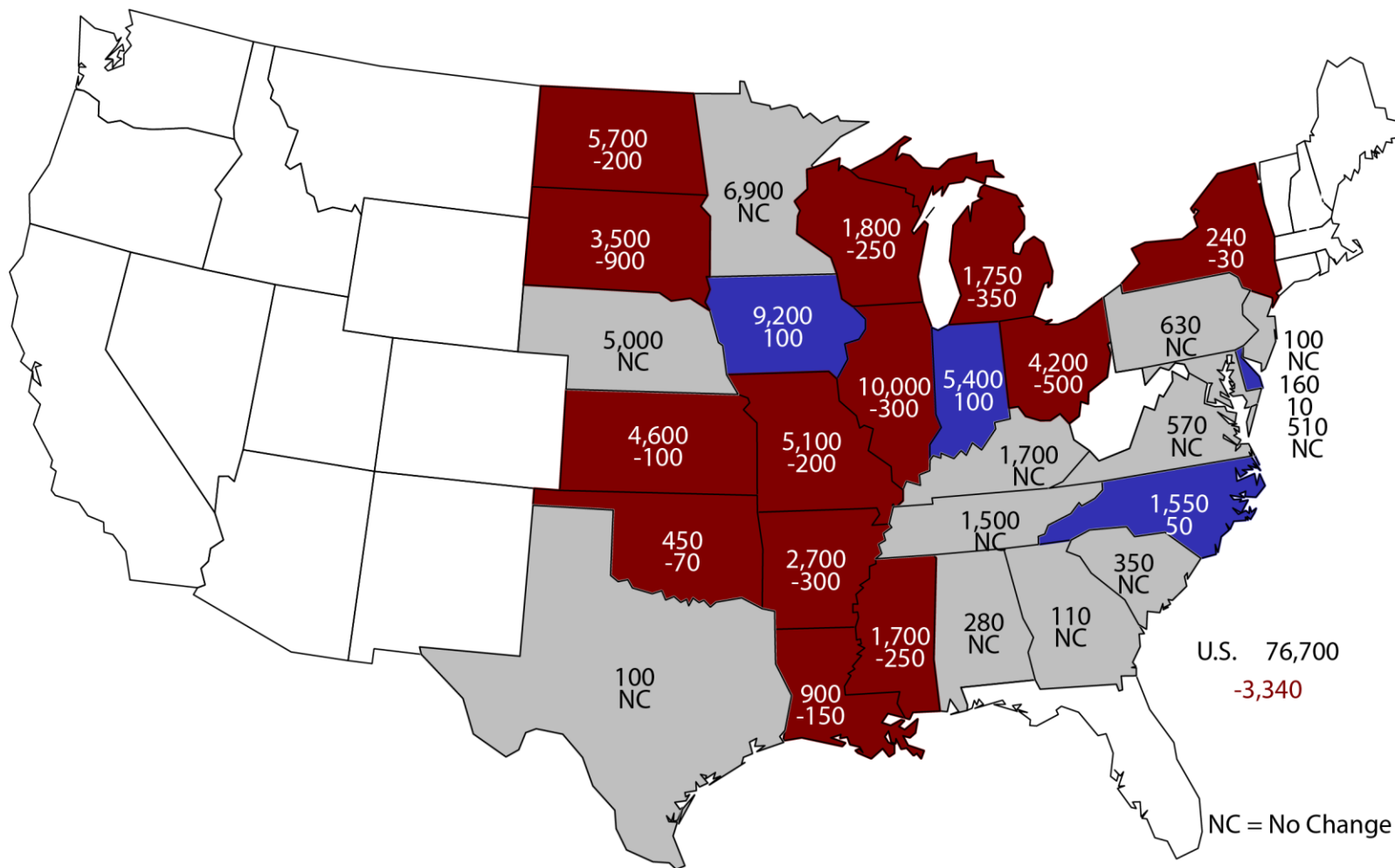
United States Soybeans Planted Acres FSA and NASS

Million Acres



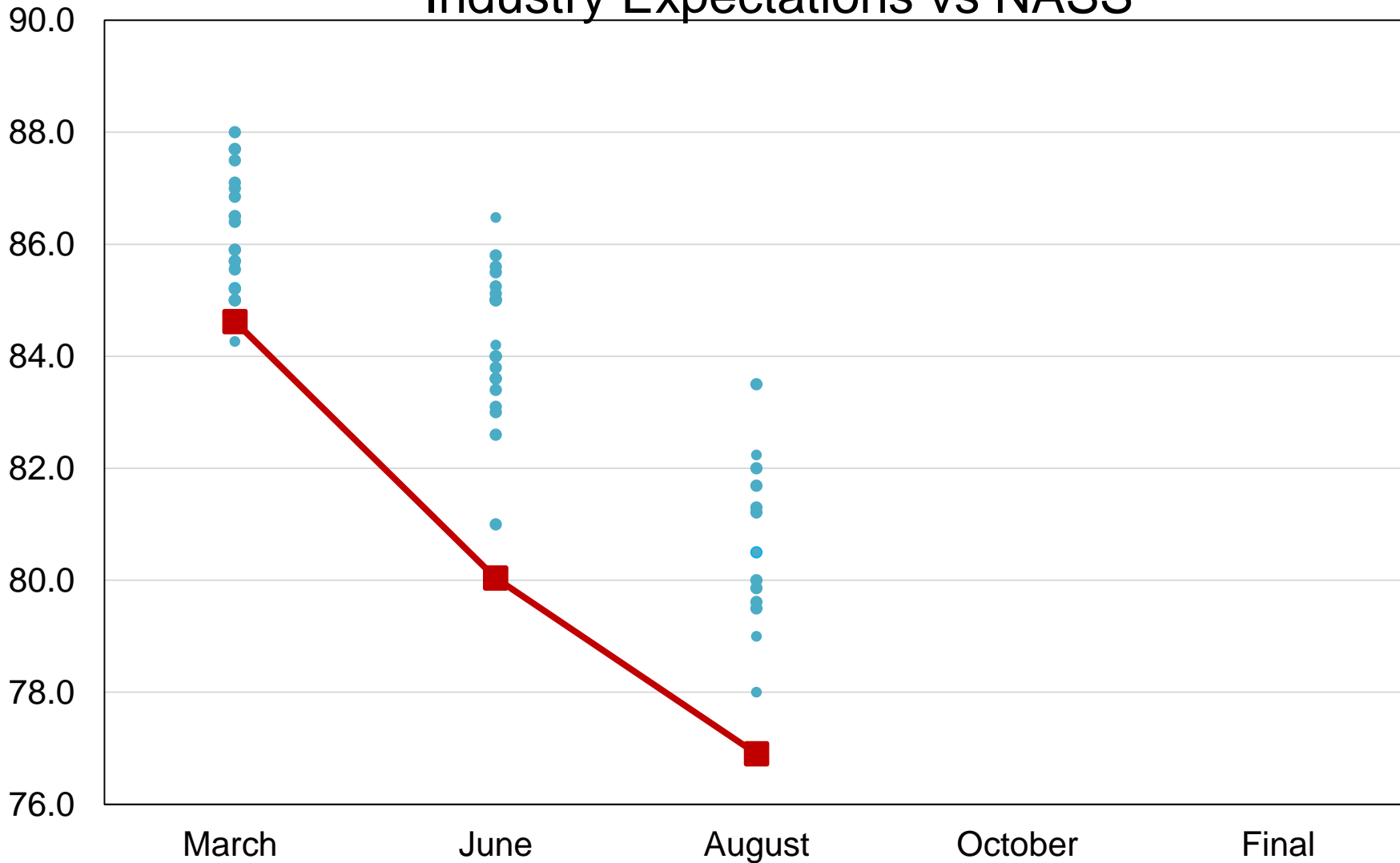
2019 Soybean Planted Area

(000) Acres and Change From Previous Estimate



2019 United States Soybean Acres Industry Expectations vs NASS

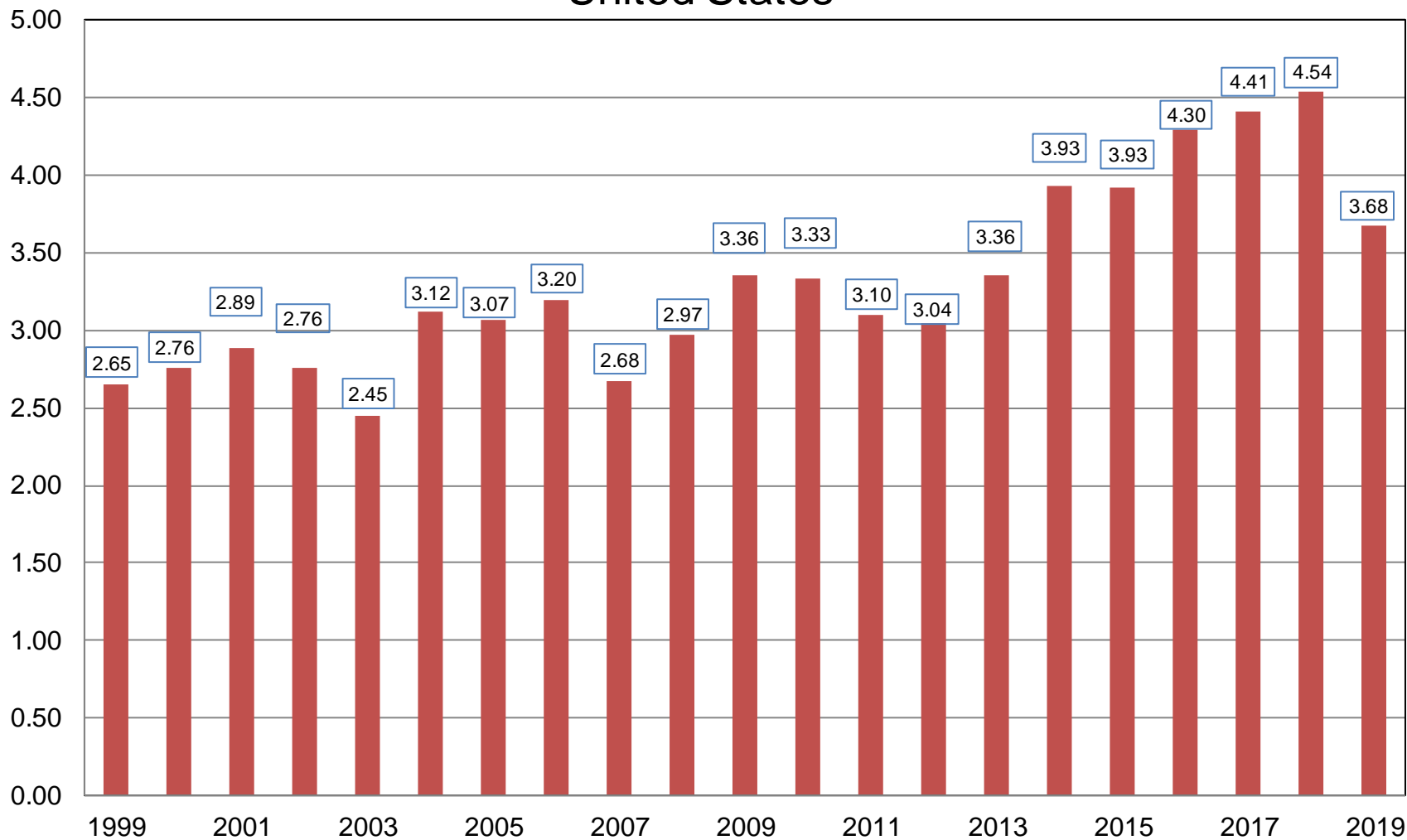
Million Acres



■ NASS Estimate
 ● Individual Industry Expectation

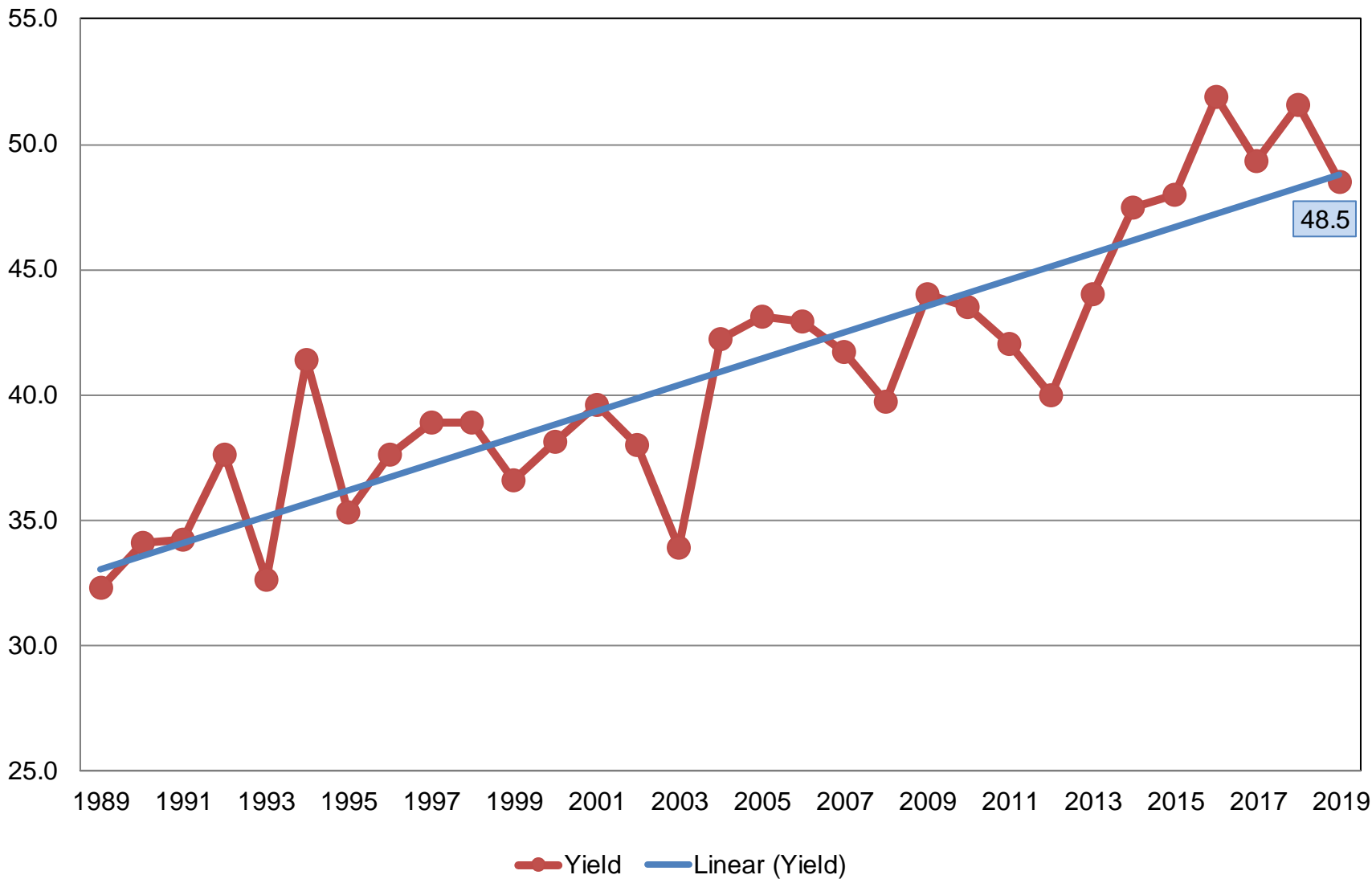
Soybean Production United States

Billion Bushels



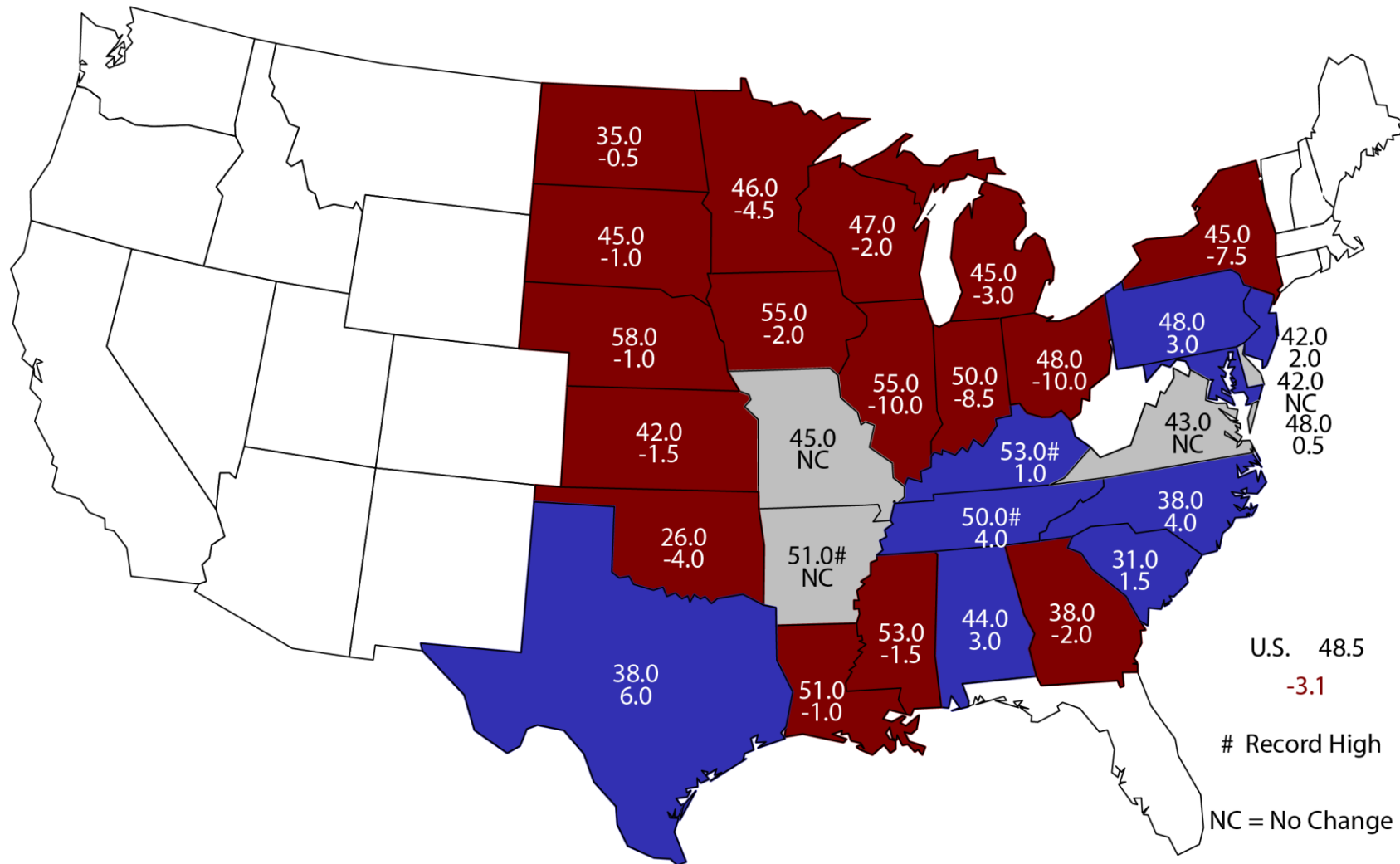
Soybean Yield United States

Bushels per Acre



August 1, 2019 Soybean Yield

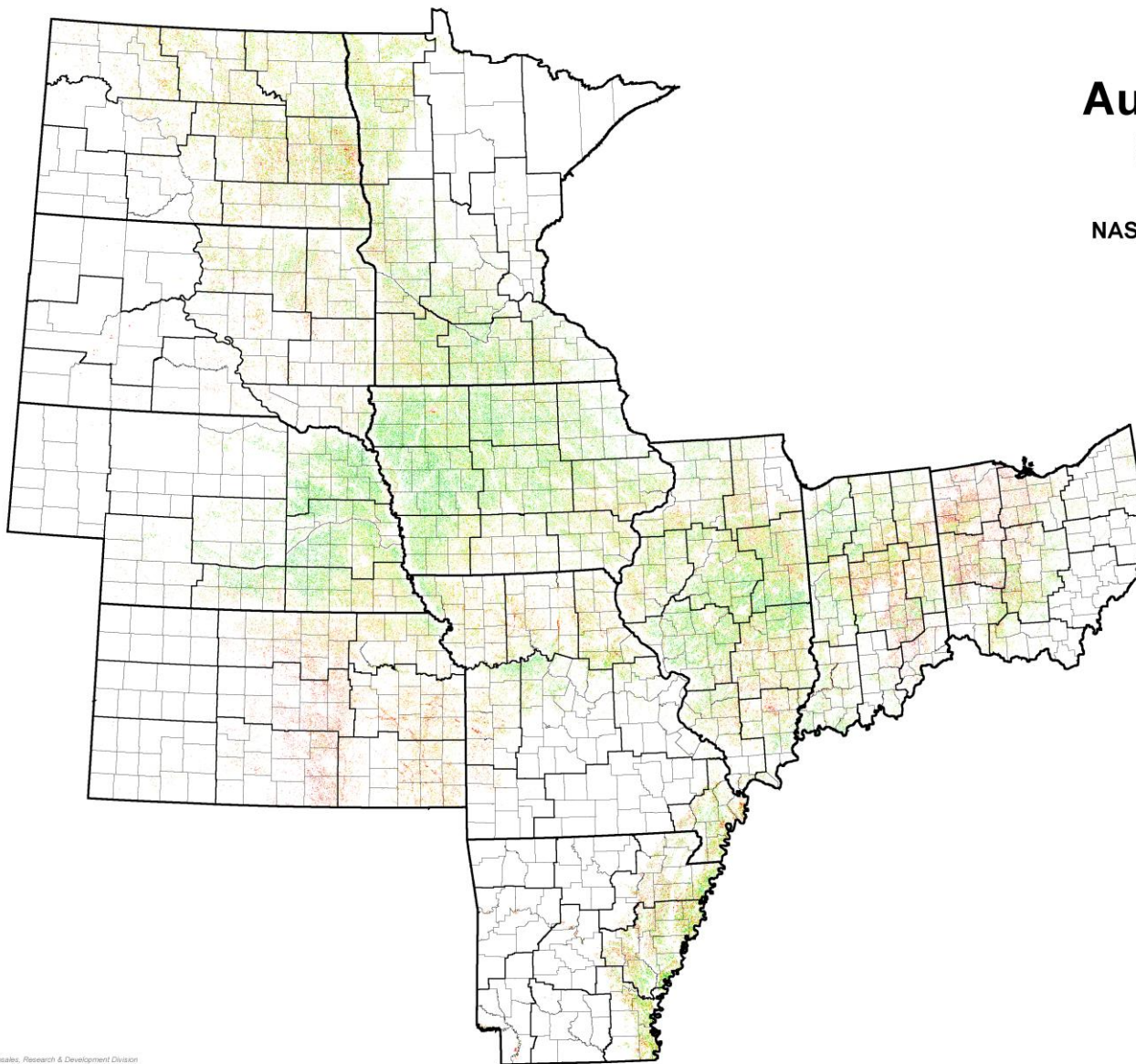
Bushels and Change From Previous Year



U.S. 48.5
-3.1

Record High

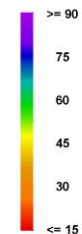
NC = No Change



August 1, 2019 Soybeans

NASA Terra MODIS Modeled

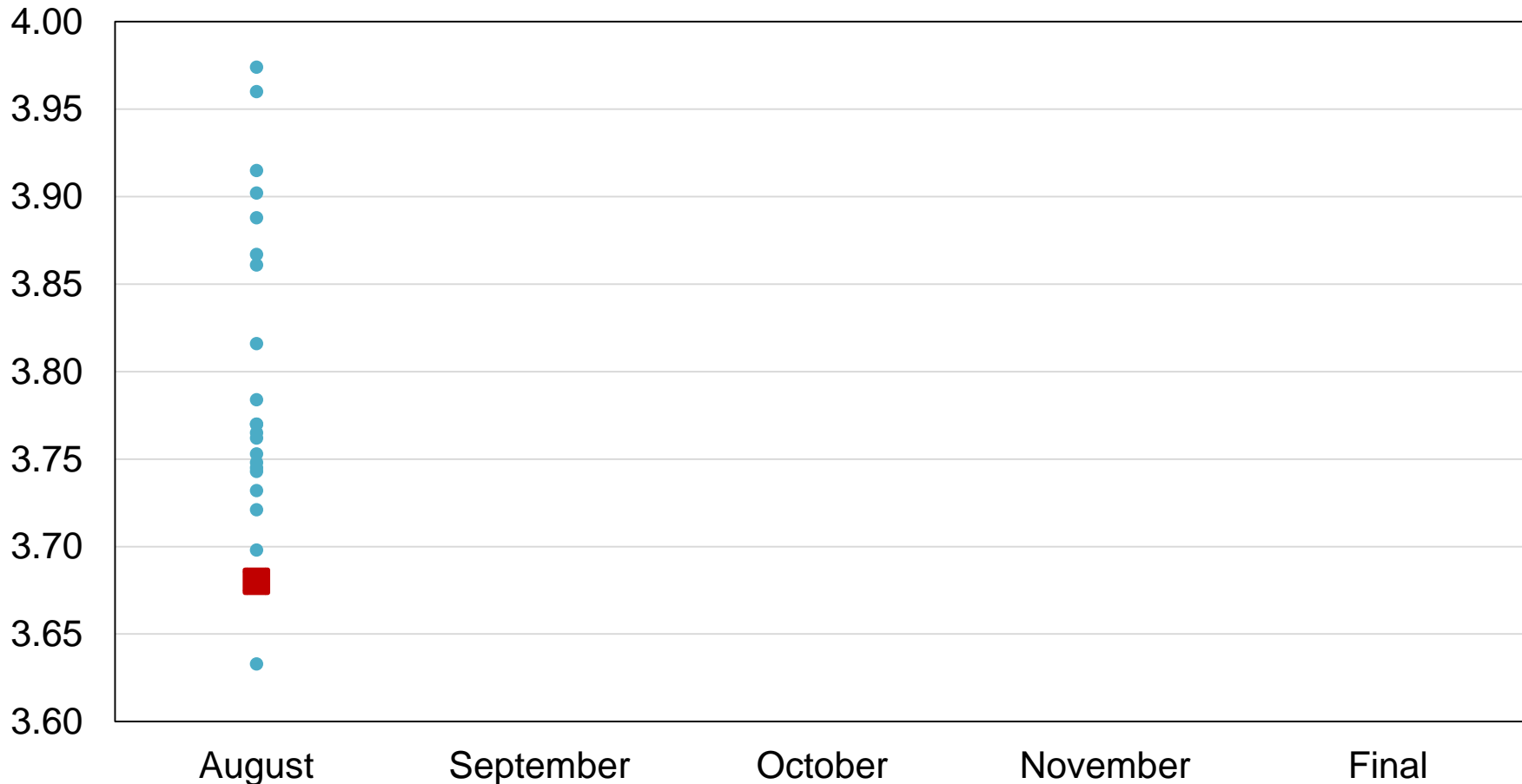
Bushels per Acre





2019 United States Soybean Production Industry Expectations vs NASS

Billion Bushels



■ NASS Forecast ● Individual Industry Expectation



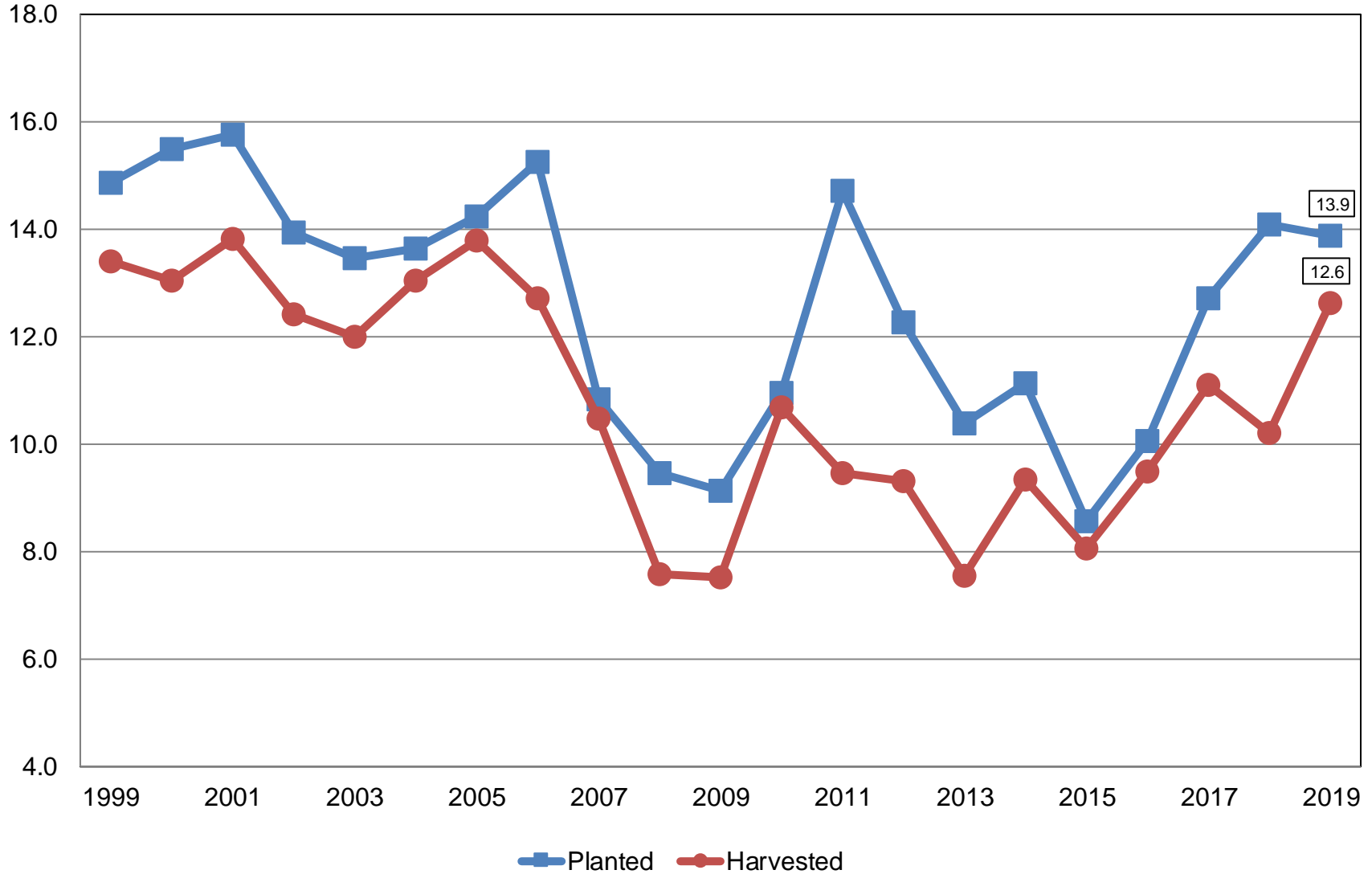
August 2019 Crop Production

Crop	Unit	August 2019	% Change From Previous Forecast	% Change From Previous Season
All Cotton				
Planted	Mil Ac	13.9	+1.3	-1.4
Harvested	Mil Ac	12.6	NA	+23.8
Yield	Lb/Ac	855	NA	-1.0
Production	Mil Bls	22.5	NA	+22.6



All Cotton Acres United States

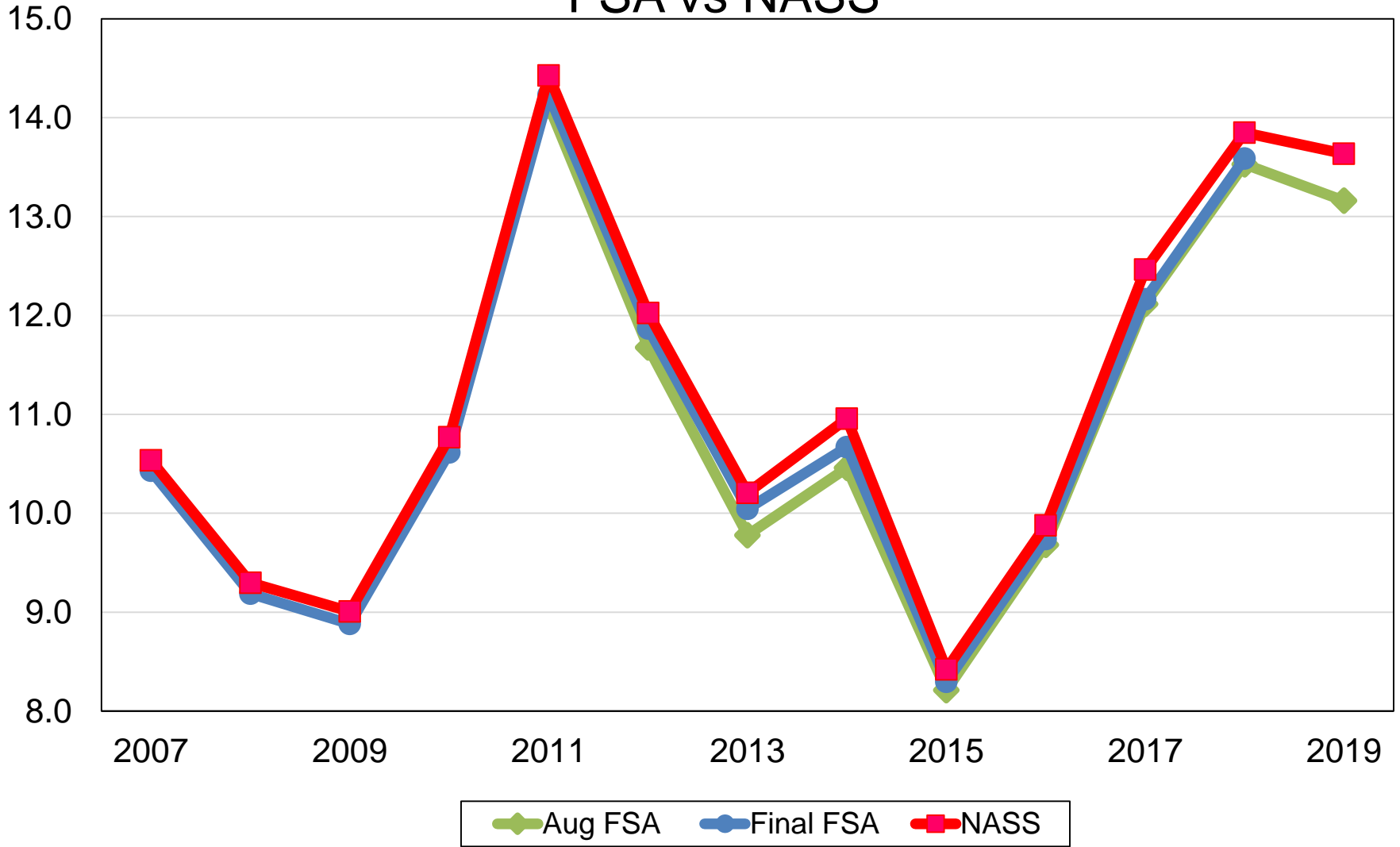
Million Acres





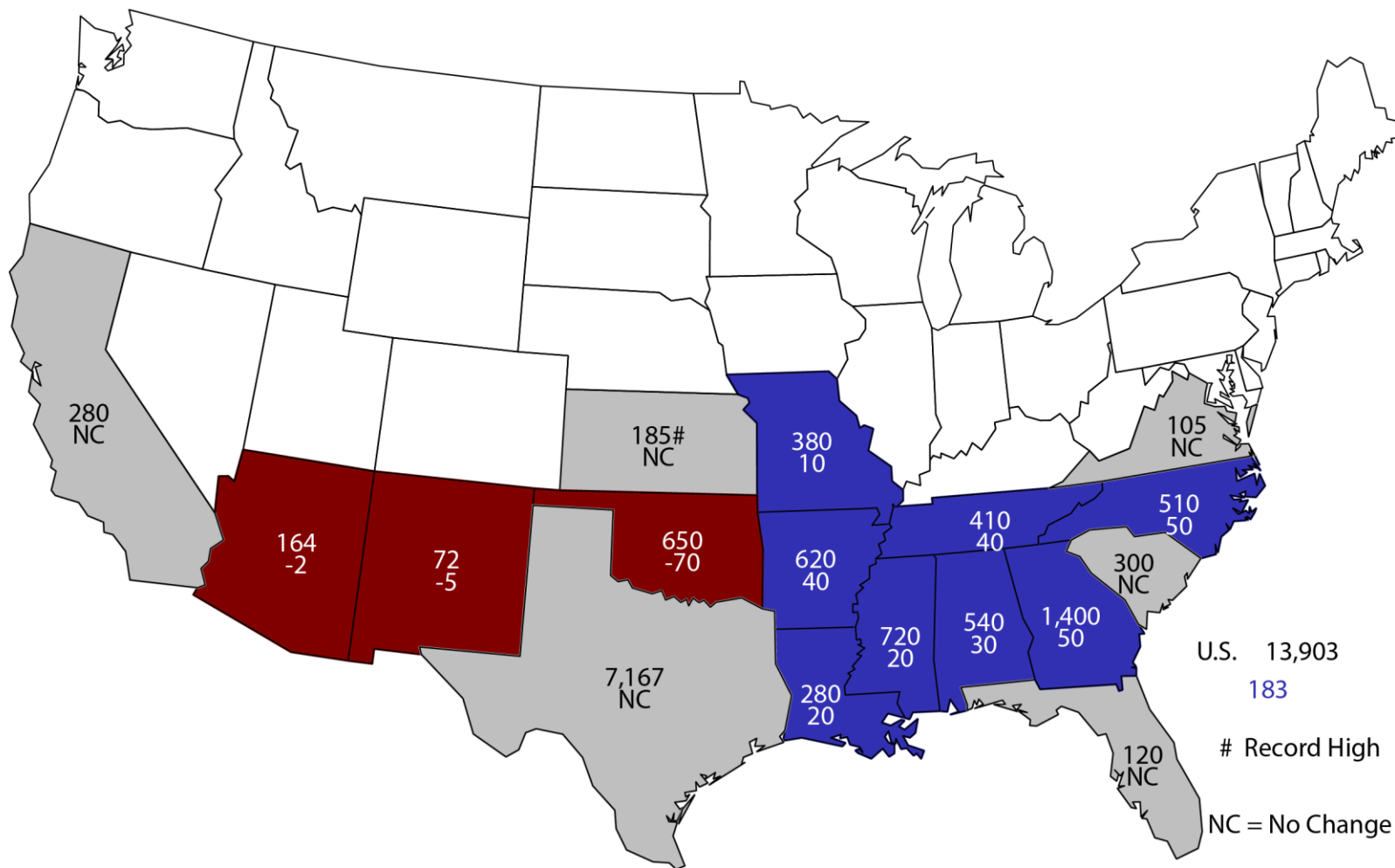
United States Upland Cotton Planted Acres FSA vs NASS

Million Acres



2019 All Cotton Planted Area

Acres (000) and Change From Previous Estimate

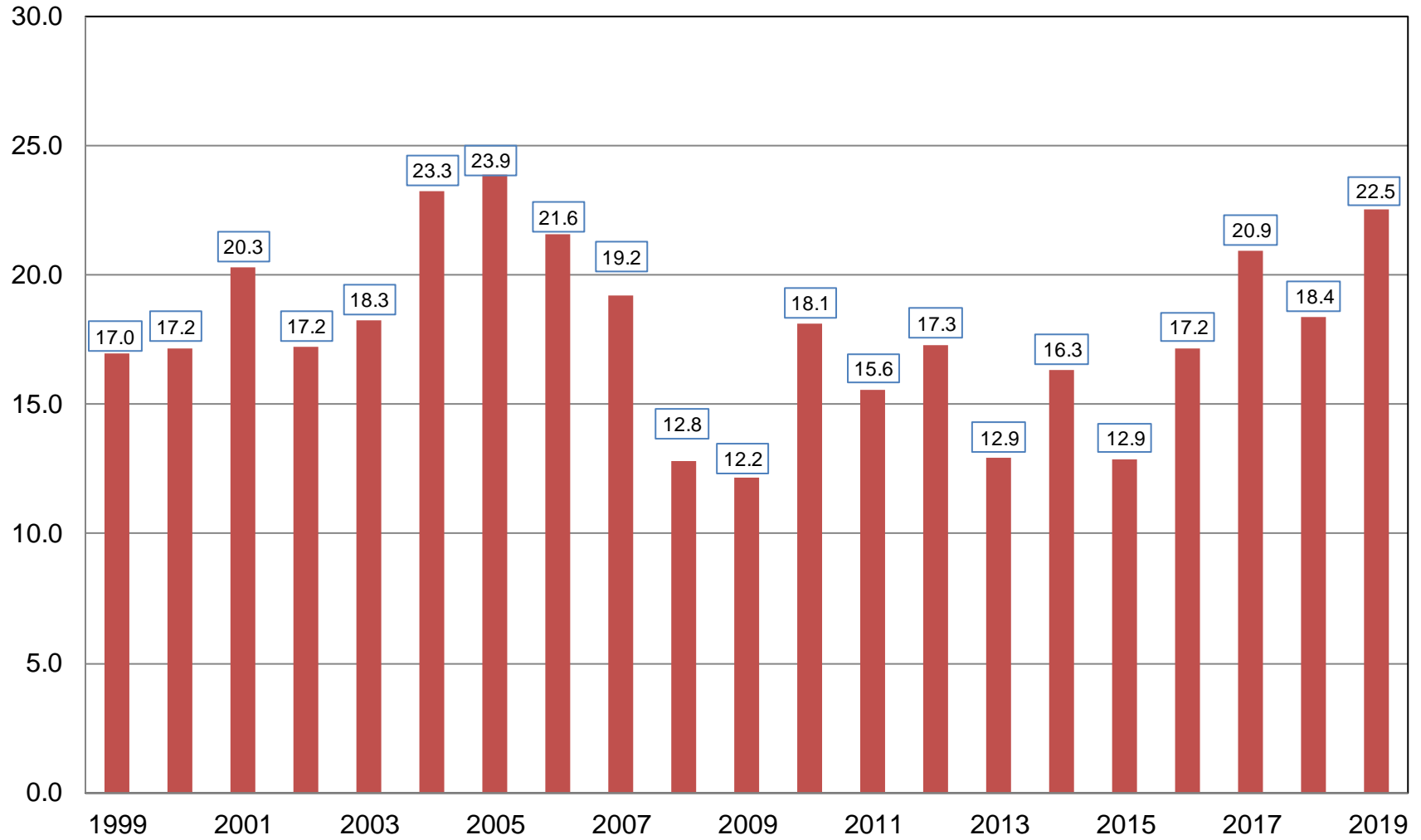


U.S. 13,903
 183
 # Record High
 NC = No Change



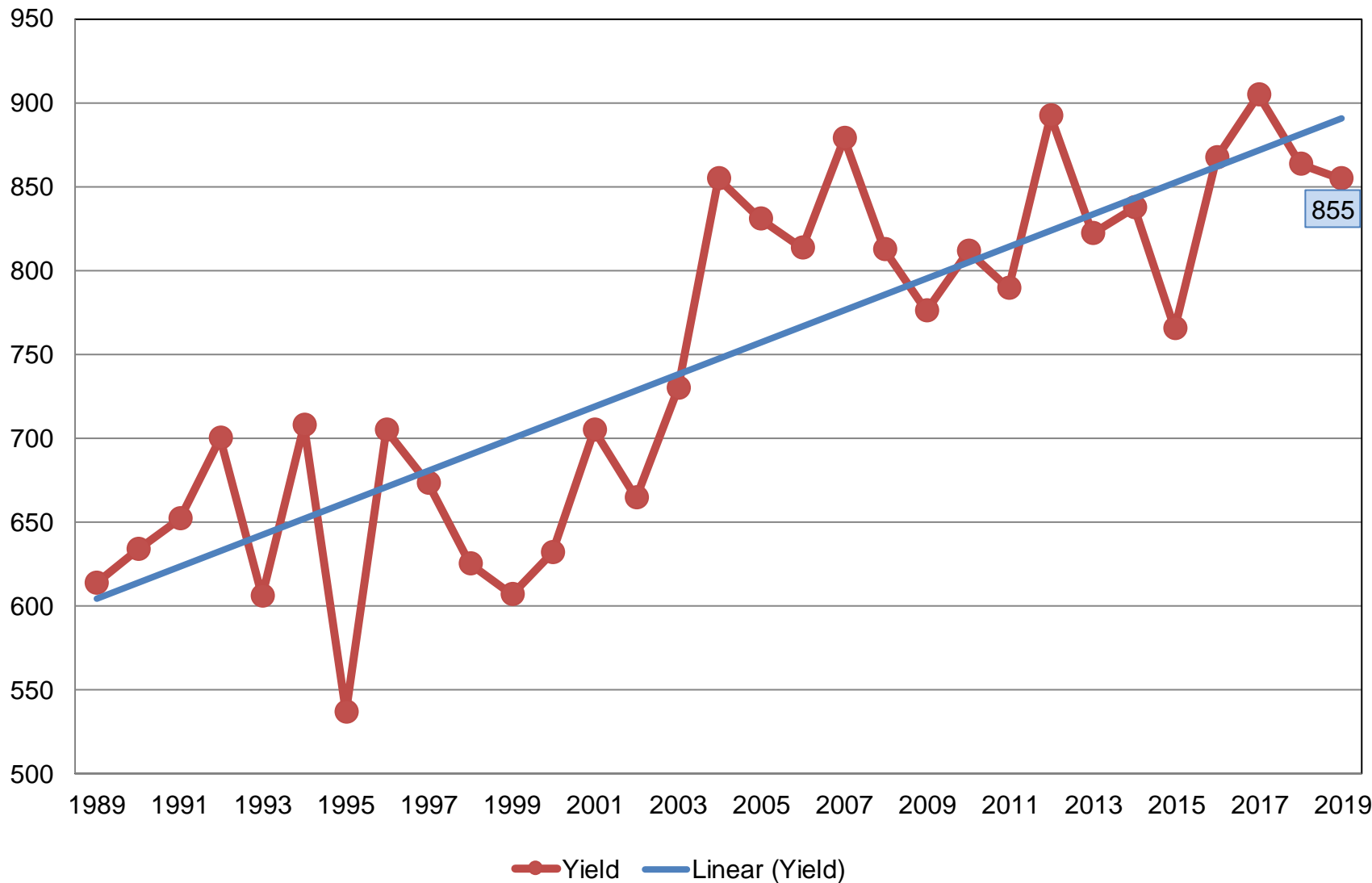
All Cotton Production United States

Million Bales



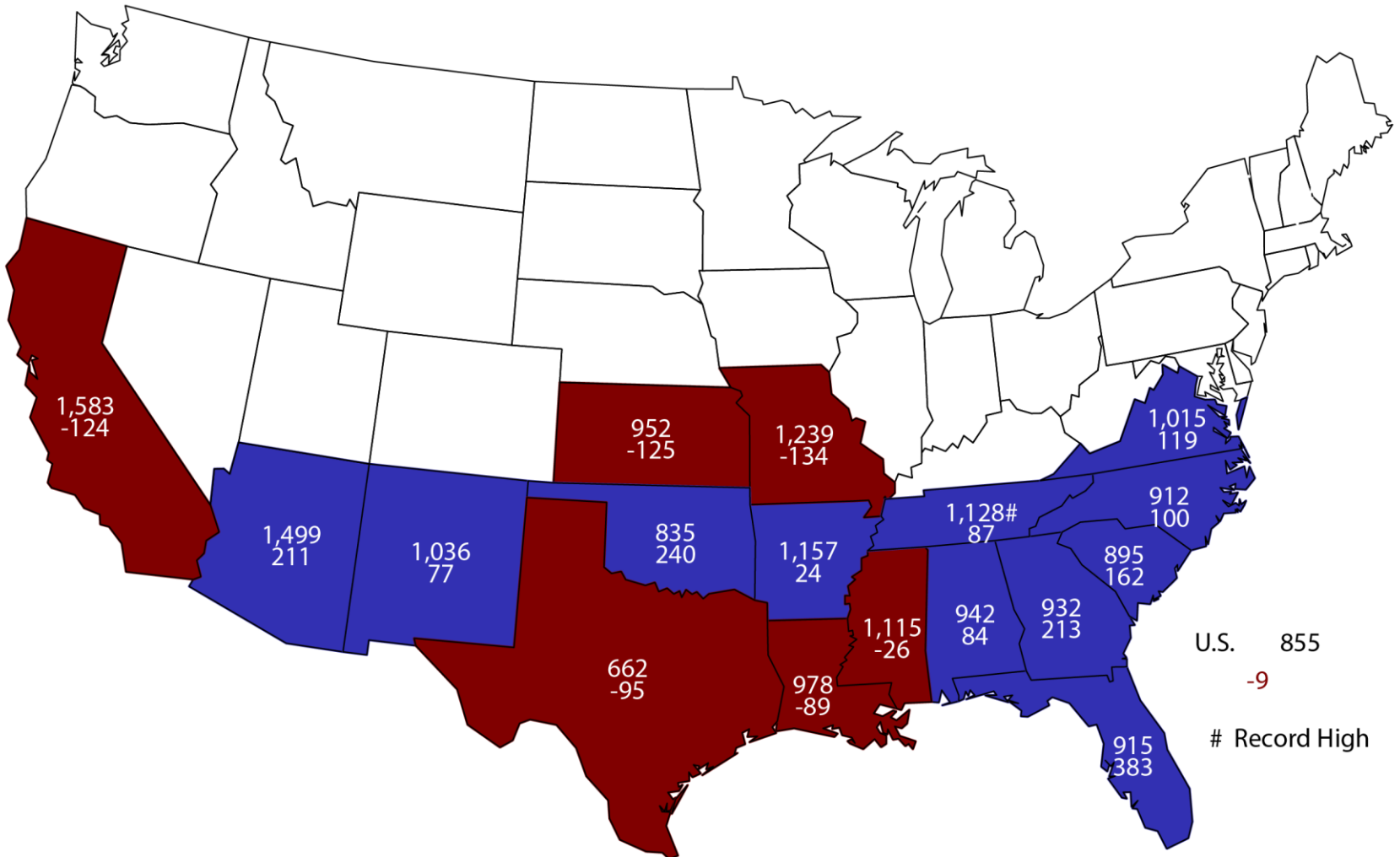
All Cotton Yield United States

Pounds per Acre



August 1, 2019 All Cotton Yield

Pounds and Change From Previous Year



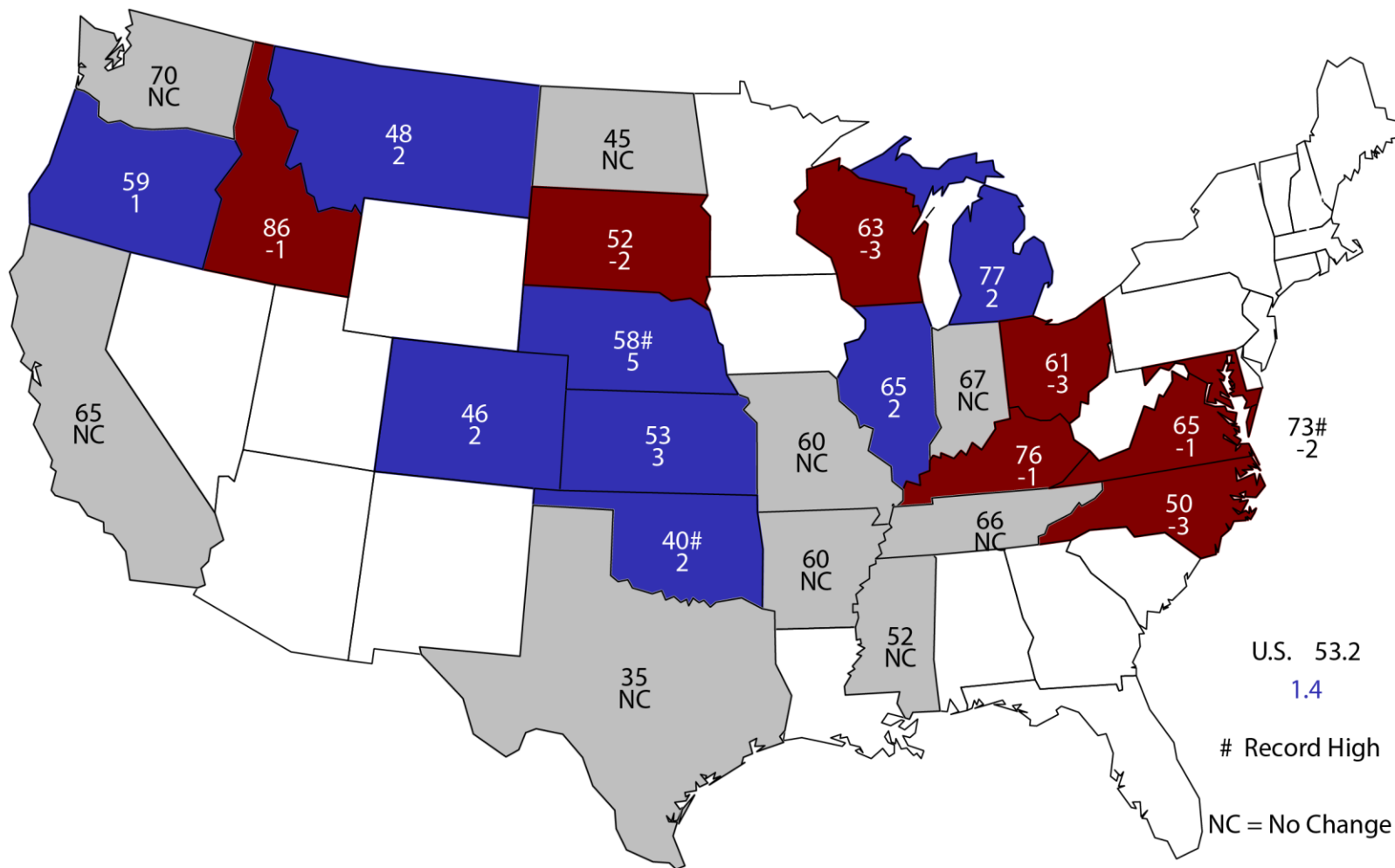


August 2019 Crop Production

Crop	Unit	August 2019	% Change From Previous Forecast	% Change From Previous Season
Winter Wheat				
Harvested	Mil Ac	24.9	NC	+0.7
Yield	Bu/Ac	53.2	+2.7	+11.1
Production	Bil Bu	1.33	+2.8	+12.0
Other Spring Wheat				
Harvested	Mil Ac	12.1	NC	-6.0
Yield	Bu/Ac	49.2	+4.2	+1.9
Production	Mil Bu	597	+4.3	-4.3
Durum Wheat				
Harvested	Mil Ac	1.36	NC	-31.1
Yield	Bu/Ac	42.3	-1.4	+7.6
Production	Mil Bu	57.3	-1.4	-25.8
All Wheat				
Production	Bil Bu	1.98	+3.1	+5.1

August 1, 2019 Winter Wheat Yield

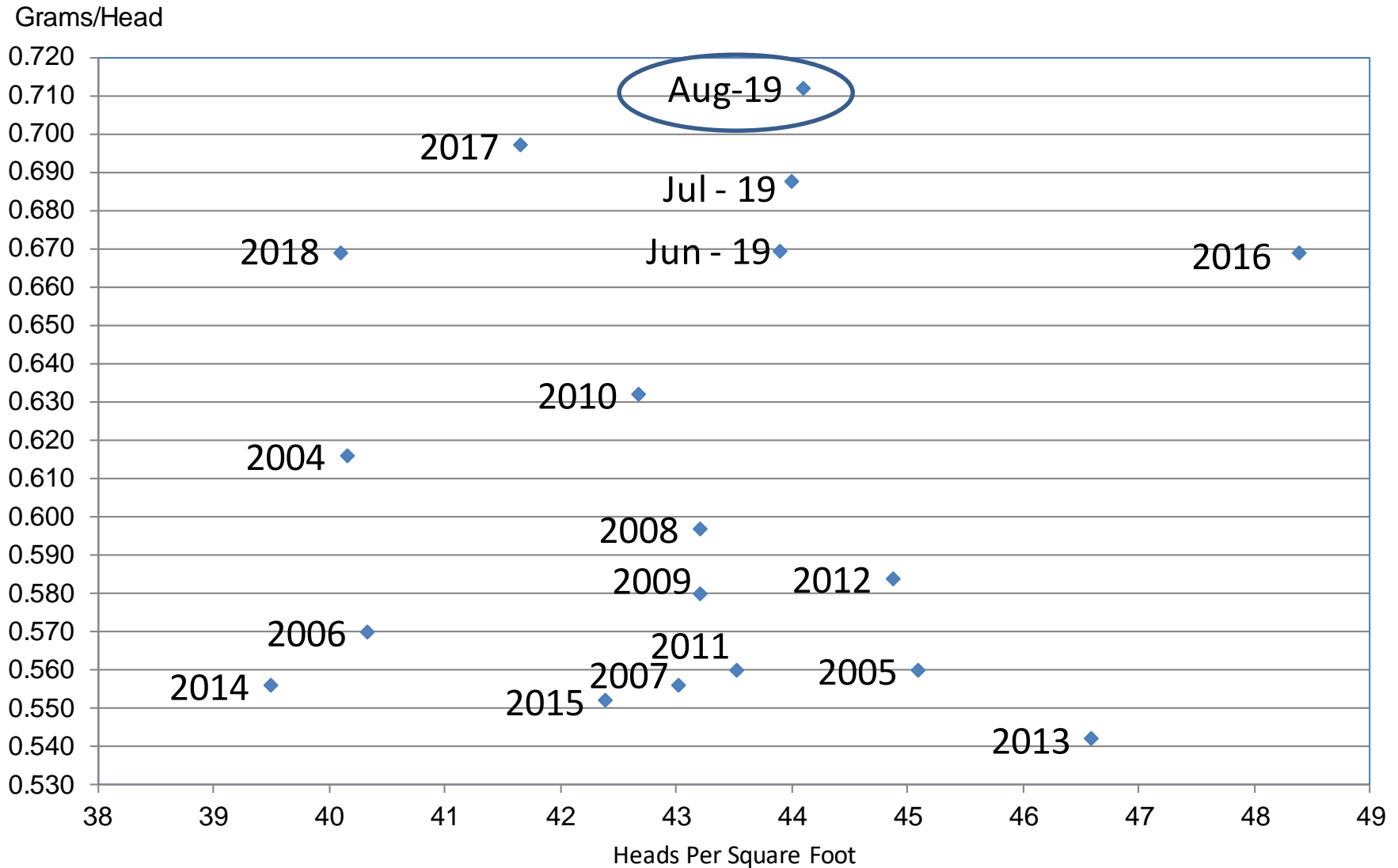
Bushels and Change From Previous Estimate





Wheat Objective Yield Region

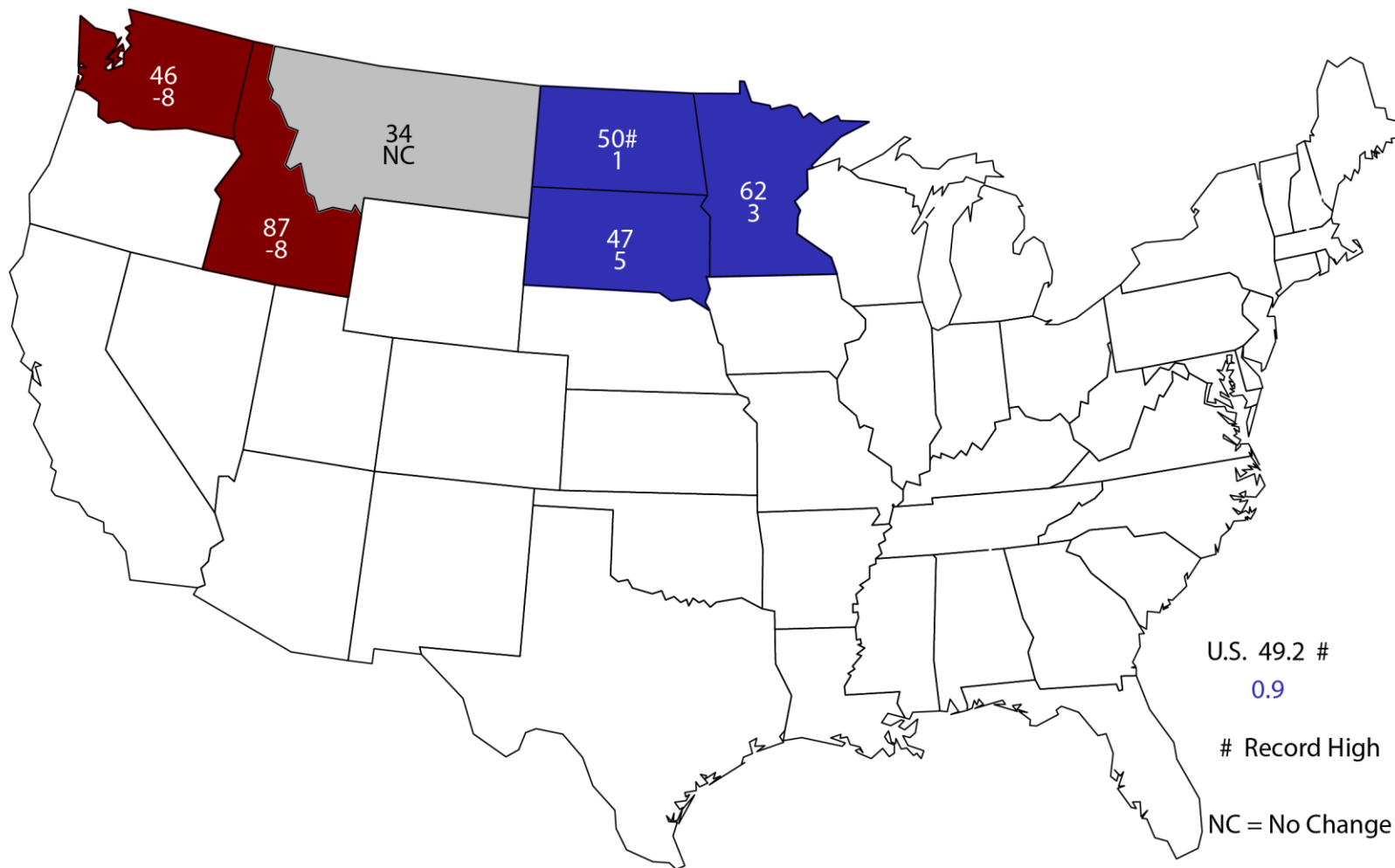
Heads Per Square Foot vs. Implied Head Weight



Implied Head Weight = Published Yield / (Heads*1.6006)

August 1, 2019 Other Spring Wheat Yield

Bushels and Change From Previous Year



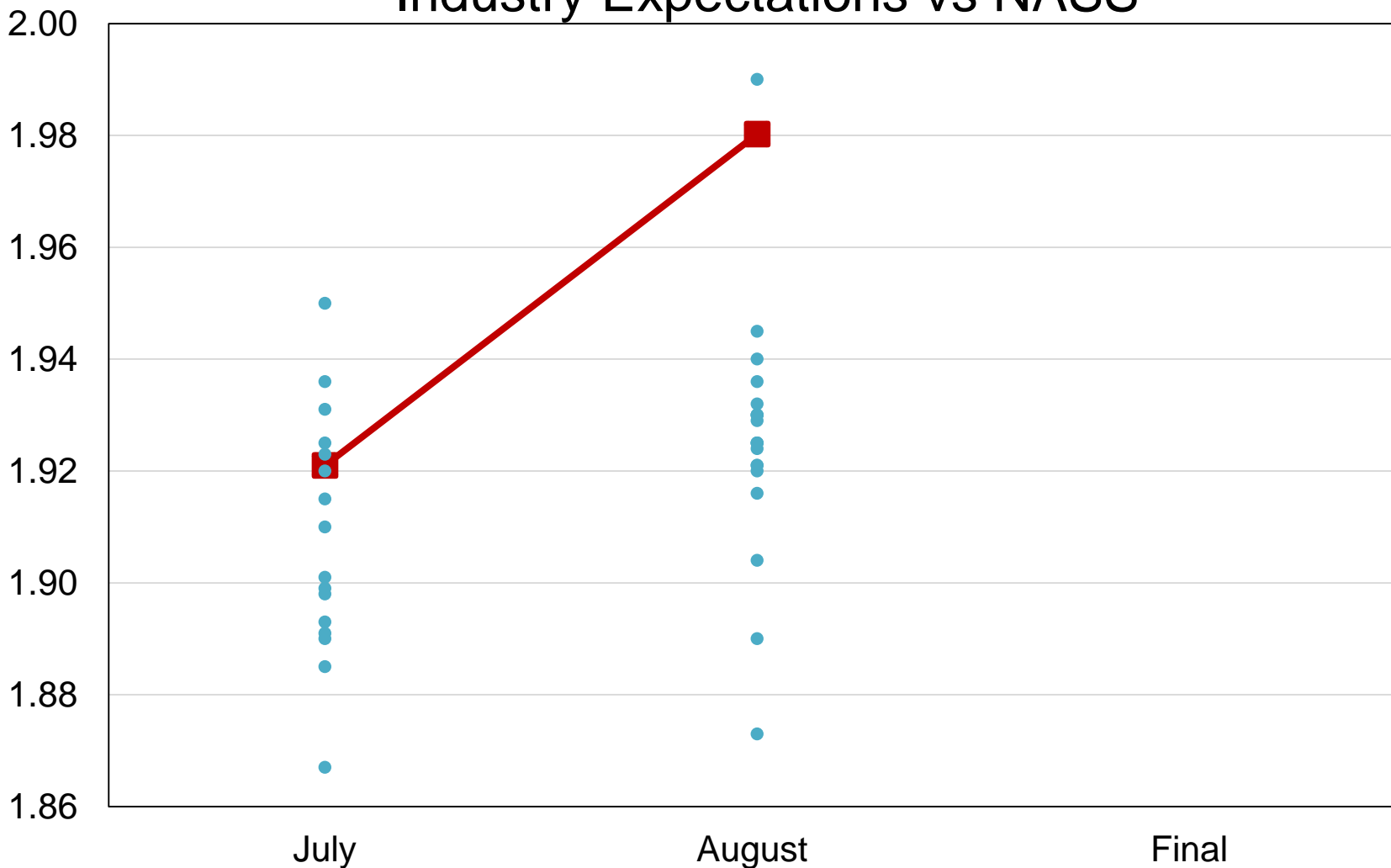
U.S. 49.2 #
0.9

Record High

NC = No Change

2019 United States All Wheat Production Industry Expectations vs NASS

Billion Bushels

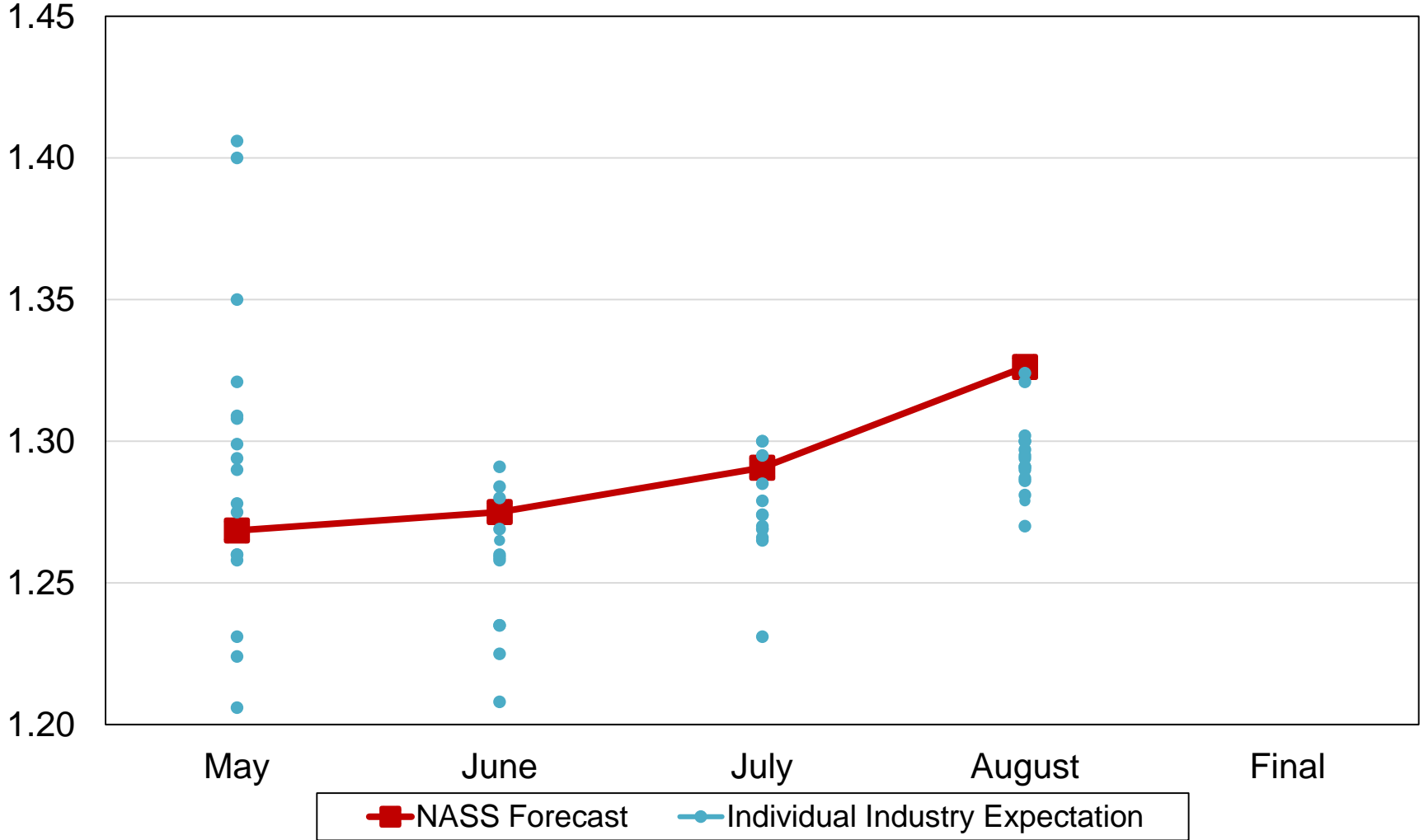


■ NASS Forecast
 ● Individual Industry Expectation



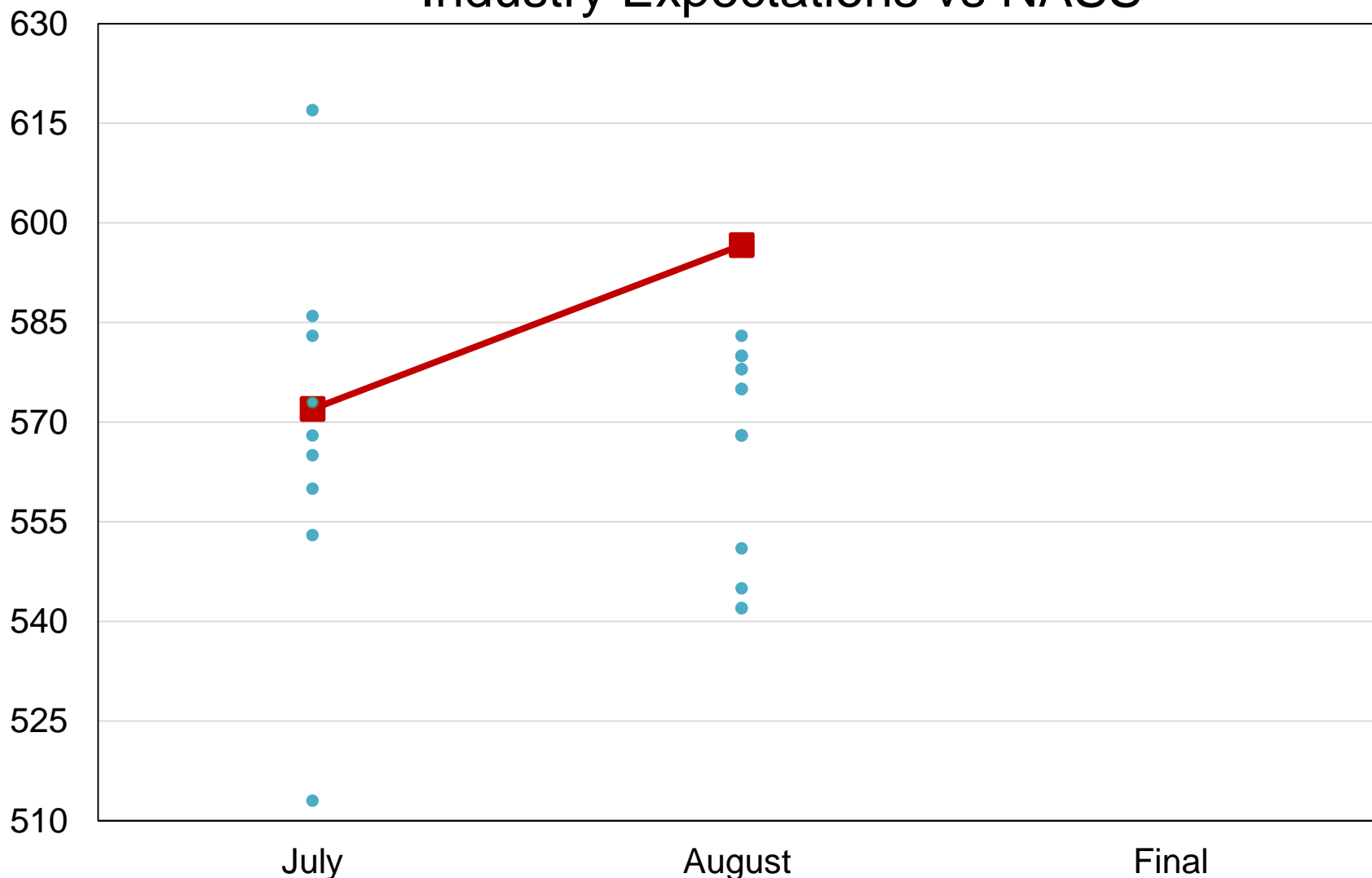
2019 United States Winter Wheat Production Industry Expectations vs NASS

Billion Bushels



2019 United States Other Spring Wheat Production Industry Expectations vs NASS

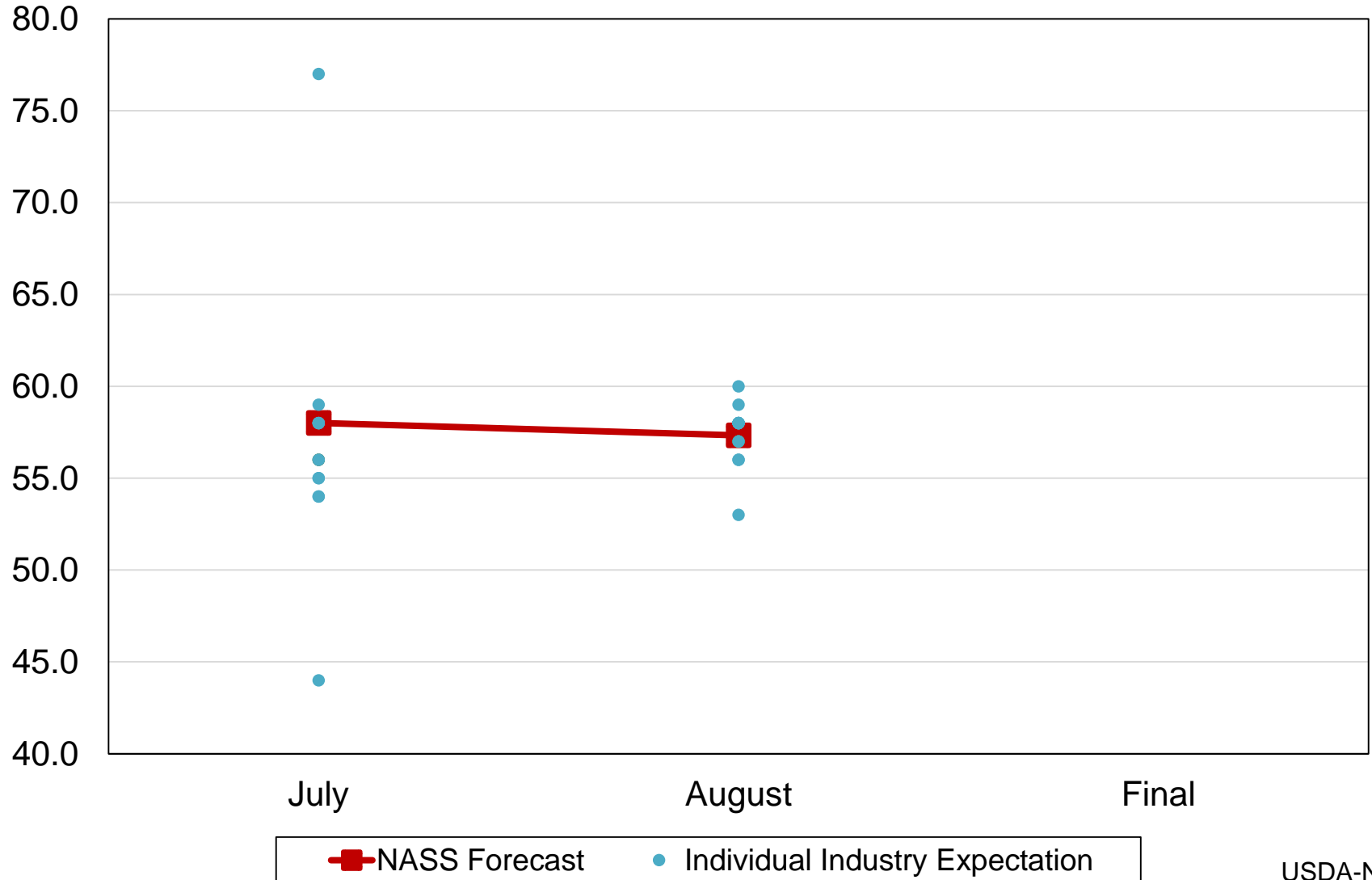
Million Bushels



■ NASS Forecast
 ● Individual Industry Expectation

2019 United States Durum Wheat Production Industry Expectations vs NASS

Million Bushels





August 2019 Crop Production

Crop	Unit	August 2019	% Change From Previous Forecast	% Change From Previous Season
Oats	Mil Bu	60.4	-2.0	+7.6
Barley	Mil Bu	172	+0.8	+12.5
Sorghum	Mil Bu	354	NA	-3.1
Alfalfa Hay	Mil Tons	55.4	NA	+5.2
Other Hay	Mil Tons	75.7	NA	+6.6
Rice	Mil Cwt	205	NA	-8.4
Peanuts	Bil Lbs	5.30	NA	-2.9



August 2019 Crop Production

Crop	Unit	August 2019	% Change From Previous Forecast	% Change From Previous Season
All Tobacco	Mil Lbs	504	NA	-5.5
Dry Beans	Mil Cwt	24.6	NA	NA
Sugarbeets	Mil Tons	34.8	NA	+4.8
Sugarcane	Mil Tons	34.4	NA	-0.4



August 2019 Crop Production

Crop	Unit	August 2019	% Change From Previous Forecast	% Change From Previous Season
Peaches	Thou Tons	734	NA	+12.6
Apples	Bil Lbs	10.6	NA	+3.6
Pears	Thou Tons	805	NA	-0.1
Grapes	Mil Tons	7.50	NA	-1.3
Hops	Mil Lbs	106	NA	-0.5
Cranberries	Mil Bbls	9.04	NA	+1.3



Upcoming Reports

Release Date	Report Title
August 16	Farm Computer Usage and Ownership
August 23	Cattle on Feed Rice Stocks
August 28	Citrus Fruits
August 30	Agricultural Prices
September 3	CAIR: Cotton, Fats & Oils, and Grain Crushings
September 12	Cotton Ginnings Crop Production



USDA Data Users' Meeting

USDA NASS Data Users' Meeting **Tuesday, October 15, 2019**

American Farm Bureau Federation
600 Maryland Ave SW #1000w
Washington, DC 20024



STAT CHAT SERIES

@usda_nass
#STATCHAT

Join @usda_nass
on Twitter using
#StatChat to discuss
the *Crop Production*
report with
Lance Honig.



MONDAY, AUG. 12 @ 1PM ET



United States Department of Agriculture
National Agricultural Statistics Service

All Reports Available At
www.nass.usda.gov

For Questions
202-720-2127
800-727-9540
nass@nass.usda.gov