



Crop Production

Executive Summary

Lance Honig, Chief
Crops Branch



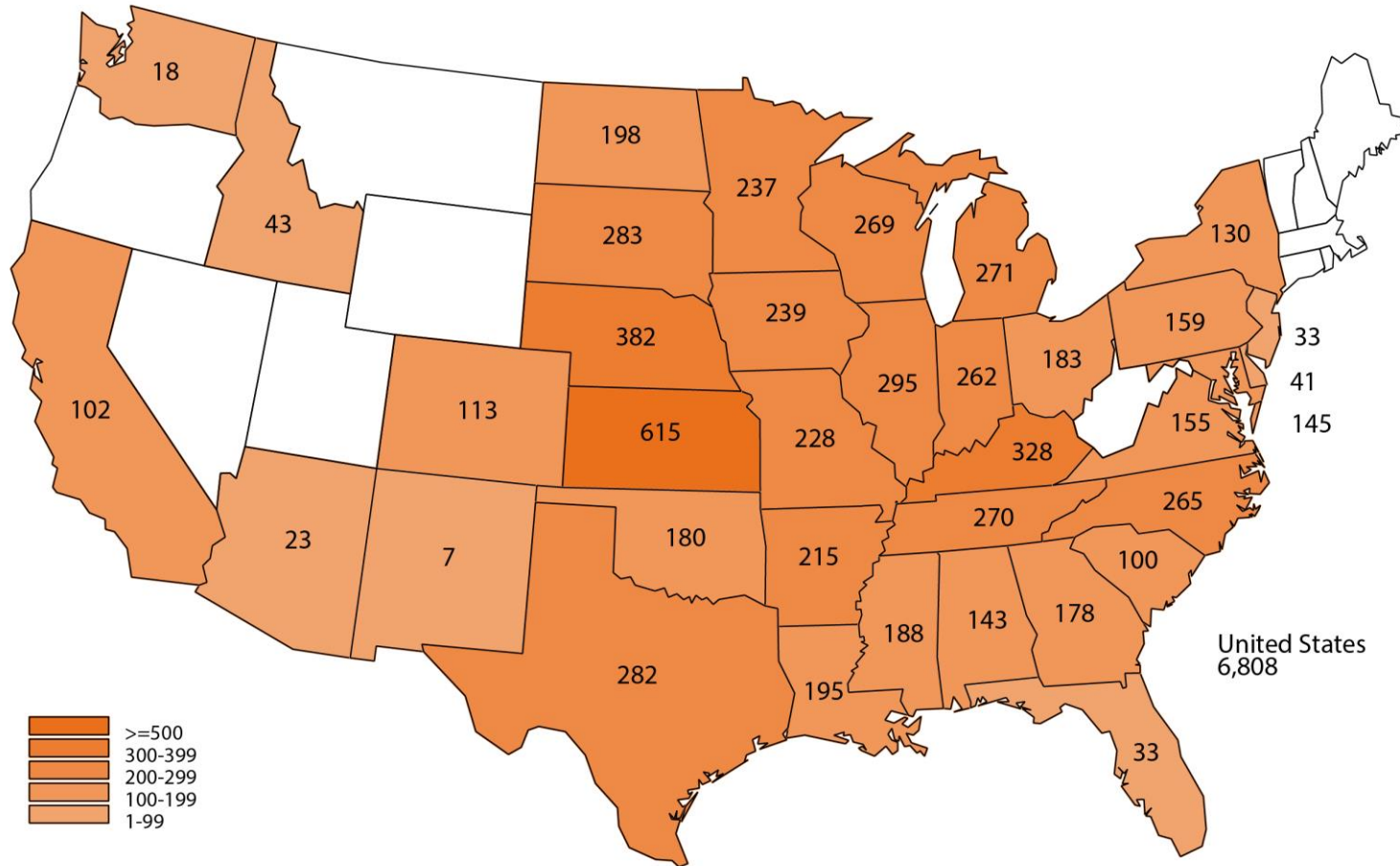
Data Sources



Operator Reported Survey	Ag Yield	Sample Size = 6,808	October 30 - November 4
Field Survey	Objective Yield Corn, Cotton, Soybeans	Sample Size = 3,930	October 24 - November 1
Remotely Sensed (Satellite)	Time Series 250 Meter MODIS Satellite Data	Focus Area Corn Belt	Imagery Through September 28

November 2021 Ag Yield Survey

Sample Sizes



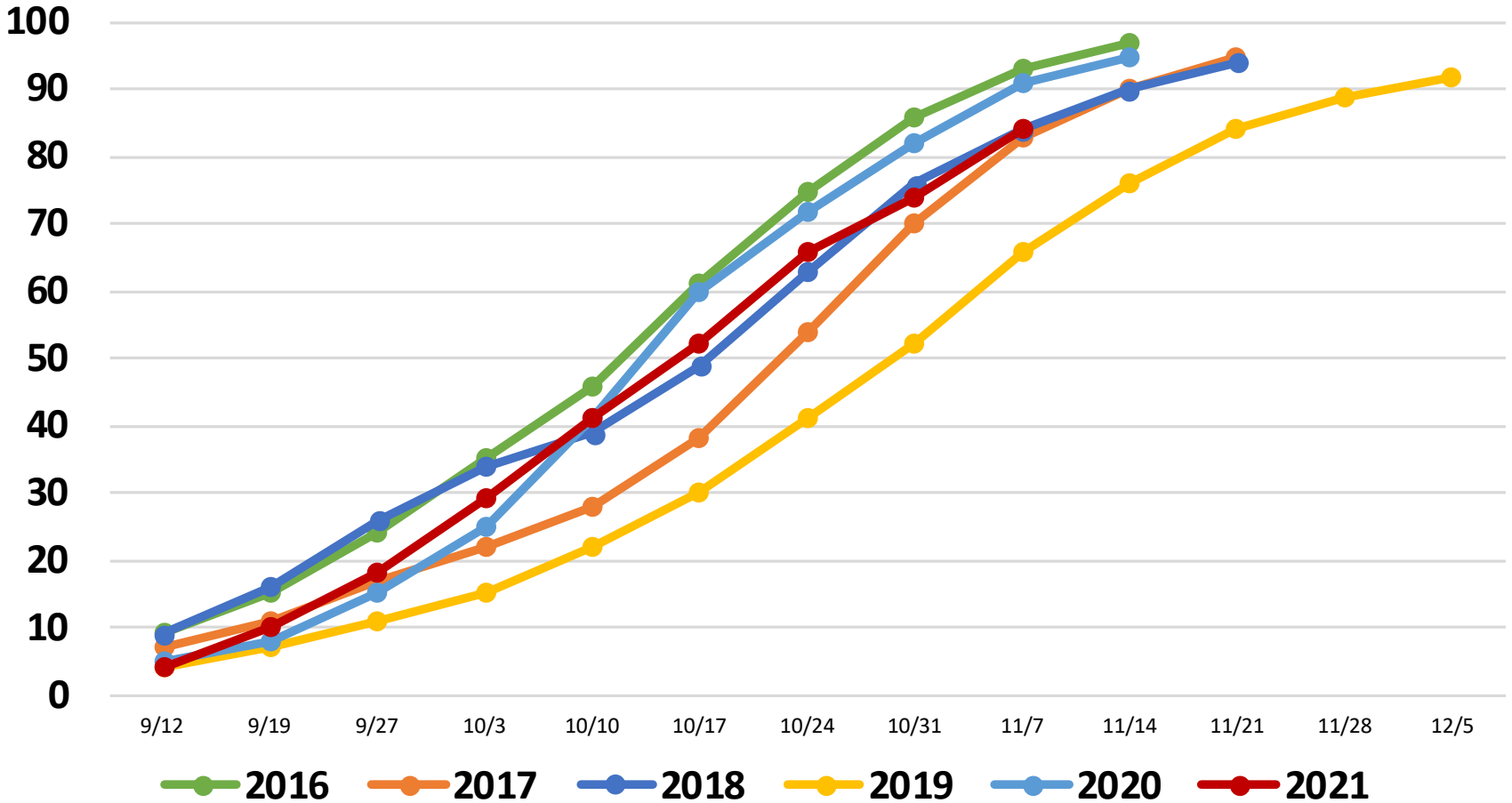


United States Corn Progress

Percent Harvested



Percent





November 2021 Corn Acreage, Yield, and Production

	Planted (1,000 Acres)	Harvested (1,000 Acres)	Yield (Bushels/Acre)	Production (1,000 Bushels)
United States	93,304	85,085	177.0	15,062,002
% Change from Previous Estimate	NC	NC	↑ 0.3	↑ 0.3
% Change from Previous Season	↑ 2.9	↑ 3.4	↑ 3.3	↑ 6.7

Top 5 States - By Production

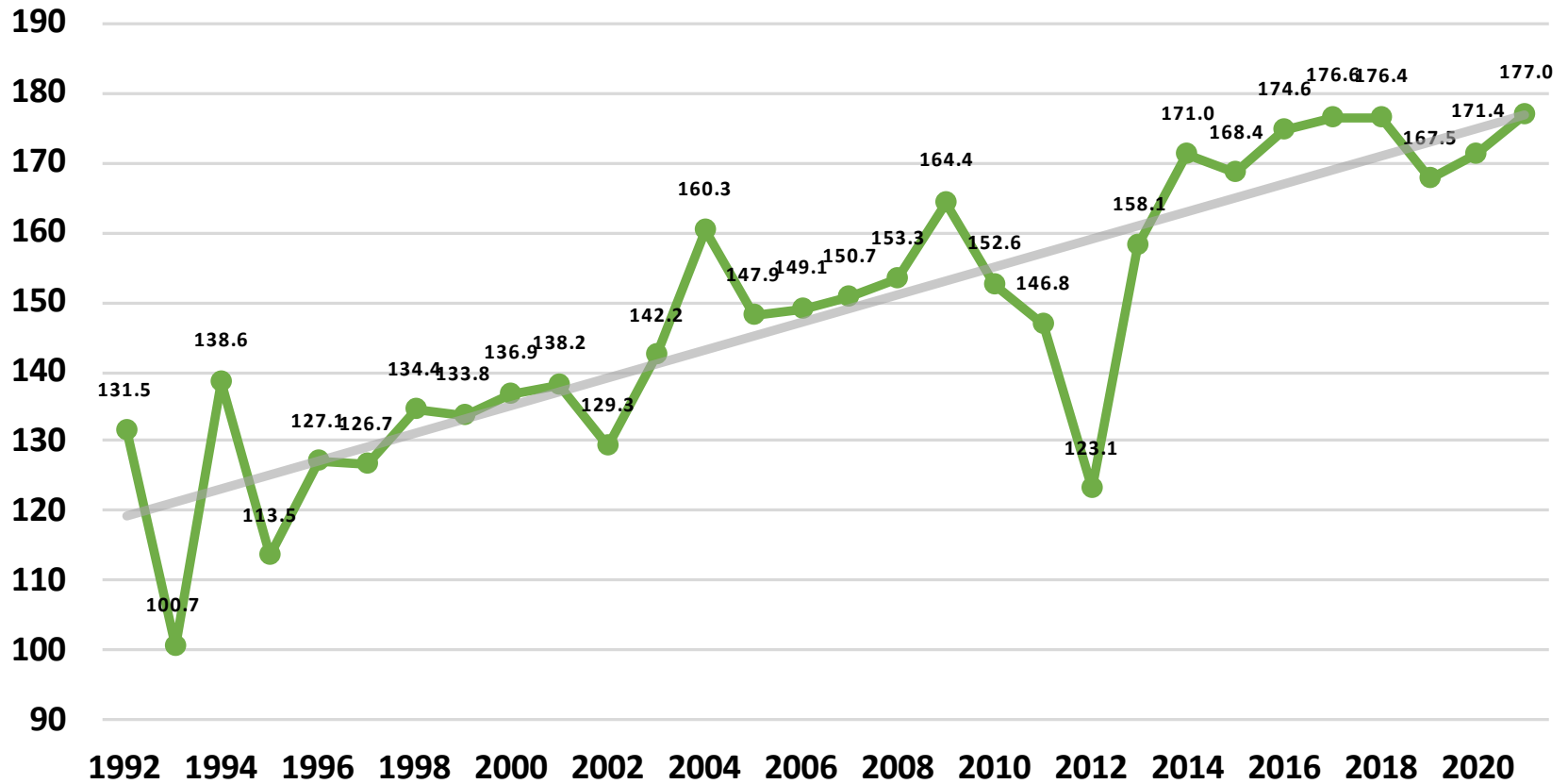
	Planted		Harvested		Yield		Production	
	(1,000 Acres)	% Δ PY	(1,000 Acres)	% Δ PY	(Bushels/Acre)	% Δ PY	(1,000 Bushels)	% Δ PY
Iowa	12,900	↓ 5.1	12,450	↓ 3.5	201	↑ 13.6	2,502,450	↑ 9.6
Illinois	11,000	↓ 2.7	10,800	↓ 2.7	207	↑ 8.4	2,235,600	↑ 5.4
Nebraska	9,900	↓ 2.9	9,600	↓ 2.9	191	↑ 6.1	1,833,600	↑ 3.0
Minnesota	8,300	↑ 3.8	7,800	↑ 3.9	186	↓ 2.6	1,450,800	↑ 1.1
Indiana	5,400	NC	5,250	NC	189	↑ 1.1	992,250	↑ 1.1



November 2021 Corn Yield United States

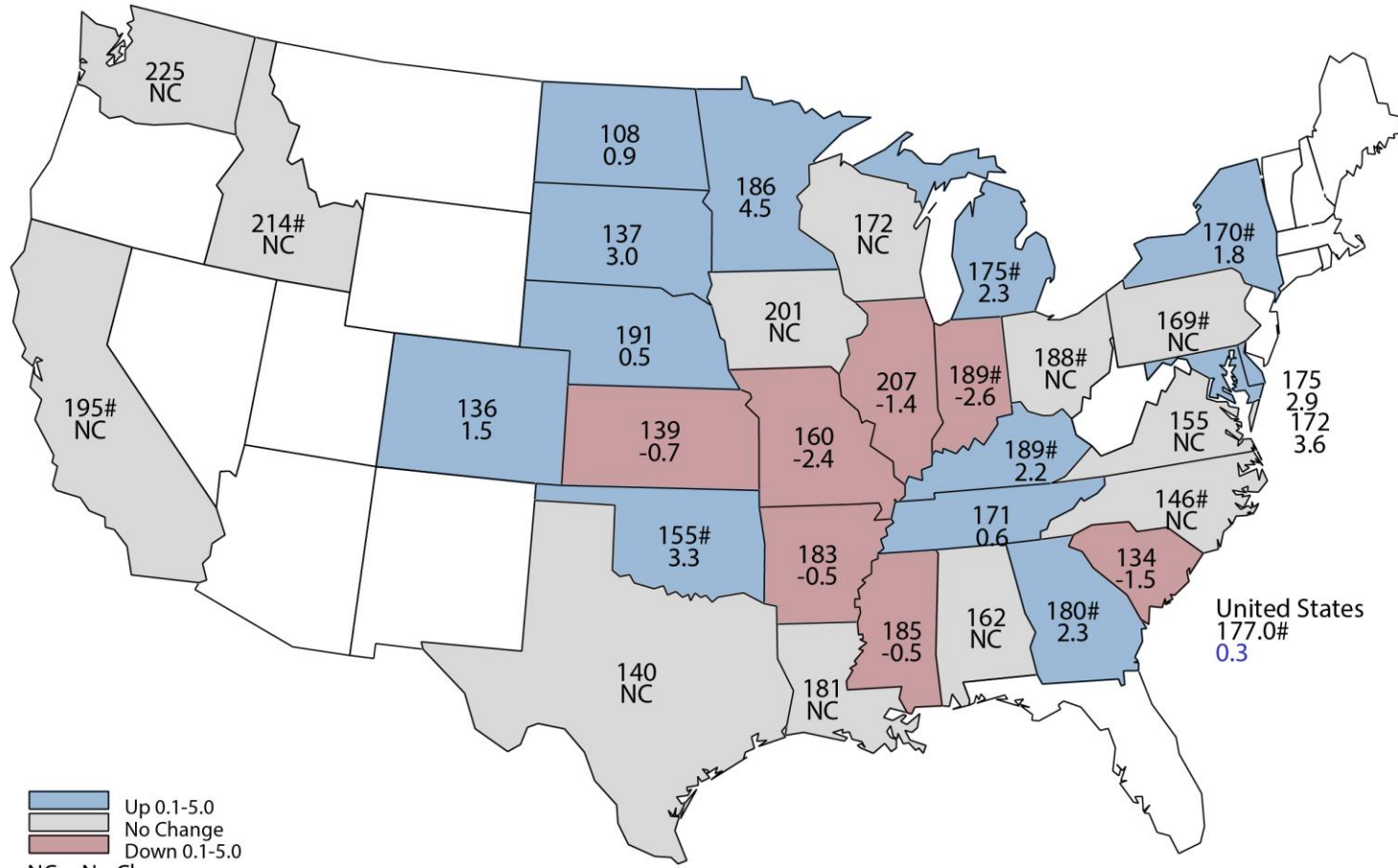


Bushels per Acre



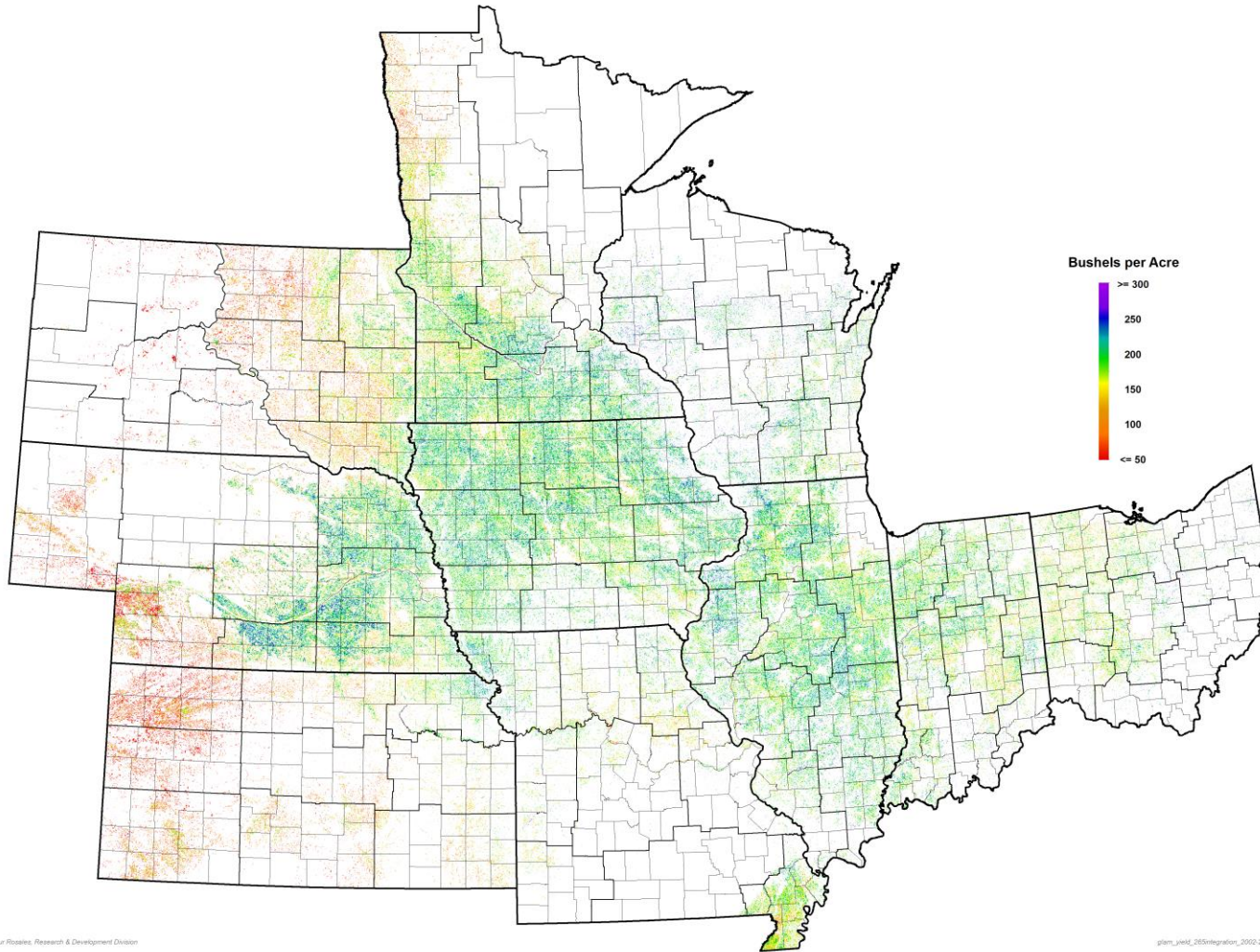
November 2021 Corn Yield

Bushels and Percent Change from Previous Month



■ Up 0.1-5.0
■ No Change
■ Down 0.1-5.0
 NC = No Change
 # = Record High
 & = Record Low

November 2021 Corn NASA Terra MODIS Modeled Yield



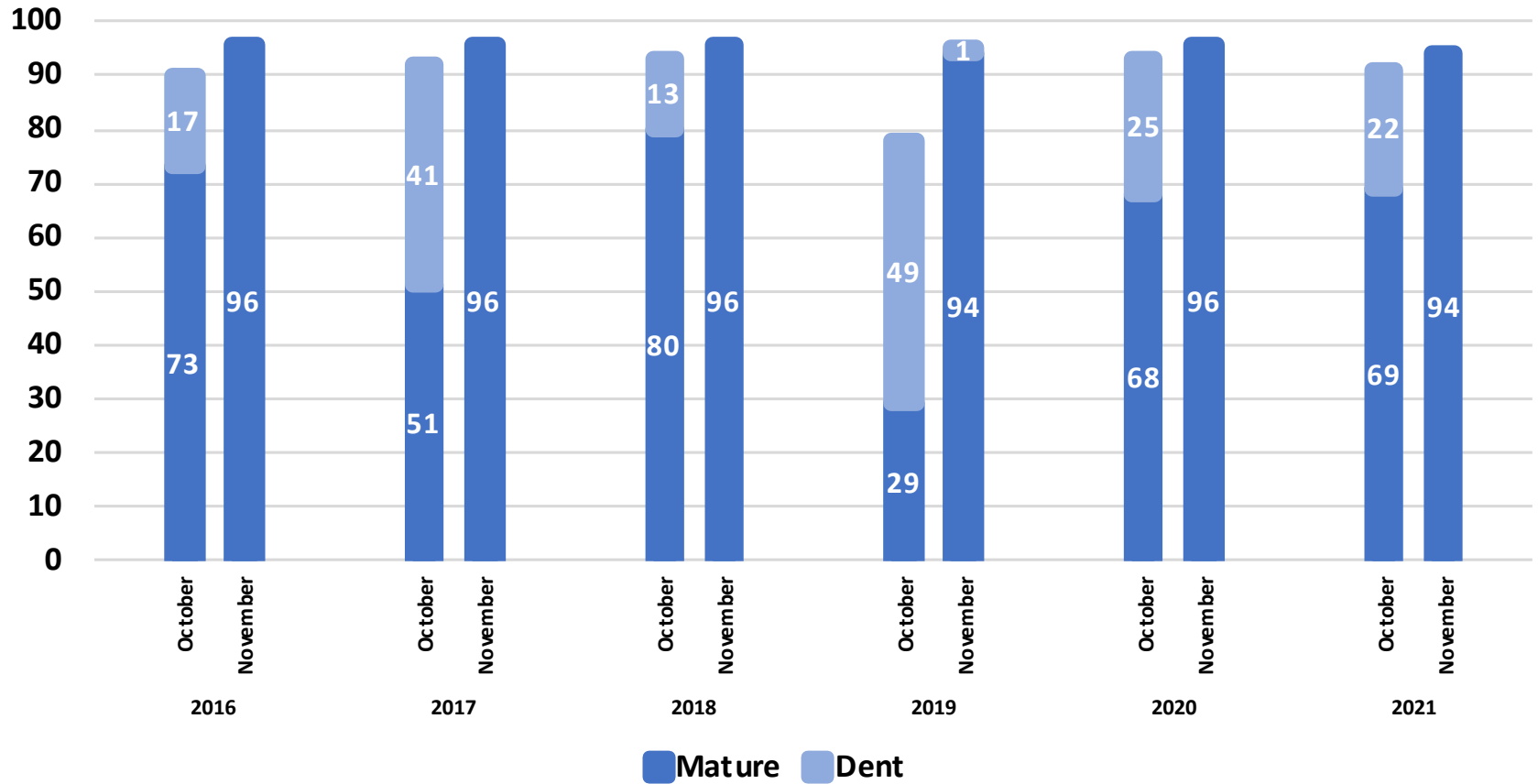
David M. Johnson & Arthur Roseare, Research & Development Division

glam_yield_265integration_2020_20_2021_corn_nc_hgpos_10/4/2021

November 2021 Corn Objective Yield

Percent of Samples Processed in the Lab

Percent

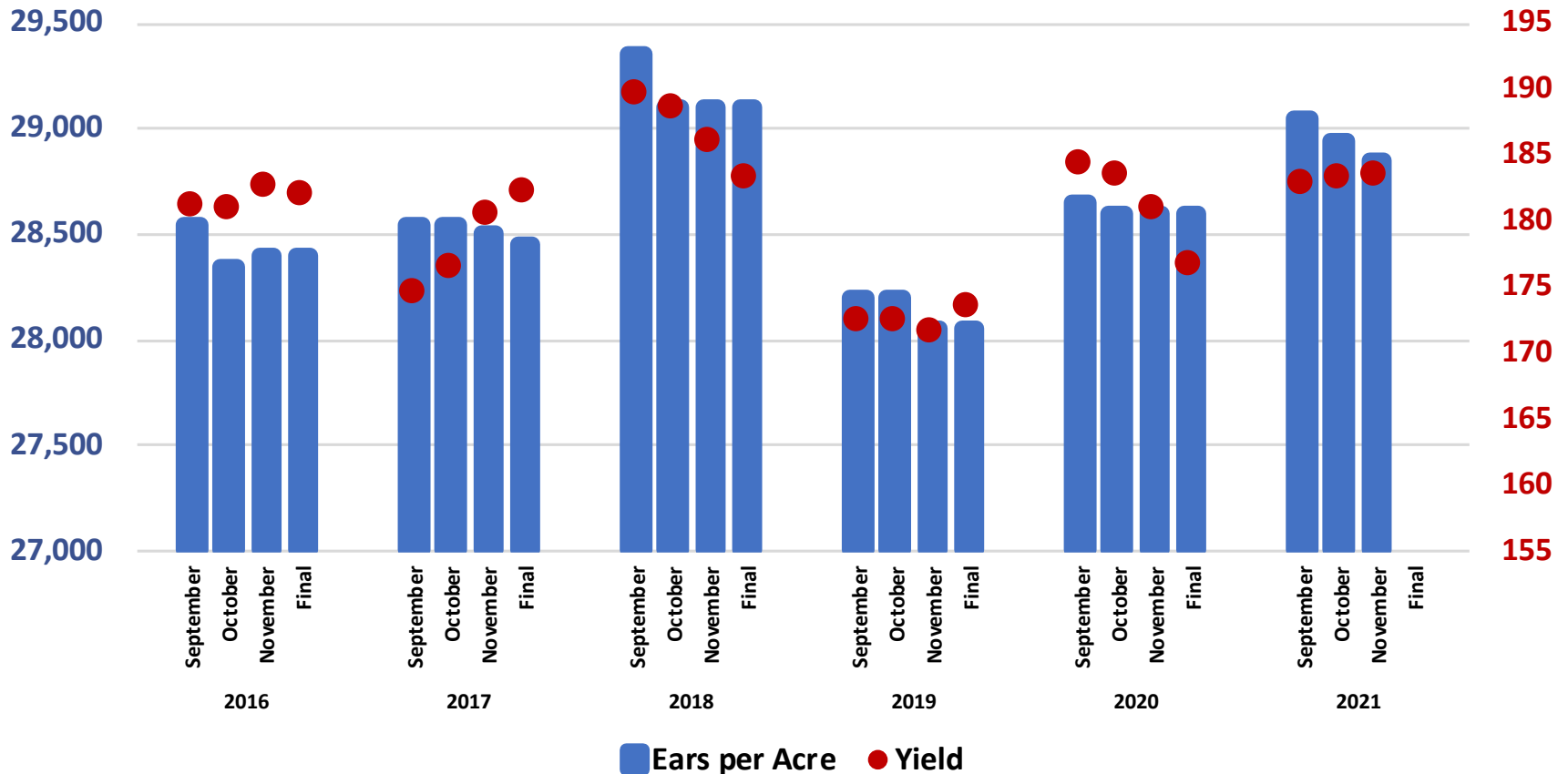


November 2021 Corn Objective Yield

Ears per Acre and Yield for 10 State Region

Ears per Acre

Bushels per Acre

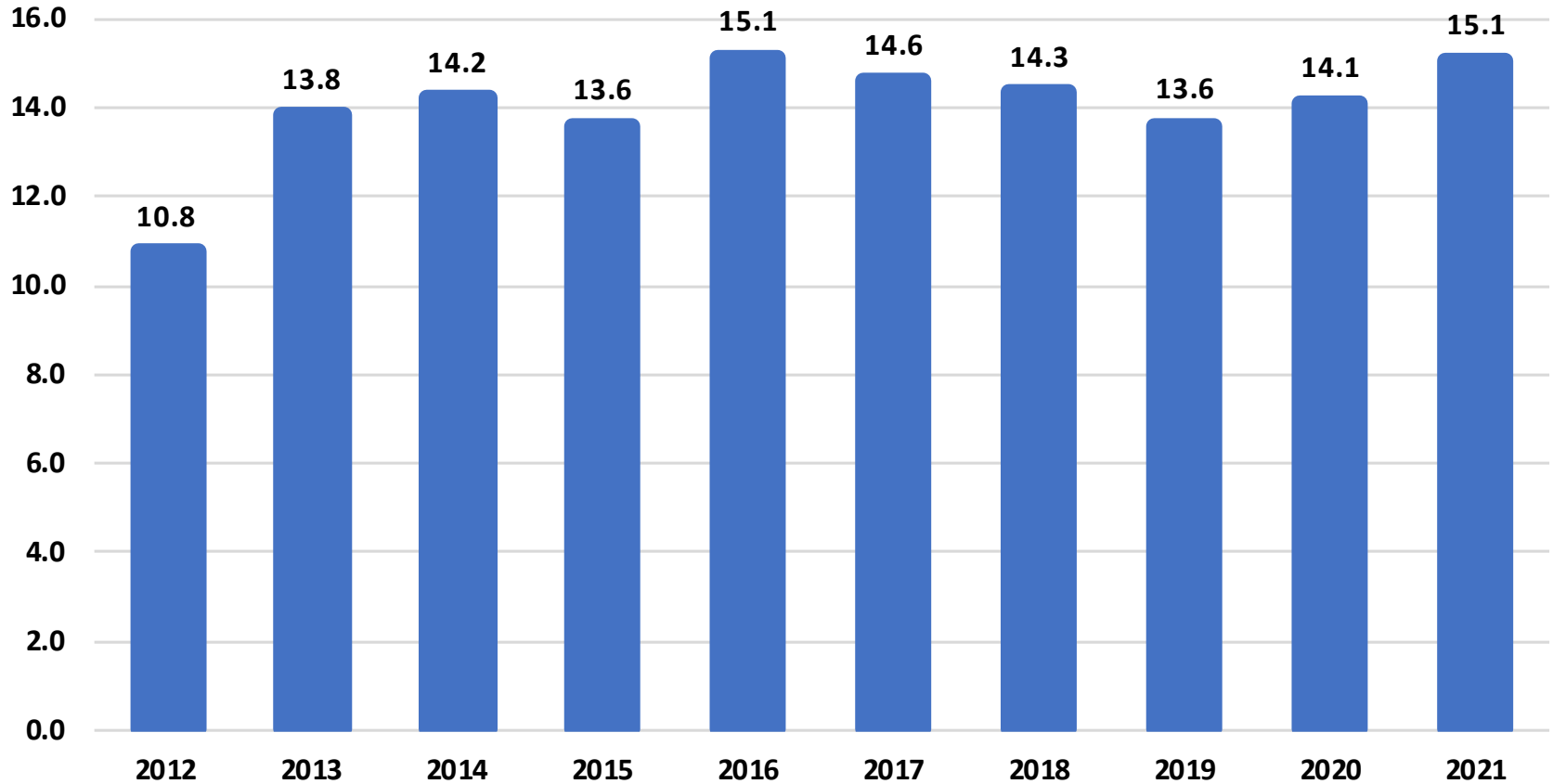




November 2021 Corn Production United States



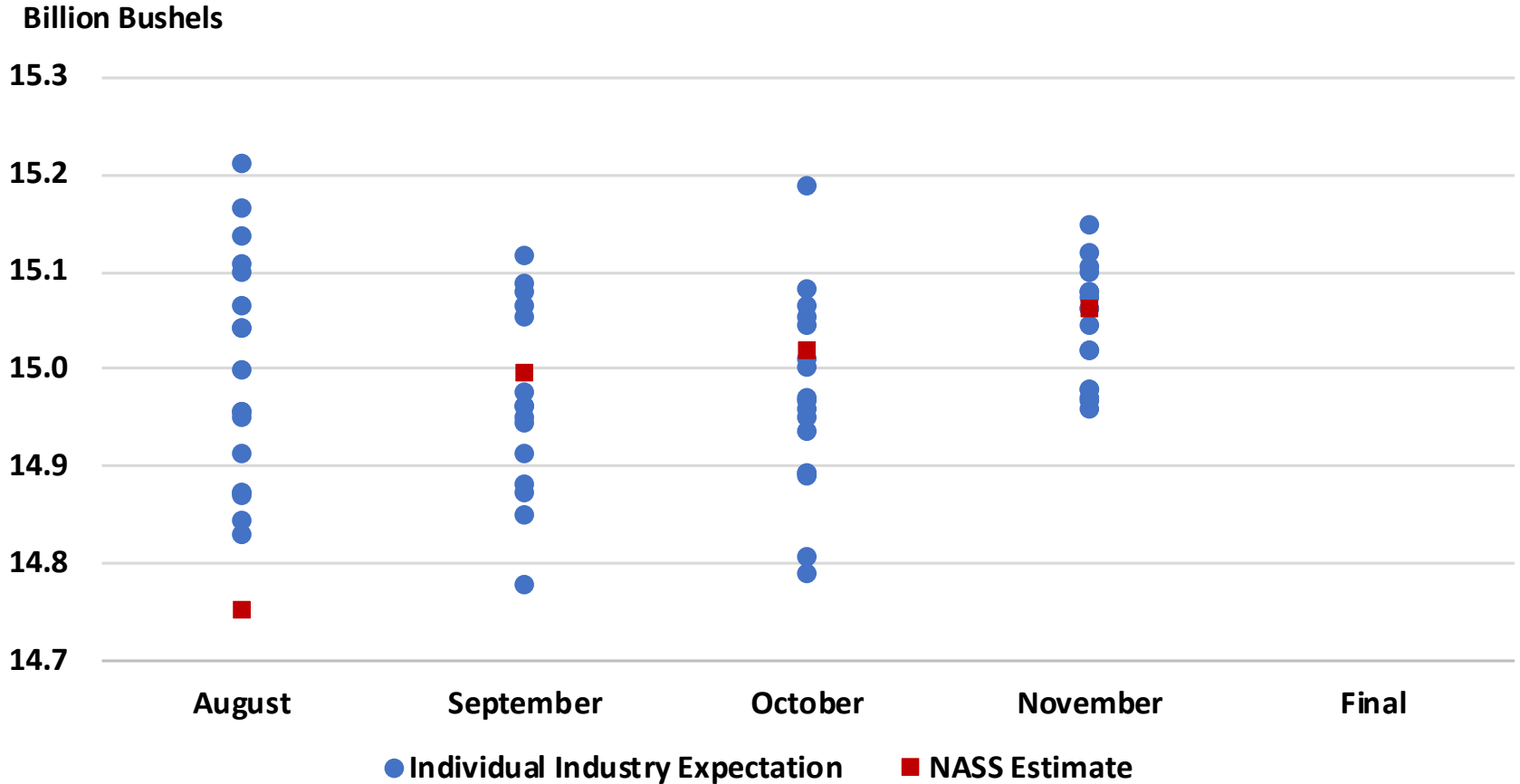
Billion Bushels





2021 U.S. Corn Production

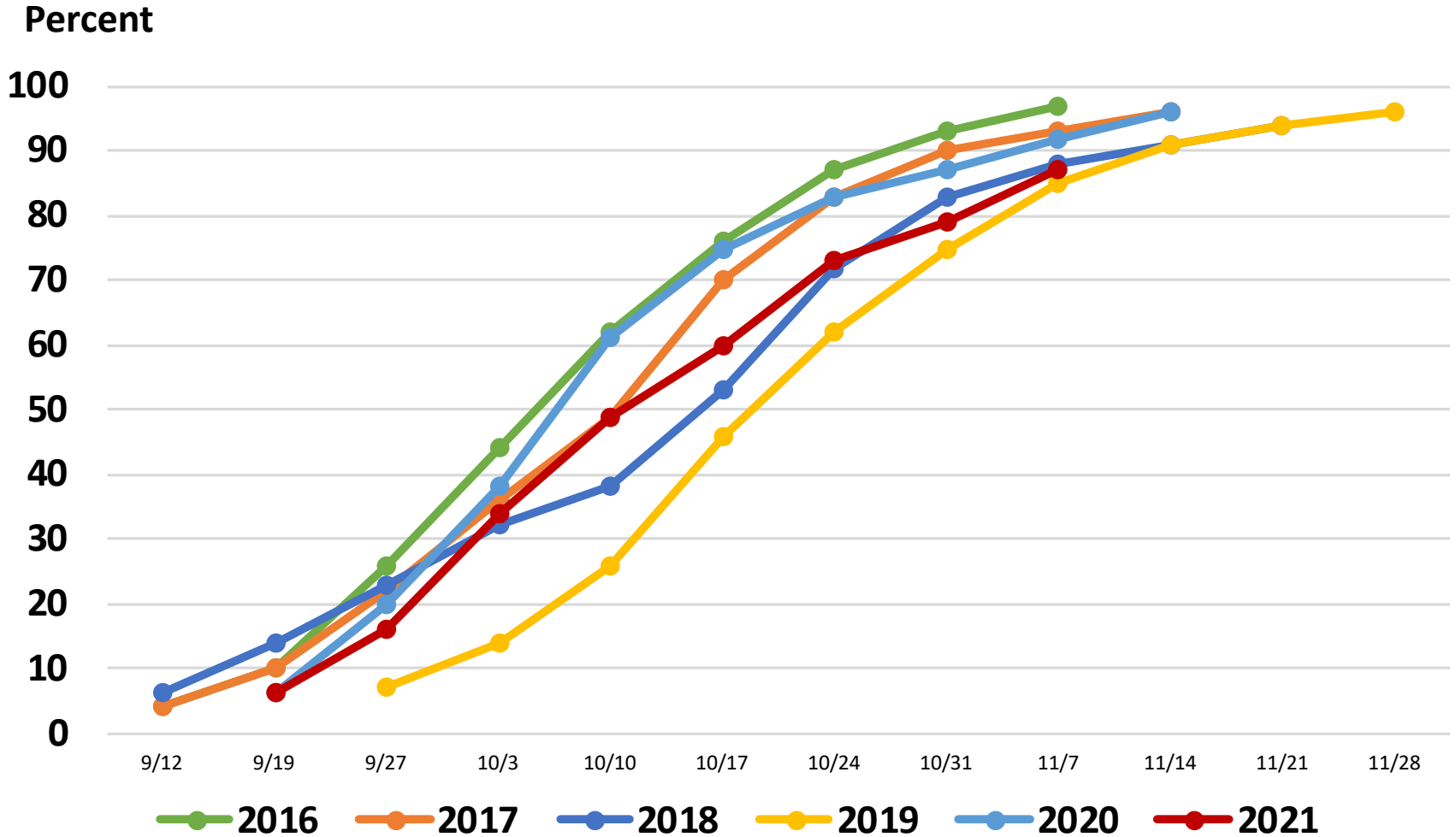
Industry Expectations vs NASS





United States Soybean Progress

Percent Harvested





November 2021 Soybeans

Acreage, Yield, and Production



	Planted (1,000 Acres)	Harvested (1,000 Acres)	Yield (Bushels/Acre)	Production (1,000 Bushels)
United States	87,235	86,436	51.2	4,424,942
% Change from Previous Estimate	NC	NC	↓ 0.6	↓ 0.5
% Change from Previous Season	↑ 4.7	↑ 4.6	↑ 0.4	↑ 4.9

Top 5 States - By Production

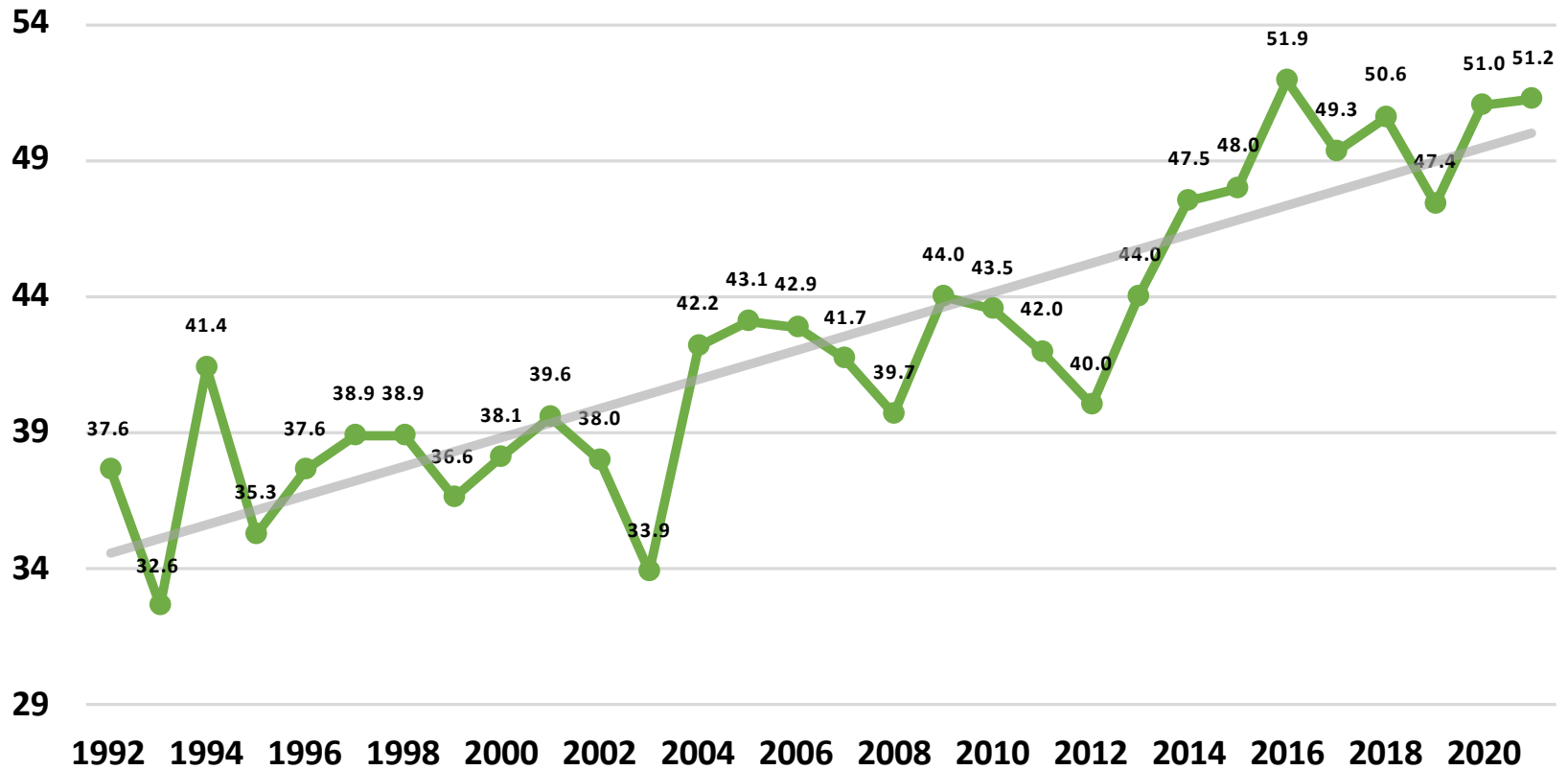
	Planted		Harvested		Yield		Production	
	(1,000 Acres)	% Δ PY	(1,000 Acres)	% Δ PY	(Bushels/Acre)	% Δ PY	(1,000 Bushels)	% Δ PY
Illinois	10,600	↑ 2.9	10,550	↑ 2.9	64.0	↑ 6.7	675,200	↑ 9.8
Iowa	10,100	↑ 6.9	10,020	↑ 6.9	60.0	↑ 11.1	601,200	↑ 18.8
Minnesota	7,700	↑ 3.4	7,630	↑ 3.4	49.0	↓ 2.0	373,870	↑ 1.3
Nebraska	5,600	↑ 7.7	5,550	↑ 7.6	62.0	↑ 6.9	344,100	↑ 15.0
Indiana	5,700	↓ 0.9	5,690	↓ 0.7	57.0	↓ 3.4	324,330	↓ 4.1



November 2021 Soybean Yield United States

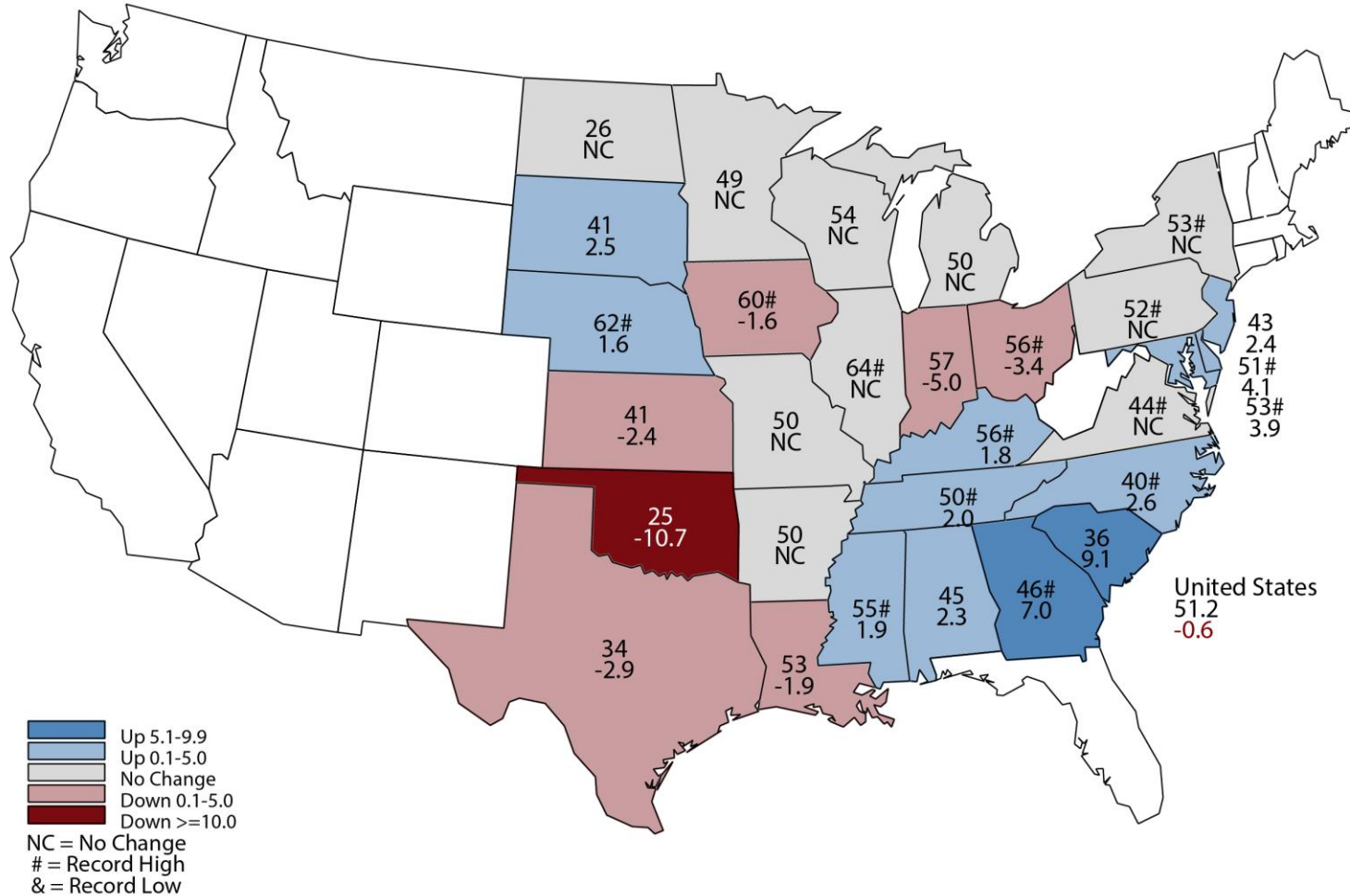


Bushels per Acre



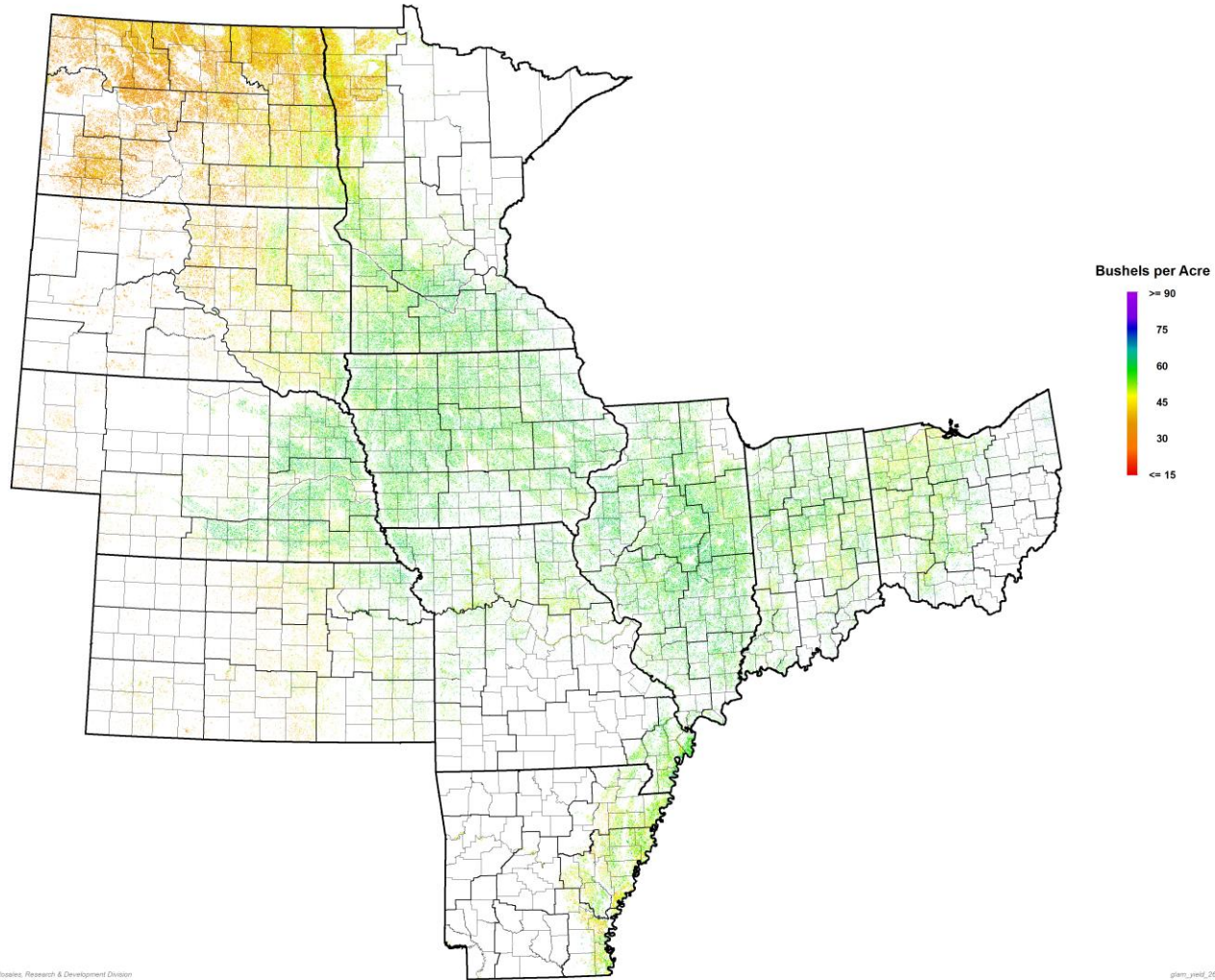
November 2021 Soybean Yield

Bushels and Percent Change from Previous Month



November 2021 Soybeans

NASA Terra MODIS Modeled Yield



David M. Johnson & Arthur Roseboro, Research & Development Division

glam_yield_255integration_2002-20_2021_soy_ma_hqos_10/9/2021

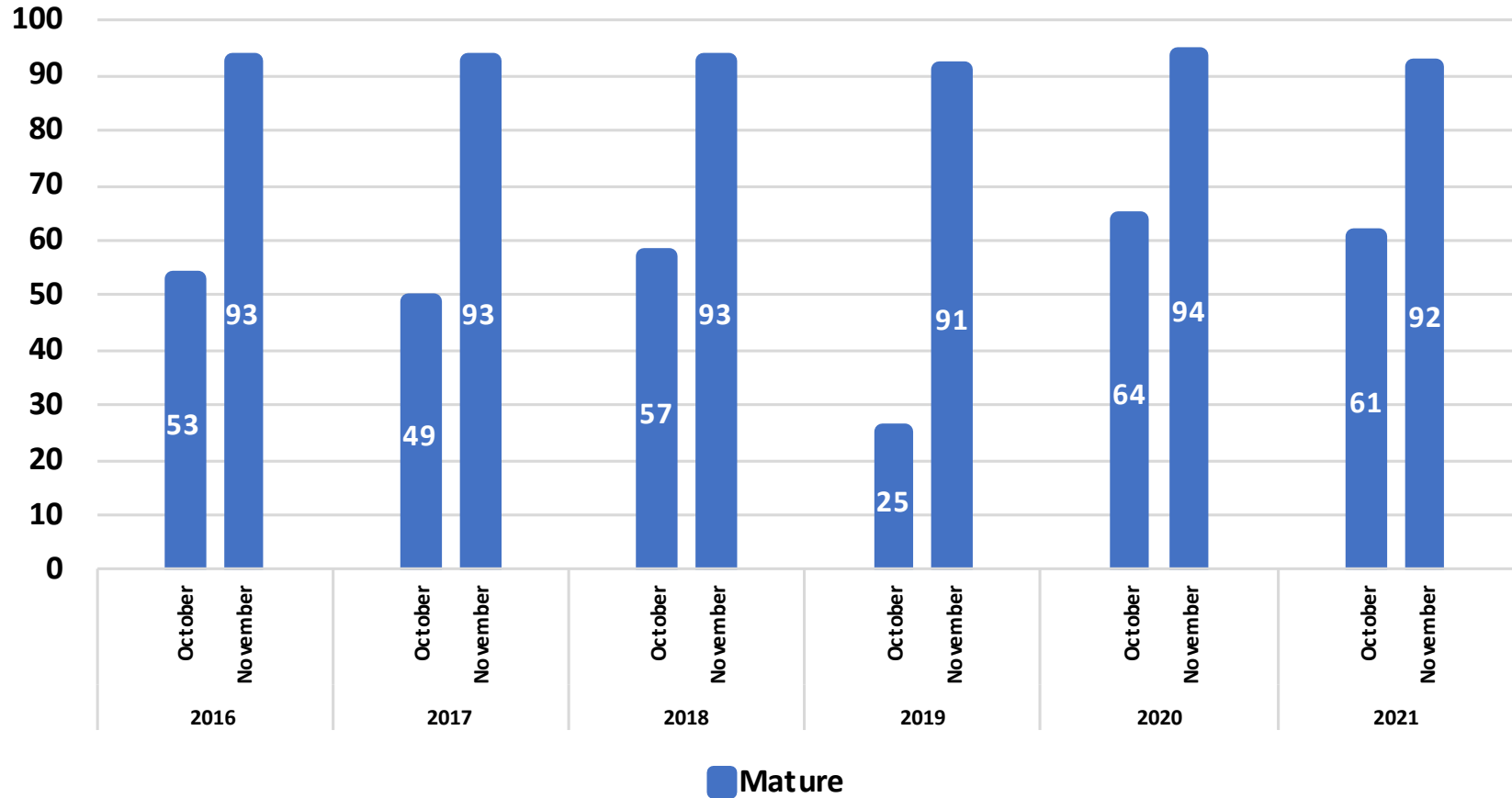


November 2021 Soybean Objective Yield

Percent of Samples Processed in the Lab



Percent



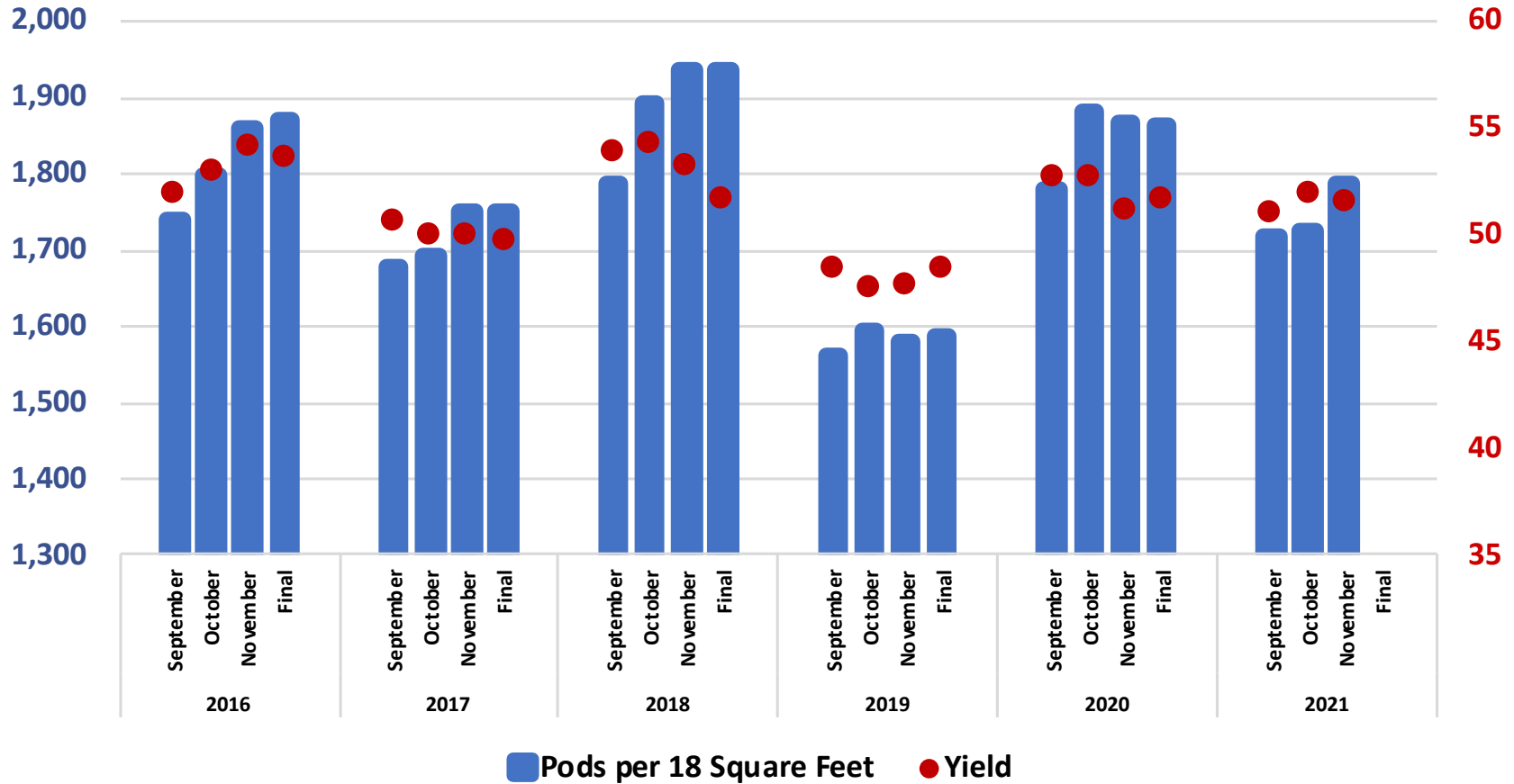


November 2021 Soybean Objective Yield

Pods per 18 Square Feet and Yield for 11 State Region

Pods per 18 Square Feet

Bushels per Acre

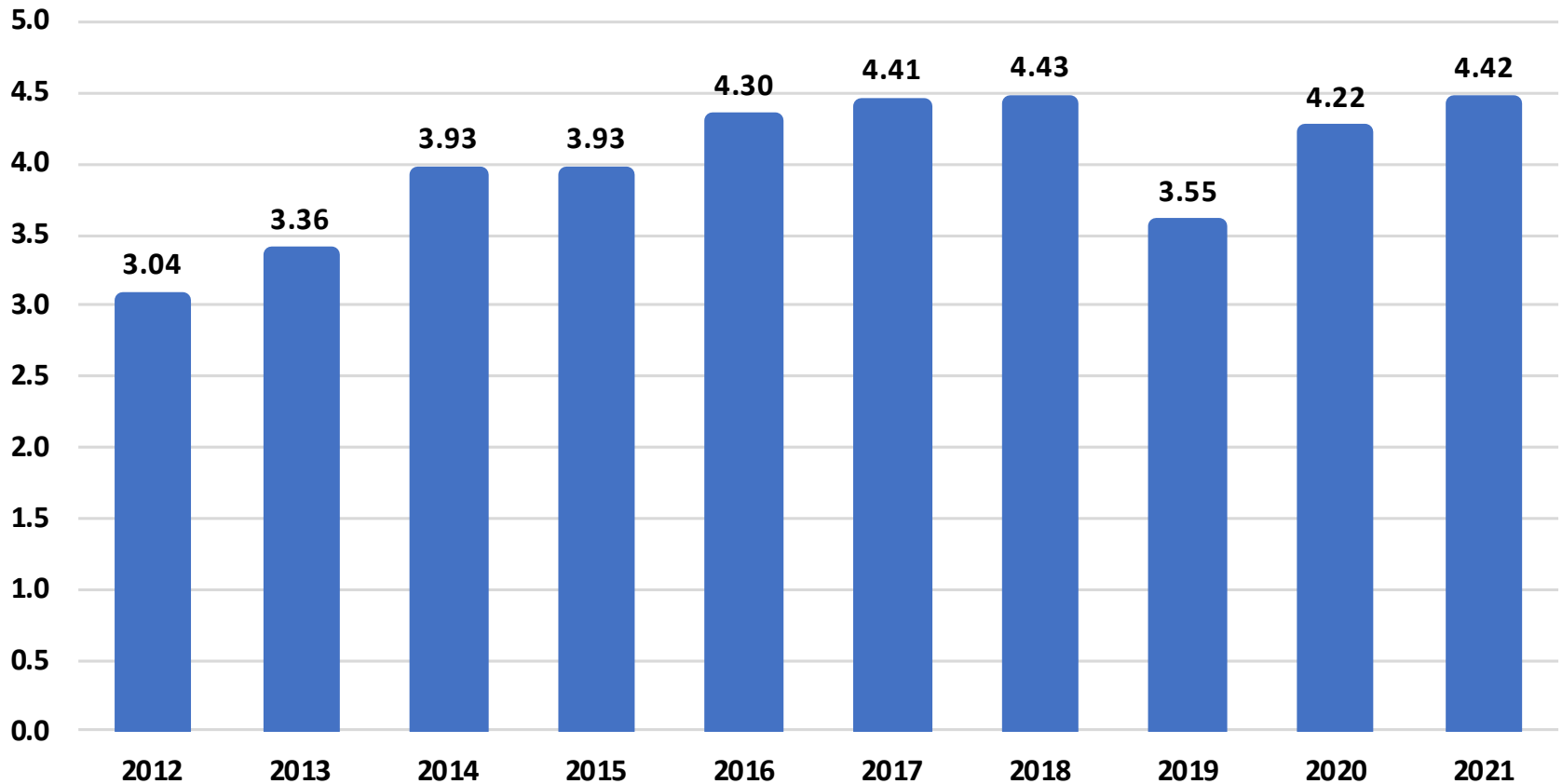




November 2021 Soybean Production United States



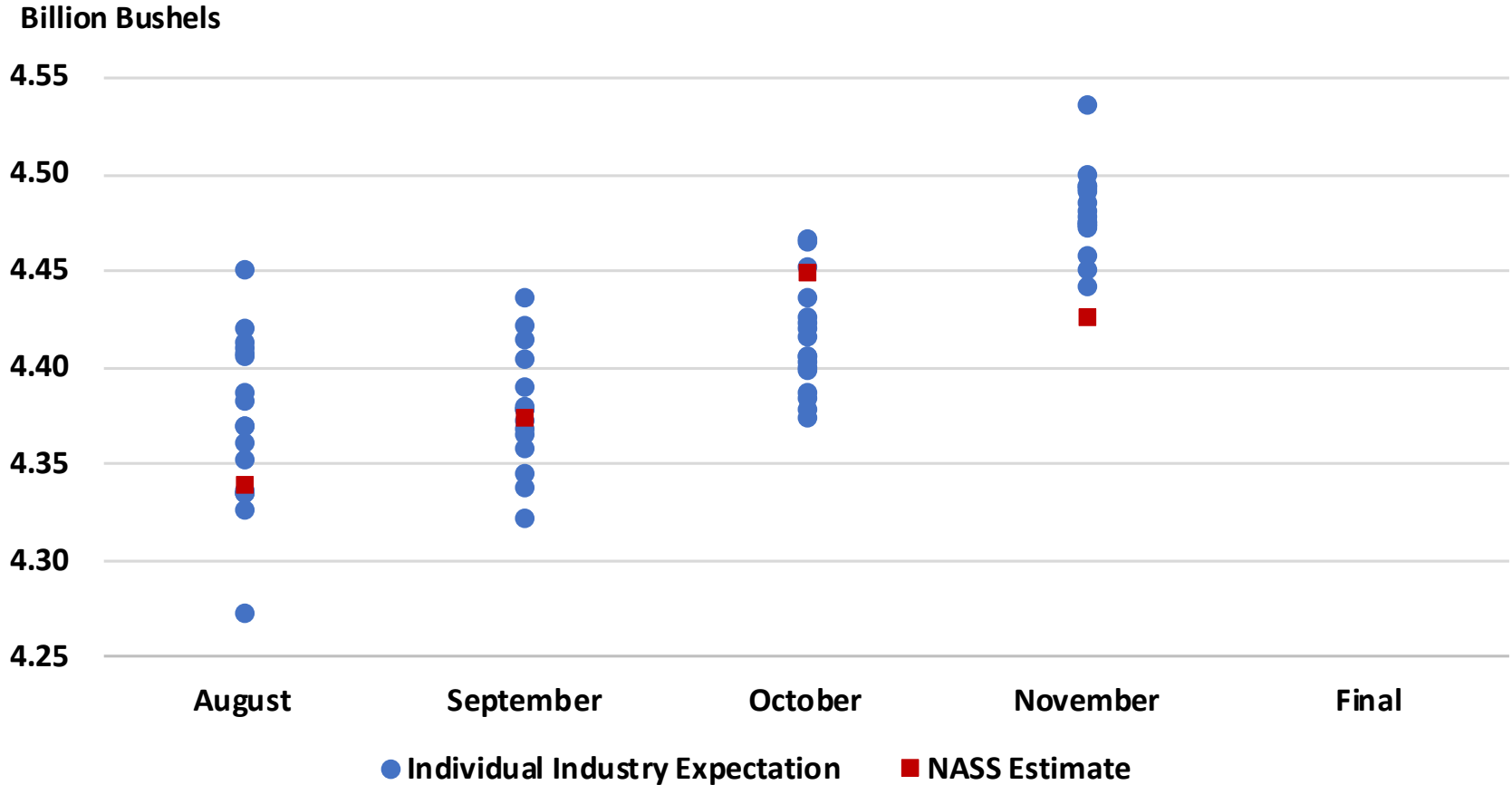
Billion Bushels





2021 U.S. Soybean Production

Industry Expectations vs NASS



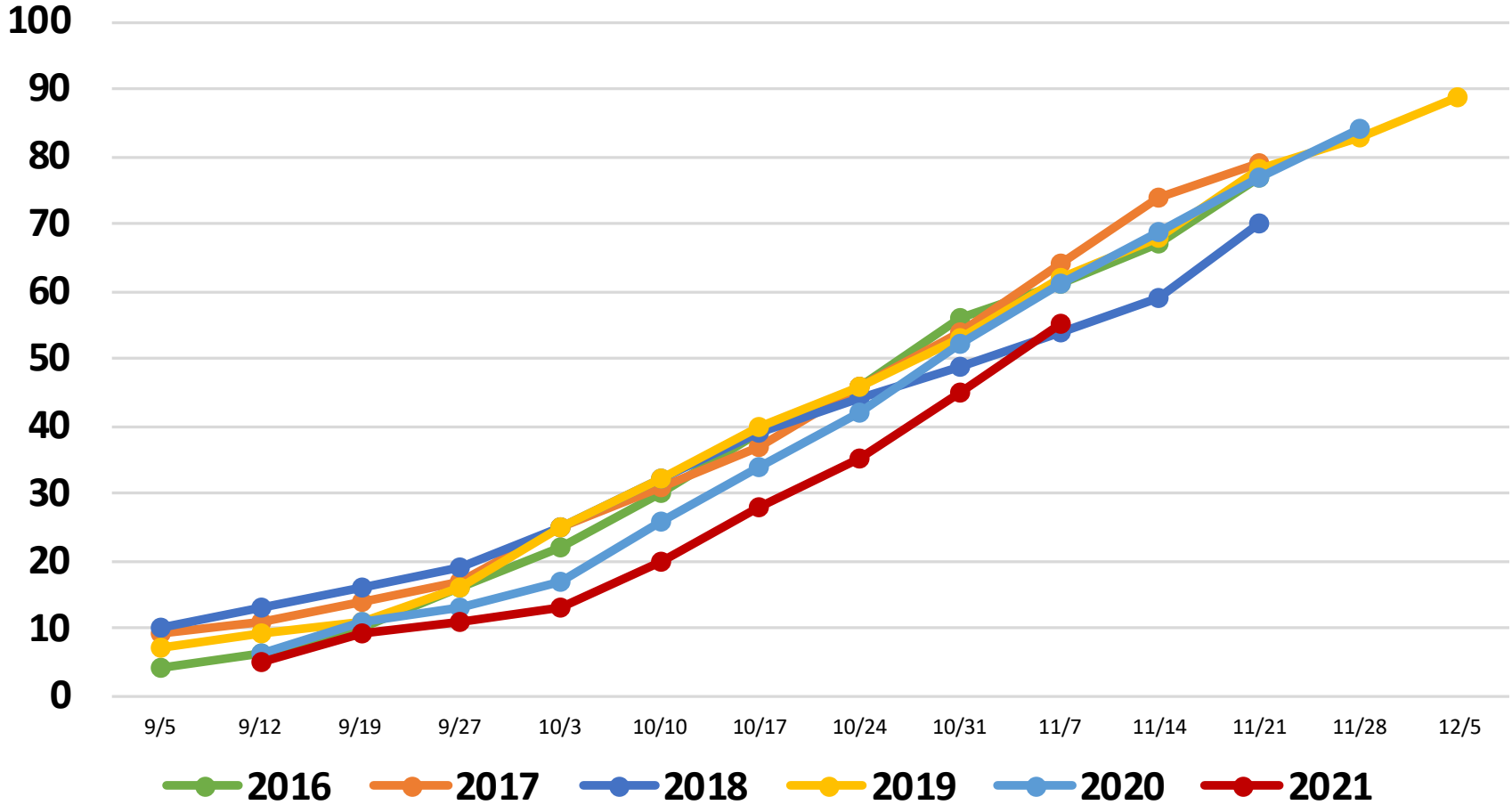


United States Cotton Progress

Percent Harvested



Percent





November 2021 Cotton Acreage, Yield, and Production



	Planted (1,000 Acres)	Harvested (1,000 Acres)	Yield (Pounds/Acre)	Production (1,000 Bales)
United States	11,191	9,922	880	18,198
% Change from Previous Estimate	NC	NC	↑ 1.0	↑ 1.1
% Change from Previous Season	↓ 7.5	↑ 19.9	↑ 3.9	↑ 24.6

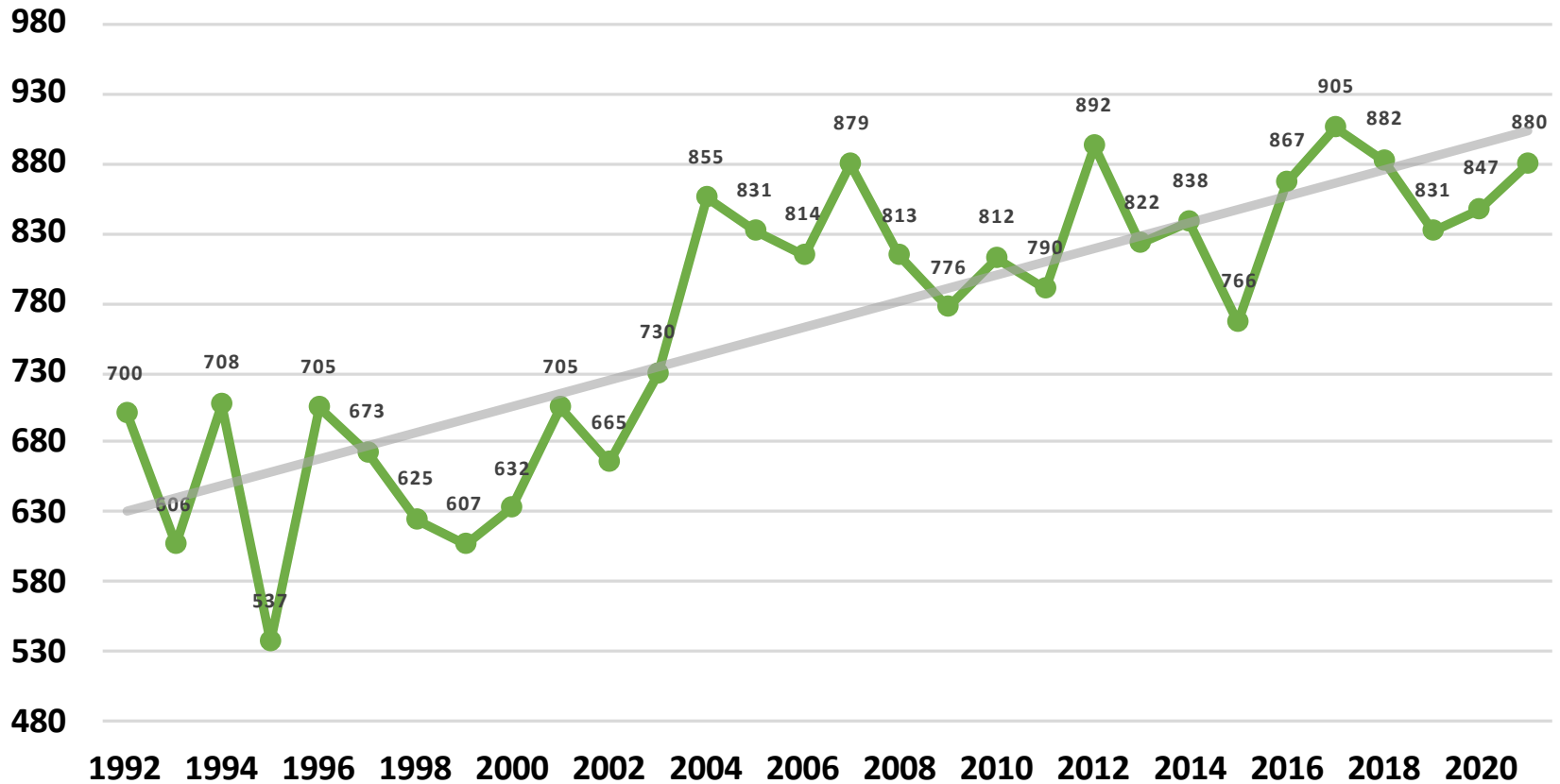
Top 5 States - By Production										
	Planted (1,000 Acres)		Harvested (1,000 Acres)		Yield (Pounds/Acre)		Production (1,000 Bales)			
		% Δ PY		% Δ PY		% Δ PY		% Δ PY		
Texas	6,367	↓ 6.9	5,266	↑ 63.0	741.0	↑ 8.2	8,132	↑ 76.3		
Georgia	1,170	↓ 1.7	1,160	↓ 1.7	952.0	↑ 7.3	2,300	↑ 5.5		
Arkansas	475	↓ 9.5	470	↓ 9.6	1,226.0	↑ 4.0	1,200	↓ 6.0		
Mississippi	445	↓ 16.0	430	↓ 18.1	1,150.0	↑ 6.6	1,030	↓ 12.7		
Missouri	315	↑ 6.8	310	↑ 8.0	1,285.0	↑ 12.3	830	↑ 21.3		



November 2021 Cotton Yield United States

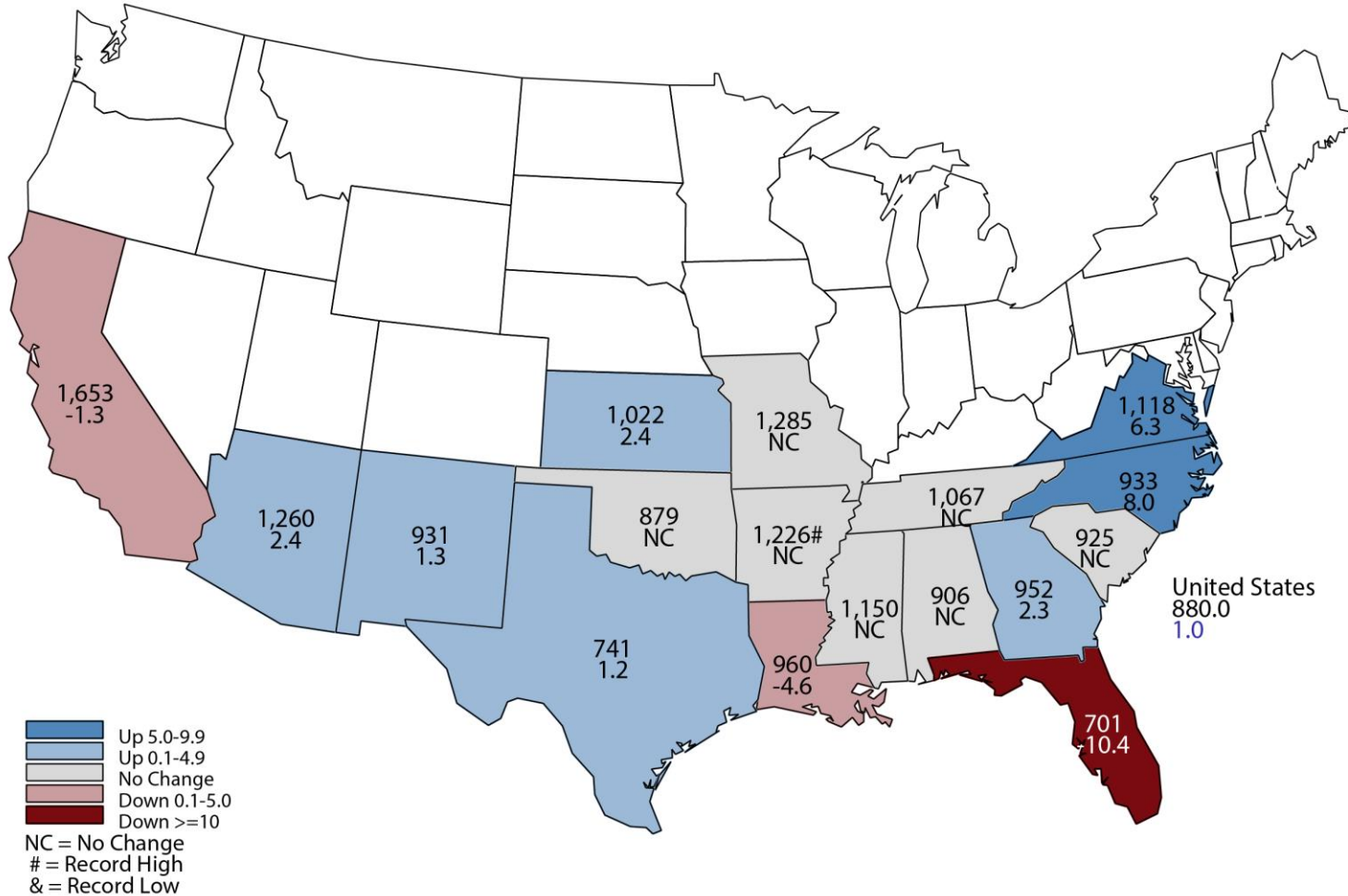


Pounds per Acre



November 2021 Cotton Yield

Pounds and Percent Change from Previous Month

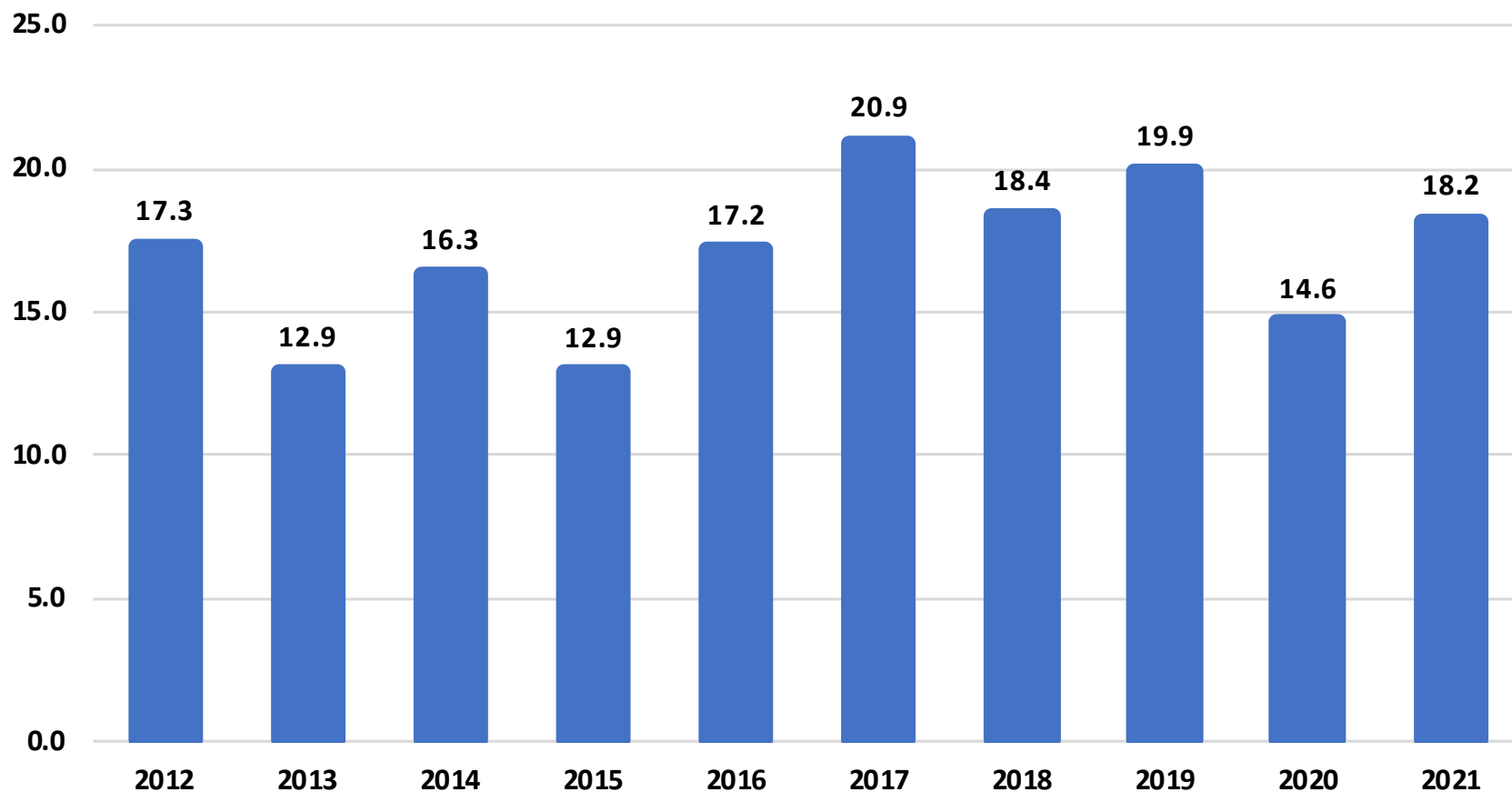




November 2021 Cotton Production United States



Million Bales





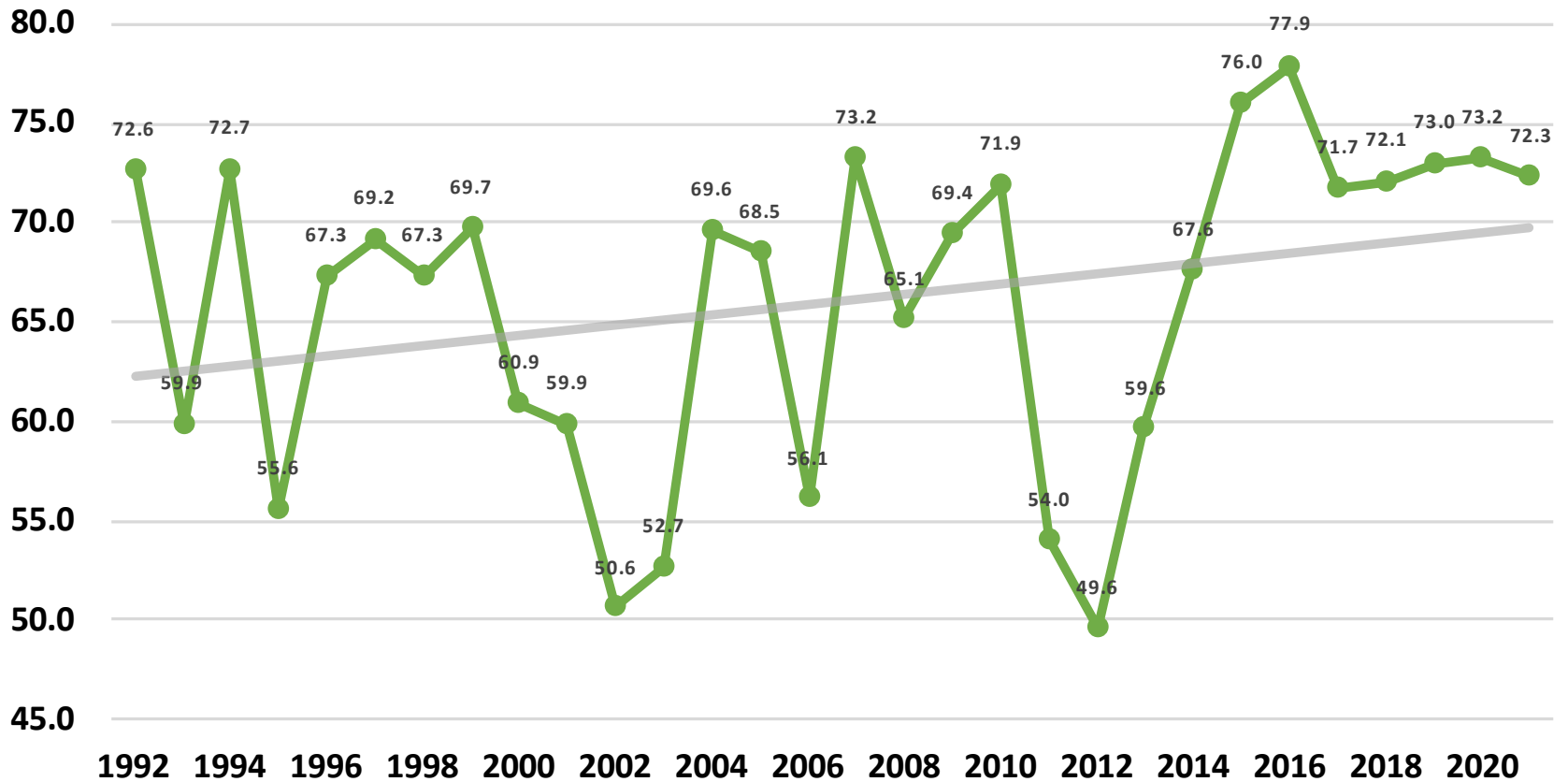
November 2021 Sorghum Acreage, Yield, and Production

	Planted (1,000 Acres)	Harvested (1,000 Acres)	Yield (Bushels/Acre)	Production (1,000 Bushels)
United States	7,340	6,520	72.3	471,125
% Change from Previous Estimate	NC	NC	NC	↓ 0.1
% Change from Previous Season	↑ 24.8	↑ 28.0	↓ 1.2	↑ 26.3

	Top 5 States - By Production							
	Planted (1,000 Acres)		Harvested (1,000 Acres)		Yield (Bushels/Acre)		Production (1,000 Bushels)	
		% Δ PY		% Δ PY		% Δ PY		% Δ PY
Kansas	3,600	↑ 20.0	3,350	↑ 19.6	81.0	↓ 4.7	271,350	↑ 14.0
Texas	2,150	↑ 19.4	1,830	↑ 22.0	67.0	↑ 6.3	122,610	↑ 29.7
Oklahoma	430	↑ 41.0	355	↑ 54.3	65.0	↑ 44.4	23,075	↑ 122.9
Nebraska	320	↑ 64.1	265	↑ 76.7	75.0	↓ 17.6	19,875	↑ 45.6
Colorado	500	↑ 35.1	435	↑ 70.6	40.0	↑ 100.0	17,400	↑ 241.2

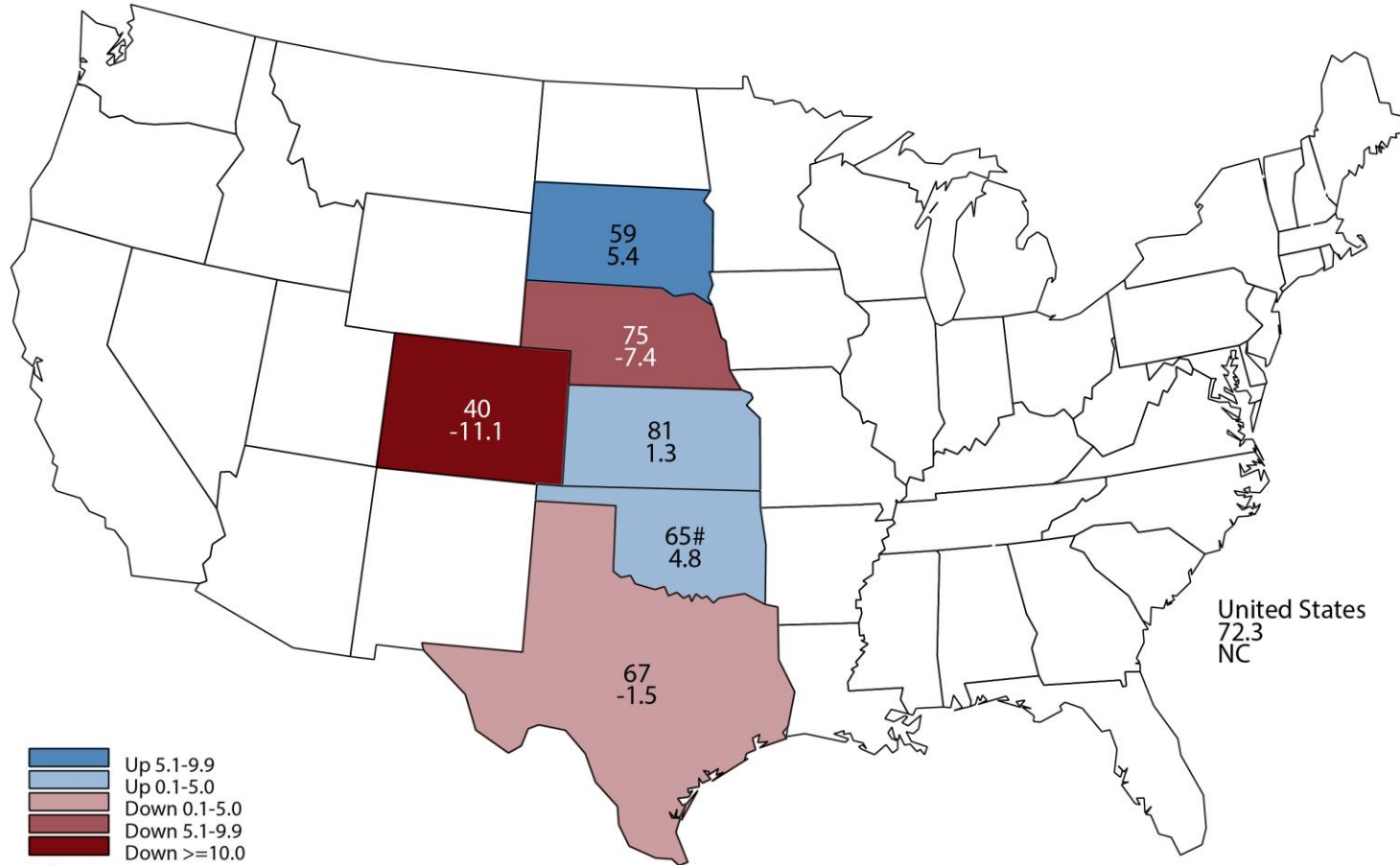
Sorghum Yield United States

Bushels per Acre



November 2021 Sorghum Yield

Bushels and Percent Change from Previous Month



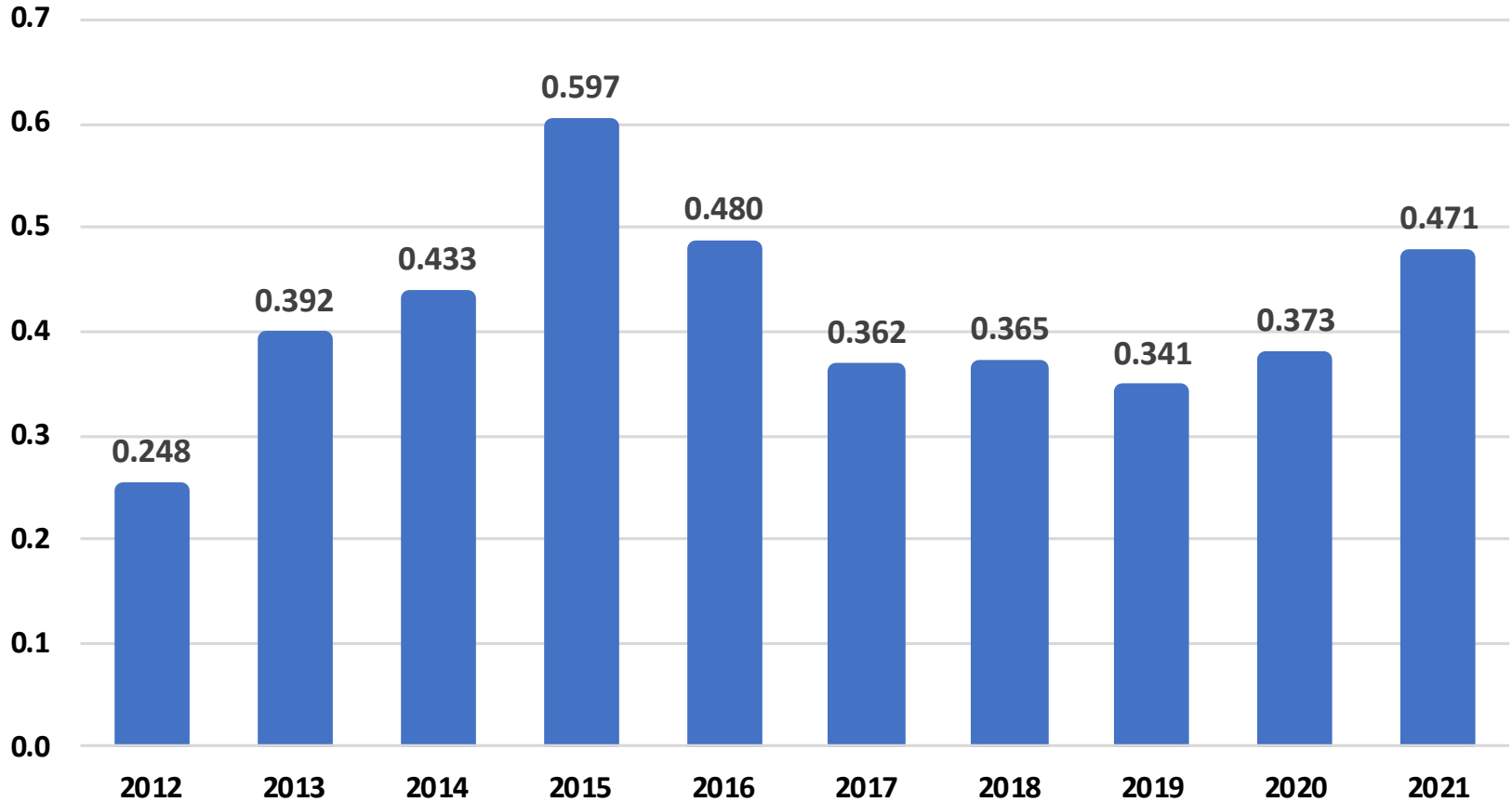
■ Up 5.1-9.9
■ Up 0.1-5.0
■ Down 0.1-5.0
■ Down 5.1-9.9
■ Down >=10.0

NC = No Change
 # = Record High
 & = Record Low

Sorghum Production

United States

Billion Bushels





November 2021 Field Crops

Acreage, Yield, and Production



	Planted (1,000 Acres)	Harvested (1,000 Acres)	Yield (Units per Acre)	Unit	Production (1,000 Units)	Unit
Peanuts	1,580	1,533	4,072	Lb	6,242,500	Lb
% Change from Previous Estimate	NC	NC	↓ 0.8		↓ 0.8	
% Change from Previous Season	↓ 5.0	↓ 5.1	↑ 6.8		↑ 1.4	
Potatoes	951	942	438	Cwt	413,162	Cwt
% Change from Previous Estimate	↑ 0.8	↑ 0.8	N/A		N/A	
% Change from Previous Season	↑ 3.5	↑ 3.4	↓ 5.0		↓ 1.6	
Rice	2,541	2,499	7,756	Lb	193,818	Cwt
% Change from Previous Estimate	NC	NC	↑ 1.7		↑ 1.7	
% Change from Previous Season	↓ 16.3	↓ 16.3	↑ 1.8		↓ 14.8	
Sugarbeets	1,162	1,151	32.2	Ton	37,040	Ton
% Change from Previous Estimate	NC	NC	↑ 3.9		↑ 3.8	
% Change from Previous Season	↓ 0.1	↑ 0.7	↑ 9.5		↑ 10.2	
Sugarcane	N/A	932	36.6	Ton	34,099	Ton
% Change from Previous Estimate	N/A	NC	↓ 0.5		↓ 0.6	
% Change from Previous Season	N/A	↓ 1.6	↓ 3.9		↓ 5.5	



Selected Upcoming Reports



November 19	Cattle on Feed
November 24	Cotton Ginnings Farm Labor
November 30	Agricultural Prices
December 1	Cotton System Fats & Oils Grain Crushings
December 9	Cotton Ginnings Crop Production County Estimates - Barley, Oats, Wheat

<https://www.nass.usda.gov/Publications/index.php>

**STAT
CHAT
SERIES**

Join @usda_nass using #StatChat to ask NASS's Lance Honig about the *Crop Production* report.



@usda_nass
#STATCHAT



**TUES
NOV 9
1PM ET**





All Reports Available At

www.nass.usda.gov

For Questions

(202) 720-2127

(800) 727-9540

nass@usda.gov