



Crop Production

Executive Summary

**Lance Honig, Chief
Crops Branch**



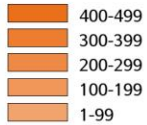
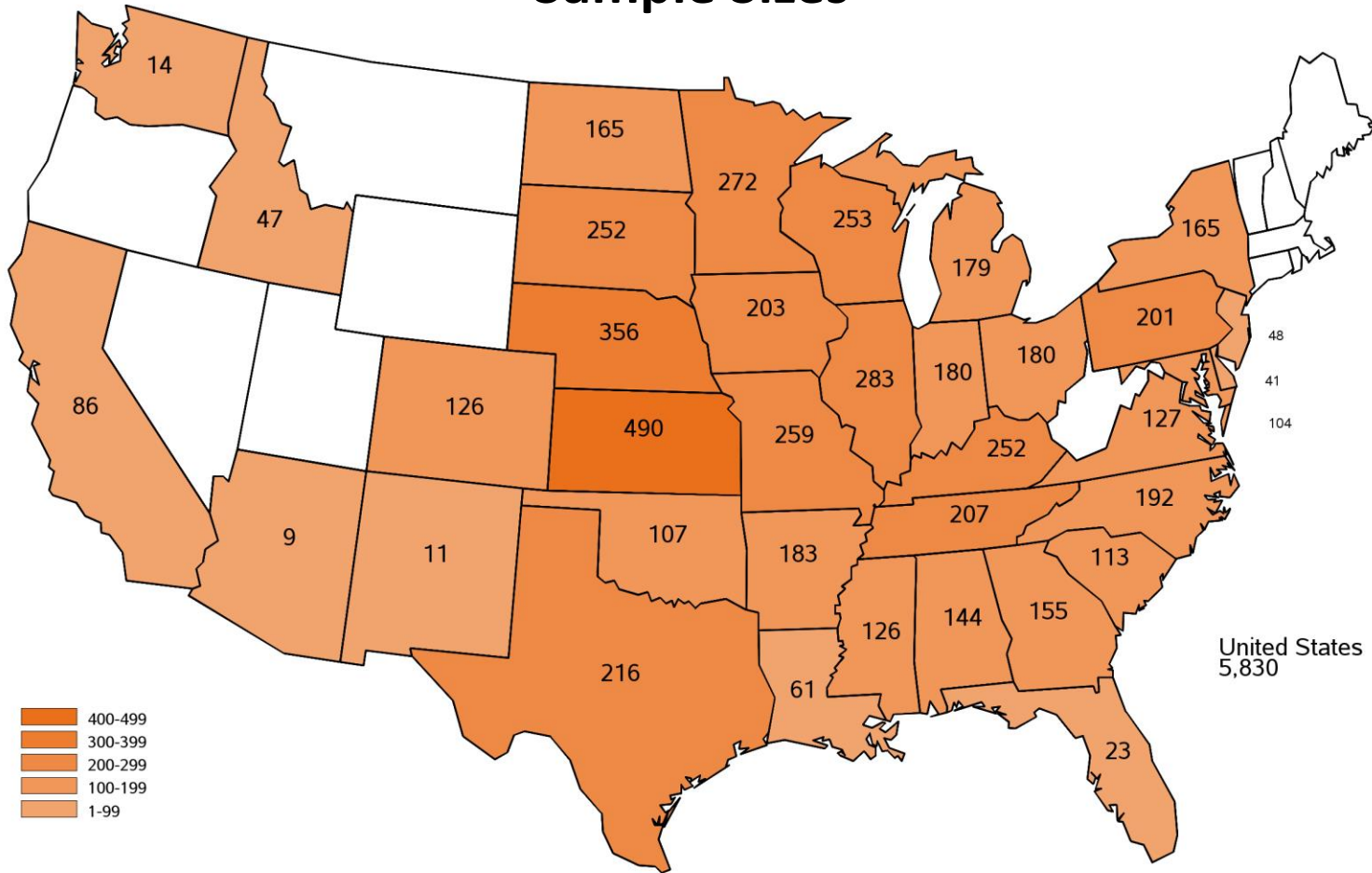
Data Sources



Operator Reported Survey	Ag Yield	Sample Size = 5,830	October 30 - November 6
Field Survey	Objective Yield Corn, Cotton, Soybeans	Sample Size = 3,930	October 25 - November 1
Remotely Sensed (Satellite)	Time Series 250 Meter MODIS Satellite Data	Focus Area Corn Belt	Imagery Through September 29

November 2023 Ag Yield Survey

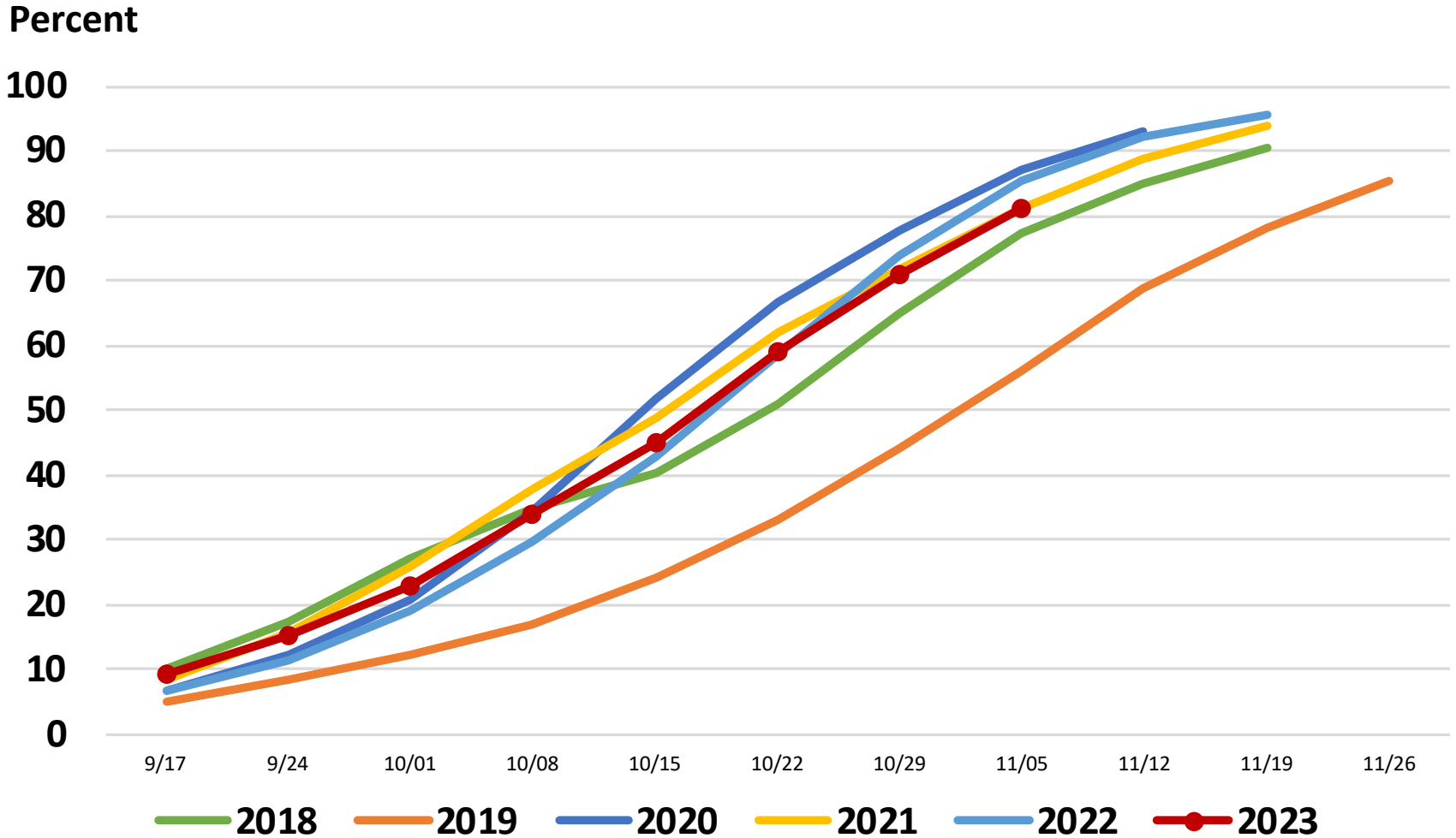
Sample Sizes





United States Corn Progress

Percent Harvested





November 2023 Corn Acreage, Yield, and Production

	Planted (1,000 Acres)		Harvested (1,000 Acres)		Yield (Bushels/Acre)		Production (1,000 Bushels)	
United States	94,868		87,096		174.9		15,234,285	
% Change from Previous Estimate	NC		NC		↑ 1.1		↑ 1.1	
% Change from Previous Season	↑ 7.1		↑ 10.1		↑ 0.9		↑ 11.1	

Top 5 States - By Production

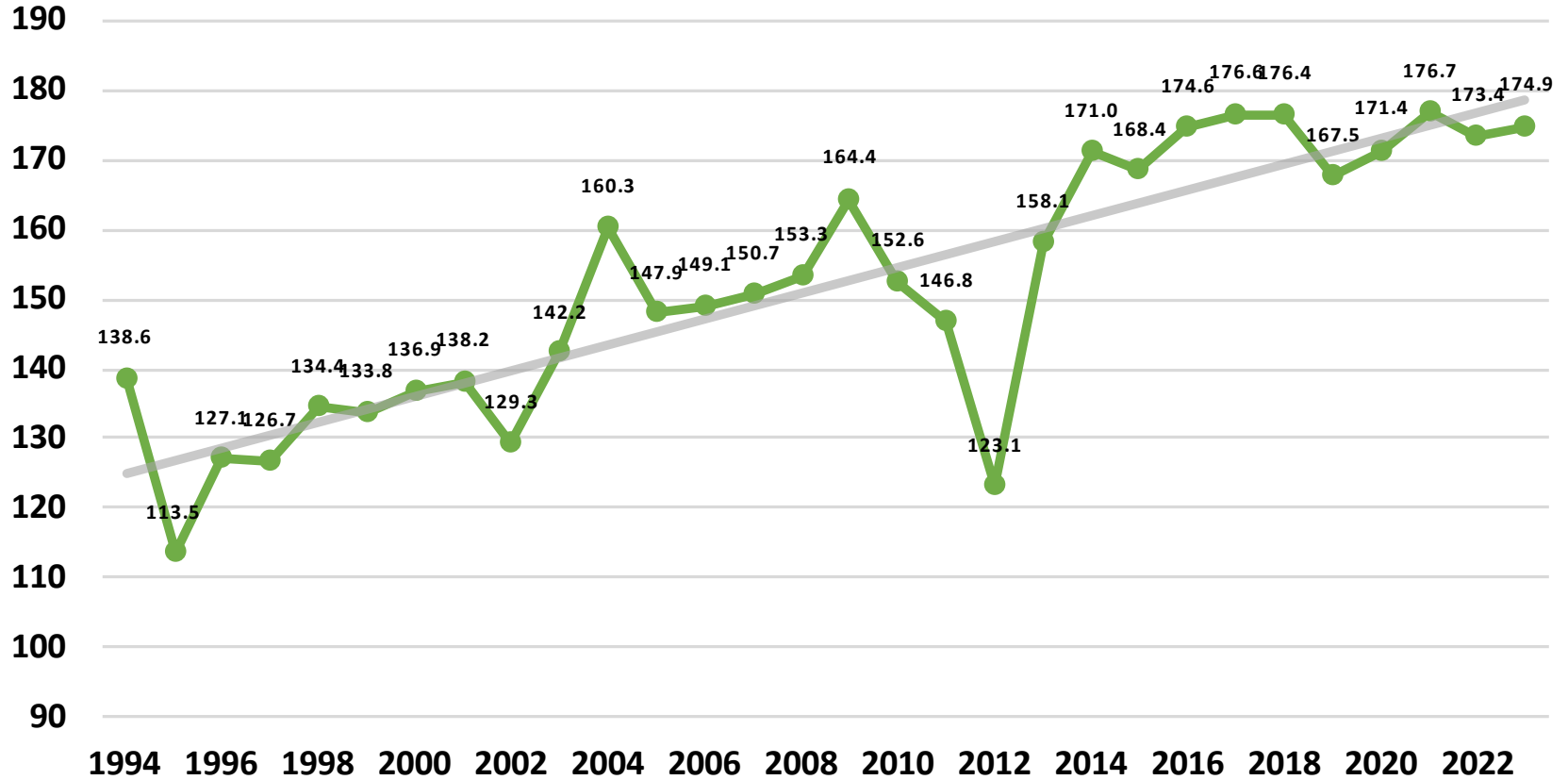
	Planted (1,000 Acres)		Harvested (1,000 Acres)		Yield (Bushels/Acre)		Production (1,000 Bushels)	
		% Δ PY		% Δ PY		% Δ PY		% Δ PY
Iowa	13,100	↑ 1.6	12,600	↑ 2.0	200	NC	2,520,000	↑ 2.0
Illinois	11,200	↑ 3.7	11,000	↑ 3.8	203	↓ 5.1	2,233,000	↓ 1.6
Nebraska	9,950	↑ 3.6	9,590	↑ 8.7	173	↑ 4.8	1,659,070	↑ 14.0
Minnesota	8,600	↑ 7.5	8,200	↑ 9.5	181	↓ 7.2	1,484,200	↑ 1.6
Indiana	5,500	↑ 4.8	5,380	↑ 4.9	200	↑ 5.3	1,076,000	↑ 10.4



November 2023 Corn Yield United States

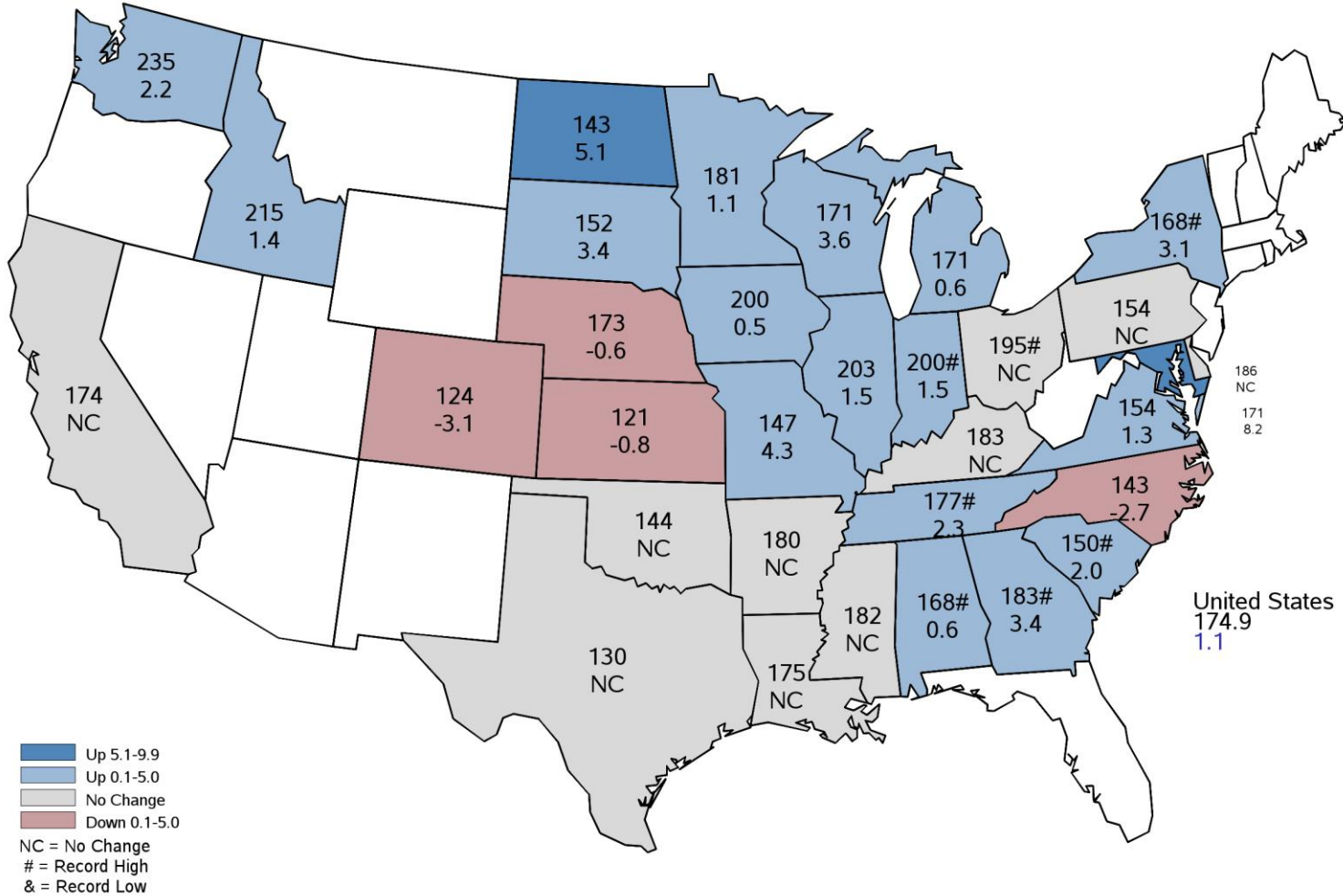


Bushels per Acre



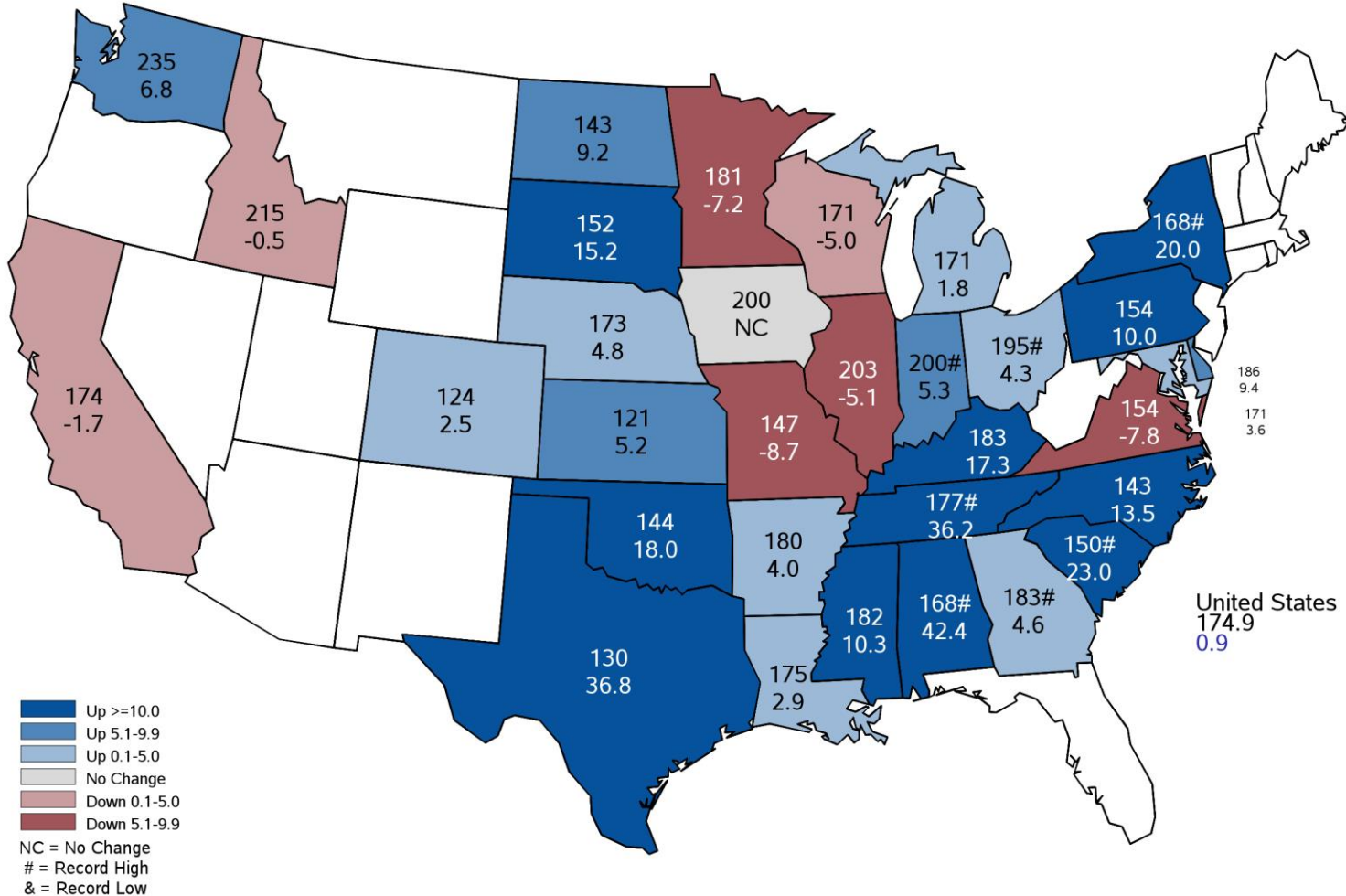
November 2023 Corn Yield

Bushels and Percent Change from Previous Month



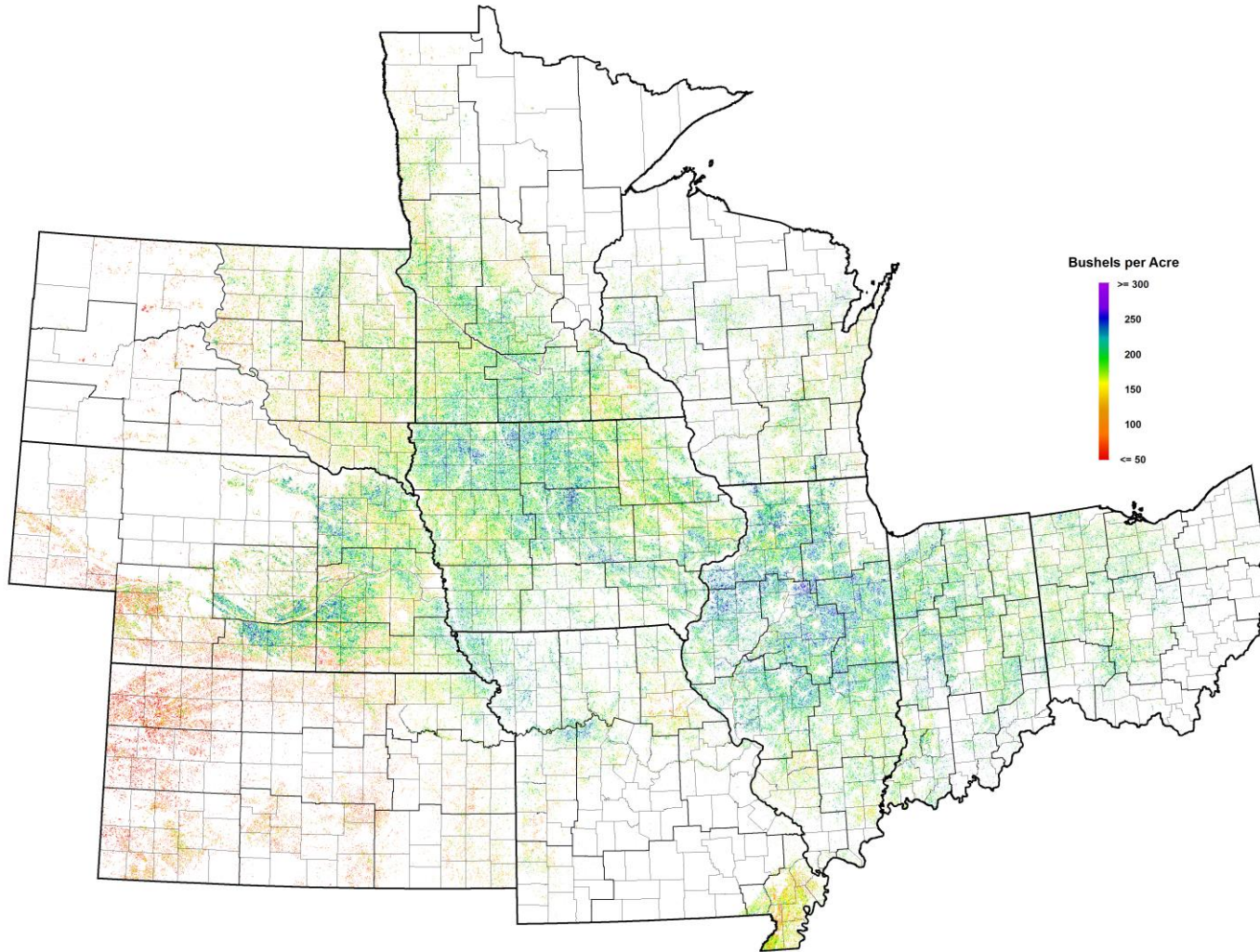
November 2023 Corn Yield

Bushels and Percent Change from Previous Year



November 2023 Corn

NASA Terra MODIS Modeled Yield

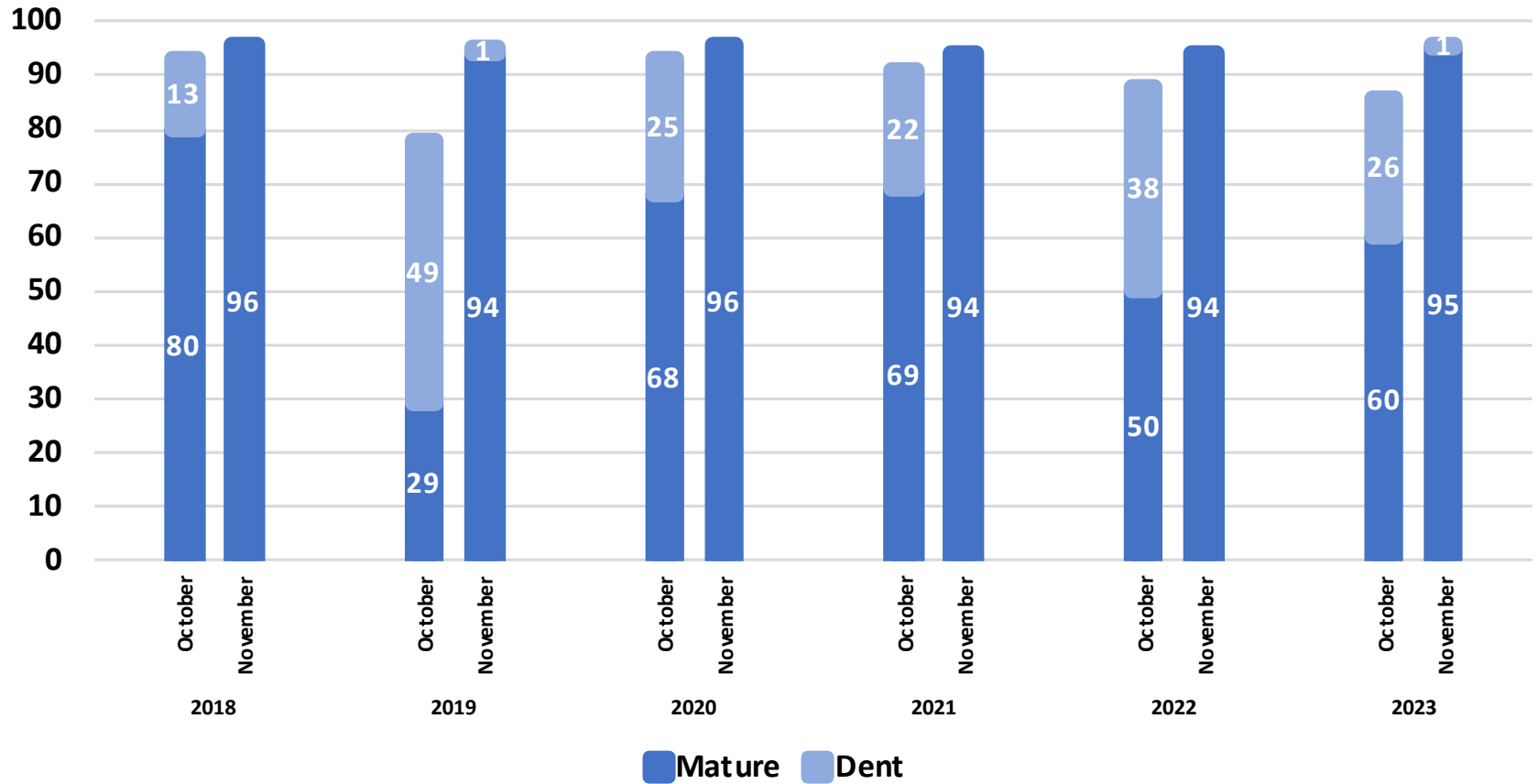




November 2023 Corn Objective Yield

Percent of Samples Processed in the Lab

Percent

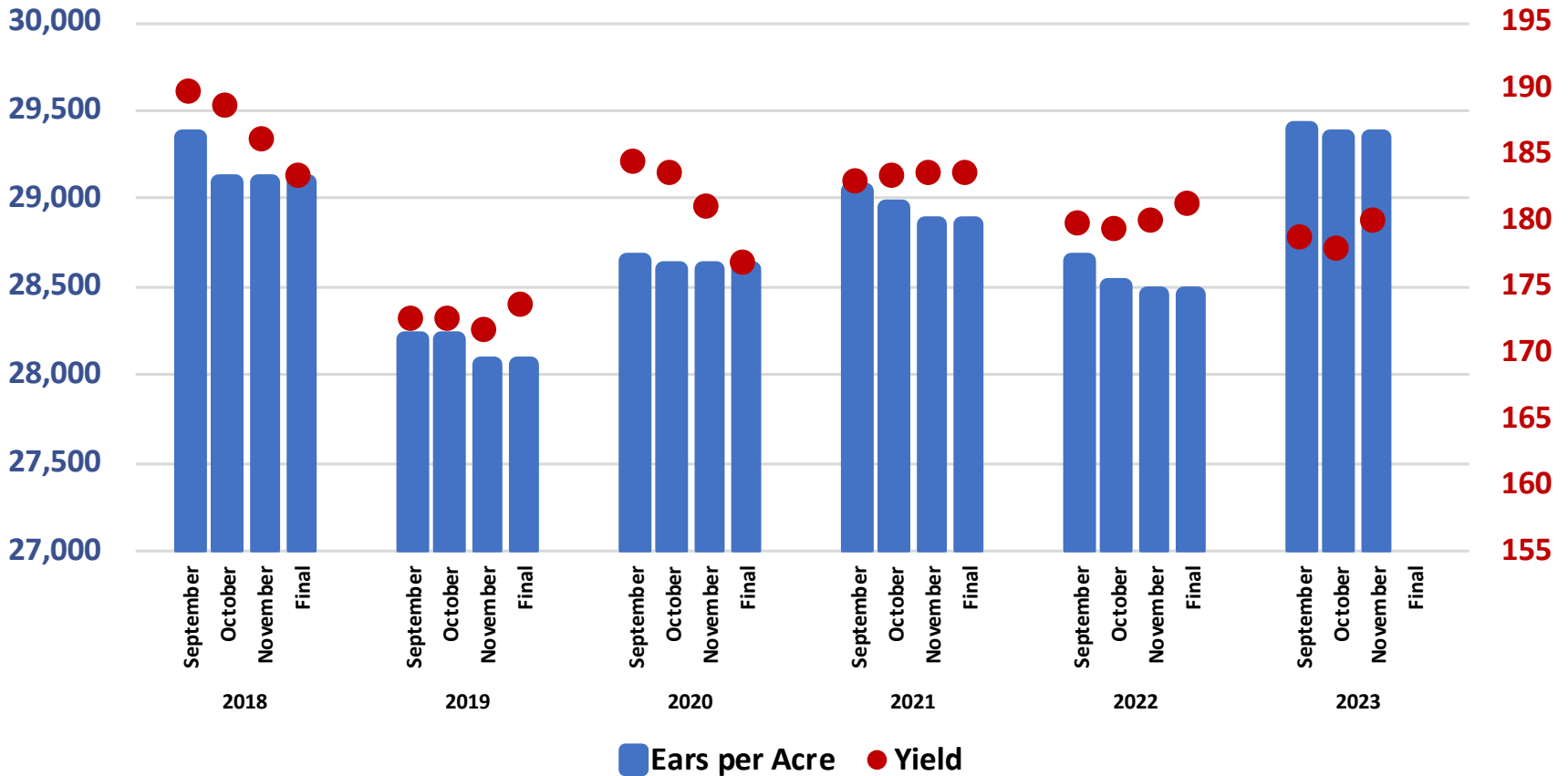


November 2023 Corn Objective Yield

Ears per Acre and Yield for 10 State Region

Ears per Acre

Bushels per Acre

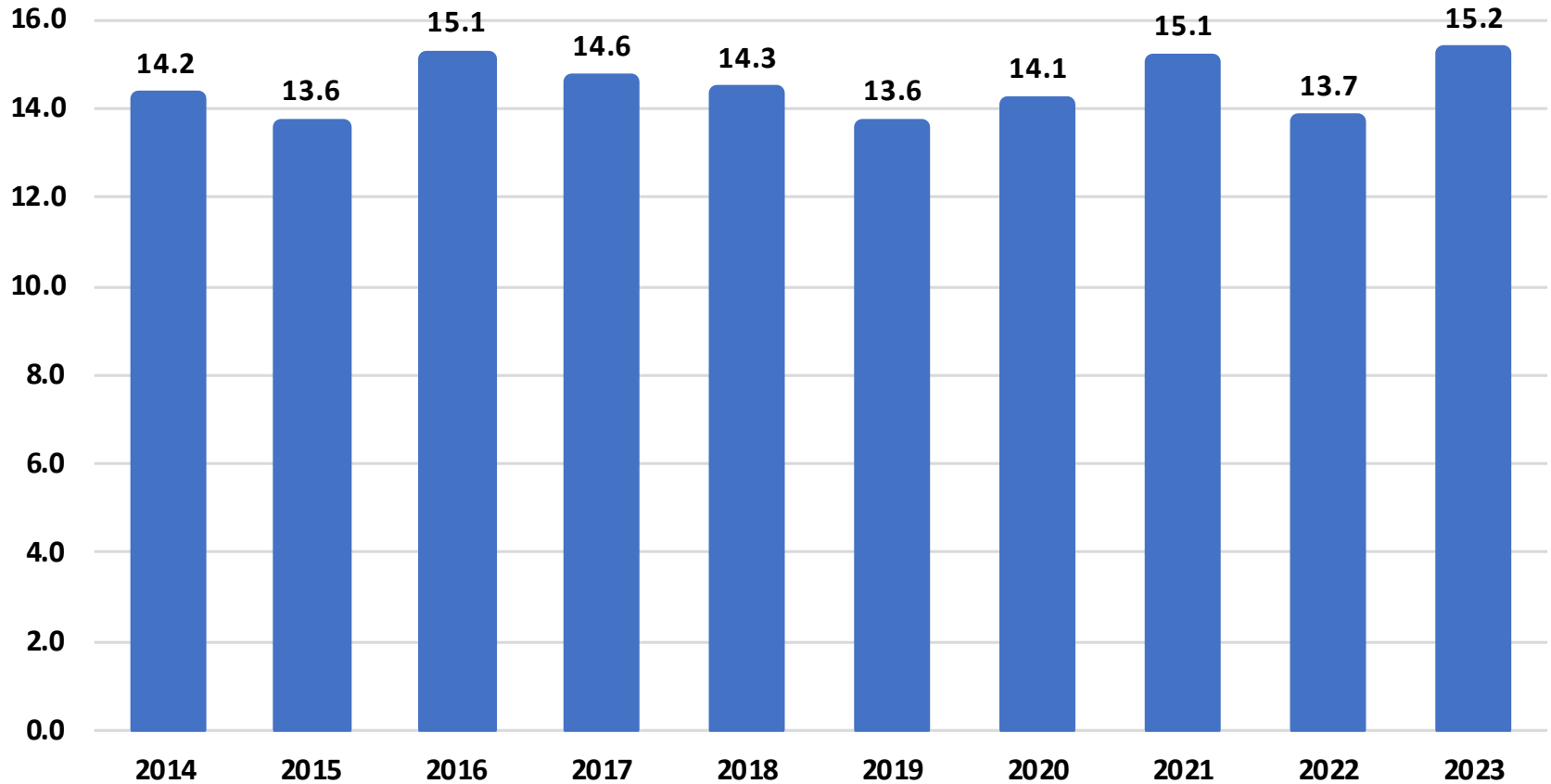




November 2023 Corn Production United States



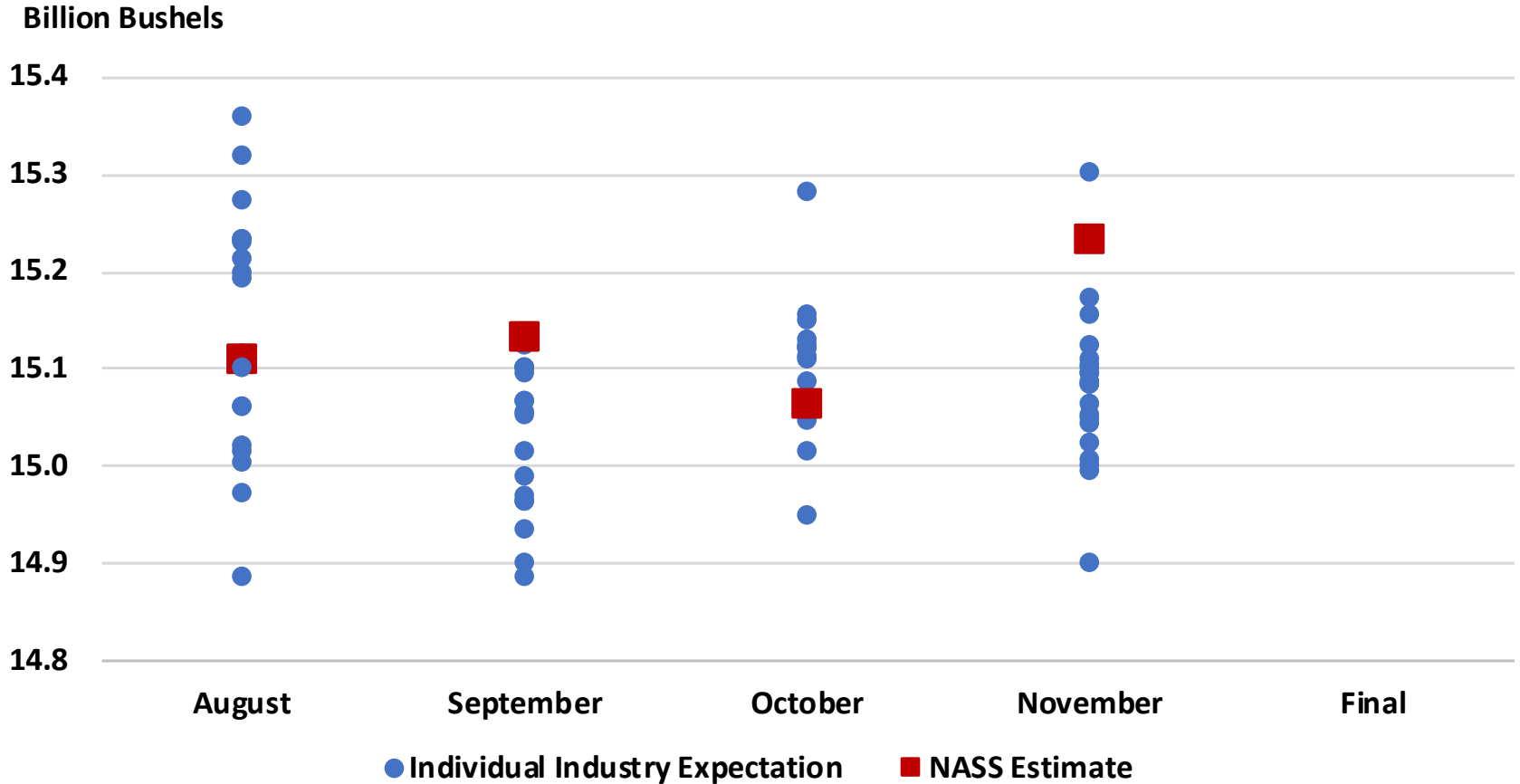
Billion Bushels





2023 U.S. Corn Production

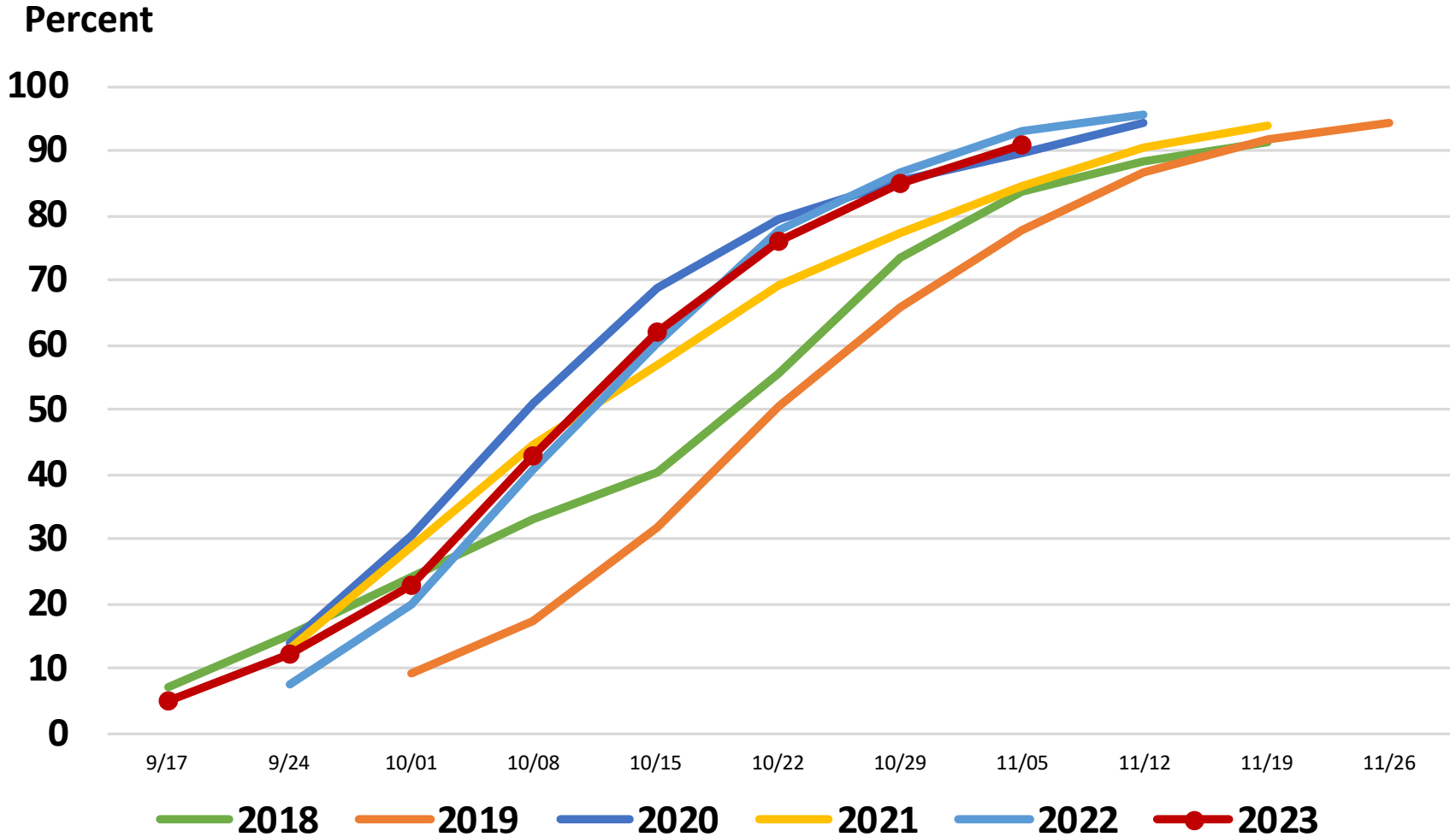
Industry Expectations vs NASS





United States Soybean Progress

Percent Harvested





November 2023 Soybeans

Acreage, Yield, and Production



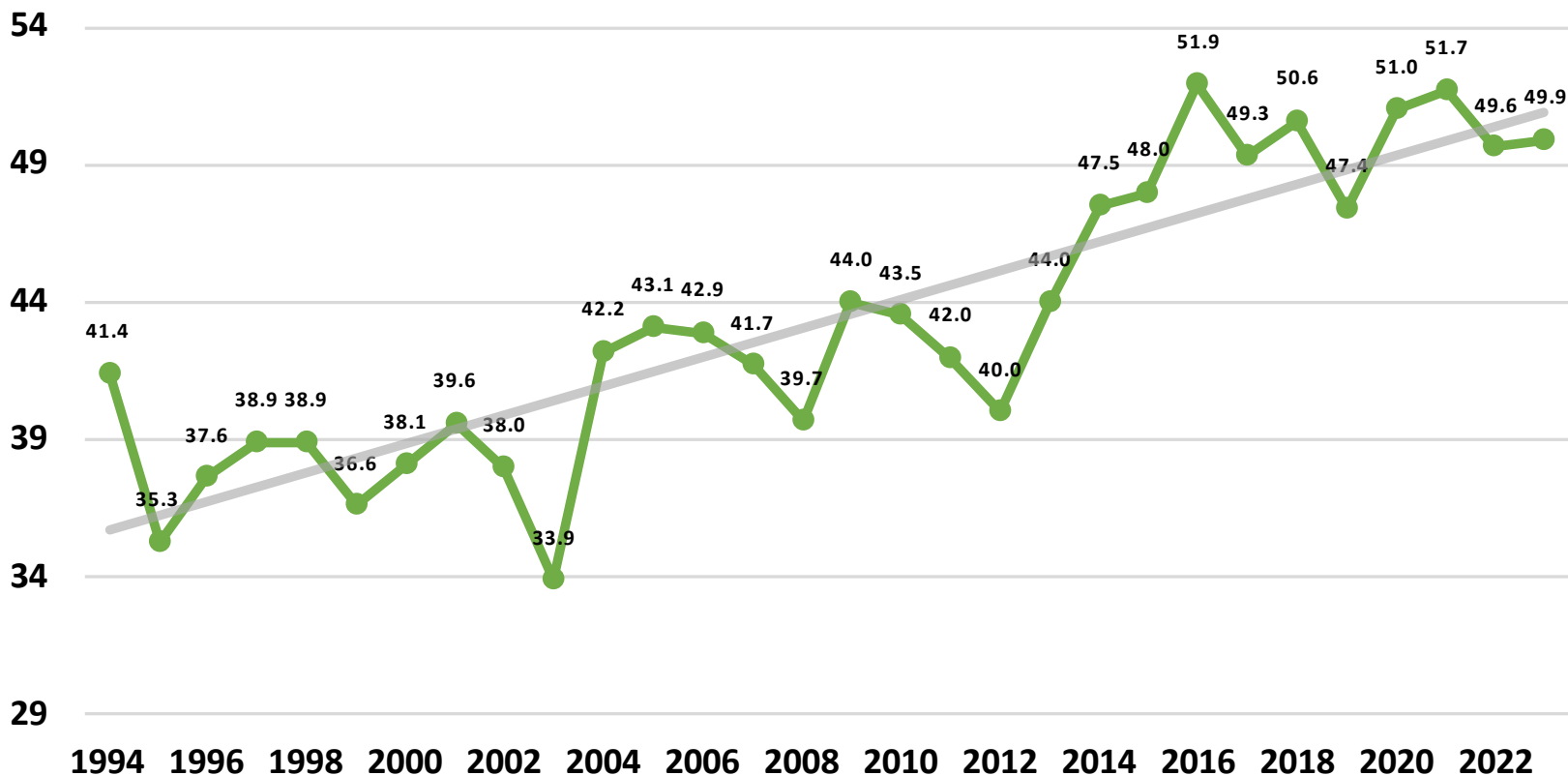
	Planted (1,000 Acres)	Harvested (1,000 Acres)	Yield (Bushels/Acre)	Production (1,000 Bushels)
United States	83,600	82,791	49.9	4,129,449
% Change from Previous Estimate	NC	NC	↑ 0.6	↑ 0.6
% Change from Previous Season	↓ 4.4	↓ 3.9	↑ 0.6	↓ 3.3

Top 5 States - By Production

	Planted		Harvested		Yield		Production	
	(1,000 Acres)	% Δ PY	(1,000 Acres)	% Δ PY	(Bushels/Acre)	% Δ PY	(1,000 Bushels)	% Δ PY
Illinois	10,350	↓ 4.2	10,300	↓ 4.2	61.0	↓ 3.2	628,300	↓ 7.2
Iowa	9,950	↓ 1.5	9,870	↓ 1.6	58.0	↓ 0.9	572,460	↓ 2.4
Minnesota	7,350	↓ 1.3	7,280	↓ 1.5	48.0	↓ 4.0	349,440	↓ 5.4
Indiana	5,500	↓ 6.0	5,480	↓ 6.0	61.0	↑ 6.1	334,280	↓ 0.3
Ohio	4,750	↓ 6.9	4,730	↓ 6.9	58.0	↑ 4.5	274,340	↓ 2.7

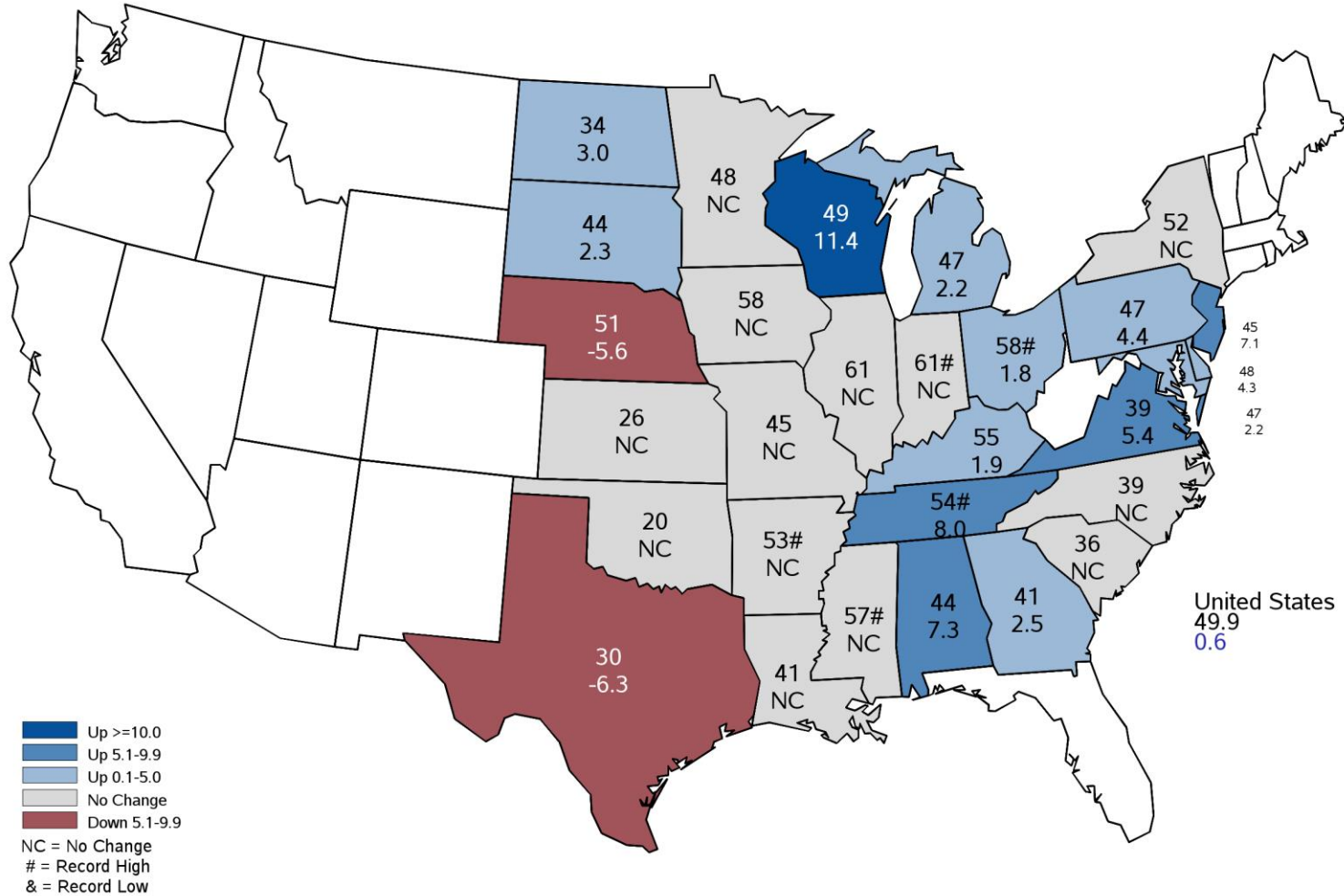
November 2023 Soybean Yield United States

Bushels per Acre



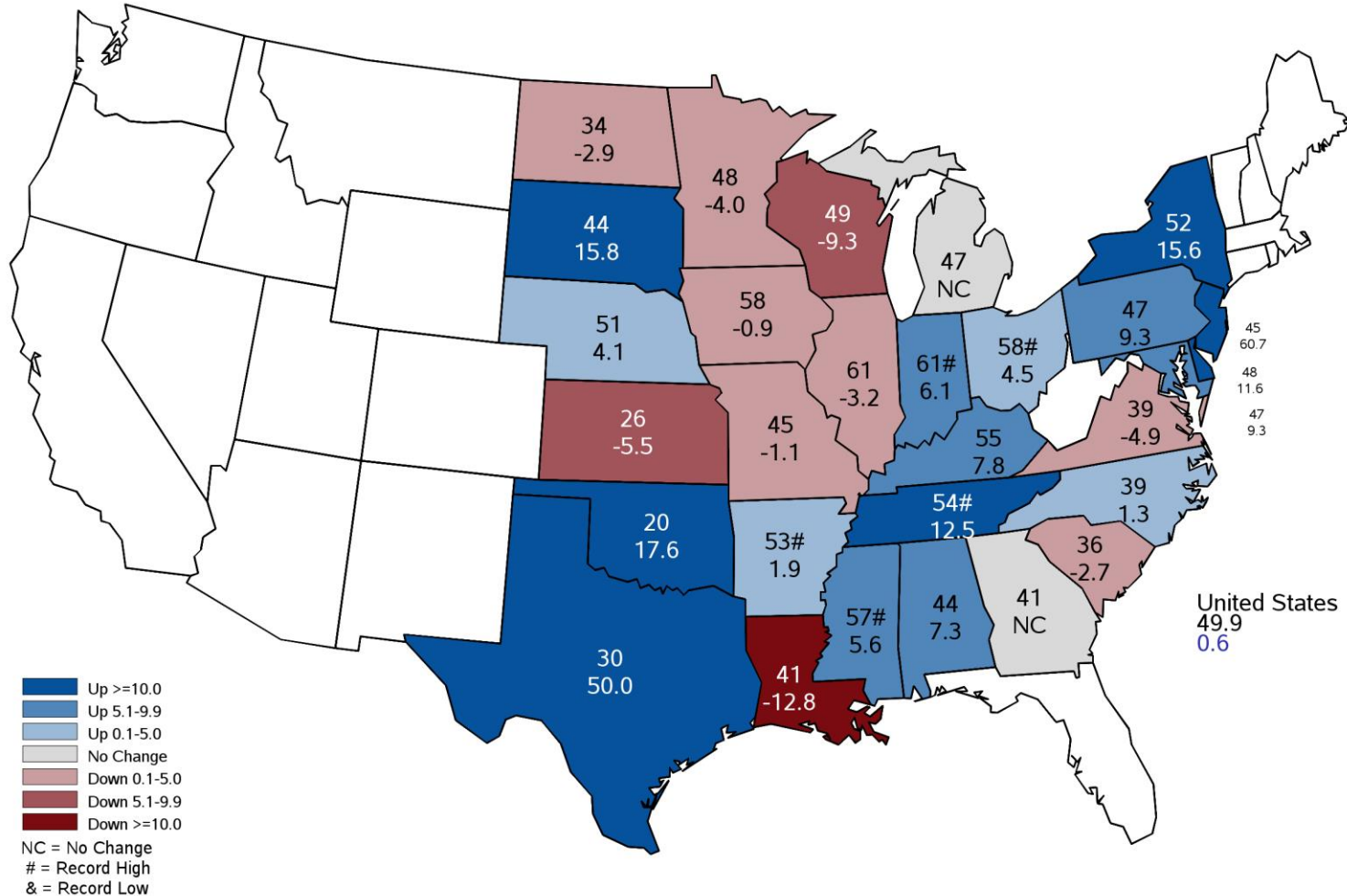
November 2023 Soybean Yield

Bushels and Percent Change from Previous Month



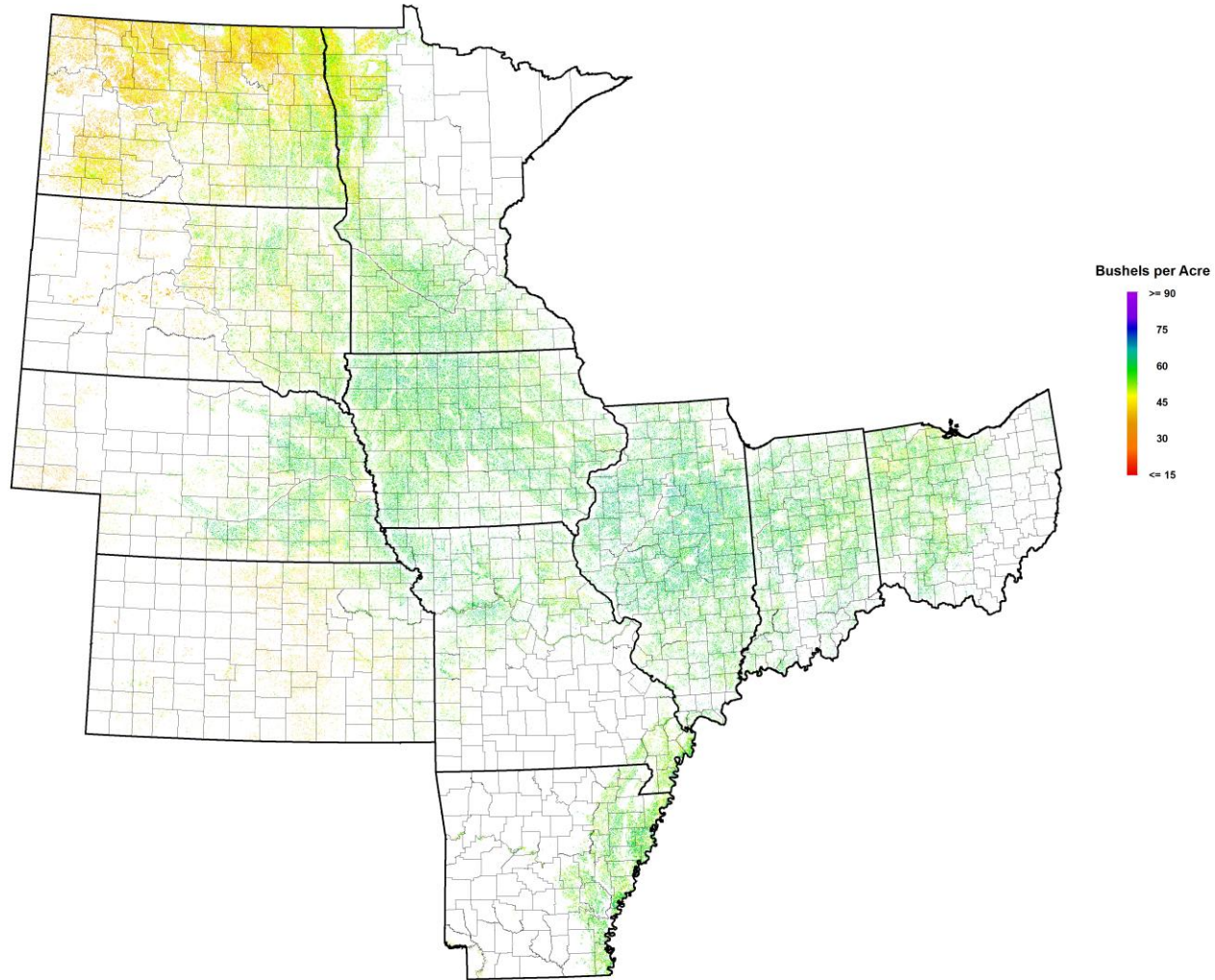
November 2023 Soybean Yield

Bushels and Percent Change from Previous Year



November 2023 Soybeans

NASA Terra MODIS Modeled Yield



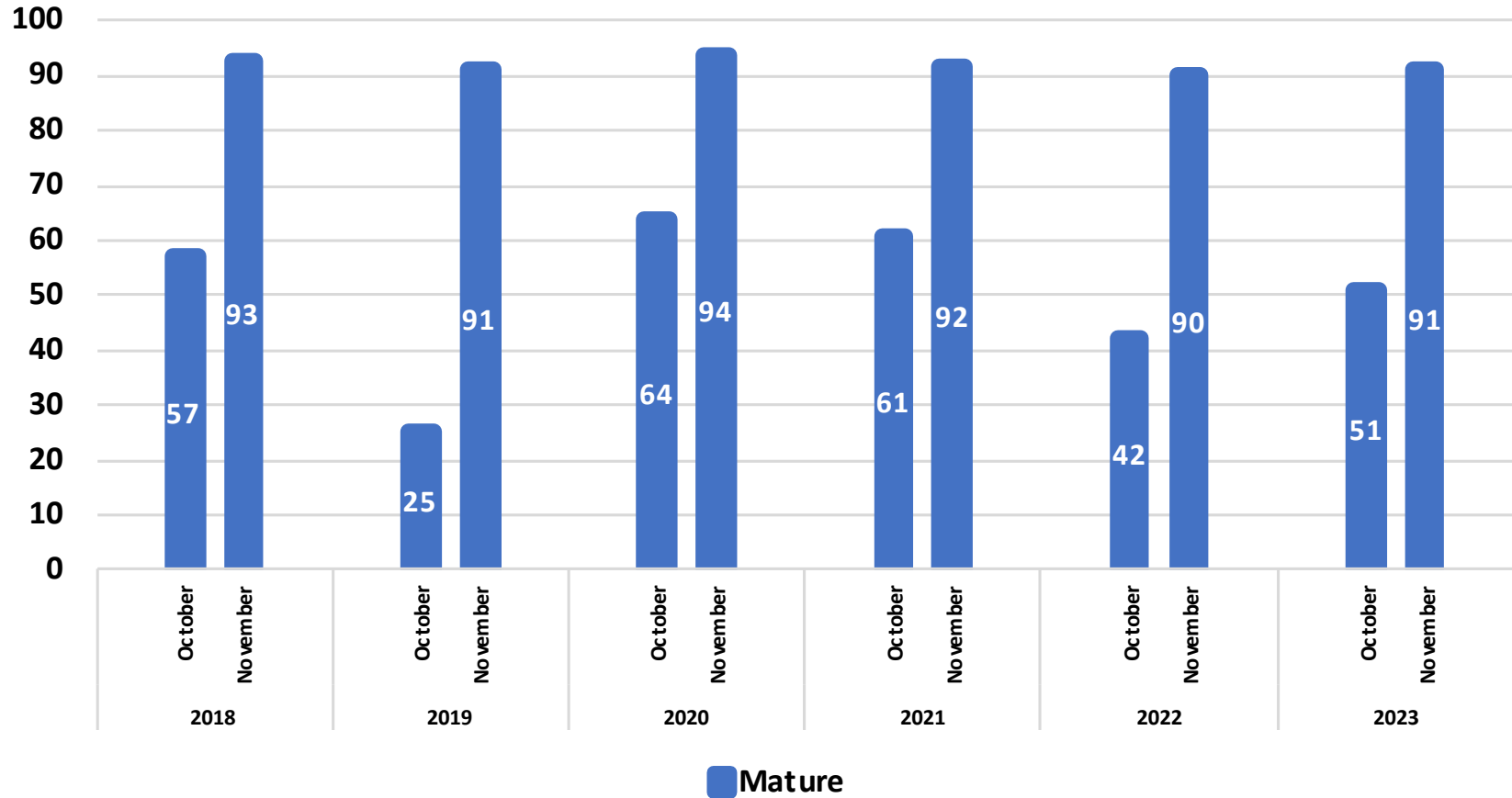


November 2023 Soybean Objective Yield

Percent of Samples Processed in the Lab



Percent



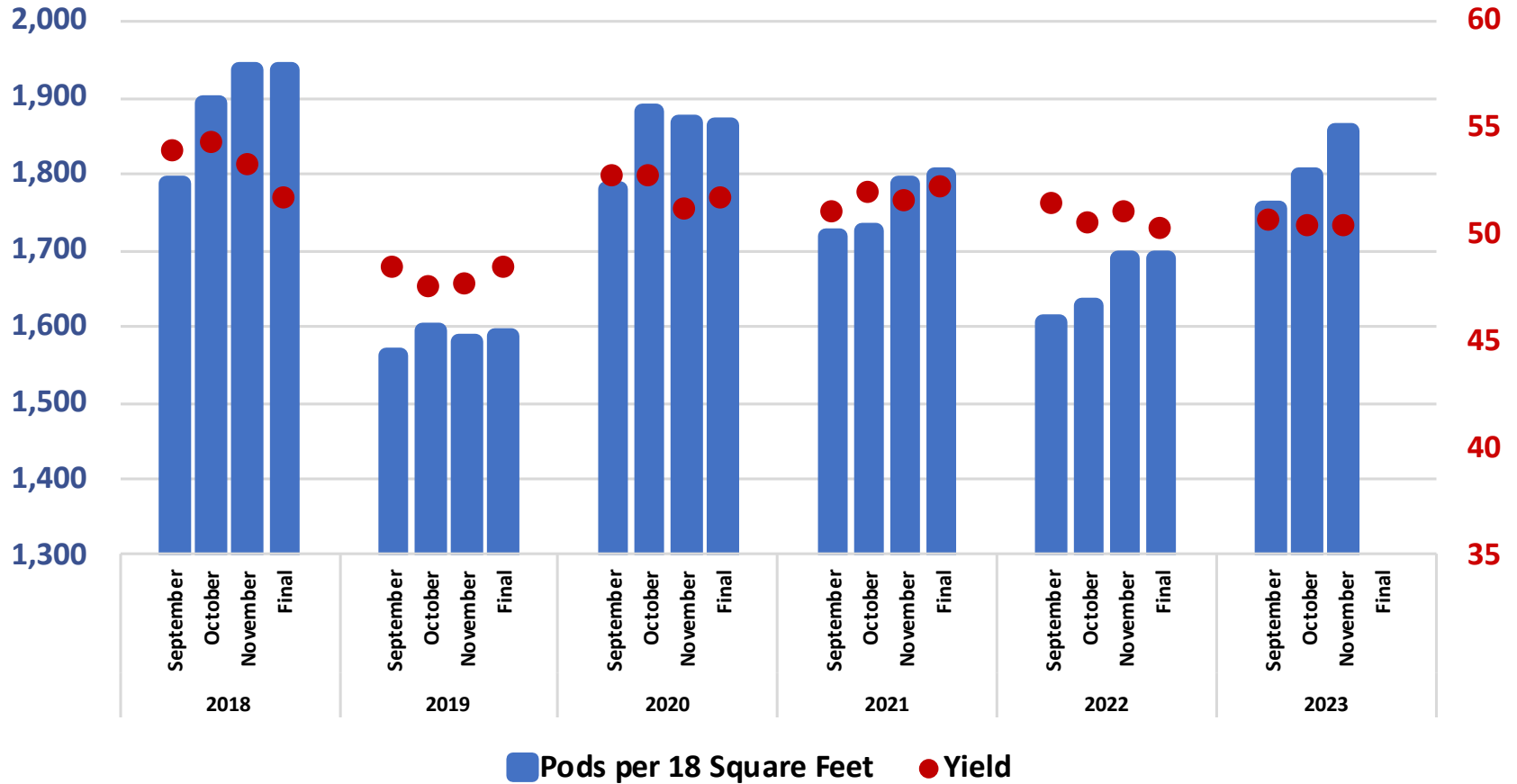


November 2023 Soybean Objective Yield

Pods per 18 Square Feet and Yield for 11 State Region

Pods per 18 Square Feet

Bushels per Acre

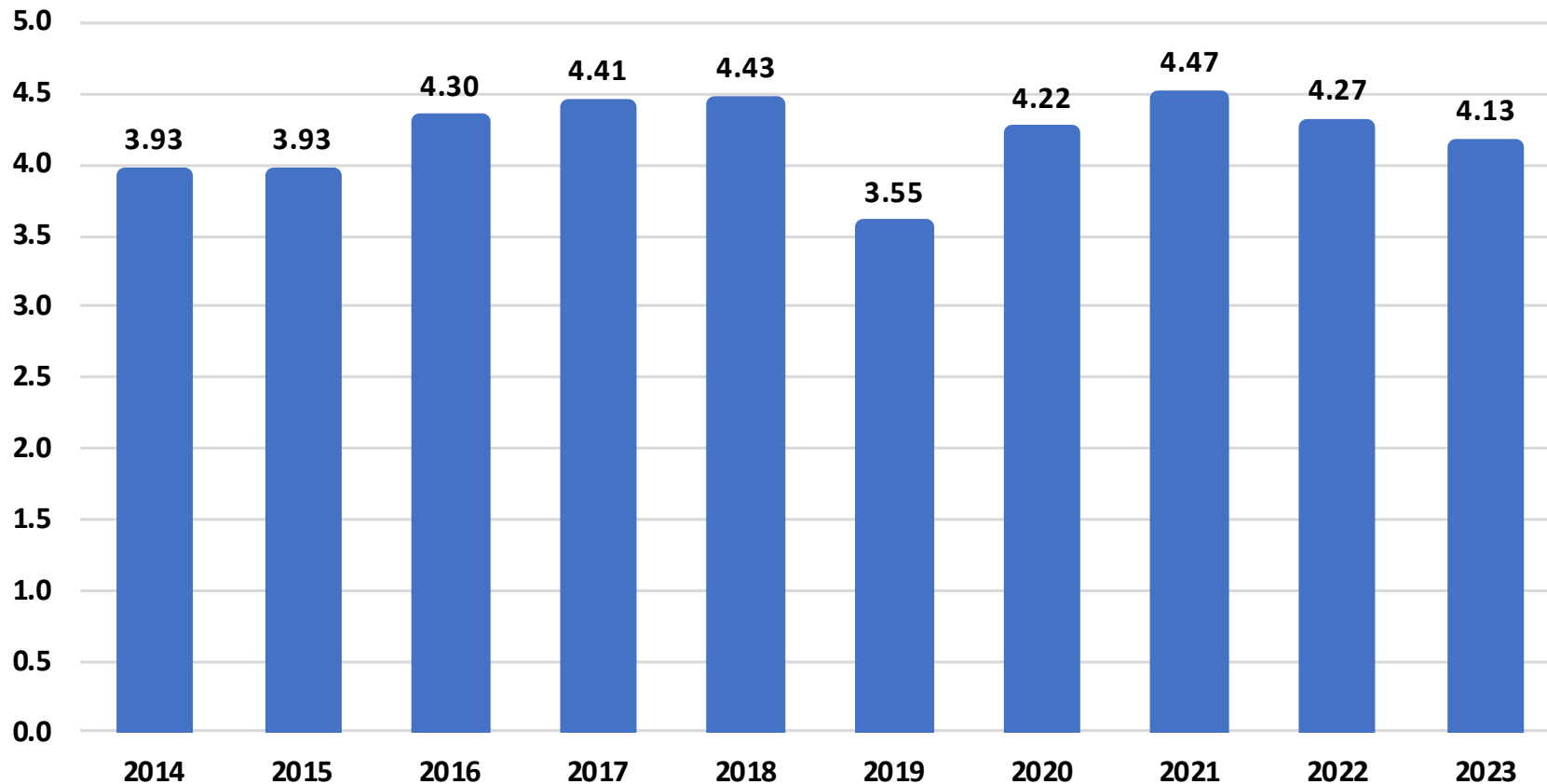




November 2023 Soybean Production United States



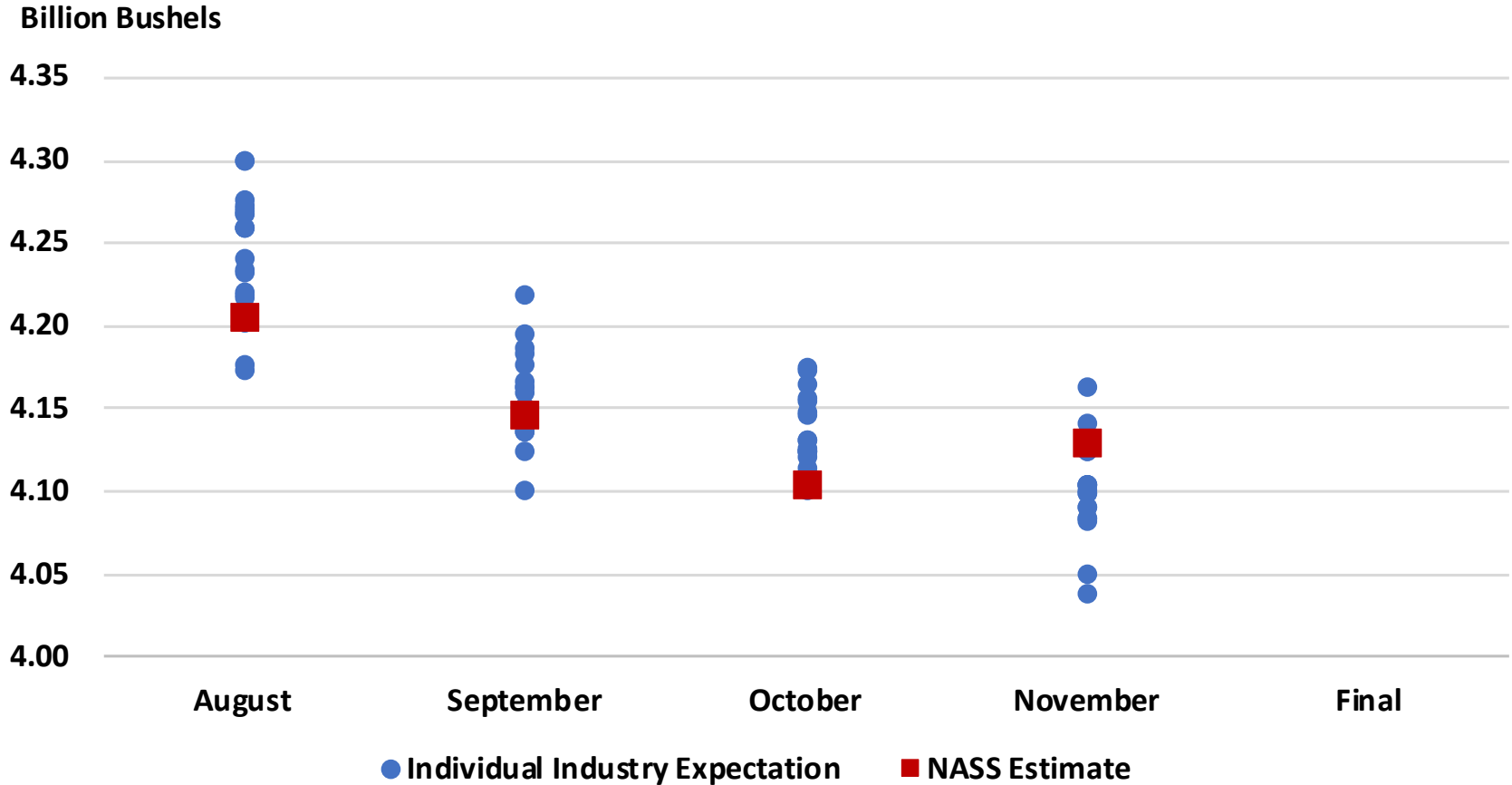
Billion Bushels





2023 U.S. Soybean Production

Industry Expectations vs NASS



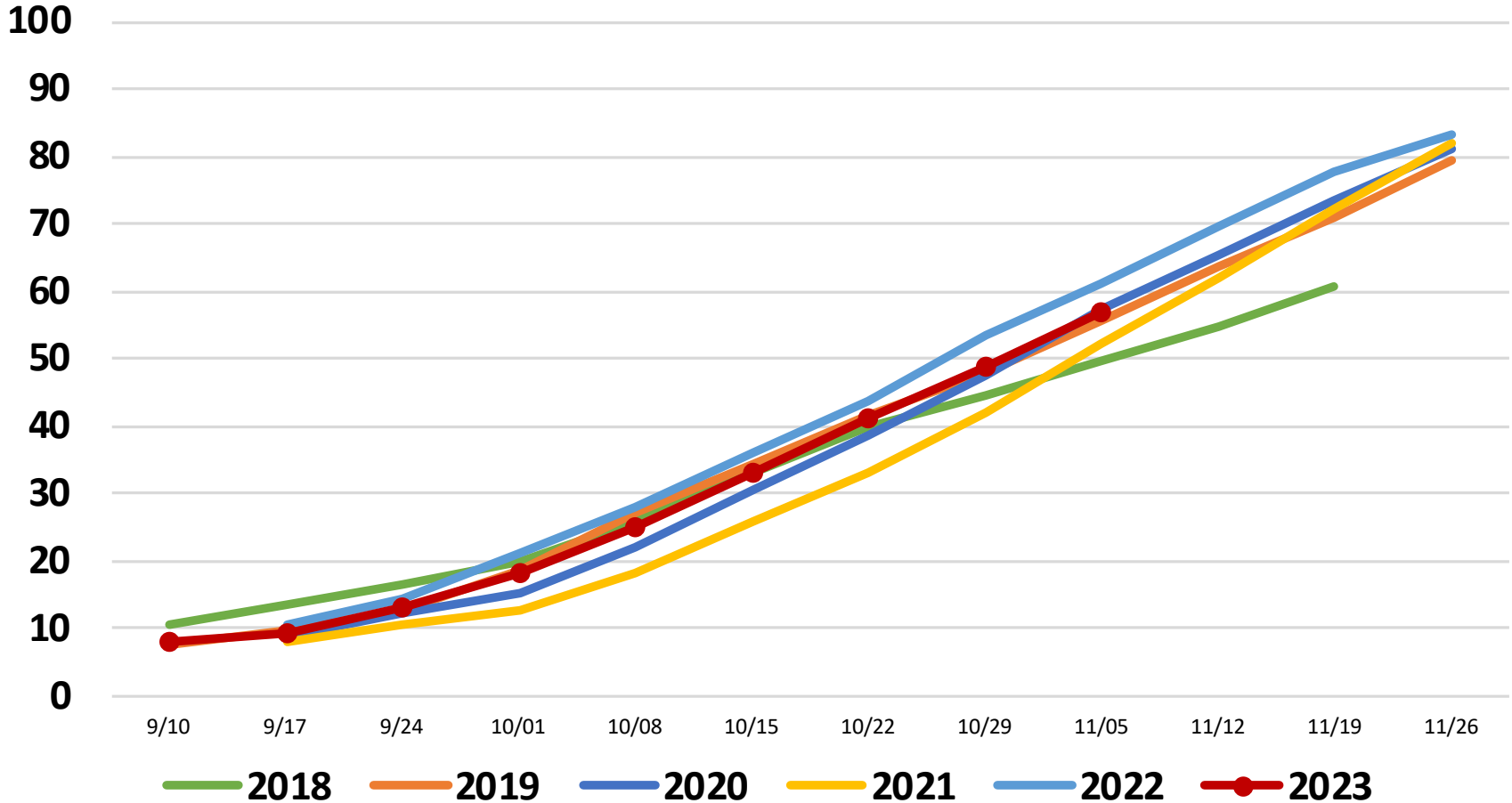


United States Cotton Progress

Percent Harvested



Percent





November 2023 Cotton Acreage, Yield, and Production



	Planted (1,000 Acres)	Harvested (1,000 Acres)	Yield (Pounds/Acre)	Production (1,000 Bales)
United States	10,233	8,021	783	13,090
% Change from Previous Estimate	NC	NC	↑ 2.1	↑ 2.1
% Change from Previous Season	↓ 25.6	↑ 9.8	↓ 17.6	↓ 9.5

Top 5 States - By Production

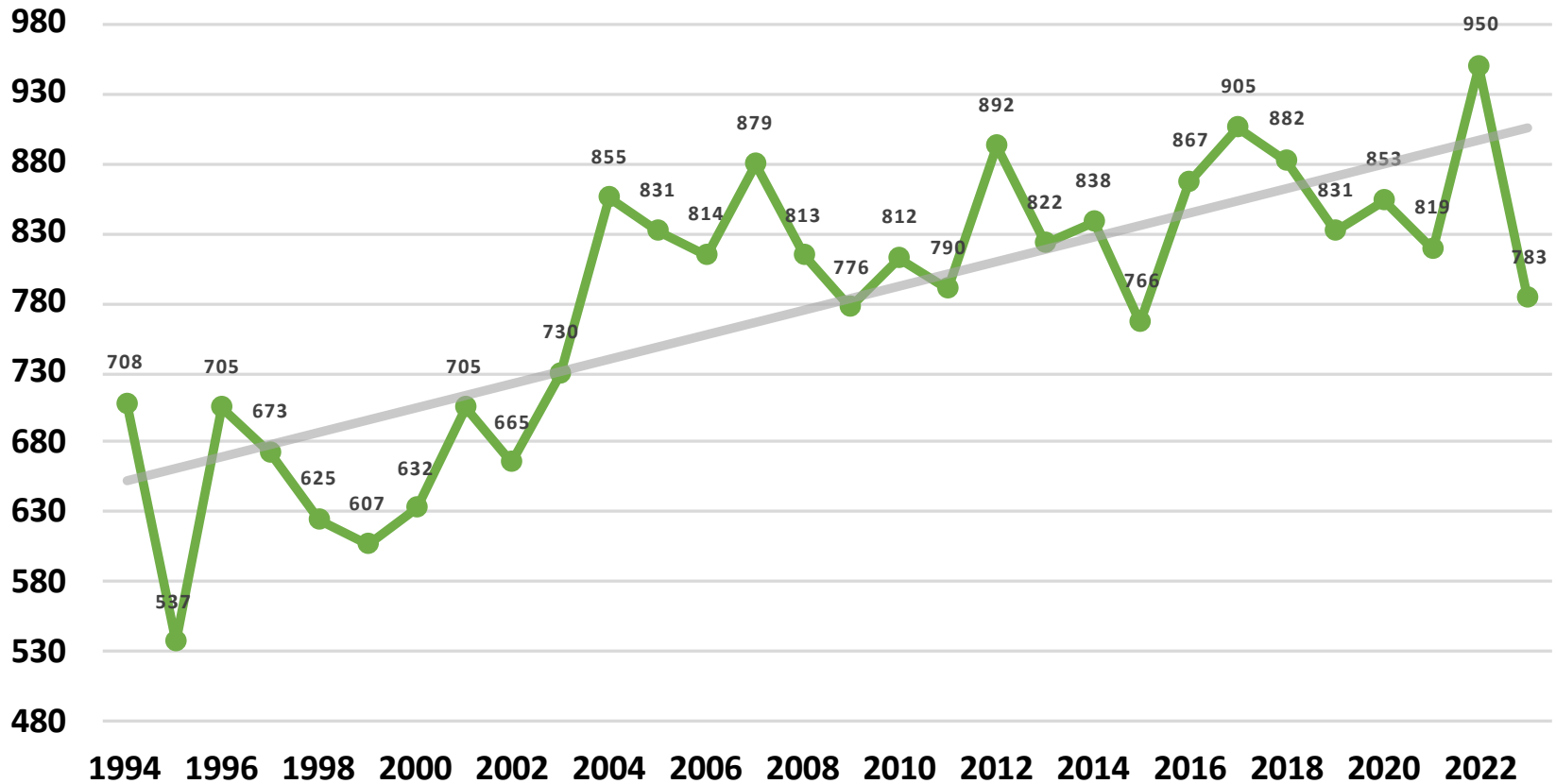
	Planted		Harvested		Yield		Production	
	(1,000 Acres)	% Δ PY	(1,000 Acres)	% Δ PY	(Pounds/Acre)	% Δ PY	(1,000 Bales)	% Δ PY
Texas	5,579	↓ 29.2	3,575	↑ 76.2	489.0	↓ 33.4	3,639	↑ 17.2
Georgia	1,110	↓ 14.0	1,100	↓ 13.4	1,025.0	↑ 2.3	2,350	↓ 11.3
Arkansas	510	↓ 20.3	505	↓ 19.8	1,236.0	↑ 4.8	1,300	↓ 16.0
Mississippi	400	↓ 24.5	395	↓ 24.8	1,033.0	↓ 4.7	850	↓ 28.3
Missouri	335	↓ 6.9	330	↓ 2.9	1,229.0	↓ 0.9	845	↓ 3.8



November 2023 Cotton Yield United States

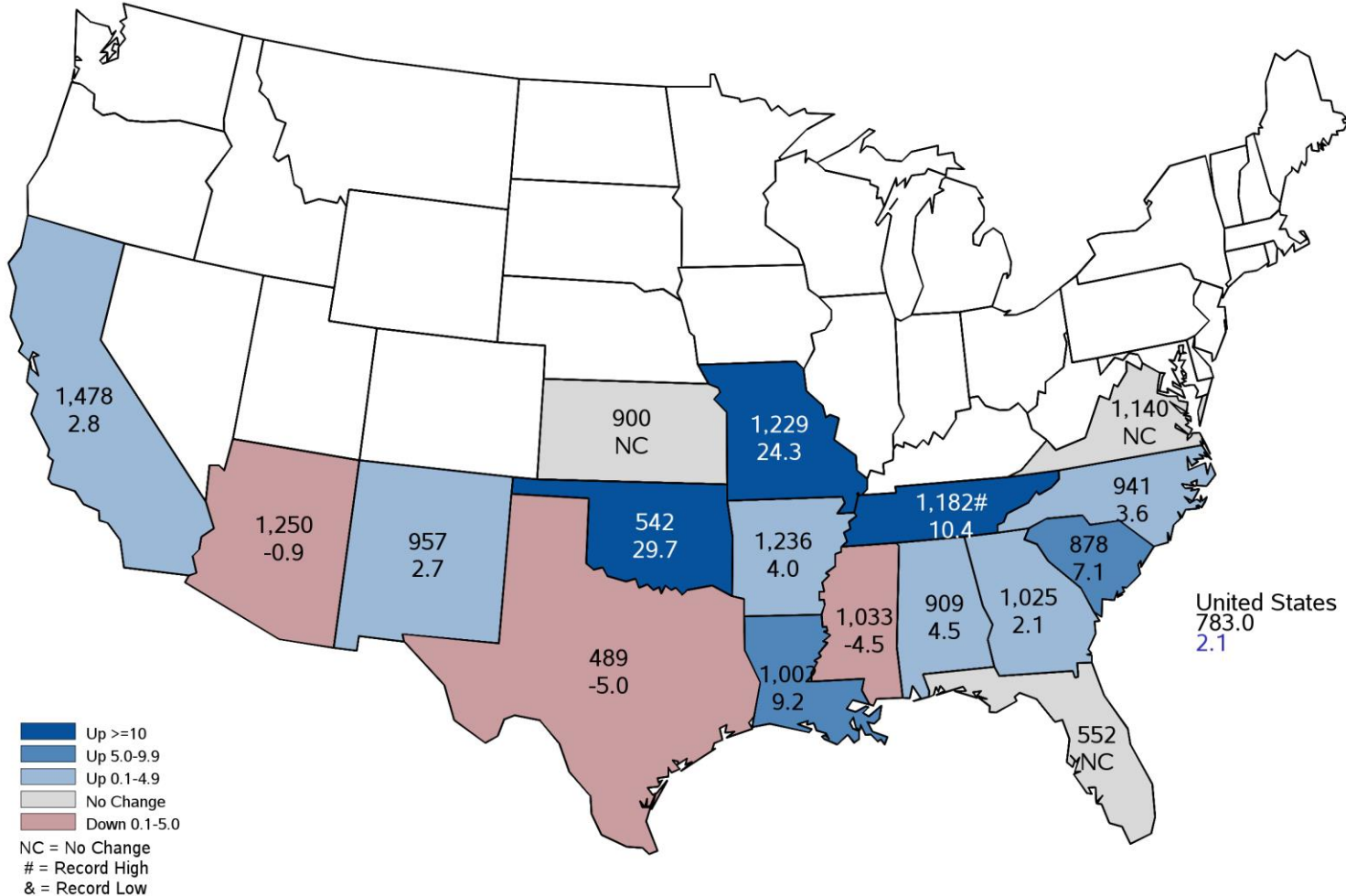


Pounds per Acre



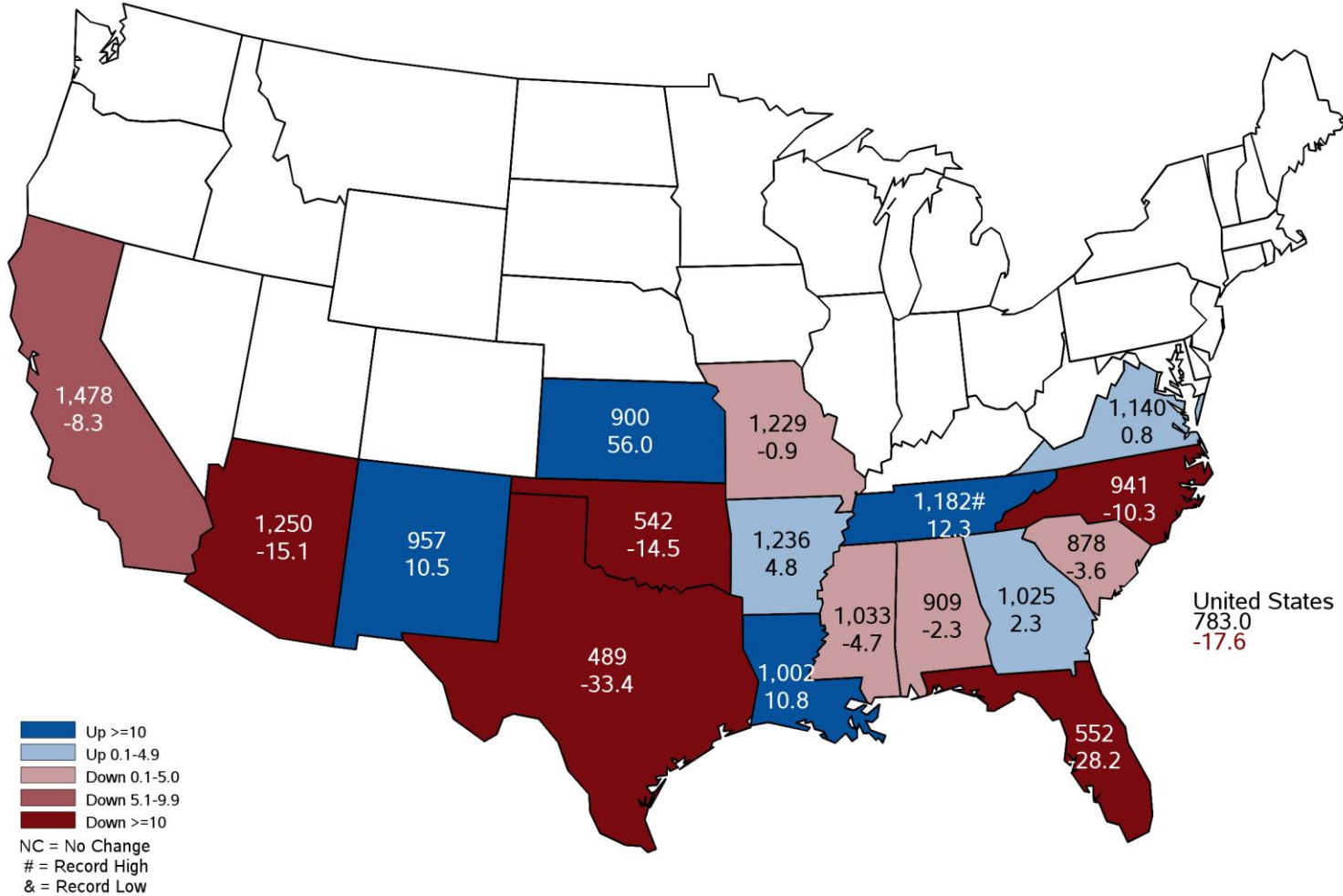
November 2023 Cotton Yield

Pounds and Percent Change from Previous Month



November 2023 Cotton Yield

Pounds and Percent Change from Previous Year

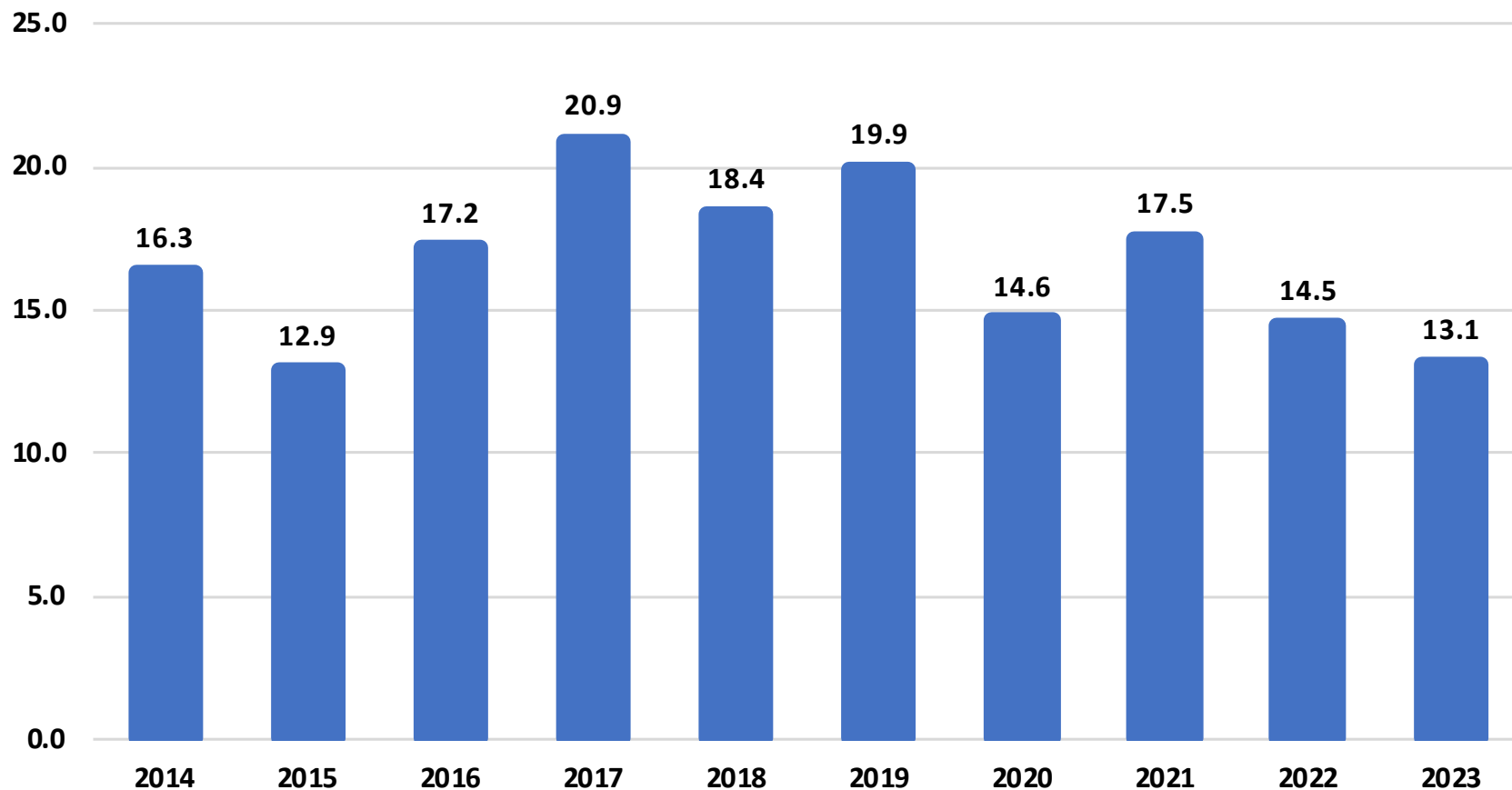




November 2023 Cotton Production United States



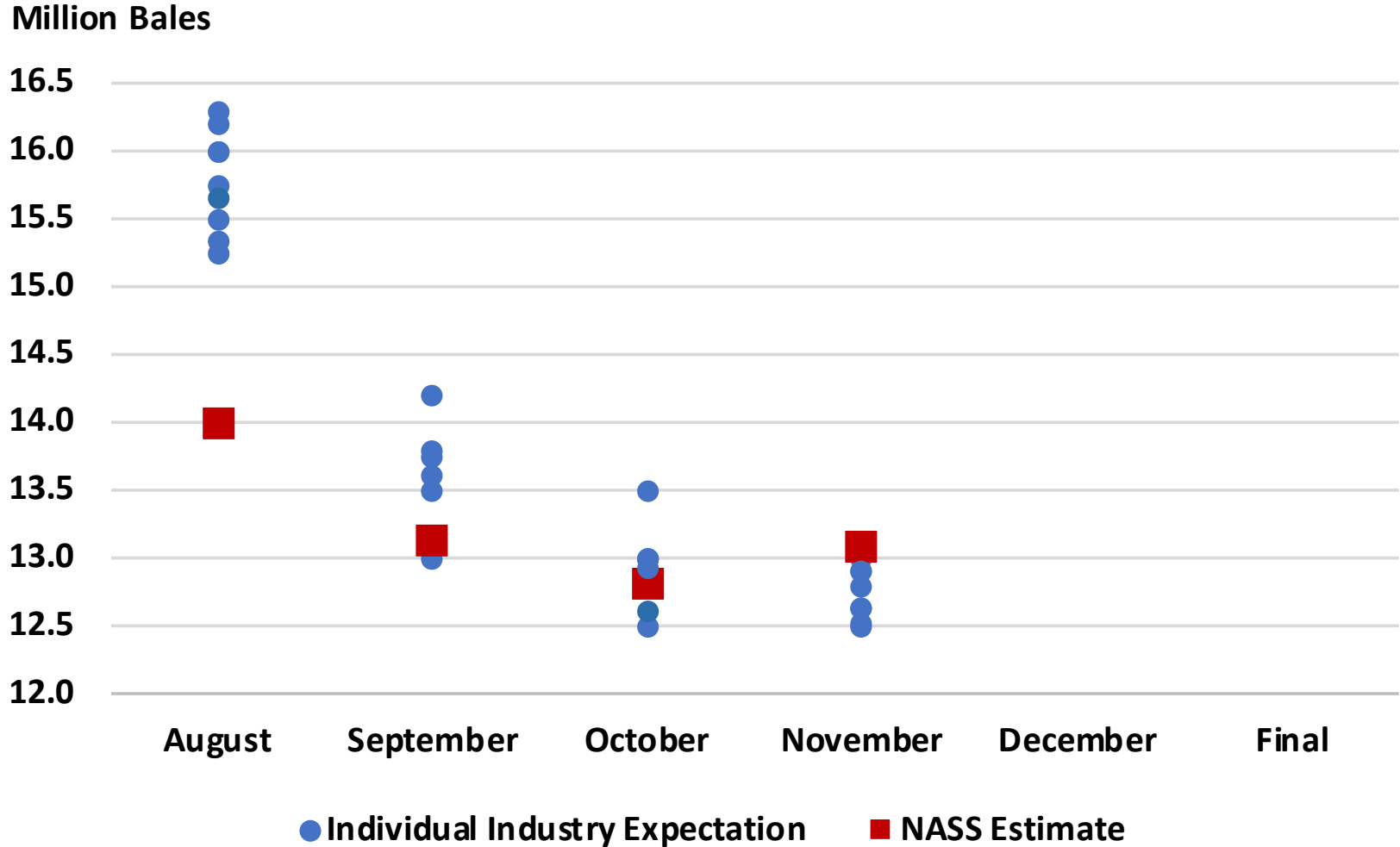
Million Bales





2023 U.S. Cotton Production

Industry Expectations vs NASS





November 2023 Field Crops

Acreage, Yield, and Production



	Planted (1,000 Acres)	Harvested (1,000 Acres)	Yield (Units per Acre)	Unit	Production (1,000 Units)	Unit
Peanuts	1,650	1,600	3,740	Lb	5,983,160	Lb
% Change from Previous Estimate	NC	NC	↓ 4.2		↓ 4.2	
% Change from Previous Season	↑ 13.8	↑ 15.7	↓ 6.7		↑ 7.9	
Potatoes	964	960	452	Cwt	434,224	Cwt
% Change from Previous Estimate	↑ 1.6	↑ 1.9	N/A		N/A	
% Change from Previous Season	↑ 5.2	↑ 5.3	↑ 3.2		↑ 8.9	
Rice	2,897	2,850	7,707	Lb	219,663	Cwt
% Change from Previous Estimate	NC	NC	↓ 0.4		↓ 0.4	
% Change from Previous Season	↑ 30.4	↑ 31.2	↑ 4.4		↑ 37.0	
Sorghum	7,180	6,260	51.4	Bu	321,820	Bu
% Change from Previous Estimate	NC	NC	↓ 10.5		↓ 10.5	
% Change from Previous Season	↑ 13.5	↑ 37.0	↑ 25.1		↑ 71.4	
Sugarbeets	1,132	1,119	31.7	Ton	35,508	Ton
% Change from Previous Estimate	NC	NC	↑ 1.9		↑ 2.2	
% Change from Previous Season	↓ 2.3	↓ 1.6	↑ 10.8		↑ 9.0	



November 2023 Field Crops

Acreage, Yield, and Production

	Planted (1,000 Acres)	Harvested (1,000 Acres)	Yield (Units per Acre)	Unit	Production (1,000 Units)	Unit
Sugarcane	N/A	923	35.6	Ton	32,829	Ton
% Change from Previous Estimate	N/A	↓ 0.5	↑ 1.1		↑ 0.4	
% Change from Previous Season	N/A	↓ 0.8	↓ 4.6		↓ 5.3	



Selected Upcoming Reports



November 17	Cattle on Feed
November 22	Cotton Ginnings Farm Labor
November 30	Agricultural Prices
December 1	Cotton System Fats & Oils Grain Crashings
December 8	Cotton Ginnings Crop Production

<https://www.nass.usda.gov/Publications/index.php>



#StatChat



**STAT
CHAT
SERIES**

Join @usda_nass on X using #StatChat to ask NASS Acting Methodology Division Director Lance Honig about the *Crop Production* report.



**THU
NOV 9
1PM ET**

@usda_nass
#STATCHAT





All Reports Available At

www.nass.usda.gov

For Questions

(202) 720-2127

(800) 727-9540

nass@usda.gov