

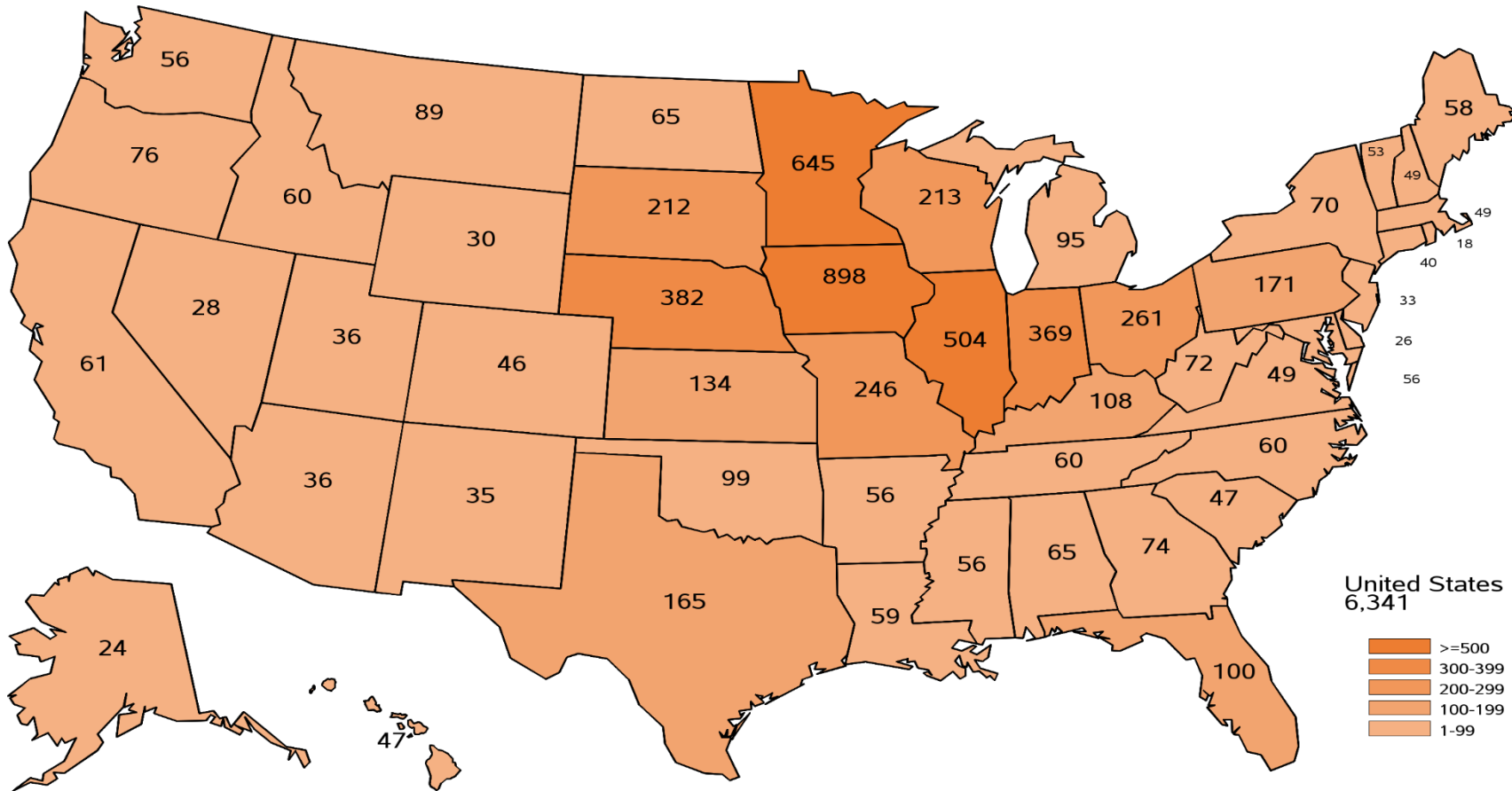


# December Quarterly Hogs and Pigs

## Agricultural Statistics Board Briefing

Travis Averill, Chief  
Livestock Branch

# 2023 December Hogs and Pigs Survey Sample Size





# U.S. Hogs and Pigs Revisions



Survey	Item	Initial Estimate (1,000 head)	Current Revision (1,000 head)	Net Revision (1,000 head)	Current Estimate (1,000 head)
March 1, 2022	All Hogs and Pigs	72,209	560	1,040	73,249
June 1, 2022	All Hogs and Pigs	72,524	340	130	72,654
September 1, 2022	All Hogs and Pigs	73,800	400	725	74,525
	Pig Crop	33,581	223	738	34,319
December 1, 2022	All Hogs and Pigs	73,119	106	1,837	74,956



# U.S. Hogs and Pigs Revisions



Survey	Item	Initial Estimate (1,000 head)	Current Revision (1,000 head)	Net Revision (1,000 head)	Current Estimate (1,000 head)
March 1, 2023	All Hogs and Pigs	72,860	571	1,276	74,136
June 1, 2023	All Hogs and Pigs	72,394	806	1,157	73,551
	Pig Crop	32,891	463	523	33,414
September 1, 2023	All Hogs and Pigs	74,319	1,003	1,004	75,323
	Pig Crop	34,229	367	367	34,596



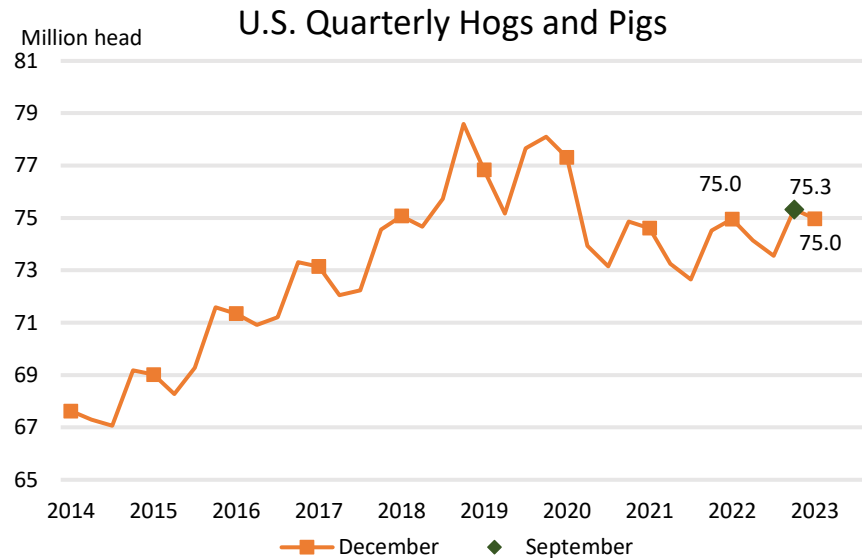
# U.S. Hogs and Pigs December 1



	2022 (1,000 head)	2023 (1,000 head)	% Change from Previous Year	
All Hogs and Pigs	74,956	74,971	↑	0.0
Breeding Hogs	6,204	5,999	↓	3.3
Market Hogs	68,752	68,973	↑	0.3

**Top 5 States  
Inventory  
(1,000 head)**

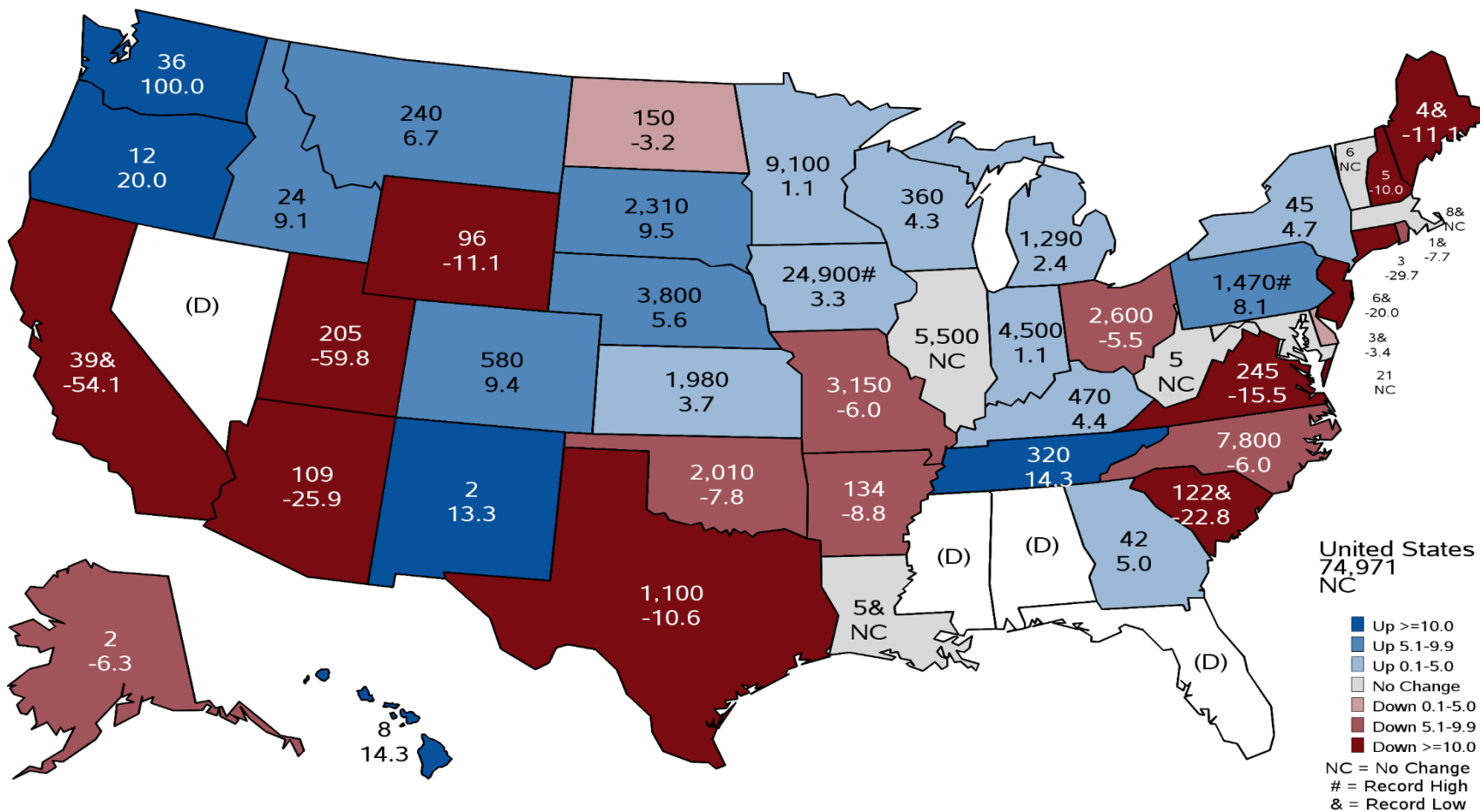
Iowa	24,900
Minnesota	9,100
North Carolina	7,800
Illinois	5,500
Indiana	4,500





# December 1, 2023 Hogs and Pigs Inventory

(1,000) Head and Percent Change from Previous Year

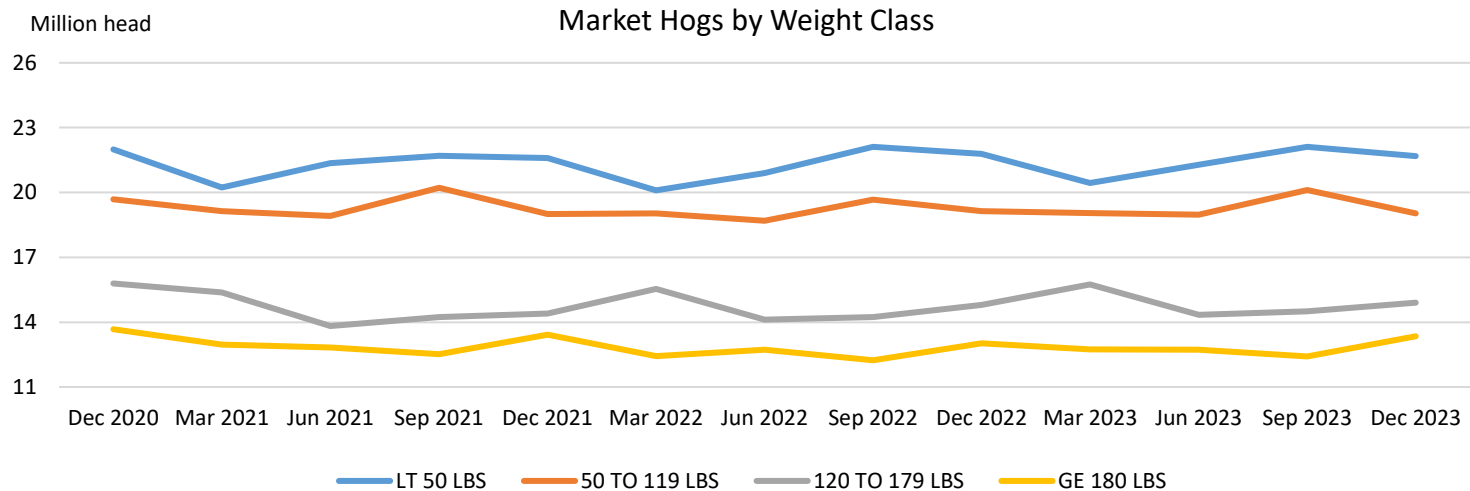




# U.S. Hogs and Pigs December 1



	2022 (1,000 head)	2023	% Change from Previous Year	
Market Hogs	68,752	68,973	↑	0.3
Less than 50 lbs	21,788	21,681	↓	0.5
50 – 119 lbs	19,134	19,039	↓	0.5
120 – 179 lbs	14,801	14,908	↑	0.7
180 lbs or more	13,029	13,344	↑	2.4

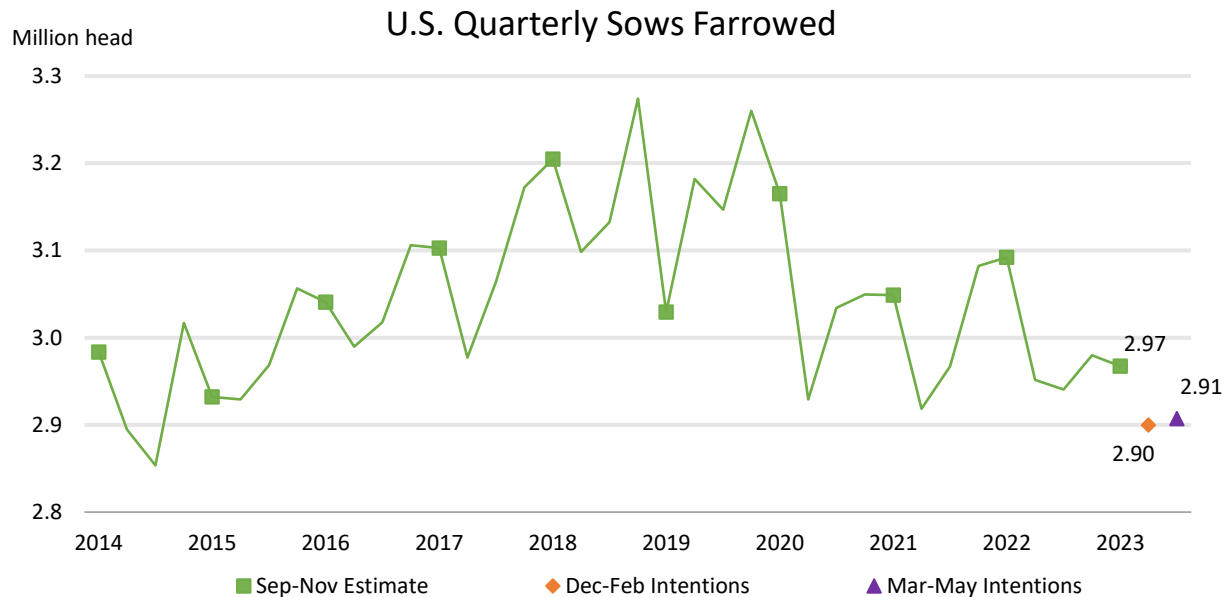




# U.S. Hogs and Pigs December 1



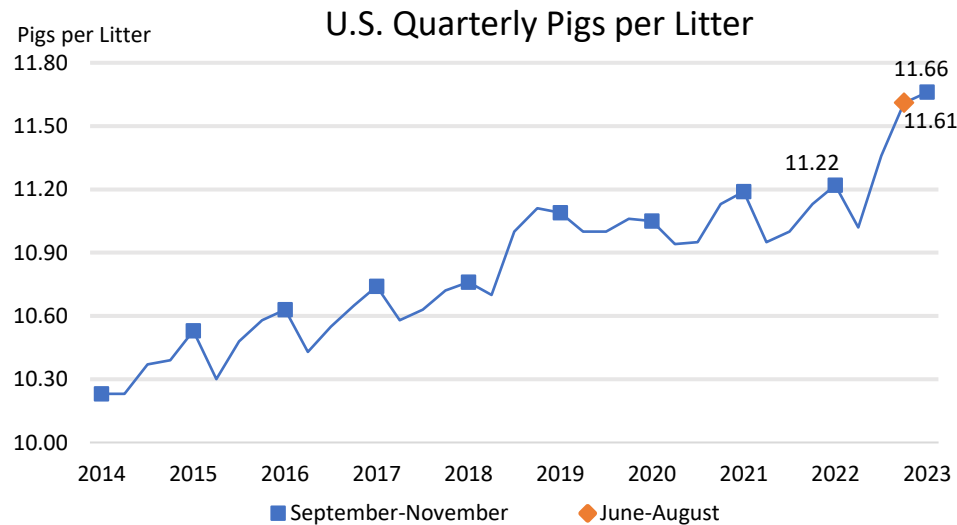
	2022	2023	2024	% Change from Previous Year
	(1,000 head)			
Sows Farrowed	3,092	2,968		↓ 4.0
Intentions				
Dec – Feb		2,952	2,900	↓ 1.8
Mar – May		2,941	2,907	↓ 1.1





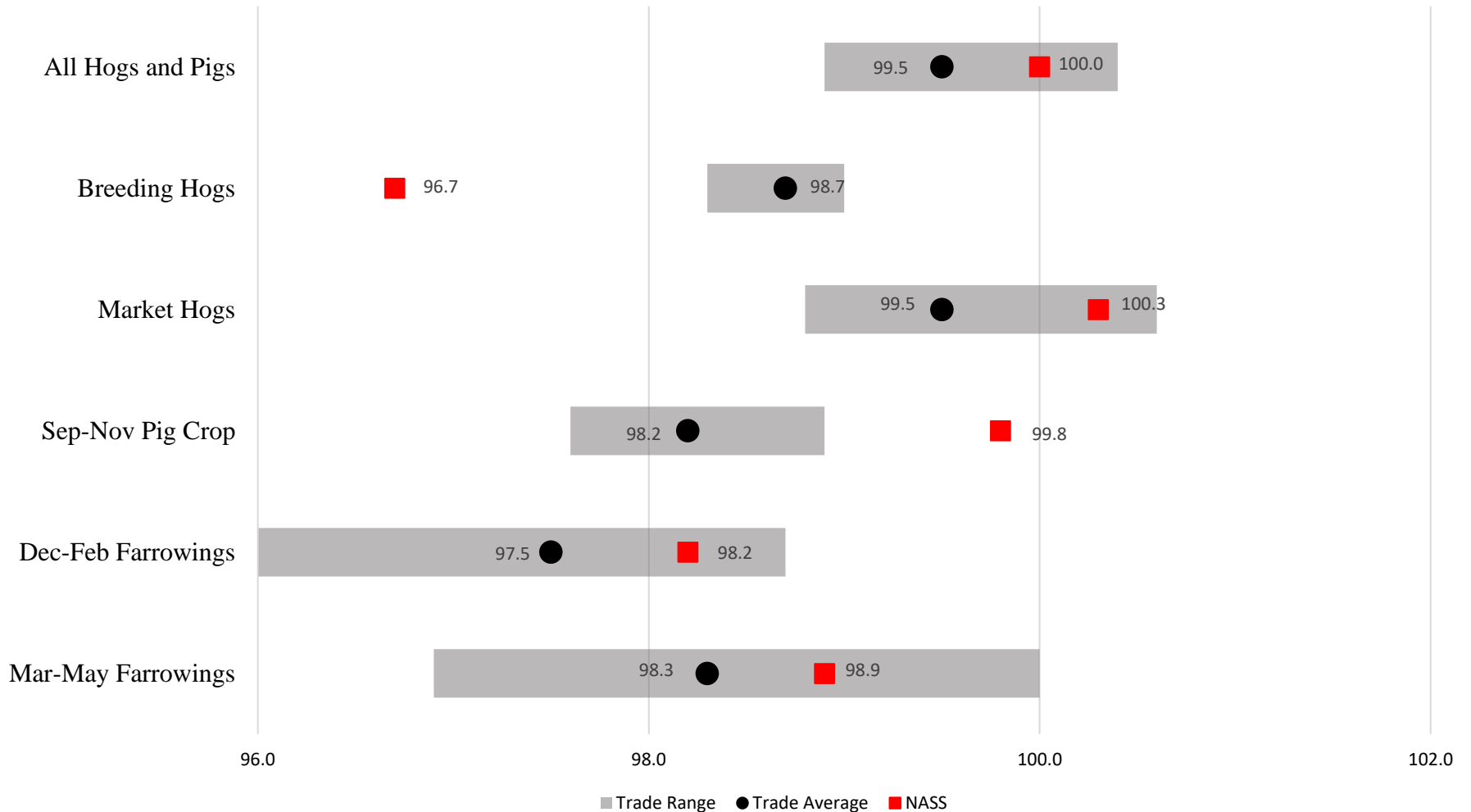
# U.S. Hogs and Pigs December 1

	2022 (1,000 head)	2023	% Change from Previous Year	
Pig Crop	34,701	34,617	↓	0.2
	(Number)			
Pigs per Litter	11.22	11.66	↑	3.9



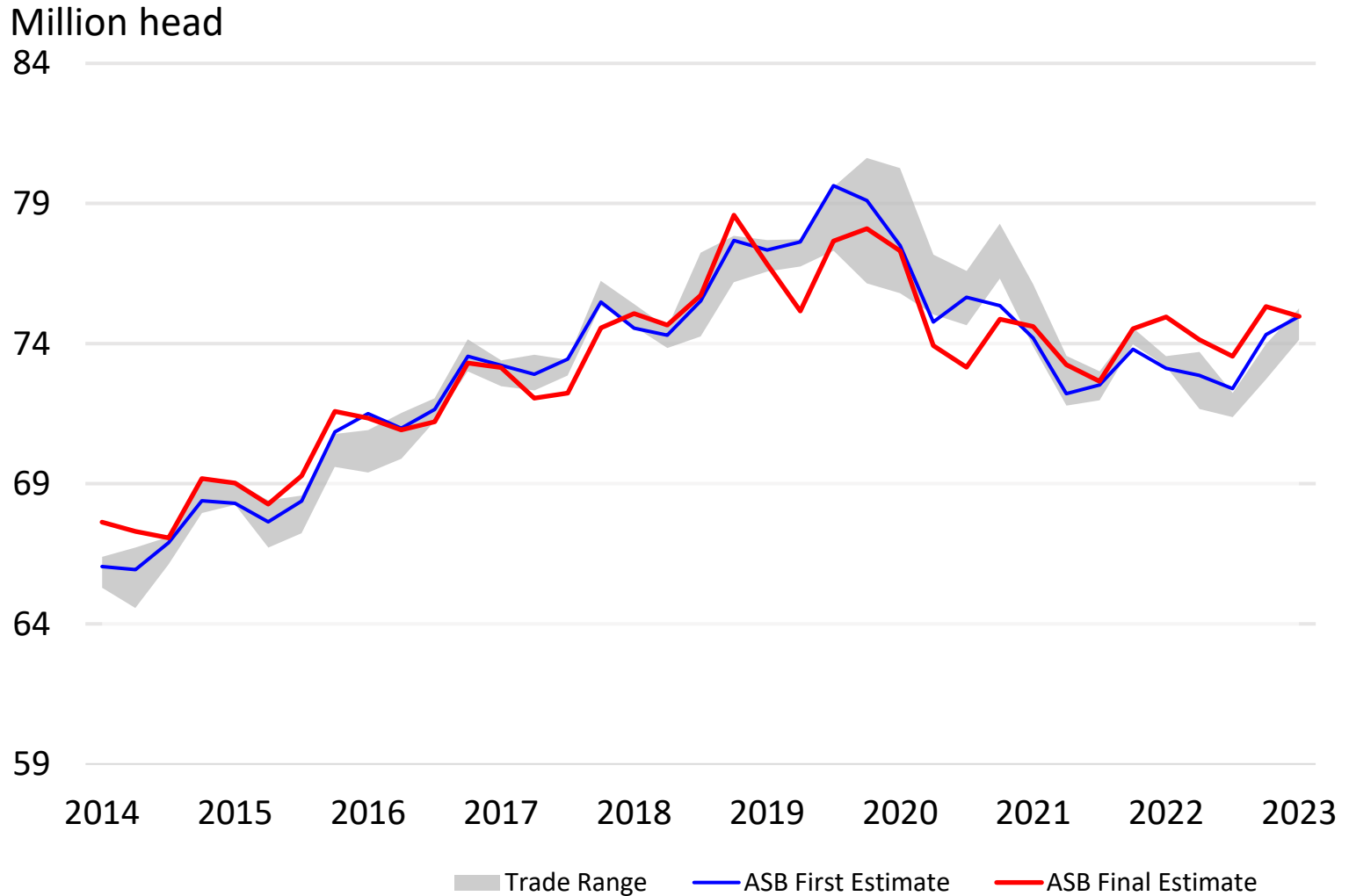


# Trade Expectations Compared to NASS Estimates Percent of Previous Year





# All Hogs and Pigs First Estimate vs Final Estimate





# Breeding Herd Inventory Disposition and Utilization



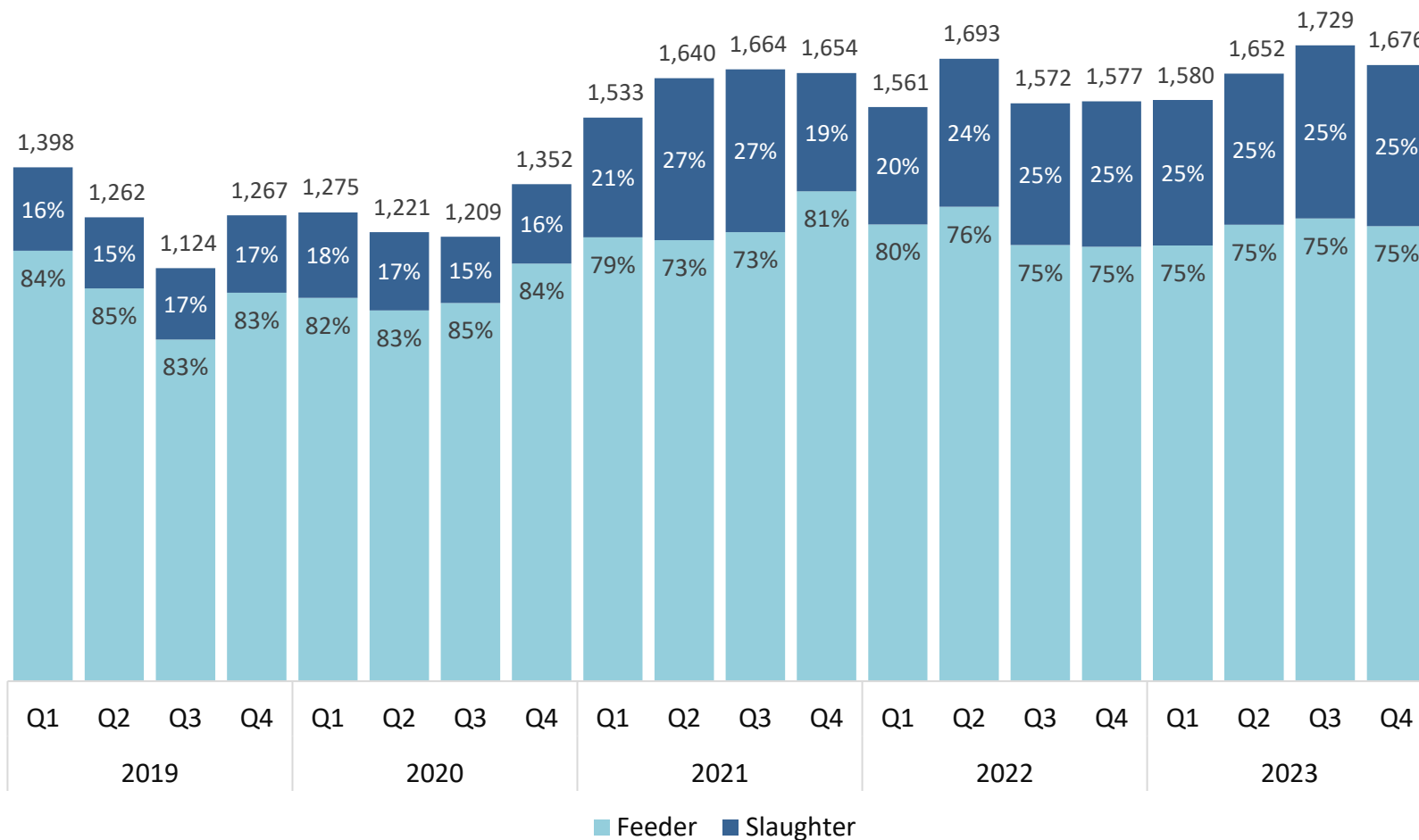
Year	Sep 1 Estimate (1,000 head)	Slaughter (1,000 head)	Additions (1,000 head)	Dec 1 Estimate (1,000 head)	Sow Utilization (Percent)
2014	5,920	802	822	5,939	50
2015	5,986	772	789	6,002	49
2016	6,016	825	919	6,110	51
2017	6,117	839	900	6,179	51
2018	6,330	859	855	6,326	51
2019	6,431	843	964	6,551	47
2020	6,333	880	723	6,176	50
2021	6,190	831	816	6,175	49
2022	6,252	849	800	6,204	49
2023	6,179	906	726	5,999	48



# Canadian Imports by Quarter

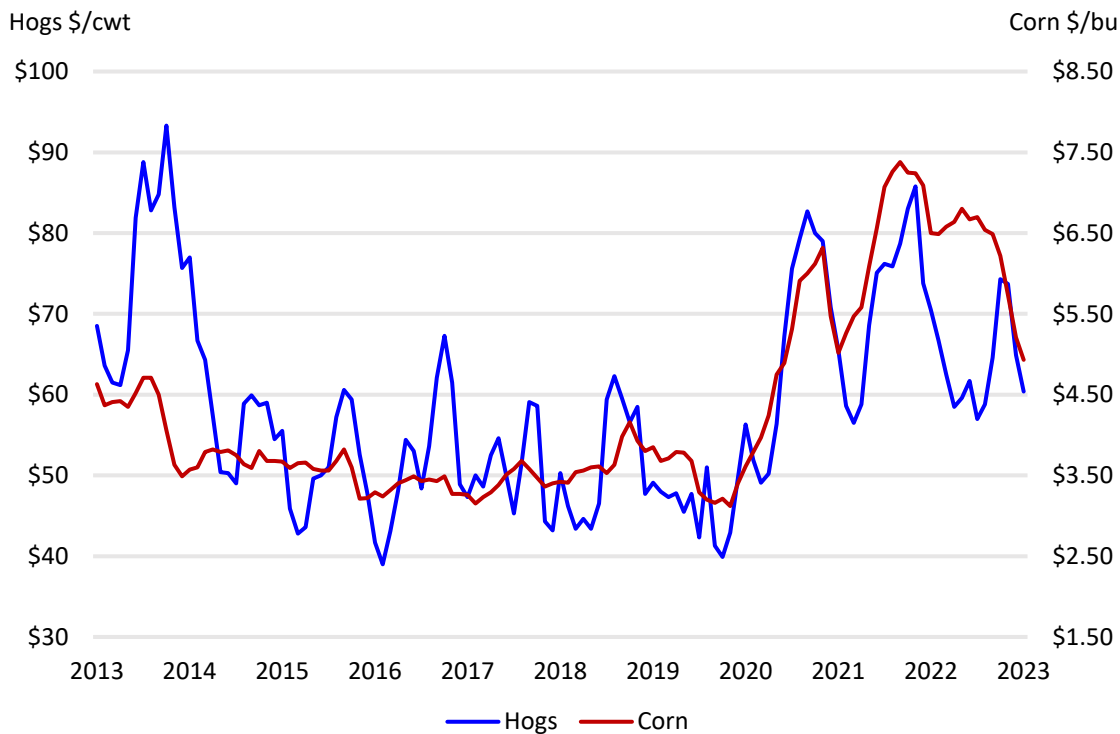
## Feeder Pigs and Slaughter Hogs

(1,000 head)





# U.S. Prices Received by Farmers for Hogs and Corn



	Hogs	Corn
Month	\$/cwt	\$/bu
May	58.8	6.54
June	64.6	6.49
July	74.3	6.22
August	73.7	5.73
September	64.9	5.21
October	60.4	4.93

	Hog to Corn
Month	Ratio
May	8.99
June	9.95
July	11.95
August	12.86
September	12.46
October	12.25



# Selected Upcoming Reports



December 29	Agricultural Prices
January 2	Cotton Systems, Fats & Oils, Grain Crushing
January 5	Dairy Products
January 12	Cotton Ginnings Crop Production Crop Production – Annual Grain and Rice Stocks
January 19	Cattle on Feed
January 31	Cattle Sheep and Goats

<https://www.nass.usda.gov/Publications/index.php>



USDA'S 100<sup>TH</sup> ANNUAL

## AGRICULTURAL OUTLOOK FORUM

CULTIVATING THE FUTURE

Hybrid  
Event



February 15-16, 2024 • Crystal City Gateway Marriott, Arlington, VA

[Register to Attend In-Person or Virtually](#)



## STAT CHAT SERIES

@usda\_nass  
#STATCHAT

Join NASS's Livestock Branch Chief Travis Averill on X using #StatChat to ask questions about the December *Hogs and Pigs* report.

FRIDAY,  
Dec. 22  
4PM ET





**All Reports Available At**

**[www.nass.usda.gov](http://www.nass.usda.gov)**

**For Questions**

**(202) 720-3570**

**(800) 727-9540**

**[nass@usda.gov](mailto:nass@usda.gov)**