



September Crop Production

Agricultural Statistics Board Briefing

**Patrick Boyle, Chief
Crops Branch**

September 12, 2024



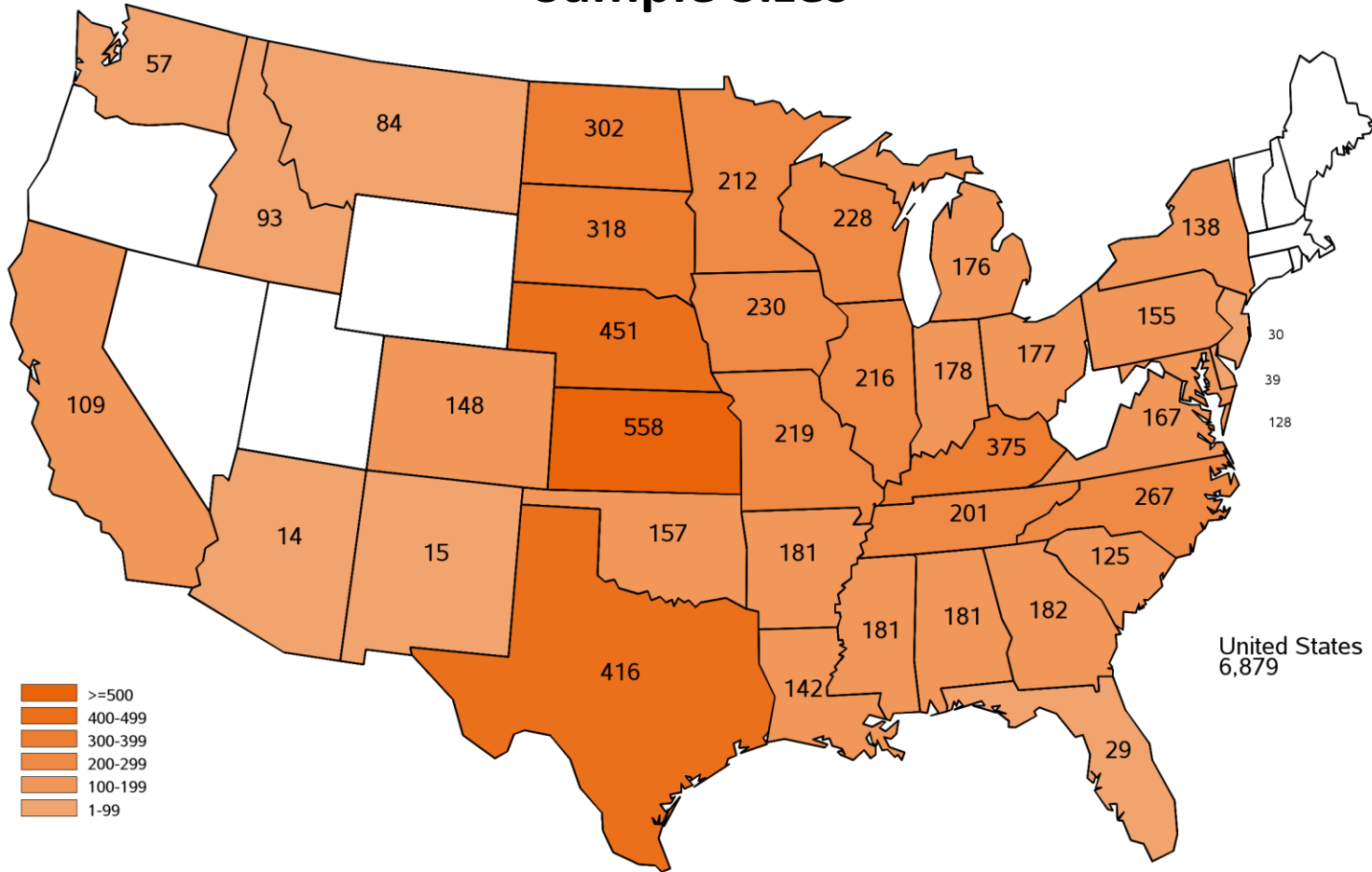
Data Sources



Operator Reported Survey	Ag Yield	Sample Size = 6,879	August 30 - September 9
Field Survey	Objective Yield Corn, Soybeans	Sample Size = 3,090	August 24 - September 1
Remotely Sensed (Satellite)	Time Series 250 Meter MODIS Satellite Data	Focus Area Corn Belt	Imagery Through September 4
FSA Certified Acres	Farm Service Agency policy requires that producers participating in several programs submit an annual report regarding all cropland use on their farms.		

September 2024 Ag Yield Survey

Sample Sizes





Special Note

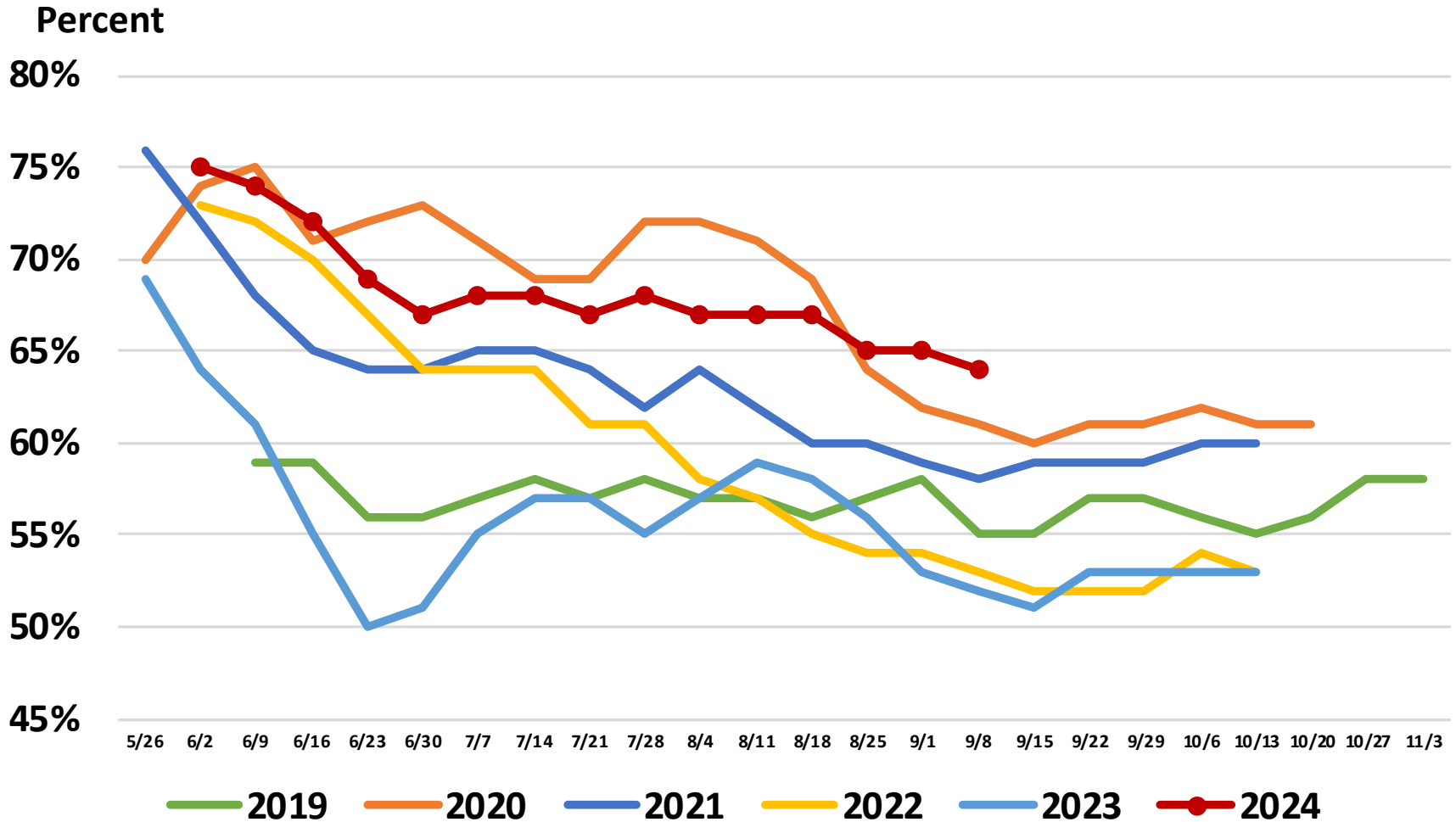


Each September, NASS has the opportunity to revise planted and harvested acreage estimates for chickpeas, corn, cotton, dry edible peas, lentils, peanuts, rice, sorghum, soybeans, and sugarbeets. Revisions are based on all available data, including the latest certified acreage data from the Farm Service Agency (FSA). All States in the estimating program for these crops were subject to review and updating.



United States Corn Condition

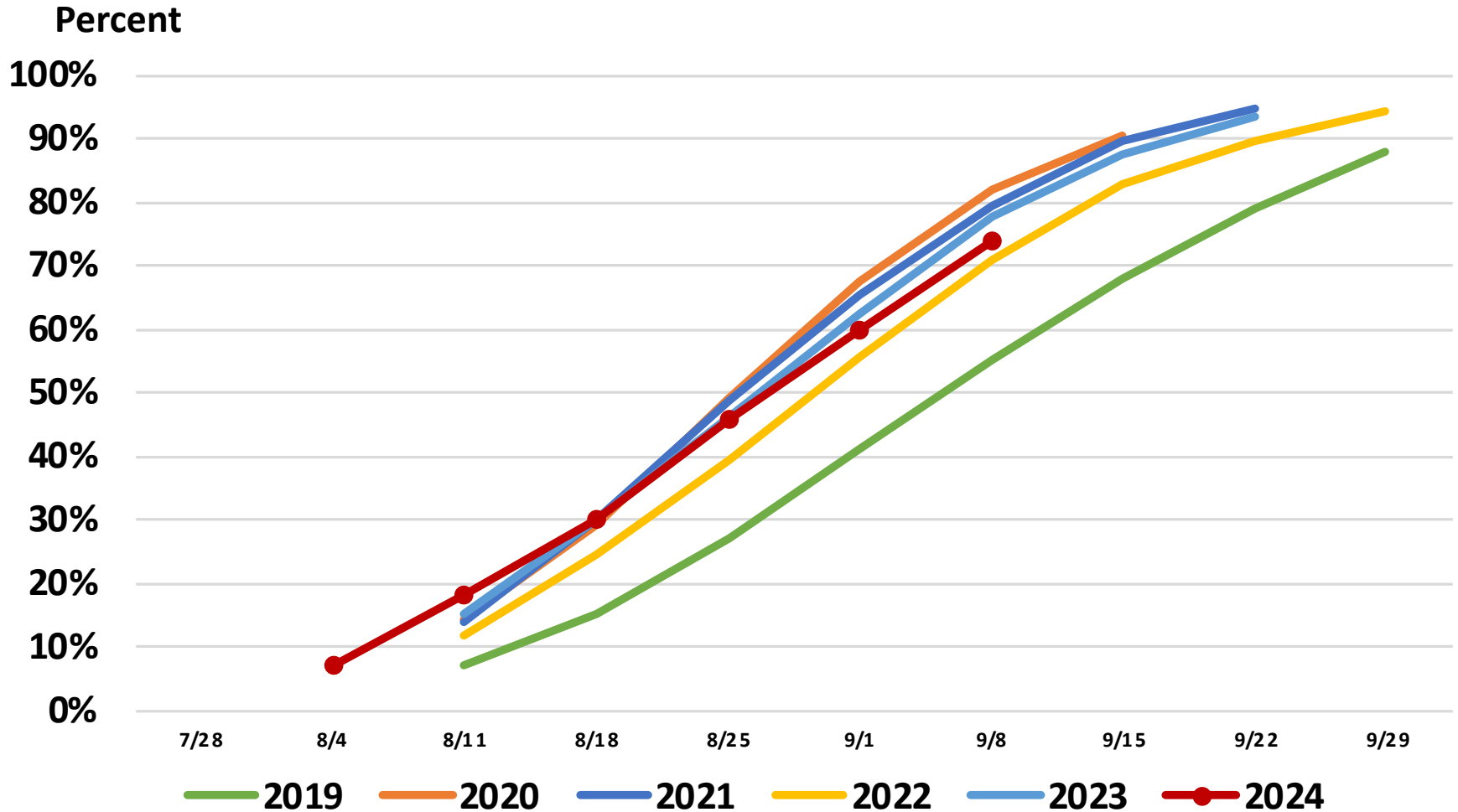
Percent Rated Good to Excellent





United States Corn Progress

Percent Dented





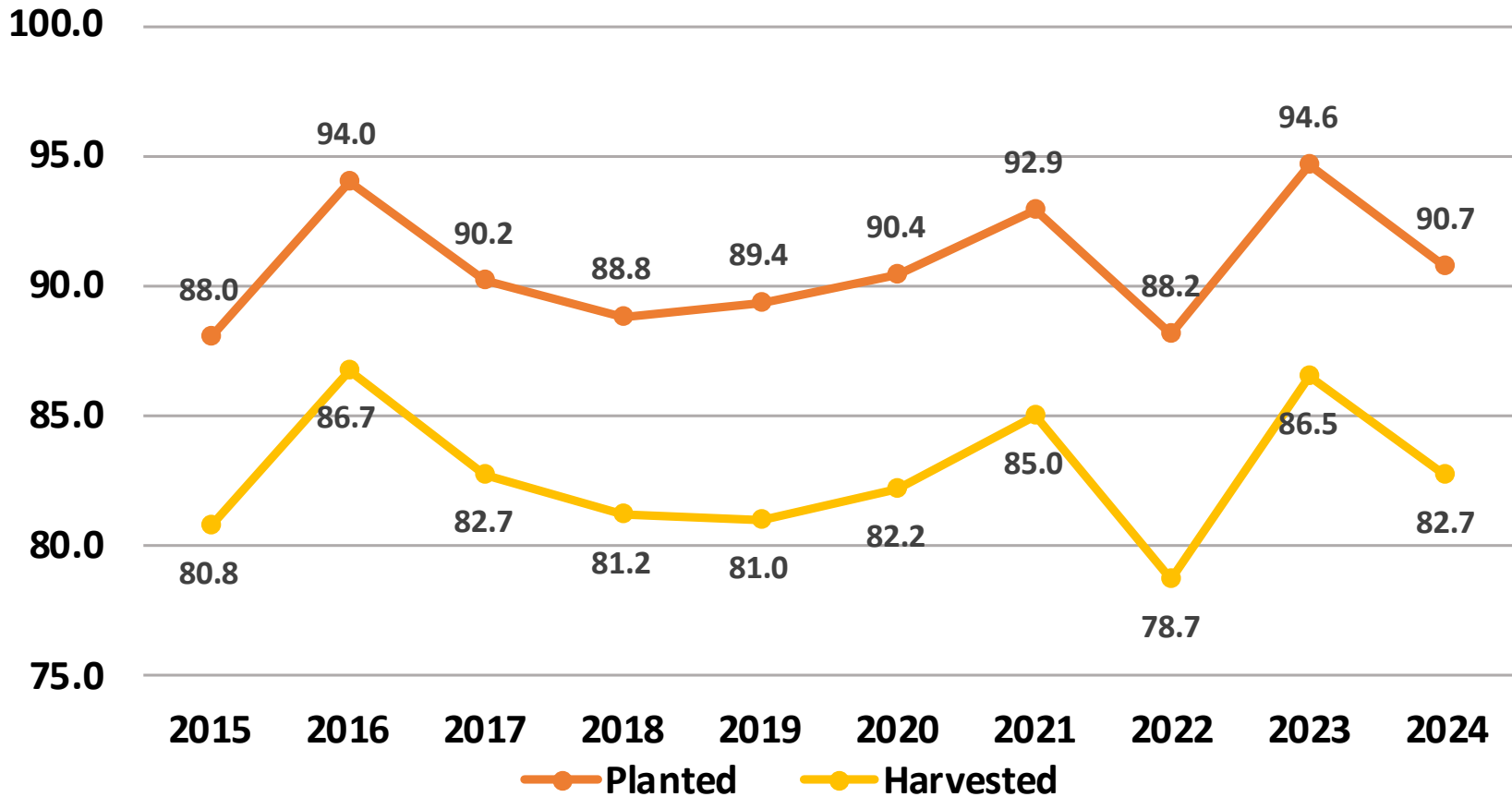
September 2024 Corn Acreage, Yield, and Production

	Planted (1,000 Acres)	Harvested (1,000 Acres)	Yield (Bushels/Acre)	Production (1,000 Bushels)
United States	90,748	82,710	183.6	15,185,510
% Change from Previous Estimate	NC	NC	↑ 0.3	↑ 0.3
% Change from Previous Season	↓ 4.1	↓ 4.4	↑ 3.6	↓ 1.0

	Top 5 States - By Production							
	Planted (1,000 Acres)		Harvested (1,000 Acres)		Yield (Bushels/Acre)		Production (1,000 Bushels)	
		% Δ PY		% Δ PY		% Δ PY		% Δ PY
Iowa	12,900	↓ 1.5	12,350	↓ 1.6	212	↑ 5.5	2,618,200	↑ 3.8
Illinois	10,800	↓ 3.6	10,650	↓ 3.6	222	↑ 7.8	2,364,300	↑ 3.9
Nebraska	10,100	↑ 1.5	9,700	↑ 2.1	195	↑ 7.1	1,891,500	↑ 9.4
Minnesota	8,200	↓ 4.7	7,650	↓ 6.5	183	↓ 1.1	1,399,950	↓ 7.5
Indiana	5,200	↓ 4.6	5,060	↓ 4.7	210	↑ 3.4	1,062,600	↓ 1.4

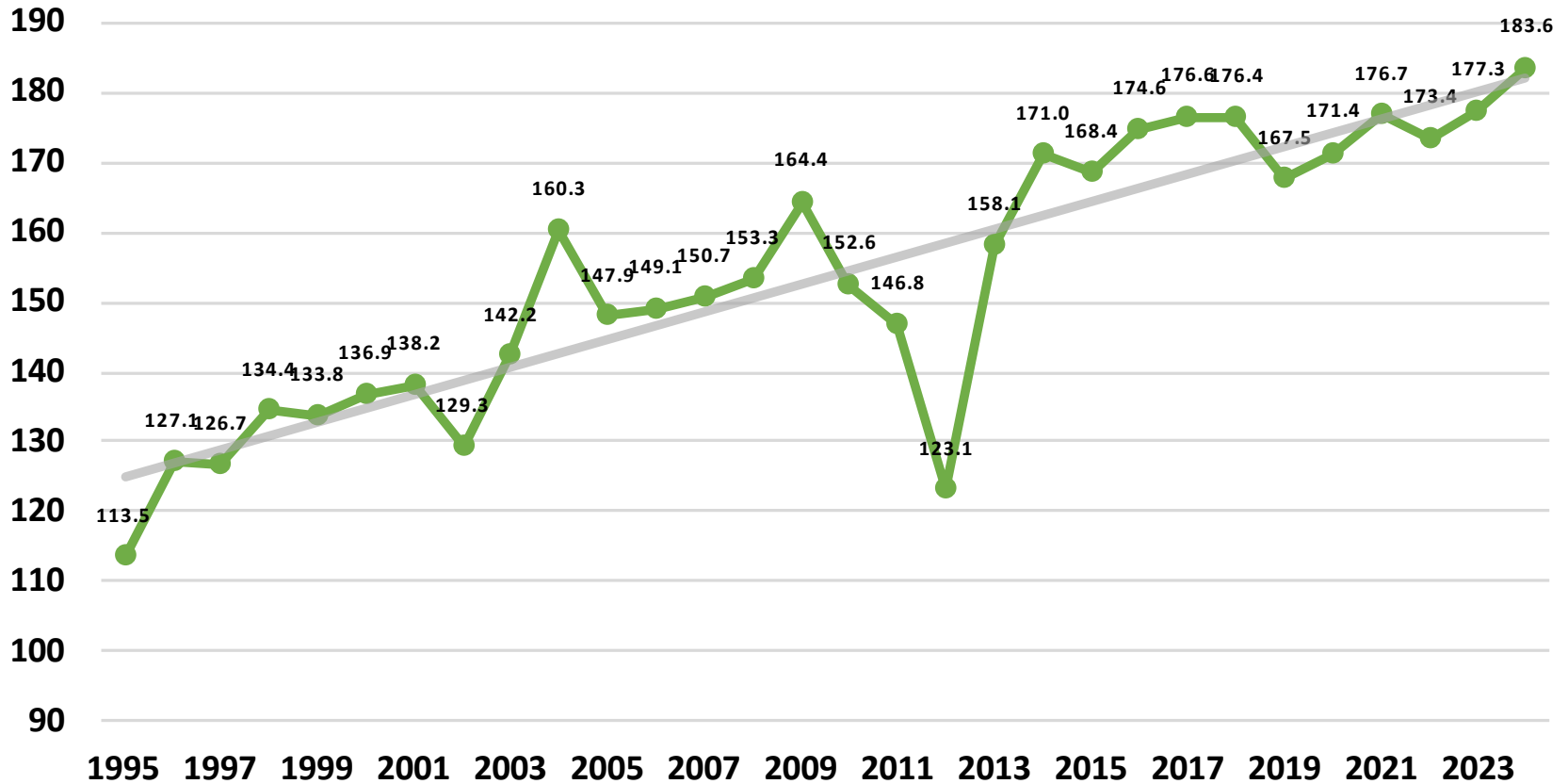
Corn Acres United States

Million Acres



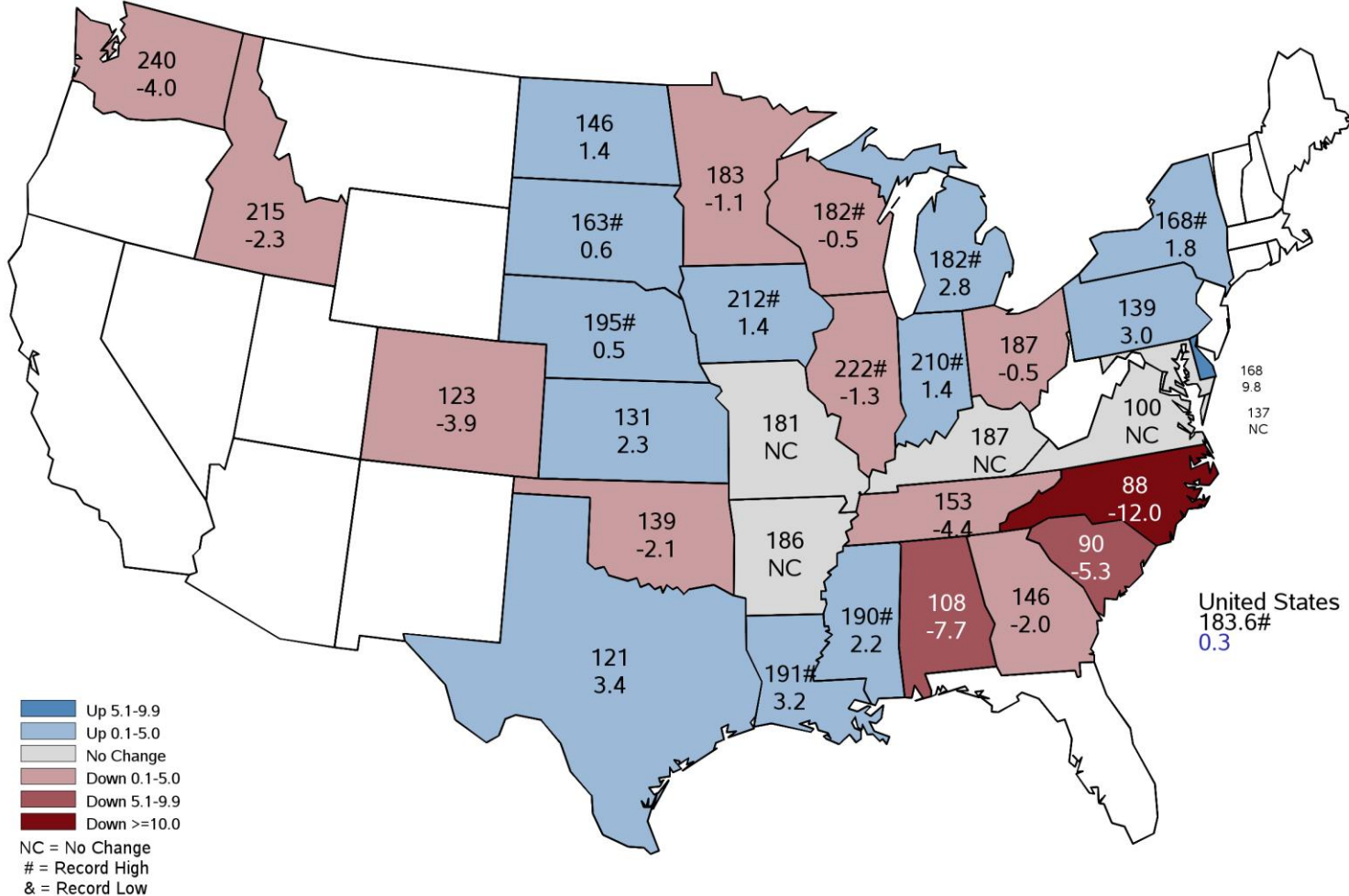
Corn Yield United States

Bushels per Acre



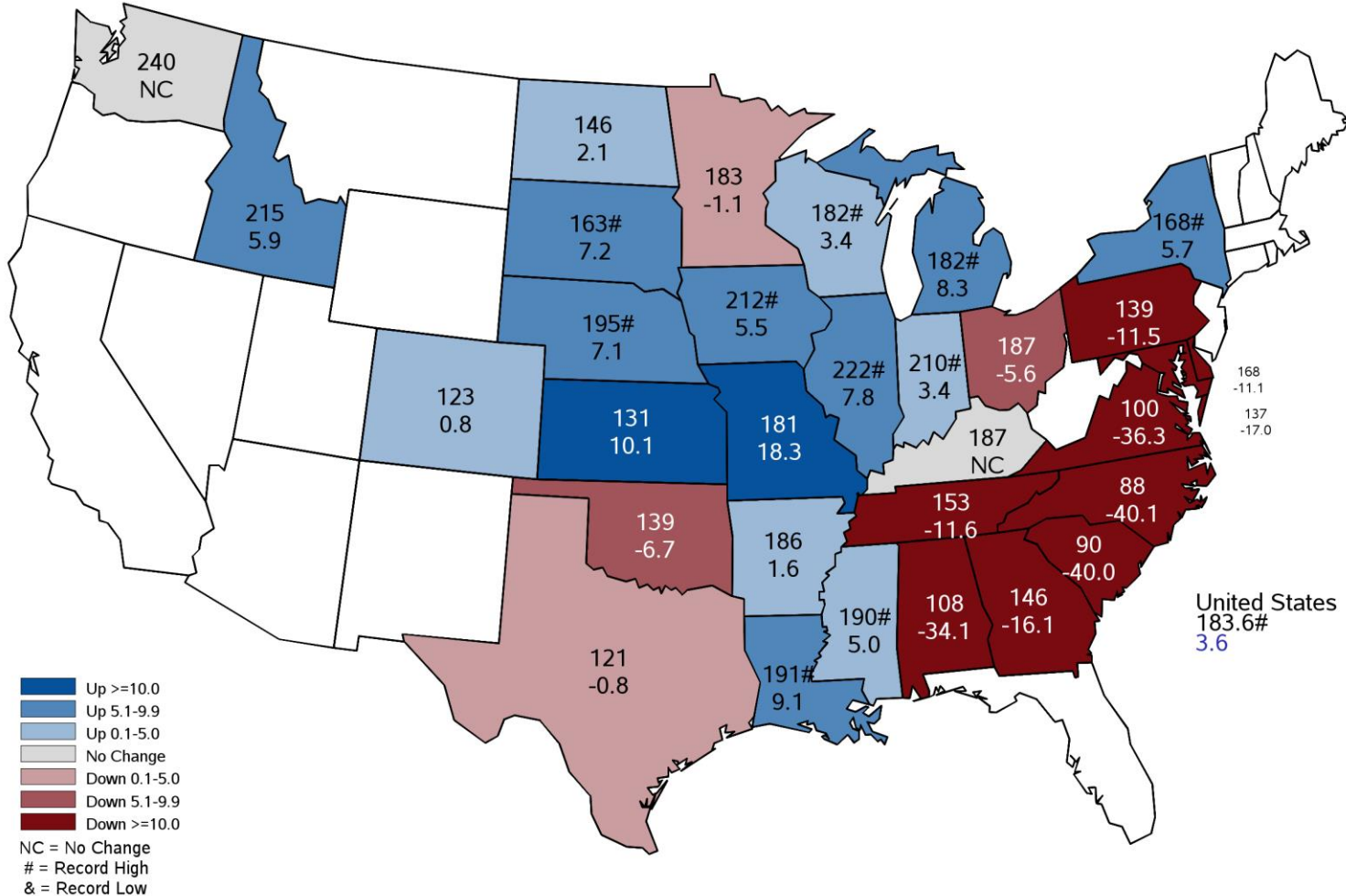
September 2024 Corn Yield

Bushels and Percent Change from Previous Month



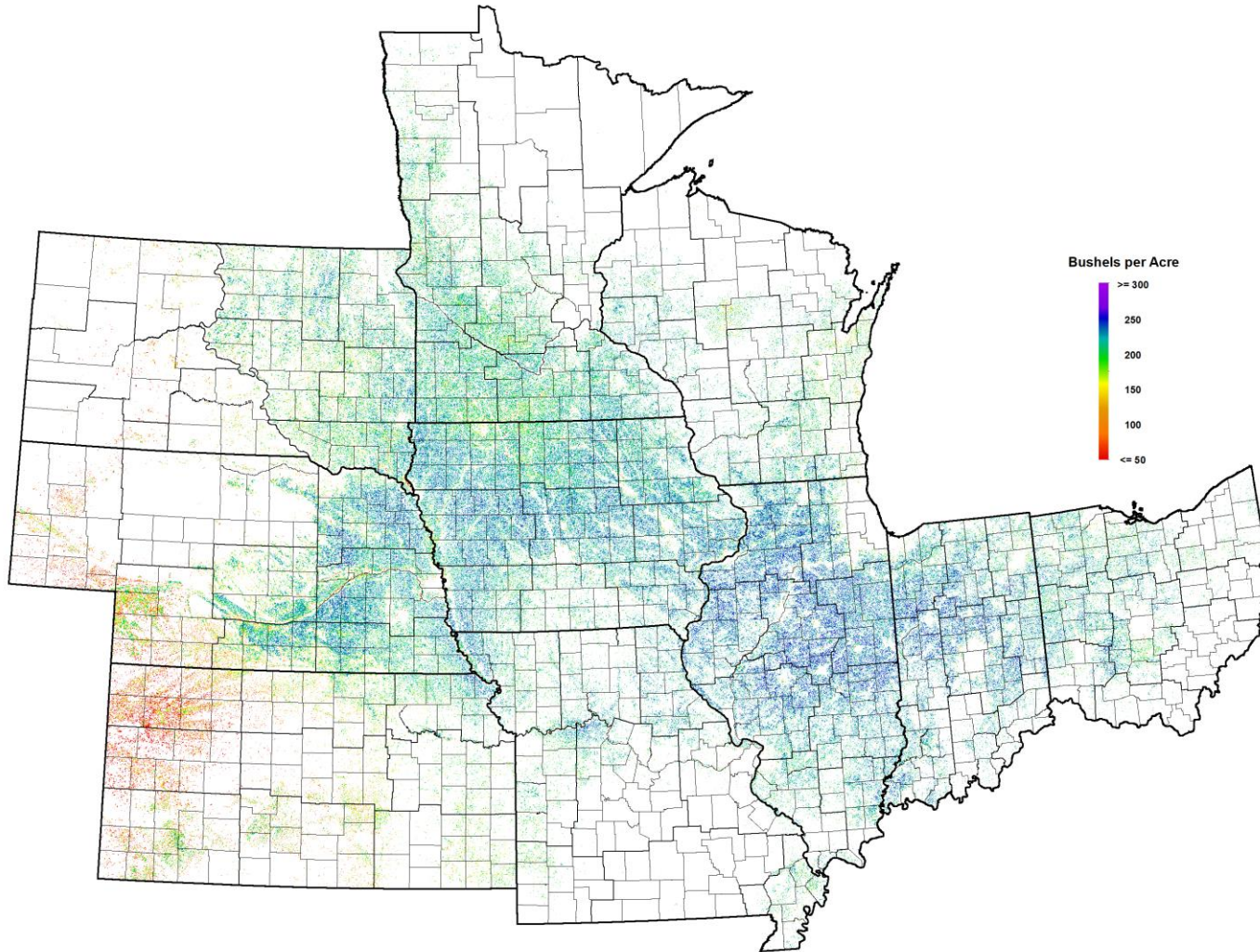
September 2024 Corn Yield

Bushels and Percent Change from Previous Year



September 2024 Corn

NASA Terra MODIS Modeled Yield



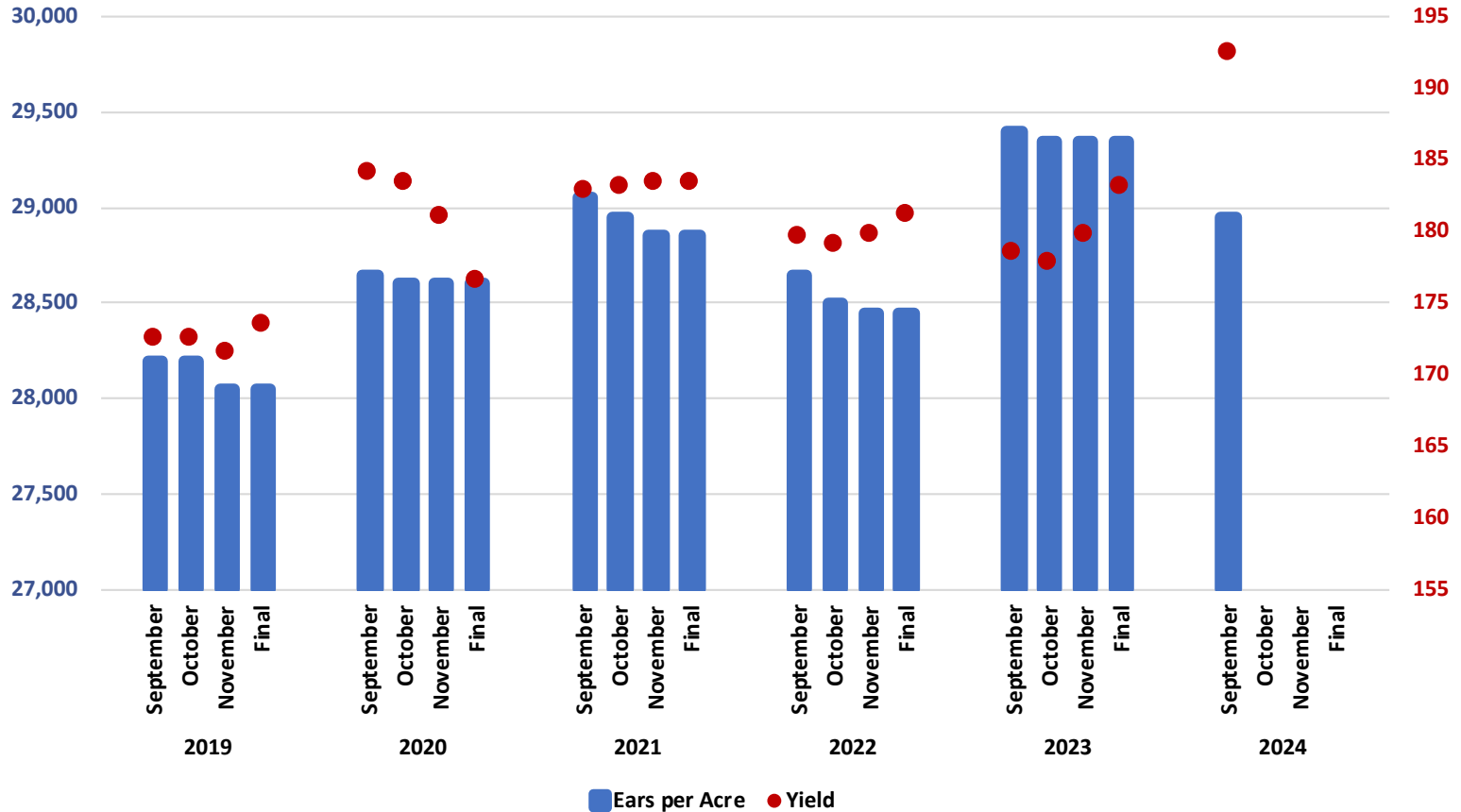


September 2024 Corn Objective Yield

Ears per Acre and Yield for 10 State Region

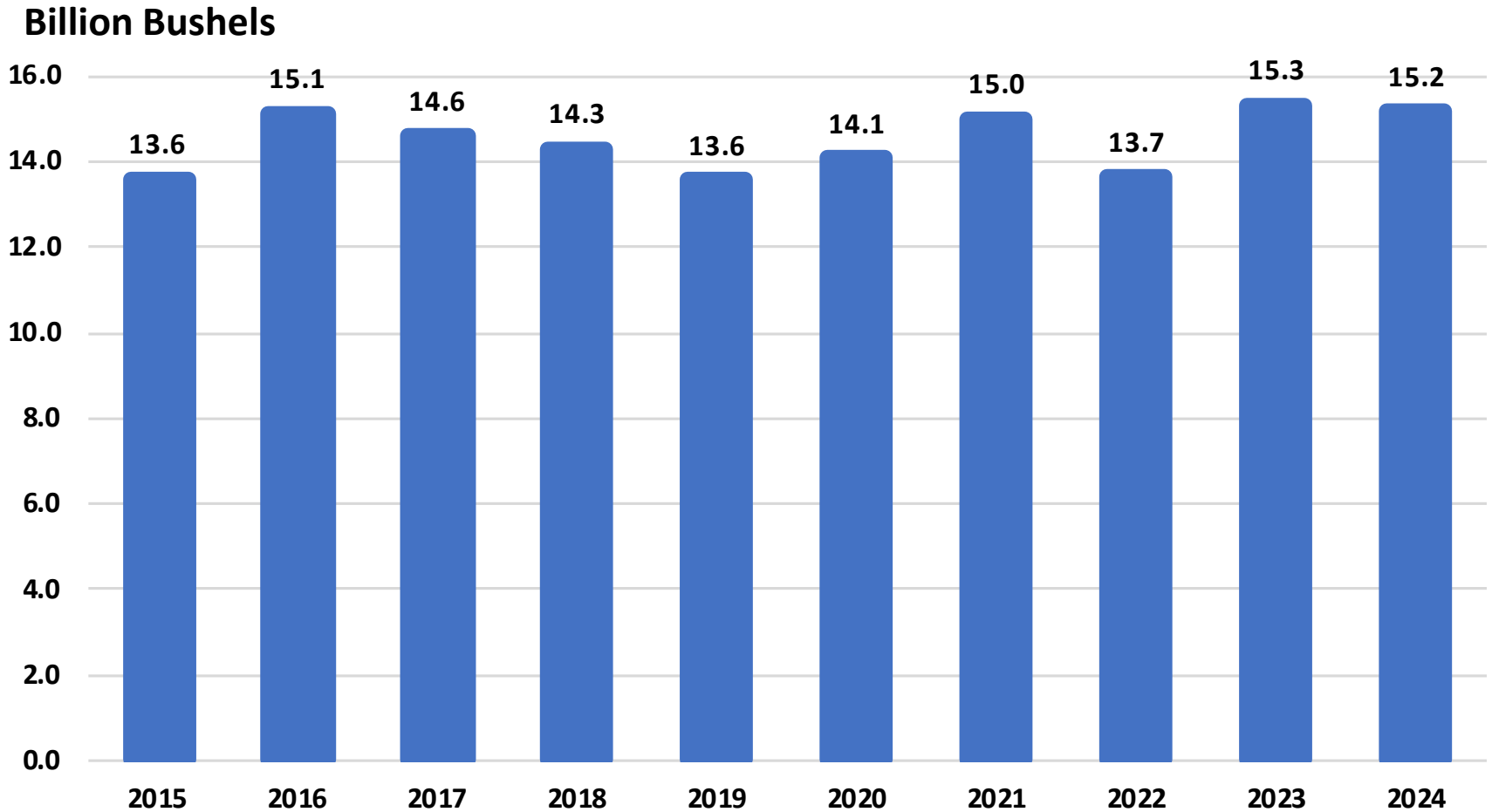
Ears per Acre

Bushels per Acre



Corn Production

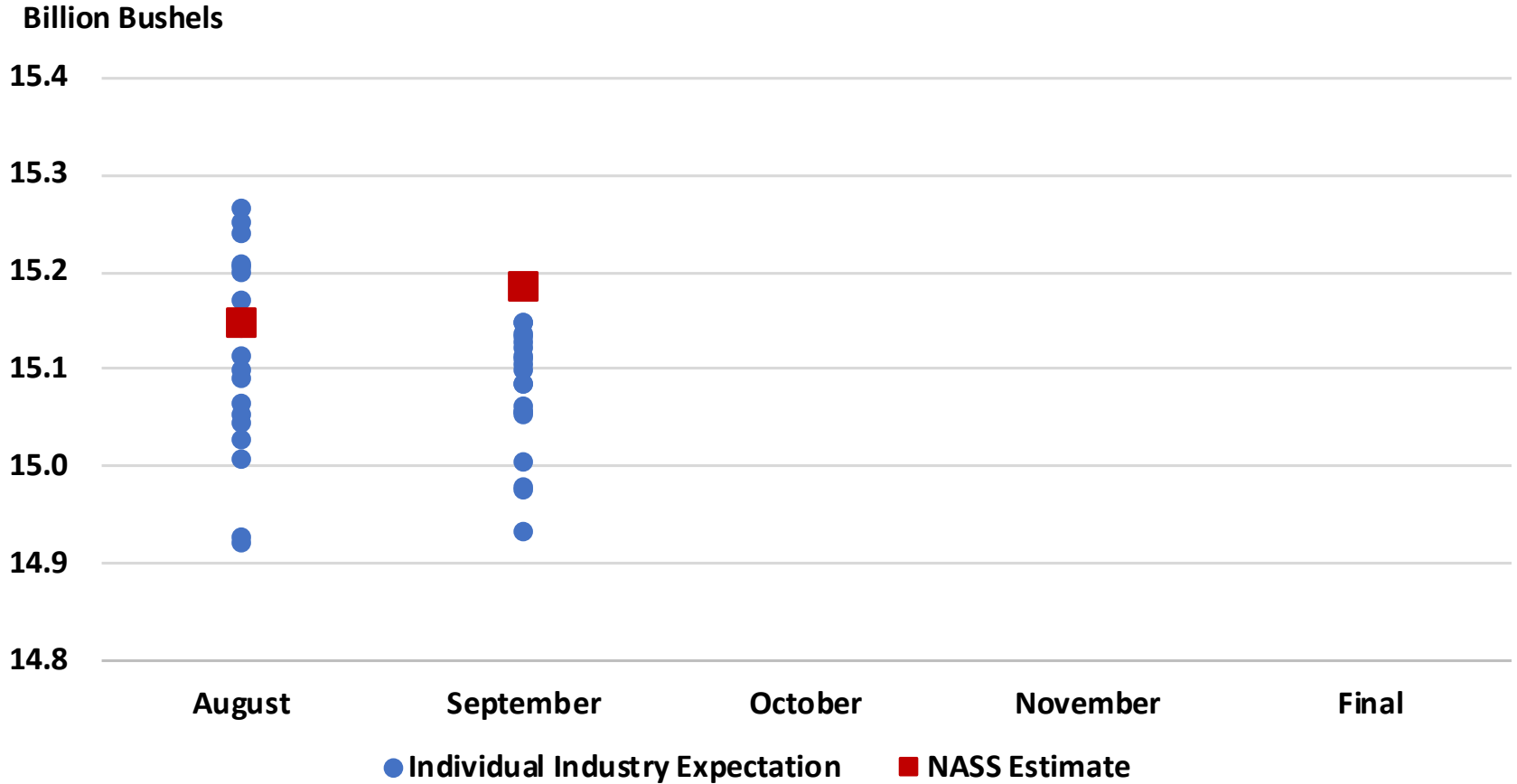
United States





2024 U.S. Corn Production

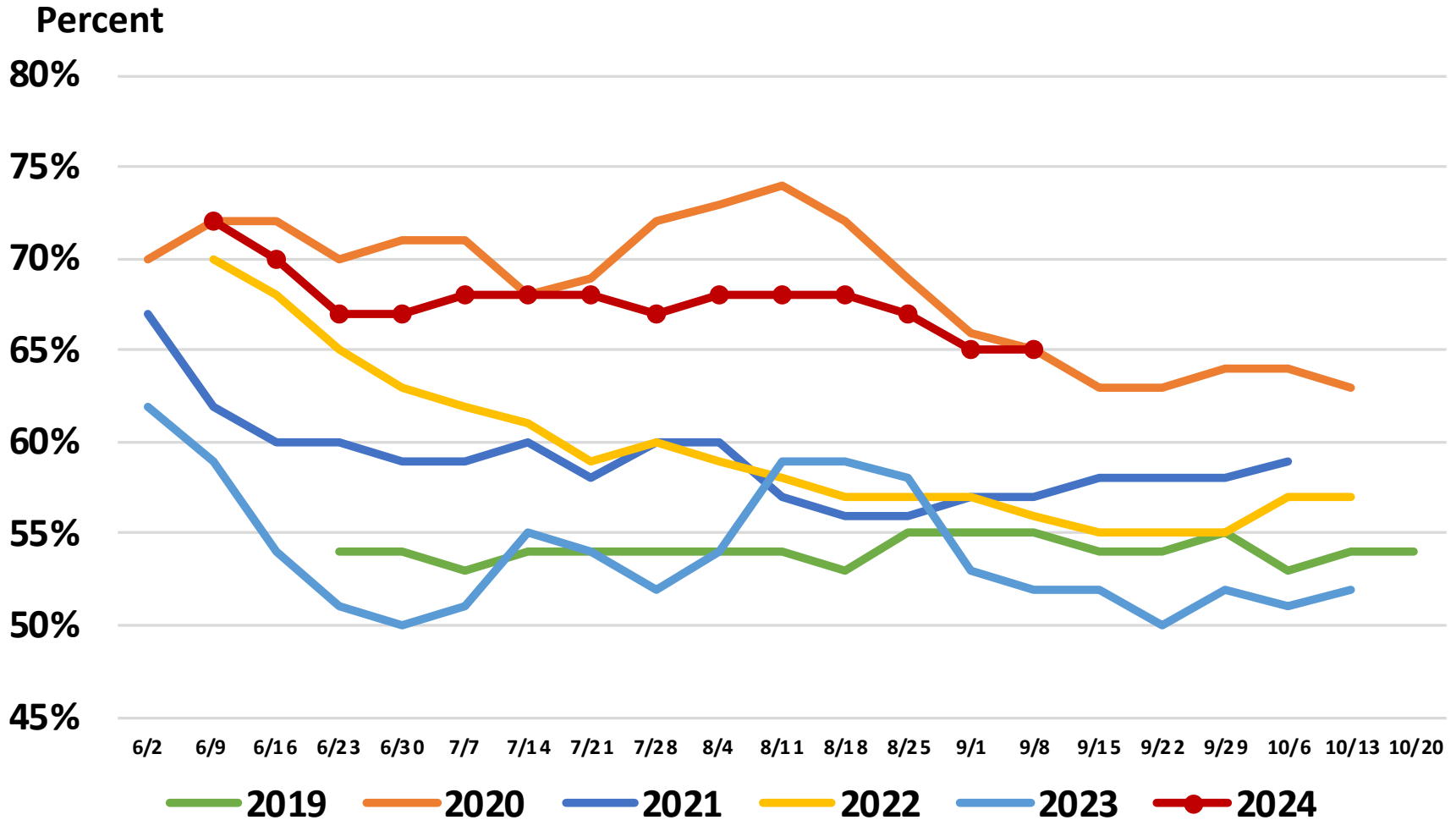
Industry Expectations vs NASS





United States Soybean Condition

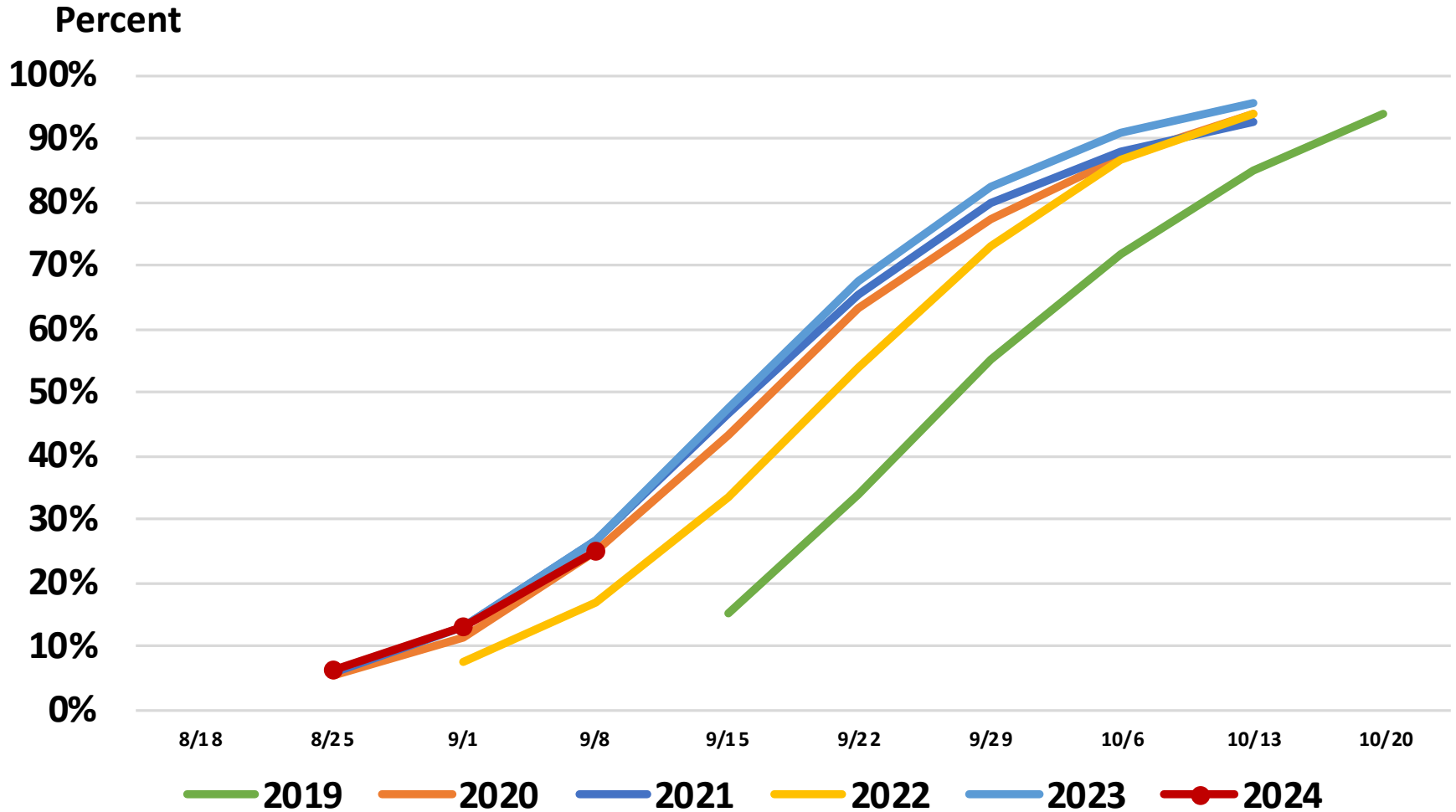
Percent Rated Good to Excellent





United States Soybean Progress

Percent Dropping Leaves





September 2024 Soybeans

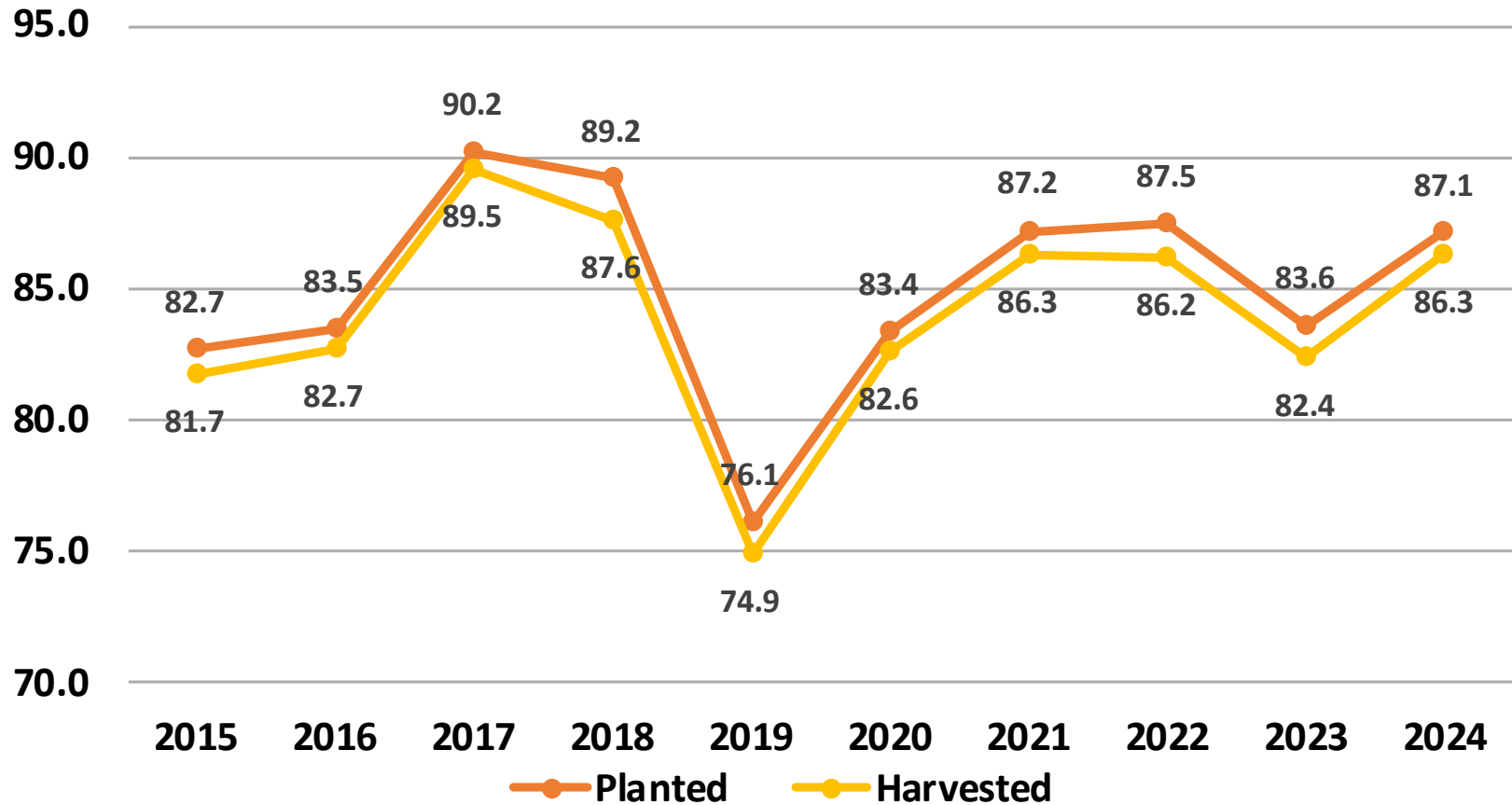
Acreage, Yield, and Production

	Planted (1,000 Acres)		Harvested (1,000 Acres)		Yield (Bushels/Acre)		Production (1,000 Bushels)	
United States	87,100		86,271		53.2		4,585,889	
% Change from Previous Estimate	NC		NC		NC		↓ 0.1	
% Change from Previous Season	↑ 4.2		↑ 4.8		↑ 5.1		↑ 10.1	

	Top 5 States - By Production							
	Planted (1,000 Acres)		Harvested (1,000 Acres)		Yield (Bushels/Acre)		Production (1,000 Bushels)	
		% Δ PY		% Δ PY		% Δ PY		% Δ PY
Illinois	10,800	↑ 4.3	10,750	↑ 4.4	65.0	↑ 3.2	698,750	↑ 7.7
Iowa	10,050	↑ 1.0	9,970	↑ 0.9	63.0	↑ 8.6	628,110	↑ 9.6
Indiana	5,800	↑ 5.5	5,780	↑ 5.5	63.0	↑ 3.3	364,140	↑ 8.9
Minnesota	7,400	↑ 0.7	7,330	↑ 0.7	49.0	↑ 2.1	359,170	↑ 2.8
Nebraska	5,300	↑ 1.0	5,250	↑ 1.4	59.0	↑ 14.6	309,750	↑ 16.1

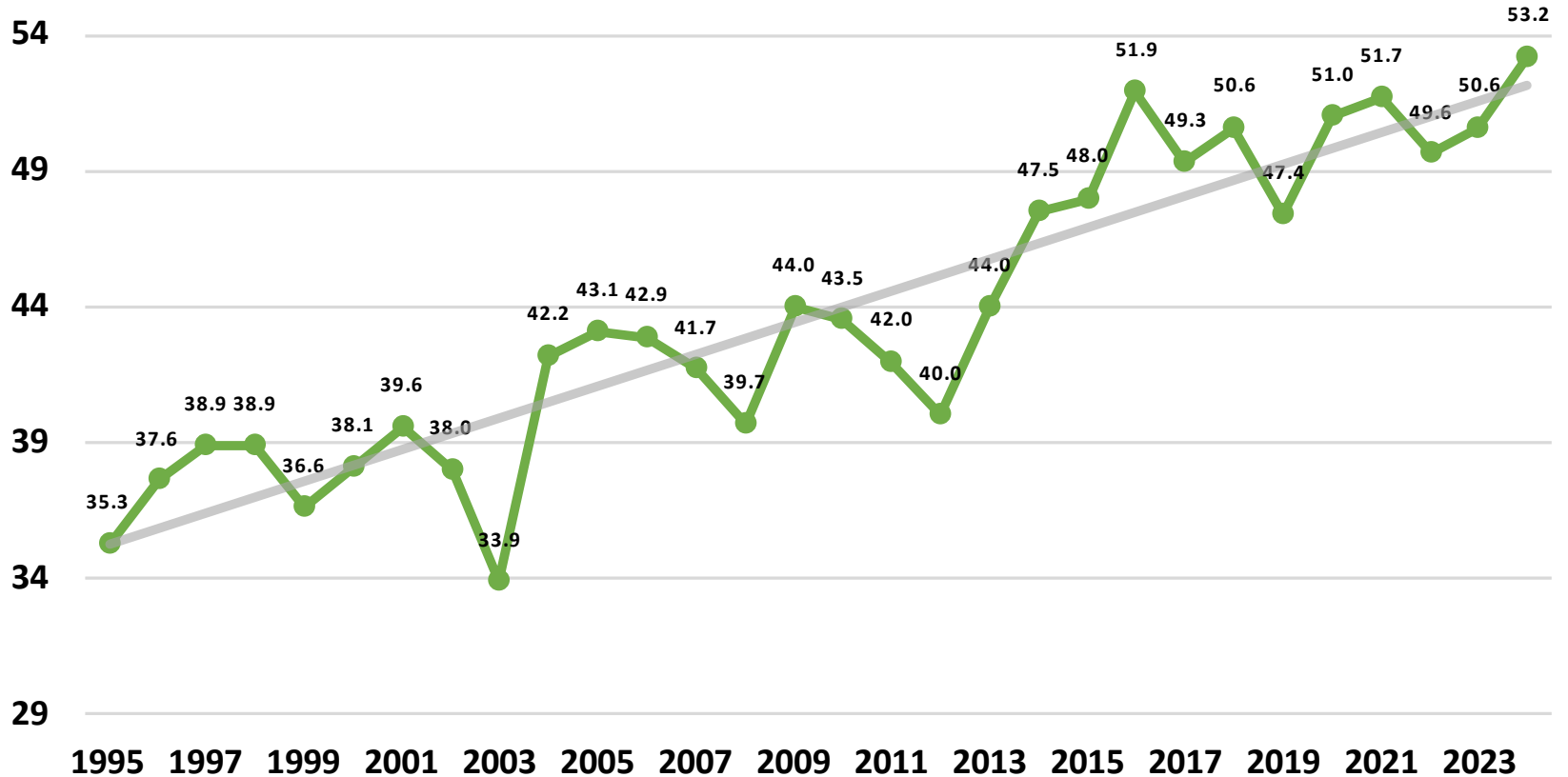
Soybean Acres United States

Million Acres



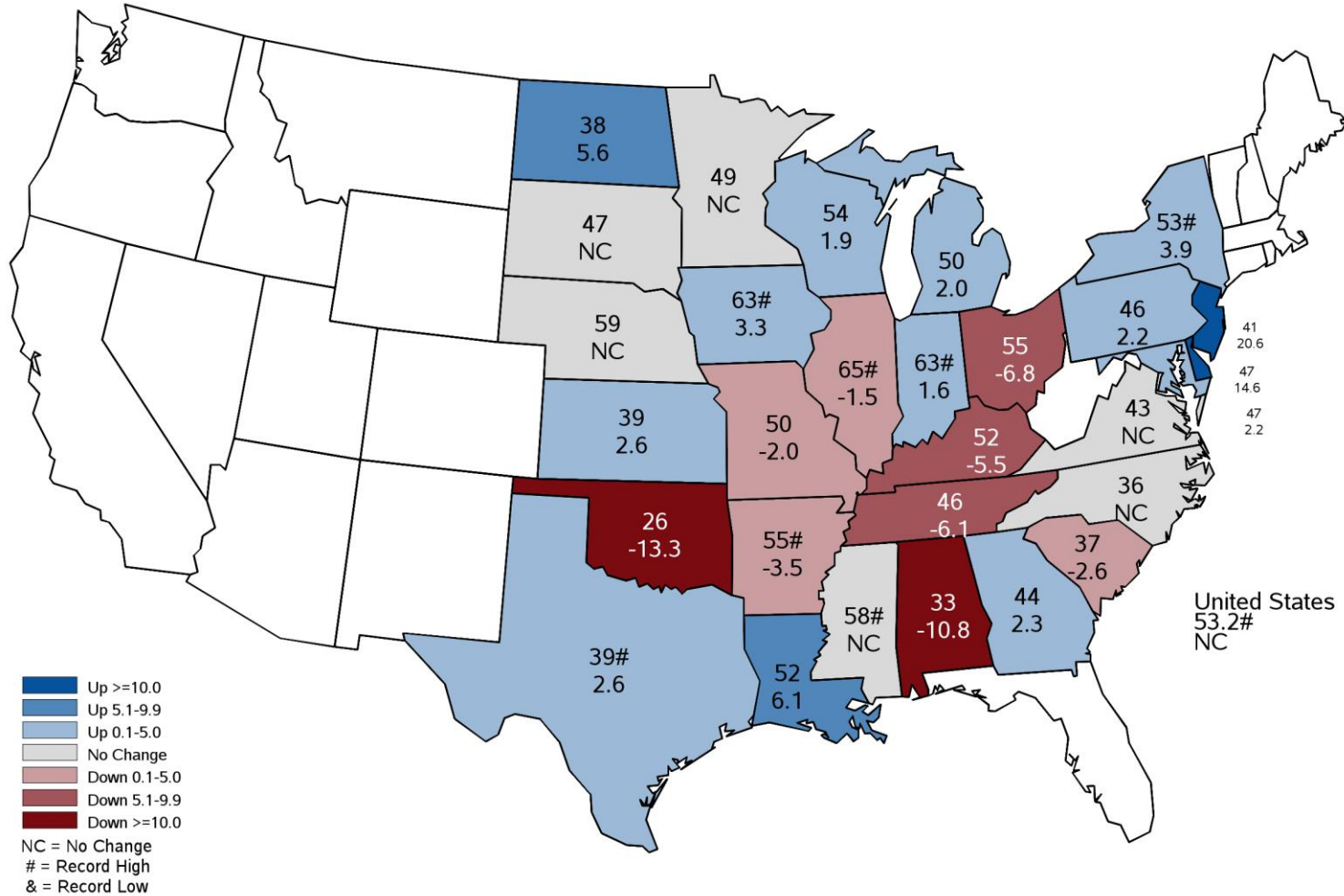
Soybean Yield United States

Bushels per Acre



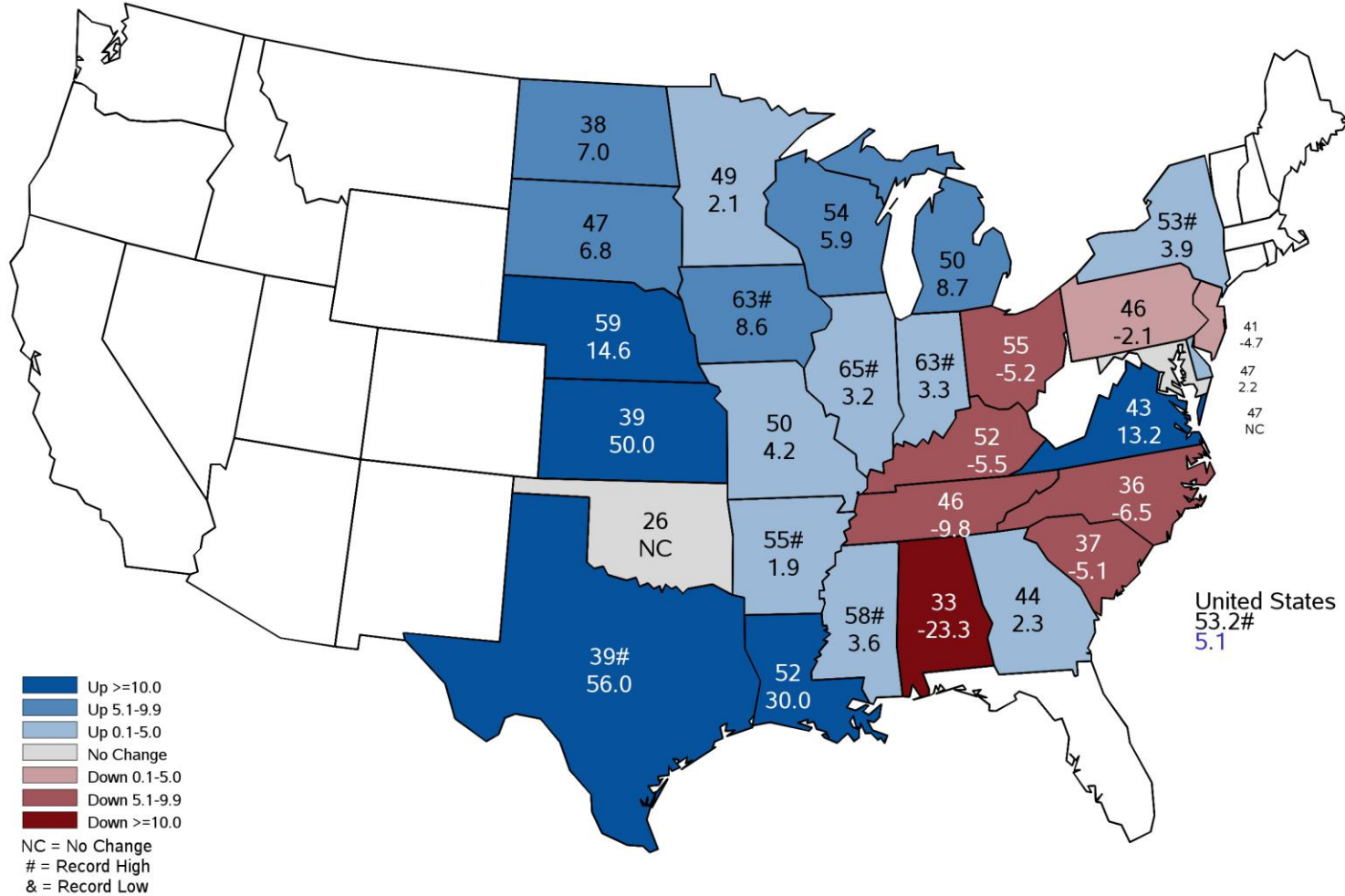
September 2024 Soybean Yield

Bushels and Percent Change from Previous Month



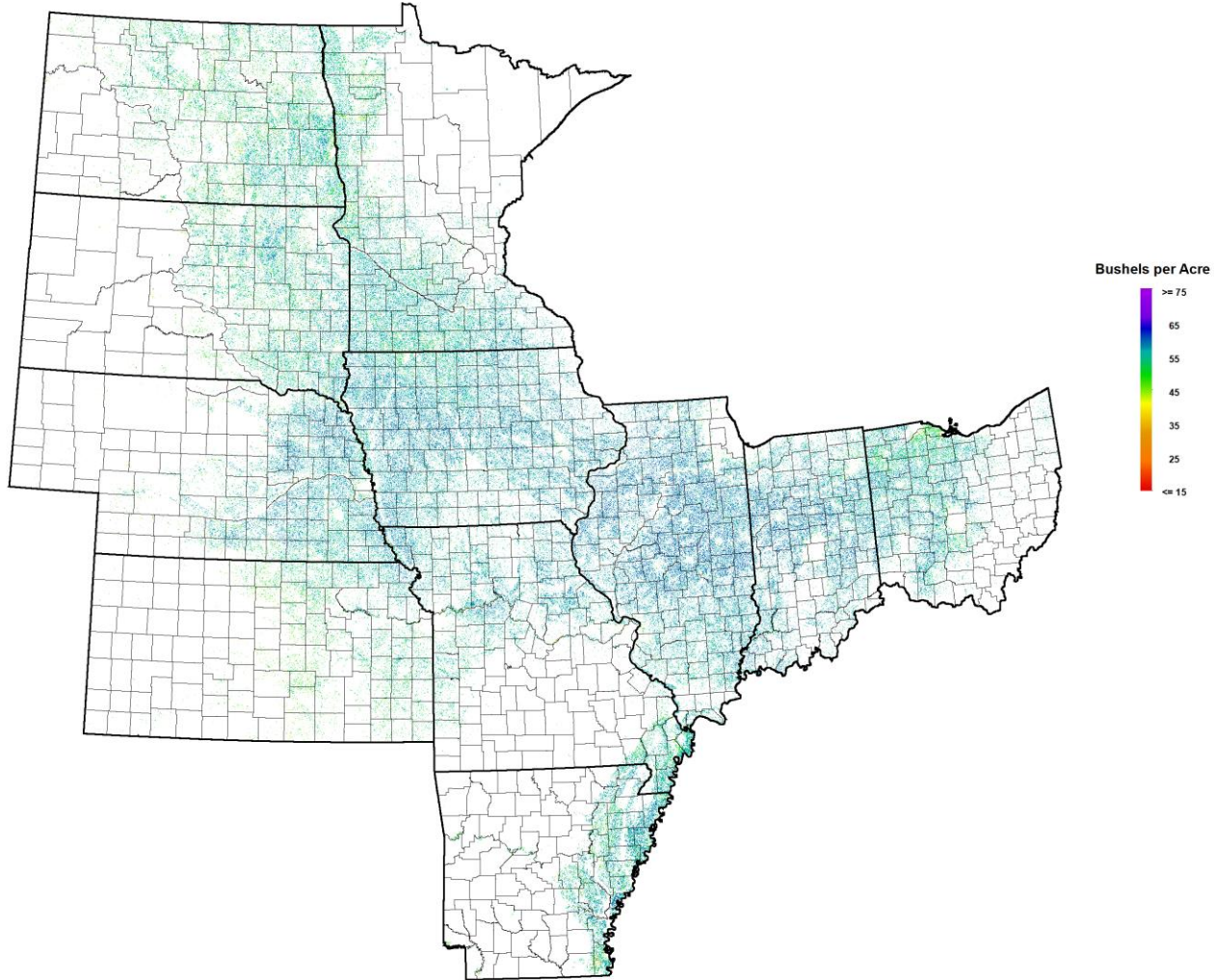
September 2024 Soybean Yield

Bushels and Percent Change from Previous Year



September 2024 Soybeans

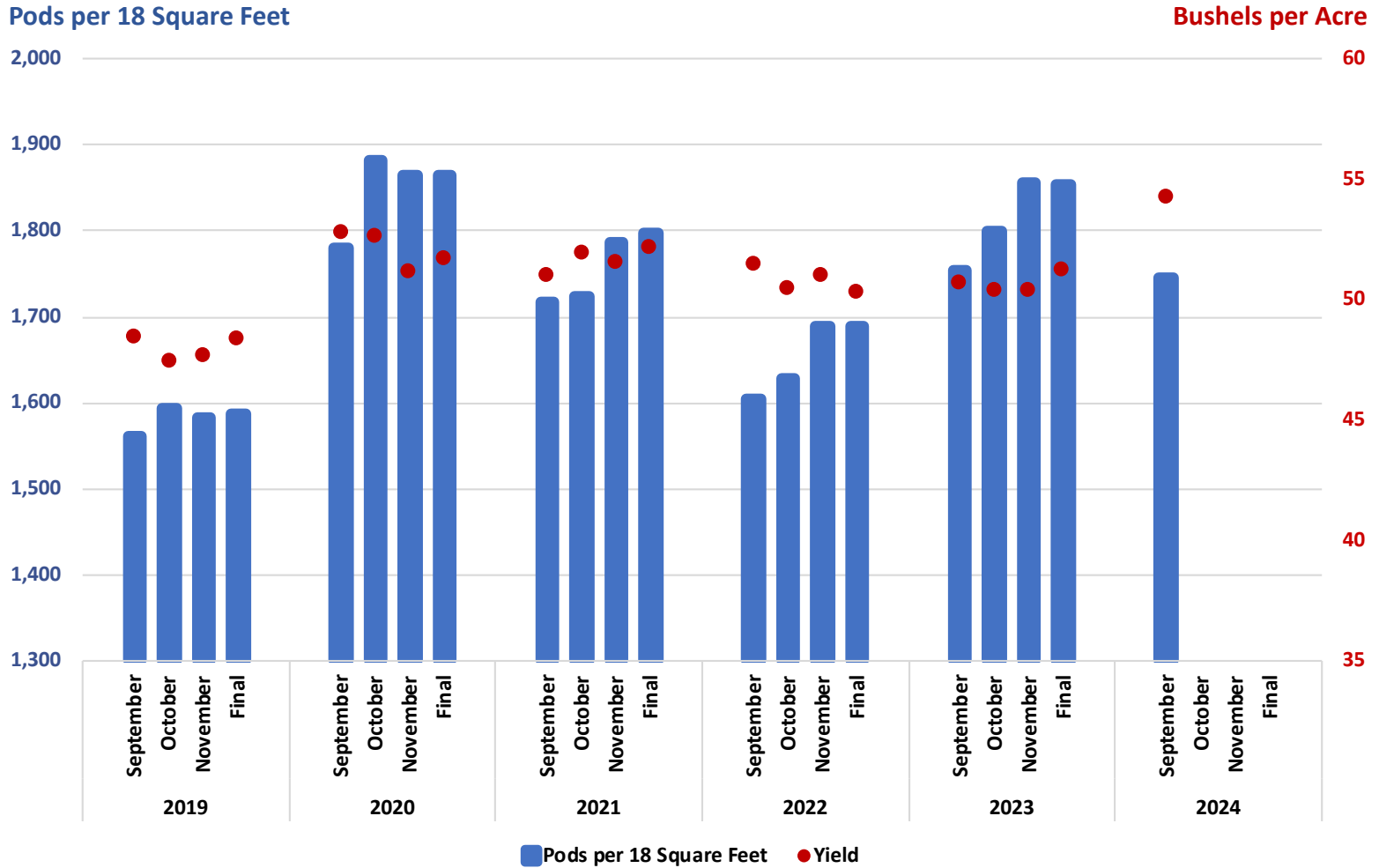
NASA Terra MODIS Modeled Yield





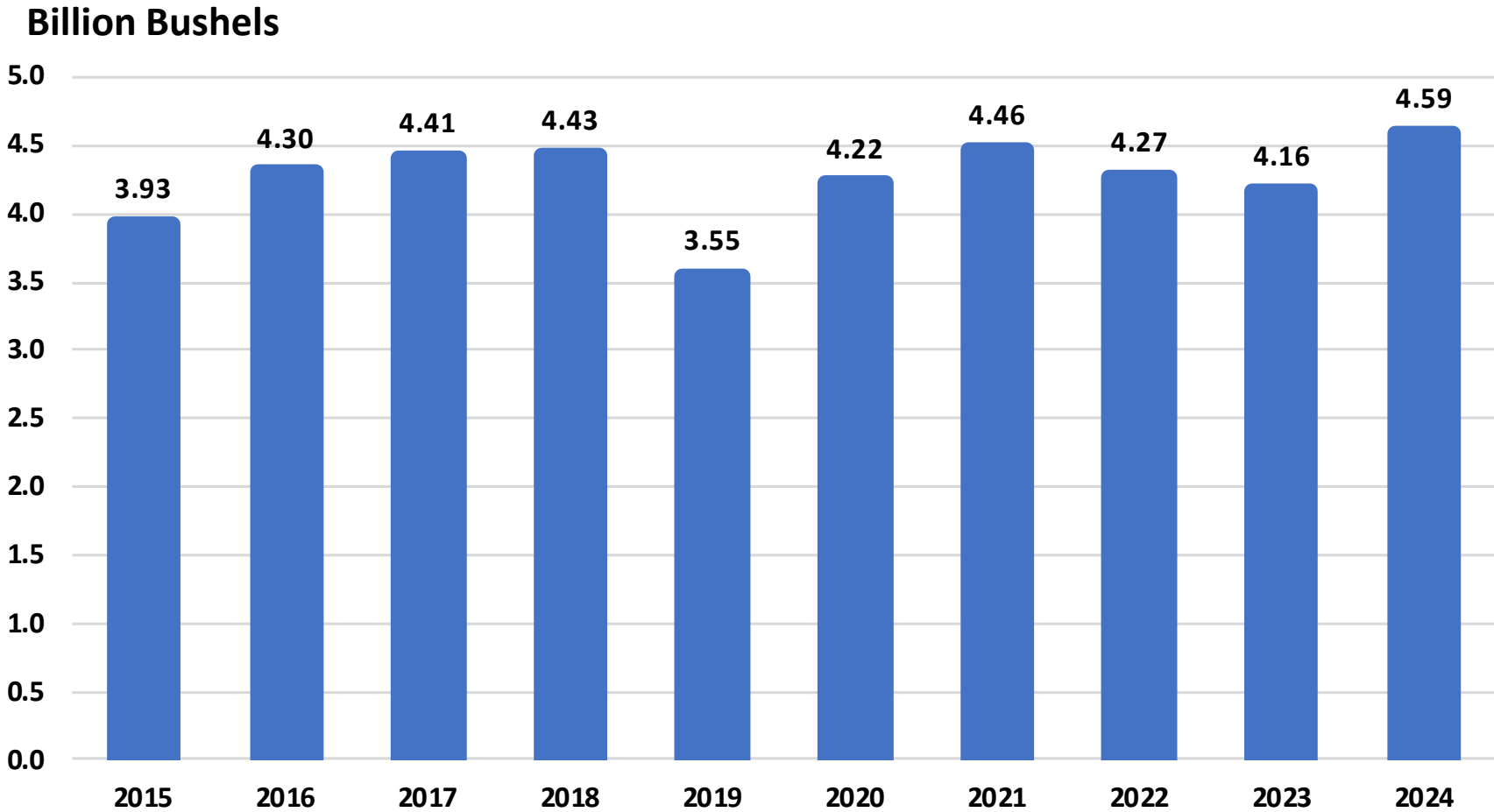
September 2024 Soybean Objective Yield

Pods per 18 Square Feet and Yield for 11 State Region



Soybean Production

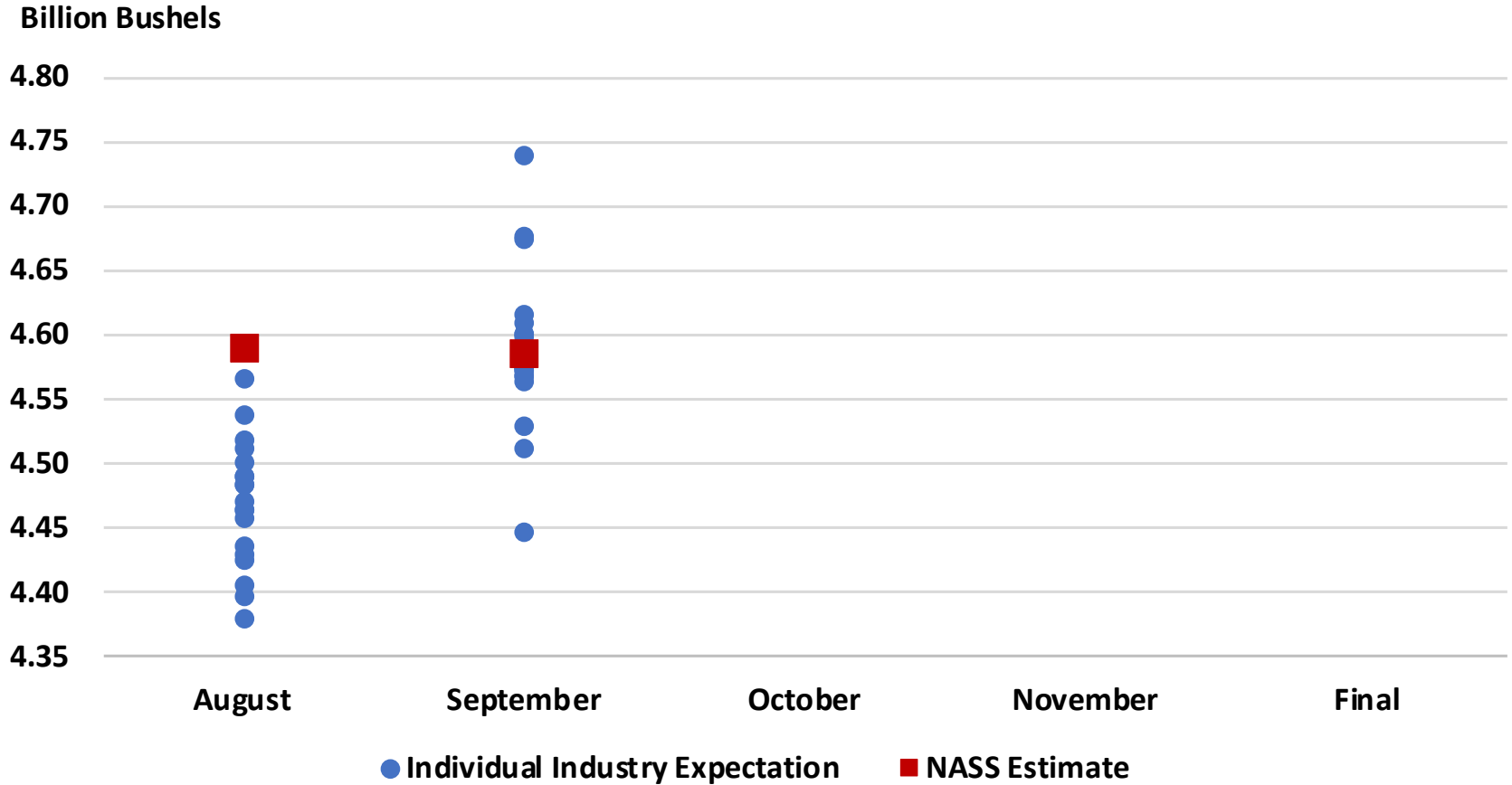
United States





2024 U.S. Soybean Production

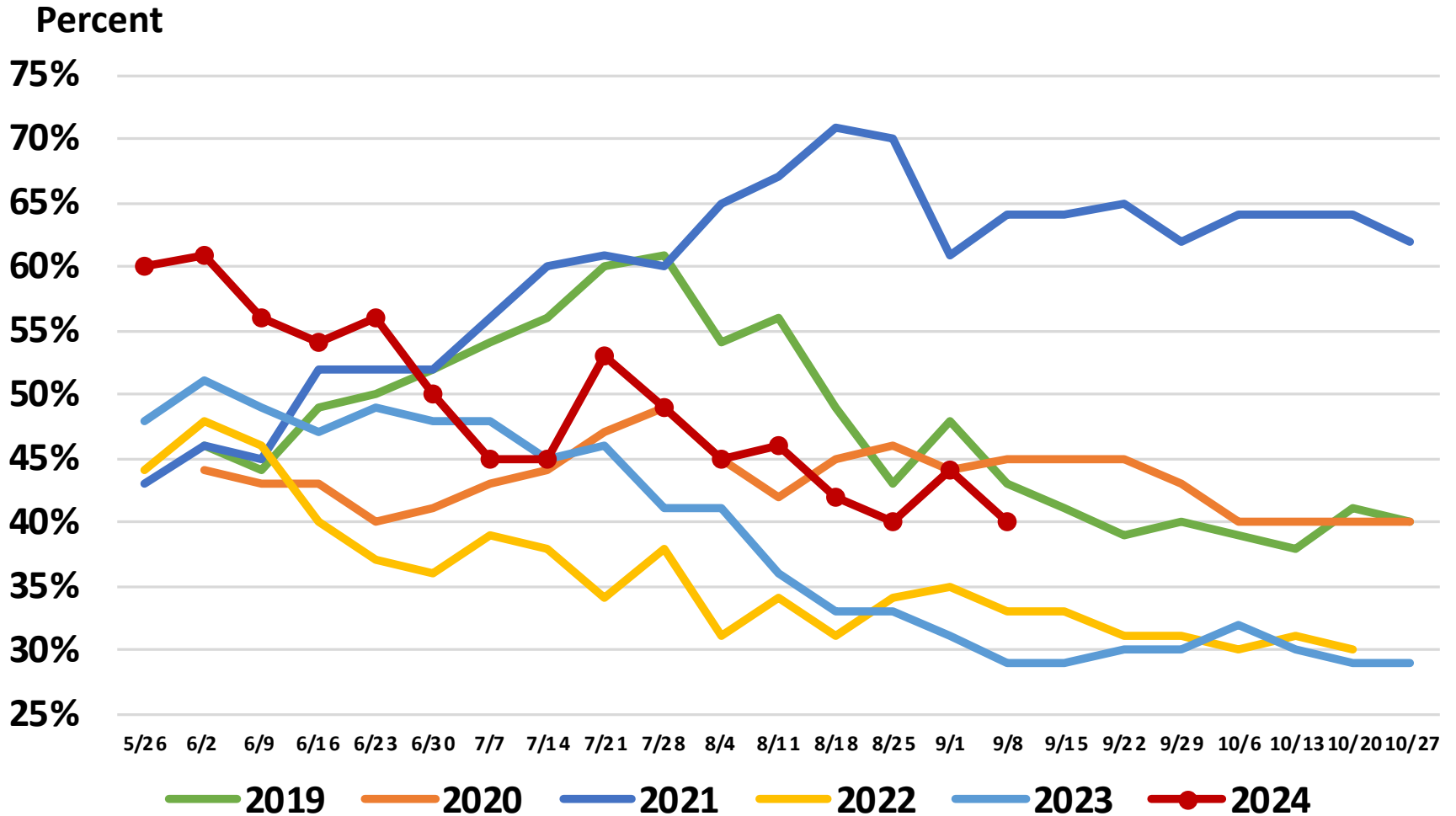
Industry Expectations vs NASS





United States Cotton Condition

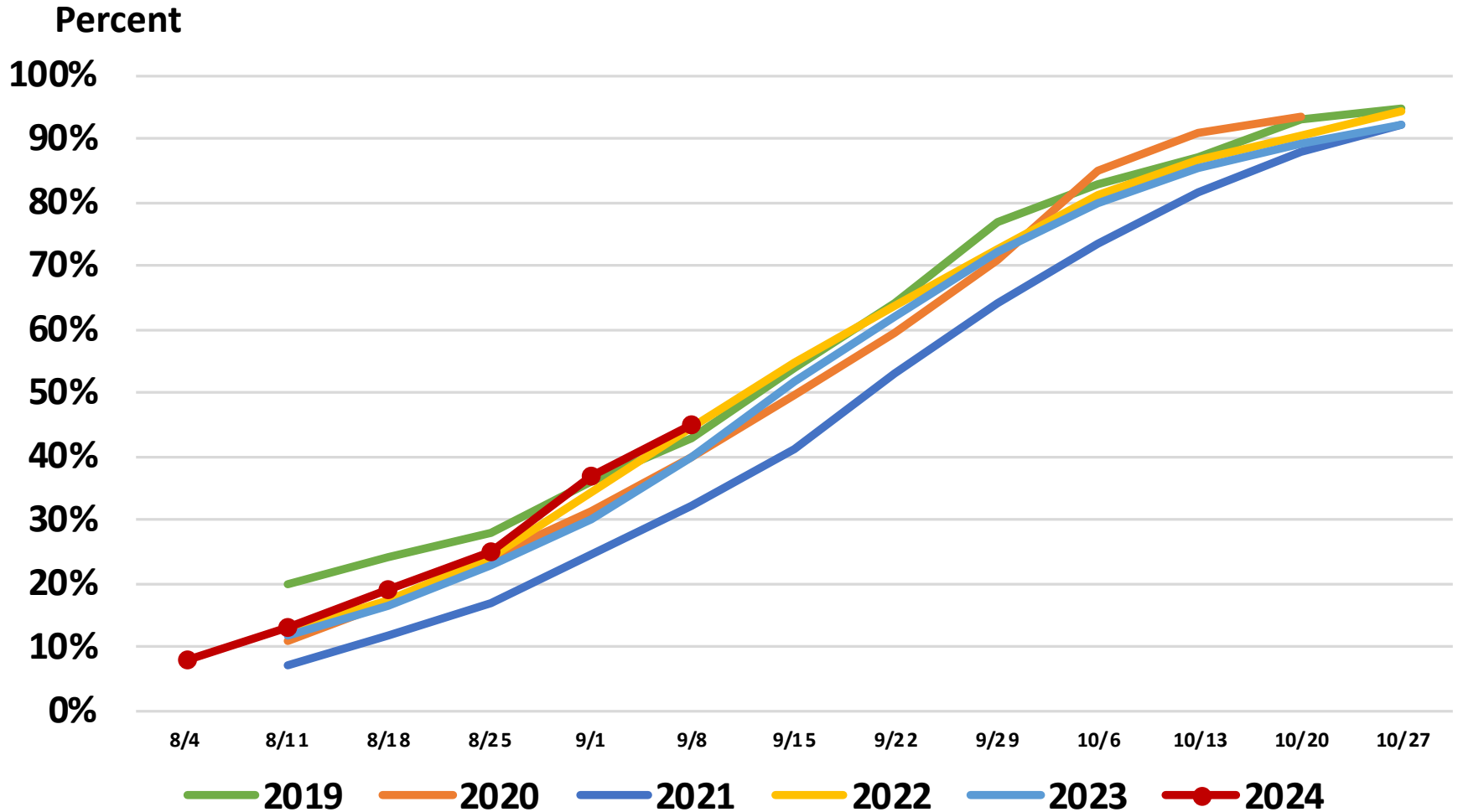
Percent Rated Good to Excellent





United States Cotton Progress

Percent Bolls Opening





September 2024 Cotton Acreage, Yield, and Production

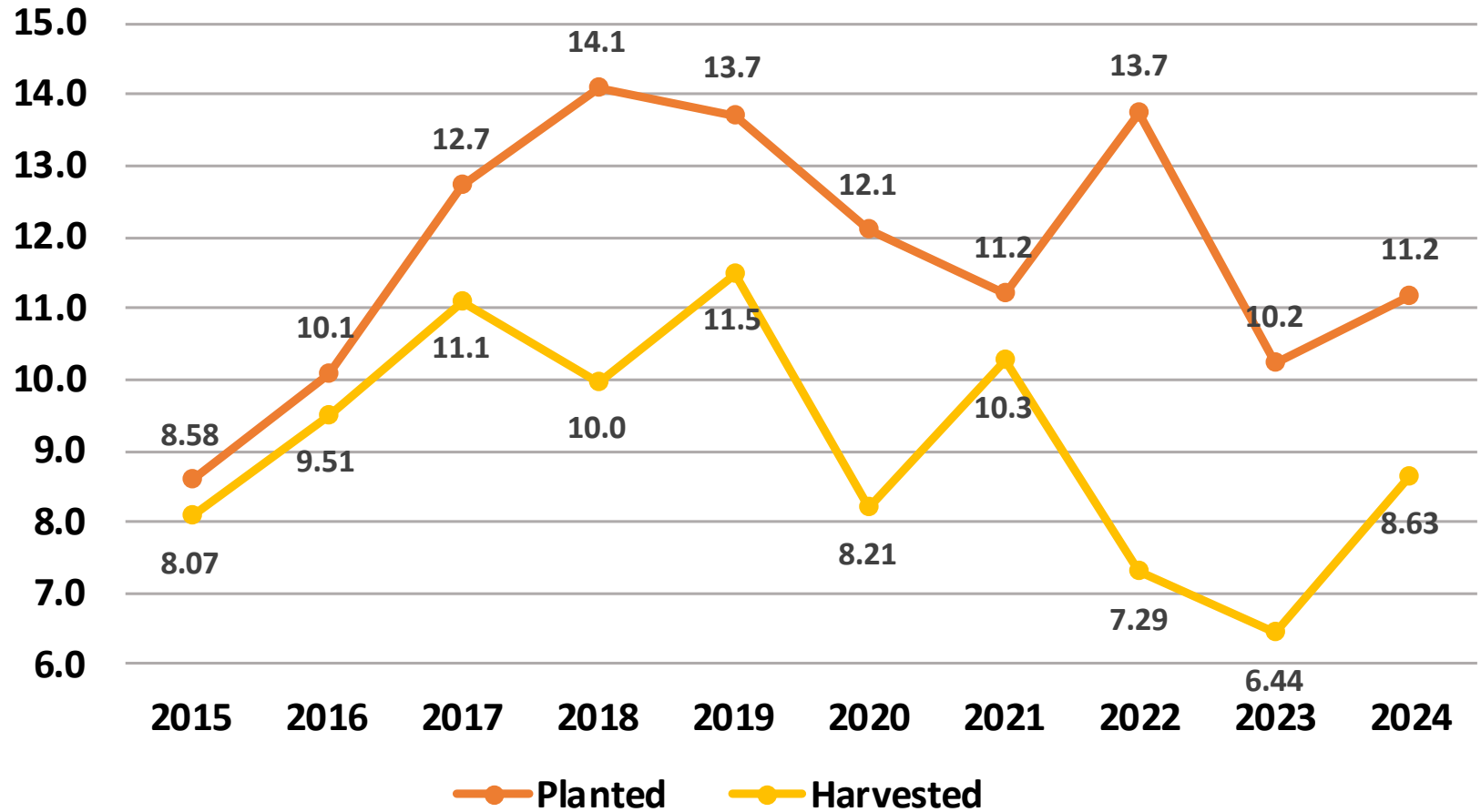
	Planted (1,000 Acres)	Harvested (1,000 Acres)	Yield (Pounds/Acre)	Production (1,000 Bales)
United States	11,174	8,635	807	14,512
% Change from Previous Estimate	↑ <0.1	↑ <0.1	↓ 3.9	↓ 3.9
% Change from Previous Season	↑ 9.2	↑ 34.1	↓ 10.2	↑ 20.3

Top 5 States - By Production										
	Planted		Harvested		Yield		Production			
	(1,000 Acres)	% Δ PY	(1,000 Acres)	% Δ PY	(Pounds/Acre)	% Δ PY	(1,000 Bales)	% Δ PY		
Texas	5,983	↑ 7.2	3,679	↑ 73.3	542.0	↓ 12.3	4,156	↑ 52.1		
Georgia	1,100	↓ 0.9	1,090	↓ 0.9	903.0	↓ 4.8	2,050	↓ 5.7		
Arkansas	650	↑ 27.5	640	↑ 26.7	1,238.0	↓ 4.4	1,650	↑ 21.1		
Mississippi	520	↑ 30.0	515	↑ 30.4	1,118.0	↑ 3.2	1,200	↑ 34.7		
Missouri	400	↑ 19.4	380	↑ 15.2	1,238.0	↓ 9.0	980	↑ 4.7		

Cotton Acres

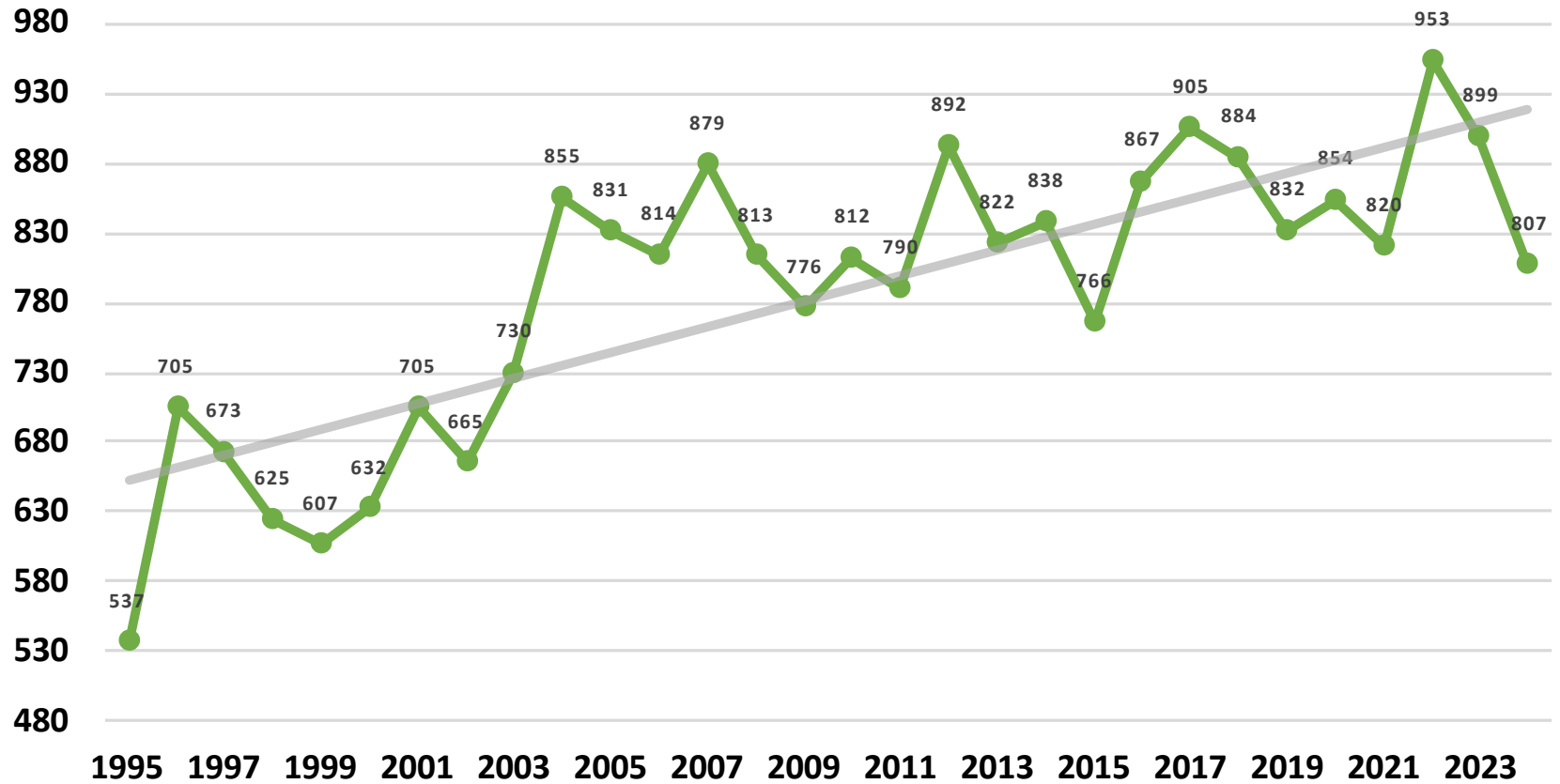
United States

Million Acres



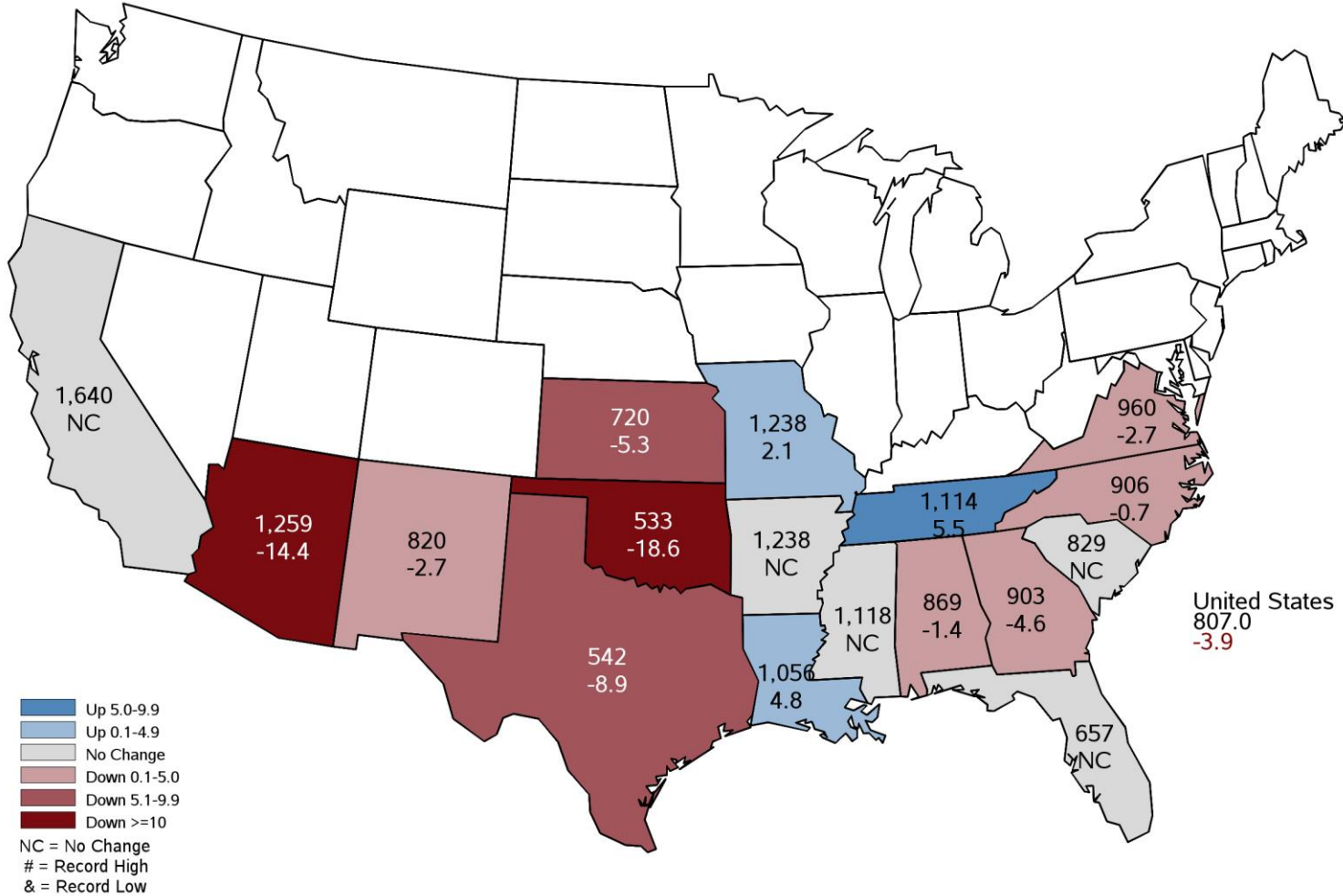
Cotton Yield United States

Pounds per Acre



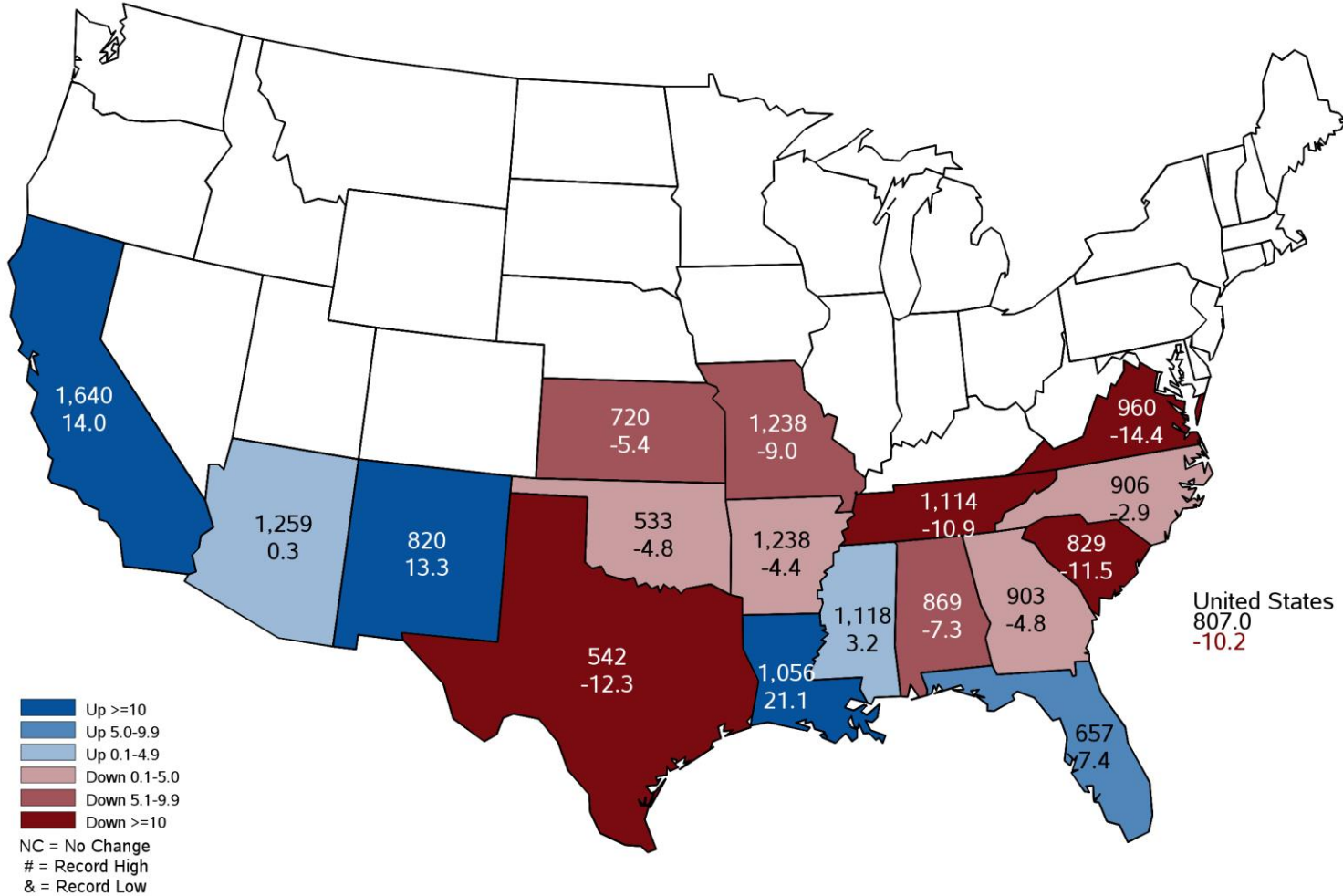
September 2024 Cotton Yield

Pounds and Percent Change from Previous Month



September 2024 Cotton Yield

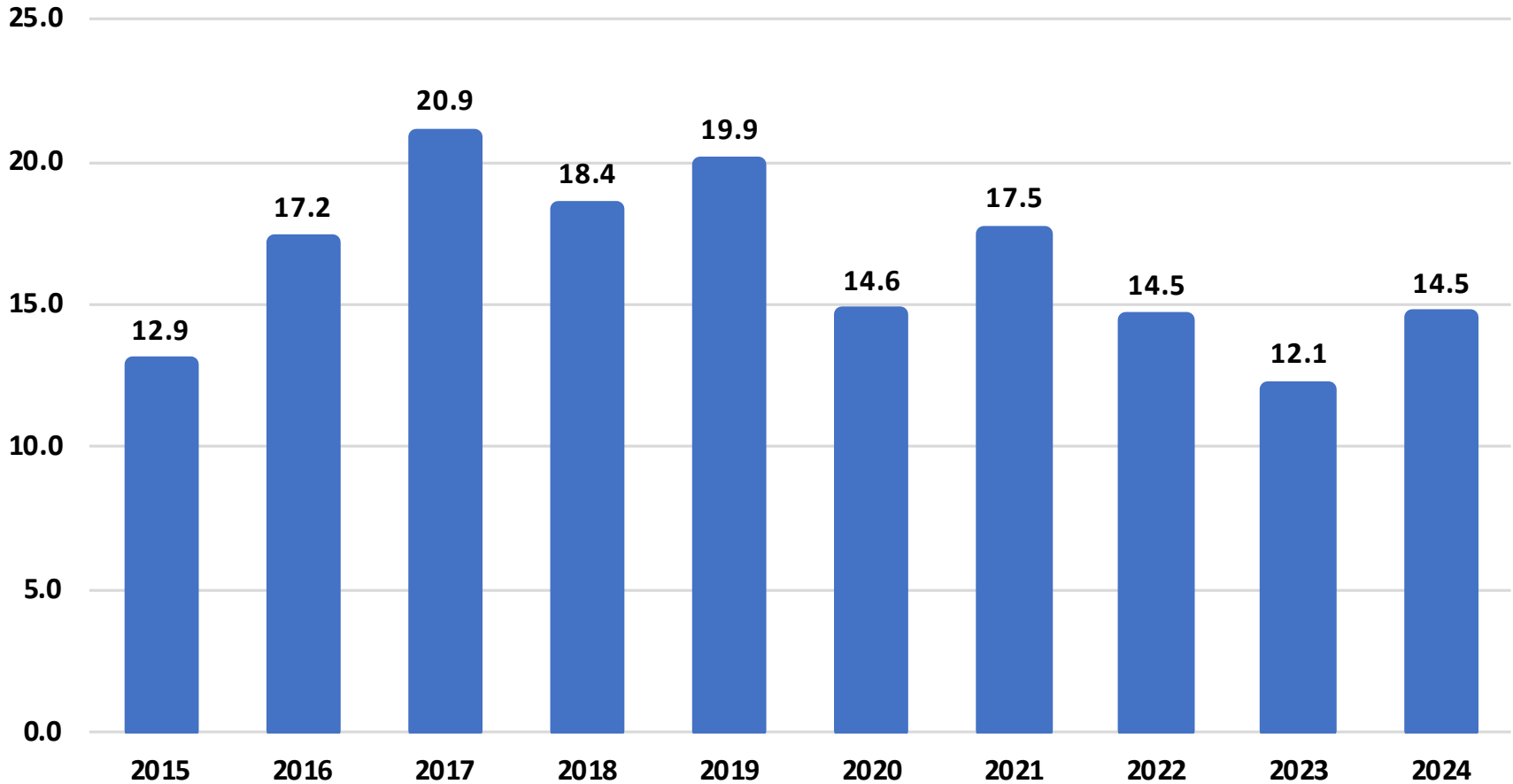
Pounds and Percent Change from Previous Year



Cotton Production

United States

Million Bales





September 2024 Field Crops

Acreage, Yield, and Production

	Planted (1,000 Acres)	Harvested (1,000 Acres)	Yield (Units per Acre)	Unit	Production (1,000 Units)	Unit
Chickpeas	504	497	1,234	Lb	6,132	Cwt
% Change from Previous Estimate	↑ 0.4	↑ 2.3	N/A		N/A	
% Change from Previous Season	↑ 35.3	↑ 38.3	↓ 6.2		↑ 29.9	
Dry Edible Peas	988	947	2,036	Lb	19,278	Cwt
% Change from Previous Estimate	↓ 4.4	↓ 4.1	N/A		N/A	
% Change from Previous Season	↑ 2.3	↑ 0.6	↑ 5.9		↑ 6.6	
Lentils	936	900	1,060	Lb	9,538	Cwt
% Change from Previous Estimate	↑ 12.0	↑ 13.9	N/A		N/A	
% Change from Previous Season	↑ 71.4	↑ 72.1	↓ 3.5		↑ 66.1	
Peanuts	1,805	1,749	3,836	Lb	6,709,800	Lb
% Change from Previous Estimate	↑ 0.3	↑ 0.3	↓ 1.4		↓ 1.1	
% Change from Previous Season	↑ 9.7	↑ 11.1	↑ 2.5		↑ 13.9	
Rice	2,940	2,896	7,588	Lb	219,749	Cwt
% Change from Previous Estimate	NC	NC	↓ 0.5		↓ 0.5	
% Change from Previous Season	↑ 1.6	↑ 1.5	↓ 0.8		↑ 0.7	



September 2024 Field Crops

Acreage, Yield, and Production

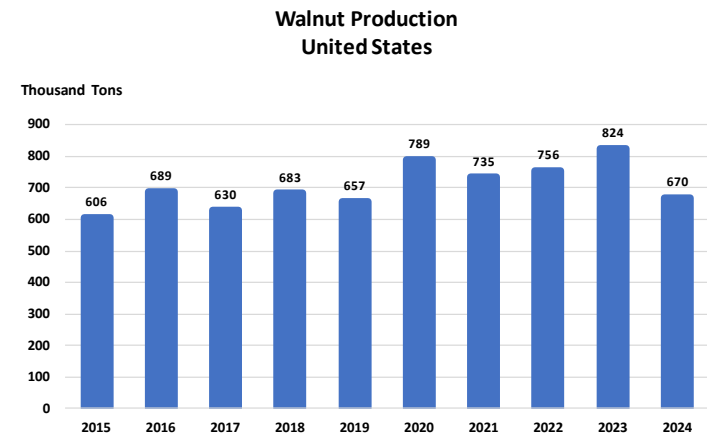
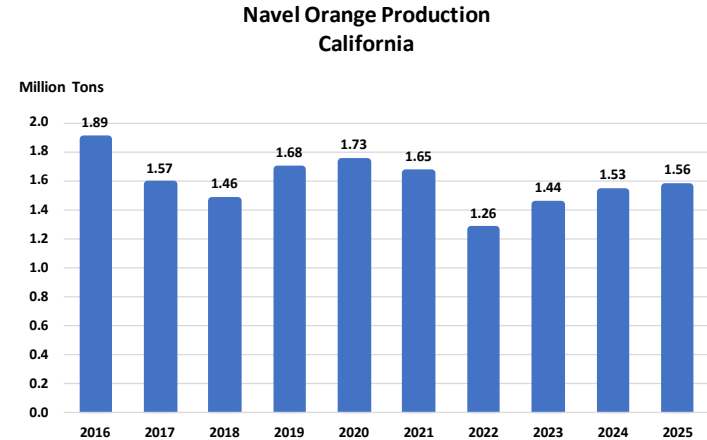
	Planted (1,000 Acres)	Harvested (1,000 Acres)	Yield (Units per Acre)	Unit	Production (1,000 Units)	Unit
Sorghum	6,300	5,275	57.3	Bu	301,995	Bu
% Change from Previous Estimate	NC	NC	↑ 8.3		↑ 8.3	
% Change from Previous Season	↓ 12.4	↓ 13.7	↑ 10.2		↓ 5.0	
Sugarbeets	1,101	1,075	32.9	Ton	35,388	Ton
% Change from Previous Estimate	↓ 0.6	↓ 1.0	NC		↓ 0.9	
% Change from Previous Season	↓ 3.2	↓ 4.6	↑ 5.4		↑ 0.5	
Sugarcane	N/A	924	38.2	Ton	35,316	Ton
% Change from Previous Estimate	N/A	↑ 0.3	↑ 3.2		↑ 3.6	
% Change from Previous Season	N/A	↓ 0.6	↑ 5.2		↑ 4.6	
Tobacco	N/A	172	2,040	Lb	351,260	Lb
% Change from Previous Estimate	N/A	↑ 0.6	↓ 6.7		↓ 6.1	
% Change from Previous Season	N/A	↓ 8.2	↓ 11.5		↓ 18.8	



September 2024 Fruits and Nuts Production



	Production (1,000 Units)	Unit
Navel Oranges (CA)	1,560	Ton
% Change from Previous Estimate	N/A	
% Change from Previous Season	↑ 2.1	
Walnuts (CA)	670	Ton
% Change from Previous Estimate	N/A	
% Change from Previous Season	↓ 18.7	





Selected Upcoming Reports



September 20	Cattle on Feed
September 26	Hogs and Pigs
September 27	Agricultural Prices
September 30	Grain Stocks Small Grains Summary
October 1	Cotton System Fats & Oils Grain Crushings
October 11	Cotton Ginnings Crop Production

<https://www.nass.usda.gov/Publications/index.php>

Data Users' Meeting



USDA Fall Data Users' Meeting

October 15 & 16, 2024

Starting at 12:00pm ET

Registration information coming soon.

STAT CHAT SERIES

Join @usda_nass on X using #StatChat to discuss the **Crop Production** report with NASS Agricultural Statistics Board Chair Lance Honig.



@usda_nass
#STATCHAT

**THURSDAY,
SEPT. 12
1 PM ET**





All Reports Available At

www.nass.usda.gov

For Questions

(202) 720-2127

(800) 727-9540

nass@usda.gov