

# Technical Transfer



Science-to-implementation tools from the Intermountain West Joint Venture and Partnering to Conserve Sagebrush Rangelands at a glance.



## Mapping Tools

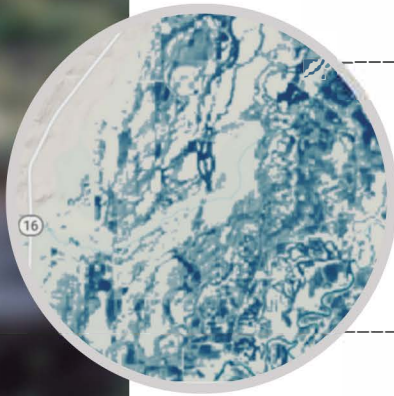
### Rangeland Analysis Platform

A fast, free online app that visualizes and analyzes **vegetation data** for the U.S. Datasets include vegetation cover, biomass, net primary productivity, and more. Developed by the University of Montana in partnership with NRCS WLFW, the BLM, and the ARS.



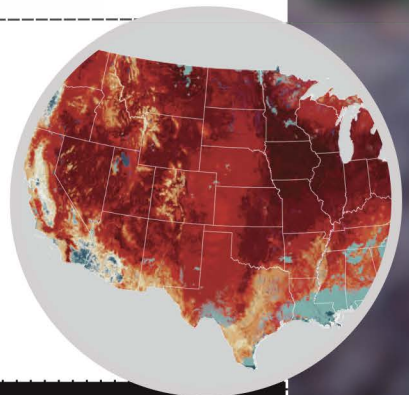
### Wetland Evaluation Tool

A spatial analysis tool that enables users to track **changes in wetland surface water** over space and time.



### Invasive Annual Grass Spatial Data Compilation and Synthesis Project

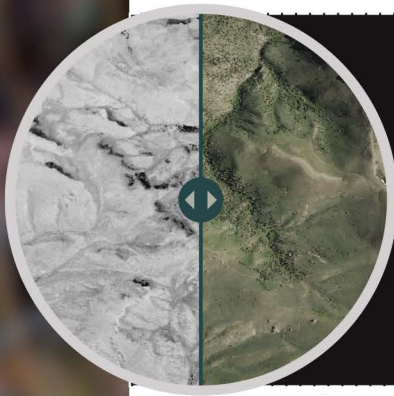
A collaborative collection and summarization of spatial datasets that describe where and how much **invasive annual grasses** have infested the sagebrush biome, developed by the USGS, the BLM, the USFWS and other partners.



### Communications Spotlight:

### "Horizon to Horizon: Improving Habitat at a Landscape Scale"

This feature article integrates *interactive maps and historical imagery* to tell the story of one of the largest conifer removal projects and partnerships focused on improving sage grouse habitat to date, the Bruneau-Owyhee Sage-grouse Habitat (BOSH) project.

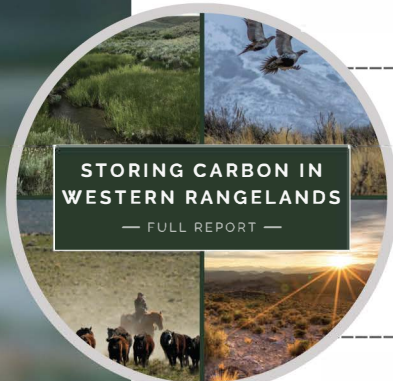


Visit [www.IWJV.org](http://www.IWJV.org) and [www.PartnersInTheSage.com](http://www.PartnersInTheSage.com) to learn more!

# Reports & Resources

## Resilient Landscapes Resource List

Our up-to-date, one-stop-shop hub for *key resources, science and tools* related to woodland management, riparian and wet meadow restoration, invasive annual grasses and wildfire, big game corridors, targeted grazing, and more.

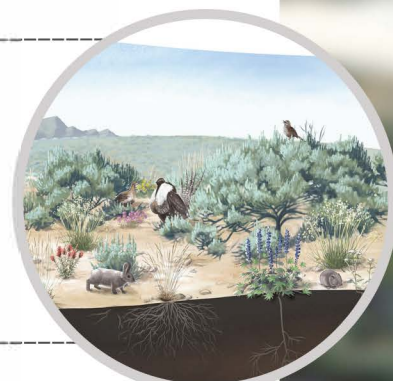


## Protecting Carbon Stored in Western Rangelands

A set of resources and science syntheses designed to tell the story of *carbon storage* in sagebrush rangelands.

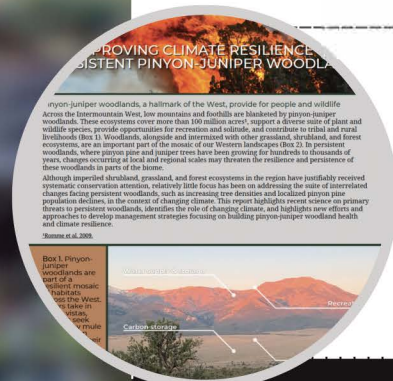
## Pinyon-Juniper Encroachment Education Project Website

A website featuring current knowledge and resources around *woodland encroachment* in native grass- and shrublands created and funded by the University of Nevada, Reno Extension, NRCS WLFW, the BLM, and the IWJV.



## Improving Climate Resilience of Persistent Pinyon-Juniper Woodlands

This short report synthesizes recent science on the primary threats to persistent woodlands, and highlights new approaches to developing management strategies for building *pinyon-juniper woodland health and climate resilience*.



### Outreach Spotlight:

## Low-Tech Restoration Workshops

We co-host low-tech restoration workshops with partners, both virtually and in the field, to increase understanding of how simple hand-built structures can *protect and restore* mesic wet meadow habitat. Virtual modules of our Zeedyk workshops can be viewed online.



## Get support from the Science to Implementation Team

The IWJV Science to Implementation (S2I) Team supports our partners in accessing, interpreting, and applying science, data, tools, and information to strengthen conservation outcomes. A few of the many ways our team can help you include:

- One-on-one technical assistance*
- Science synthesis*
- Assistance using decision-support tools and spatial data*
- Facilitation of co-produced science*

Reach out to Andrew Olsen, Science to Implementation Coordinator ([andrew.olsen@iwjv.org](mailto:andrew.olsen@iwjv.org)), or Mariah McIntosh, Science to Implementation Specialist ([mariah.mcintosh@iwjv.org](mailto:mariah.mcintosh@iwjv.org)) to learn more!