

Supplementary Material

An integrated framework for habitat restoration in fire-prone areas: part 1 – co-creation of land management scenarios

P. Maia^{A,*}, *S. Corticeiro*^B, *R. Vaz*^C, *P. M. Fernandes*^{D,E}, *S. Valente*^E, *J. Keizer*^F, *S. C. Pereira*^C and *D. Carvalho*^C

^ADepartment of Biology and Centre for Environmental and Marine Studies, Universidade de Aveiro, Campus Universitário de Santiago, Aveiro, 3810-193, Portugal

^BDepartment of Environment and Planning and Centre for Environmental and Marine Studies, Universidade de Aveiro, Campus Universitário de Santiago, Aveiro, 3810-193, Portugal.
Email: sofiacorticeiro@ua.pt

^CDepartment of Physics and Centre for Environmental and Marine Studies, Universidade de Aveiro, Campus Universitário de Santiago, Aveiro, 3810-193, Portugal. Email: ricardojorgevaz@ua.pt, susana.cardoso@campus.ua.pt, david.carvalho@ua.pt

^DCITAB – Centre for Research and Technology in Agro-Environmental and Biological Sciences, University of Trás-os-Montes and Alto-Douro, Vila Real, 5000-801, Portugal.
Email: pfern@utad.pt

^ECoLAB ForestWISE – Collaborative Laboratory for Integrated Forest and Fire Management, Vila Real, 5001-801, Portugal. Email: sandra.valente@forestwise.pt

^FDepartment of Environment and Planning and Geobiotech, Universidade de Aveiro, Campus Universitário de Santiago, Aveiro, 3810-193, Portugal. Email: jjkeizer@ua.pt

*Correspondence to: Email: paula.maia@ua.pt

Supplementary Material

A. Data points used as presences in the species distribution models in MaxEnt

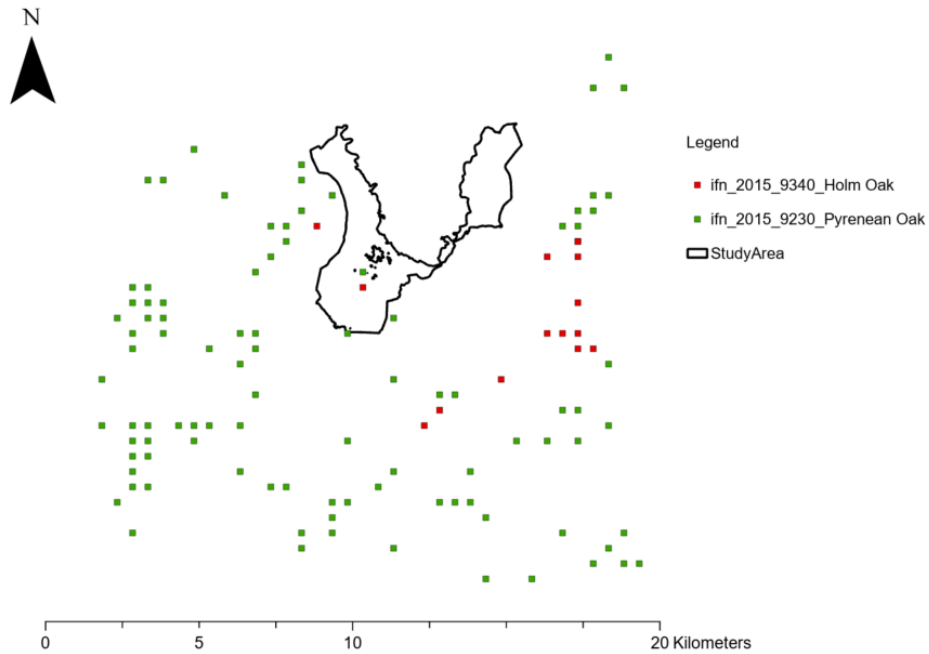


Figure S1. Data points used as presences in the species distribution, sourced from the National Forest Inventory.

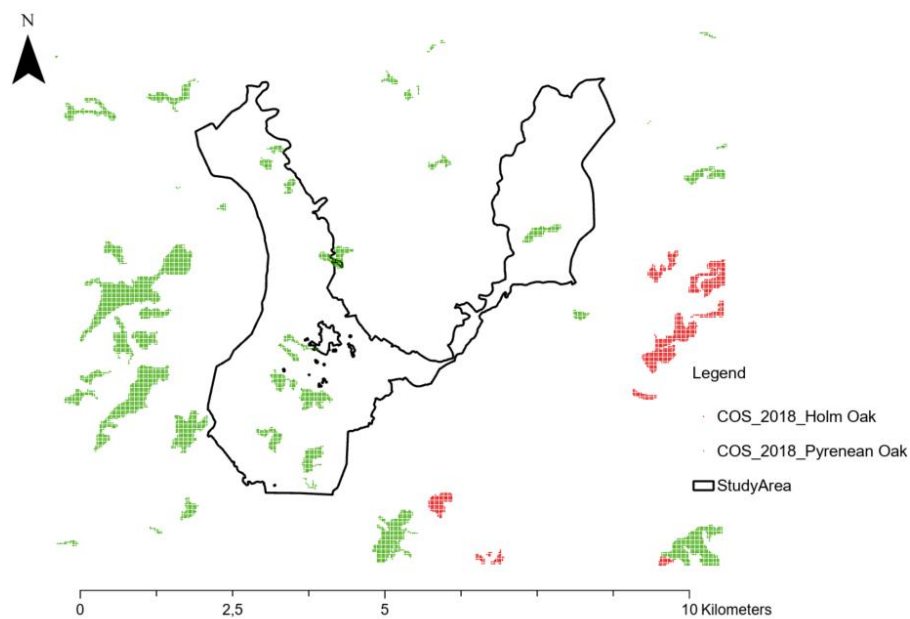


Figure S2. Data points used as presences in the species distribution, sourced from the Land Use Cartography.

B. Raster results of the potential distribution habitats 9340 (holm oak) and 9230 (pyrenean oak).

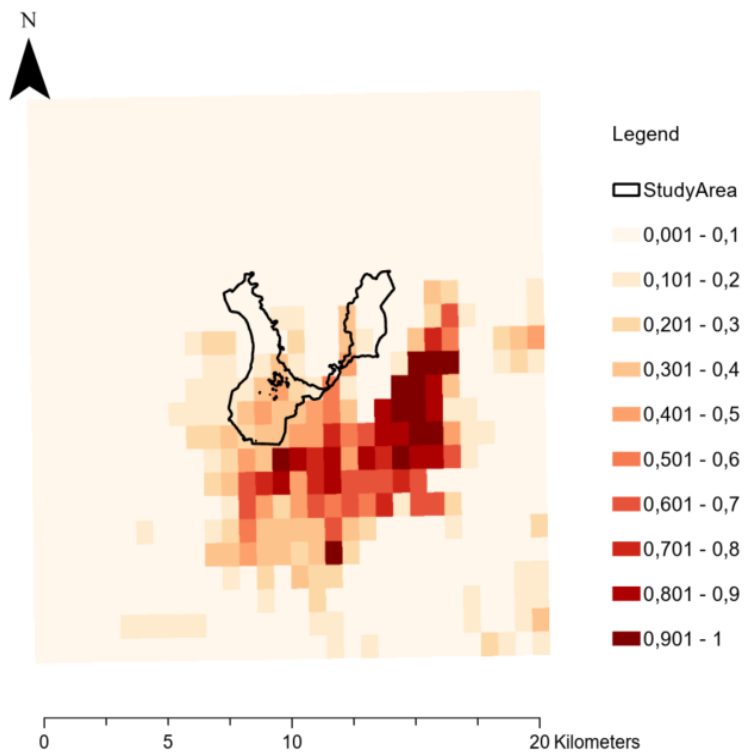


Figure S3. Raster of the potential distribution of habitat 9340 (holms oak).

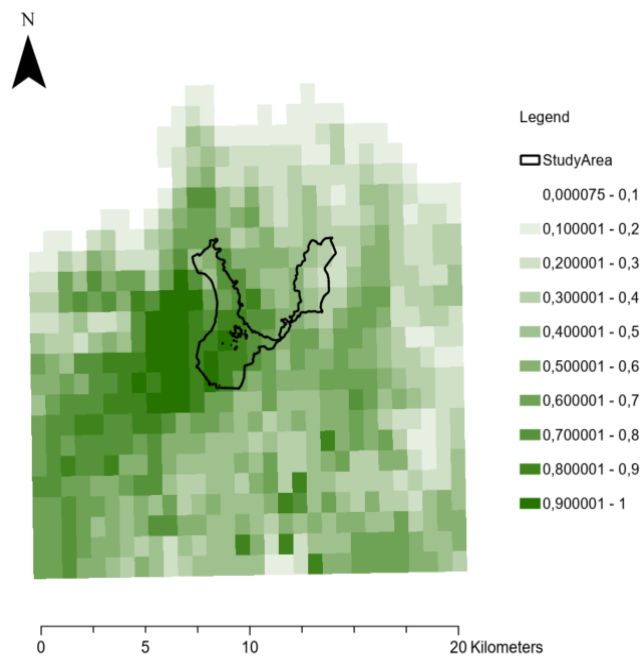


Figure S4. Raster of the potential distribution of habitat 9230 (pyrenean oak).