



January 2023

Brett Wolff, Editor
Christy Cassady, Editor/Designer

Eastern KY Conference features diverse program

From the Community Farm Alliance website

The 2023 Eastern Kentucky Farmer Conference will be held Friday, February 24th through Saturday, February 25th at Pine Mountain State Park, near Pineville in Bell County.

Topics include Protecting Your Investment, Recovery and Rebuilding, Growing an Herb Business, The Efficient Vegetable Farmer (all panel discussions), How to Establish Your Farm Business, Setting up for SNAP, Pollinators on the Farm, Basic Funding Resources, Cover Crops for Nutrient Management, Compost, and more. Speakers include farmers, county extension agents, and representatives of a number of agriculture agencies, including the Kentucky Center for Agriculture and Rural Development, the Kentucky Department of Agriculture, Natural Resources Conservation Service, Farm Service Agency, and Kentucky Farm Bureau. For more information, [click here](https://www.facebook.com/EasternKYFarmerConference). For conference updates, visit <https://www.facebook.com/EasternKYFarmerConference>. For registration and lodging information, [click here](https://www.facebook.com/EasternKYFarmerConference). Questions? Contact Laurie White, Community Farm Alliance's Central Kentucky Local Food Coordinator, at laurie@cfaky.org.



Pre-Conference Event

EKY Grower-Buyer Meetup. Details on Page 3.

What's inside

New Fruit Scout Website ... 2
CCD resources update 5

Coming up

Feb. 16-18 - Ohio Ecological Food and Farm Association (OEFFA) Conference, Newark, OH. For details, visit <https://conference.oeffa.org>.

Feb. 16-18 - PickTN Conference, Franklin, TN. For details, go to <https://www.picktnconference.com>.

Feb. 21-23 - Kentucky Turf & Landscape Management Short Course, Elizabethtown. See **Page 4**.

Feb. 22-25 - West Virginia Small Farms Conference, Charleston, WV. For more information, visit <https://extension.wvu.edu/conferences/small-farm-conference>.

March 2-3 - Indiana Small Farm Conference, Danville, IN. For more information, go to <https://extension.purdue.edu/anr/teams/dffs/small-farm-conference/sfc-2023.html>.



New Fruit Scout Website allows easier access to IPM Scouting Guides

By Kim Leonberger, Plant Pathology Extension Associate and Nicole Gauthier, Extension Plant Pathologist

The IPM Scouting Guide publications for fruit crops were converted into mobile compatible websites beginning in 2017. Now accessing this information is even easier with the creation of the Fruit Scout Website (<https://fruitscout.ca.uky.edu>). This new website provides access to the information found on the Apple, Bramble, Grape, Peach, and Strawberry Scout websites all in one place. The Fruit Scout Website is available for grower, agent, and homeowner use and can be accessed from any phone, tablet, iPad, or computer. The website provides users the opportunity to first select a crop based scouting guide (Figure 1). Next, the home page for each crop (Figure 2) allows visitors to select a problem area. Finally, users select from a menu of various diseases, pests, or problems to obtain more information and view images (Figure 3).



Figure 1: Fruit Scout Website home page. (Kim Leonberger, UKY)

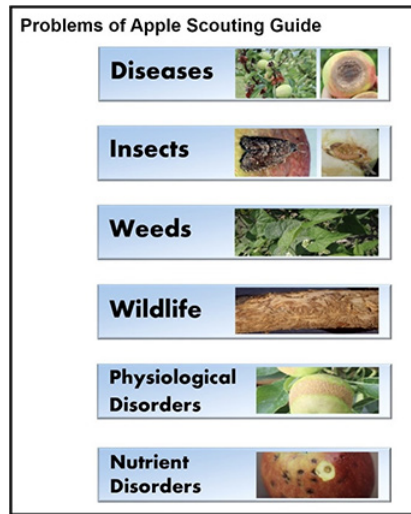


Figure 2 (left): Visitors select a problem area within each crop group. (Kim Leonberger, UKY)

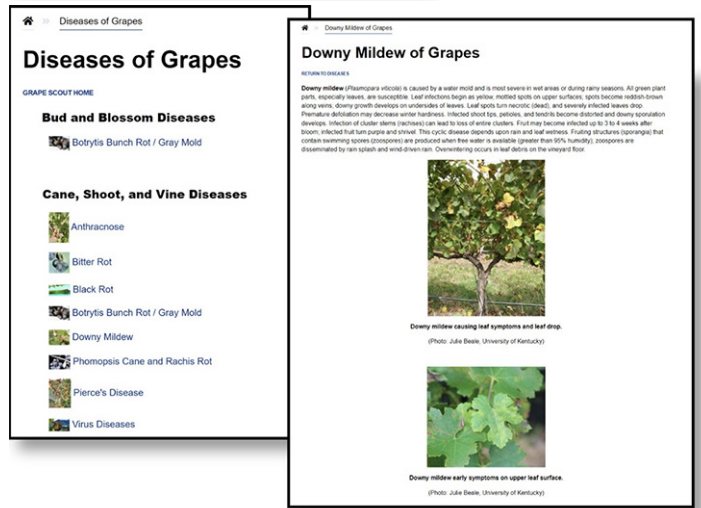


Figure 3 (below): Users can select a specific disease or pest to obtain more information. (Kim Leonberger, UKY)

Please note that as of February 28th, 2023, the following websites will become inaccessible and will be permanently replaced by the Fruit Scout Website (<https://fruitscout.ca.uky.edu>). Be sure to bookmark this website for easy access in the future.

- Apple Scout - <http://applescout.ca.uky.edu/>
- Bramble Scout - <https://bramblescout.ca.uky.edu/>
- Grape Scout - <https://grapescout.ca.uky.edu/>
- Peach Scout - <https://peachscout.ca.uky.edu/>
- Strawberry Scout - <https://strawberryscout.ca.uky.edu/>

KSU establishes regional water testing labs to help farmers with FSMA requirements

From the Organic Association of Kentucky

Kentucky State University has established regional water testing labs for farmers wishing to have their irrigation water sources tested. This is a voluntary program to help farmers become familiar with some of the water quality requirements that may be required under the Food Safety Modernization Act (FSMA). The water tests are

free to farmers, and results are available within one week of dropping off samples at the lab. Results can supplement farmers' Farm Safety Plan, Agriculture Water Quality Plan (AWQP) and other relevant recordkeeping needs. Contact Kevin Gurtowski - kevin.gurtowski@ksu.edu or John Thomas - john.thomas1@ksu.edu for more information.

CSA Week starts February 20th

From the Kentucky Horticulture Council website

Do you want to learn more about CSA (community supported agriculture) aka local food subscriptions? Where to find one? How to cook with seasonal ingredients? Join us for KY Proud CSA week!

This is a week of online resource sharing to connect Kentucky consumers with over 65 farms across the bluegrass and make it easy and convenient to find local foods in your area.

How to take part in 2023 KY Proud CSA week:

1. Become a member of the CSA in Kentucky Facebook group here, <https://www.facebook.com/groups/kycsafair/>.
2. Each day of KY Proud CSA Week (Feb. 20th-24th) check out different resources to save and share in

Grower-Buyer MeetUp an opportunity to make sales connections

From the Kentucky Horticulture Council Facebook page

The Eastern Kentucky Grower-Buyer MeetUp, a pre-Eastern Kentucky Farmer Conference event, is scheduled for 10 a.m.-noon on February 24th at Pine Mountain State Park in Pineville.

Opportunities for selling Kentucky-grown ag products are increasing, and finding the best buyer match is important for a profitable relationship. This Grower-Buyer MeetUp will be the single largest event bringing together buyers and agricultural food producers, and is co-hosted by the Kentucky Department of Agriculture, the Kentucky Center for Agriculture and Rural Development, the Kentucky Horticulture Council and UK MarketReady, with the Kentucky Vegetable Growers Association, and the Kentucky State Horticultural Society.

Buyers include chefs, retail, and distribution representatives. Annually, more than 30 buyers attend this event, representing businesses such as Creation Gardens, Kroger, Walmart, Houchens, AWG, Whole Foods, Good Foods Co-op, and other distributors who reach all levels of grocery outlets. Agricultural producers of “retail ready” food products, such as fruits and vegetables, value-



the CSA in KY Facebook group.

3. Ask questions and share other tips in the Facebook group to learn more about CSAs in your area and what might work best for you.

This event is organized by Kentucky Proud and the Kentucky Department of Agriculture, Edible Kentucky and Southern Indiana Magazine, Kentucky Horticulture Council, Organic Association of Kentucky, and The Food Connection.



added products, meats and dairy, are encouraged to attend.

Growers will have a chance to meet one-on-one in a “speed date” format to exchange contact information and match up products and needs with key buyers. Face-to-face meetings with experts in food safety, organic production, and marketing will also be available.

Check-in starts at 9:30 a.m. EST with buyer introductions beginning promptly at 10 a.m. The event is free, but you must pre-register at https://www.eventbrite.com/e/2023-eky-grower-buyer-meetup-tickets-523919566527?aff=efbeventtix&fbclid=IwAR2jck-aawqjd9KD24UJZbmmE-zBpKM-FVsAj0up9rQJ_YZvWbWug8AK4Mcw.

Short Course offers extensive turfgrass management training

From the Kentucky Horticulture Council website

The annual Kentucky Turf & Landscape Management Short Course is the premier educational event for Kentucky turfgrass professionals. Meeting organizers have planned an excellent program for February 21st-23rd, with more than 20 speakers and three educational tracks covering sports turf, golf course, and lawn and landscape topics as well as a business management track.

The University of Kentucky Turfgrass Program, in cooperation with the Kentucky Horticulture Council is excited to announce registration is open for the short course, which, will be held in person at the Hardin Co Extension Center in Elizabethtown.

University of Kentucky specialists will be presenting sessions on pest control (insect, weed, and pathogen), water topics, ornamentals, and nutrient management. Several excellent out-of-state speakers are on the program including Jackie Guevara (Michigan State University), Dr. Bill Kreuser (University of Nebraska-Lincoln), and Dr. David Gardner (Ohio State University) as well as local industry speakers Robert Hoffman (Roundstone Native Seed), Eric Harshman (Transylvania University), and Alan Mark (Barenbrug Seed Company).

The short course registration fee is \$40 per day. The full conference program, information about

UNIVERSITY OF KENTUCKY TURFGRASS SCIENCE PROGRAM & KENTUCKY HORTICULTURE COUNCIL INVITE YOU TO ATTEND THE

46th Annual Turf & Landscape Management
Short Course

Feb. 21-23, 2023
Hardin County Extension Center
Elizabethtown, KY

TUESDAY
Pesticide Certification Course & Exam

WEDNESDAY & THURSDAY
Concurrent sessions:
• Commercial Lawn & Landscape
• Golf
• Sports Turf

\$40 BEFORE FEB. 17
per day

Pesticide CEUs available

Scan to register

pesticide CEUs, and registration instructions are available on the [Short Course web page](#). Registration is available from the event page and online through [Eventbrite](#) or by mailing in the meeting registration form by Friday, February 10th. After this date, you may continue to register online until Friday, February 17th. If space allows, on-site registration will be available at \$60 per day.

A pre-conference pesticide training with certification testing through the Kentucky Department of Agriculture is available on Tuesday, February 21st. The training is \$40 and the test fee is \$25 and must be paid on-site.

For registration questions call 859-490-0889 or email info@kyhortcouncil.org.

Save the Date

2023
AGRICULTURE
DIRECT
MARKETING
SUMMIT

Virtual
March 13-14

CCD resources update

Maps page now includes do-it-yourself tool; crop profile updates include truffles, willow

The Center for Crop Diversification website has a redesigned maps page, which now includes a [Custom Mapping Resources](#) section to help users to learn to develop their own digital maps using online tools and information. Also new are monthly average day length maps, which have been added to the [Printable Maps](#) section of the page. The maps page also hosts interactive maps, including a [Geographic Horticulture Directory of Kentucky](#) and an [Agricultural Service Provider Directory](#).

Crop profiles that have been updated recently are

Cooler than average start to February, wetter throughout

By Joshua Knight, Sr. Extension Associate, Horticulture

The NOAA's Climate Prediction Center is calling for an above average chance of cooler than average temperatures for the first days of February. As we move further into the month, the predictions are less clear with mid-month forecasts calling for equal chances of above and below normal temperatures. The overall forecast for February shows a likelihood of above normal temperatures, which may mean the latter half of the month could be warmer than average.

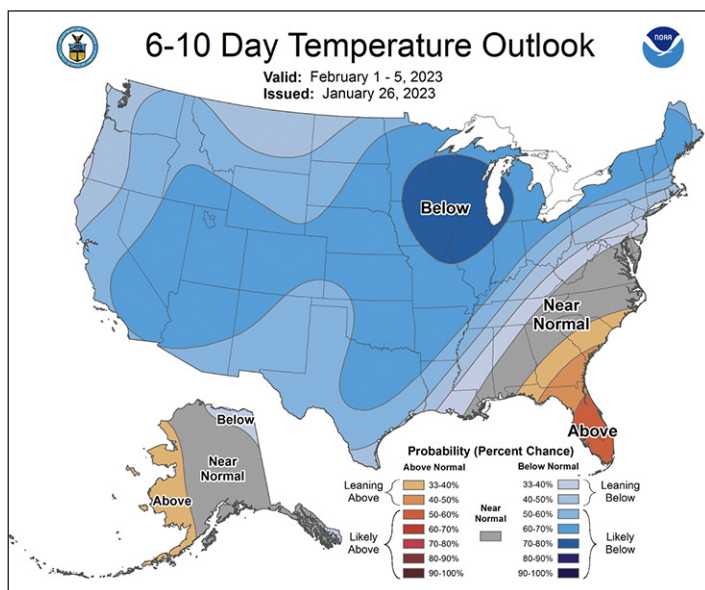
The picture for precipitation in February is simpler: above average rates of precipitation are

University of TN releases updated small-scale tomato, large-scale pepper budgets

The University of Tennessee has updated two extension publications and sample budget spreadsheets, "Sample Budget for Small-Scale Commercial Tomato Operations," and "Sample Budget for Large-Scale Bell Pepper Operations and the Impact of Phytophthora Blight on Farm Revenue and Costs."

A guide to help growers use the Excel spreadsheet for the tomato budget is available at <https://>

[Truffles & Other Edible Mycorrhizal Mushrooms \(CCD-CP-83\)](#), and [Willows for Cuttings \(CCD-CP-75\)](#). Check for these and many other resources at www.uky.edu/ccd.



forecast at every interval almost throughout the commonwealth for the entire month.

extension.tennessee.edu/publications/Documents/W1125.pdf. A guide to help growers use the spreadsheet for the pepper budget can be accessed at <https://extension.tennessee.edu/publications/Documents/W831.pdf>.

The Excel spreadsheets accompanying both publications are available for download at <https://arec.tennessee.edu/extension/budgets/> under the Fruit and Vegetable Budgets heading.

Census of Ag deadline is Feb. 6th

From the National Agricultural Statistics Service (NASS) and the Kentucky Farm Service Agency (FSA) newsletter

The February 6th deadline to complete the 2022 Census of Agriculture is coming up quickly. By completing the survey, producers can help generate opportunities that better serve current and future generations of farmers. Specialty crop growers should note that the Census is the only measure of produce production in Kentucky by NASS. The questionnaire can be completed online, or via the paper form sent to a farmer's home.

The Census is a complete count of U.S. farms and ranches and the people who operate them. Even small plots of land - whether rural or urban - growing fruit, vegetables, or some food animals count if \$1,000 or more of such products were raised and sold, or normally would have been sold, during the Census year. Taken only once every five years, the Census looks at land use and ownership, operator characteristics, production practices, income, and expenditures. Learn more at <https://www.nass.usda.gov/AgCensus/>.



2022 CENSUS OF AGRICULTURE

RESPOND NOW
nass.usda.gov/AgCensus

YOUR VOICE. YOUR FUTURE. YOUR OPPORTUNITY.

USDA NATIONAL AGRICULTURAL STATISTICS SERVICE United States Department of Agriculture National Agricultural Statistics Service #AgCensus

SARE offers new *Transitioning to Organic Production* bulletin

By Sean McGovern, Sustainable Agriculture Research and Education (SARE)

Sustainable Agriculture Research and Education's newest bulletin, *Transitioning to Organic Production*, explains how many farmers adopt organic production to increase profits while improving the resilience and environmental impact of their production systems. Long-term success requires patience, flexibility, good record-keeping, and a commitment to stewardship.

Transitioning to Organic Production lays out basic transition strategies for livestock, field crop and horticultural systems, including a summary of the



certification process and the National Organic Program standards. Practices common to all organic systems are also addressed, including:

- crop rotation
- cover cropping
- addition of organic fertility sources
- disease prevention
- integrated pest and weed management
- conservation tillage

Transitioning to Organic Production also outlines how these research-based practices, paired with sound transition strategies such as flexible timelines, using alternative labels, and coordinating with NRCS programs, can help farmers successfully navigate the transition process. Download or order your free print copy of *Transitioning to Organic Production* at <https://www.sare.org/transition-to-organic> or by calling (301) 779-1007. *Transitioning to Organic Production* is available in quantity for free to educators for use in educational workshops, classes, or tours.

Kentucky Local Food Systems Summit coming up March 29th

From *The Food Connection@UK website*

The Food Connection at the University of Kentucky, in partnership with the Kentucky Center for Agriculture and Rural Development and the Kentucky Department of Agriculture, invite you to join in a full day of workshops, networking, and conversations designed to bring together local food professionals and advocates who work on the front lines of growing our local food and farm economy. The Summit will bring together local food systems practitioners from across Kentucky to share challenges, opportunities, best practices, and build capacity for our local/regional food economy.

This year's event includes three primary session tracks: Value Chain Coordination, Cultivating a Just, Equitable, + Resilient Local Food System, and Where Are We Going?

For Cooperative Extension guests, this summit qualifies for KERS credits. Stay tuned for KERS registration.



Registration is \$95 per person. Registration includes Summit attendance, parking, all day coffee, a locally sourced KY Proud lunch, and a networking reception (please bring your ID if you think you may have an alcoholic beverage at the reception). [Click here](#) to register. For more information about speakers, [click here](#).

Scholarships are available on an as needed basis. For more information, please contact Dr. Ashton Potter Wright at ashtonpotterwright@uky.edu.

An infographic titled "ALL ABOUT GAPS THIRD PARTY AUDITS" from the Kentucky Horticulture Council. It features several colored boxes with text: a green box for "Good Agricultural Practices - SHORTENED TO GAPS - Certification", a yellow box stating "GAP CERTIFICATION IS OFTEN REQUIRED TO SELL INTO RETAIL & WHOLESALE MARKETS", a red box detailing "GAP audit costs vary based on the complexity of the audit, but over the last six years, the audit costs of farms we've worked with have ranged from \$225-\$3,054", a blue box saying "ASSISTANCE IS AVAILABLE!", a red box for "TECHNICAL ASSISTANCE" mentioning Bryan Brady, and a green box for "FINANCIAL ASSISTANCE" mentioning the KHC Cost Share Program. Contact information for Bryan Brady is provided at the bottom. The infographic is decorated with images of tomatoes and blueberries.

ALL ABOUT GAPS THIRD PARTY AUDITS

Kentucky Horticulture Council

Good Agricultural Practices - SHORTENED TO GAPS - Certification is a voluntary third party audit program that verifies that the audited farm is **producing, packaging, handling, and storing** fruits and vegetables using safe practices to **minimize food safety hazards**.

GAP CERTIFICATION IS OFTEN REQUIRED TO SELL INTO RETAIL & WHOLESALE MARKETS

GAP audit costs vary based on the complexity of the audit, but over the last six years, the **audit costs** of farms we've worked with have ranged from **\$225-\$3,054**

ASSISTANCE IS AVAILABLE!

TECHNICAL ASSISTANCE
Bryan Brady with UK's Cultivate Kentucky Program is an excellent technical assistance resource for understand audit requirements, developing a farm food safety plan, and preparing for an on-farm audit. The success rate for farms working with Bryan is 100%.
Bryan's Contact Information
Bryan.Brady@uky.edu
(757)-651-6692

FINANCIAL ASSISTANCE
Any Kentucky producer completing a third party GAPs audit in 2023 may participate in the KHC Cost Share Program. Cost share will be 75% of the audit cost up to a maximum reimbursement of \$1,250 for 2023.

For more information:
www.kyhortcouncil.org
info@kyhortcouncil.org
859-490-0889

Thanks for reading!

If you know someone who would enjoy our newsletter, or you're not subscribed yet yourself, visit www.uky.edu/ccd/newsletter and click "Subscribe Now." Or call Brett Wolff at 859-218-4384, or Christy Cassady at 859-257-5635. Stay up to date with the Center on Facebook at <https://www.facebook.com/ccduky/>

Christy Cassady

Christy Cassady, Extension Specialist

