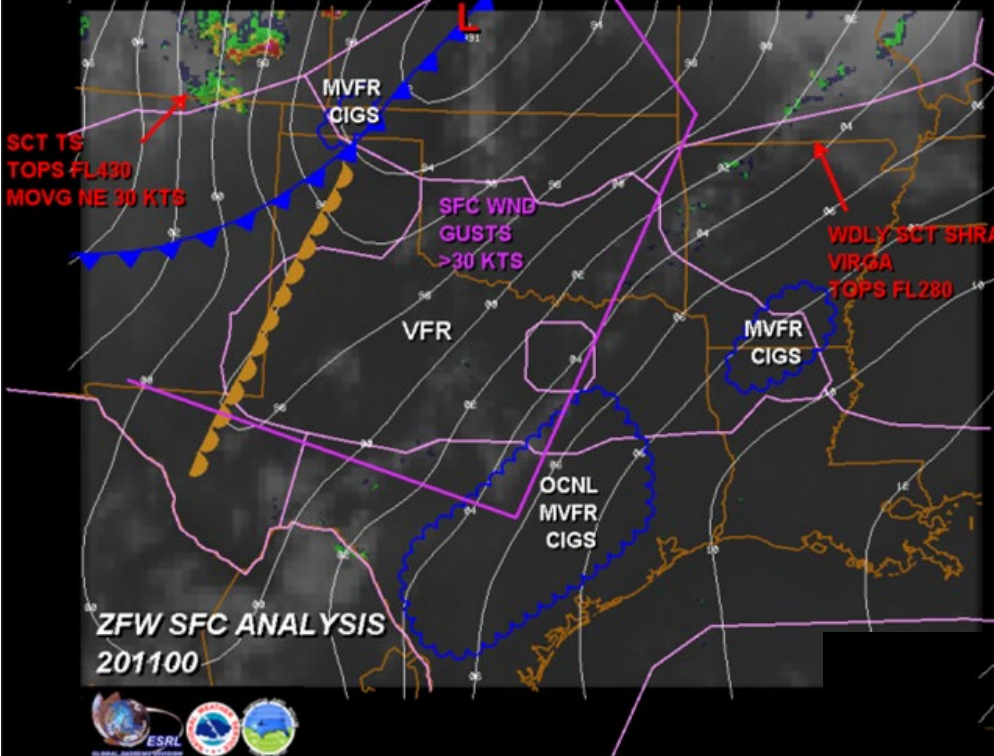
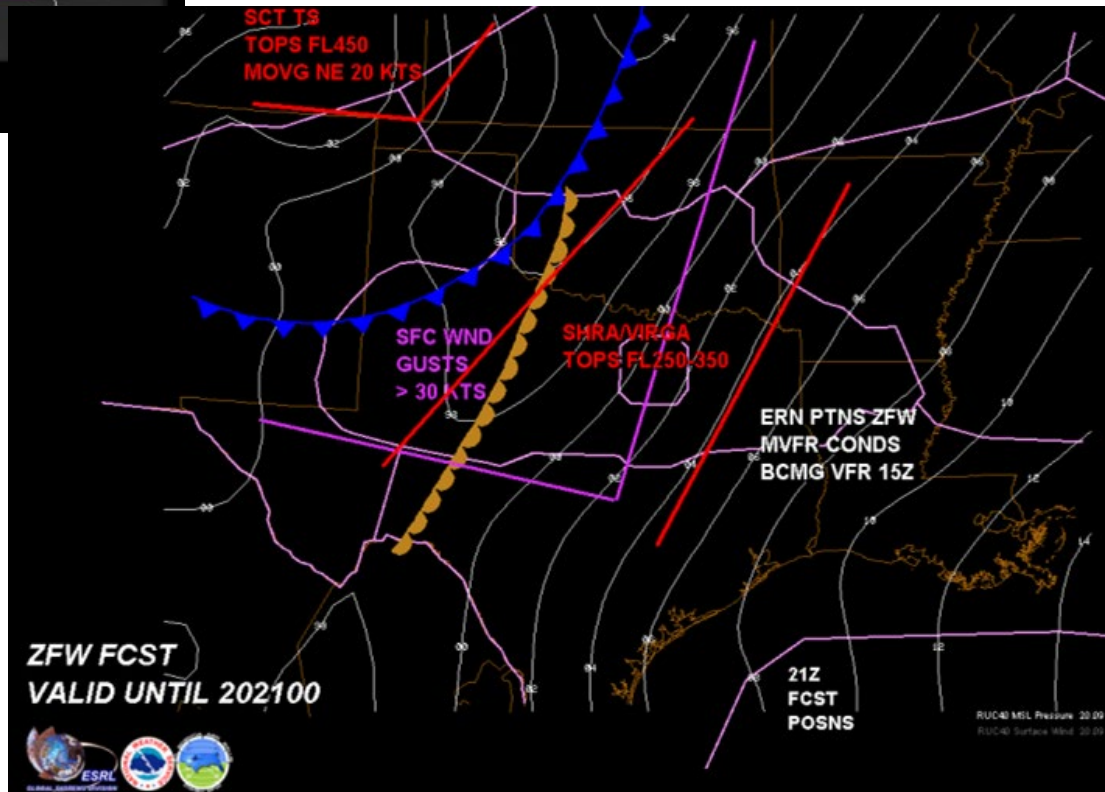


Overview of a Benign Weather Regime that Produced Weather Impacts to ZFW ARTCC *June 20, 2011*



Morning operations brief of airspace conditions indicated strong low level wind impacting diagonal runways to DFW reducing acceptance rates to 90 vs 126 rate. Mention of Virga / showers to the West of D10 TRACON between 1100 and 2100z that could produce moderate turbulence as well as departure and arrival impacts to ZFW flows.



ZCZC FTWALGDFW
TTAA00 KFTW 201101

WEATHER BRIEFING 1100Z MON JUN 20 2011

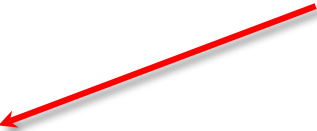
DFW TRACON FCST VALID UNTIL 20Z
18022G30KT P6SM SCT025 SCT150
FM201500 18025G35KT P6SM SCT150

OCNL MOD TURB SFC-100. CROSSWINDS ON 13L/R
20-25 KTS. OCNL MVFR CIGS THRU 14Z.


WX

NNNN

**Initial D10 forecast indicating Virga
induced turbulence and crosswind
impacts.**



**Updated D10 forecast added ceilings and
SHRA/TS West of D10 as impacts to
operations.**



ZCZC FTWALGDFW
TTAA00 KFTW 201239

WEATHER BRIEFING 1238Z MON JUN 20 2011
>>>>AMENDED<<<<<

DFW TRACON FCST VALID UNTIL 20Z
18022G30KT P6SM SCT025 SCT150
TEMPO 2012/2014 BKN025
FM201500 18025G35KT P6SM VCTS SCT150CB

OCNL MOD TURB SFC-150. CROSSWINDS ON 13L/R
20-25 KTS. OCNL MVFR CIGS THRU 14Z. SCT SHRA/
TS DVLPG W OF AREA MOVG NEWD. TOPS FL250-400.
PCPN HI BASED WITH MOD TURB EXPCD BLW. EXPECT
IMPACTS WITH W DEPS AND JEN AND UKW ARRIVALS
THRU 15Z.

WX

NNNN

Impact based graphical D10 forecast added ceiling impacts/crosswind/TS West of D10 as impacts to operations.



DFW TRACON Forecast

ATC Planning Purposes Only

1300 UTC

6/20/2011

Elements	13	14	15	16	17	18	19	20
Wind								
Cigs								
Vis								
TSRA								



Wind
Cigs/Vis
Prob



South
VFR
None



North
MVFR
Few/VC

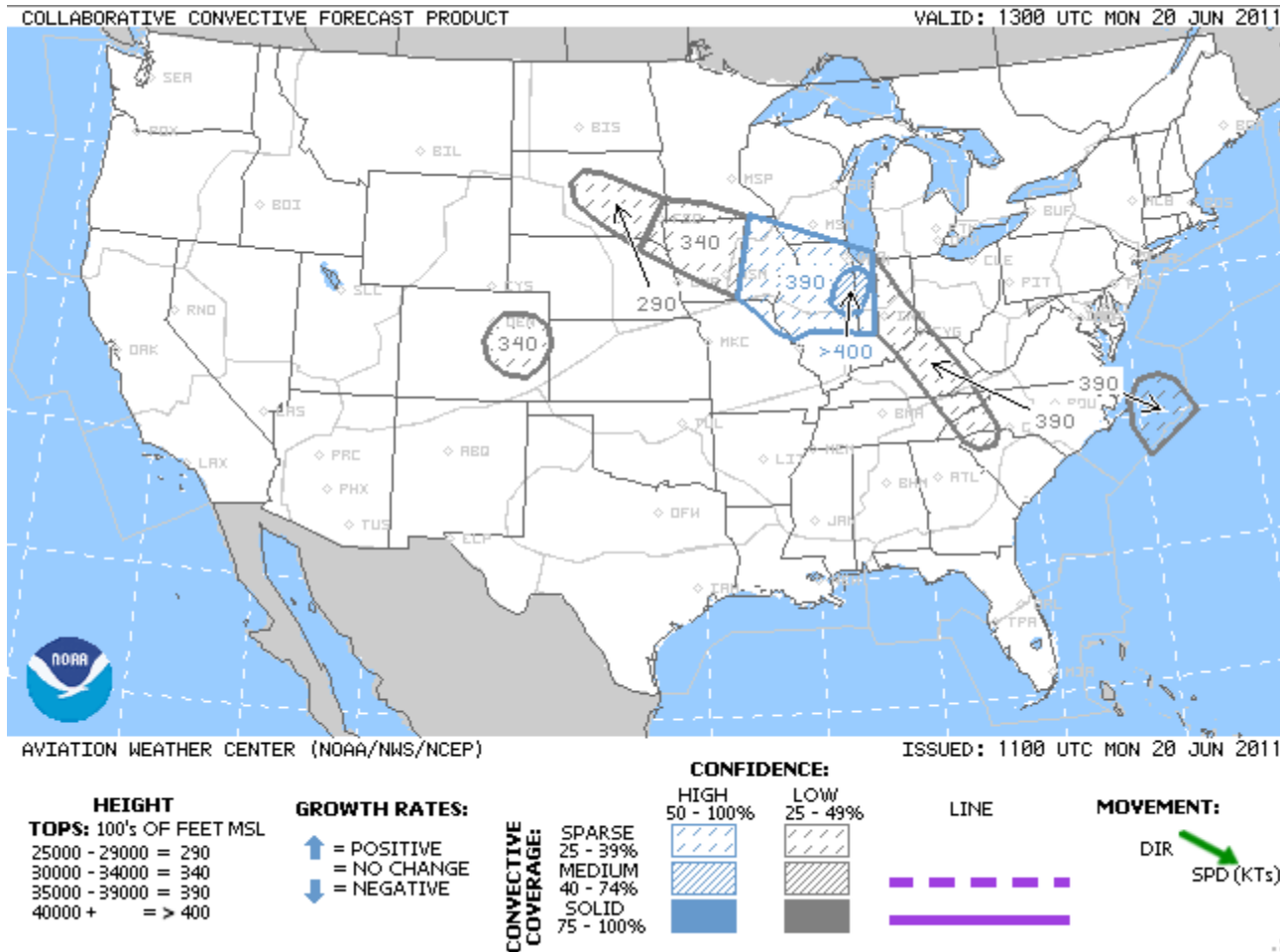


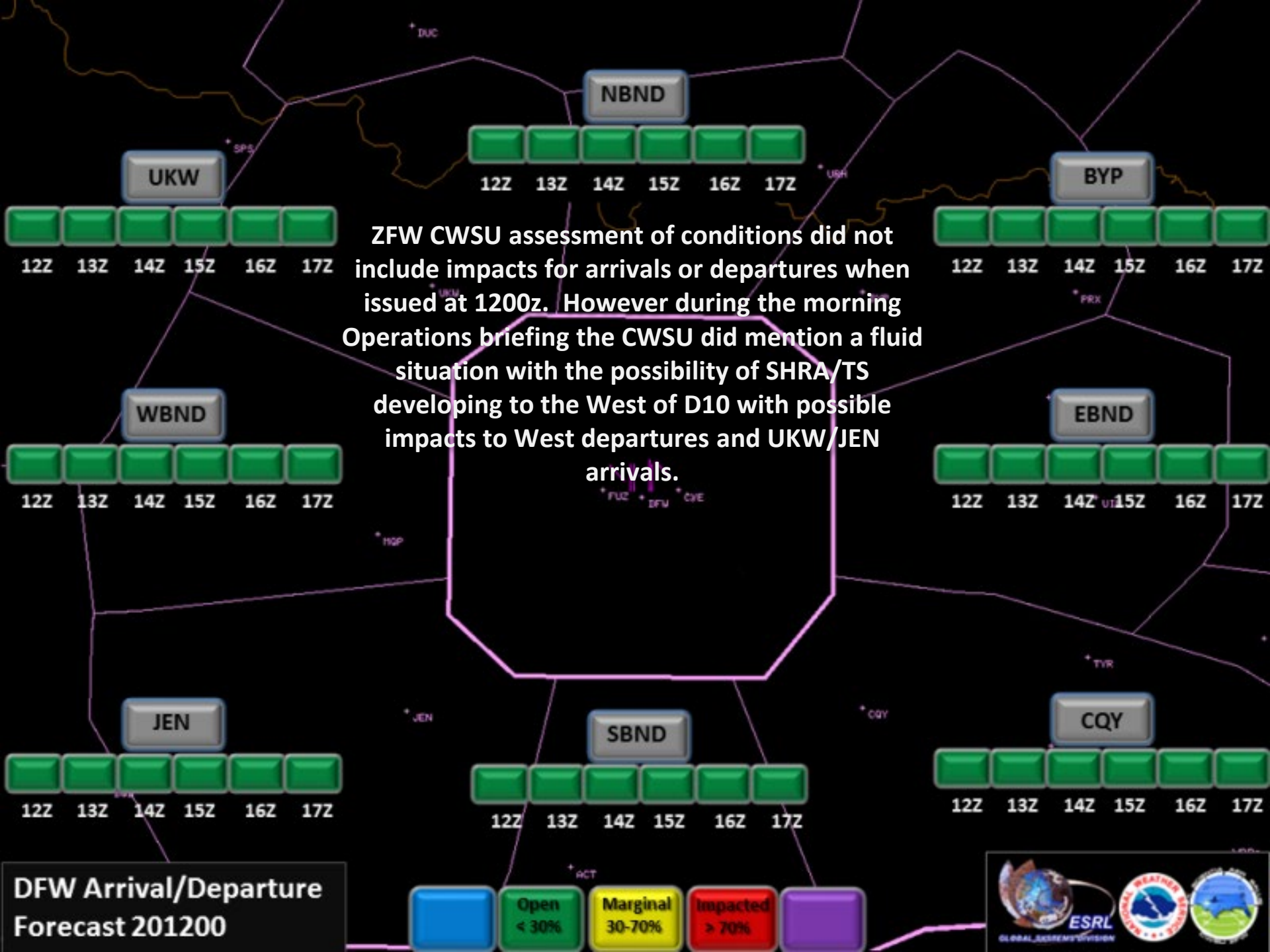
Vrbl
IFR
Prob30

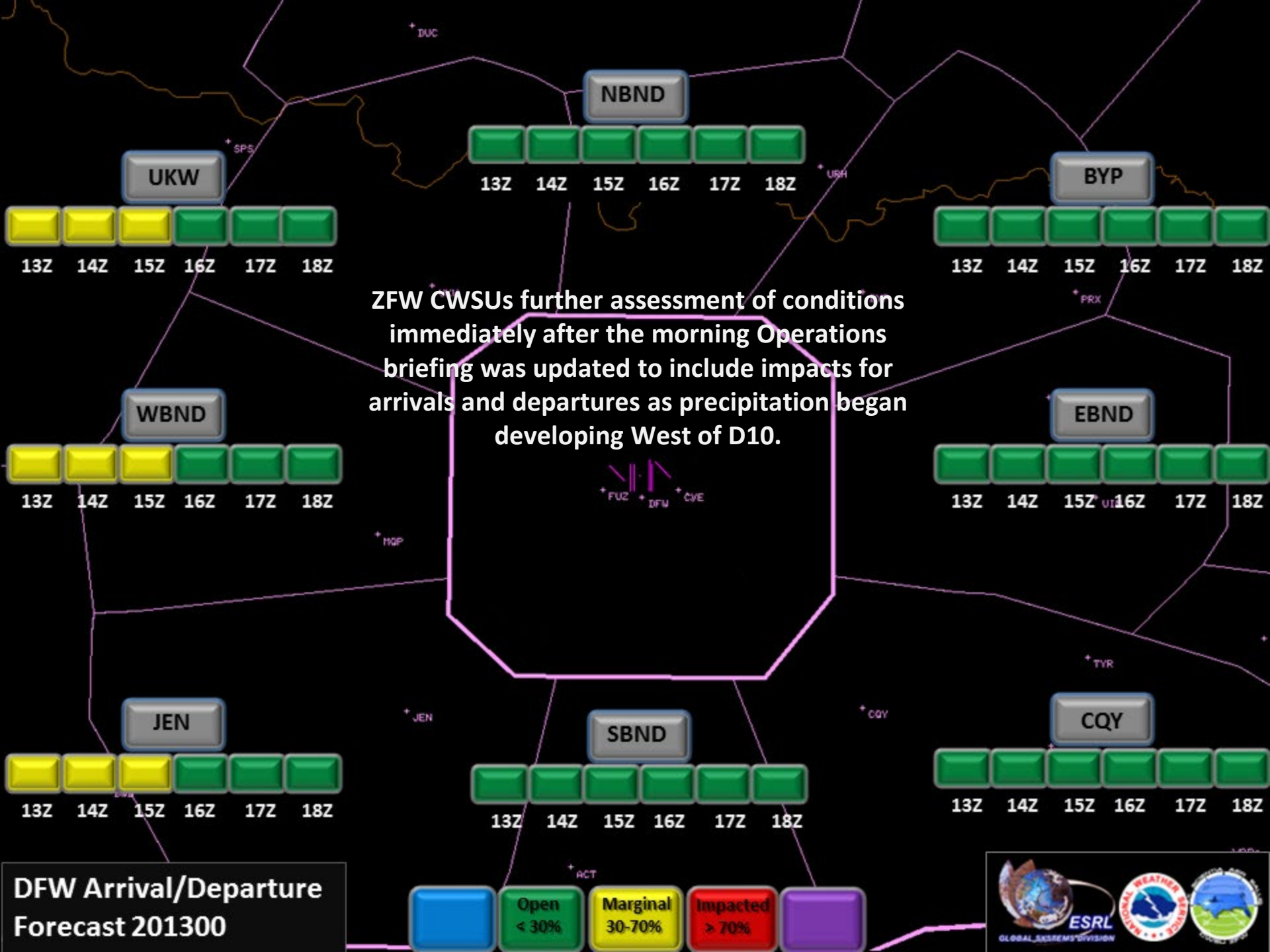


Cross Wind
LIFR
Tempo

The 1100z issuance of the CCFP did not contain any impacts to local D10 or ZFW Operations.



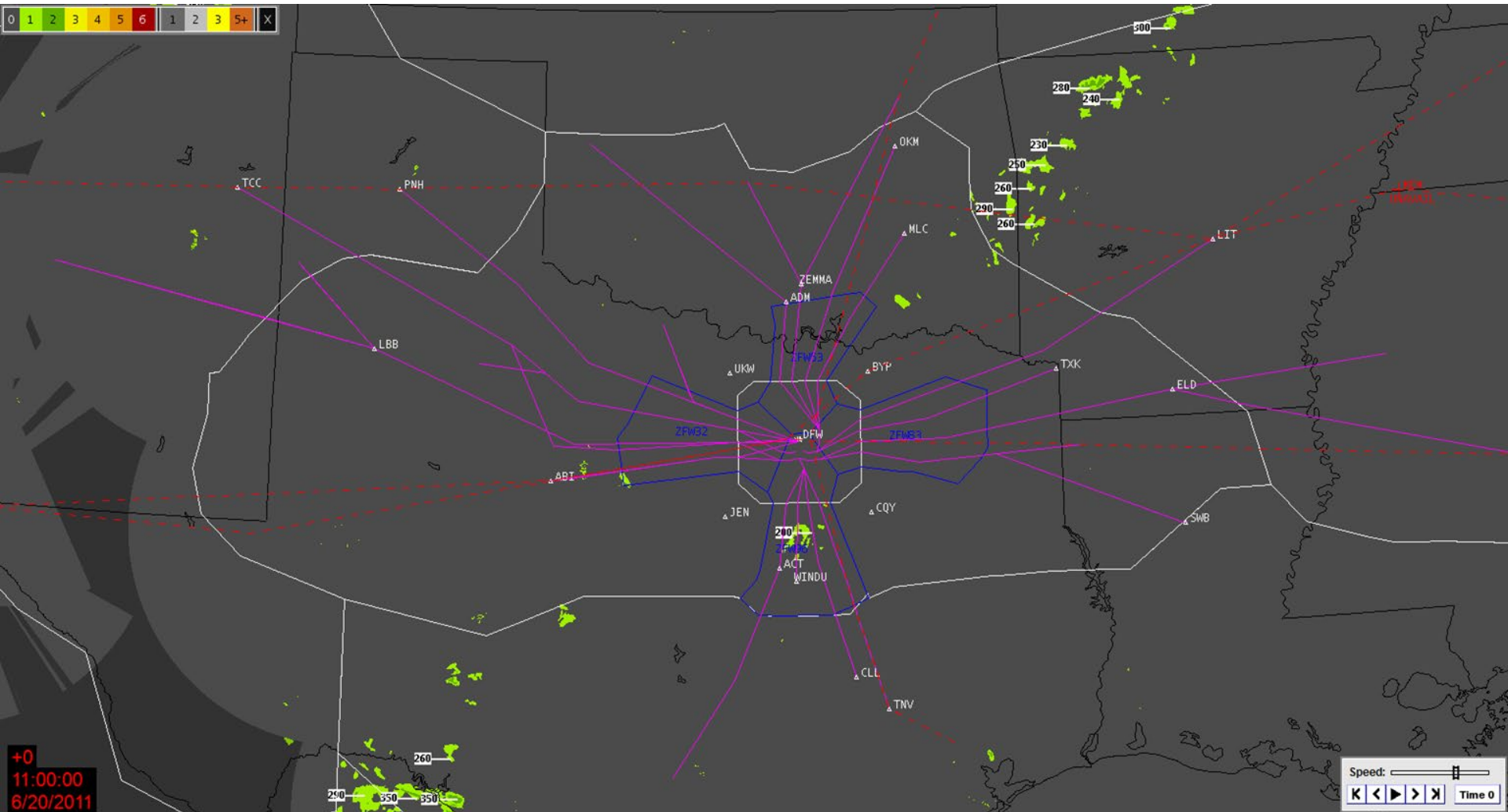




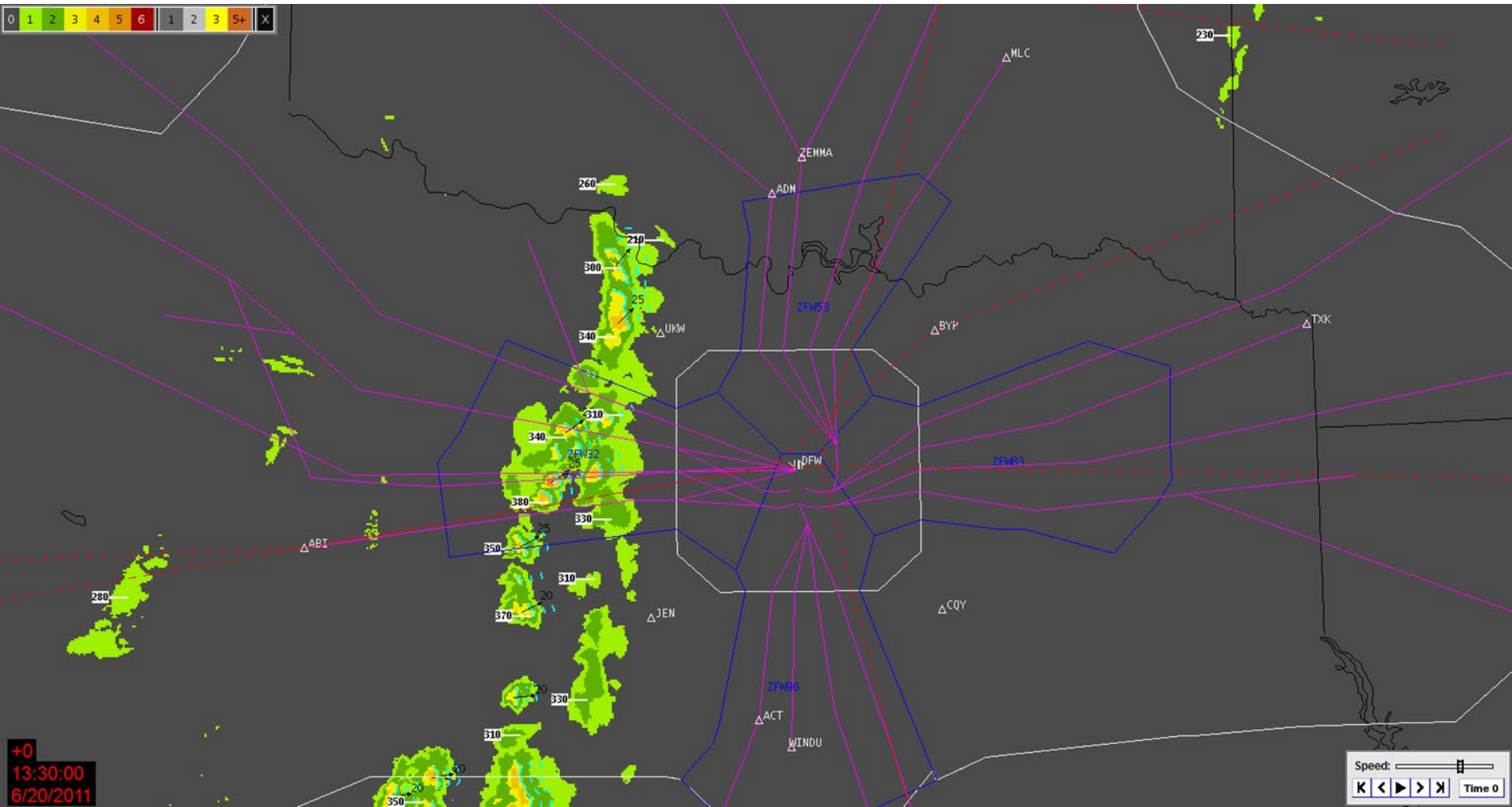
DFW Arrival/Departure Forecast 201300



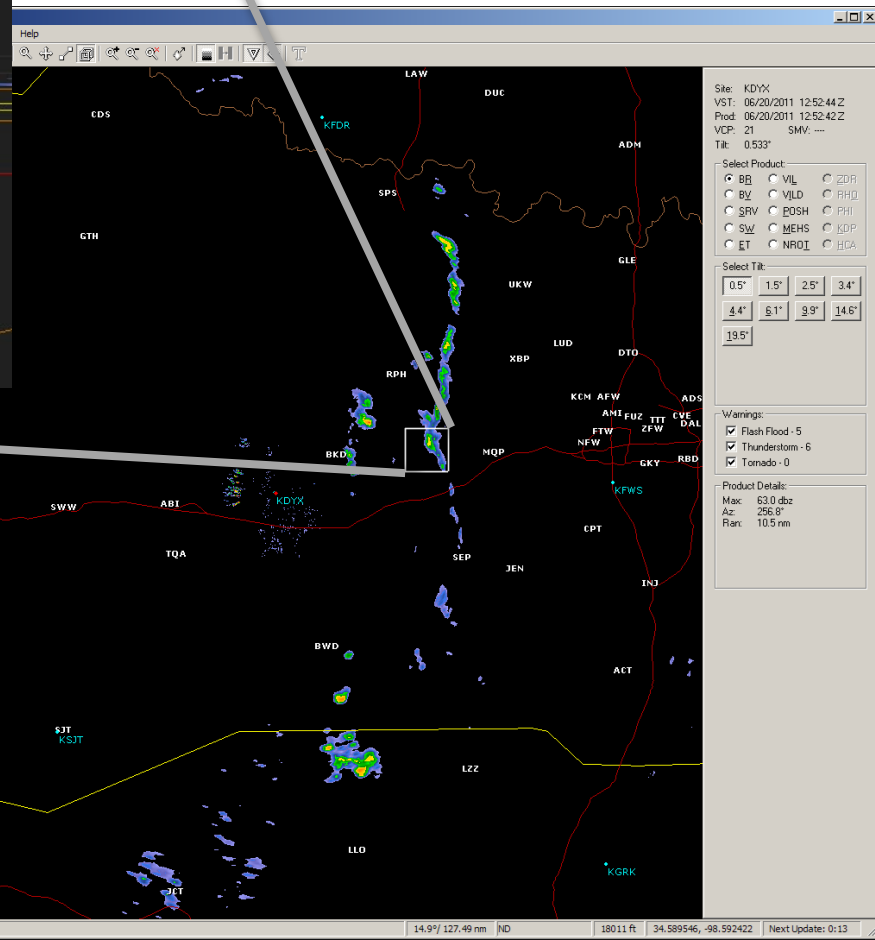
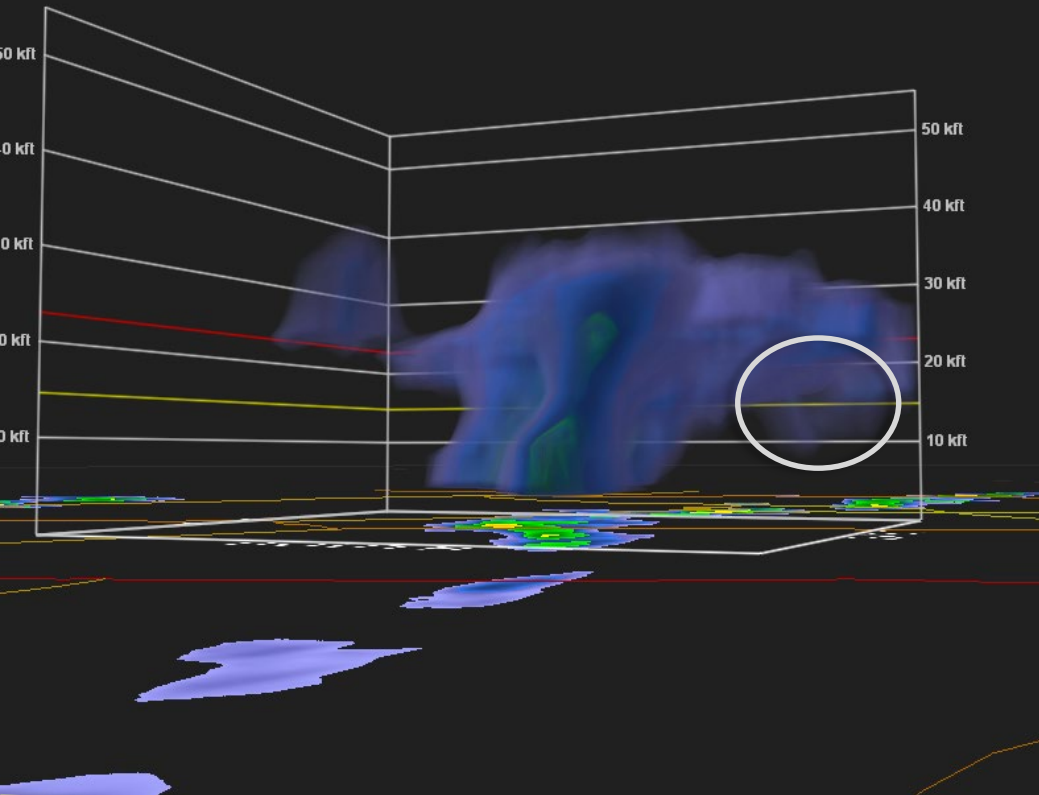
CIWS imagery at 11:00z 6/20/11 indicated only an isolated SHRA West of D10.

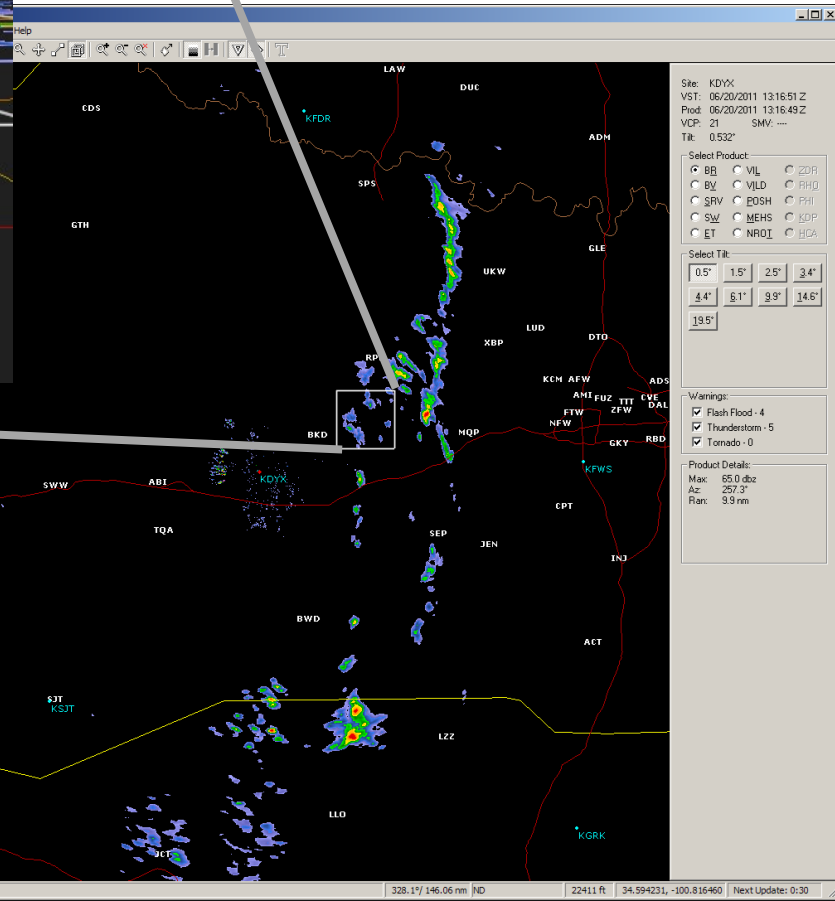
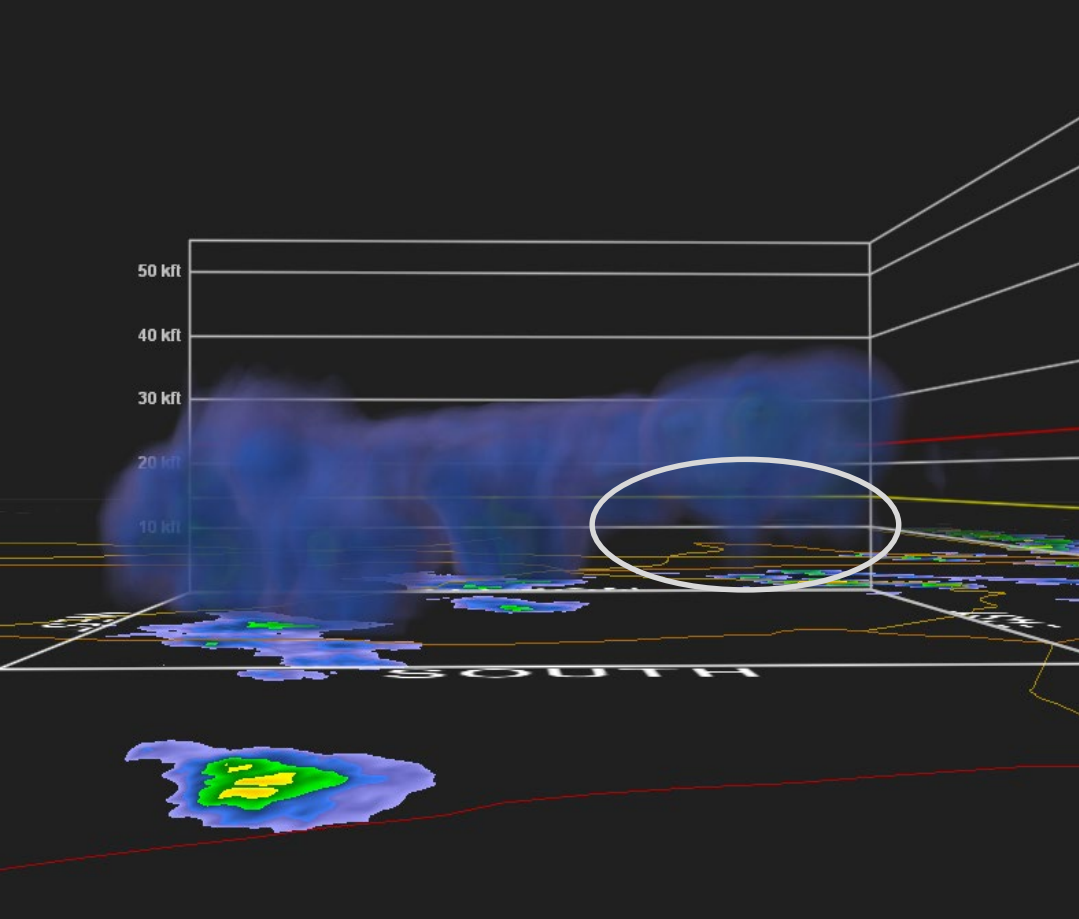


CIWS imagery at 13:30z 6/20/11 indicated fairly rapid development of elevated SHRA/TS West of D10



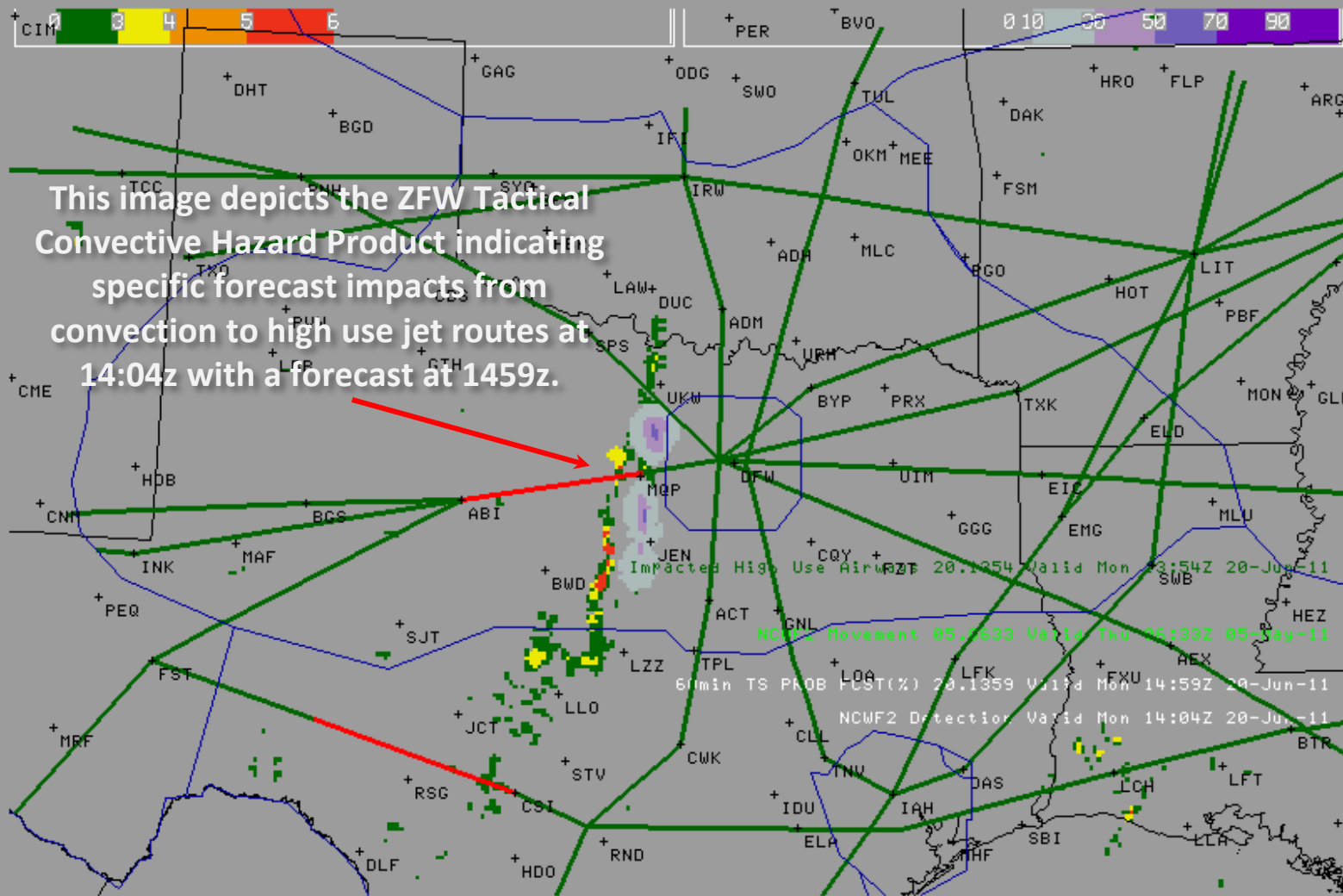
**NEXRAD GR Analyst imagery at 12:52z
6/20/11 indicated narrow broken line
of mainly elevated SHRA/TS West of
D10. Virga bases were around 090-150
as noted in circled area of 3D rendering
with most convective elements at or
below 40 dBZ.**





NEXRAD GR Analyst imagery at 13:16z 6/20/11 indicated narrow broken line of mainly elevated SHRA/TS West of D10. Virga bases were around 090-120 as noted in circled area of 3D rendering with most convective elements at or below 40 dBZ.

Tactical Convective Hazards Product Viewer



- ZFW ARTCC**
Click on box to display
- Overlays:**
- States
 - ARTCC Areas
 - High Use Airways
 - VORs
 - DFW TRACON
 - IAH TRACON
 - SID
 - STAR
 - Low Sector
 - Hi Sector
 - Super Hi Sector
 - Aircraft Locations
- Convective Products:**
- Detection
 - 30min TS PROB FCST
 - 60min TS PROB FCST
 - 90min TS PROB FCST
 - 120min TS PROB FCST
 - Movement
 - Above 15Kft
 - Above 30Kft
 - 6h CCFP Text
 - 4h CCFP Text
 - 2h CCFP Text
 - 6h CCFP
 - 4h CCFP
 - 2h CCFP
 - C-SIGMET Text
 - 1h C-SIGMET Fcst
 - C-SIGMET Nowcast

CONUS ZFW ARTCC ZHU ARTCC DFW TRACON IAH TRACON

[TCHP ANIMATION](#)

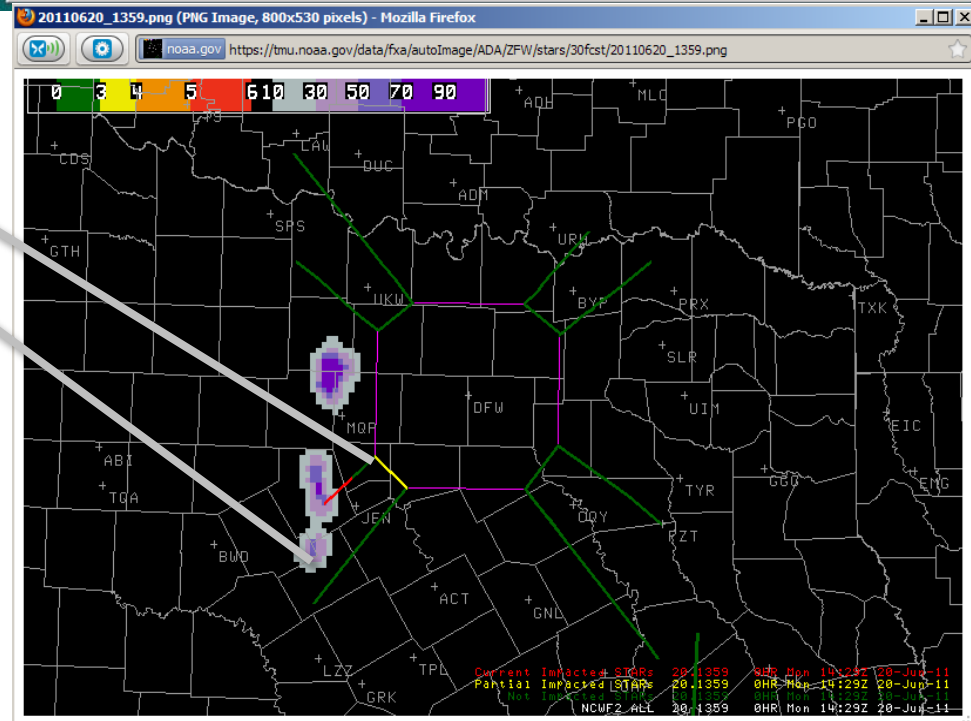
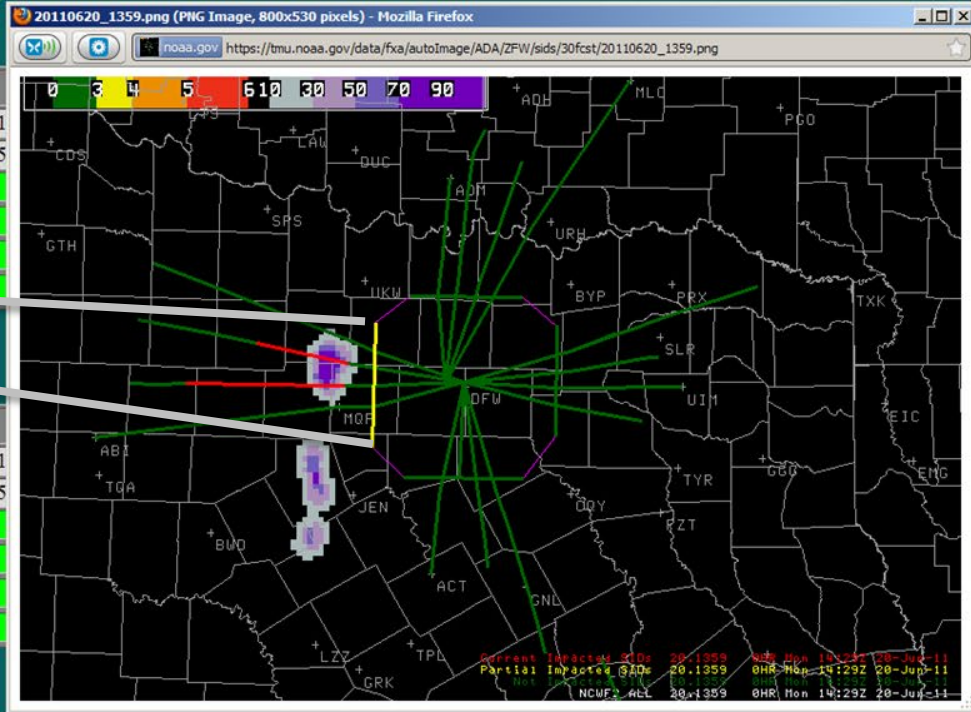
Departure Gates Last updated: Mon Jun 20 2011 14:14:24 GMT+0000

		Departure Gates: Time (UTC)																									
Hour	Min.	14 04	14 05	14 10	14 15	14 19	14 24	14 29	14 35	14 40	14 45	14 49	14 54	14 59	15 05	15 10	15 15	NA	15 24	15 29	15 35	15 40	15 45	15 49	15 54	15 59	
North		Green	Green	Green	Green	Green	Green	Green	Green	Green	Green	Green	Green	Green	Green	Green	Green	Green	Grey	Green	Green	Green	Green	Green	Green	Green	Green
East		Green	Green	Green	Green	Green	Green	Green	Green	Green	Green	Green	Green	Green	Green	Green	Green	Green	Grey	Green	Green	Green	Green	Green	Green	Green	Green
South		Green	Green	Green	Green	Green	Green	Green	Green	Green	Green	Green	Green	Green	Green	Green	Green	Green	Grey	Green	Green	Green	Green	Green	Green	Green	Green
West		Yellow	Yellow	Yellow	Yellow	Yellow	Yellow	Yellow	Yellow	Yellow	Yellow	Yellow	Yellow	Yellow	Yellow	Yellow	Yellow	Yellow	Grey	Yellow	Yellow	Yellow	Yellow	Yellow	Yellow	Yellow	Yellow

Arrival Gates Last updated: Mon Jun 20 2011 14:14:24 GMT+0000

		Arrival Gates: Time (UTC)																									
Hour	Min.	14 04	14 05	14 10	14 15	14 19	14 24	14 29	14 35	14 40	14 45	14 49	14 54	14 59	15 05	15 10	15 15	NA	15 24	15 29	15 35	15 40	15 45	15 49	15 54	15 59	
BYP		Green	Green	Green	Green	Green	Green	Green	Green	Green	Green	Green	Green	Green	Green	Green	Green	Green	Grey	Green	Green	Green	Green	Green	Green	Green	Green
CQY		Green	Green	Green	Green	Green	Green	Green	Green	Green	Green	Green	Green	Green	Green	Green	Green	Green	Grey	Green	Green	Green	Green	Green	Green	Green	Green
JEN		Yellow	Yellow	Yellow	Yellow	Yellow	Yellow	Yellow	Yellow	Yellow	Yellow	Yellow	Yellow	Yellow	Yellow	Yellow	Yellow	Yellow	Grey	Yellow	Yellow	Yellow	Yellow	Yellow	Yellow	Yellow	Yellow
UKW		Yellow	Yellow	Yellow	Yellow	Yellow	Yellow	Yellow	Yellow	Yellow	Yellow	Yellow	Yellow	Yellow	Yellow	Yellow	Yellow	Yellow	Grey	Yellow	Yellow	Yellow	Yellow	Yellow	Yellow	Yellow	Yellow

High Use Airways Last updated: Mon Jun 20 2011 14:14:24 GMT+0000



This image depicts the ZFW Tactical Convective Hazard Product indicating specific forecast impacts from convection to departures and arrivals at 14:29z.

Rate	Duals	Programs
DFW 54 VFR 090		GDP: ORD MDW
DAL 52 VFR 030		

Providing
RERTE ORD-ZFW/ZHU-VIA CQY BYP ICT SLN LNK FOD DBQ JVL BULLZ1-/D1600-ADV048
ORD ICT 20MIT AS ONE 1210-1530 ZKC:ZFW
RERTE DTW-ZFW-LIT J101 STL BDF BAE POLAR3/D1600-ADVY046
RERTE NY/DC METRO/BOS/PHL/TEB- VUZ PLYBK-ADVY039
RERTE DEN-ZFW-TBE INGO QUAIL6/1500
DEN 15MIT JETS PER ROUTE 1330-1500 ZDV:ZFW,ZHU,ZAB

1315-1342 DFW/DAL DEPT LANDING ATL, BHM, HSV, TYS AOB FL330 JETS RSTN CANCELLED ZME:ZFW
IAH TORN 10MIT 1330-1415 ZHU:ZFW

CLT VUZ 30MIT 1200-1400 ZME:ZFW

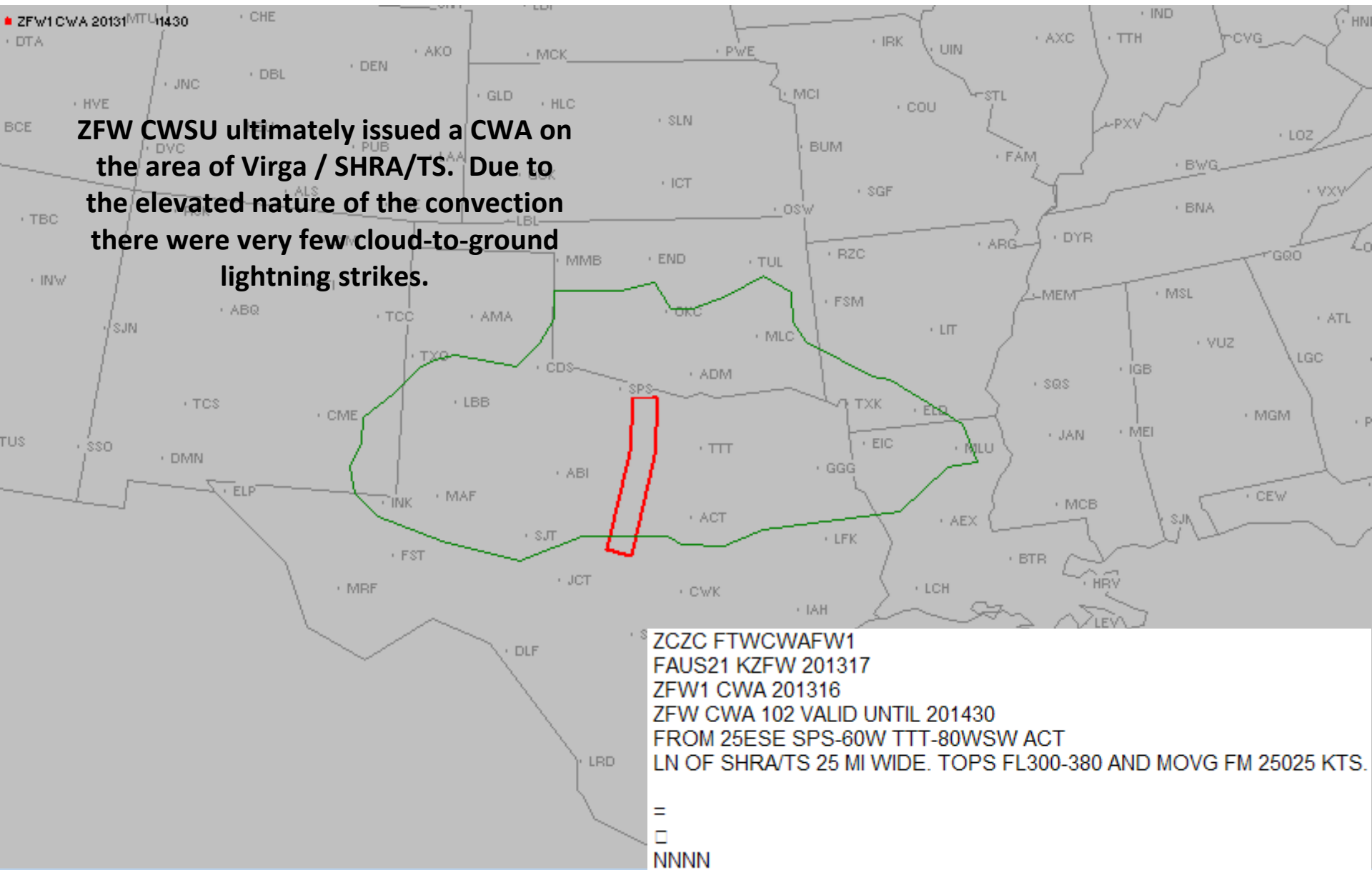
Receiving

	D10 1 W OTG 10 MIT DAL-JEN-X KNEAD@090 XCPT SWA CFR-ORD
--	---

D10 restrictions included reduced rate due to crosswinds on the diagonal runways and convection West of the TRACON as of 13:49z, both are highlighted by the red ovals.

ZFW1 CWA 201316 1430

ZFW CWSU ultimately issued a CWA on the area of Virga / SHRA/TS. Due to the elevated nature of the convection there were very few cloud-to-ground lightning strikes.



ZCZC FTWCWAFW1
FAUS21 KZFW 201317
ZFW1 CWA 201316
ZFW CWA 102 VALID UNTIL 201430
FROM 25ESE SPS-60W TTT-80WSW ACT
LN OF SHRA/TS 25 MI WIDE. TOPS FL300-380 AND MOVG FM 25025 KTS.

=
□
NNNN