

SEV HI TURB Cntrl CA

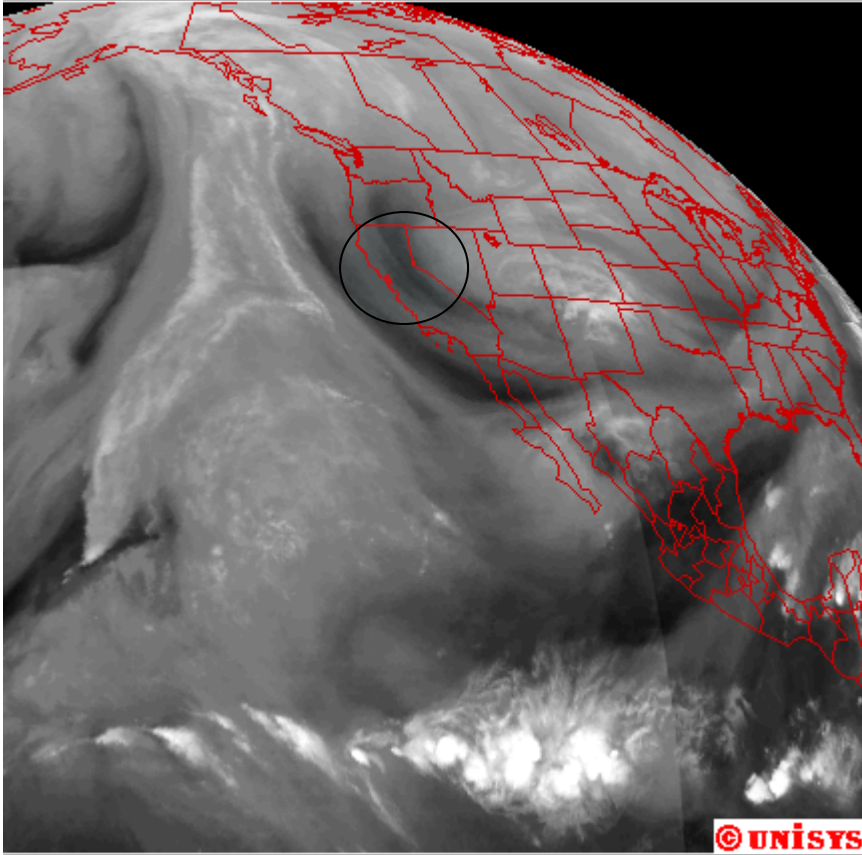
Noel Keene ZOA CWSU

23 Nov 2007

2 CWAs(1 Lo Turb, 1 Hi Turb) and
1 SIGMET

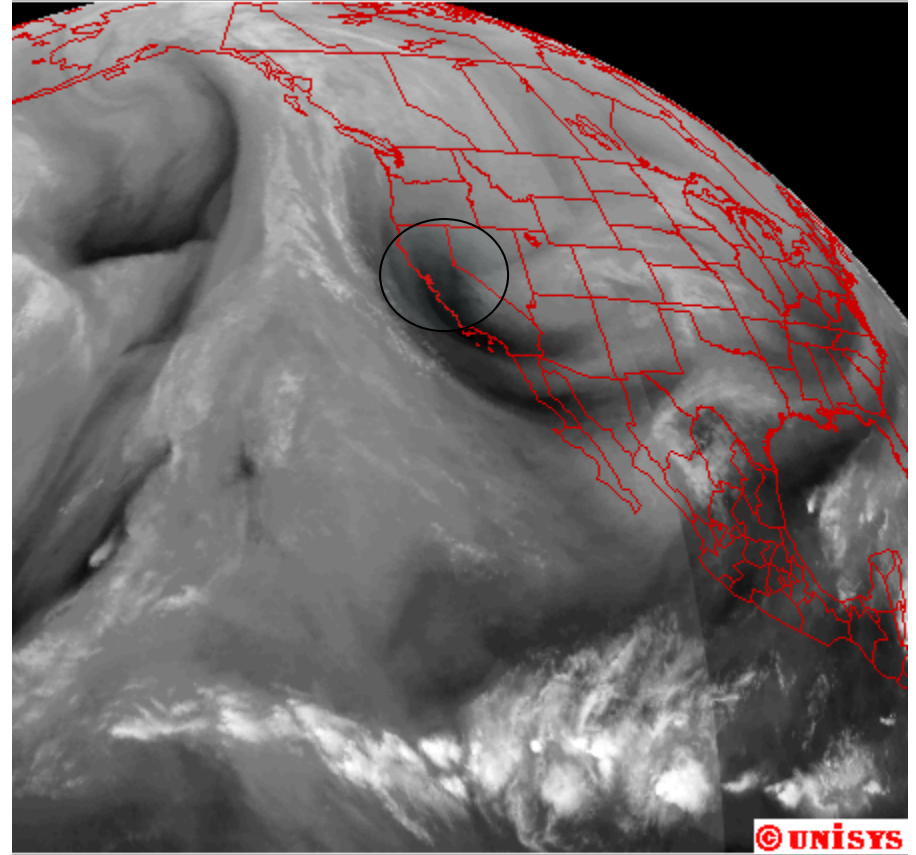
Water Vapor Darkening Over Time...Confluence/Drying

0930Z 23 NOV 07



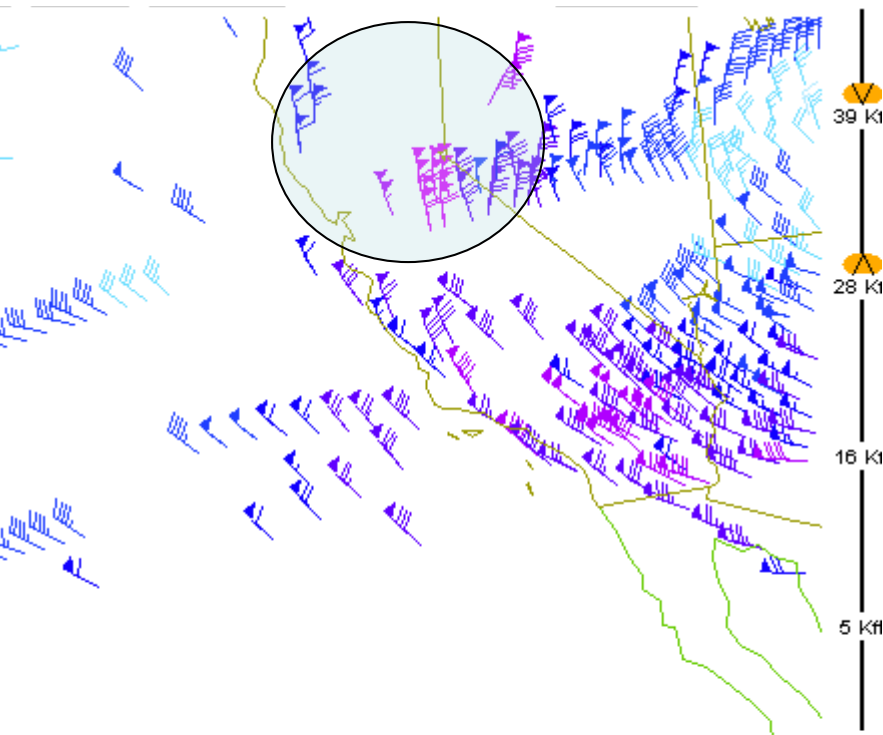
© UNISYS

1730Z 23 NOV 07

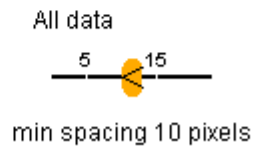
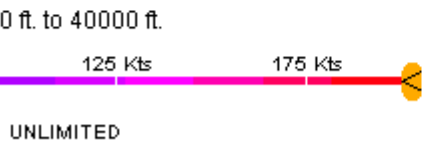


© UNISYS

Confluence near FL300

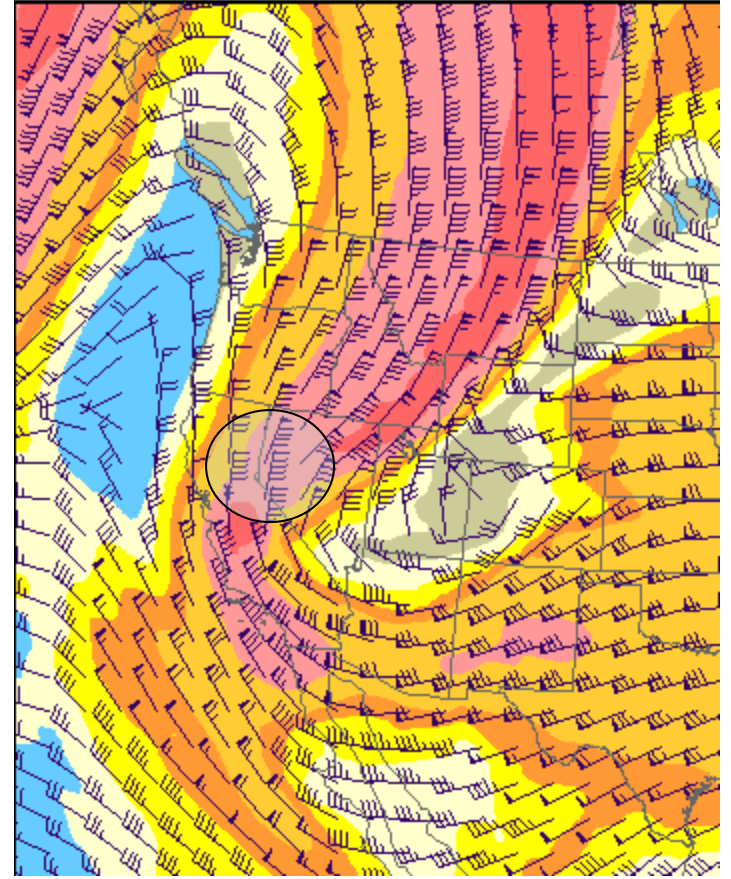


007 17:29:41 (39495 obs loaded, 538 in range, 269 shown)

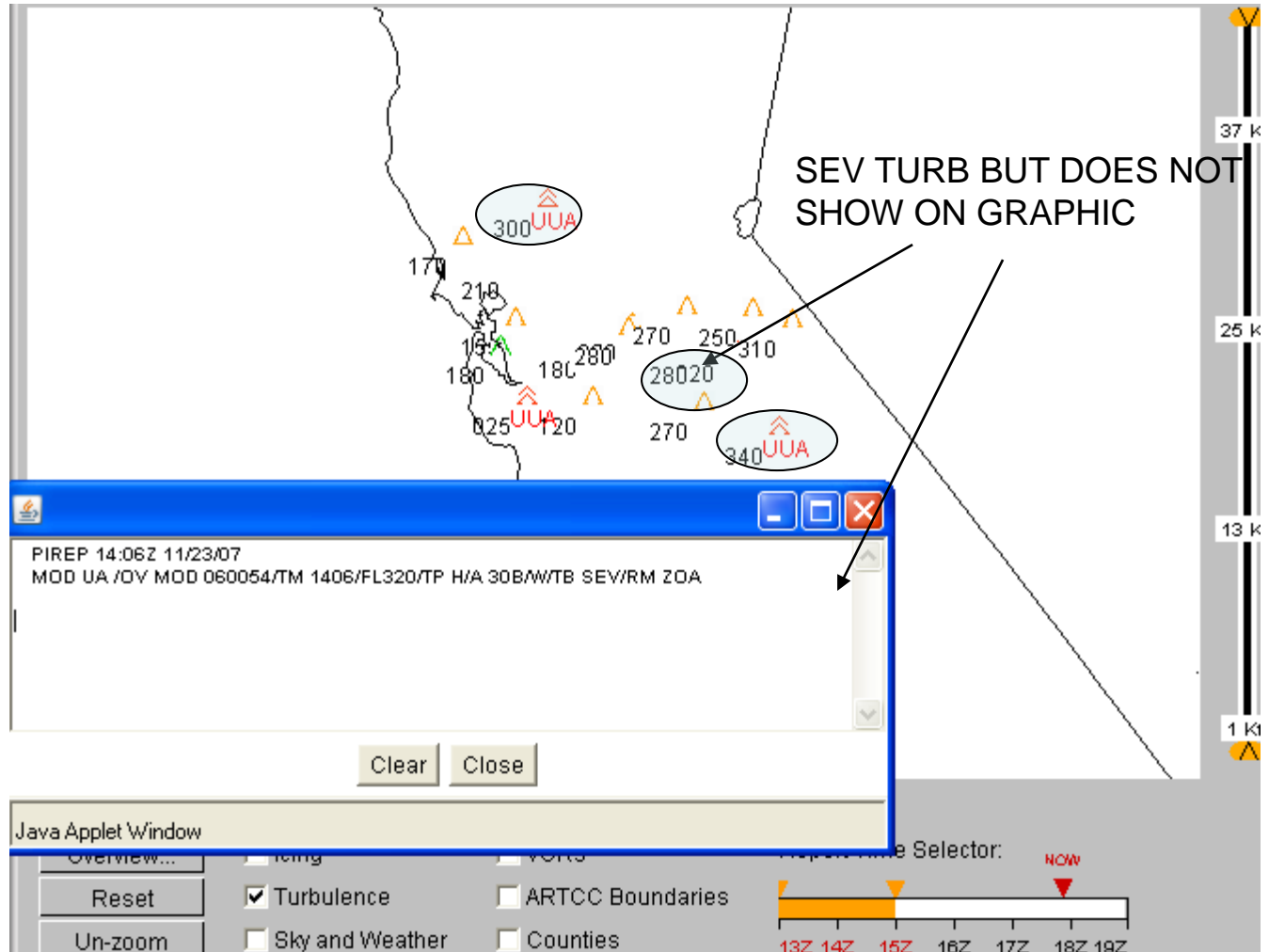


Wind speed (kts) at 30,000 ft MSL

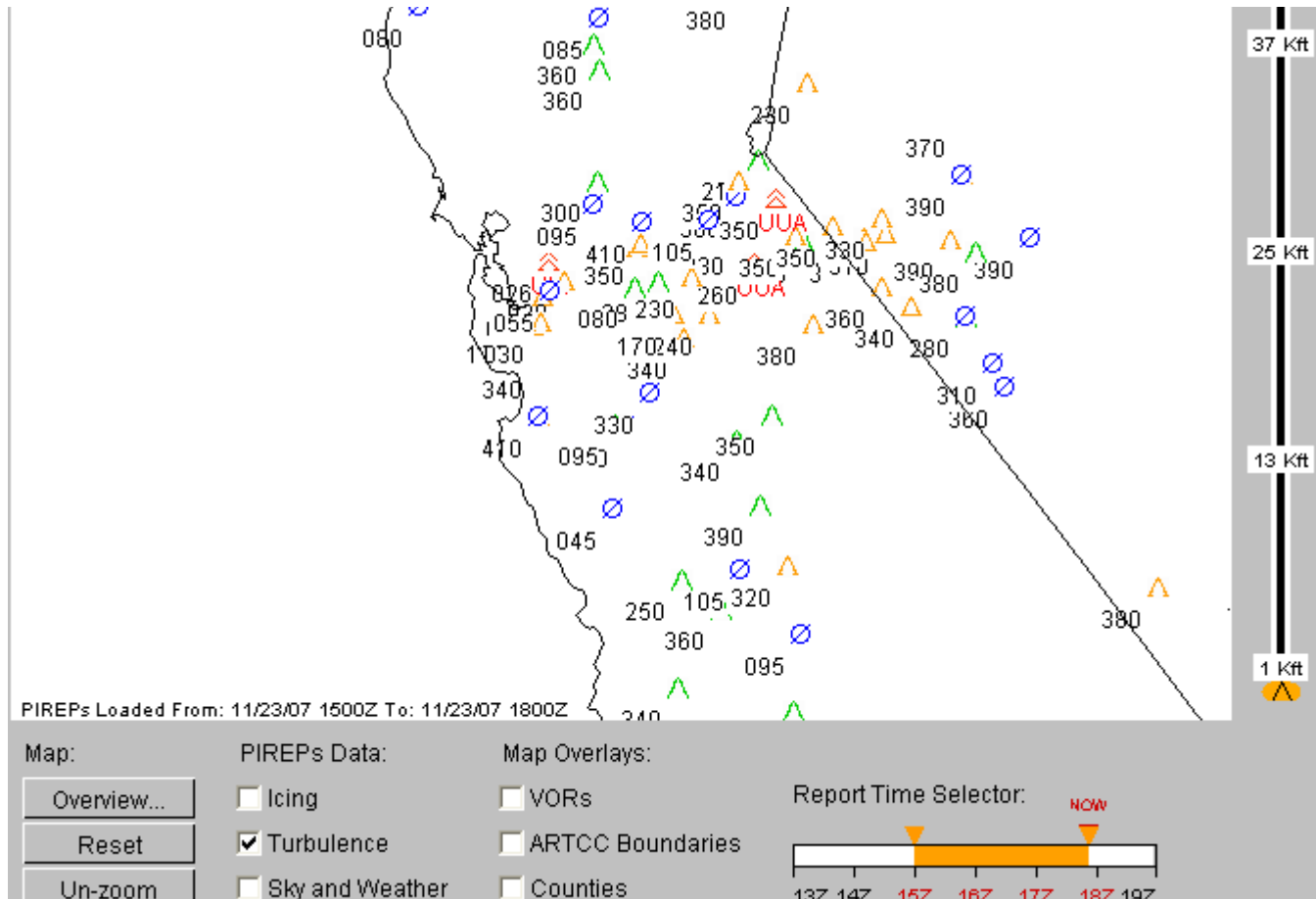
01-hour fore



3 SEV HI TURB PIREPS 13Z-15Z

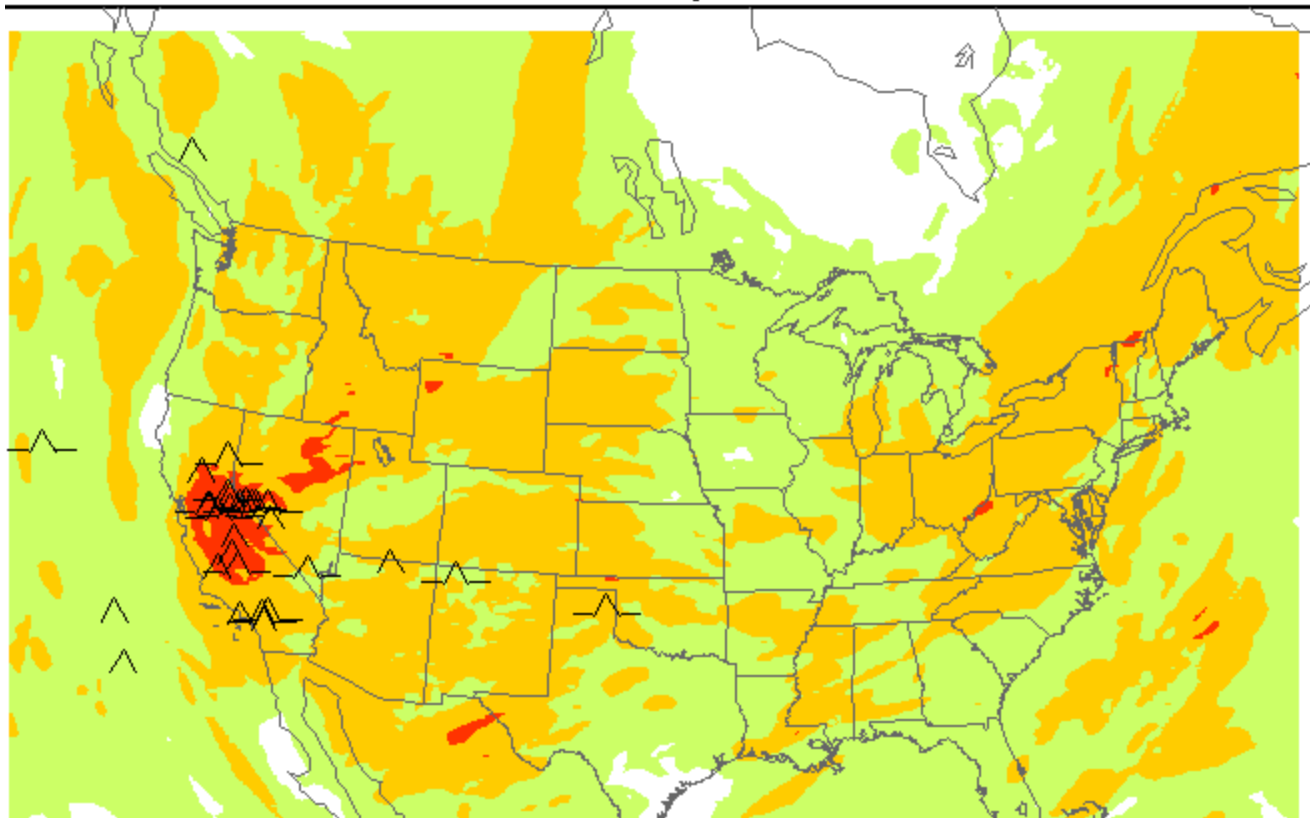


PIREPS 15Z-18Z



GTG Model Verified

Analysis valid 1700 UTC Fri 23 Nov 2007



Lessons Learned

- CWSU can prepare Air Traffic Control for Sev Turb through advance comm. with AWC, TMU
- Look for confluent area on AMDAR/models to decide on coverage for High Turbulence CWA
- If GTG model shows continuity in forecasting Sev Turb and verifies...use and extrapolate for future hours