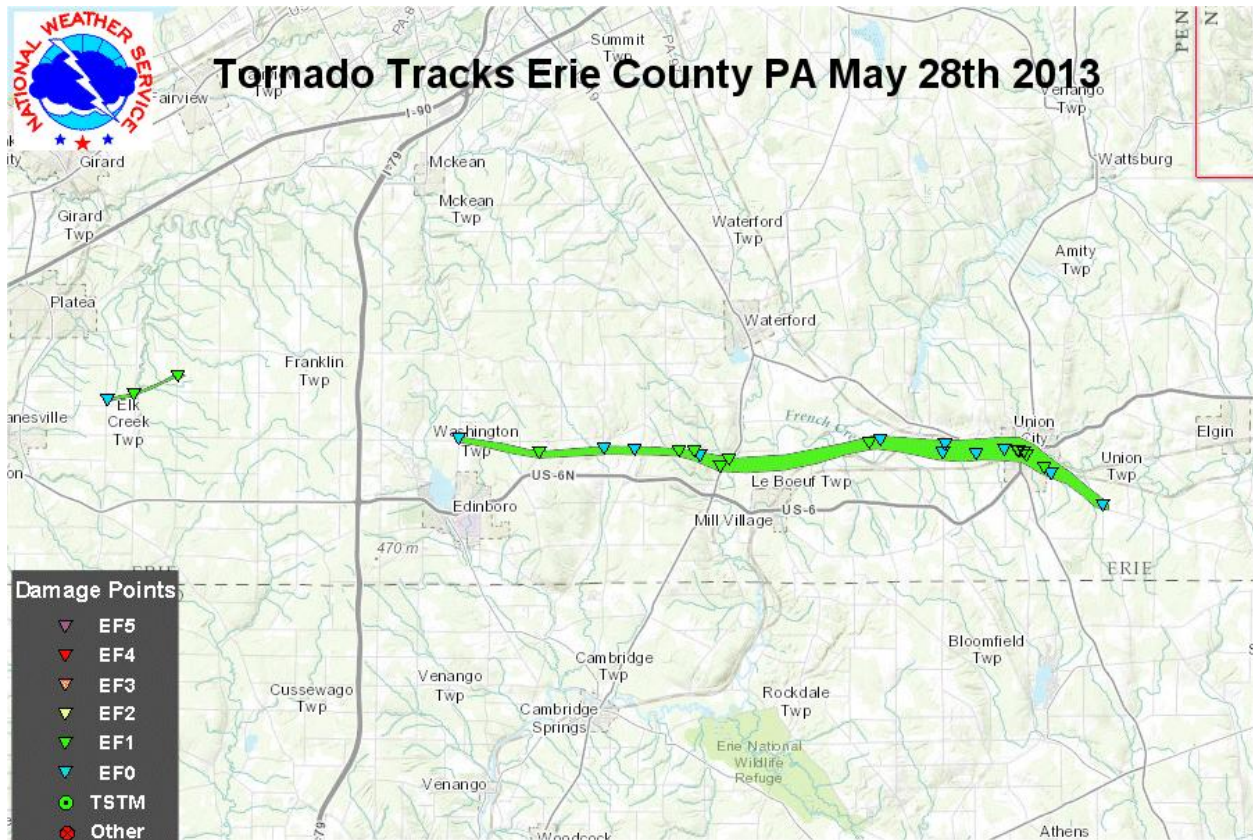


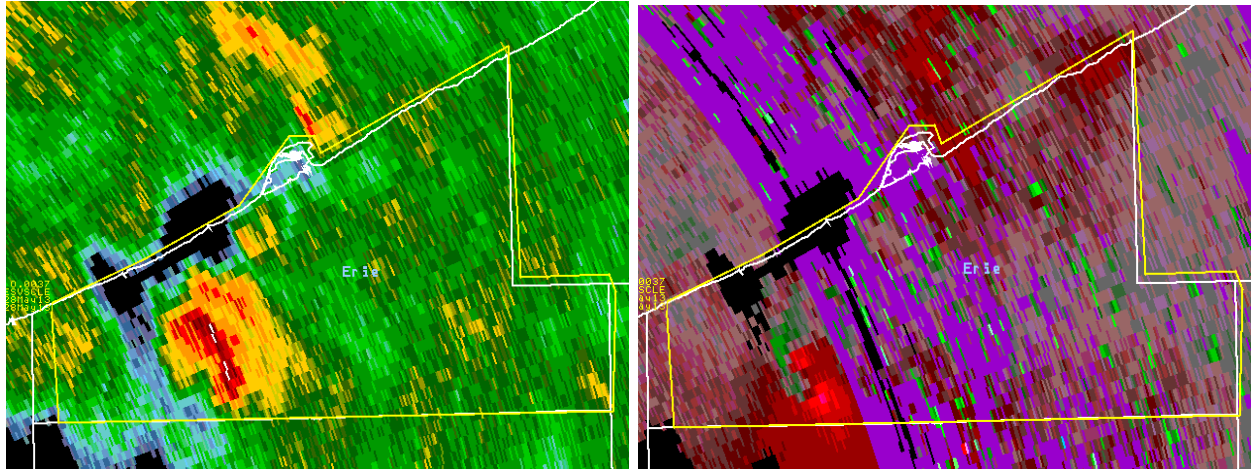
Tornadoes in Erie County, PA – May 28, 2013

National Weather Service meteorologists surveyed damage in Erie County, Pennsylvania and determined that two tornadoes occurred on the evening of May 28th. Remnants of upstream thunderstorms moved across Lake Erie and intensified as they moved onshore in northeast Ohio, continuing eastward into northwest Pennsylvania. One of the thunderstorms developed into a supercell, producing the two tornadoes.



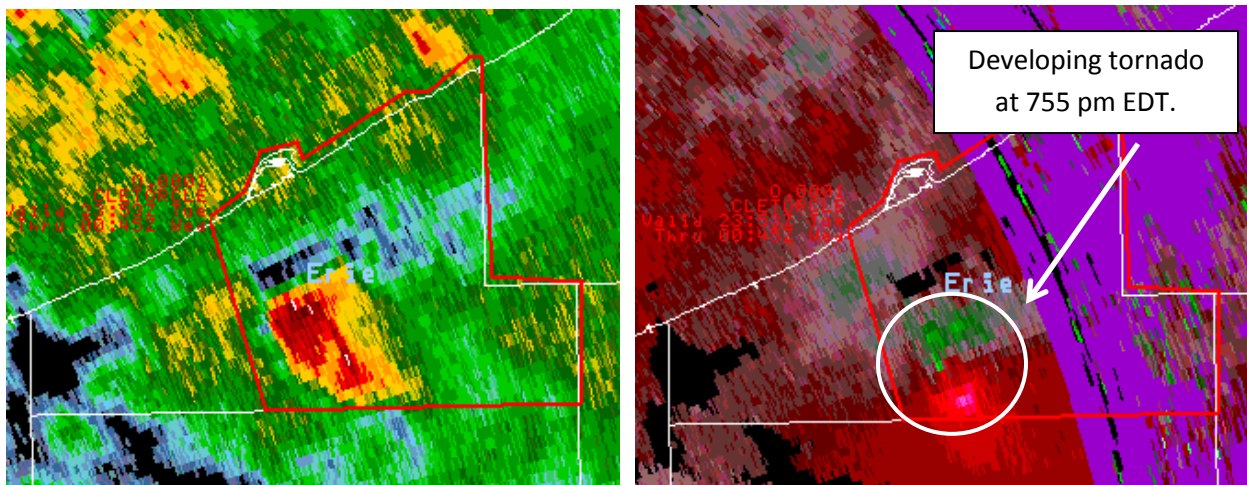
Tornado tracks across Erie County, Pennsylvania on May 28, 2013

The first tornado touched down 2 miles northeast of Cranesville and was on the ground from 7:35-7:40 pm EDT. This tornado was rated EF1 and was on the ground for 2 miles with a maximum wind speed of 90 mph and a width of 50 yards. The tornado struck a mobile home where 5 people sustained injuries. Tree damage also occurred along the track of the tornado. The images below show the reflectivity (left) and storm relative motion (right) near the time that the tornado touched down.



Reflectivity (left) and storm relative motion (right) at 735 pm on May 28, 2013

The second tornado touched down 2 miles north of Edinboro at 753 pm and was on the ground intermittently for 18 miles as it tracked east through Union City. The tornado lifted 3 miles southeast of Union City at 8:25 pm EDT. The images below show the reflectivity (left) and storm relative motion (right) near the time that the tornado touched down.



Reflectivity (left) and storm relative motion (right) at 755 pm on May 28, 2013

The tornado tracked east at a speed of approximately 25 mph reaching Union City around 815 pm EDT. Considerable tree damage occurred in Union City where multiple trees were uprooted and fell on homes. The strong winds also caused damage to roofs and siding.



Union City Tornado – picture courtesy of Jessica Metzler



Tree on truck - Union City

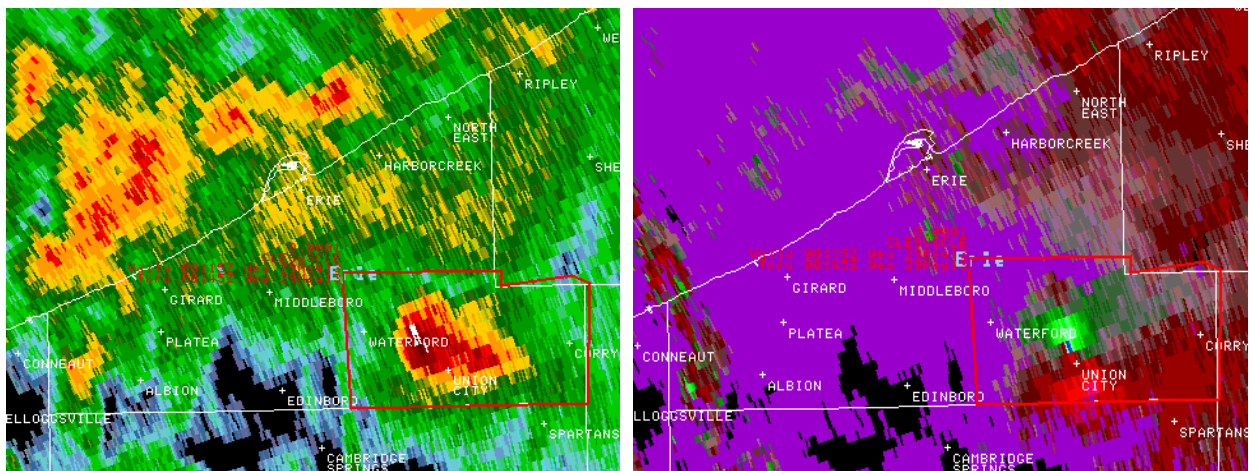


Building Damage – Union City



Tree on home – Union City

Downburst wind damage was also observed along the tornado path. Based on the damage in Union City, the survey team determined the damage was consistent with an EF1 tornado with maximum wind speeds of 100-105 mph. The maximum width of the tornado was 100-150 yards. Two minor injuries resulted from the second tornado. The following radar images show a more organized storm and stronger circulation as the tornado tracks through Union City.



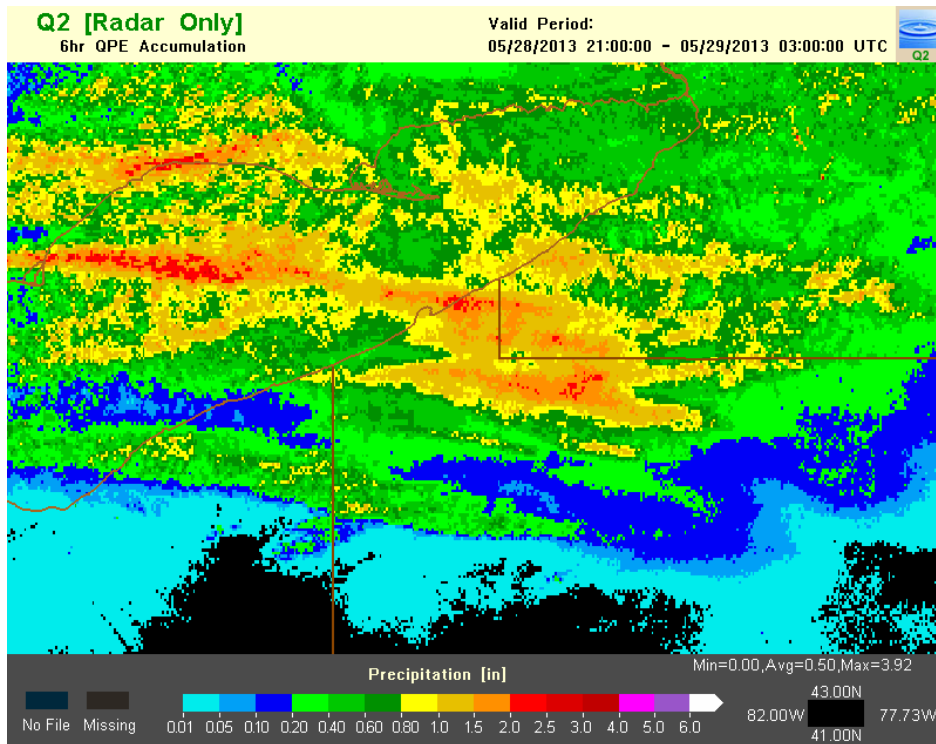
Reflectivity (left) and storm relative motion (right) at 816 pm on May 28, 2013

In addition to the tornadoes, heavy rain occurred in northwest Pennsylvania. The highest rainfall report received was 4.86 inches of rain from Amity Township while most of Erie County

received between 1-3 inches of rain. Flooding was reported in many areas with 5 roads washed out. Seven people had to be rescued from a fast moving creek. The image below shows flooding along the French Creek.



Flooding along the French Creek



Radar estimated precipitation between 5 and 11 pm EDT on May 28th, 2013

PUBLIC INFORMATION STATEMENT...CORRECTED
NATIONAL WEATHER SERVICE CLEVELAND OH
355 PM EDT WED MAY 29 2013

...2 TORNADOES CONFIRMED IN ERIE COUNTY PENNSYLVANIA ON MAY 28 2013...

LOCATION...2 MILES NORTHEAST OF CRANESVILLE
DATE...MAY 28 2013
ESTIMATED TIME...735-740 PM EDT
MAXIMUM EF-SCALE RATING...EF1
ESTIMATED MAXIMUM WIND SPEED...90 MPH
MAXIMUM PATH WIDTH...50 YARDS
PATH LENGTH...2 MILES
BEGINNING LAT/LON...41.92N / 80.30W
ENDING LAT/LON...41.93N / 80.27W

LOCATION...2 MILES NORTH OF EDINBORO TO 3 MILES SOUTHEAST OF UNION CITY
DATE...MAY 28 2013
ESTIMATED TIME...753-825 PM EDT
MAXIMUM EF-SCALE RATING...EF1
ESTIMATED MAXIMUM WIND SPEED...100-105 MPH
MAXIMUM PATH WIDTH...100-150 YARDS
PATH LENGTH...INTERMITTENT FOR 18 MILES
BEGINNING LAT/LON...41.90N / 80.13W
ENDING LAT/LON...41.90N / 79.85W

*THE INFORMATION IN THIS STATEMENT IS PRELIMINARY AND SUBJECT TO
CHANGE PENDING FINAL REVIEW OF THE EVENTS AND PUBLICATION IN NWS
STORM DATA.

...SUMMARY...

A TEAM OF NATIONAL WEATHER SERVICE METEOROLOGISTS SURVEYED STORM
DAMAGE ACROSS ERIE COUNTY TODAY. IT WAS DETERMINED THAT TWO
TORNADOES TOUCHED DOWN IN ERIE COUNTY BETWEEN 735 AND 825 PM EDT ON
MAY 28 2013. BOTH TORNADOES DEVELOPED FROM THE SAME THUNDERSTORM BUT
A CONSIDERABLE BREAK WAS OBSERVED BETWEEN THE DAMAGE PATHS. BOTH
TORNADOES WERE RATED EF1 ON THE ENHANCED FUJITA SCALE. THE FIRST
TORNADO HAD WIND SPEEDS UP TO 90 MPH. THE SECOND TORNADO HAD WIND
SPEEDS OF 100-105 MPH.

THE FIRST TORNADO TOUCHED DOWN 2 MILES NORTHEAST OF CRANESVILLE AND
WAS ON THE GROUND FOR APPROXIMATELY 2 MILES. THE TORNADO STRUCK A
MOBILE HOME WHERE 5 PEOPLE SUSTAINED INJURIES. TREE DAMAGE ALSO
OCCURRED ALONG THE TRACK OF THE TORNADO.

THE SECOND TORNADO TOUCHED DOWN 2 MILES NORTH OF EDINBORO AND WAS ON
THE GROUND INTERMITTENTLY AS IT TRACKED TO THE EAST FOR 18 MILES.
DOWNBURST WIND DAMAGE WAS ALSO OBSERVED ALONG THE TORNADO PATH.
THE TORNADO TRACKED THROUGH UNION CITY WHERE CONSIDERABLE TREE
DAMAGE OCCURRED. TREES WERE UPROOTED AND MULTIPLE TREES FELL ON
HOMES CAUSING ADDITIONAL DAMAGE. THE STRONG WINDS FROM THE TORNADO
ALSO CAUSED DAMAGE TO ROOFS AND SIDING. 2 MINOR INJURIES OCCURRED
WITH THE SECOND TORNADO. THE TORNADO HAD A WIDTH OF 100-150 YARDS.
THE TORNADO LIFTED APPROXIMATELY 3 MILES SOUTHEAST OF UNION CITY.

\$\$