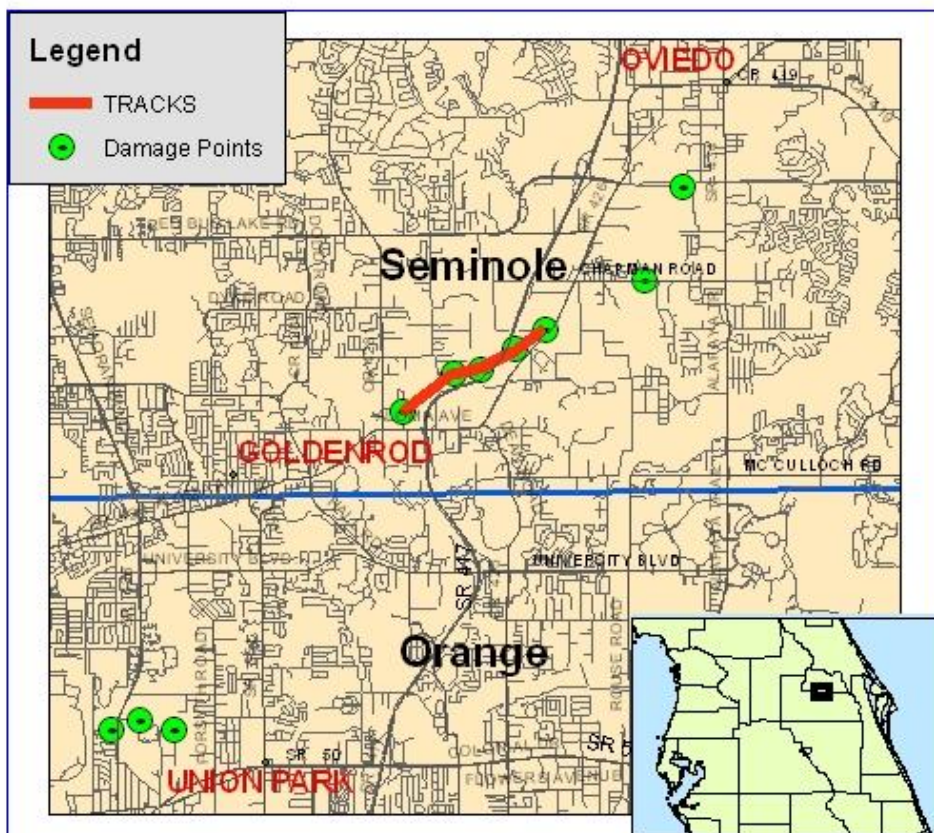


## Election Day Tornadoes November 7, 2006

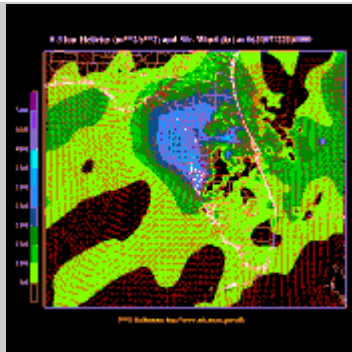
### Synopsis:

On Tuesday afternoon, a small-scale area of low pressure, referred to as a "mesolow", formed over the Gulf of Mexico along a cold front which was moving into central Florida. This center of this feature was accompanied by a small band of showers and lightning storms as it moved onshore the west coast near the mouth of Tampa Bay. After pushing onshore, these storms then moved rapidly northeast at 35 to 40 mph across Pinellas, Hillsborough and Polk counties of western Florida, before crossing the Kissimmee River into northwestern Osceola county of east central Florida. With the "mesolow" feature acting to enhance low level wind shear and helicity, a condition which favors storms to acquire rotation, significant rotation was noted on doppler radar as the storms approached the Kissimmee area shortly after 5:30 pm. Hence, a tornado warning was issued for northwest Osceola and southern Orange counties at 5:36 pm. Over the next half hour the rotation within these storms weakened significantly as they crossed into southern and eastern Orange county. However, shortly before 6:00 pm, another cluster of storms developed rapidly over northwestern Orange county near Windermere and began to show signs of significant rotation. As these storms crossed over into Seminole county, a second tornado warning was issued at 6:09 pm.

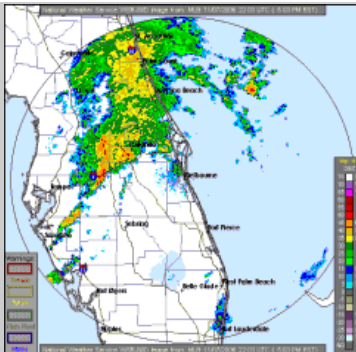


Map shows damage points as surveyed by NWS team. Track shown is the clearly delineated track, while points not in the track are associated with either weaker tornado winds or strong damaging straight-line winds generated as the tornado dissipated or lifted.

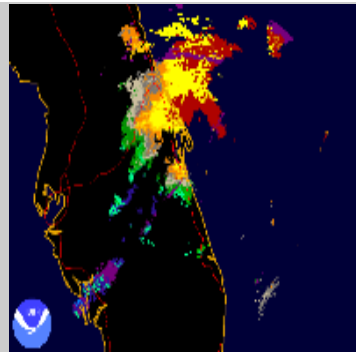
**Meteorological Imagery: (click each image to go to a loop)**



Helicity Loop



Radar Loop



Velocity Loop

**Products Issued:**

---

FLUS42 KMLB 071115  
HWOMLB

HAZARDOUS WEATHER OUTLOOK  
NATIONAL WEATHER SERVICE OFFICE MELBOURNE FL  
600 AM EST MON NOV 7 2005

AMZ550-555-570-575-FLZ041-044>047-053-054-058-059-064-141-144-147-  
072100-  
COASTAL VOLUSIA-COCOA BEACH TO JUPITER INLET 20 NM TO 60 NM  
OFFSHORE-  
COCOA BEACH TO JUPITER INLET OUT TO 20 NM-  
FLAGLER BEACH TO COCOA BEACH 20 NM TO 60 NM OFFSHORE-  
FLAGLER BEACH TO COCOA BEACH OUT TO 20 NM-INDIAN RIVER-  
INLAND VOLUSIA-MARTIN-NORTHERN BREVARD-NORTHERN LAKE-  
OKEECHOBEE-  
ORANGE-OSCEOLA-SEMINOLE-SOUTHERN BREVARD-SOUTHERN LAKE-ST.  
LUCIE-  
600 AM EST MON NOV 7 2005

THIS HAZARDOUS WEATHER OUTLOOK IS FOR EAST CENTRAL FLORIDA.

.DAY ONE...

...RIP CURRENT IMPACT...  
THERE REMAINS A MODERATE THREAT OF RIP CURRENTS AT AREA BEACHES  
TODAY DURING THE OUTGOING TIDE THROUGHOUT THE AFTERNOON AND  
EARLY  
EVENING. CHECK WITH THE LOCAL BEACH PATROL FOR ADDITIONAL  
INFORMATION...AND ALWAYS SWIM WITHIN SIGHT OF A LIFEGUARD.

...RIVER FLOOD IMPACT...

THE SAINT JOHNS RIVER NEAR LAKE HARNEY CONTINUES TO SLOWLY FALL TOWARD MINOR FLOOD STAGE OF 9.0 FEET...BUT IS STILL CRESTING A LITTLE ABOVE THE 6.0 FOOT FLOOD STAGE AT SANFORD. WATER LEVELS SHOULD DIP BELOW 9.0 FEET TONIGHT AT LAKE HARNEY...AND SLOWLY FALL BACK BELOW 6.0 FEET AT SANFORD BY MID WEEK.

.DAYS TWO THROUGH SEVEN...

HAZARDOUS WEATHER IS NOT EXPECTED AT THIS TIME.

.SPOTTER INFORMATION STATEMENT...

SPOTTER ACTIVATION WILL NOT BE NEEDED TODAY.

---

FPUS72 KMLB 072044

NOWMLB

SHORT TERM FORECAST

NATIONAL WEATHER SERVICE MELBOURNE FL

345 PM EST TUE NOV 7 2006

AMZ550-555-570-575-FLZ041-044>047-053-054-058-059-064-141-144-147-072245-

COASTAL VOLUSIA-COCOA BEACH TO JUPITER INLET 20 NM TO 60 NM OFFSHORE-

COCOA BEACH TO JUPITER INLET OUT TO 20 NM-

FLAGLER BEACH TO COCOA BEACH 20 NM TO 60 NM OFFSHORE-

FLAGLER BEACH TO COCOA BEACH OUT TO 20 NM-INDIAN RIVER-

INLAND VOLUSIA-MARTIN-NORTHERN BREVARD-NORTHERN LAKE-

OKEECHOBEE-

ORANGE-OSCEOLA-SEMINOLE-SOUTHERN BREVARD-SOUTHERN LAKE-ST.

LUCIE-

345 PM EST TUE NOV 7 2006

.NOW...

THROUGH 6 PM...A LARGE AREA OF LIGHT TO MODERATE RAIN WITH EMBEDDED

HEAVIER DOWNPOURS WILL MOVE NORTHEAST AT 25 TO 30 MPH ACROSS AREAS

NEAR AND NORTHWEST OF THE INTERSTATE FOUR CORRIDOR. THE ACTIVITY WILL

LIKELY PRODUCE WIDESPREAD RAINFALL AMOUNTS RANGING FROM ONE TENTH TO

ONE QUARTER OF AN INCH...WITH LOCALLY HIGHER AMOUNTS BETWEEN ONE HALF

AND ONE INCH IN A FEW LOCATIONS.

A FEW CLOUD TO GROUND LIGHTNING STRIKES AND WIND GUSTS TO AROUND

30

MPH MAY ALSO ACCOMPANY THE MOST INTENSE ACTIVITY.

\$\$

CRISTALDI

---

WWUS82 KMLB 072224

SPSMLB

SPECIAL WEATHER STATEMENT  
NATIONAL WEATHER SERVICE MELBOURNE FL  
522 PM EST TUE NOV 7 2006

FLZ045-053-072300-  
ORANGE-OSCEOLA-  
522 PM EST TUE NOV 7 2006

...STRONG THUNDERSTORMS MAY PRODUCE FUNNEL CLOUDS AND STRONG WINDS OVER NORTHERN OSCEOLA AND WESTERN AND SOUTHERN ORANGE COUNTIES...

AT 521 PM EST...NATIONAL WEATHER SERVICE DOPPLER RADAR INDICATED A STRONG STORM OVER INTERCESSION CITY...MOVING NORTHEAST AT 35 MPH.

LOCATIONS IN THE PATH OF THIS STRONG STORM INCLUDE KISSIMMEE...SAINT CLOUD...AND SOUTH ORLANDO.

ANOTHER STRONG STORM WAS MOVING INTO THE DISNEY AND ATTRACTIONS AREAS OF WESTERN ORANGE COUNTY.

THE PRIMARY THREATS WILL BE GUSTY WINDS OF 45 TO 55 MPH...WHICH CAN CAUSE UNSECURED OBJECTS TO BLOW AROUND...SNAP TREE LIMBS OR CAUSE POWER OUTAGES. HEAVY RAINFALL WILL TEMPORARILY REDUCE VISIBILITY. SEEK SHELTER INDOORS UNTIL THE STORM PASSES. FUNNEL CLOUDS WILL ALSO BE POSSIBLE.

\$\$

CRISTALDI

---

WFUS52 KMLB 072242 CCA  
TORMLB

FLC095-097-072300-  
/O.COR.KMLB.TO.W.0009.061107T2236Z-061107T2300Z/

BULLETIN - EAS ACTIVATION REQUESTED  
TORNADO WARNING...CORRECTED...ADD OSCEOLA COUNTY  
NATIONAL WEATHER SERVICE MELBOURNE FL  
536 PM EST TUE NOV 7 2006

THE NATIONAL WEATHER SERVICE IN MELBOURNE HAS ISSUED A

\* TORNADO WARNING FOR...  
SOUTH CENTRAL ORANGE COUNTY IN EAST CENTRAL FLORIDA  
THIS INCLUDES THE CITIES OF...ORLANDO INTERNATIONAL AIRPORT...BUENA  
VENTURA LAKES  
NORTHWESTERN OSCEOLA COUNTY IN EAST CENTRAL FLORIDA  
THIS INCLUDES THE CITIES OF...WEST LAKE TOHO...KISSIMMEE...EAST  
LAKE TOHO

\* UNTIL 600 PM EST

\* AT 535 PM EST...NATIONAL WEATHER SERVICE DOPPLER RADAR INDICATED A  
SEVERE THUNDERSTORM CAPABLE OF PRODUCING A TORNADO NEAR  
CAMPBELL...  
OR ABOUT NEAR KISSIMMEE...MOVING NORTHEAST AT 30 MPH.

\* THE TORNADO IS WILL BE NEAR...  
EAST LAKE TOHO AND BUENA VENTURA LAKES BY 545 PM EST  
ORLANDO INTERNATIONAL AIRPORT BY 555 PM EST  
7 MILES WEST OF LAKE MARY JANE BY 600 PM EST

IN ADDITION TO THE TORNADO...THIS STORM IS CAPABLE OF PRODUCING  
DESTRUCTIVE STRAIGHT LINE WINDS.

THE SAFEST PLACE TO BE DURING A TORNADO IS IN A STRONG BUILDING ON  
THE LOWEST FLOOR...IN AN INTERIOR ROOM SUCH AS A BATHROOM OR  
CLOSET.  
KEEP AWAY FROM WINDOWS. GET UNDER A WORKBENCH OR OTHER PIECE  
OF  
STURDY FURNITURE. USE BLANKETS OR PILLOWS TO COVER YOUR BODY.

EVACUATE MOBILE HOMES OR VEHICLES FOR MORE SUBSTANTIAL SHELTER.  
IF NO  
SHELTER IS AVAILABLE...LIE FLAT IN THE NEAREST DITCH OR OTHER LOW  
SPOT AND COVER YOUR HEAD WITH YOUR HANDS. ABANDON YOUR VEHICLE  
IF THE  
TORNADO IS NEARBY.

LAT...LON 2828 8154 2818 8143 2839 8105 2857 8120

---

WWUS52 KMLB 072300  
SVSMLB

SEVERE WEATHER STATEMENT  
NATIONAL WEATHER SERVICE MELBOURNE FL  
557 PM EST TUE NOV 7 2006

FLC095-097-072307-  
/O.EXP.KMLB.TO.W.0009.000000T0000Z-061107T2300Z/  
OSCEOLA FL-ORANGE FL-  
557 PM EST TUE NOV 7 2006

...THE TORNADO WARNING FOR SOUTH CENTRAL ORANGE AND  
NORTHWESTERN  
OSCEOLA COUNTIES EXPIRES AT 600 PM EST...

THE TORNADO WARNING WILL EXPIRE AT 600 PM. HOWEVER...THESE  
THUNDERSTORMS HAVE THE POTENTIAL TO PRODUCE DAMAGING WINDS AND  
ADDITIONAL TORNADOES...MAINLY ACROSS NORTHERN PORTIONS OF  
ORLANDO.

LAT...LON 2828 8154 2818 8143 2839 8105 2857 8120

---

WWUS82 KMLB 072302  
SPSMLB

SPECIAL WEATHER STATEMENT  
NATIONAL WEATHER SERVICE MELBOURNE FL  
602 PM EST TUE NOV 7 2006

FLZ045-072345-  
ORANGE-  
602 PM EST TUE NOV 7 2006

...FUNNEL CLOUDS POSSIBLE OVER CENTRAL ORANGE COUNTY...

AT 557 PM EST...NATIONAL WEATHER SERVICE DOPPLER RADAR INDICATED A  
STORM CAPABLE OF PRODUCING FUNNEL CLOUDS AND STRONG WIND GUSTS  
OVER  
50 MPH NEAR FAIRVIEW SHORES...MOVING EAST AT 30 MPH.

LOCATIONS IN THE PATH OF THE STORM WHICH MAY EXPERIENCE GUSTY  
WINDS  
AND FUNNEL CLOUDS INCLUDE UNION PARK.

FUNNEL CLOUDS CAN OCCASIONALLY TOUCH DOWN AND PRODUCE  
BRIEF...SMALL  
TORNADOES. MOVE INDOORS AND STAY AWAY FROM WINDOWS.

---

WWUS82 KMLB 072307  
SPSMLB

SPECIAL WEATHER STATEMENT  
NATIONAL WEATHER SERVICE MELBOURNE FL  
605 PM EST TUE NOV 7 2006

FLZ045-053-072345-

ORANGE-OSCEOLA-  
605 PM EST TUE NOV 7 2006

...STRONG THUNDERSTORMS AFFECTING SOUTHEASTERN ORANGE  
COUNTY...NORTH  
CENTRAL OSCEOLA COUNTY CAPABLE OF PRODUCING TORNADOES...

AT 604 PM EST...NATIONAL WEATHER SERVICE DOPPLER RADAR INDICATED A  
STRONG STORM NORTH OF NARCOOSSEE...MOVING NORTHEAST AT 30 MPH.

LOCATIONS IN THE PATH OF THIS STRONG STORM INCLUDE LAKE MARY JANE.

THE PRIMARY THREAT WILL BE CLOUD TO GROUND LIGHTNING STRIKES AND  
GUSTY WINDS OF 45 TO 55 MPH...WHICH CAN CAUSE UNSECURED OBJECTS  
TO  
BLOW AROUND...SNAP TREE LIMBS OR CAUSE POWER OUTAGES. THE STORM  
IS  
ALSO CAPABLE OF PRODUCING A BRIEF FUNNEL CLOUD OR TORNADO. HEAVY  
RAINFALL WILL TEMPORARILY REDUCE VISIBILITY. SEEK SHELTER INDOORS  
UNTIL THE STORM PASSES.

\$\$

---

WFUS52 KMLB 072308  
TORMLB  
FLC117-080000-  
/O.NEW.KMLB.TO.W.0010.061107T2309Z-061108T0000Z/

BULLETIN - EAS ACTIVATION REQUESTED  
TORNADO WARNING  
NATIONAL WEATHER SERVICE MELBOURNE FL  
609 PM EST TUE NOV 7 2006

THE NATIONAL WEATHER SERVICE IN MELBOURNE HAS ISSUED A

\* TORNADO WARNING FOR...  
SOUTHERN SEMINOLE COUNTY IN EAST CENTRAL FLORIDA  
THIS INCLUDES THE CITIES OF...WINTER SPRINGS...OVIEDO...LONGWOOD...  
LAKE JESSUP...CASSELBERRY...GOLDENROD

\* UNTIL 700 PM EST

\* AT 607 PM EST...NATIONAL WEATHER SERVICE DOPPLER RADAR INDICATED A  
SEVERE THUNDERSTORM CAPABLE OF PRODUCING A TORNADO NEAR  
GOLDENROD...MOVING EAST AT 30 MPH.

\* THE TORNADO IS WILL BE NEAR...  
OVIEDO AND LAKE JESSUP BY 615 PM EST

THE SAFEST PLACE TO BE DURING A TORNADO IS IN A STRONG BUILDING ON  
THE LOWEST FLOOR...IN AN INTERIOR ROOM SUCH AS A BATHROOM OR  
CLOSET.  
KEEP AWAY FROM WINDOWS. GET UNDER A WORKBENCH OR OTHER PIECE

OF  
STURDY FURNITURE. USE BLANKETS OR PILLOWS TO COVER YOUR BODY.

EVACUATE MOBILE HOMES OR VEHICLES FOR MORE SUBSTANTIAL SHELTER.  
IF NO  
SHELTER IS AVAILABLE...LIE FLAT IN THE NEAREST DITCH OR OTHER LOW  
SPOT AND COVER YOUR HEAD WITH YOUR HANDS. ABANDON YOUR VEHICLE  
IF THE  
TORNADO IS NEARBY.

LAT...LON 2869 8139 2858 8132 2861 8105 2875 8120

---

WWUS52 KMLB 072326  
SVSMLB

SEVERE WEATHER STATEMENT  
NATIONAL WEATHER SERVICE MELBOURNE FL  
624 PM EST TUE NOV 7 2006

FLC117-080000-  
/O.CON.KMLB.TO.W.0010.000000T0000Z-061108T0000Z/  
SEMINOLE FL-  
624 PM EST TUE NOV 7 2006

...A TORNADO WARNING REMAINS IN EFFECT UNTIL 700 PM EST FOR  
SOUTHERN  
SEMINOLE COUNTY...

AT 621 PM EST...NATIONAL WEATHER SERVICE DOPPLER RADAR CONTINUED  
TO  
INDICATE A TORNADO. THIS TORNADO WAS LOCATED NEAR OVIEDO...MOVING  
EAST-NORTHEAST AT 30 MPH. THIS IS A DANGEROUS STORM...AND HAS THE  
POTENTIAL TO MOVE INTO SOUTH VOLUSIA COUNTY AROUND LAKE HARNEY.

THE SAFEST PLACE TO BE DURING A TORNADO IS IN A BASEMENT. GET UNDER  
A  
WORKBENCH OR OTHER PIECE OF STURDY FURNITURE. IF NO BASEMENT IS  
AVAILABLE...SEEK SHELTER ON THE LOWEST FLOOR OF THE BUILDING IN AN  
INTERIOR HALLWAY OR ROOM SUCH AS A CLOSET. USE BLANKETS OR  
PILLOWS TO  
COVER YOUR BODY AND ALWAYS STAY AWAY FROM WINDOWS.

IF IN MOBILE HOMES OR VEHICLES...EVACUATE THEM AND GET INSIDE A  
SUBSTANTIAL SHELTER. IF NO SHELTER IS AVAILABLE...LIE FLAT IN THE  
NEAREST DITCH OR OTHER LOW SPOT AND COVER YOUR HEAD WITH YOUR  
HANDS.

LAT...LON 2869 8139 2858 8132 2861 8105 2875 8120

---

WFUS52 KMLB 072337  
TORMLB  
FLC127-080015-



/O.NEW.KMLB.TO.W.0011.061107T2337Z-061108T0015Z/

BULLETIN - EAS ACTIVATION REQUESTED  
TORNADO WARNING  
NATIONAL WEATHER SERVICE MELBOURNE FL  
637 PM EST TUE NOV 7 2006

THE NATIONAL WEATHER SERVICE IN MELBOURNE HAS ISSUED A

- \* TORNADO WARNING FOR...  
SOUTHEASTERN VOLUSIA COUNTY IN EAST CENTRAL FLORIDA  
THIS INCLUDES THE CITIES OF...PONCE INLET...OSTEEN...OAK HILL...NEW  
SMYRNA BEACH...MAYTOWN...EDGEWATER
- \* UNTIL 715 PM EST
- \* AT 634 PM EST...NATIONAL WEATHER SERVICE DOPPLER RADAR INDICATED A  
SEVERE THUNDERSTORM CAPABLE OF PRODUCING A TORNADO NEAR  
OSTEEN...OR  
ABOUT NEAR GENEVA...MOVING NORTHEAST AT 35 MPH.
- \* THE TORNADO IS WILL BE NEAR...  
EDGEWATER AND OAK HILL BY 655 PM EST  
BETHUNE BEACH...ELDORA...APOLLO BEACH AND 7 MILES SOUTHEAST OF  
NEW  
SMYRNA BEACH BY 700 PM EST

THE SAFEST PLACE TO BE DURING A TORNADO IS IN A STRONG BUILDING ON  
THE LOWEST FLOOR...IN AN INTERIOR ROOM SUCH AS A BATHROOM OR  
CLOSET.  
KEEP AWAY FROM WINDOWS. GET UNDER A WORKBENCH OR OTHER PIECE  
OF  
STURDY FURNITURE. USE BLANKETS OR PILLOWS TO COVER YOUR BODY.

EVACUATE MOBILE HOMES OR VEHICLES FOR MORE SUBSTANTIAL SHELTER.  
IF NO  
SHELTER IS AVAILABLE...LIE FLAT IN THE NEAREST DITCH OR OTHER LOW  
SPOT AND COVER YOUR HEAD WITH YOUR HANDS. ABANDON YOUR VEHICLE  
IF THE  
TORNADO IS NEARBY.

LAT...LON 2883 8125 2870 8102 2888 8078 2911 8094

---

NWUS52 KMLB 072346  
LSRMLB

PRELIMINARY LOCAL STORM REPORT  
NATIONAL WEATHER SERVICE MELBOURNE FL  
646 PM EST TUE NOV 07 2006

..TIME... ..EVENT... ..CITY LOCATION... ..LAT.LON...  
..DATE... ..MAG.... ..COUNTY LOCATION..ST.. ..SOURCE....

..REMARKS..

0631 PM TORNADO 2 W OVIEDO 28.66N 81.21W  
11/07/2006 SEMINOLE FL FIRE DEPT/RESCUE

SEMINOLE COUNTY FIRE DISPATCH REPORTED SEVERAL ROOFS  
DAMAGED / REMOVED NEAR 417/426. DAMAGE APPEARS TO BE  
ALONG A TRACK, POSSIBLY FROM A TORNADO.

&&

\$\$

JRC

---

WWUS52 KMLB 072351  
SVSMLB

SEVERE WEATHER STATEMENT  
NATIONAL WEATHER SERVICE MELBOURNE FL  
651 PM EST TUE NOV 7 2006

FLC117-080001-  
/O.EXP.KMLB.TO.W.0010.000000T0000Z-061108T0000Z/  
SEMINOLE FL-  
651 PM EST TUE NOV 7 2006

...THE TORNADO WARNING FOR SOUTHERN SEMINOLE COUNTY WILL EXPIRE  
AT  
700 PM EST...

LAT...LON 2869 8139 2858 8132 2861 8105 2875 8120

\$\$

---

NWUS52 KMLB 072352  
LSRMLB

PRELIMINARY LOCAL STORM REPORT  
NATIONAL WEATHER SERVICE MELBOURNE FL  
652 PM EST TUE NOV 07 2006

..TIME... ..EVENT... ..CITY LOCATION... ..LAT.LON...  
..DATE... ..MAG.... ..COUNTY LOCATION..ST.. ..SOURCE....  
..REMARKS..

0630 PM TORNADO OVIEDO 28.66N 81.18W  
11/07/2006 SEMINOLE FL PUBLIC

PUBLIC REPORT OF DEBRIS IN THE AIR AND LOUD ROAR OF WIND  
NEAR ALAFAYA TRAIL AND MITCHELL HAMMOCK IN OVIEDO.

&&

\$\$

JRC

---

NWUS52 KMLB 072357  
LSRMLB

PRELIMINARY LOCAL STORM REPORT  
NATIONAL WEATHER SERVICE MELBOURNE FL  
656 PM EST TUE NOV 07 2006

..TIME... ..EVENT... ..CITY LOCATION... ..LAT.LON...  
..DATE... ..MAG.... ..COUNTY LOCATION..ST.. ..SOURCE....  
..REMARKS..

0625 PM TORNADO OVIEDO 28.66N 81.18W  
11/07/2006 SEMINOLE FL BROADCAST MEDIA

NEWS CHANNEL 13 REPORTED STRONG WINDS AND BLOWN  
TRANSFORMERS AT RED BUG LAKE RD. AND 417 IN OVIEDO.

&&

\$\$

JRC

---

**Damage Photos:**



F1 damage to home  
in Seminole County



F0 damage to home in  
Seminole County



F0 damage to  
warehouse in  
Seminole County



Debris beyond track.



F1 damage to home  
in Seminole County



F0 damage to home in  
Seminole County



F1 damage to home in  
Seminole County



Damaged interior of  
home in Seminole  
County



Completely demolished mobile home (unsecured) in Seminole County



Path through a brick wall in Seminole County.



F0 damage to apartment building in Orange County.



Tree uprooted by wind in Orange County (near overturned truck)



Twisted tree in Seminole County



Truck overturned by wind in Orange County



F0 damage to home in Orange County



F0 damage to apartment building in Orange County.