



# Drought Information Statement for Eastern Washington & North Idaho

Valid June 30, 2024

Issued By: NWS Spokane, WA

Contact Information: [w-otx.webmaster@noaa.gov](mailto:w-otx.webmaster@noaa.gov)

- This product will be updated by July 19, 2024 or sooner if drought conditions change significantly.
- Please see all currently available products at <https://drought.gov/drought-information-statements>.
- Please visit <https://www.weather.gov/otx/DroughtInformationStatement> for previous statements.
- Please visit <https://www.drought.gov/drought-status-updates> for regional drought status updates.

- DROUGHT CONTINUES ACROSS THE INLAND NW
  - Severe drought expands across central WA
  - Severe drought remains over the central ID Panhandle



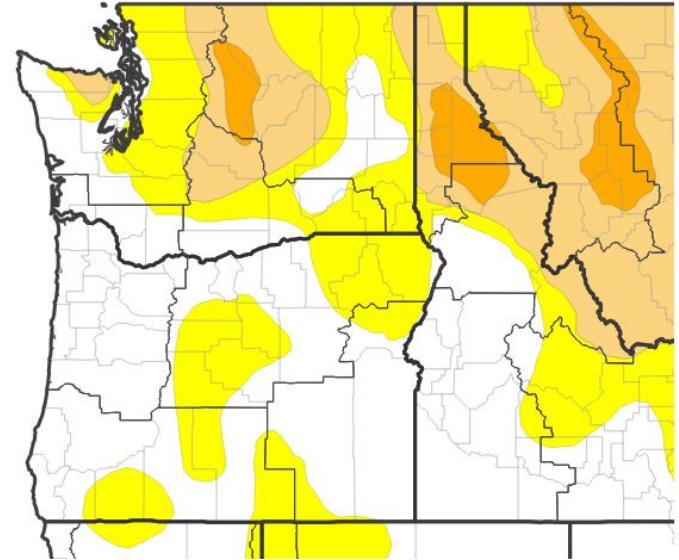


# U.S. Drought Monitor

Link to the [latest U.S. Drought Monitor](#) for eastern Washington and north Idaho

- Drought intensity and Extent
  - **D2 (Severe Drought)**: central Idaho Panhandle, **less than 15%**
  - **D1 (Moderate Drought)**: central WA, parts of northeast WA, and much of the ID Panhandle, **35%**
  - **D0: (Abnormally Dry)**: Parts of eastern WA, **38%**
  - NONE: **12%** in eastern WA

## U.S. Drought Monitor



## U.S. Drought Monitor



Source(s): NDMC, NOAA, USDA; image courtesy of Drought.gov

Data Valid: 06/25/24

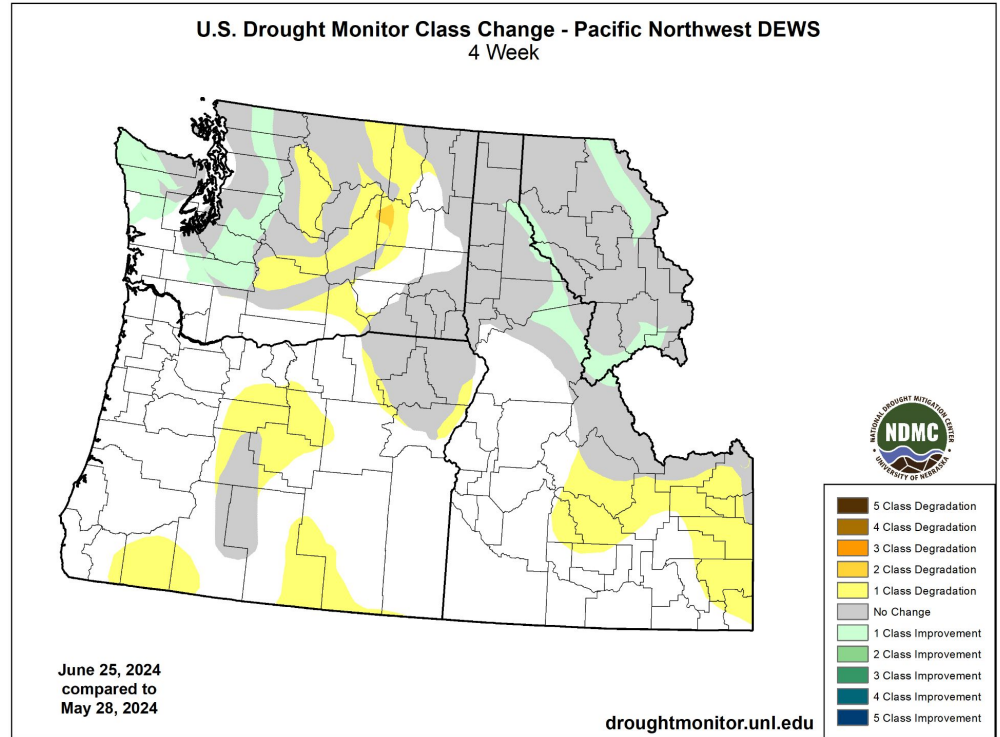




# Recent Change in Drought Intensity

Link to the latest 4 week [change map](#) for eastern Washington and north Idaho

- Four Week Drought Monitor Class Change
  - No Change: parts of eastern WA and much of north ID
  - Drought Improved: central ID Panhandle
  - Drought degraded: central WA



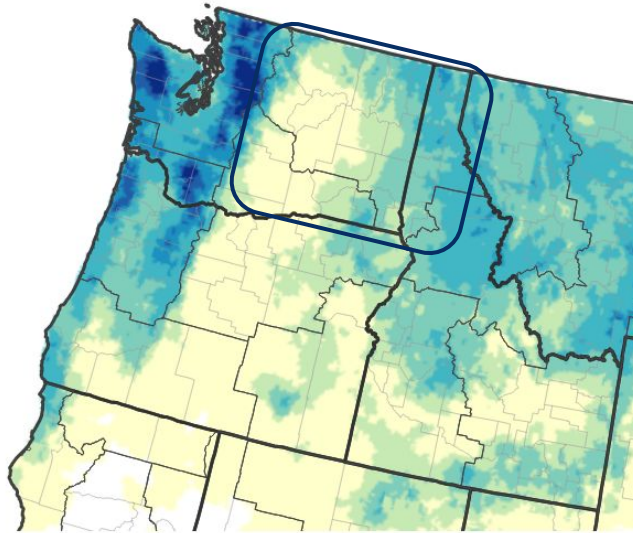


# Precipitation

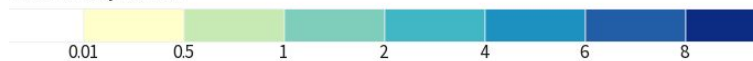
Last 30 Days

- Last 30 Days were much drier across the Inland NW with less than a 0.5" across central WA which is 25% or less than normal for this time of the year.

NPS 30-Day Precipitation Accumulations (inches)



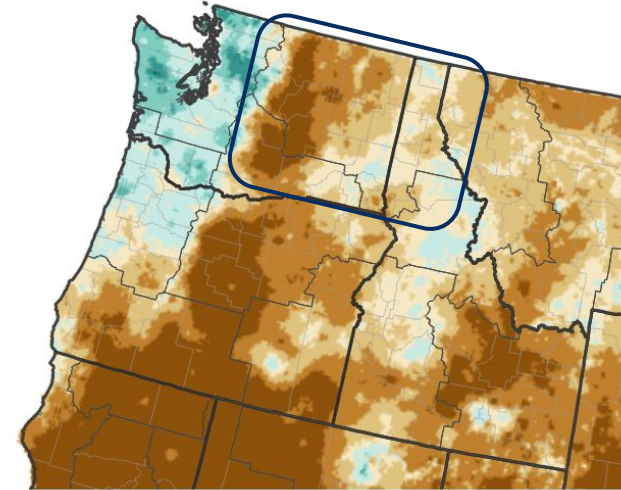
Legend for Inches of Precipitation



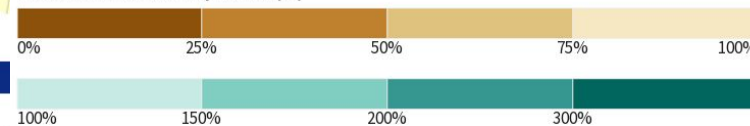
Source(s): National Weather Service National Water Prediction Service; image courtesy of Drought.gov

Data Valid: 06/25

30-Day Precipitation: Percent of PRISM Normal



Legend for Percent of Normal Precipitation (%)



Source(s): National Weather Service National Water Prediction Service; image courtesy of Drought.gov

Data Valid: 06/23/24



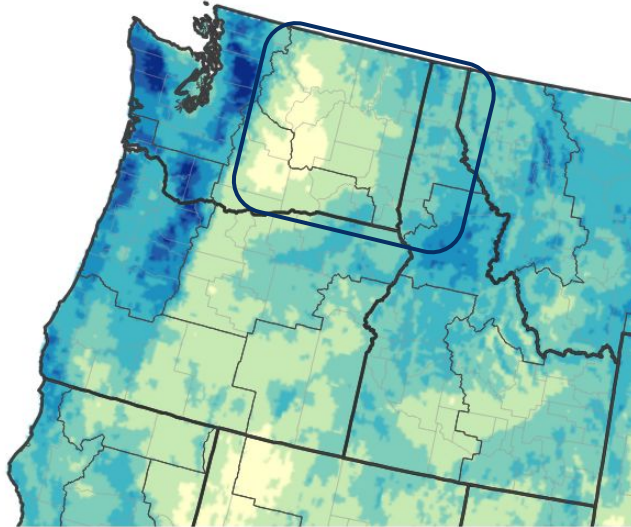


# Precipitation

## Last 90 Days

- Last 90 Days also exhibited below normal precipitation across the Inland NW, especially in the lee of the Cascades.

### VPS 90-Day Precipitation Accumulations (inches)



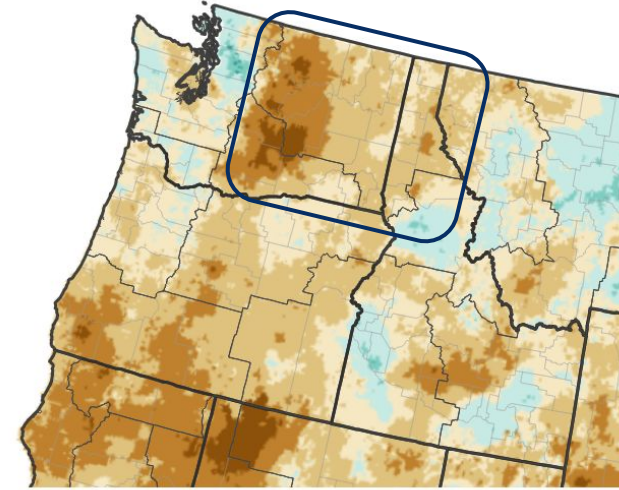
#### Legend of Precipitation



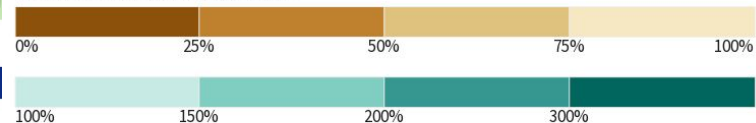
Source(s): National Weather Service National Water Prediction Service; image courtesy of Drought.gov

Data Valid: 06/23

### 90-Day Precipitation: Percent of PRISM Normal



#### Percent of Normal Precipitation (%)



Source(s): National Weather Service National Water Prediction Service; image courtesy of Drought.gov

Data Valid: 06/29/24



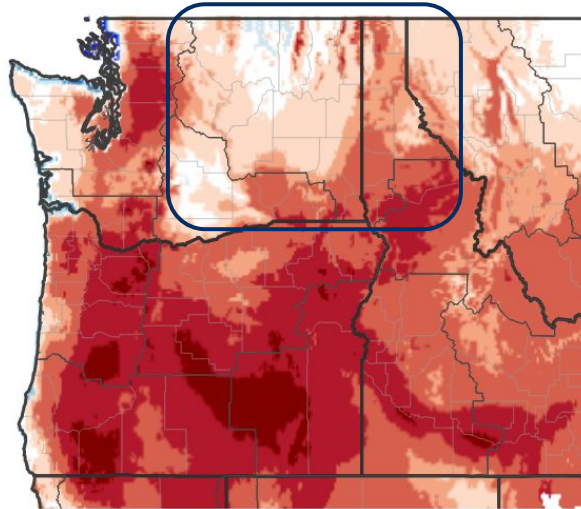


# Temperature

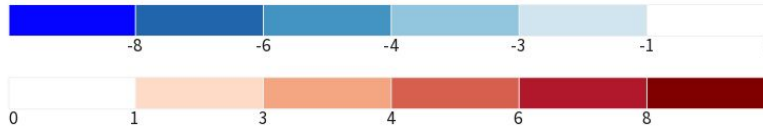
Last 7 Days and 30 Days

- Temperatures for the last week were mostly warmer than normal across the Inland NW, meanwhile temperatures were near to below normal for much of June.

7-Day Temperature Anomaly

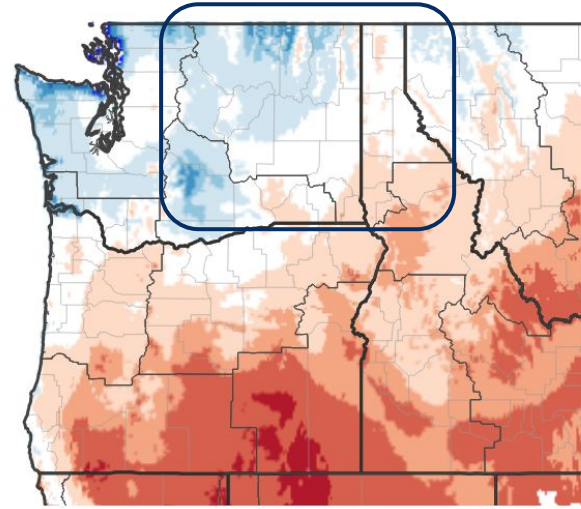


Departure from Normal Max Temperature (°F)

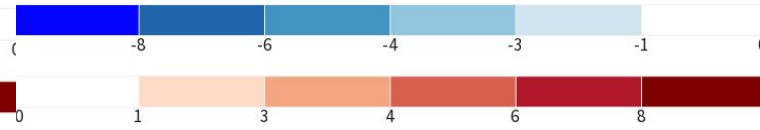


Source(s): NOAA's National Centers for Environmental Information; image courtesy of Drought.gov

30-Day Temperature Anomaly



Departure from Normal Max Temperature (°F)



Data Valid: 06/26/2024 Source(s): NOAA's National Centers for Environmental Information; image courtesy of Drought.gov Data Valid: 06/26/2024





# Summary of Impacts

Links: See/submit [Condition Monitoring Observer Reports \(CMOR\)](#) and view the [Drought Impacts Reporter](#)

## Hydrologic Impacts

- Stream flows remain near to below normal across the region as runoff from mountain snow has slowed.

## Agricultural Impacts

- Soil moisture is low yet crop moisture is near normal. Haying has begun. Winter Wheat looks good.

## Fire Hazard Impacts

- Fine fuels continue to cure, and spotty grass fires have occurred on dry windy days. The significant wildland fire potential looks normal for Inland NW through July with increased risk for north ID by Aug

## Mitigation Actions

- WA declared a [Drought Emergency](#) for much of the state on April 16th due to the low mountain snowpack and projected decrease in water supply.





# Hydrologic Conditions and Impacts

- Stream flows over the past 7 days have been near to below normal across much of the region. It has been a dry period with below normal precipitation. Runoff from mountain snowpack is slowing down.

Saturday, June 29, 2024

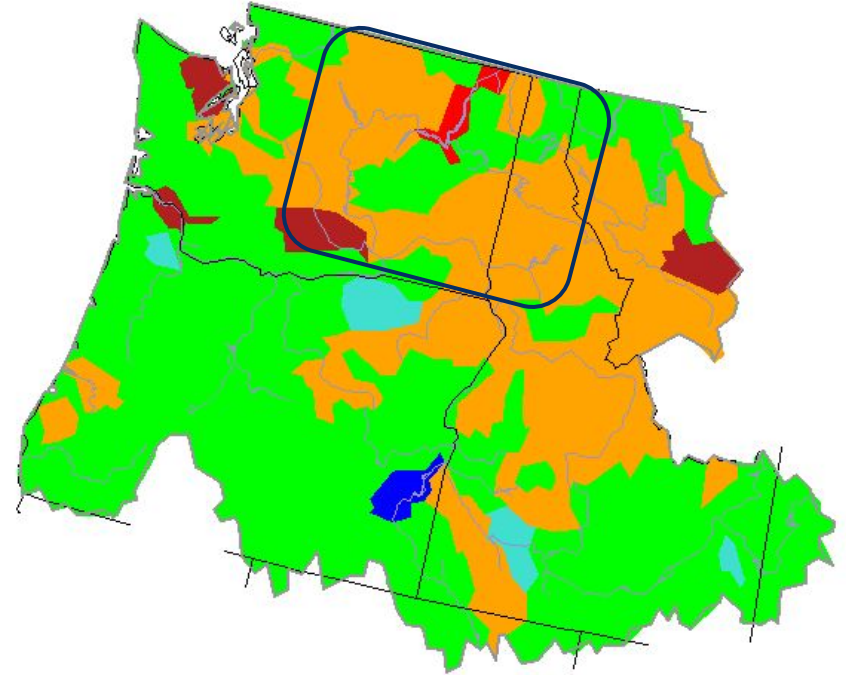


Image Caption: [USGS 7 day average streamflow HUC map](#) valid June 29, 2024

Explanation - Percentile classes

Low	<10	10-24	25-75	76-90	>90	High	No Data	
	Much below normal	Below normal	Normal	Above normal	Much above normal			



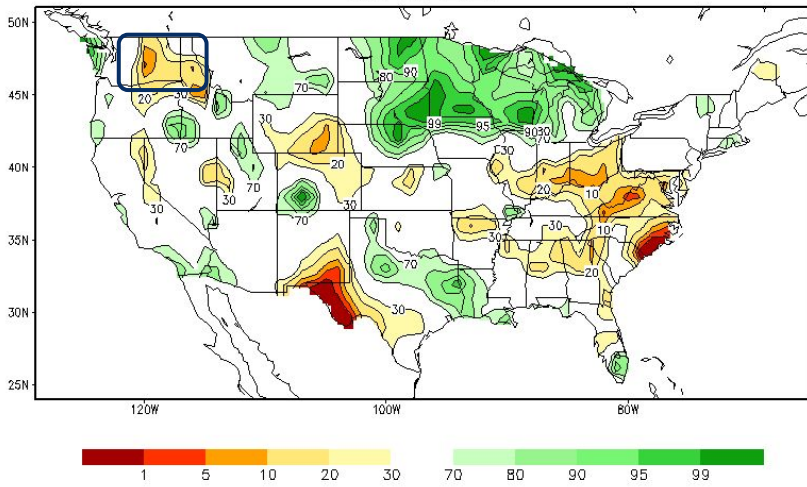




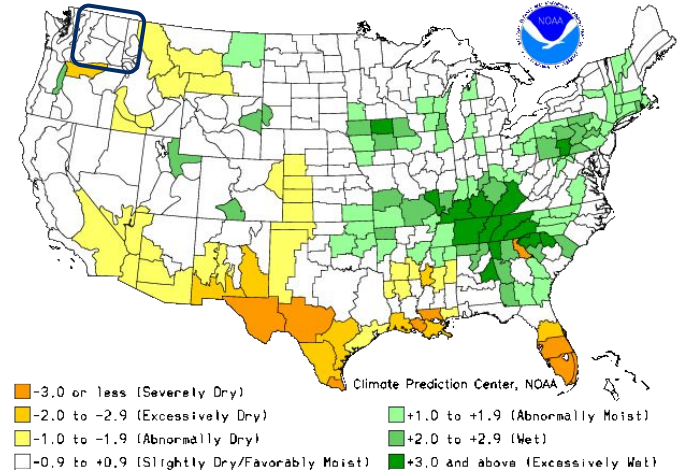
# Agricultural Conditions and Impacts

- Soil moisture remains drier than normal across much of the Inland NW, especially over the Cascades and the ID Panhandle.
- Crop moisture index was near normal for many areas. Despite the lack of precipitation, hay cutting was underway. Cattle on pasture were doing well. Winter wheat looked good and began to head in some areas.

Calculated Soil Moisture Ranking Percentile  
JUN 29, 2024



Crop Moisture Index by Division  
Weekly Value for Period Ending JUN 22, 2024  
Short Term Need vs. Available Water in a Shallow Soil Profile



Climate Prediction Center, NOAA

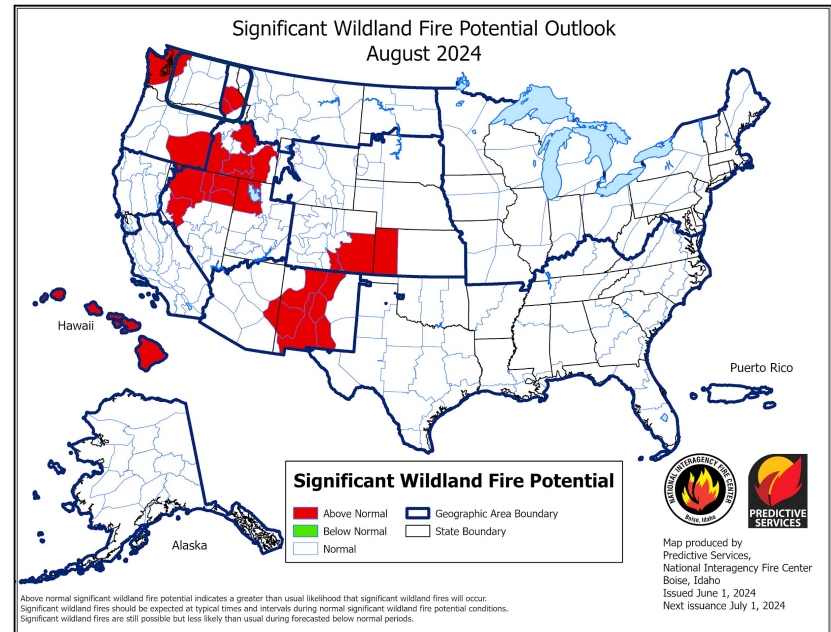
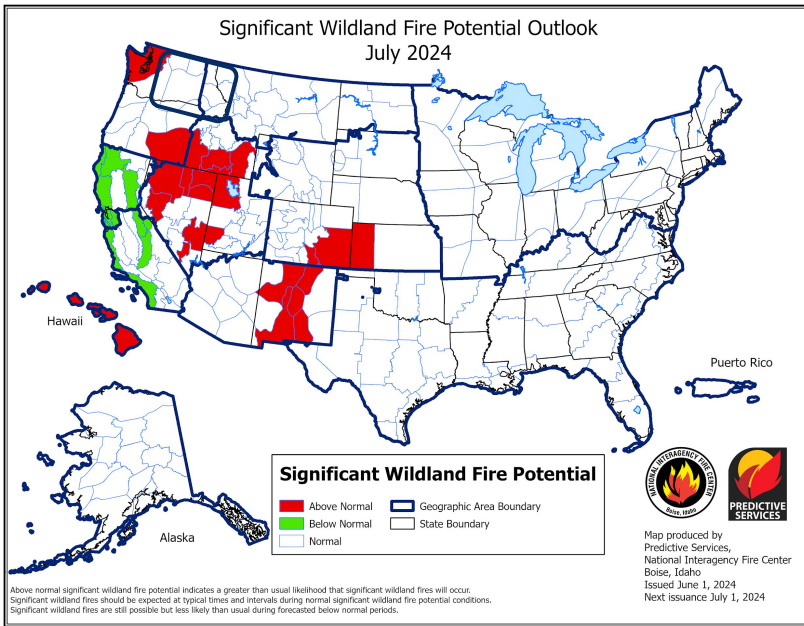
■ -3.0 or less (Severely Dry)	■ +1.0 to +1.9 (Abnormally Moist)
■ -2.0 to -2.9 (Excessively Dry)	■ +2.0 to +2.9 (Wet)
■ -1.0 to -1.9 (Abnormally Dry)	■ -0.9 to +0.9 (Slightly Dry/Favorably Moist)
■ +3.0 and above (Excessively Wet)	



# Fire Hazard Impacts

Link to [Wildfire Potential Outlooks from the National Interagency Coordination Center](#).

- Fine fuels continue to cure and dry, and spotty grass fires have occurred on dry windy days.
- The significant wildland fire potential outlook looks normal for the Inland NW with an elevated risk in western WA by July and expanding into the southern ID Panhandle by August.

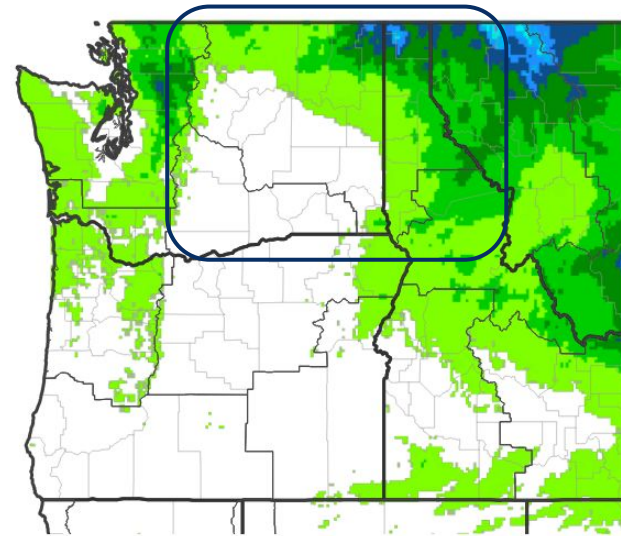




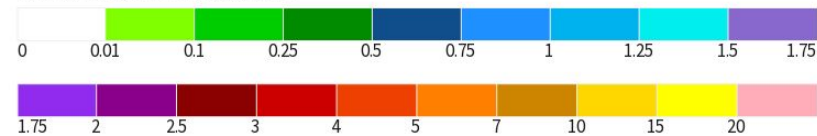
# Seven Day Precipitation Forecast

- Here is a forecast of precipitation for the Pacific NW for the upcoming week.
- Showery conditions will be found mainly across the mountains through Wednesday, then drier conditions will prevail through the weekend.
- The 8-14 day outlook favors below normal precipitation and above normal temperatures for the 2nd week of July.

## 7-Day Quantitative Precipitation Forecast



Predicted Inches of Precipitation



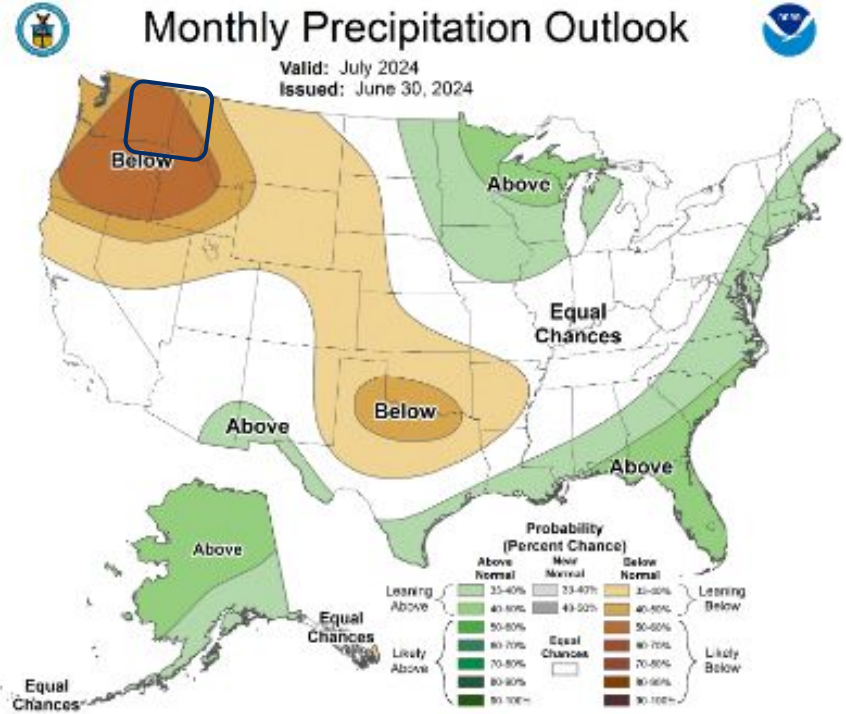
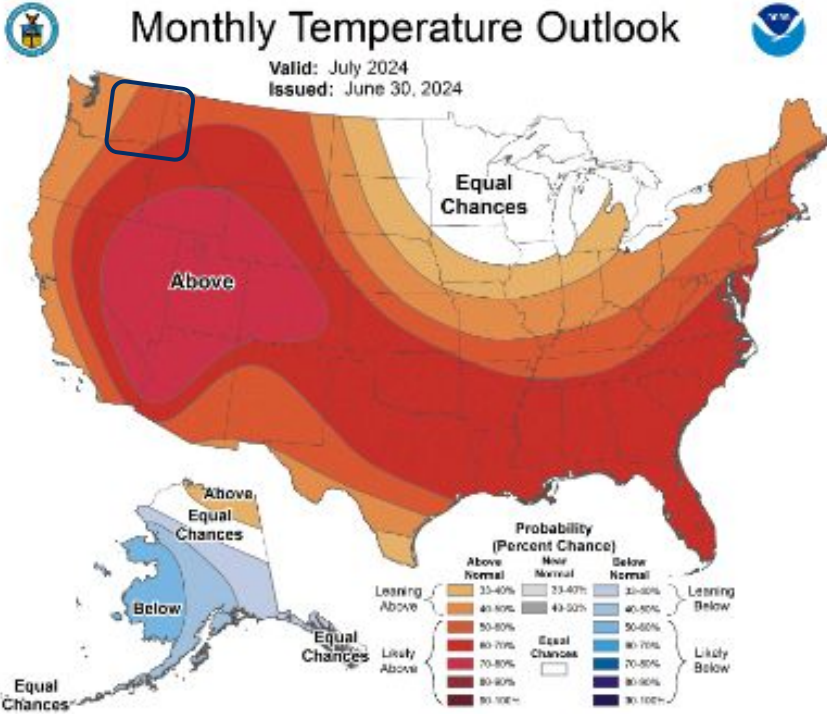
Source(s): National Weather Service Weather Prediction Center; image courtesy of Drought.gov Last Updated: 06/30/24



# Monthly Outlook

The latest monthly and seasonal outlooks can be found on the [CPC homepage](#)

- JULY** is favoring above normal temperatures and below normal precipitation for the Inland NW.

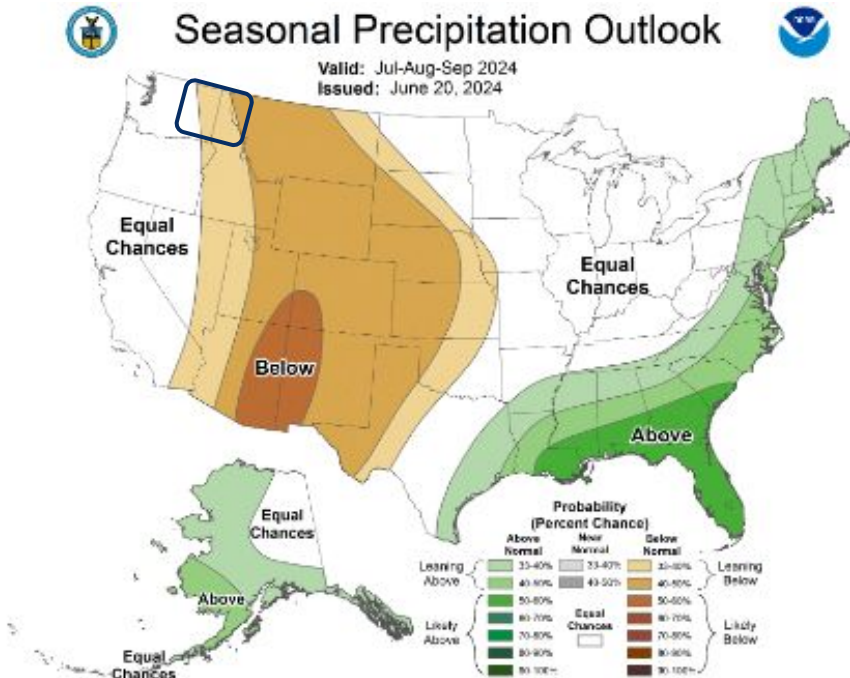
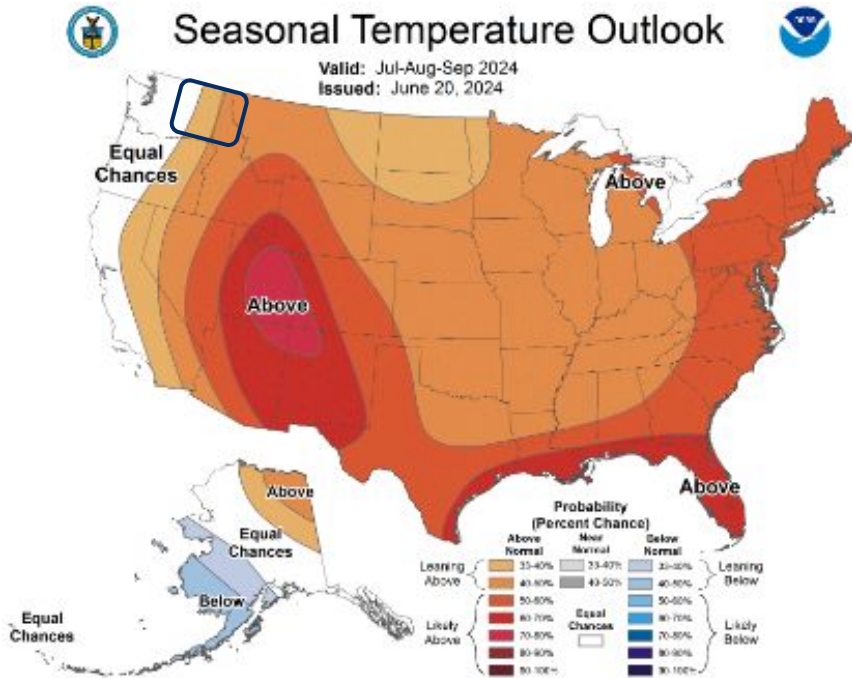




# Long-Range Outlooks

The latest seasonal outlooks can be found on the [CPC homepage](#)

- **JULY-AUG-SEP** outlook has shifted its trend with equal chances to slightly above normal temperatures and equal chances to slightly below normal precipitation across the Inland NW.





# Drought Outlook

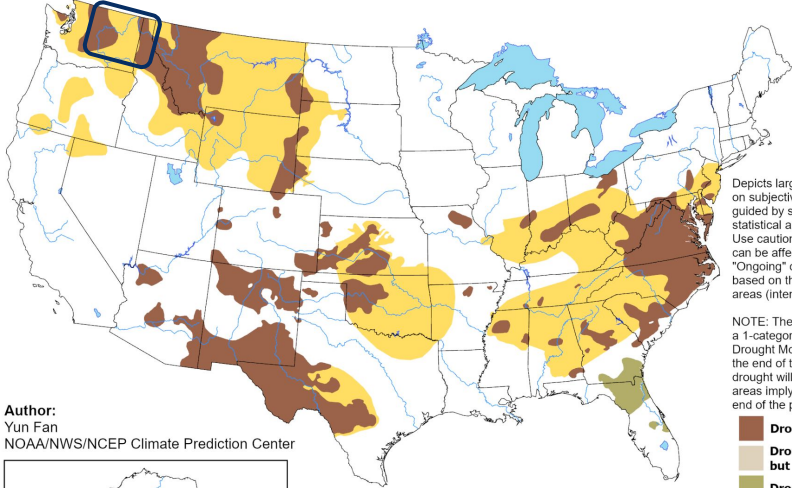
The latest monthly and seasonal outlooks can be found on the [CPC homepage](#)

- The Monthly and Seasonal Drought Outlook show drought is likely to persist and expand across the region.

## U.S. Monthly Drought Outlook

### Drought Tendency During the Valid Period

Valid for July 2024  
Released June 30, 2024

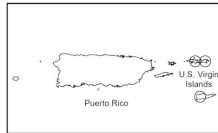
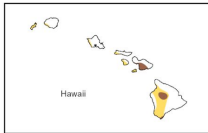


Depicts large-scale trends based on subjectively derived probabilities guided by short- and long-range statistical and dynamical forecasts. Use caution for applications that can be affected by short lived events. "Ongoing" drought areas are based on the U.S. Drought Monitor areas (intensities of D1 to D4).

NOTE: The tan areas imply at least a 1-category improvement in the Drought Monitor intensity levels by the end of the period, although drought will remain. The green areas imply drought removal by the end of the period (D0 or none).

- Drought persists
- Drought remains, but improves
- Drought removal likely
- Drought development likely
- No drought

Author:  
Yun Fan  
NOAA/NWS/NCEP Climate Prediction Center

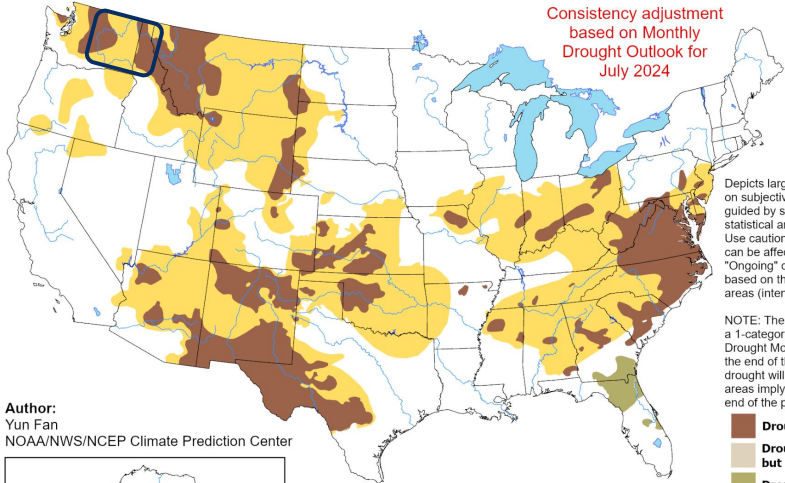


<https://go.usa.gov/3eZGd>

## U.S. Seasonal Drought Outlook

### Drought Tendency During the Valid Period

Valid for July 1 - September 30, 2024  
Released June 30, 2024



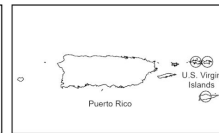
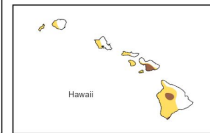
Consistency adjustment  
based on Monthly  
Drought Outlook for  
July 2024

Depicts large-scale trends based on subjectively derived probabilities guided by short- and long-range statistical and dynamical forecasts. Use caution for applications that can be affected by short lived events. "Ongoing" drought areas are based on the U.S. Drought Monitor areas (intensities of D1 to D4).

NOTE: The tan areas imply at least a 1-category improvement in the Drought Monitor intensity levels by the end of the period, although drought will remain. The green areas imply drought removal by the end of the period (D0 or none).

- Drought persists
- Drought remains, but improves
- Drought removal likely
- Drought development likely
- No drought

Author:  
Yun Fan  
NOAA/NWS/NCEP Climate Prediction Center



<https://go.usa.gov/3eZ73>



National Oceanic and  
Atmospheric Administration

U.S. Department of Commerce

National Weather Service  
Spokane, WA