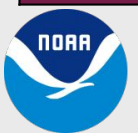


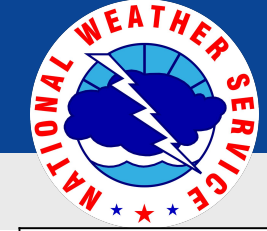
# Annual Climate Summary

## 2024 Overview

### Monthly Climate Overview - Annual 2024

Category	Springfield	Joplin	West Plains	Vichy
Maximum Temperature	97	100	96	96
Average Max. Temperature	70.5	72.5	71.1	68.9
Minimum Temperature	-5	-7	3	-7
Average Min. Temperature	49	50.3	49.7	47.7
Average Mean Temperature	59.7	61.4	60.4	58.3
Departure from Normal	+2.3	+3.3	3.4	2.8
Temperature Rank	1st warmest / 137	5th warmest / 97	1st warmest / 77	6th warmest / 80
Days of 90 degrees or warmer	37	67	34	25
# of Days of Highs of 32 or lower	8	6	4	9
# of Days of Lows of 32 or lower	70	62	68	73
# of Days of 0 degrees or lower	4	4	0	5
Precipitation	43.19	36.68	54.49	43.23
Departure from Normal	-1.52	-8.90	7.24	0.16
Precipitation Rank	63rd wettest / 137	28th driest / 115	13th wettest / 77	25th wettest / 83
Days of 0.01" or more	88	92	99	99
Days of 0.10" or more	61	54	65	65
Days of 0.50" or more	34	25	34	28
Days of 1.00" or more	11	13	17	13
Annual Snowfall	2.8			



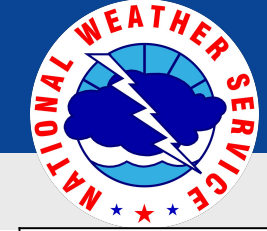


# Annual Climate Summary

## 2024 Monthly Temperatures and Departures from Normal

	Springfield		Joplin		West Plains		Vichy	
	Mean	Departure	Mean	Departure	Mean	Departure	Mean	Departure
<b>January</b>	30.3	-4.0	31.2	-3.7	34.4	-0.1	28.7	-2.9
<b>February</b>	47.1	+8.4	48.7	+9.3	48.2	+9.3	45.8	+9.7
<b>March</b>	52.2	+4.6	53.8	+5.2	53.4	+5.8	51.3	+5.7
<b>April</b>	59.4	+2.4	60.7	+2.8	60.8	+3.4	58.4	+2.6
<b>May</b>	68.9	+2.9	69.4	+2.9	70.0	+4.4	68.0	+3.3
<b>June</b>	76.2	+1.3	78.5	+2.9	76.4	+2.5	76.5	+3.4
<b>July</b>	77.6	-1.6	80.1	+0.2	77.6	-0.3	76.1	-1.3
<b>August</b>	78.1	-0.1	79.9	+0.9	77.2	+0.3	75.1	-1.2
<b>September</b>	71.2	+0.9	72.9	+2.2	70.9	+1.8	69.5	+1.2
<b>October</b>	65.0	+6.4	66.5	+7.2	62.2	+4.3	62.1	+5.0
<b>November</b>	50.4	+3.7	52.1	+4.3	52.0	+5.4	49.1	+4.0
<b>December</b>	41.0	+3.6	43.1	+5.0	42.0	+4.5	39.0	+3.6





# Annual Climate Summary

## 2024 Monthly Temperatures and Departures from Normal

	Springfield		Joplin		West Plains		Vichy	
	Precip.	Departure	Precip.	Departure	Precip.	Departure	Precip.	Departure
<b>January</b>	2.43	-0.11	2.00	0.08	4.93	2.30	3.23	1.01
<b>February</b>	0.99	-1.41	1.52	-0.46	1.36	-1.75	0.38	-1.68
<b>March</b>	2.32	-1.19	1.71	-1.58	4.31	-0.10	4.20	0.80
<b>April</b>	7.42	2.71	6.32	1.33	2.28	-3.03	4.49	-0.22
<b>May</b>	6.41	0.85	5.78	-0.78	4.90	-0.65	6.16	0.81
<b>June</b>	5.72	1.25	1.53	-4.07	2.61	-1.43	1.99	-2.47
<b>July</b>	5.15	1.30	5.10	1.13	7.77	3.56	10.02	5.59
<b>August</b>	1.46	-2.13	1.58	-1.78	7.13	3.77	2.11	-1.55
<b>September</b>	1.71	-2.60	1.14	-3.04	3.10	0.01	0.74	-3.07
<b>October</b>	1.67	-1.93	1.58	-2.22	1.44	-2.64	1.59	-1.62
<b>November</b>	5.62	2.06	6.95	3.62	9.73	5.39	5.66	2.21
<b>December</b>	2.29	-0.32	1.47	-1.13	4.93	1.81	2.66	0.35



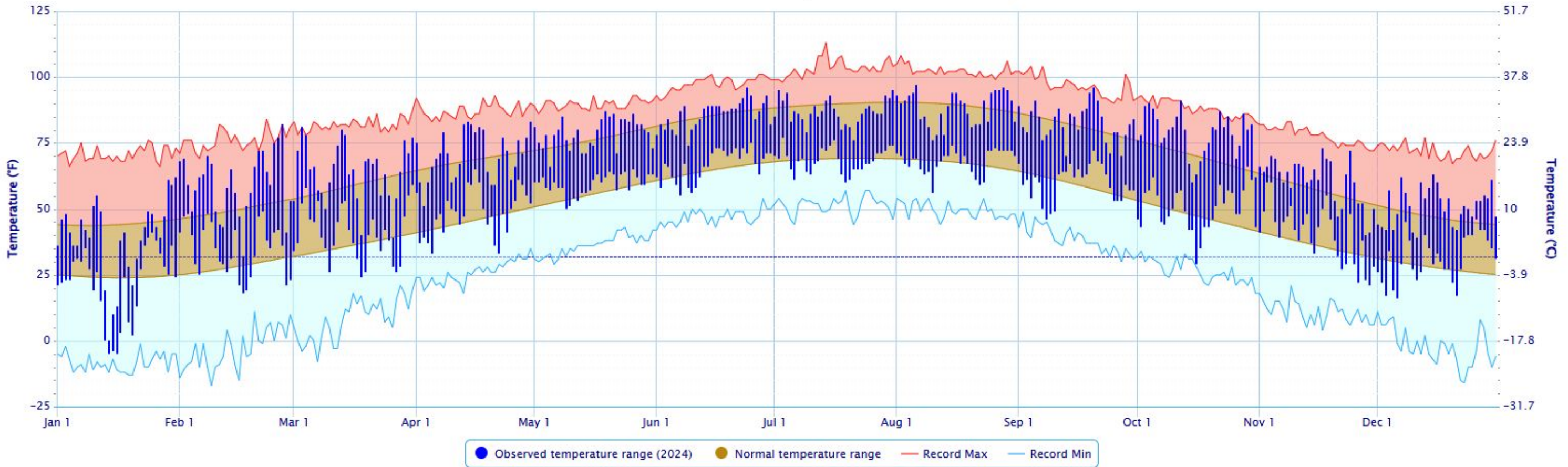


# Annual Climate Summary

## Springfield Temperature Chart

Daily Temperature Data - SPRINGFIELD WSO AP, MO

Period of Record - 1940-01-01 to 2025-01-06. Normals period: 1991-2020. Click and drag to zoom chart.



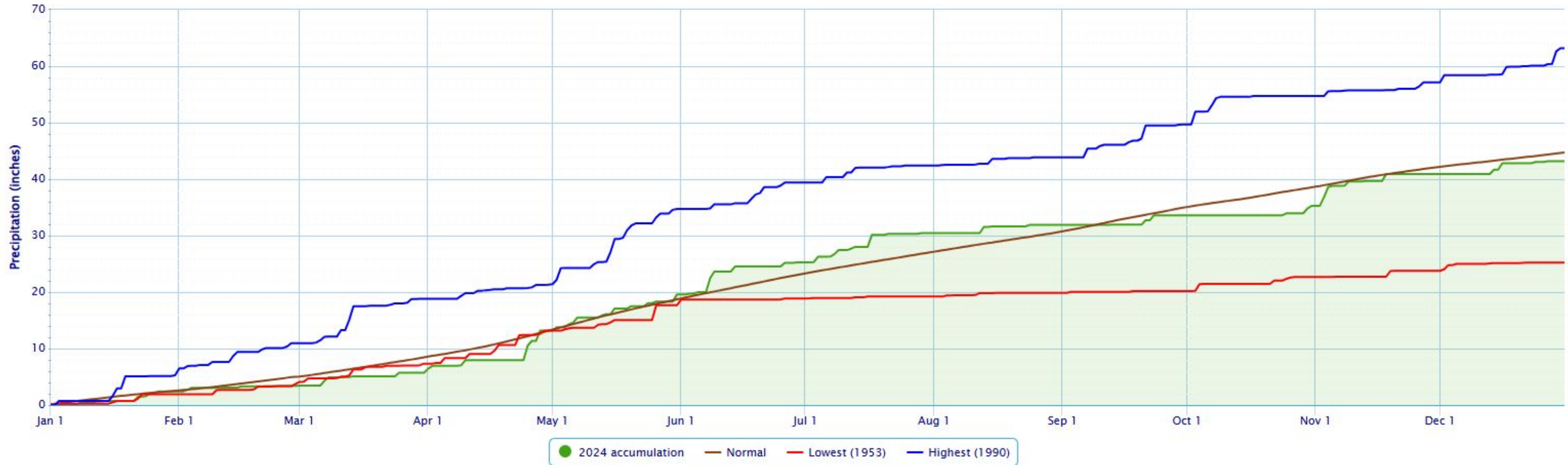


# Annual Climate Summary

## Springfield Precipitation Chart

Accumulated Precipitation – Springfield Area, MO (ThreadEx)

Click and drag to zoom to a shorter time interval; green/black diamonds represent subsequent/missing values



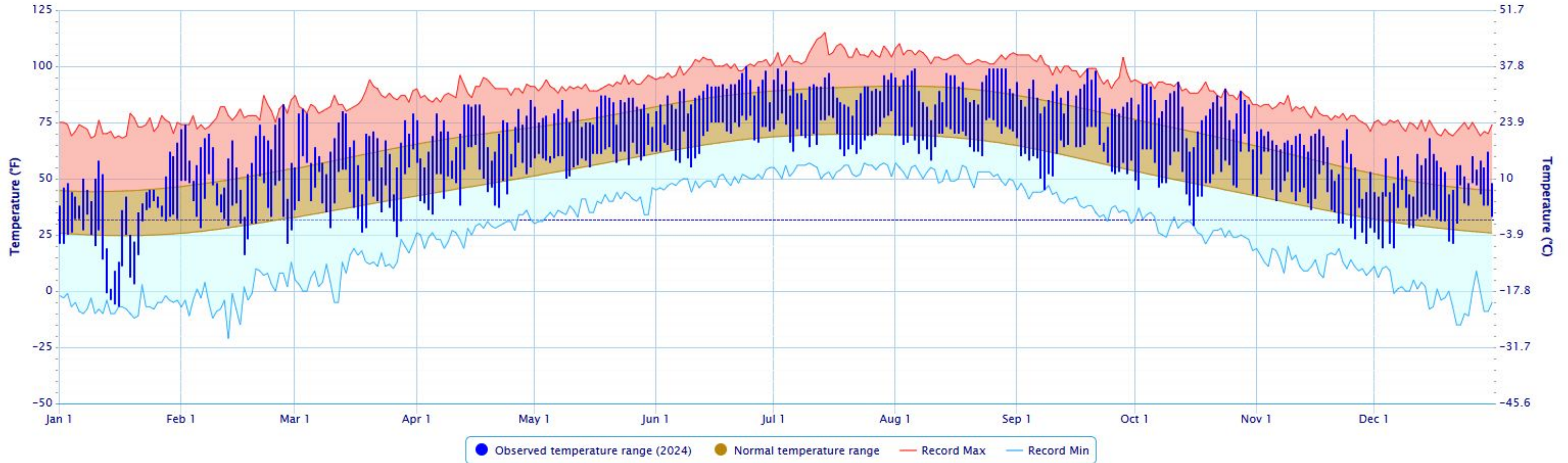


# Annual Climate Summary

## Joplin Temperature Chart

Daily Temperature Data – JOPLIN REGIONAL AIRPORT, MO

Period of Record – 1902-01-01 to 2025-01-06. Normals period: 1991-2020. Click and drag to zoom chart.



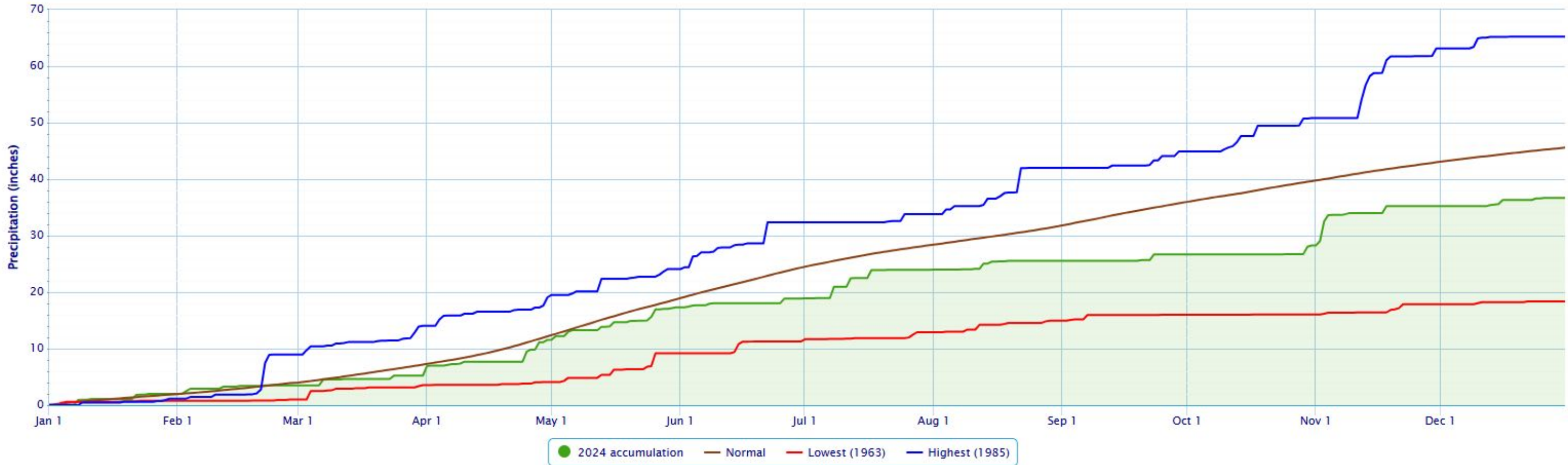


# Annual Climate Summary

## Joplin Precipitation Chart

Accumulated Precipitation - JOPLIN REGIONAL AIRPORT, MO

Click and drag to zoom to a shorter time interval; green/black diamonds represent subsequent/missing values



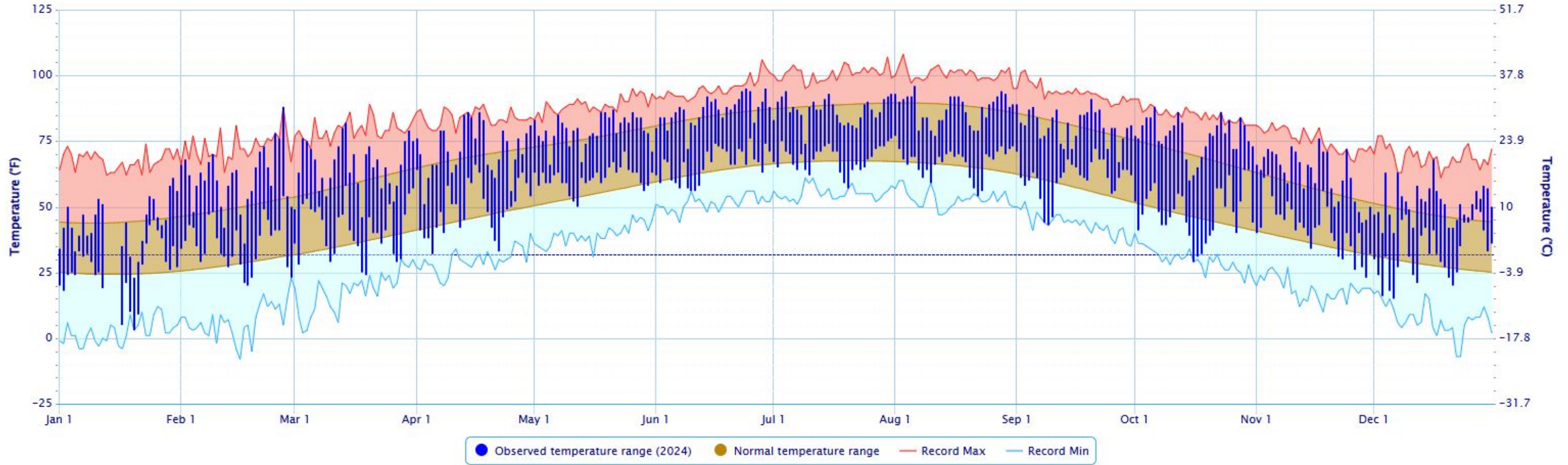


# Annual Climate Summary

## West Plains Temperature Chart

Daily Temperature Data - WEST PLAINS MUNICIPAL AP, MO

Period of Record - 1996-09-28 to 2025-01-06. Normals period: 1991-2020. Click and drag to zoom chart.





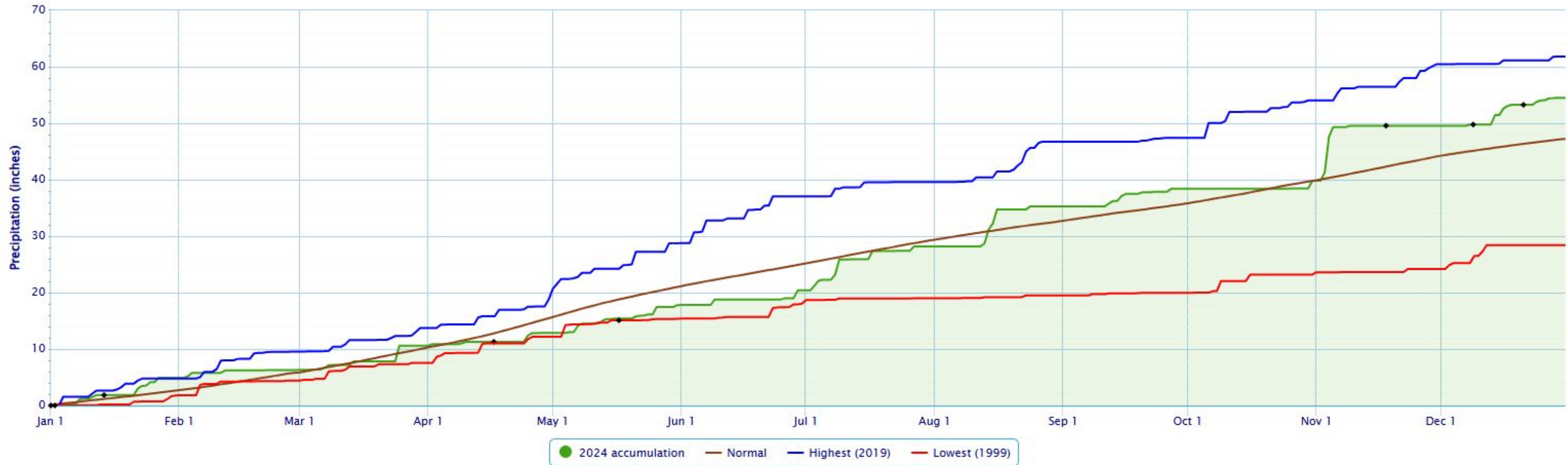


# Annual Climate Summary

## West Plains Precipitation Chart

Accumulated Precipitation – WEST PLAINS MUNICIPAL AP, MO

Click and drag to zoom to a shorter time interval; green/black diamonds represent subsequent/missing values



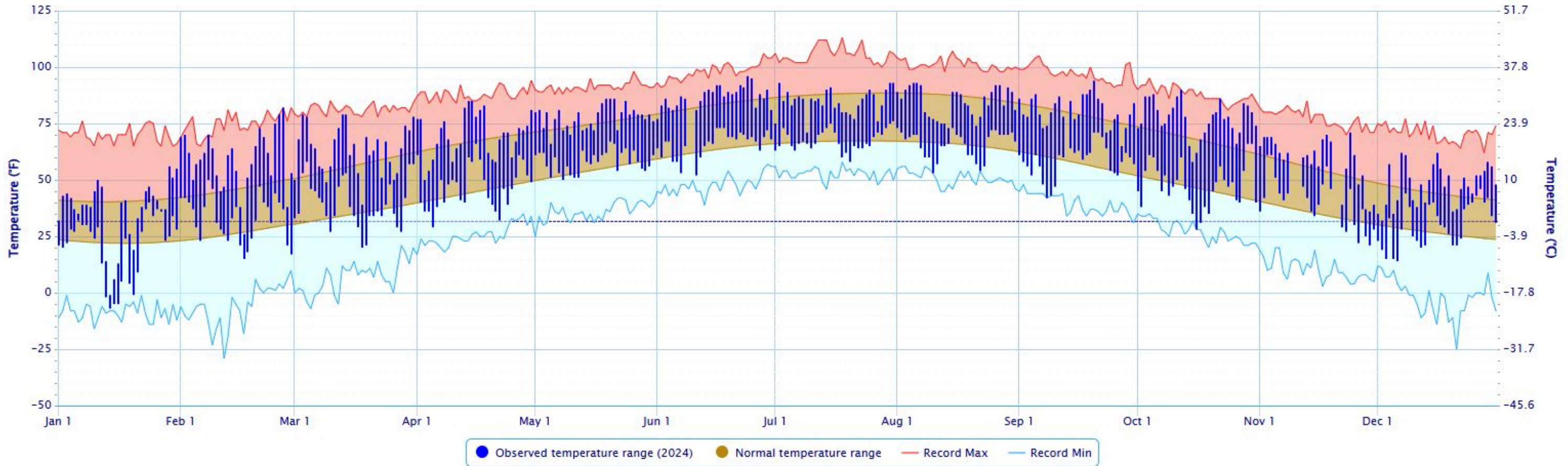


# Annual Climate Summary

## Rolla / Vichy Temperature Chart

Daily Temperature Data – VICHY ROLLA NATL AP, MO

Period of Record – 1897-05-01 to 2025-01-06. Normals period: 1991-2020. Click and drag to zoom chart.



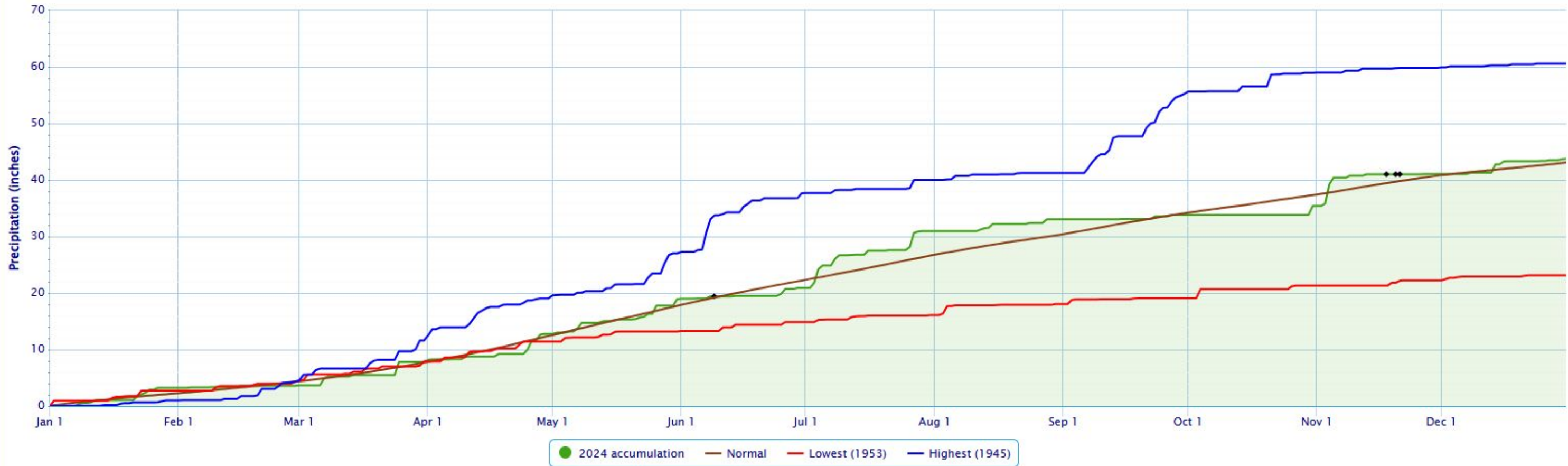


# Annual Climate Summary

## Rolla / Vichy Precipitation Chart

Accumulated Precipitation – VICHY ROLLA NATL AP, MO

Click and drag to zoom to a shorter time interval; green/black diamonds represent subsequent/missing values

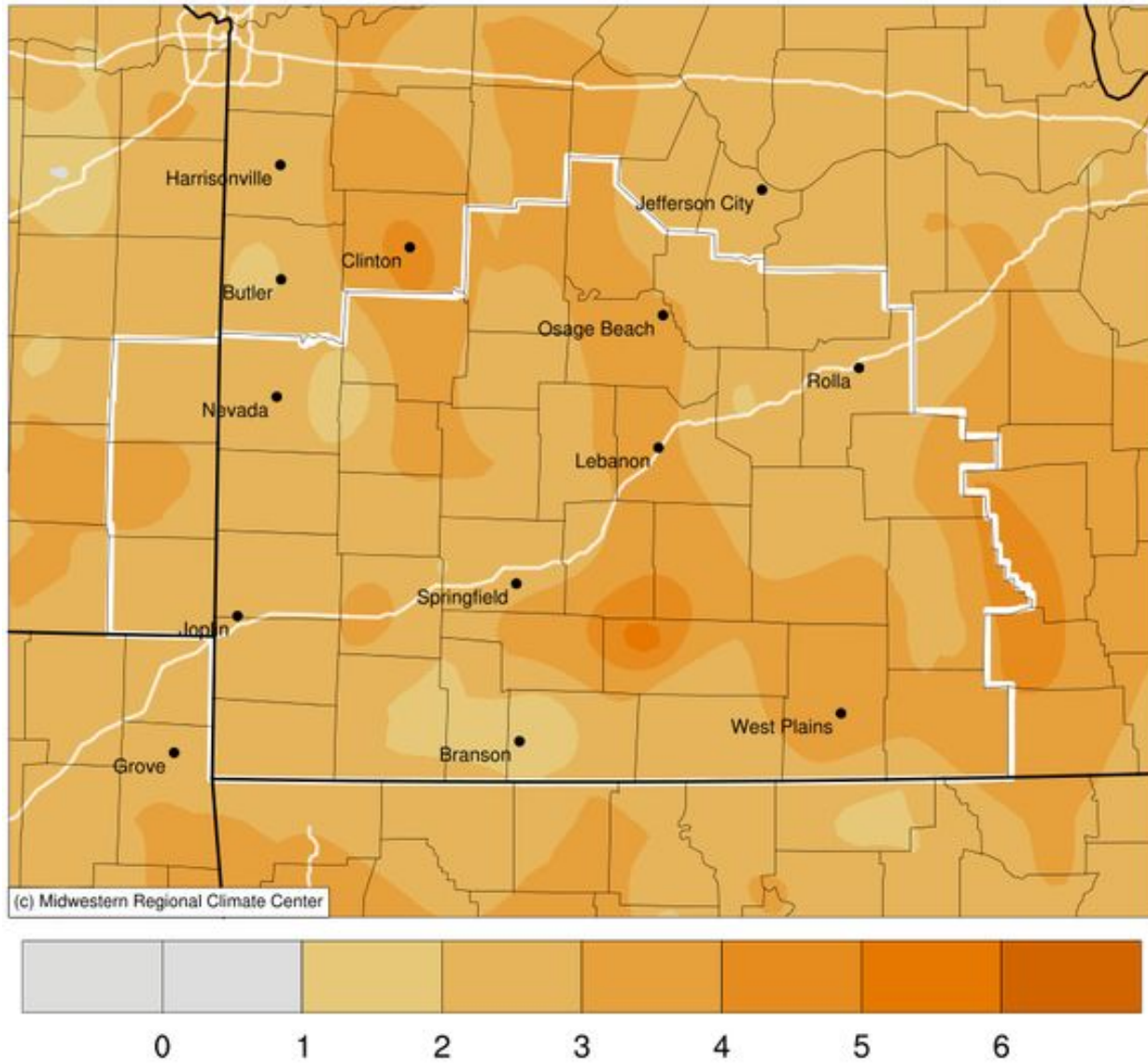




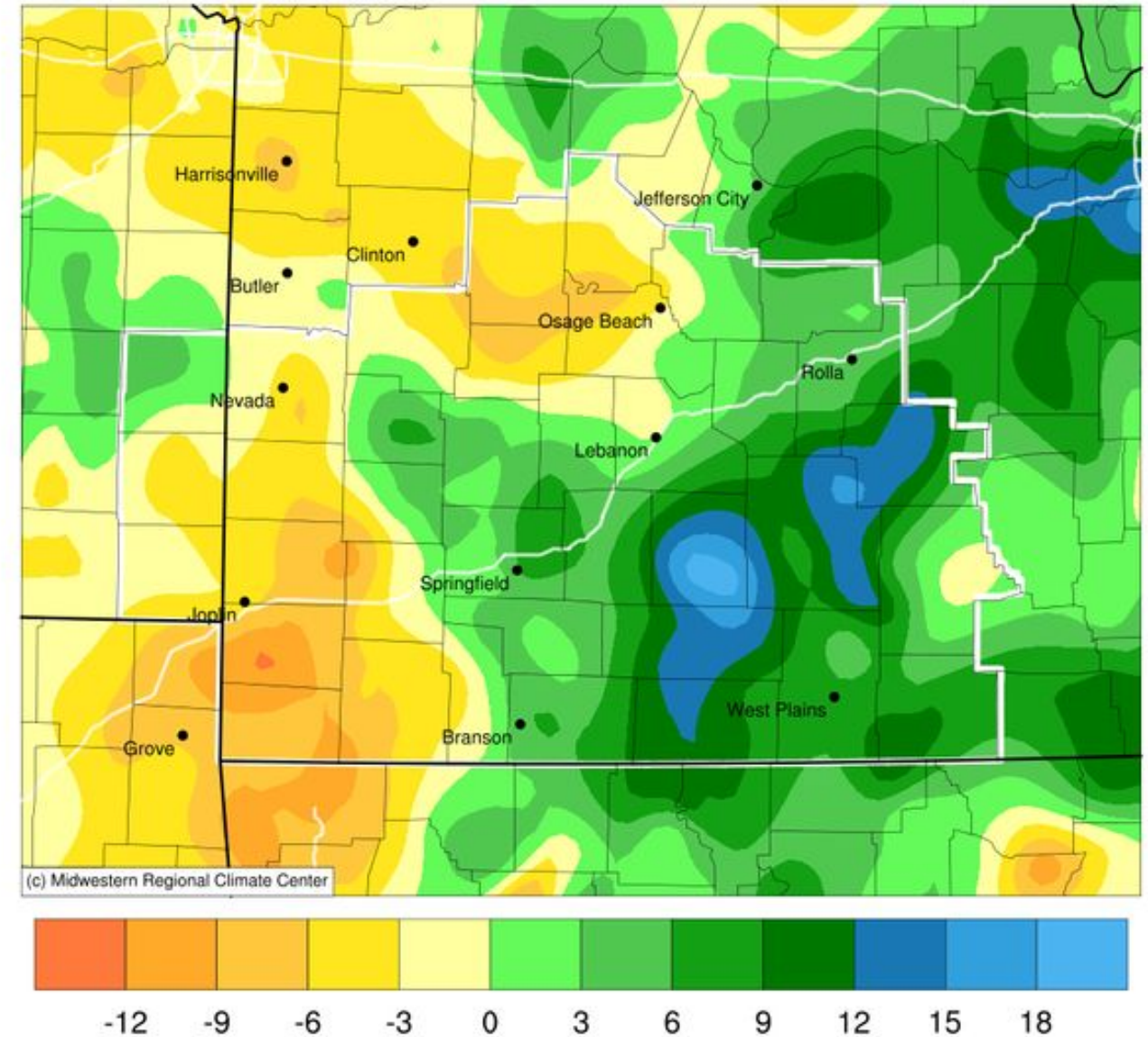
# Annual Climate Summary

## 2024 - Annual Departure Maps

Average Temperature (°F): Departure from 1991-2020 Normals  
January 01, 2024 to December 31, 2024



Accumulated Precipitation (in): Departure from 1991-2020 Normals  
January 01, 2024 to December 31, 2024





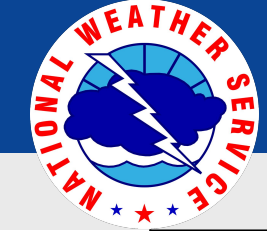
# Annual Climate Summary

## Upcoming Normals

Upcoming Normal Conditions for the Next 3 Months				
Springfield				
Month	High	Low	Precip.	Snow
January	44.3	24.2	2.54	4.4
February	49.5	28.0	2.4	2.0
March	58.9	36.2	3.51	3.3
Joplin				
Month	High	Low	Precip.	
January	44.8	25.0	1.92	
February	50.0	28.7	1.98	
March	59.8	37.4	3.29	

Upcoming Normal Conditions for the Next 3 Months			
West Plains			
Month	High	Low	Precip.
January	44.4	24.6	2.63
February	49.6	28.2	3.11
March	59.0	36.1	4.41
Rolla / Vichy			
Month	High	Low	Precip.
January	40.8	22.4	2.22
February	45.9	26.3	2.06
March	56.3	34.9	3.40





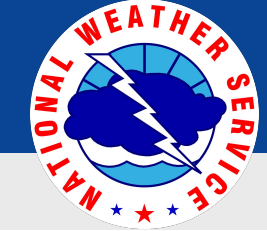
# Annual Climate Summary

## 2024 Precipitation Report

Station	Amount
HARTVILLE 0.5 SSE	76.15
SUMMERSVILLE 3.6 S	74.63
MOUNTAIN GROVE 2 N	66.75
SALEM 3.5 E	65.56
MOUNTAIN VIEW 7.9 W	64.47
HARTVILLE	64.17
MOUNTAIN GROVE 14.0 S	63.58
LICKING 4N	63.03
WEST PLAINS 10.6 S	62.85
MOUNTAIN VIEW 7.0 NE	62.14
SALEM	61.65
SALEM 1.8 NW	61.37
HOUSTON	61.30
HARTVILLE 3.8 WNW	61.05
RAYMONDVILLE 3.5 SE	60.74
MONTAUK STATE PARK	60.72
WASOLA 5N	60.22

Station	Amount
HOUSTON 5.0 SE	57.54
ALTON	57.46
MANSFIELD 3.7 SSE	57.35
HOUSTON 1.1 NE	57.26
WEST PLAINS 1.5 NW	57.24
TECUMSEH 1W	57.18
MOUNTAIN GROVE 13.0 NNW	57.17
FAIR GROVE 4.7 SSW	56.79
WEST PLAINS	56.71
STOCKTON DAM	56.58
ROLLA 3.4 NW	56.51
AVA 0.8 NNW	56.36
SALEM 10 W	56.35
WEST PLAINS 2.2 NNW	56.27
SALEM 14.9 E	56.14
BRANSON 3.8 E	56.03
WEST PLAINS 8.8 E	55.93

Station	Amount
SPRINGFIELD 4.0 SW	55.57
AVA 6NW	55.21
STOCKTON 0.5 W	55.04
FAIR PLAY 1.3 E	54.88
ALTON 1.7 NNW	54.79
SPRINGFIELD 2.6 ESE	54.61
ST. JAMES 10.1 SSE	54.56
ROLLA 3.7 WNW	54.55
WEST PLAINS MUNICIPAL A	54.49
SUMMERSVILLE 3 SE	54.35
SPRINGFIELD 0.7 ENE	54.30
PHILLIPSBURG 5.0 NW	54.03
FORT LEONARD WOOD 5.4 S	53.88
DORA 3SE	53.82
FORT LEONARD WOOD	53.79
GAINESVILLE 6.2 ENE	53.61
ROLLA 4.4 WSW	53.47



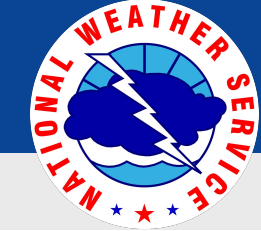
# Annual Climate Summary

## 2024 - Precipitation Report

Station	Amount
STOCKTON 2.5 NNE	53.23
BRANSON AIRPORT	53.22
SALEM 5.0 WNW	53.20
MARSHFIELD 1.4 W	53.10
STOCKTON 0.2 NW	53.05
MARSHFIELD 4 WSW	53.01
CLEVER 7.2 SE	53.00
ROLLA 3.2 SSW	52.86
ROLLA 2.2 SSE	52.70
BATTLEFIELD 3.3 E	52.64
ROLLA 8.2 SSE	52.54
HOLLISTER 3.8 SW	52.53
OZARK BEACH 2 NNE	52.43
LEBANON 1.3 E	52.40
GREENFIELD 3.1 ENE	52.31
TECUMSEH 2.2 SE	51.93
WAYNESVILLE 2 W	51.84

Station	Amount
WINONA 3 SW	51.72
BRANSON 3.2 NNW	51.67
NEWBURG 9.6 SSW	51.39
ROUND SPRING 2SW	51.36
ROLLA 0.9 SE	51.22
ROLLA MISSOURI S&T	51.18
ROLLA 7.6 SSE	51.09
BUFFALO 1.0 SW	51.02
WALNUT GROVE 6.0 ESE	50.85
BOLIVAR 9.0 N	50.39
ASH GROVE 0.4 SSW	50.24
ROLLA 2.2 S	50.22
ROLLA 8.1 SSE	50.14
SPRINGFIELD 1.0 SSE	49.72
DEVON 0.1 SE	49.66
BOLIVAR 1.0 ENE	49.64
ELDORADO SPRINGS	49.63

Station	Amount
WHITE CHURCH 6 NNE	49.60
BOLIVAR 1 NE	49.46
ST. JAMES 1.2 SE	49.31
WAYNESVILLE 3.5 WSW	49.12
WALNUT GROVE 5.2 SE	49.11
CLEVER 4.0 ENE	49.10
GOODSON 0.5 NNW	48.63
DIXON 5.2 NE	48.59
HALF WAY 0.8 WNW	48.56
BRUMLEY 5.6 SW	48.56
STRAFFORD 2.7 SW	48.46
WILLARD 5.8 NNE	48.43
MARSHFIELD 0.9 SE	48.43
FLEMINGTON 2.6 S	48.36
JERICO SPRINGS 3S	48.12
BILLINGS 1SW	48.10
ROLLA 8.1 S	47.88



# Annual Climate Summary

## 2024 - Precipitation Report

Station	Amount
HOUSTON 2.0 S	47.82
ROLLA 2.8 S	47.82
JOPLIN 1.3 NW	47.72
VIENNA 4.3 NNW	47.70
TANEYVILLE 3.9 NNE	47.63
BUFFALO 2N	47.48
ROLLA 3.3 WSW	47.41
SALEM 11.7 NNW	47.40
DUNNEGAN 2.4 NNW	47.32
MORRISVILLE 2SW	47.29
ROLLA 1.6 ENE	47.19
EMINENCE 4.7 ESE	47.17
WALNUT GROVE 5.8 NNW	47.07
WILLARD 2.6 W	46.95
STOCKTON 5.6 S	46.94
CONWAY 8.9 SW	46.73
ALDRICH 5.0 ESE	46.37

Station	Amount
FORT SCOTT	46.30
OZARK	46.12
WILLARD 3.4 SW	46.12
ELDON	46.08
SPRINGFIELD WFO	46.03
CARL JUNCTION 3.1 WSW	45.82
BROOKLINE 2.3 NNW	45.77
LEBANON 2W	45.49
TABLE ROCK DAM	45.44
COLLINS 5.5 WNW	45.41
ASH GROVE 4S	45.24
MOUNT VERNON 1.3 NNW	45.12
FLEMINGTON 1W	45.01
ROLLA 6.4 NNW	44.94
NEVADA WATER PLANT	44.87
COLUMBUS	44.84
GREENFIELD 0.8 SSW	44.60

Station	Amount
CARTHAGE 1.5 S	44.50
PITTSBURG	44.39
ROLLA 1.3 NE	44.39
ROLLA 6.4 S	44.27
HALLTOWN 5NW	44.26
FORT SCOTT 0.6 W	44.07
PITTSBURG 2.2 E	44.03
REPUBLIC 0.8 ESE	44.03
MOUNT VERNON 0.2 E	43.87
ROCKVILLE 7.9 E	43.84
NEVADA 0.2 W	43.80
VICHY ROLLA NATL AP	43.71
LEBANON 0.6 N	43.51
EMERALD BEACH 5.5 E	43.49
NORWOOD 10.6 S - FSA	43.47
CASSVILLE 4.8 SSE	43.22
SPRINGFIELD WSO AP	43.19

Station	Amount
IBERIA	43.11
LOCKWOOD	42.99
CARTHAGE 3.8 SW	42.92
SPRINGFIELD 4.9 SE	42.92
MILLER	42.85
CRANE 0.3 SW	42.85
JOPLIN 24 N	42.78
LEBANON 6.3 N	42.73
APPLETON CITY	42.66
SPRINGFIELD 5.5 SSW	42.61
FORT SCOTT 9.3 NNE	42.58
CRANE 0.7 SSW	42.55
GREENFIELD 2.9 WSW	42.51
KIMBERLING CITY 1.5 WNW	42.51
VERSAILLES	42.50
LAMAR 7N	42.40
POMME DE TERRE DAM	42.40





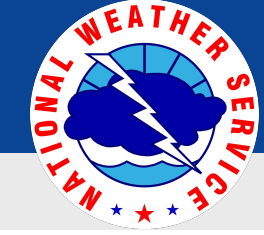
# Annual Climate Summary

## 2024 - Precipitation Report

Station	Amount
SHELL KNOB 5.6 ESE	42.35
LAMAR 0.3 ESE	42.28
SAVONBURG 4.1 ESE	42.23
VERSAILLES 2.7 E	42.14
GALENA	42.03
CAPE FAIR 2.1 N	41.81
NEVADA 3.4 NE	41.63
HOUSTON 4.5 ESE	41.54
PIERCE CITY 5.0 NE	41.51
GREENFIELD 2SE	41.49
MYRTLE 2.5 WNW	41.43
ANDERSON 7.5 WSW	41.27
GIRARD	41.06
CASSVILLE 1 NE	41.03
WARSAW 3.8 NNE	40.95
ANDERSON 3W	40.91
URBANA 2.7 NNE	40.88

Station	Amount
FORT SCOTT 0.6 SW	40.75
ANDERSON 4.2 W	40.65
STELLA 2.8 SW	40.62
COLE CAMP 3NW	40.62
STOVER 2.3 NW	40.51
AURORA 2.7 S	40.48
CARTHAGE 4.5 E	40.42
ANDERSON 6.8 W	40.37
STARK CITY 5.5 ENE	40.32
SHOAL CREEK ESTATES 0.2	40.16
MONETT 4SW	40.00
OSCEOLA 0.3 SW	39.98
PURDY 4.8 SSW	39.83
SELIGMAN 3.0 N	39.80
MARIONVILLE 4.7 N	39.80
NEVADA 6.3 ESE	39.75
FARLINGTON 0.8 NNE	39.51

Station	Amount
ROLLA 5.6 S	39.41
NEOSHO 3.9 WNW	39.03
CASSVILLE 0.5 SW	38.75
LINCOLN 0.4 NNE	38.49
OSCEOLA	38.19
ROCKY COMFORT 0.8 S	37.88
GIRARD 4.6 W	37.38
GIRARD 10.6 W	37.11
COLE CAMP 0.4 SE	36.98
PITTSBURG 1.0 ESE	36.95
JOPLIN REGIONAL AIRPORT	36.68
DIAMOND 2W	36.55
HERMITAGE 0.5 ESE	36.55
GRAVOIS MILLS 8.4 S	36.52
TRUMAN DAM & RESERVOIR	35.94
NEOSHO	35.76
MONETT 1.8 N	35.38



# Monthly and Annual Climate Summary

## Report Information and Data Sources

- *Some missing data may at times occur in these preliminary reports when there are outages on the observing systems.*
- *These monthly and yearly reports are preliminary reports and have not been certified.*
- *Certified copies can be ordered for legal use by going to <https://ncei.noaa.gov/cdo-web/>*
- *The maps of the departures from normal on precipitation and temperature are obtained from the Midwestern Regional Climate Center.*
- *Data records for Springfield go from January 1st of 1888 through current.*
- *Data records for Joplin go from January 1st of 1902 through current.*
- *Data records for West Plains go from July 1 of 1948 through September 27th of 1996 and for the ASOS from September 28th of 1996 through current.*
- *Data records for Vichy go from May 1 of 1897 through current.*