

**NOAA Technical Memorandum NWS WR-211**



---

**A NORTHERN UTAH SOAKER!**

**Mark E. Struthwolf  
U.S. Army  
TECOM Dugway Met Team  
Dugway Proving Ground, Utah**

**February 1991**

---

**U.S. DEPARTMENT OF  
COMMERCE**

National Oceanic and  
Atmospheric Administration

National Weather  
Service



NOAA TECHNICAL MEMORANDA  
National Weather Service, Western Region Subseries

The National Weather Service (NWS) Western Region (WR) Subseries provides an informal medium for the documentation and quick dissemination of results not appropriate, or not yet ready, for formal publication. The series is used to report on work in progress, to describe technical procedures and practices, or to relate progress to a limited audience. These Technical Memoranda will report on investigations devoted primarily to regional and local problems of interest mainly to personnel, and hence will not be widely distributed.

Papers 1 to 25 are in the former series, ESSA Technical Memoranda, Western Region Technical Memoranda (WRTM); papers 24 to 59 are in the former series, ESSA Technical Memoranda, Weather Bureau Technical Memoranda (WBTM). Beginning with 60, the papers are part of the series, NOAA Technical Memoranda NWS. Out-of-print memoranda are not listed.

Papers 2 to 22, except for 5 (revised edition), are available from the National Weather Service Western Region, Scientific Services Division, P.O. Box 11188, Federal Building, 125 South State Street, Salt Lake City, Utah 84147. Paper 5 (revised edition), and all others beginning with 25 are available from the National Technical Information Service, U.S. Department of Commerce, Sills Building, 6285 Port Royal Road, Springfield, Virginia 22161. Prices vary for all paper copies; microfiche are \$3.50. Order by accession number shown in parentheses at end of each entry.

ESSA Technical Memoranda (WRTM)

- 2 Climatological Precipitation Probabilities. Compiled by Lucianne Miller, December 1965.
- 3 Western Region Pre- and Post-FP-3 Program, December 1, 1965, to February 20, 1966. Edward D. Diemer, March 1966.
- 5 Station Descriptions of Local Effects on Synoptic Weather Patterns. Philip Williams, Jr., April 1966 (Revised November 1967, October 1969). (PB-17800)
- 8 Interpreting the RAREP. Herbert P. Benner, May 1966 (Revised January 1967).
- 11 Some Electrical Processes in the Atmosphere. J. Latham, June 1966.
- 17 A Digitalized Summary of Radar Echoes within 100 Miles of Sacramento, California. J. A. Youngberg and L. B. Overas, December 1966.
- 21 An Objective Aid for Forecasting the End of East Winds in the Columbia Gorge, July through October. D. John Copararis, April 1967.
- 22 Derivation of Radar Horizons in Mountainous Terrain. Roger G. Pappas, April 1967.

ESSA Technical Memoranda, Weather Bureau Technical Memoranda (WBTM)

- 25 Verification of Operation Probability of Precipitation Forecasts, April 1966-March 1967. W. W. Dickey, October 1967. (PB-176240)
- 26 A Study of Winds in the Lake Mead Recreation Area. R. P. Augulis, January 1968. (PB-177830)
- 28 Weather Extremes. R. J. Schmidli, April 1968 (Revised March 1986). (PB86 177672/AS)
- 29 Small-Scale Analysis and Prediction. Philip Williams, Jr., May 1968. (PB178425)
- 30 Numerical Weather Prediction and Synoptic Meteorology. CPT Thomas D. Murphy, USAF, May 1968. (AD 673366)
- 31 Precipitation Detection Probabilities by Salt Lake ARTC Radars. Robert K. Belesky, July 1968. (PB 179084)
- 32 Probability Forecasting--A Problem Analysis with Reference to the Portland Fire Weather District. Harold S. Ayer, July 1968. (PB 179289)
- 36 Temperature Trends in Sacramento--Another Heat Island. Anthony D. Lentini, February 1969. (PB 183055)
- 37 Disposal of Logging Residues Without Damage to Air Quality. Owen P. Cramer, March 1969. (PB 183057)
- 39 Upper-Air Lows Over Northwestern United States. A.L. Jacobson, April 1969. (PB 184296)
- 40 The Man-Machine Mix in Applied Weather Forecasting in the 1970s. L.W. Snellman, August 1969. (PB 185088)
- 43 Forecasting Maximum Temperatures at Helena, Montana. David E. Olsen, October 1969. (PB 185762)
- 44 Estimated Return Periods for Short-Duration Precipitation in Arizona. Paul C. Kangieser, October 1969. (PB 187763)
- 46 Applications of the Net Radiometer to Short-Range Fog and Stratus Forecasting at Eugene, Oregon. L. Yee and E. Bates, December 1969. (PB 190476)
- 47 Statistical Analysis as a Flood Routing Tool. Robert J.C. Burnash, December 1969. (PB 188744)
- 48 Tsunami. Richard P. Augulis, February 1970. (PB 190157)
- 49 Predicting Precipitation Type. Robert J.C. Burnash and Floyd E. Hug, March 1970. (PB 190962)
- 50 Statistical Report on Aeroallergens (Pollens and Molds) Fort Huachuca, Arizona, 1969. Wayne S. Johnson, April 1970. (PB 191743)
- 51 Western Region Sea State and Surf Forecaster's Manual. Gordon C. Shields and Gerald B. Burdwell, July 1970. (PB 193102)
- 52 Sacramento Weather Radar Climatology. R.G. Pappas and C. M. Veliquette, July 1970. (PB 193347)
- 54 A Refinement of the Vorticity Field to Delineate Areas of Significant Precipitation. Barry B. Aronovitch, August 1970.
- 55 Application of the SSARR Model to a Basin without Discharge Record. Vail Schermerhorn and Donal W. Kuehl, August 1970. (PB 194394)
- 56 Areal Coverage of Precipitation in Northwestern Utah. Philip Williams, Jr., and Werner J. Heck, September 1970. (PB 194389)
- 57 Preliminary Report on Agricultural Field Burning vs. Atmospheric Visibility in the Willamette Valley of Oregon. Earl M. Bates and David O. Chilcote, September 1970. (PB 194710)
- 58 Air Pollution by Jet Aircraft at Seattle-Tacoma Airport. Wallace R. Donaldson, October 1970. (COM 71 00017)
- 59 Application of PB Model Forecast Parameters to Local-Area Forecasting. Leonard W. Snellman, October 1970. (COM 71 00016)
- 60 An Aid for Forecasting the Minimum Temperature at Medford, Oregon, Arthur W. Fritz, October 1970. (COM 71 00120)
- 63 700-mb Warm Air Advection as a Forecasting Tool for Montana and Northern Idaho. Norris E. Woerner, February 1971. (COM 71 00349)
- 64 Wind and Weather Regimes at Great Falls, Montana. Warren B. Price, March 1971.
- 65 Climate of Sacramento, California. Tony Martini, April 1990. (Fifth Revision) (PB89 207781/AS)
- 66 A Preliminary Report on Correlation of ARTCC Radar Echoes and Precipitation. Wilbur K. Hall, June 1971. (COM 71 00829)
- 69 National Weather Service Support to Soaring Activities. Ellis Burton, August 1971. (COM 71 00956)
- 71 Western Region Synoptic Analysis-Problems and Methods. Philip Williams, Jr., February 1972. (COM 72 10433)
- 74 Thunderstorms and Hail Days Probabilities in Nevada. Clarence M. Sakamoto, April 1972. (COM 72 10554)

- 75 A Study of the Low Level Jet Stream of the San Joaquin Valley. Ronald A. Willis and Philip Williams, Jr., May 1972. (COM 72 10707)
- 76 Monthly Climatological Charts of the Behavior of Fog and Low Stratus at Los Angeles International Airport. Donald M. Gales, July 1972. (COM 72 11140)
- 77 A Study of Radar Echo Distribution in Arizona During July and August. John E. Hales, Jr., July 1972. (COM 72 11136)
- 78 Forecasting Precipitation at Bakersfield, California, Using Pressure Gradient Vectors. Earl T. Riddough, July 1972. (COM 72 11146)
- 79 Climate of Stockton, California. Robert C. Nelson, July 1972. (COM 72 10920)
- 80 Estimation of Number of Days Above or Below Selected Temperatures. Clarence M. Sakamoto, October 1972. (COM 72 10021)
- 81 An Aid for Forecasting Summer Maximum Temperatures at Seattle, Washington. Edgar G. Johnson, November 1972. (COM 73 10150)
- 82 Flash Flood Forecasting and Warning Program in the Western Region. Philip Williams, Jr., Chester L. Glenn, and Roland L. Raetz, December 1972, (Revised March 1978). (COM 73 10251)
- 83 A comparison of Manual and Semiautomatic Methods of Digitizing Analog Wind Records. Glenn E. Rasch, March 1973. (COM 73 10669)
- 86 Conditional Probabilities for Sequences of Wet Days at Phoenix, Arizona. Paul C. Kangieser, June 1973. (COM 73 11264)
- 87 A Refinement of the Use of K-Values in Forecasting Thunderstorms in Washington and Oregon. Robert Y.G. Lee, June 1973. (COM 73 11276)
- 89 Objective Forecast Precipitation Over the Western Region of the United States. Julia N. Paegle and Larry P. Kierulff, September 1973. (COM 73 11946/3AS)
- 91 Arizona "Eddy" Tornadoes. Robert S. Ingram, October 1973. (COM 73 10465)
- 92 Smoke Management in the Willamette Valley. Earl M. Bates, May 1974. (COM 74 11277/AS)
- 93 An Operational Evaluation of 500-mb Type Regression Equations. Alexander E. MacDonald, June 1974. (COM 74 11407/AS)
- 94 Conditional Probability of Visibility Less than One-Half Mile in Radiation Fog at Fresno, California. John D. Thomas, August 1974. (COM 74 11555/AS)
- 95 Climate of Flagstaff, Arizona. Paul W. Sorenson, and updated by Reginald W. Preston, January 1987. (PB87 143160/AS)
- 96 Map type Precipitation Probabilities for the Western Region. Glenn E. Rasch and Alexander E. MacDonald, February 1975. (COM 75 10428/AS)
- 97 Eastern Pacific Cut-Off Low of April 21-28, 1974. William J. Alder and George R. Miller, January 1976. (PB 250 711/AS)
- 98 Study on a Significant Precipitation Episode in Western United States. Ira S. Brenner, April 1976. (COM 75 10719/AS)
- 99 A Study of Flash Flood Susceptibility-A Basin in Southern Arizona. Gerald Williams, August 1975. (COM 75 11360/AS)
- 102 A Set of Rules for Forecasting Temperatures in Napa and Sonoma Counties. Wesley L. Tuft, October 1975. (PB 246 902/AS)
- 103 Application of the National Weather Service Flash-Flood Program in the Western Region. Gerald Williams, January 1976. (PB 253 053/AS)
- 104 Objective Aids for Forecasting Minimum Temperatures at Reno, Nevada, During the Summer Months. Christopher D. Hill, January 1976. (PB 252 866/AS)
- 105 Forecasting the Mono Wind. Charles P. Ruscha, Jr., February 1976. (PB 254 650)
- 106 Use of MOS Forecast Parameters in Temperature Forecasting. John C. Plankinton, Jr., March 1976. (PB 254 649)
- 107 Map Types as Aids in Using MOS PoPs in Western United States. Ira S. Brenner, August 1976. (PB 259 594)
- 108 Other Kinds of Wind Shear. Christopher D. Hill, August 1976. (PB 260 437/AS)
- 109 Forecasting North Winds in the Upper Sacramento Valley and Adjoining Forests. Christopher E. Fontana, September 1976. (PB 273 677/AS)
- 110 Cool Inflow as a Weakening Influence on Eastern Pacific Tropical Cyclones. William J. Denney, November 1976. (PB 264 655/AS)
- 112 The MAN/MOS Program. Alexander E. MacDonald, February 1977. (PB 265 941/AS)
- 113 Winter Season Minimum Temperature Formula for Bakersfield, California, Using Multiple Regression. Michael J. Oard, February 1977. (PB 273 694/AS)
- 114 Tropical Cyclone Kathleen. James R. Fors, February 1977. (PB 273 676/AS)
- 116 A Study of Wind Gusts on Lake Mead. Bradley Colman, April 1977. (PB 268 847)
- 117 The Relative Frequency of Cumulonimbus Clouds at the Nevada Test Site as a Function of K-Value. R.F. Quiring, April 1977. (PB 272 831)
- 118 Moisture Distribution Modification by Upward Vertical Motion. Ira S. Brenner, April 1977. (PB 268 740)
- 119 Relative Frequency of Occurrence of Warm Season Echo Activity as a Function of Stability Indices Computed from the Yucca Flat, Nevada, Rawinsonde. Darryl Randerson, June 1977. (PB 271 290/AS)
- 121 Climatological Prediction of Cumulonimbus Clouds in the Vicinity of the Yucca Flat Weather Station. R.F. Quiring, June 1977. (PB 271 704/AS)
- 122 A Method for Transforming Temperature Distribution to Normality. Morris S. Webb, Jr., June 1977. (PB 271 742/AS)
- 124 Statistical Guidance for Prediction of Eastern North Pacific Tropical Cyclone Motion - Part I. Charles J. Neumann and Preston W. Leftwich, August 1977. (PB 272 661)
- 125 Statistical Guidance on the Prediction of Eastern North Pacific Tropical Cyclone Motion - Part II. Preston W. Leftwich and Charles J. Neumann, August 1977. (PB 273 155/AS)
- 126 Climate of San Francisco. E. Jan Null, February 1978. Revised by George T. Pericht, April 1988. (PB88 208624/AS)
- 127 Development of a Probability Equation for Winter-Type Precipitation Patterns in Great Falls, Montana. Kenneth B. Mielke, February 1978. (PB 281 387/AS)
- 128 Hand Calculator Program to Compute Parcel Thermal Dynamics. Dan Gudge, April 1978. (PB 283 080/AS)
- 129 Fire whirls. David W. Goens, May 1978. (PB 283 866/AS)
- 130 Flash-Flood Procedure. Ralph C. Hatch and Gerald Williams, May 1978. (PB 286 014/AS)
- 131 Automated Fire-Weather Forecasts. Mark A. Molner and David E. Olsen, September 1978. (PB 289 916/AS)
- 132 Estimates of the Effects of Terrain Blocking on the Los Angeles WSR-74C Weather Radar. R.G. Pappas, R.Y. Lee, B.W. Finke, October 1978. (PB 289767/AS)
- 133 Spectral Techniques in Ocean Wave Forecasting. John A. Jannuzzi, October 1978. (PB291317/AS)
- 134 Solar Radiation. John A. Jannuzzi, November 1978. (PB291195/AS)
- 135 Application of a Spectrum Analyzer in Forecasting Ocean Swell in Southern California Coastal Waters. Lawrence P. Kierulff, January 1979. (PB292716/AS)
- 136 Basic Hydrologic Principles. Thomas L. Dietrich, January 1979. (PB292247/AS)
- 137 LFM 24-Hour Prediction of Eastern Pacific Cyclones Refined by Satellite Images. John R. Zimmerman and Charles P. Ruscha, Jr., January 1979. (PB294324/AS)
- 138 A Simple Analysis/Diagnosis System for Real Time Evaluation of Vertical Motion. Scott Heflick and James R. Fors, February 1979. (PB294216/AS)
- 139 Aids for Forecasting Minimum Temperature in the Wenatchee Frost District. Robert S. Robinson, April 1979. (PB298339/AS)
- 140 Influence of Cloudiness on Summertime Temperatures in the Eastern, Washington Fire Weather district. James Holcomb, April 1979. (PB298674/AS)
- 141 Comparison of LFM and MFM Precipitation Guidance for Nevada During Doreen. Christopher Hill, April 1979. (PB298613/AS)

**NOAA Technical Memorandum NWS WR-211**

**A NORTHERN UTAH SOAKER!**

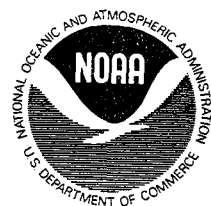
**Mark E. Struthwolf**  
**U. S. Army**  
**TECOM Dugway Met Team**  
**Dugway Proving Ground, Utah**

**February 1991**

UNITED STATES  
DEPARTMENT OF COMMERCE  
*Robert A. Mosbacher, Secretary*

National Oceanic and  
Atmospheric Administration  
*John A. Knauss, Under Secretary  
and Administrator*

National Weather Service  
*Elbert W. Friday, Jr., Assistant  
Administrator for Weather Services*



This publication has been reviewed  
and is approved for publication by  
Scientific Services Division,  
Western Region



Kenneth B. Mielke, Chief  
Scientific Services Division  
Salt Lake City, Utah

## TABLE OF CONTENTS

---

I.	INTRODUCTION .....	1
II.	STORM SYNOPSIS .....	1
III.	SATELLITE DISCUSSION .....	3
IV.	SUMMARY AND CONCLUSIONS .....	4
V.	ACKNOWLEDGMENTS .....	6
VI.	REFERENCES .....	6

## TABLE OF FIGURES

---

- Figure 1 500 MB Analysis
- Figure 2 300 MB Analysis
- Figure 3 NGM 500 MB Analysis and Forecasts of Heights/Vorticity
- Figure 4 NGM 700 MB Analysis and Forecasts of Height and Relative Humidity
- Figure 5 NGM Forecast and Analysis of MSL Pres/Thkns
- Figure 6 Observed 24-Hour Rainfall - Mean RH & Soundings for Winnemucca and Boise
- Figure 7 Combined Surface Analysis for 12Z and 18Z, October 25, 1989
- Figure 8 NGM Output for Salt Lake City From 12Z October 24 and 25, 1989 Runs
- Figure 9 Water Vapor Imagery, 1301Z, October 25, 1989
- Figure 10 Water Vapor Imagery, 1601Z, October 25, 1989
- Figure 11 Water Vapor Imagery, 1901Z, October 25, 1989
- Figure 12 Water Vapor Imagery, 0101Z, October 26, 1989
- Figure 13 Infrared Imagery, 1301Z, October 25, 1989
- Figure 14 Infrared Imagery, 1601Z, October 25, 1989
- Figure 15 Infrared Imagery, 1801Z, October 25, 1989
- Figure 16 Infrared Imagery, 2201Z, October 25, 1989
- Figure 17 Rainfall Totals for October 25-26, 1989.

# A Northern Utah Soaker!

## I. INTRODUCTION

A cold short-wave feature that had been poised over the eastern Pacific for several days moved eastward to the coast of northern California and southern Oregon on October 24, 1989, and into the western Great Basin by 12Z on October 25. Although locally heavy rains resulted from thunderstorms in northern California, rain amounts elsewhere were generally meager, ranging from 0.15 inches in southern Idaho to 0.50 inches locally in central Nevada. However, when this system moved into the eastern Great Basin, the storm underwent cyclogenesis and produced moderate to heavy rains along with embedded thunderstorms. The heaviest rain occurred from central Utah to extreme southern Idaho, where rain amounts generally were 0.75 to 1.50 inches, with over 2.00 inches reported locally. This rain event was clearly underforecast by the NGM; the 24-hour quantitative precipitation forecast (QPF) predicted 0.18 inches at Salt Lake City. Why did cyclogenesis occur over this part of the Great Basin, why was the QPF so low in face of apparent strong dynamics, and could cyclogenesis and a better QPF have been forecast from a subjective point of view? This paper will examine these questions in some detail.

## II. STORM SYNOPSIS

During the last week of October 1989, a ridge dominated the eastern half of North America while the long-wave trough resided over the western half of the continent and the eastern Pacific (east of  $150^{\circ}$  W). On October 24, a 500 mb short-wave trough with a closed circulation of its own, but still within the flow of the westerlies, moved east to just off the southern Oregon coast (Fig. 1a). This system continued moving due east, reaching extreme south central Oregon by

12Z on October 25 (Fig. 1b). Within this system were unseasonably cold 500 mb temperatures, with  $-28^{\circ}\text{C}$  reported at Medford and  $-26^{\circ}\text{C}$  at Oakland (Fig. 1b). Between 12Z on October 25 and 00Z on October 26, the short-wave trough moved southeastward into central Nevada in response to the decreasing wavelength between it and an upstream short-wave trough over the Gulf of Alaska that dropped into the western portion of the overall long-wave trough position (Fig. 1c). Although this paper focuses on the short-wave trough entering the Great Basin, it should be kept in mind that this trough was being influenced by the upstream trough. The 24-hour 500 mb height change chart clearly identifies this wavetrain propagation by the large rise/fall couplet valid at 00Z on October 25 (Fig. 1d). Note that very minimal height changes are shown over the eastern half of the country, indicating that the ridge position was holding firmly over the Mississippi Valley.

The 300 mb analysis for 12Z on October 25 identifies at least two distinct jet streaks greater than 90 kt associated with the closed circulation short-wave trough over northern California: (1) one moving southward on the west side of the trough and (2) a possible couplet of jet maxima rounding the base and heading northeastward (Fig. 2a). The separate jet maximum on the west side of the trough was of importance because it suggested that the trough could potentially deepen before being accelerated northeastward by the upstream trough. Figure 2b, valid at 00Z on October 26, indicates that the 300 mb center did, in fact, deepen and move into north central Nevada. For the following 12 hours, winds greater than 70 kt remained on the west-southwest side of the trough, while the jet segment on the

east side of the trough weakened. The net result was a transition from a slightly positively-tilted trough at 300 mb at 00Z on October 26 to a slightly negatively-tilted trough by 12Z on October 26 (Fig. 2c). The other jet segment or possible jet couplet is discussed below in the satellite interpretation section of this paper.

In spite of 12- to 24-hour forecasts of strong dynamics at 500 mb (Figs. 3c and 3d)(i.e, a vorticity maximum of at least  $22 \times 10^{-5} \text{ s}^{-1}$  rotating through a slightly negatively-tilted trough) and the favorable jet configurations at 300 mb, the NGM failed to develop cyclogenesis over Nevada. At 12Z on October 25 the 500 mb wind at Mercury, NV was about 215 degrees at greater than 50 kt, a sign that conditions were becoming favorable for cyclogenesis downwind of the Sierra-Nevada mountain range. This formation typically occurs along a frontal boundary that extends northeastward, parallel to the 500 mb flow, as was seen here on the 12Z surface chart for October 25 (Fig. 7). Note how the October 25 18Z analysis (Fig. 7) differs significantly from the 24-hour forecast valid 00Z on October 26 (Fig. 5a). The 12-hour forecast improves with a secondary low over northern Utah, but it's forecast to be too far east and not strong enough (Fig. 5b). The importance of this cyclogenesis is that it significantly strengthens the baroclinic zone at the surface by retarding the eastward progression of the pre-existing frontal boundary north of the point of formation. Since the NGM did not indicate strong Nevada cyclogenesis and subsequent low pressure development at the surface, the upward vertical velocities due to secondary circulations (i.e., advective vorticity changes and divergence) were not incorporated into the forecast. The poor forecast of strong upward vertical motions characteristically associated with rapid cyclogenesis appears to be the main reason why the QPF for Salt Lake City was so low, a meager 0.18

inches. However, other factors such as moisture availability within this storm and an understanding of the computations behind the analyses and forecasted NGM relative humidity (RH) fields need to be examined before a full conclusion can be made.

In the post-processed output of the NGM, the mean relative humidity is defined by the weighted mean of the relative humidities in the bottom nine layers of the model (from the earth's surface up to 472 mb when the surface pressure is 1000 mb), where the relative thickness of the layers is used as the weighting function (Hoke et al, 1989). Since the layers are nearly twice as thick near 500 mb than at the surface, it follows that the upper layers carry twice as much weight as the lower layers. It has been generally accepted that this method does not capture the true moisture content of the atmosphere in the NGM's 700 mb height and relative humidity panel. Consequently, it typically takes the NGM 12 to 24 hours through an inherent "spin up" to generate a more reliable RH forecast. To discard the possibility that the NGM precipitation forecast in this storm was meager due to the so-called "spin up" delay, the 24- to 48-hour QPF generated 24 hours earlier at 12Z on October 24 was examined (Fig. 8a). Note that only 0.05 inches was forecast between 24 and 48 hours. It is apparent then that "spin up" delays were not the main reason for a low QPF.

Knowing that the NGM does not have a reliable RH analysis, it follows that a better tool for obtaining the initial moisture content of the atmosphere is the "average relative humidity (sfc to 500 mb)" depiction (Fig. 6b). Note that there is an analyzed  $>90\%$  RH contour that is not featured on the NGM analysis (Fig. 4a). The soundings from Winnemucca and Boise (Figs. 6c and 6d) support this very moist atmosphere of  $>90\%$  RH. Figure 4a also shows that the NGM's RH  $>70\%$



area was much less extensive than the actual area. During the following 12 hours, the NGM enlarged the RH >70% area by expanding it southeastward into western Utah and northward into western Montana (Fig. 4b). An area of >90% was introduced, but it was located in central Idaho and not in Nevada where one might expect it to develop due to cyclogenesis. However, the 24-hour forecast valid at 12Z on October 26 appears to hint at some kind of development in the eastern Great Basin by introducing a small pocket of RH >90% between Salt Lake City and Wyoming (Fig. 4c). Figure 8b indicates that this RH >90% area of the R2 level moved over Salt Lake City between the 12- and 24-hour forecasts respectively, valid at 00Z and 12Z on October 26. This forecast feature is subtle, yet important. Given the fact that the NGM was forecasting relative humidities >90% and a QPF of 0.18 inches through 24 hours (Fig. 8b) without clearly identifying cyclogenesis as occurring over Nevada, the operational forecaster should have asked what the RH and resulting QPF would be with cyclogenesis.

A reasonable response to the above question would be to adjust the precipitation forecasts upward for Salt Lake City. One method to determine how much of an adjustment to make in the precipitation forecast might be to look at the amount of precipitation that occurred during the previous 24 hours across the western Great Basin and California (Fig. 6a). Rain amounts generally were less than 0.50 inches, although there were exceptions. For example, in California, Redding and Red Bluff reported 1.41 and 3.36 inches, respectively. These impressive amounts revealed how much moisture was potentially available, especially in the convectively unstable regions of the cold 500 mb low and the vicinity of the vorticity maximum. Considering that cyclogenesis was likely to occur over the Great Basin between 12Z on October 25

and 12Z on October 26, a forecast for much heavier precipitation (in the neighborhood of 0.50 to 1.00 inch for eastern Nevada and Northern Utah) might have been a good first guess. Determination of time and place of anticipated heavy rain could have been aided by a continuous examination of the satellite images as the day progressed.

### III. SATELLITE DISCUSSION

The use of satellite images was probably the most important tool in tracking the storm system as it moved into the Great Basin. The 6.7- $\mu$ m water vapor imagery for 13Z on October 25 (Fig. 9) shows a clearly-defined, elliptical dark area extending from coastal California to roughly 34°N and 125°W. The dark area behind the baroclinic cloud band (a result of sinking motion) is a first clue of deepening or cyclogenesis (Smigielski and Ellrod, 1986). By 16Z, (Fig. 10), the darkening and broadening of the initial dark band over southern California continued, which was reflective of the mid-level drying caused by subsidence. This expanse of the dry slot is also a strong indicator of cyclogenesis frequently observed by Smigielski and Ellrod (1986). By 19Z (Fig. 11), an apparent mid-level moisture band developed just ahead of the dark band near Las Vegas, NV. It then spread northward, reaching to higher levels over the next 6 hours as indicated by the increasing brightness on the water vapor imagery for 01Z on October 26 (Fig. 12).

This moisture organization was in response to the rising/sinking couplet of the thermally indirect circulation associated with the exit region of the jet (Weldon, 1983). A close examination of the 300 mb chart for 12Z on October 25 (Fig. 2a) indicates that there were possibly two jet segments in the jet streak located between the base of the trough and Montana. I have assumed that the downstream segment was the region from

Ely, NV to central Montana and the upstream segment was from Edwards AFB, CA southwest to the base of the trough. This delineation is based on the slightly lower wind speed of 85 kt at Mercury, NV. The downstream segment has the characteristics of a "channeled" jet in that the 500 and 300 mb jet maxima and the vorticity lobe axis (not necessarily the vorticity isopleths) are typically parallel to the height contours, streamlines, 1000-500 mb thickness isopleths, and isotherms (Weldon, 1979). Their existence establishes the well-defined back edge of a cirrus shield, as is clearly identifiable on Figure 13. On the other hand, the upstream jet segment has the characteristics of an "advection" jet in that the vorticity lobe axis is not parallel to the winds, but instead crosses the streamlines and height contours at significant angles (Weldon, 1979). This lobe of vorticity axis was analyzed at 12Z on October 25 (Fig. 3a) and was forecast to intensify by 00Z on October 26 (Fig. 3b). This strong positive vorticity advection (PVA) resulted in cyclogenesis and hence the rapid cloud development across southern Nevada near Las Vegas (Figs. 14 and 15). The combination of the PVA aloft and the surface frontogenesis produced strong upward vertical motions, allowing thunderstorms to blossom rapidly between 18 and 21Z. Surface observations from southern Nevada and Cedar City, UT reflected these developments with rapid pressure falls and reports of cumulonimbus and thunder. By 22Z on October 25 (Fig. 16), a comma cloud signature had developed over southwest Utah and the adjacent region of Nevada, indicating that the cyclogenesis process was possibly developing a secondary low near Caliente, NV (P38 on Fig. 7). The explosive nature of this system was an indicator that it was going to be the focal point for the weather imminent in central and northern Utah. This storm system reached maturity between 03Z and 06Z on October 26, with a well defined comma cloud signature and a dry tongue

protruding northward along the Nevada-Utah border (not shown).

The storm produced much needed precipitation across the west central and northern third of Utah, with many areas receiving over 1.00 inch. Figure 17 summarizes the reported rainfall amounts for central and northern Utah. Most of the precipitation occurred between 22Z on October 25 and 06Z on October 26, although another period of precipitation occurred along the Wasatch Mountains between 09Z and 15Z on October 26 as the 700 mb flow became northwest. This second period of precipitation was likely mesoscale in nature, resulting from orographic lifting of the moist air mass with northwest winds.

#### IV. SUMMARY AND CONCLUSIONS

An overview of this storm suggests that several integral components all came together over the Great Basin on October 25 to produce a significant synoptic scale rain event. Although the NGM model indicated that this storm would have good dynamic support and the surface to 500 mb RH analysis indicated the availability of substantial moisture, the NGM failed to produce a high enough QPF, even after a 12-hour "spin up" time. The forecaster's dilemma was to determine which parameters were being forecast most accurately. Among the important questions to be considered by the forecaster were: Would cyclogenesis occur over Nevada? If plenty of moisture was available, how much of an adjustment to the QPF should be made to account for cyclogenesis acting on the moist atmosphere?

A first glance at the 500 and 300 mb levels indicates that the most important dynamic features were strong PVA embedded in southwest flow across the Sierra-Nevada mountain range. This combination of PVA embedded within southwest winds resulted in rapid

cyclogenesis over southern Nevada that later moved northeast along the pre-existing frontal boundary across west central and northern Utah. Other important features included the cold 500 mb temperatures and the abundance of maritime moisture within the original short-wave trough. In addition to these more obvious features, there were two subtle features that played important roles in maintaining the overall storm strength and possible development. The first was the upstream short-wave trough over the Gulf of Alaska. As it moved down the backside of the long-wave trough, it acted as a "kicker" to the primary system, not allowing it to stall over California. The second, was the 90 kt plus jet on the southwest flank of the primary short-wave trough at 12Z on October 25 that directed the core of the system farther south.

With a knowledge of the existing strong dynamics shown by the analysis for 12Z on October 25 and the potential dynamics thereafter, the forecaster's main concern was how much precipitation could be rung out of the atmosphere if cyclogenesis took place. Upstream rainfall amounts for the previous 24 hours were generally unimpressive, with less than 0.50 inches at most locations. However, there were reports of 1.41 and 3.36 inches at two different observation sites in northern California, which indicated the potential for heavy rainfall with this storm. This vital information and the extremely moist 12Z soundings from Winnemucca and Boise were significant indicators that the computer guidance was deficient in the QPF department even without considering the effects of cyclogenesis acting on the moist atmosphere. The NGM's failure to forecast cyclogenesis over Nevada was the crux of the entire forecast.

Satellite pictures not only aided in following the progress of the storm, they identified the location of the "advection" jet maximum and, therefore, the region in

which cyclogenesis was most likely to occur. Continued enhancement of the cloud signature over southern Nevada by 20Z on October 25 suggests that the location and strength of the vorticity maximum forecast by the NGM were on track. Strong thunderstorms developed under the favored left-front quadrant of the jet maximum as it sped across southern Nevada into southern Utah. This embedded convection spread northward along the cold front, which moved much more slowly across the northern half of Utah as the tilt of the trough became slightly negative. In doing so, the northern half of Utah remained in a favorable location for upward vertical motions for an extended period of time. As a result, the rain continued for 10 to 16 hours, producing widespread amounts of 0.75 to 1.50 inches. Also, up to 3 inches of snow accumulated in parts of the Salt Lake City Valley early on October 26 as the flow at 700 mb became northwest with the passage of the 700 mb low.

In conclusion, it is imperative from an operational forecaster's point of view that the computer models' guidance be used as exactly that-- "guidance". Constructive analyses of available data can help determine if the models have a good handle on the overall storm system, and this information can be combined with the guidance, experience, and intuition to generate a worthy forecast. As seen in this case study, there were many so-called "hand writings on the wall" at least 12 hours prior to the storm reaching Utah. These indicators, along with the Nevada cyclogenesis, all argued for a substantial rain event and should have been recognized as such. Therefore, when the NGM and/or LFM (which forecast similar 500 mb dynamics and a slightly higher QPF for this case) produce meager objective precipitation forecasts in the face of storm characteristics as described above, the forecaster's subjective intuition

should prevail over the computer QPF guidance.

## V. ACKNOWLEDGMENTS

The author appreciates the comments and reviews provided by Elizabeth Struthwolf, Jim Bowers (Chief of the Dugway Meteorology Division), Arnie Villarreal, (Chief of the Dugway Meteorological Team), and the National Weather Service Western Region Scientific Services Division.

## VI. REFERENCES

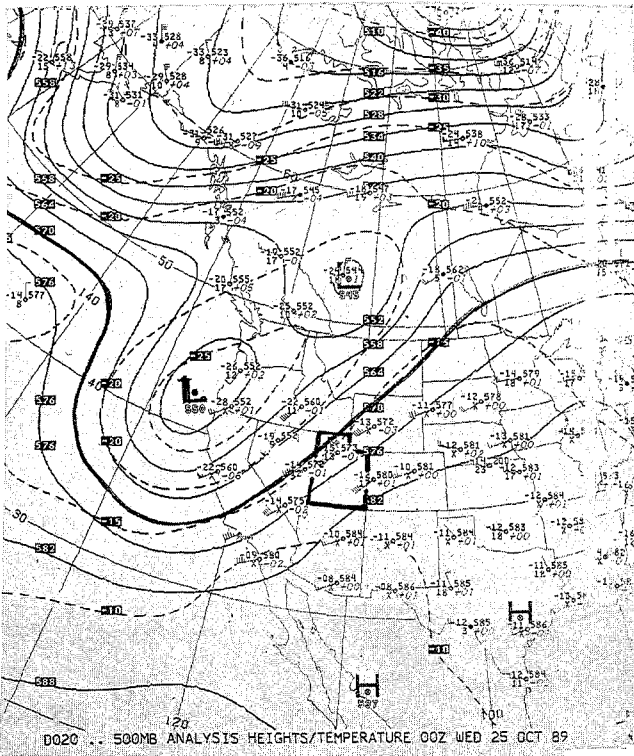
Hoke, J.E., N.A. Phillips, G.J. DiMego, J.J. Tuccillo and J.G. Sela, 1989: The Regional Analysis and Forecast System of the National Meteorological Center. *Weather and Forecasting*, Vol. 4, No. 3, pp 323-334.

Smigielski, F.J., and G.P. Ellrod, 1985: Surface Cyclogenesis as Indicated by Satellite Imagery. *Satellite Imagery Interpretation for Forecasters*, NOAA, *Weather Service Forecasting Handbook #6*, 1986; p 2-E-1.

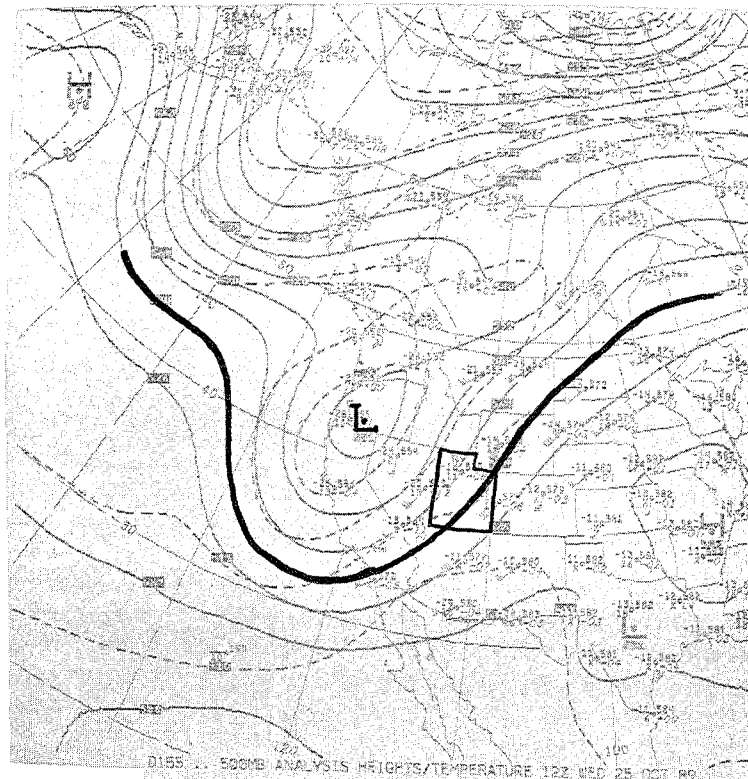
Weldon, R.B., 1979: Part IV Cloud Patterns and the Upper Air Wind Field. *Satellite Imagery Interpretation for Forecasters*, NOAA, *Weather Service Forecasting Handbook #6*, 1986; p 2-B-1.

Weldon, R.B., 1983: Synoptic Scale Cloud Systems. *Satellite Imagery Interpretation for Forecasters*, NOAA, *Weather Service Forecasting Handbook #6*, 1986; p 2-A-1.

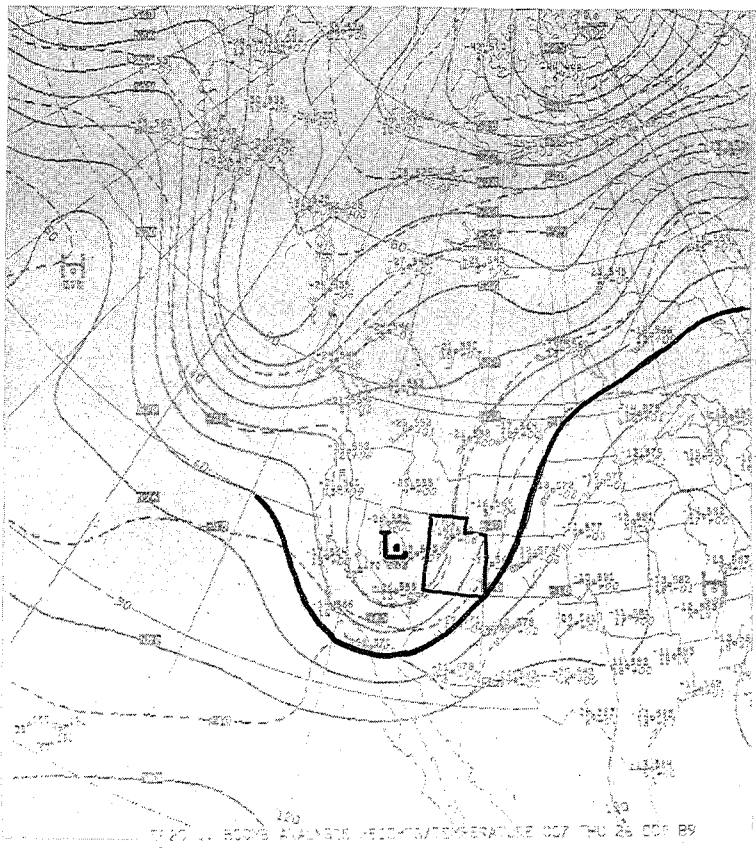
FIGURE 1



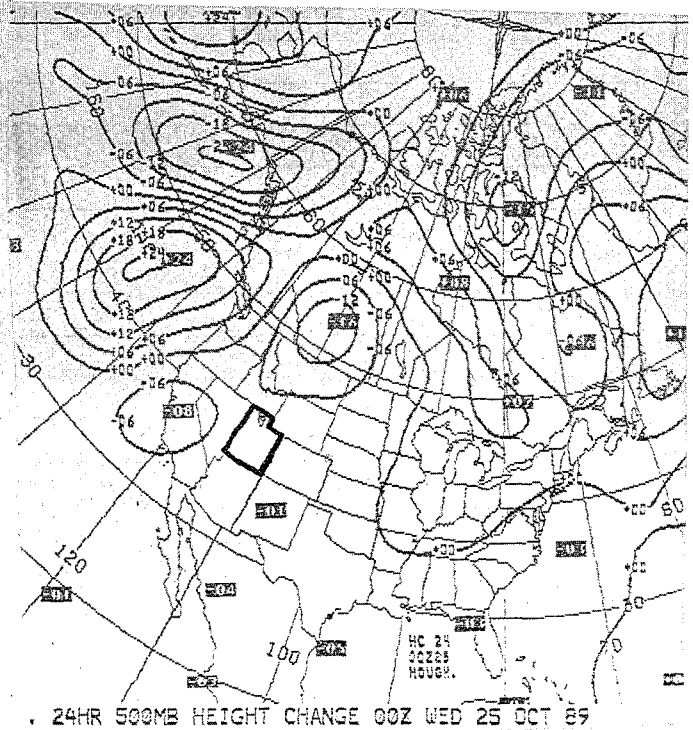
(a) 500 MB ANALYSIS 00Z OCTOBER 25



(b) 500 MB ANALYSIS 12Z OCTOBER 25

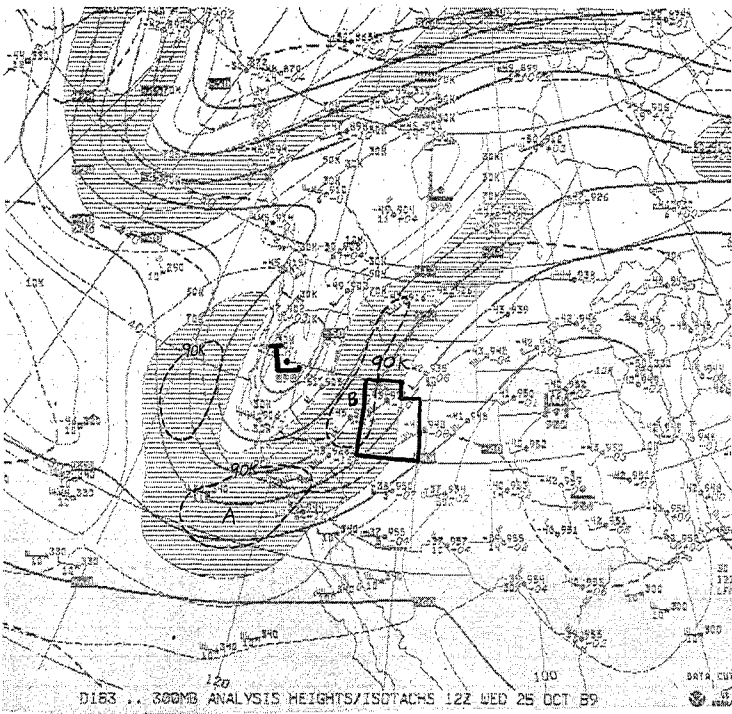


(c) 500 MB ANALYSIS 00Z OCTOBER 26

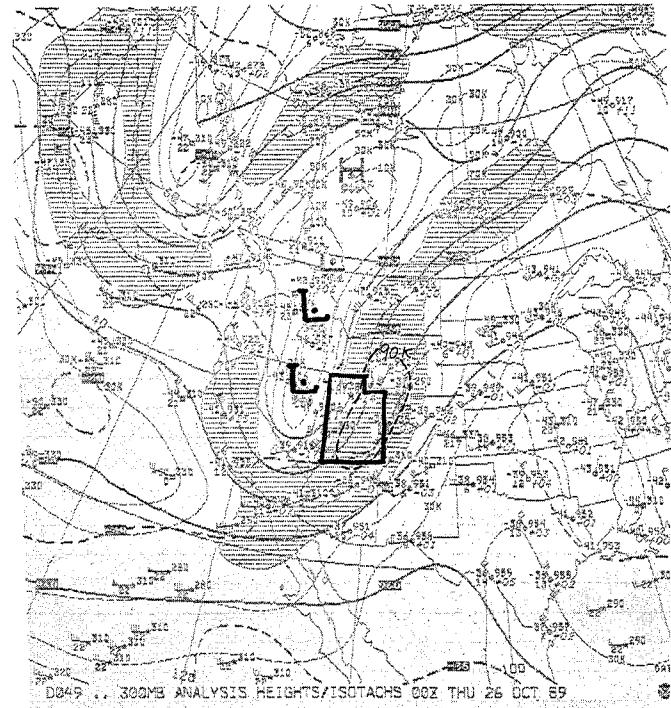


(d) 24 HR 500 MB HEIGHT CHANGE  
00Z OCTOBER 25

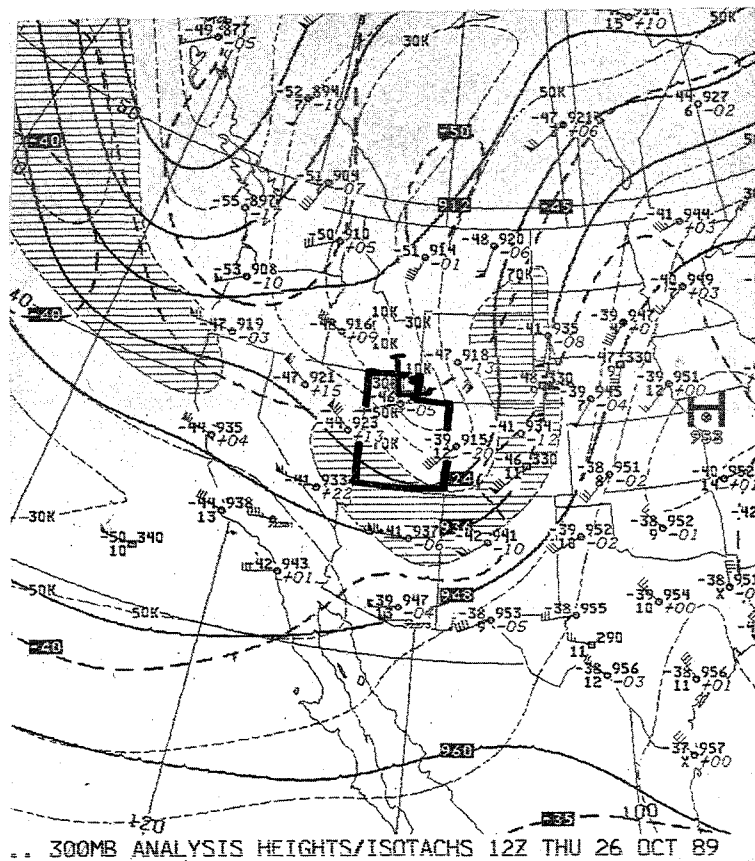
FIGURE 2



(a) 300 MB ANALYSIS 12Z OCTOBER 25  
Jet segment "A" is an "advection" jet.  
Jet segment "B" is a "channeled" jet.

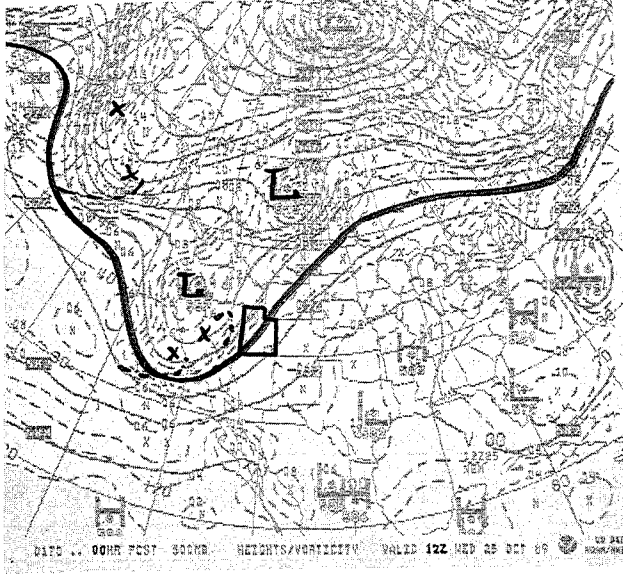


(b) 300 MB ANALYSIS 00Z OCTOBER 26

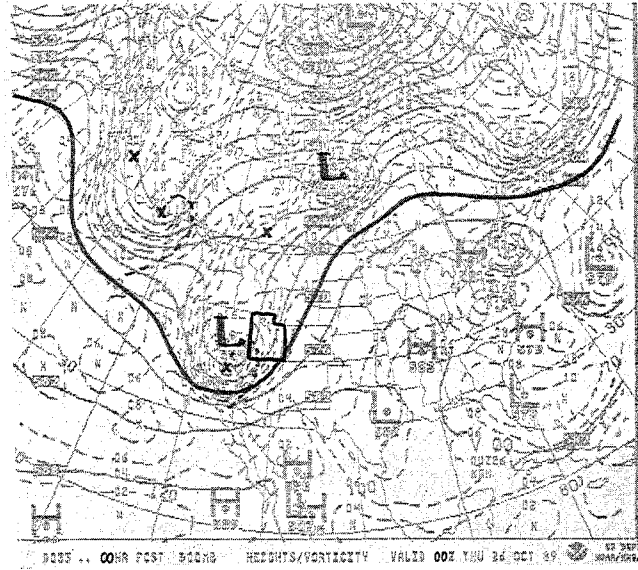


(c) 300 MB ANALYSIS 12Z OCTOBER 26

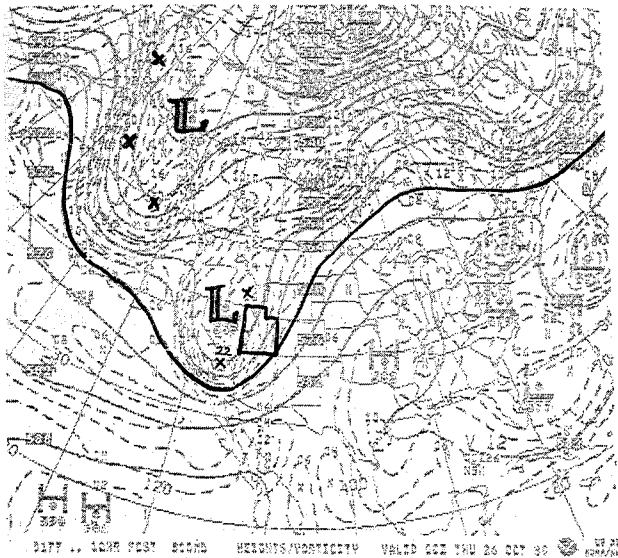
**FIGURE 3**  
 The highlighted vorticity lobe on Figures 3a and 3b  
 is associated with the 300 mb "advection" jet.



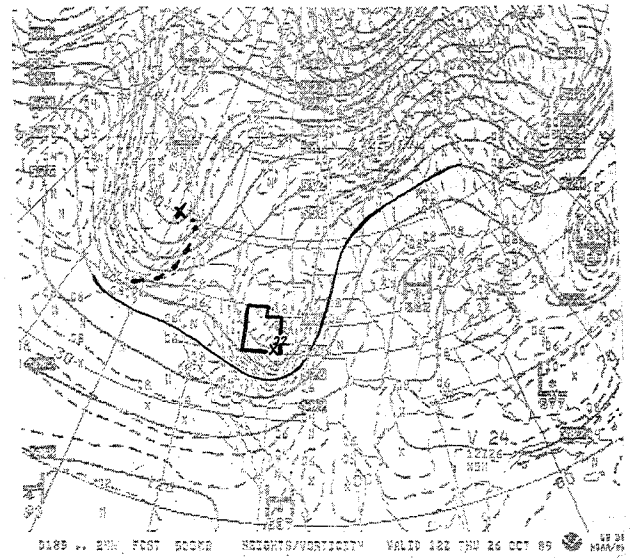
**(a) 500 MB ANALYSIS HEIGHTS/VORTICITY  
 VALID 12z OCTOBER 25**



**(b) 500 MB ANALYSIS HEIGHTS/VORTICITY  
 VALID 00z OCTOBER 26**



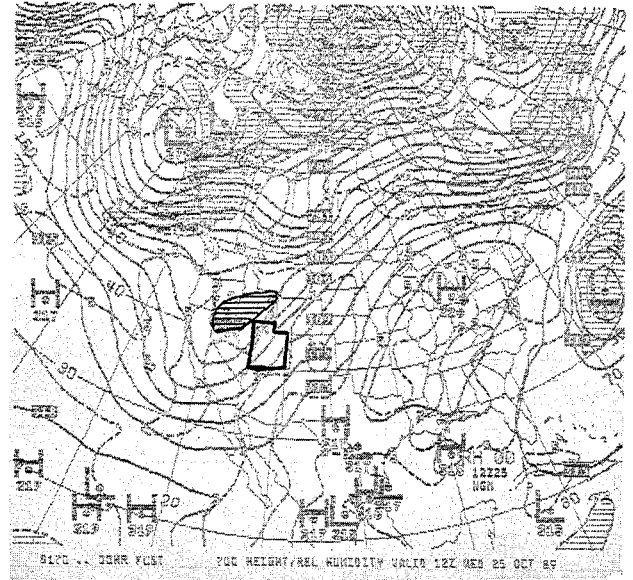
**(c) 500 MB NGM 12-HR FCST HGTS/VORTICITY  
 VALID 00z OCTOBER 26**



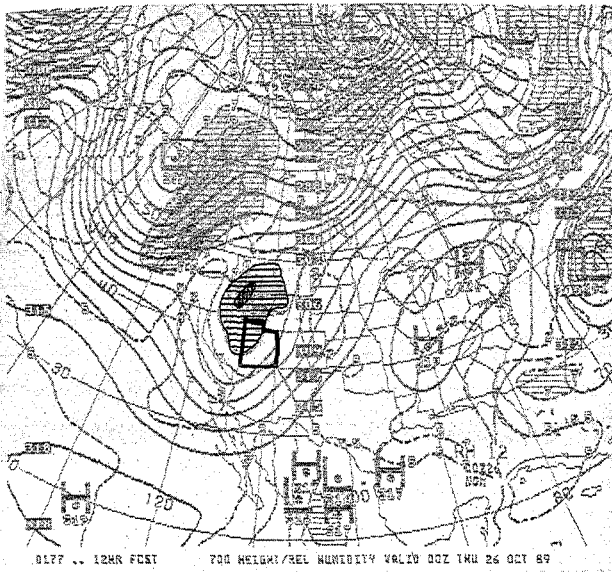
**(d) 500 MB NGM 24-HR FCST HGTS/VORTICITY  
 VALID 12z OCTOBER 26**

**FIGURE 4**

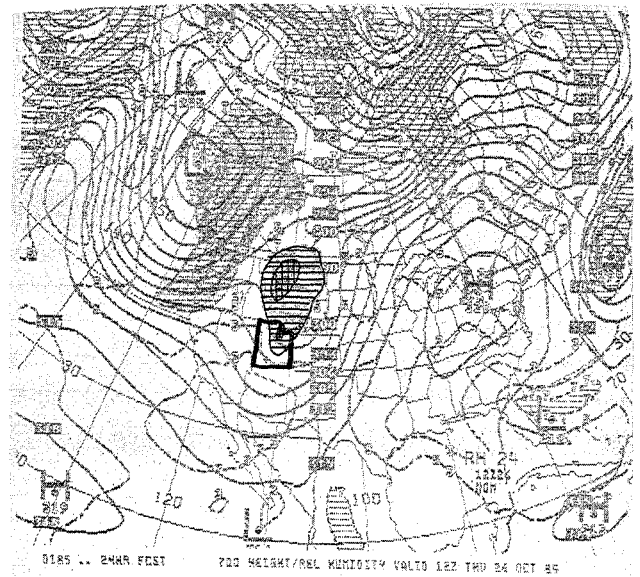
Figures 4a, 4b, and 4c are the NGM's 12Z October 25 analysis, 12-hour forecast, and 24-hour forecast of the 700 mb height and relative humidity fields. The highlighted area with horizontal lines represents  $\geq 70\%$  RH and the cross-hatched area represents  $\geq 90\%$  RH.



**(a) 700 MB ANALYSIS HGTS/RH VALID 12Z OCTOBER 25**



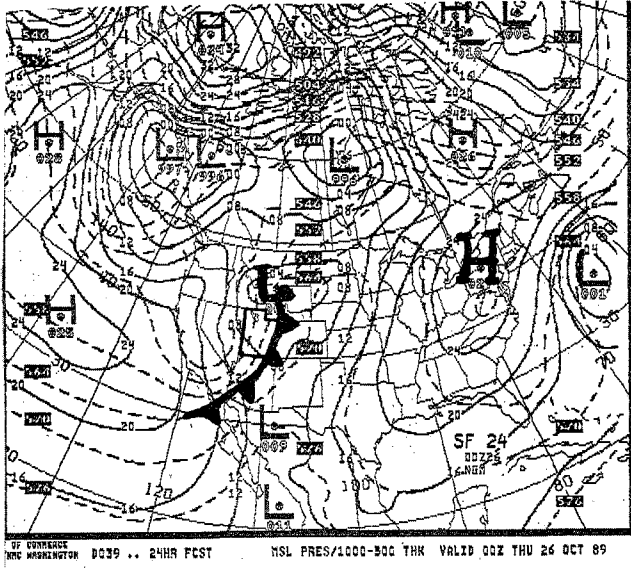
**(b) 700 MB NGM 12-HR FCST HGTS/RH VALID 00Z OCTOBER 26**



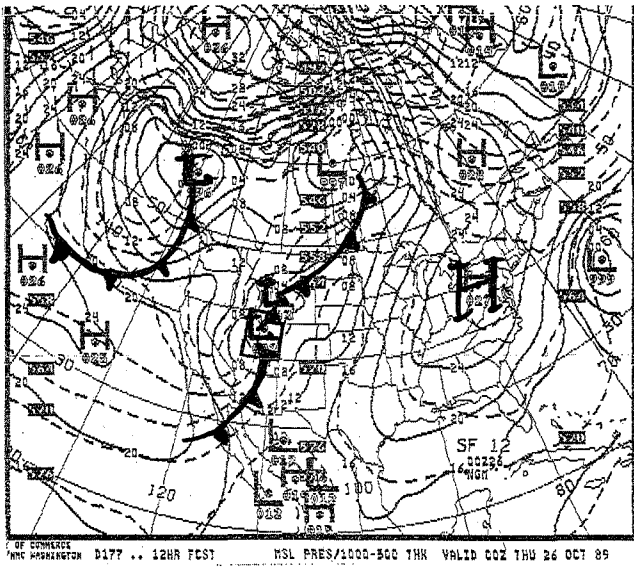
**(c) 700 MB NGM 24-HR FCST HGTS/RH VALID 12Z OCTOBER 26**



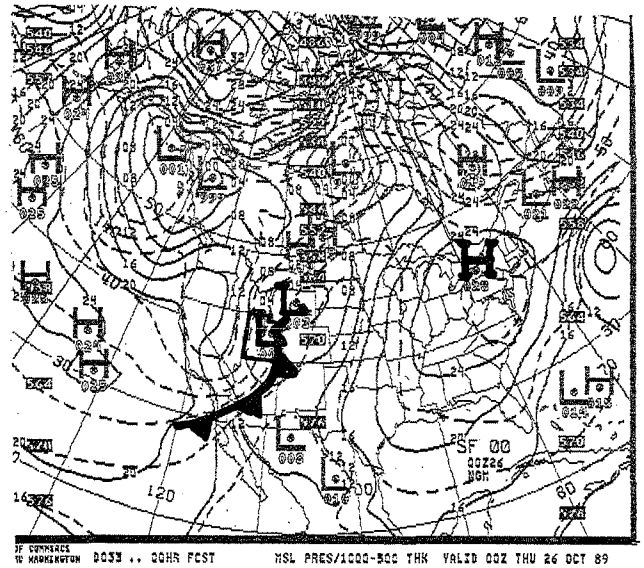
FIGURE 5



(a) NGM 24-HR FCST MSL PRES/THKNS VALID 00Z OCTOBER 26

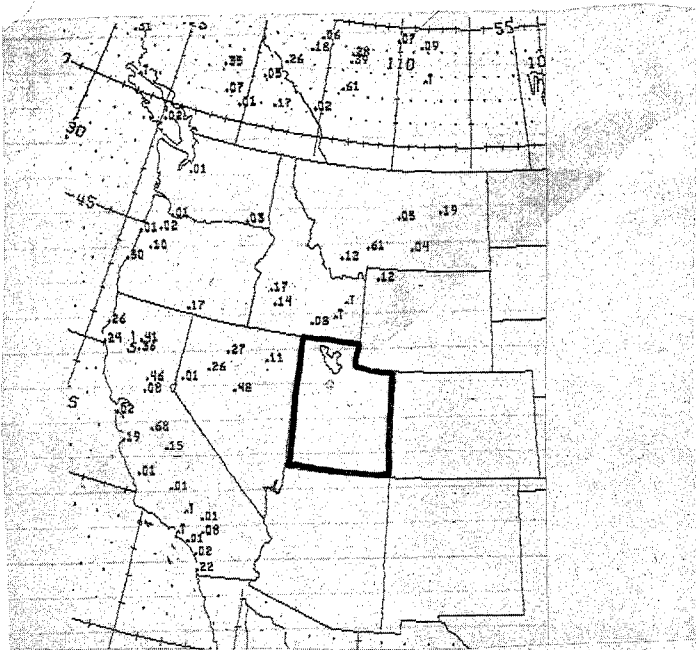


(b) NGM 12-HR FCST MSL PRES/THKNS VALID 00Z OCTOBER 26

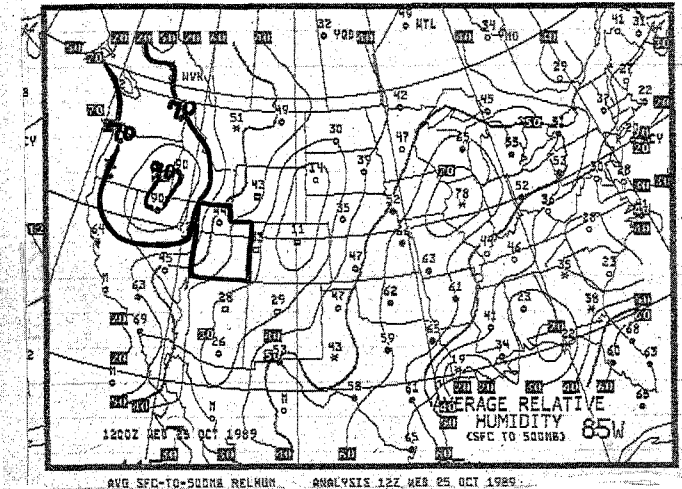


(c) NGM ANALYSIS MSL PRES/THKNS VALID 00Z OCTOBER 26

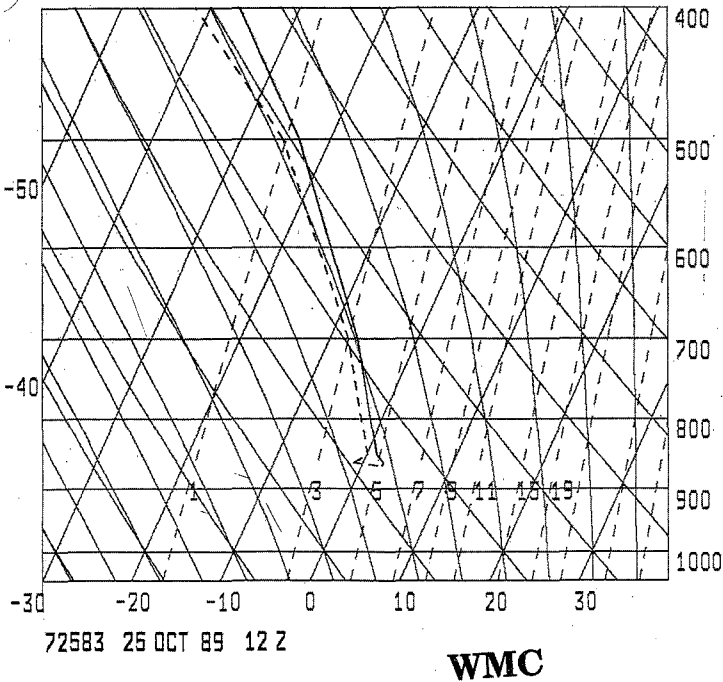
**FIGURE 6**



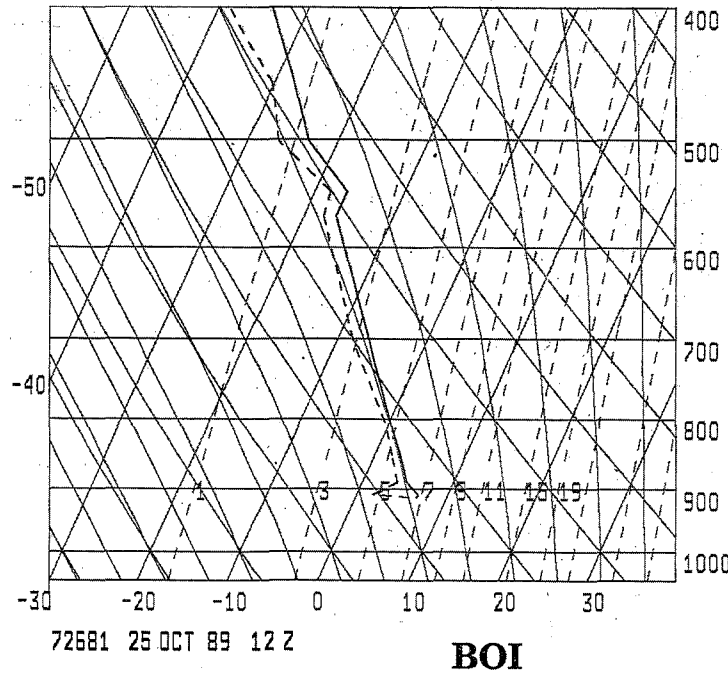
**(a) OBSERVED 24-HR RAINFALL VALID 12Z OCTOBER 25. [NOTE THE TWO IMPRESSIVE RAINFALL REPORTS FROM RED BLUFF AND REDDING, CA.]**



**(b) MEAN RH FROM SFC TO 500 MB VALID 12Z OCTOBER 25.**



**(c) SOUNDING FOR WINNEMUCCA, NV**

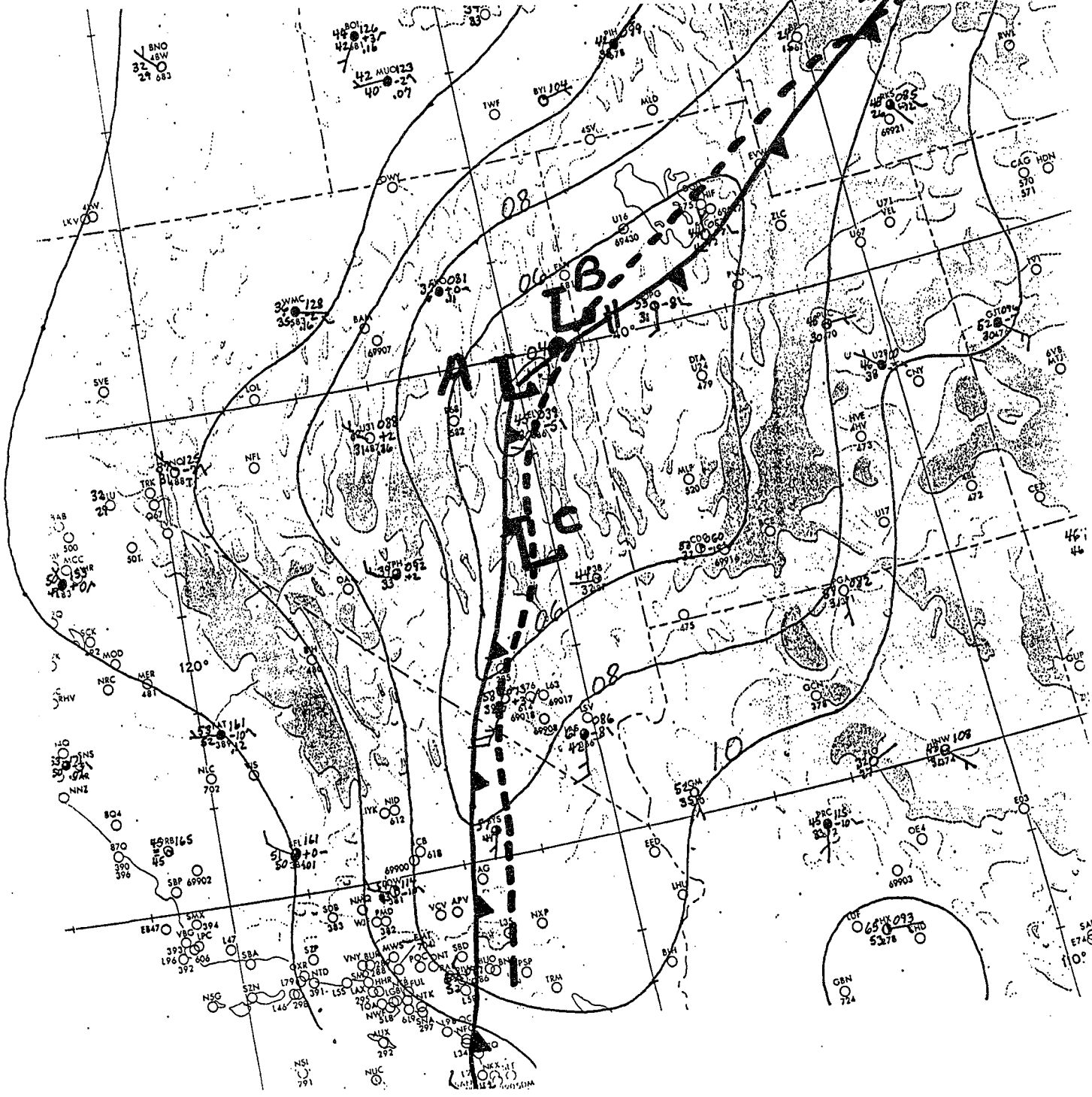


**(d) SOUNDING FOR BOISE, ID**

FIGURE 7.

Combined surface analysis for 12Z and 18Z on October 25 '89.

The conventional cold front symbol attached to the low labeled "A" is the 12Z position. Note the slow movement of the low from "A" position at 12Z to the "B" position at 18Z. The heavy dashed line represents the cold front at 18Z. The low labeled "C" is the approximate position of a secondary wave formation.



**FIGURE 8**

```

FDLW73 KWBC 241200
OUTPUT FROM NGM 12Z OCT 24 89
TTPTR1R2R3 VVLI PSDDFF HHT1T3T5 TTPTR1R2R3 VVLI PSDDFF HHT1T3T5
SLC//7423722 00604 161721 62120797 CDC//532623 02606 171921 65120700
06000463520 02204 152115 61110597 06000382215 00706 172213 64130501
12000283121 01603 112117 63140797 12000262525 01105 132118 66150801
18000333650 02003 122416 61110698 18000413257 00205 142319 64110602
24000465367 02003 112209 58080397 24000654462 02804 122215 61080400
30000556655 00502 091910 58080297 30000675944 02503 102010 58080298
36000457936 00999 052010 57110395 36000616415 03598 062213 55090293
42000778117 00996 073111 53070194 42005965504 01596 102813 48040091
48005917908 01797 093217 50040093 48002944510 -2602 143217 49030091

```

**(a) NGM OUTPUT FOR SALT LAKE CITY FROM THE 12Z OCTOBER 24 RUN. NOTE THAT 0.05 INCHES WAS FORECAST BY THIS PARTICULAR RUN FOR THE LAST 6 HOURS OF THE 48 HOUR FORECAST PERIOD.**

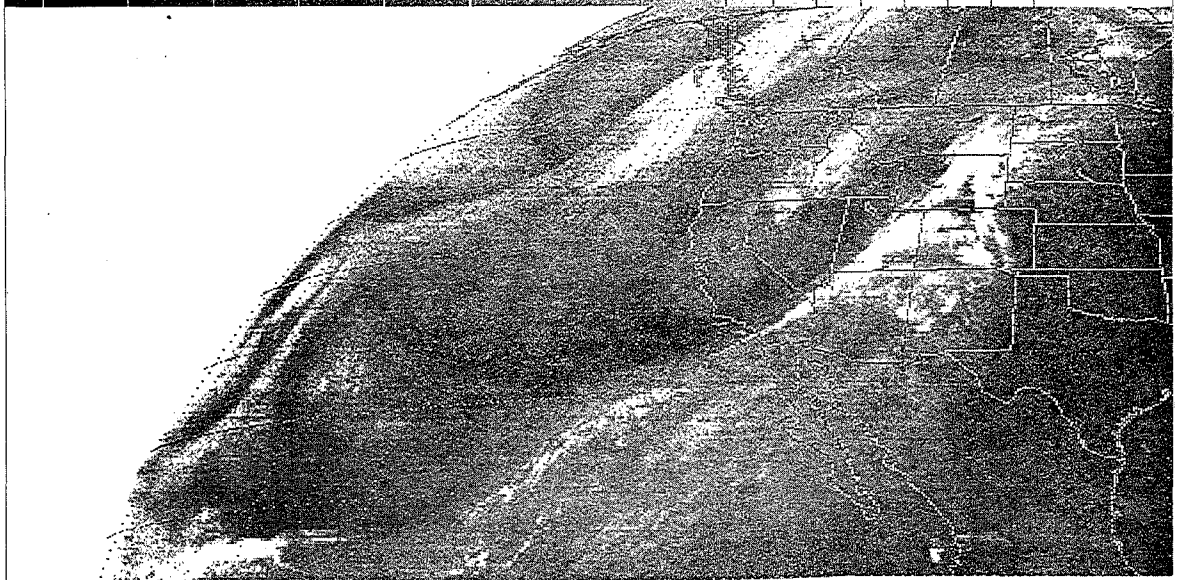
```

FDLW73 KWBC 251200
OUTPUT FROM NGM 12Z OCT 25 89
TTPTR1R2R3 VVLI PSDDFF HHT1T3T5 TTPTR1R2R3 VVLI PSDDFF HHT1T3T5
SLC//334636 00902 071819 61130697 CDC//404454 03203 102124 62110698
06000476467 01602 062212 57080394 06000555142 02001 072213 57100296
12000477623 02298 032207 56100394 12007546609 03797 042217 55100294
18009989724 02197 073218 50040093 18002858803 00996 102515 47040092
24009967810 00600 133020 45009891 24000804213 -2308 163217 47029891
30000764316 -1106 202312 45009891 30000522905 -1611 203508 52049954
36000405221 -1307 182809 51059994 36000233317 00208 172703 57100296
42000345010 -0106 192306 52060094 42000213214 00108 192304 57100397
48000274508 01305 182215 52060094 48000223216 00507 182108 57090398

```

**(b) NGM OUTPUT FOR SALT LAKE CITY FROM THE 12Z OCTOBER 25 RUN. THIS RUN OF THE NGM FORECAST 0.18 INCHES FOR A 12 HOUR PERIOD, WHICH WAS STILL MUCH TOO LOW. NOTE ALSO THE HIGHER RELATIVE HUMIDITIES FORECAST BY THIS RUN FOR THE LOWEST 2 LAYERS.**

1301 250C89 293-4ZA 01111 10671 CC4



**FIGURE 9** Note the dark area from southern Calif. to 130°W.

1601 250C89 193-4ZA 01102 10681 CC4



**FIGURE 10** Note that the dark area enlarged and moved across southern Calif.

1901 250C89 193-4ZA 01112 10681 CC4

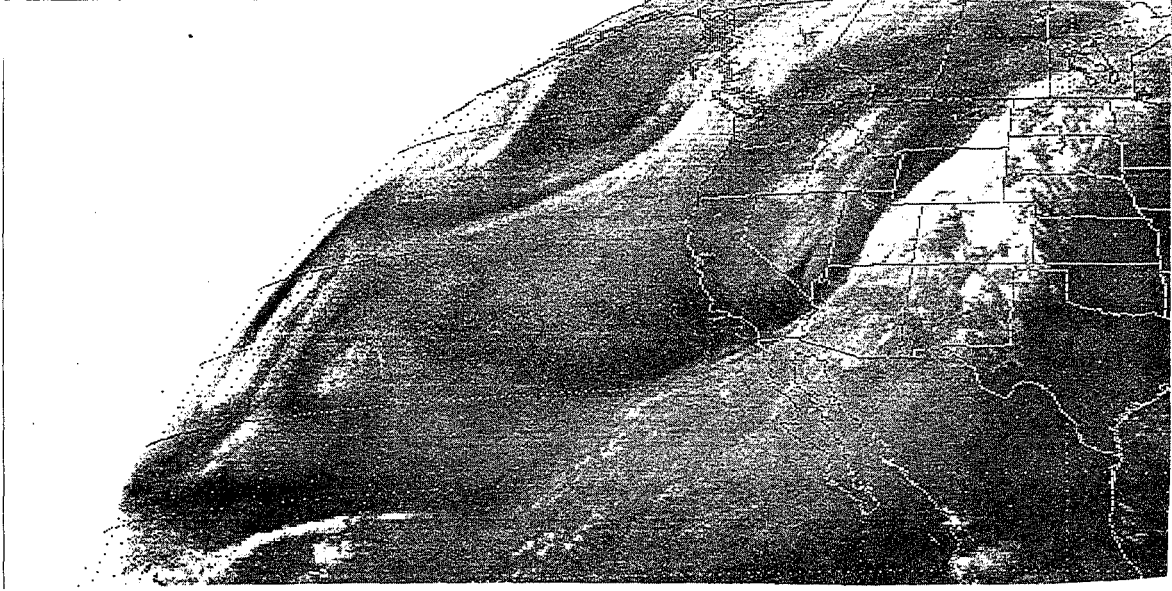


FIGURE 11

0101 260C89 193-4ZA 01121 10691 CC4

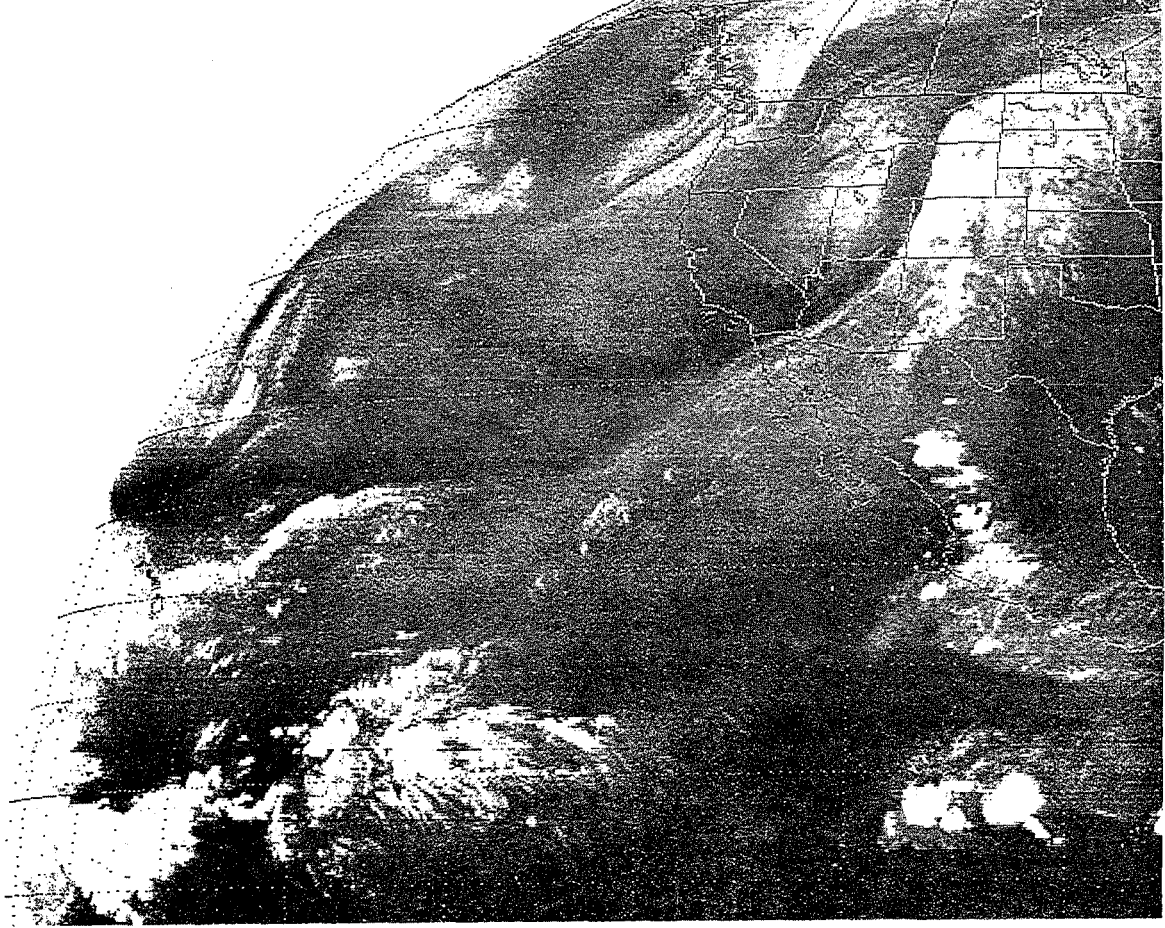


FIGURE 12

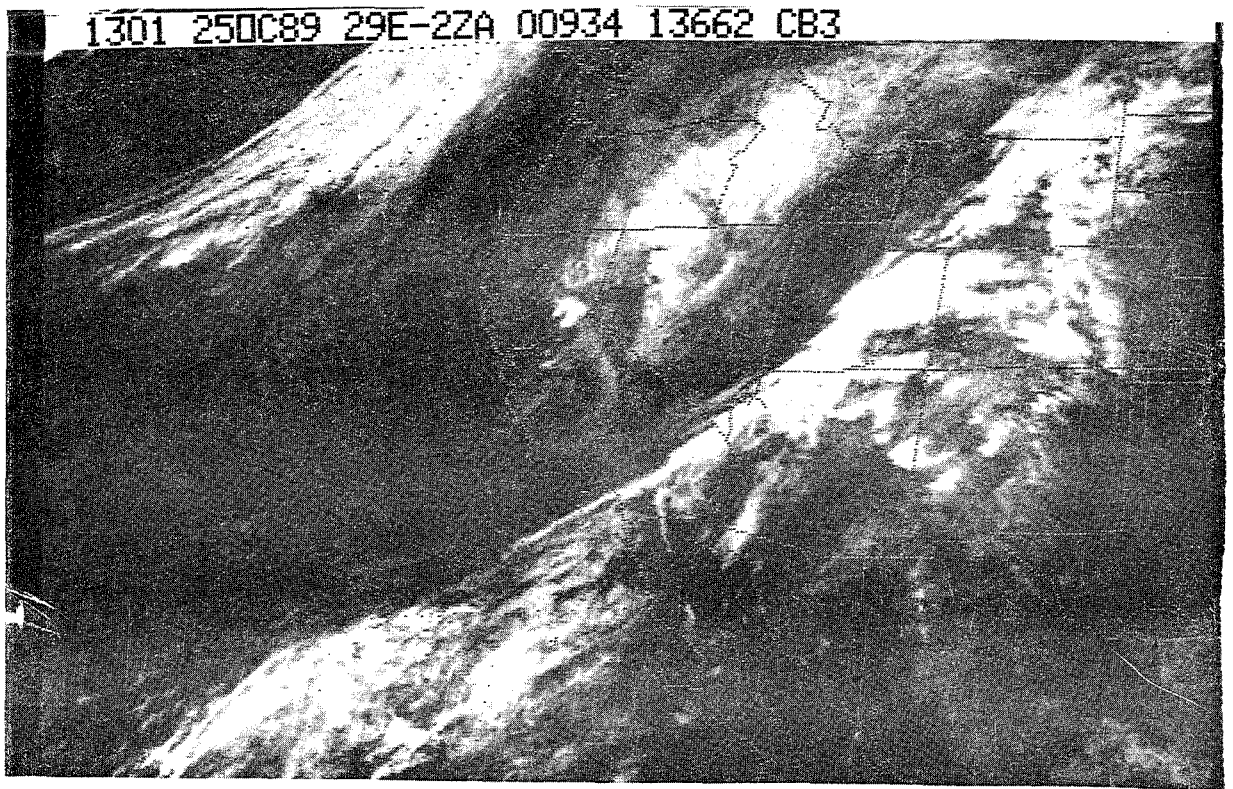


FIGURE 13

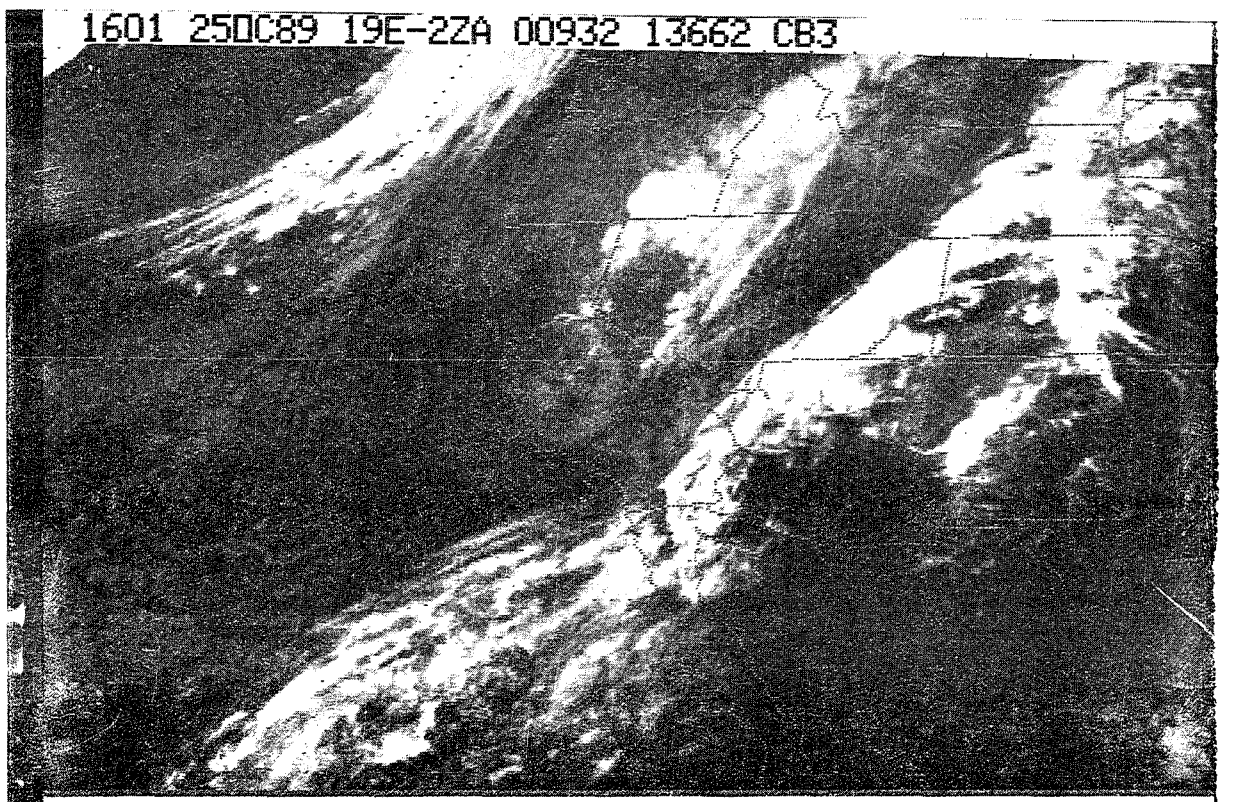


FIGURE 14

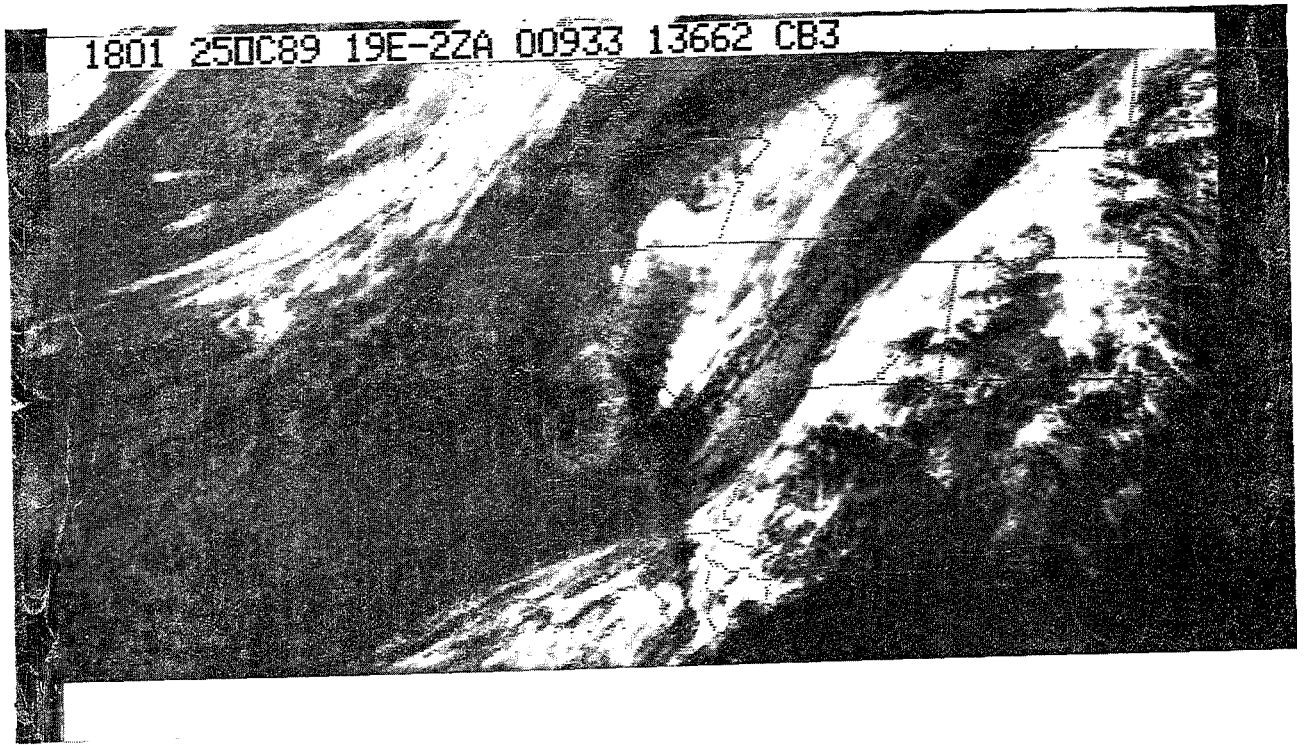


FIGURE 15

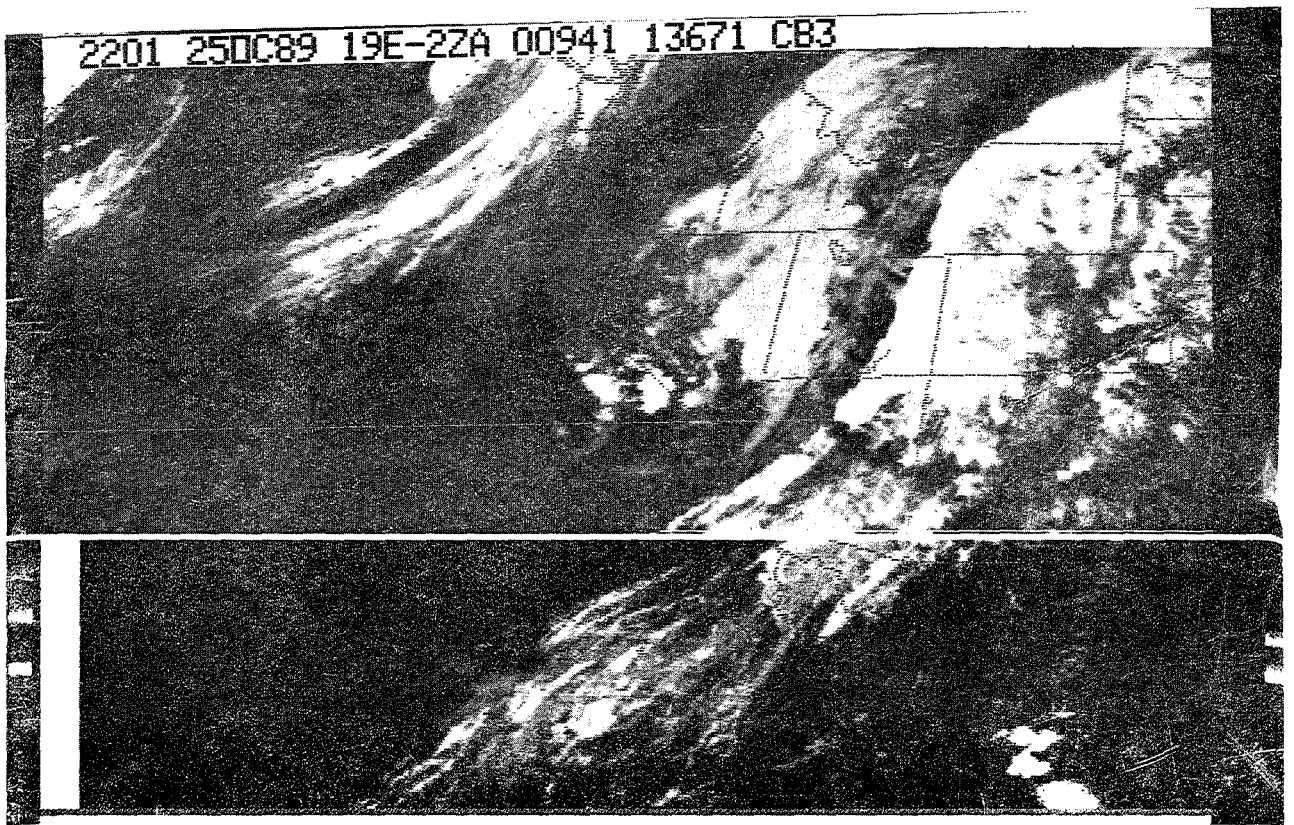


FIGURE 16



- 142 The Usefulness of Data from Mountaintop Fire Lookout Stations in Determining Atmospheric Stability. Jonathan W. Corey, April 1979. (PB298899/AS)
- 143 The Depth of the Marine Layer at San Diego as Related to Subsequent Cool Season Precipitation Episodes in Arizona. Ira S. Brenner, May 1979. (PB298817/AS)
- 144 Arizona Cool Season Climatological Surface Wind and Pressure Gradient Study. Ira S. Brenner, May 1979. (PB298900/AS)
- 146 The BART Experiment. Morris S. Webb, October 1979. (PB80 155112)
- 147 Occurrence and Distribution of Flash Floods in the Western Region. Thomas L. Dietrich, December 1979. (PB80 160344)
- 149 Misinterpretations of Precipitation Probability Forecasts. Allan H. Murphy, Sarah Lichtenstein, Baruch Fischhoff, and Robert L. Winkler, February 1980. (PB80 174576)
- 150 Annual Data and Verification Tabulation - Eastern and Central North Pacific Tropical Storms and Hurricanes 1979. Emil B. Gunther and Staff, EPHC, April 1980. (PB80 220486)
- 151 NMC Model Performance in the Northeast Pacific. James E. Overland, PMEL-ERL, April 1980. (PB80 196033)
- 152 Climate of Salt Lake City, Utah. Wilbur E. Figgins (Retired) and Alexander R. Smith. Fourth Revision, March 1989. (PB89 180624/AS)
- 153 An Automatic Lightning Detection System in Northern California. James E. Rea and Chris E. Fontana, June 1980. (PB80 225592)
- 154 Regression Equation for the Peak Wind Gust 6 to 12 Hours in Advance at Great Falls During Strong Downslope Wind Storms. Michael J. Oard, July 1980. (PB91 108387)
- 155 A Raininess Index for the Arizona Monsoon. John H. Ten Harkel, July 1980. (PB81 106494)
- 156 The Effects of Terrain Distribution on Summer Thunderstorm Activity at Reno, Nevada. Christopher Dean Hill, July 1980. (PB81 102501)
- 157 An Operational Evaluation of the Scofield/Oliver Technique for Estimating Precipitation Rates from Satellite Imagery. Richard Ochoa, August 1980. (PB81 108227)
- 158 Hydrology Practicum. Thomas Dietrich, September 1980. (PB81 134033)
- 159 Tropical Cyclone Effects on California. Arnold Court, October 1980. (PB81 133779)
- 160 Eastern North Pacific Tropical Cyclone Occurrences During Intraseasonal Periods. Preston W. Leftwich and Gail M. Brown, February 1981. (PB81 205494)
- 161 Solar Radiation as a Sole Source of Energy for Photovoltaics in Las Vegas, Nevada, for July and December. Darryl Randerson, April 1981. (PB81 224503)
- 162 A Systems Approach to Real-Time Runoff Analysis with a Deterministic Rainfall-Runoff Model. Robert J.C. Burnash and R. Larry Ferral, April 1981. (PB81 224495)
- 163 A Comparison of Two Methods for Forecasting Thunderstorms at Luke Air Force Base, Arizona. LTC Keith R. Cooley, April 1981. (PB81 225393)
- 164 An Objective Aid for Forecasting Afternoon Relative Humidity Along the Washington Cascade East Slopes. Robert S. Robinson, April 1981. (PB81 23078)
- 165 Annual Data and Verification Tabulation, Eastern North Pacific Tropical Storms and Hurricanes 1980. Emil B. Gunther and Staff, May 1981. (PB82 230336)
- 166 Preliminary Estimates of Wind Power Potential at the Nevada Test Site. Howard G. Booth, June 1981. (PB82 127036)
- 167 ARAP User's Guide. Mark Mathewson, July 1981, Revised September 1981. (PB82 196783)
- 168 Forecasting the Onset of Coastal Gales Off Washington-Oregon. John R. Zimmerman and William D. Burton, August 1981. (PB82 127051)
- 169 A Statistical-Dynamical Model for Prediction of Tropical Cyclone Motion in the Eastern North Pacific Ocean. Preston W. Leftwich, Jr., October 1981. (PB82 195298)
- 170 An Enhanced Plotter for Surface Airways Observations. Andrew J. Spry and Jeffrey L. Anderson, October 1981. (PB82 153883)
- 171 Verification of 72-Hour 500-MB Map-Type Predictions. R.F. Quiring, November 1981. (PB82 158098)
- 172 Forecasting Heavy Snow at Wenatchee, Washington. James W. Holcomb, December 1981. (PB82 177783)
- 173 Central San Joaquin Valley Type Maps. Thomas R. Crossan, December 1981. (PB82 196064)
- 174 ARAP Test Results. Mark A. Mathewson, December 1981. (PB82 196103)
- 176 Approximations to the Peak Surface Wind Gusts from Desert Thunderstorms. Darryl Randerson, June 1982. (PB82 253089)
- 177 Climate of Phoenix, Arizona. Robert J. Schmidli, April 1969 (Revised December 1986). (PB87 142063/AS)
- 178 Annual Data and Verification Tabulation, Eastern North Pacific Tropical Storms and Hurricanes 1982. E.B. Gunther, June 1983. (PB85 106078)
- 179 Stratified Maximum Temperature Relationships Between Sixteen Zone Stations in Arizona and Respective Key Stations. Ira S. Brenner, June 1983. (PB83 249904)
- 180 Standard Hydrologic Exchange Format (SHEF) Version I. Phillip A. Pasteries, Vernon C. Bissel, David G. Bennett, August 1983. (PB85 106052)
- 181 Quantitative and Spacial Distribution of Winter Precipitation along Utah's Wasatch Front. Lawrence B. Dunn, August 1983. (PB85 106912)
- 182 500 Millibar Sign Frequency Teleconnection Charts - Winter. Lawrence B. Dunn, December 1983. (PB85 106276)
- 183 500 Millibar Sign Frequency Teleconnection Charts - Spring. Lawrence B. Dunn, January 1984. (PB85 111367)
- 184 Collection and Use of Lightning Strike Data in the Western U.S. During Summer 1983. Glenn Rasch and Mark Mathewson, February 1984. (PB85 110534)
- 185 500 Millibar Sign Frequency Teleconnection Charts - Summer. Lawrence B. Dunn, March 1984. (PB85 111359)
- 186 Annual Data and Verification Tabulation eastern North Pacific Tropical Storms and Hurricanes 1983. E.B. Gunther, March 1984. (PB85 109635)
- 187 500 Millibar Sign Frequency Teleconnection Charts - Fall. Lawrence B. Dunn, May 1984. (PB85 110930)
- 188 The Use and Interpretation of Isentropic Analyses. Jeffrey L. Anderson, October 1984. (PB85 132694)
- 189 Annual Data & Verification Tabulation Eastern North Pacific Tropical Storms and Hurricanes 1984. E.B. Gunther and R.L. Cross, April 1985. (PB85 137887AS)
- 190 Great Salt Lake Effect Snowfall: Some Notes and An Example. David M. Carpenter, October 1985. (PB86 119153/AS)
- 191 Large Scale Patterns Associated with Major Freeze Episodes in the Agricultural Southwest. Ronald S. Hamilton and Glenn R. Lussky, December 1985. (PB86 144474AS)
- 192 NWR Voice Synthesis Project: Phase I. Glen W. Sampson, January 1986. (PB86 145604/AS)
- 193 The MCC - An Overview and Case Study on Its Impact in the Western United States. Glenn R. Lussky, March 1986. (PB86 170651/AS)
- 194 Annual Data and Verification Tabulation Eastern North Pacific Tropical Storms and Hurricanes 1985. E.B. Gunther and R.L. Cross, March 1986. (PB86 170941/AS)
- 195 Radii Interpretation Guidelines. Roger G. Pappas, March 1986. (PB86 177680/AS)
- 196 A Mesoscale Convective Complex Type Storm over the Desert Southwest. Darryl Randerson, April 1985. (PB86 190998/AS)
- 197 The Effects of Eastern North Pacific Tropical Cyclones on the Southwestern United States. Walter Smith, August 1986. (PB87 106258AS)
- 198 Preliminary Lightning Climatology Studies for Idaho. Christopher D. Hill, Carl J. Gorski, and Michael C. Conger, April 1987. (PB87 180196/AS)
- 199 Heavy Rains and Flooding in Montana: A Case for Slantwise Convection. Glenn R. Lussky, April 1987. (PB87 185229/AS)
- 200 Annual Data and Verification Tabulation Eastern North Pacific Tropical Storms and Hurricanes 1986. Roger L. Cross and Kenneth B. Mielke, September 1987. (PB88 110895/AS)
- 201 An Inexpensive Solution for the Mass Distribution of Satellite Images. Glen W. Sampson and George Clark, September 1987. (PB88 114038/AS)
- 202 Annual Data and Verification Tabulation Eastern North Pacific Tropical Storms and Hurricanes 1987. Roger L. Cross and Kenneth B. Mielke, September 1988. (PB88 101935/AS)
- 203 An Investigation of the 24 September 1986 "Cold Sector" Tornado Outbreak in Northern California. John P. Monteverdi and Scott A. Braun, October 1988. (PB89 121287/AS)
- 204 Preliminary Analysis of Cloud-To-Ground Lightning in the Vicinity of the Nevada Test Site. Carven Scott, November 1988. (PB89 128649/AS)
- 205 Forecast Guidelines For Fire Weather and Forecasters -- How Nighttime Humidity Affects Wildland Fuels. David W. Goens, February 1989. (PB89 162549/AS)
- 206 A Collection of Papers Related to Heavy Precipitation Forecasting. Western Region Headquarters, Scientific Services Division, August 1989. (PB89 230833/AS)
- 207 The Las Vegas McCarran International Airport Microburst of August 8, 1989. Carven A. Scott, June 1990. (PB90-240268)
- 208 Meteorological Factors Contributing to the Canyon Creek Fire Blowup, September 6 and 7, 1988. David W. Goens, June 1990. (PB90-245085)
- 209 Stratus Surge Prediction Along the Central California Coast. Peter Felsch and Woodrow Whitlatch, December 1990. (PB91-129239)
- 210 Hydrotools. Tom Egger, January 1991.

## NOAA SCIENTIFIC AND TECHNICAL PUBLICATIONS

*The National Oceanic and Atmospheric Administration* was established as part of the Department of Commerce on October 3, 1970. The mission responsibilities of NOAA are to assess the socioeconomic impact of natural and technological changes in the environment and to monitor and predict the state of the solid Earth, the oceans and their living resources, the atmosphere, and the space environment of the Earth.

The major components of NOAA regularly produce various types of scientific and technical information in the following kinds of publications.

**PROFESSIONAL PAPERS**--Important definitive research results, major techniques, and special investigations.

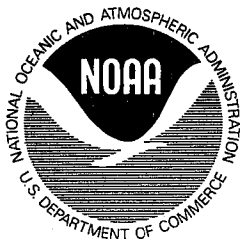
**CONTRACT AND GRANT REPORTS**--Reports prepared by contractors or grantees under NOAA sponsorship.

**ATLAS**--Presentation of analyzed data generally in the form of maps showing distribution of rainfall, chemical and physical conditions of oceans and atmosphere, distribution of fishes and marine mammals, ionospheric conditions, etc.

**TECHNICAL SERVICE PUBLICATIONS**--Reports containing data, observations, instructions, etc. A partial listing includes data serials; prediction and outlook periodicals; technical manuals, training papers, planning reports, and information serials; and miscellaneous technical publications.

**TECHNICAL REPORTS**--Journal quality with extensive details, mathematical developments, or data listings.

**TECHNICAL MEMORANDUMS**--Reports of preliminary, partial, or negative research or technology results, interim instructions, and the like.



Information on availability of NOAA publications can be obtained from:

NATIONAL TECHNICAL INFORMATION SERVICE

U. S. DEPARTMENT OF COMMERCE

5285 PORT ROYAL ROAD

SPRINGFIELD, VA 22161