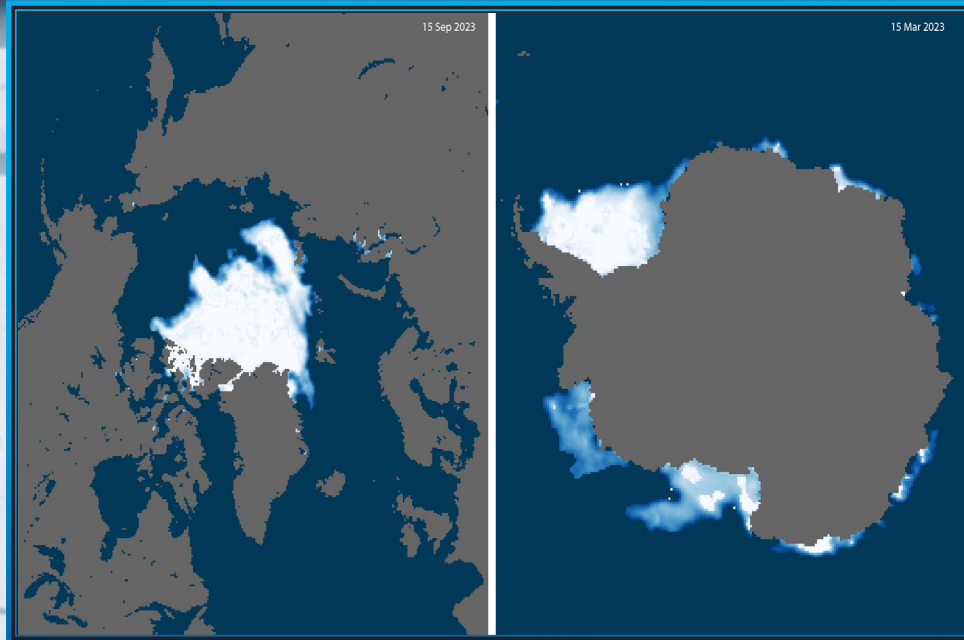




# Sea Ice Concentration



## CLIMATE DATA RECORD SPECIFICATIONS

- Polar coverage (above 31°N and below 39°S)
- 25km x 25km grid
- Daily and monthly products
- 1978–present
- Preliminary data updated daily
- Final data updated quarterly

## VARIABLES TO THIS

### CLIMATE DATA RECORD

- Sea ice concentration
- Snow melt onset

## SOME USES OF THIS

### CLIMATE DATA RECORD

- Studying, modeling, and monitoring climate variability
- Providing guidance for national defense, shipping industry, and policy makers
- Reporting effects on fisheries, natural resources, and native communities
- Studying impacts to cryosphere, ocean, and atmosphere
- Informing educators, students, media, and the general public

### SEA ICE CONCENTRATION

<https://www.ncei.noaa.gov/products/climate-data-records/sea-ice-concentration>

### CLIMATE DATA RECORD INFORMATION:

<https://www.ncei.noaa.gov/products/climate-data-records>

# NOAA's Climate Data Record (CDR)